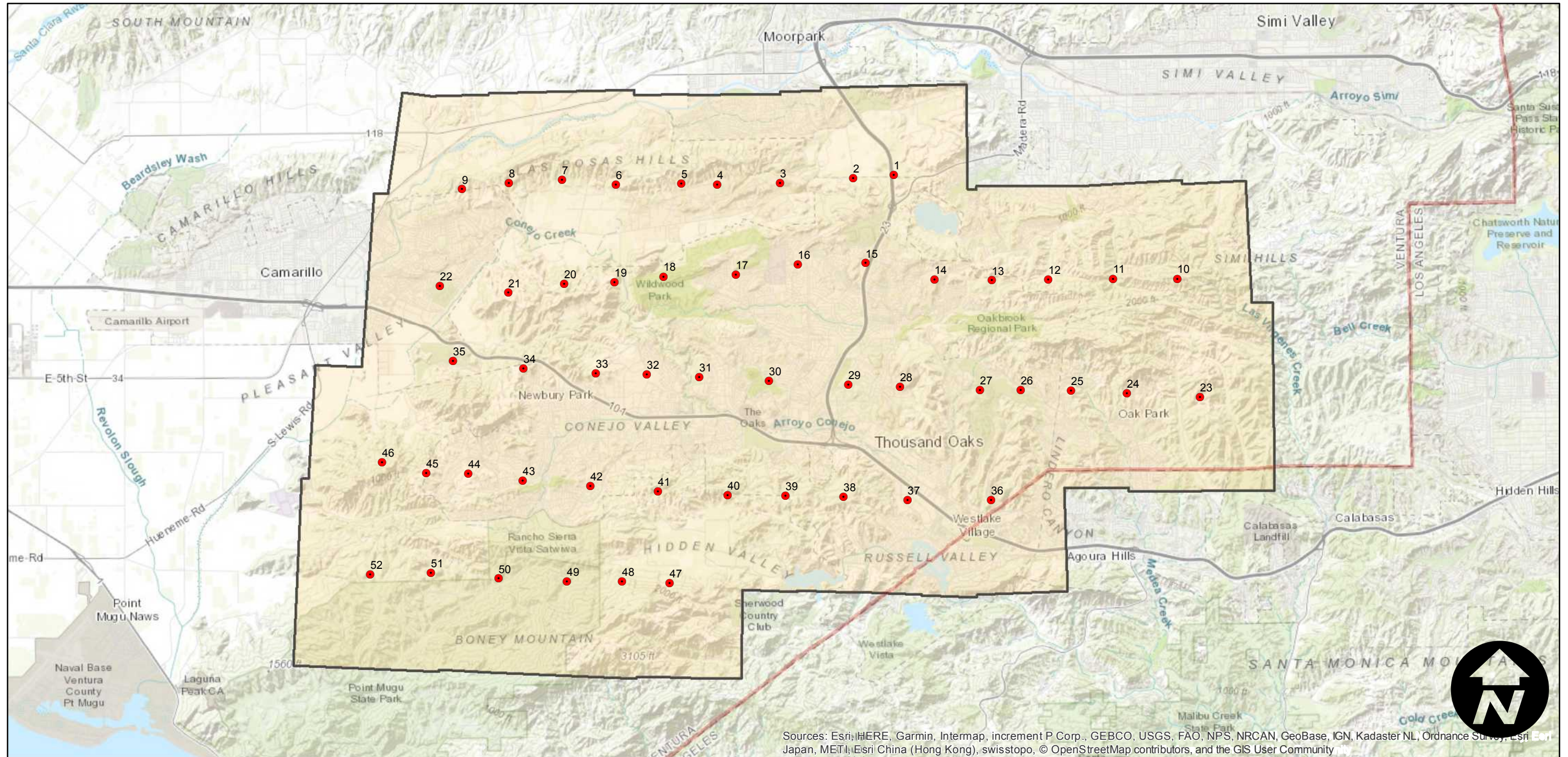
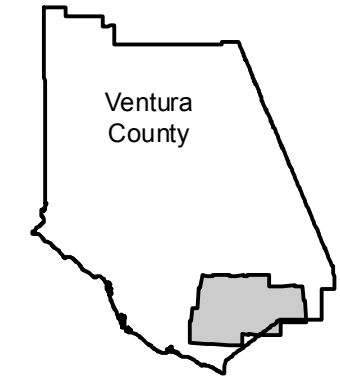


C-3981

Counties: Ventura
Flight date(s): 05-10-1936 to 05-21-1936
Scale: 1:24,000
Overlap: 60%

Note: "El Conejo Ranch", area 10 miles inland from Dume Point [present-day area of Westlake Village and Thousand Oaks]. Imagery acquired, January 2013. Nitrate negatives scanned, May 2015.

FLIGHT LOCATION



Sources: Esri, HERE, Garmin, Intermap, increment P Corp., GEBCO, USGS, FAO, NPS, NRCAN, GeoBase, IGN, Kadaster NL, Ordnance Survey, Esri, Japan, METI, Esri China (Hong Kong), swisstopo, © OpenStreetMap contributors, and the GIS User Community

