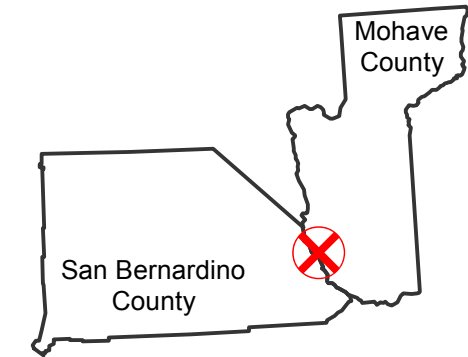


# C-3821C

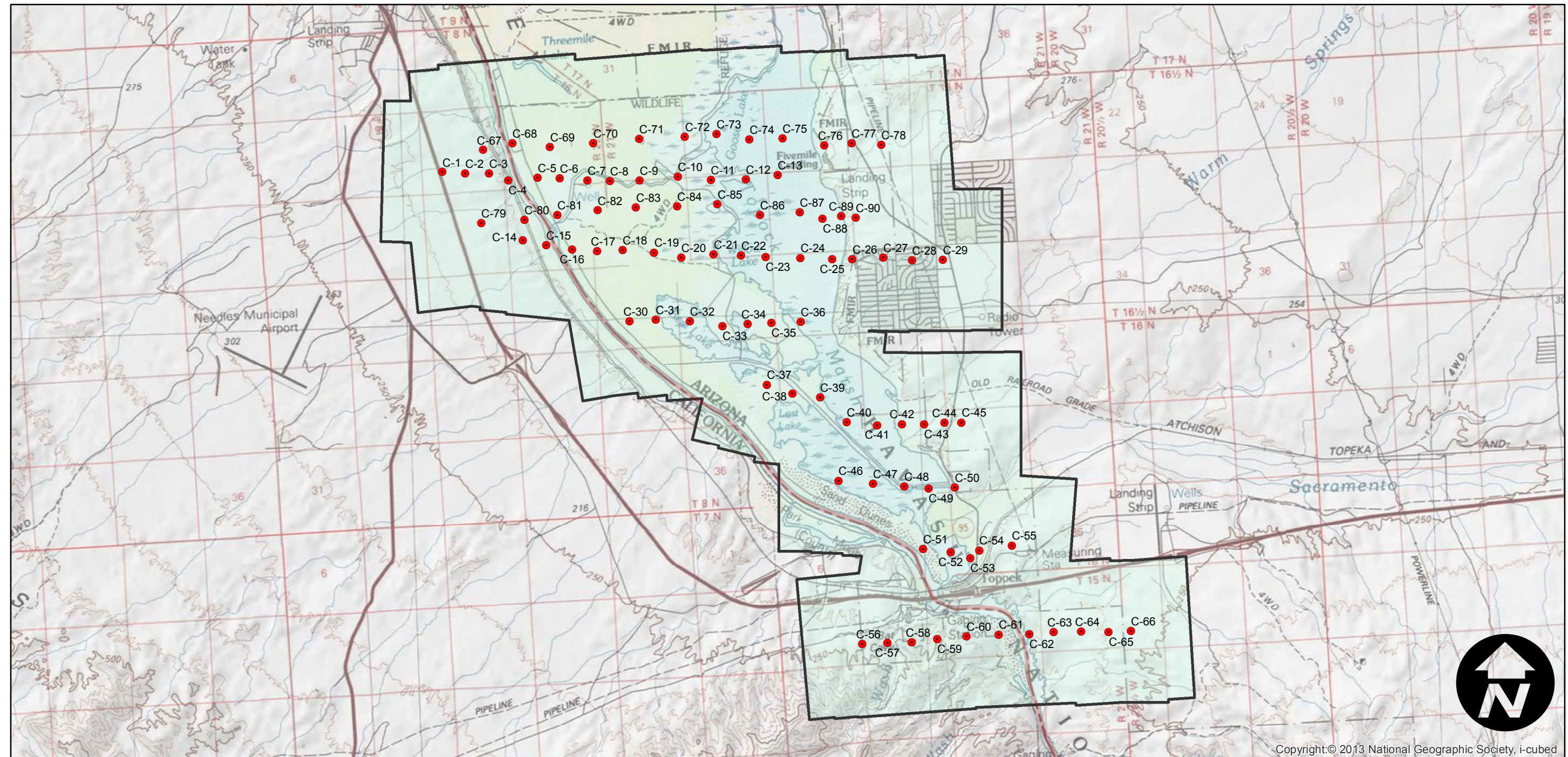
Counties: San Bernardino (California), Mohave (Arizona)  
Flight date(s): 01-15-1936  
Scale: 1:12,000  
Overlap: 60%

Note: Upper Colorado River Valley, vicinity of Topock.  
Imagery acquired from Teledyne, Inc., 1986 and Whittier College, January 2013.

## FLIGHT LOCATION



Complete Metadata:  
<http://www.library.ucsb.edu/mil/aerial-photography-tools>



0 1 2 4 Miles

Index to Aerial Photography  
Page 1 of 1

Scale of this index: 1:80,000

Copyright: © 2013 National Geographic Society, i-cubed