

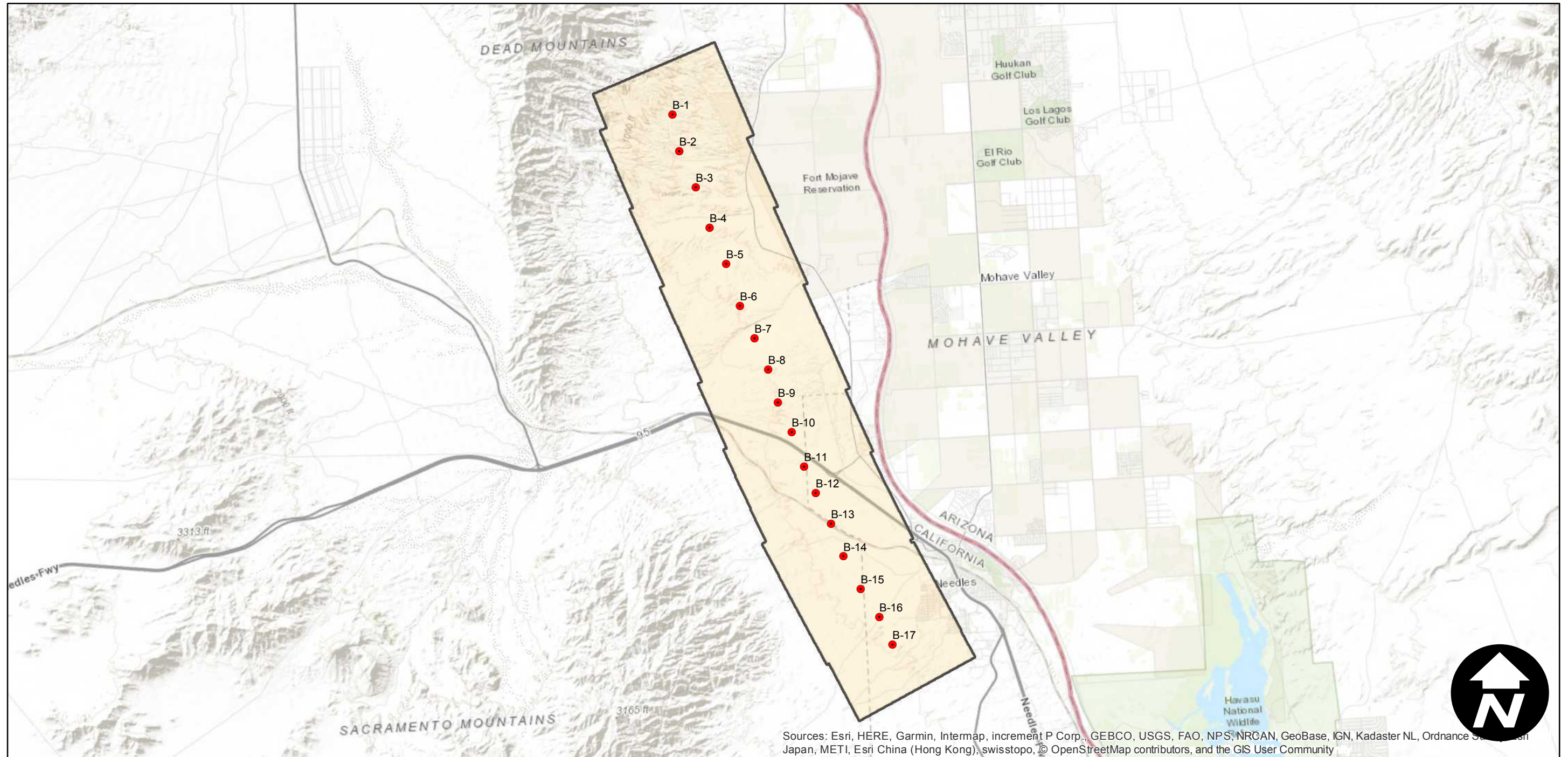
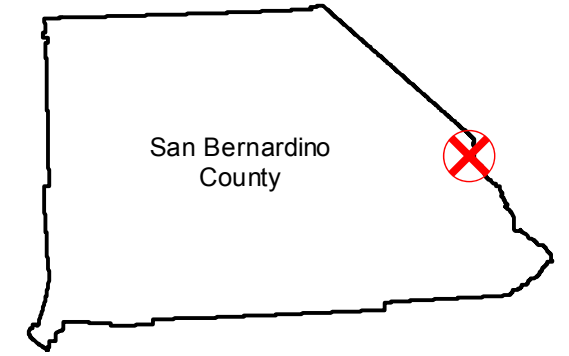
# C-3821B

Counties: San Bernardino  
Flight date(s): 01-12-1936  
Scale: 1:14,400  
Overlap: 60%

Complete Metadata:  
<https://www.library.ucsb.edu/src/airphotos/aerial-photography-information>

Note: Colorado River Valley, vicinity of Needles. Imagery acquired from Whittier College, January 2013. Nitrate negatives, scanned May 2015.

## FLIGHT LOCATION



Sources: Esri, HERE, Garmin, Intermap, increment P Corp., GEBCO, USGS, FAO, NPS, NRCAN, GeoBase, IGN, Kadaster NL, Ordnance Survey, Esri Japan, METI, Esri China (Hong Kong), swisstopo, © OpenStreetMap contributors, and the GIS User Community

0 2 4 8 Miles

Index to Aerial Photography  
Page 1 of 1

Scale of this index: 1:130,000