

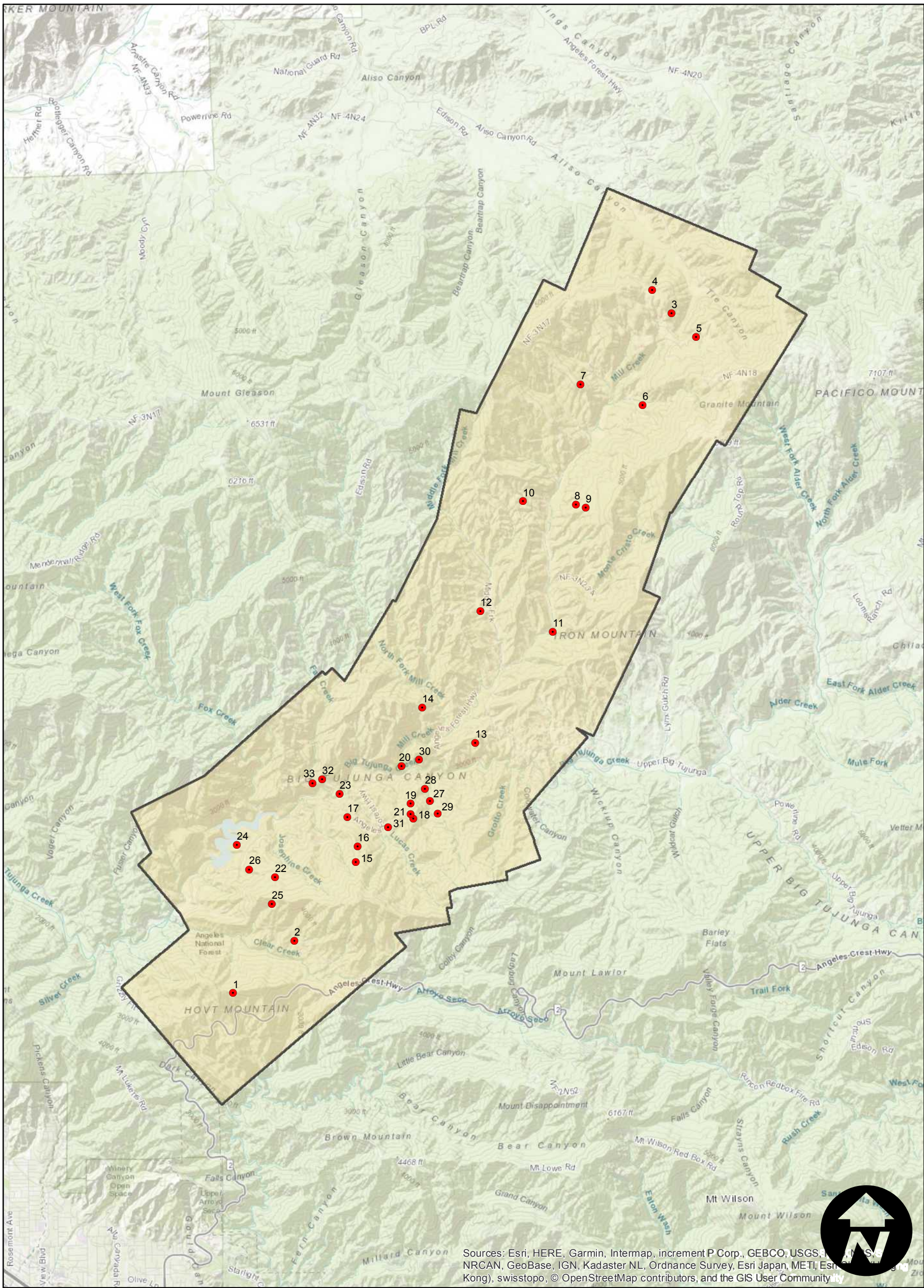
C-3780

Counties: Los Angeles
Flight date(s): 11-19-1935
Scale: 1:14,400
Overlap: 60-90%

Complete Metadata:
<https://www.library.ucsb.edu/src/airphotos/aerial-photography-information>

Note: Angeles Forest Highway (Angeles Crest Highway), Mill Creek area. Copy negatives acquired from Teledyne, Inc., 1986; Prints acquired from Whittier College, January 2013.

FLIGHT LOCATION



Sources: Esri, HERE, Garmin, Intermap, increment P Corp., GEBCO, USGS, NRCAN, GeoBase, IGN, Kadaster NL, Ordnance Survey, Esri Japan, METI, Esri (Kong), swisstopo, © OpenStreetMap contributors, and the GIS User Community