

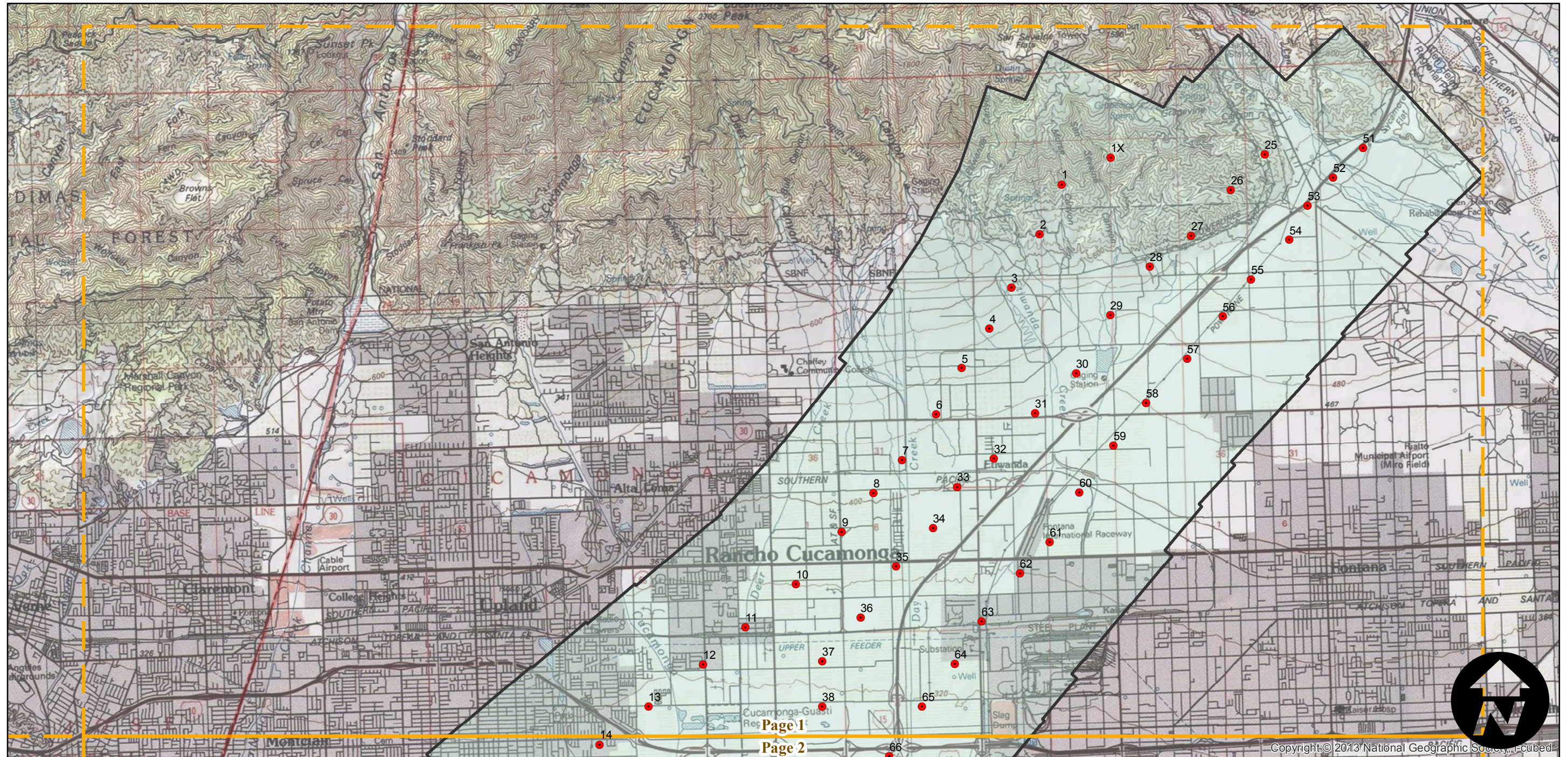
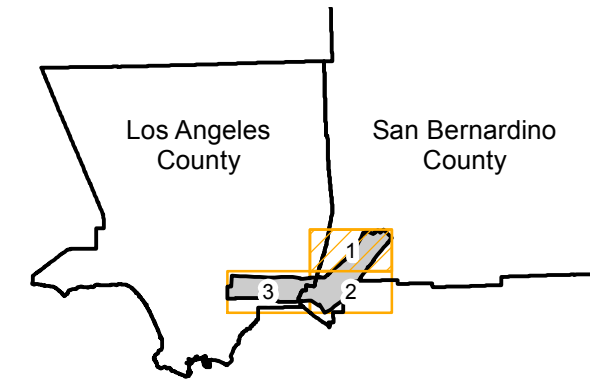
# C-3668

Counties: Los Angeles, San Bernardino  
Flight date(s): 09-06-1935 to 09-08-1935  
Scale: 1:21,000  
Overlap: 60%

Note: Rancho Cucamonga to Whittier Narrows. Some imagery acquired from Teledyne, Inc., 1986; nitrate film and prints acquired from Whittier College, January 2013.

Complete Metadata:  
<http://www.library.ucsb.edu/mil/aerial-photography-tools>

## FLIGHT LOCATION



0 1.5 3 6 Miles

Index to Aerial Photography  
Page 1 of 3

Scale of this index: 1:95,000

Copyright © 2013 National Geographic Society, Inc.

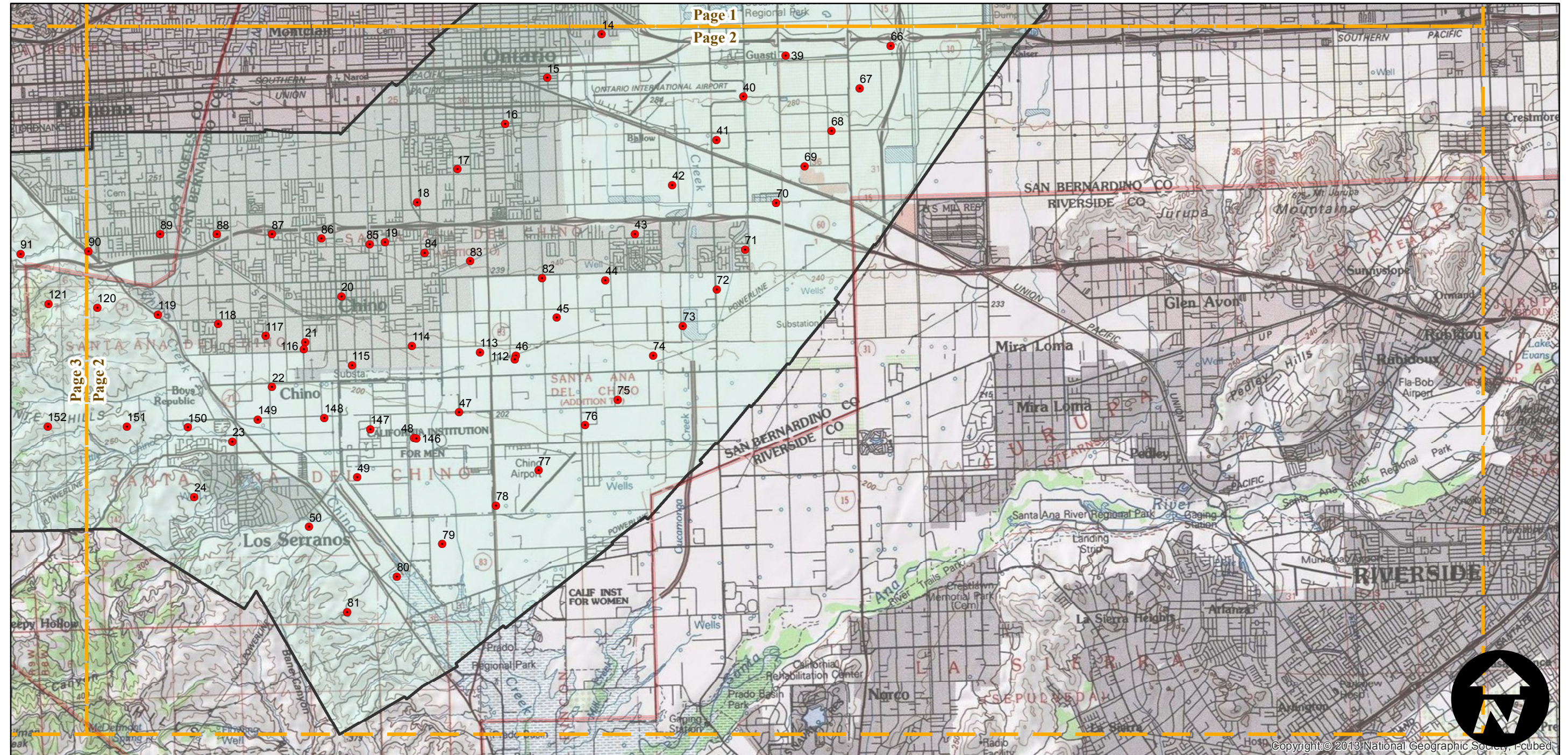
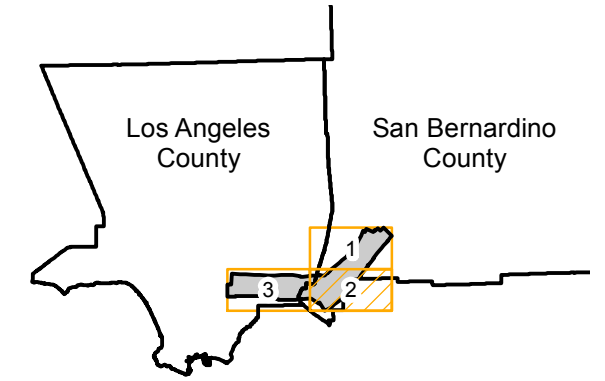


# C-3668

Counties: Los Angeles, San Bernardino  
Flight date(s): 09-06-1935 to 09-08-1935  
Scale: 1:21,000  
Overlap: 60%

Note: Rancho Cucamonga to Whittier Narrows. Some imagery acquired from Teledyne, Inc., 1986; nitrate film and prints acquired from Whittier College, January 2013.

## FLIGHT LOCATION





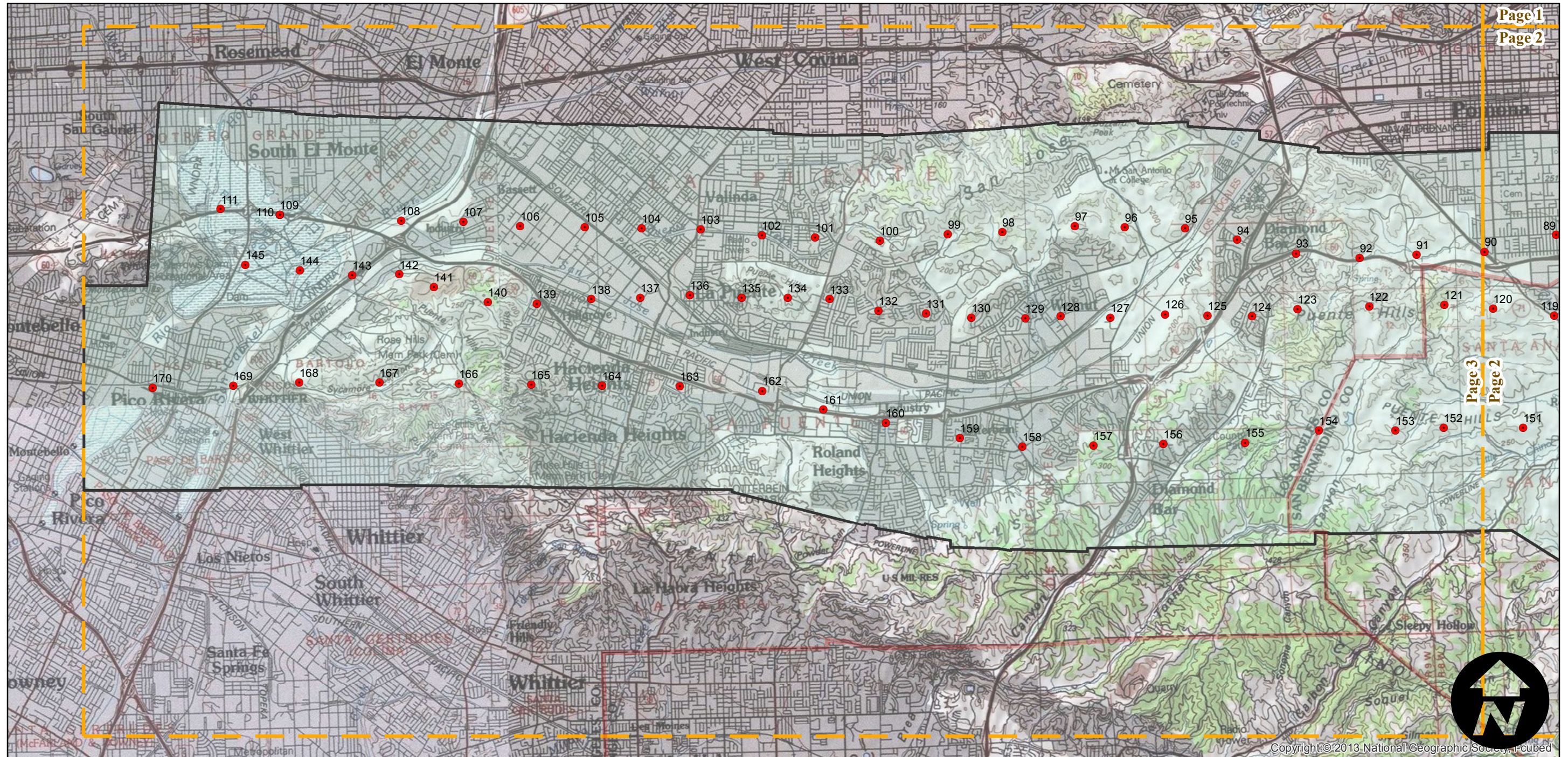
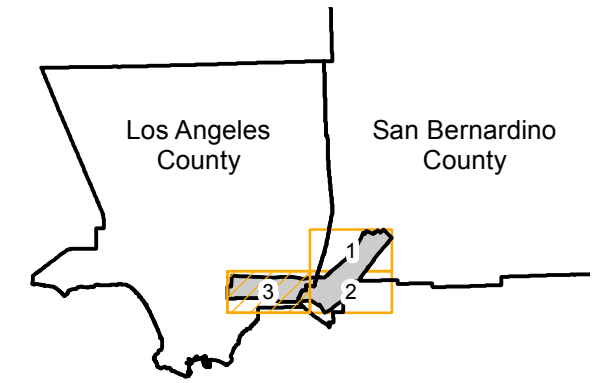
# C-3668

Counties: Los Angeles, San Bernardino  
Flight date(s): 09-06-1935 to 09-08-1935  
Scale: 1:21,000  
Overlap: 60%

Note: Rancho Cucamonga to Whittier Narrows. Some imagery acquired from Teledyne, Inc., 1986; nitrate film and prints acquired from Whittier College, January 2013.

Complete Metadata:  
<http://www.library.ucsb.edu/mil/aerial-photography-tools>

## FLIGHT LOCATION



0 1.5 3 6 Miles