

# C-3359

Counties: Monterey, San Luis Obispo

Flight date(s): 02-16-1935

Scale: 1:16,200

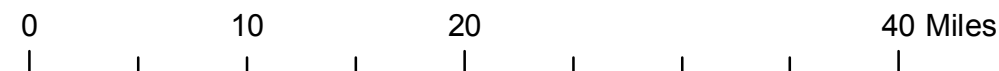
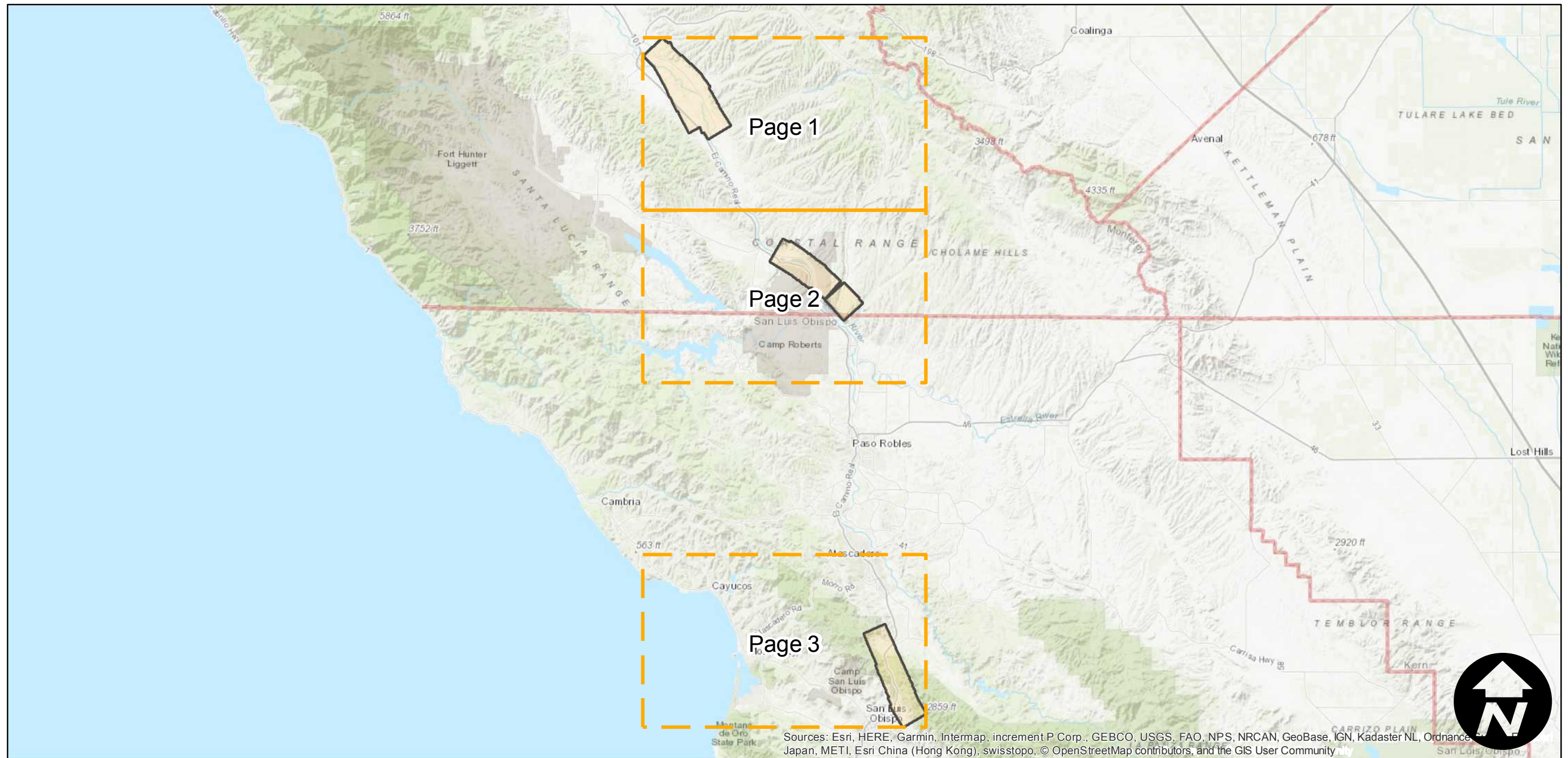
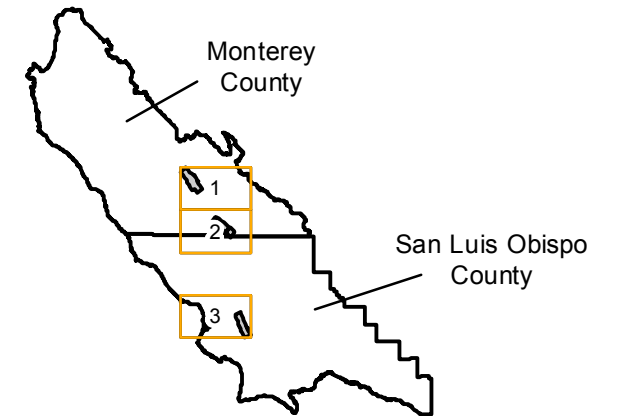
Overlap: 60-90%

Complete Metadata:

<https://www.library.ucsb.edu/src/airphotos/aerial-photography-information>

Note: Vicinity of San Ardo, Bradley, East Garrison, and the Cuesta Grade near San Luis Obispo. Acquired from Whittier College, January 2013. Nitrate negatives scanned, May 2015.

## FLIGHT LOCATION



Index to Aerial Photography  
Page Key

Scale of this index: 1:560,000

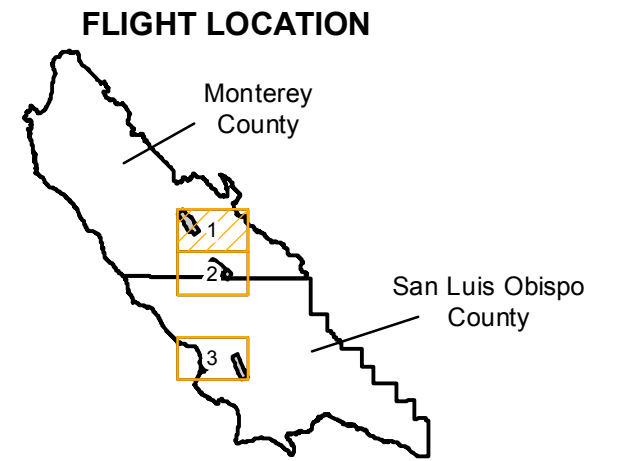
Sources: Esri, HERE, Garmin, Intermap, increment P Corp., GEBCO, USGS, FAO, NPS, NRCAN, GeoBase, IGN, Kadaster NL, Ordnance Survey, Esri Japan, METI, Esri China (Hong Kong), swisstopo, © OpenStreetMap contributors, and the GIS User Community



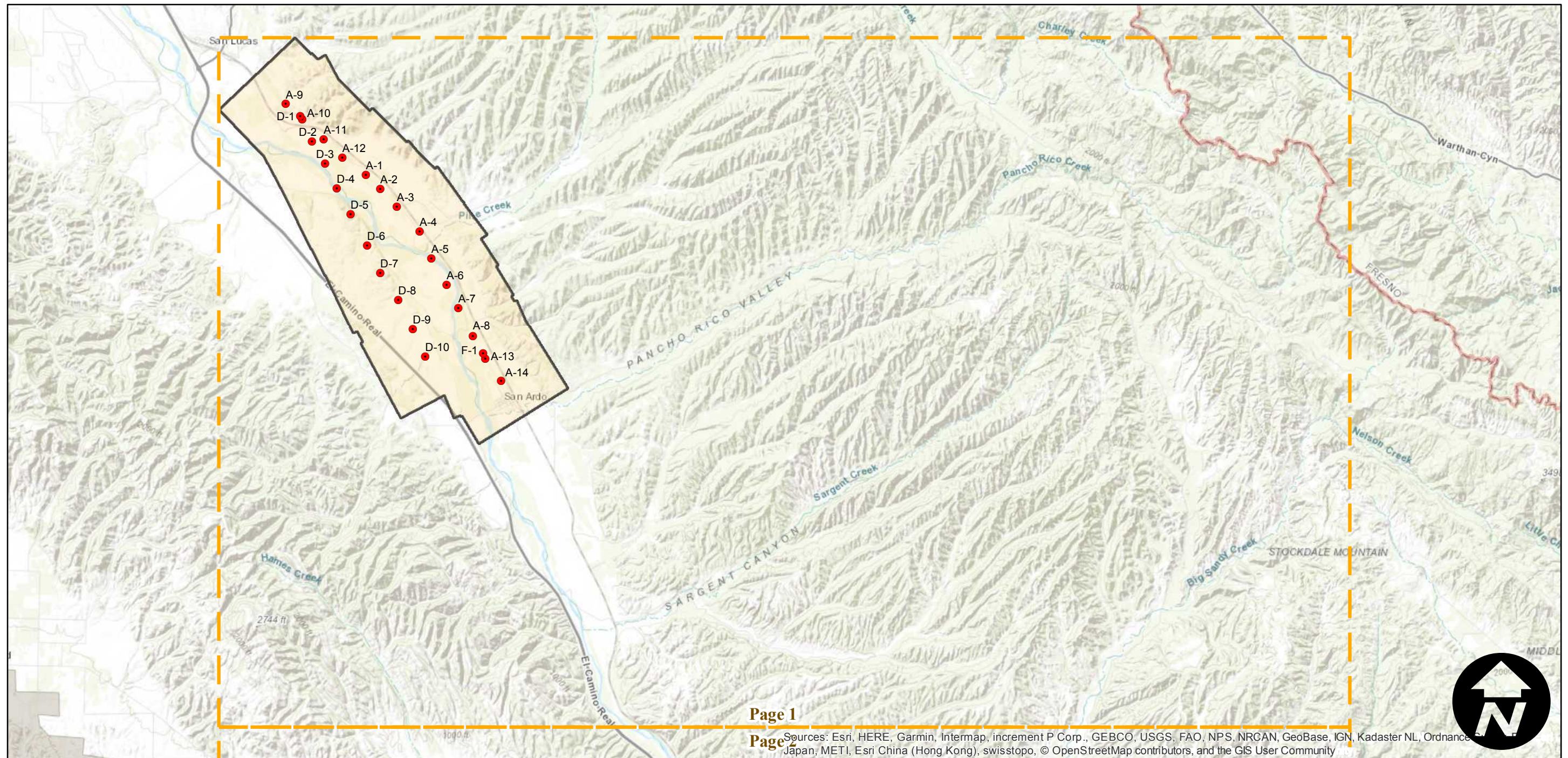
# C-3359

Counties: Monterey, San Luis Obispo  
Flight date(s): 02-16-1935  
Scale: 1:16,200  
Overlap: 60-90%

Note: Vicinity of San Ardo, Bradley, East Garrison, and the Cuesta Grade near San Luis Obispo. Acquired from Whittier College, January 2013. Nitrate negatives scanned, May 2015.



Complete Metadata:  
<https://www.library.ucsb.edu/src/airphotos/aerial-photography-information>



0 2 4 8 Miles

Index to Aerial Photography  
Page 1 of 3

Scale of this index: 1:140,000



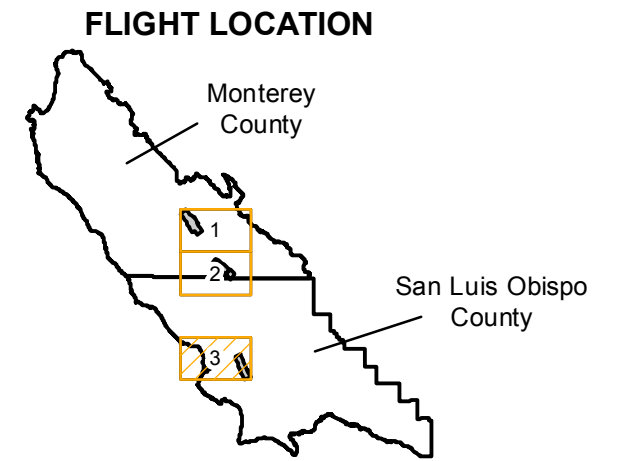




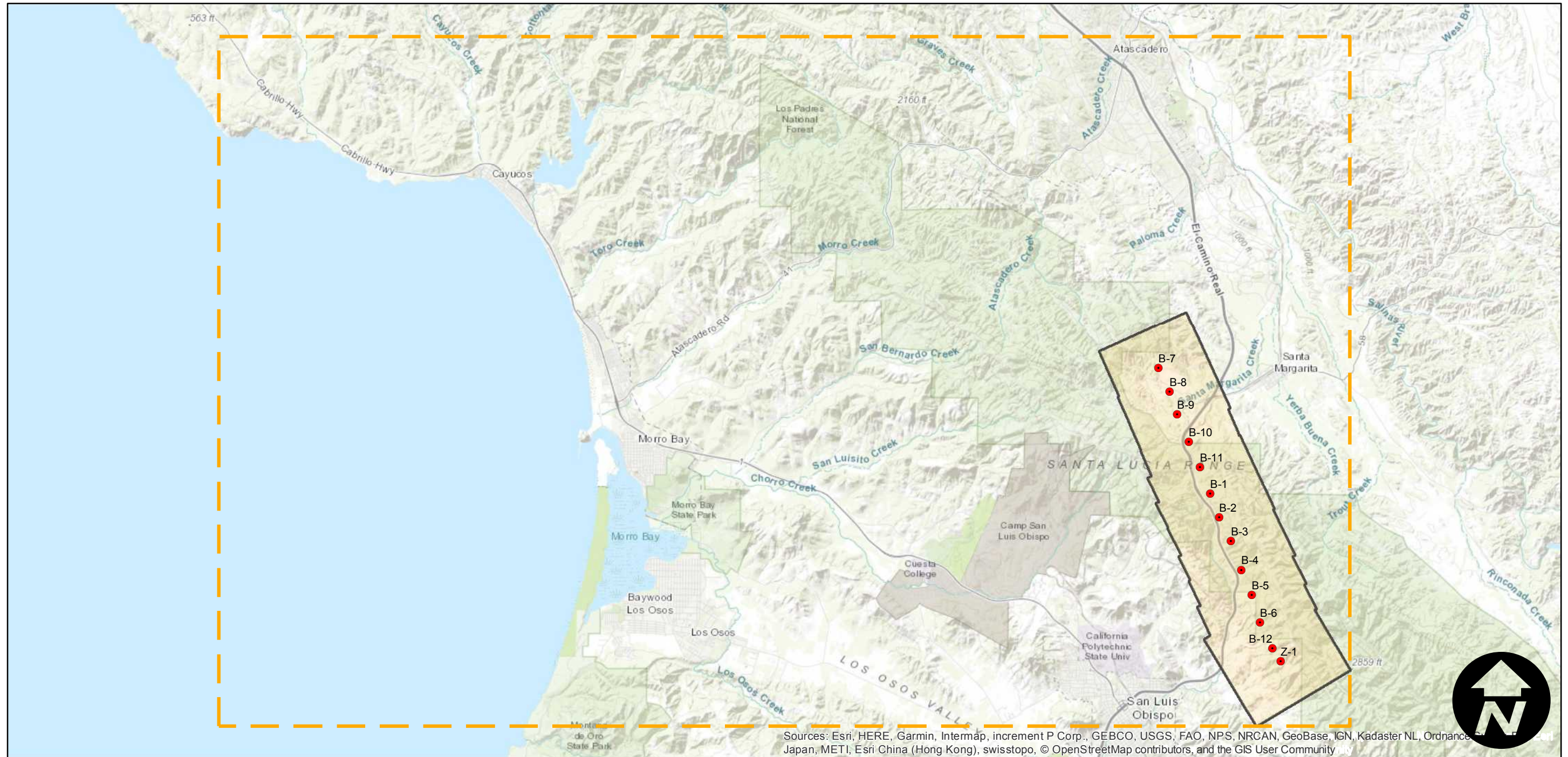
# C-3359

Counties: Monterey, San Luis Obispo  
Flight date(s): 02-16-1935  
Scale: 1:16,200  
Overlap: 60-90%

Note: Vicinity of San Ardo, Bradley, East Garrison, and the Cuesta Grade near San Luis Obispo. Acquired from Whittier College, January 2013. Nitrate negatives scanned, May 2015.



Complete Metadata:  
<https://www.library.ucsb.edu/src/airphotos/aerial-photography-information>



Sources: Esri, HERE, Garmin, Intermap, increment P Corp., GEBCO, USGS, FAO, NPS, NRCAN, GeoBase, IGN, Kadaster NL, Ordnance Survey, Esri Japan, METI, Esri China (Hong Kong), swisstopo, © OpenStreetMap contributors, and the GIS User Community