

C-3227 (San Bernardino)

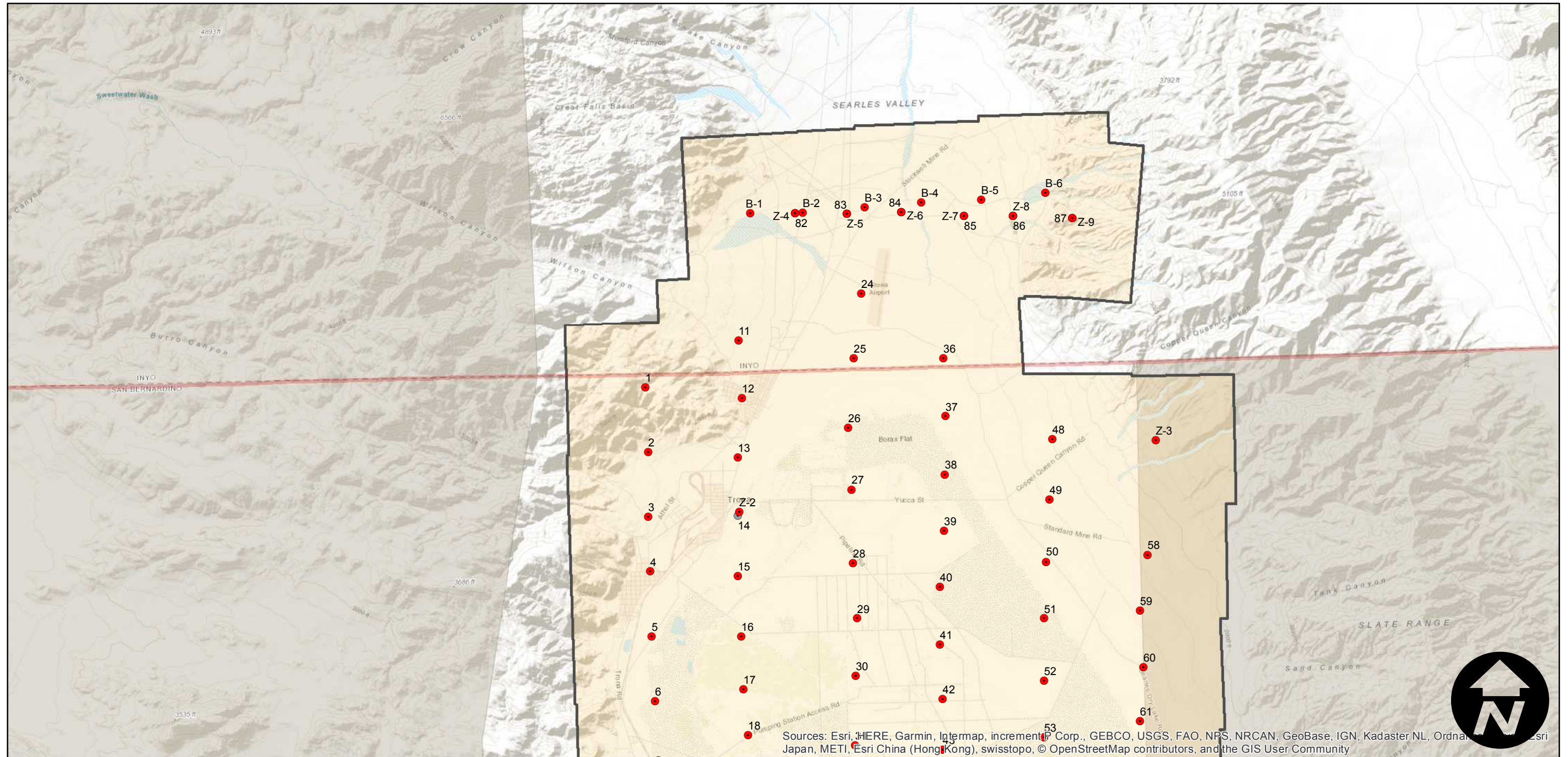
Counties: San Bernardino, Inyo
 Flight date(s): 10-16-1934
 Scale: 1:18,000
 Overlap: 60-100%

Complete Metadata:
<https://www.library.ucsb.edu/src/airphotos/aerial-photography-information>

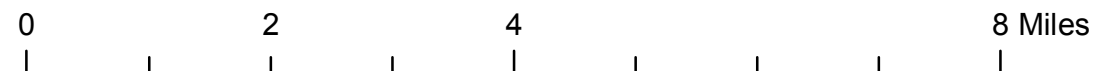
Note: Searles Lake, Valley Wells, and Kramer Borate areas. Acquired from Whittier College, January 2013. Nitrate negatives scanned, May 2015.

- MIL owns frame
- MIL does not own frame

FLIGHT LOCATION



Sources: Esri, HERE, Garmin, Intermap, increment P Corp., GEBCO, USGS, FAO, NPS, NRCAN, GeoBase, IGN, Kadaster NL, Ordnance Survey, Esri Japan, METI, Esri China (Hong Kong), swisstopo, © OpenStreetMap contributors, and the GIS User Community



C-3227 (San Bernardino)

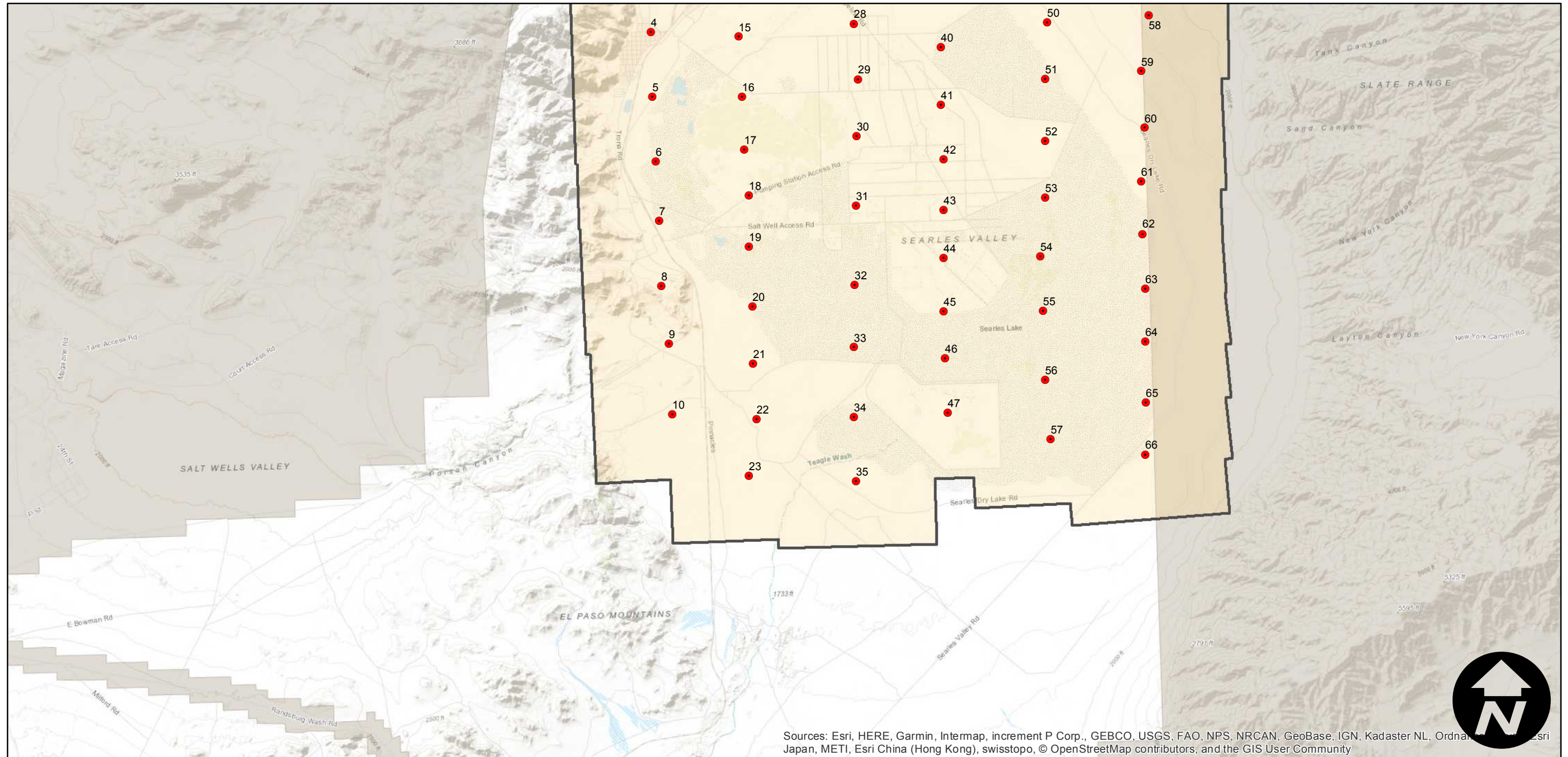
Counties: San Bernardino, Inyo
Flight date(s): 10-16-1934
Scale: 1:18,000
Overlap: 60-100%

Complete Metadata:
<https://www.library.ucsb.edu/src/airphotos/aerial-photography-information>

Note: Searles Lake, Valley Wells, and Kramer Borate areas. Acquired from Whittier College, January 2013. Nitrate negatives scanned, May 2015.

- MIL owns frame
- MIL does not own frame

FLIGHT LOCATION



Sources: Esri, HERE, Garmin, Intermap, increment P Corp., GEBCO, USGS, FAO, NPS, NRCAN, GeoBase, IGN, Kadaster NL, Ordnance Survey, Esri Japan, METI, Esri China (Hong Kong), swisstopo, © OpenStreetMap contributors, and the GIS User Community

0 2 4 8 Miles

Index to Aerial Photography
Page 2 of 2

Scale of this index: 1:100,000

