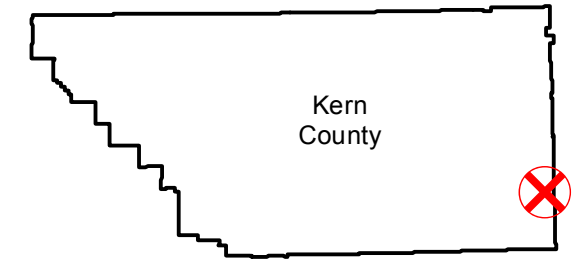


C-3227 (Kern)

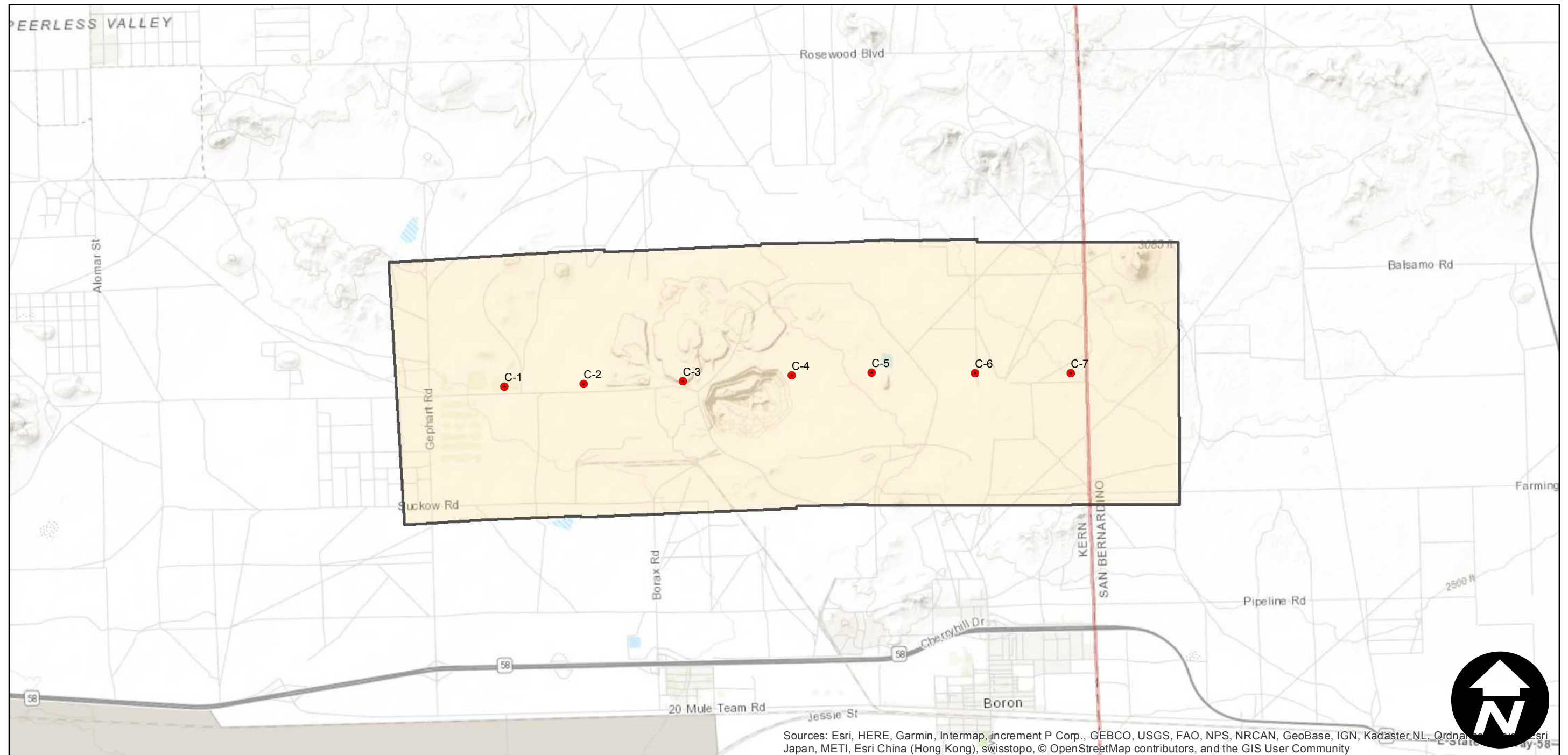
Counties: Kern
Flight date(s): 10-16-1934
Scale: 1:18,000
Overlap: 60%

Note: Searles Lake, Valley Wells, and Kramer Borate areas. Acquired from Whittier College, January 2013. Nitrate negatives scanned, May 2015.

FLIGHT LOCATION



Complete Metadata:
<https://www.library.ucsb.edu/src/airphotos/aerial-photography-information>



Sources: Esri, HERE, Garmin, Intermap, increment P Corp., GEBCO, USGS, FAO, NPS, NRCAN, GeoBase, IGN, Kadaster NL, Ordnance Survey, Esri Japan, METI, Esri China (Hong Kong), swisstopo, © OpenStreetMap contributors, and the GIS User Community

0 1 2 4 Miles