

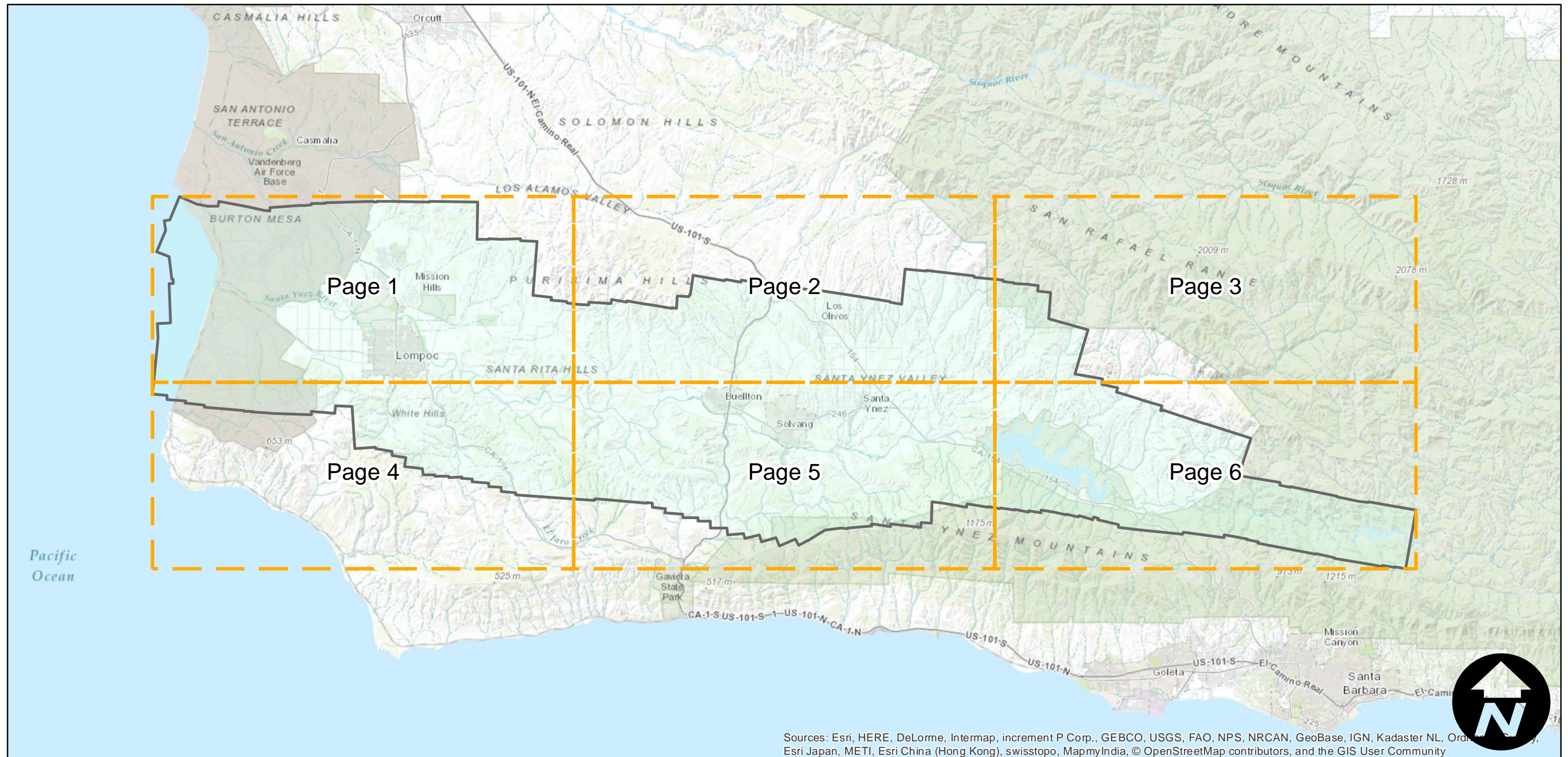
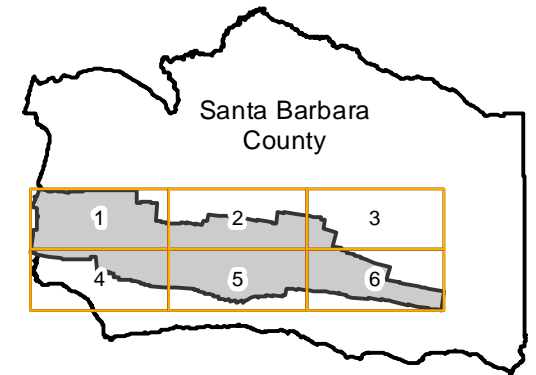
C-311A

Counties: Santa Barbara
Flight date(s): 03-11-1928
Scale: 1:18,000
Overlap: 60%

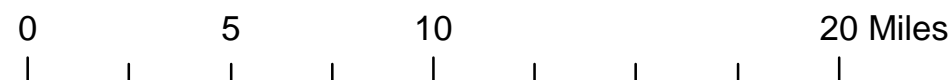
Complete Metadata:
<http://www.library.ucsb.edu/mil/aerial-photography-tools>

Note: Santa Ynez River Valley: Pacific Ocean to Solvang. Overlap within flightlines in not consistent. Frame numbers with Z-prefix only in nitrate film and digital formats. Flight C-311A replaces C-311-SY. Prints and nitrate film acquired from Whittier College, January 2013; nitrate negatives scanned January 2015. Copy negatives were made from paper prints acquired from Santa Barbara County Resource Management Department.

FLIGHT LOCATION



Sources: Esri, HERE, DeLorme, Intermap, increment P Corp., GEBCO, USGS, FAO, NPS, NRCAN, GeoBase, IGN, Kadaster NL, Ordnance Survey, Esri Japan, METI, Esri China (Hong Kong), swisstopo, MapmyIndia, © OpenStreetMap contributors, and the GIS User Community



Index to Aerial Photography
Page Key

Scale of this index: 1:300,000

C-311A

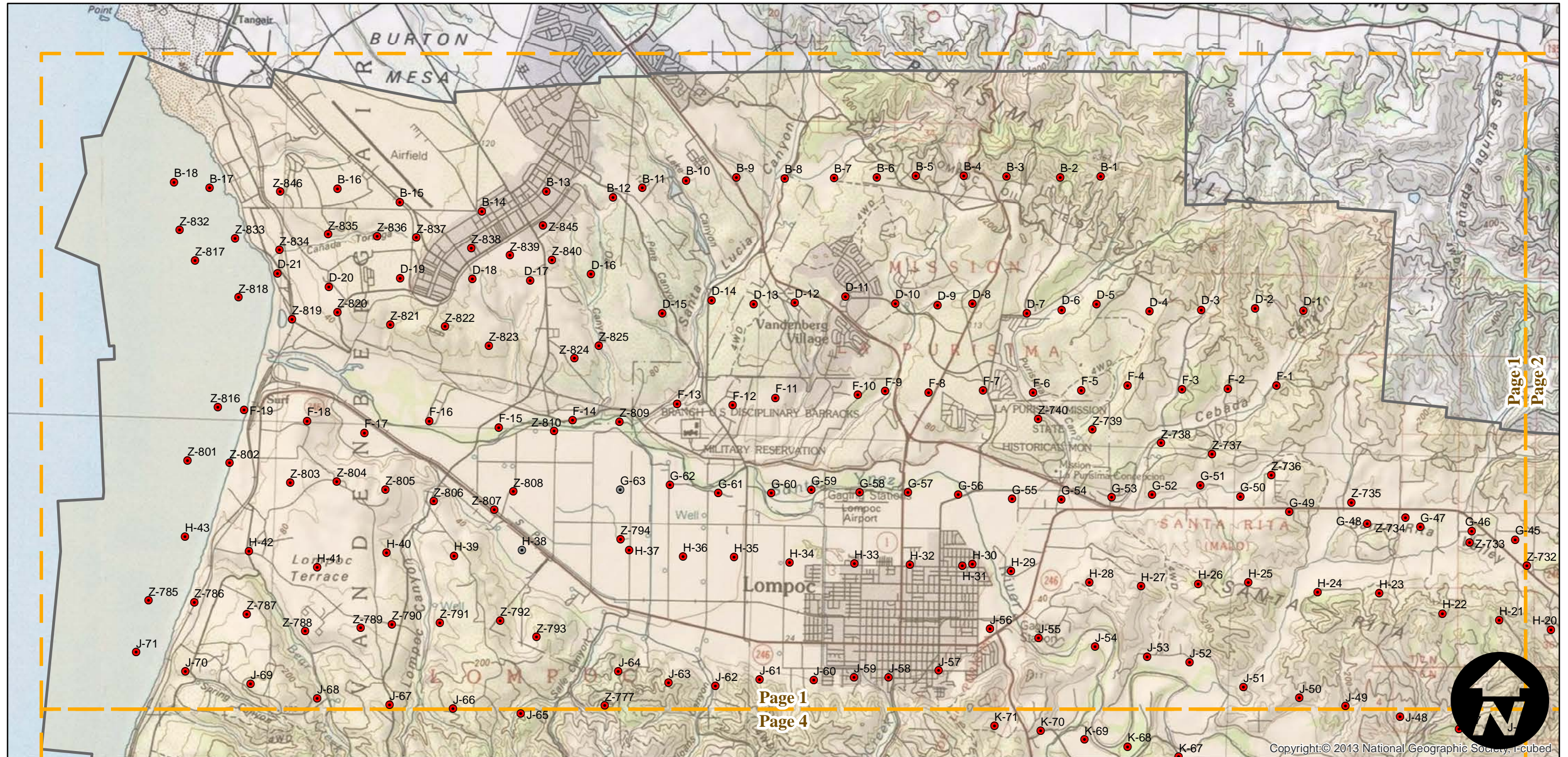
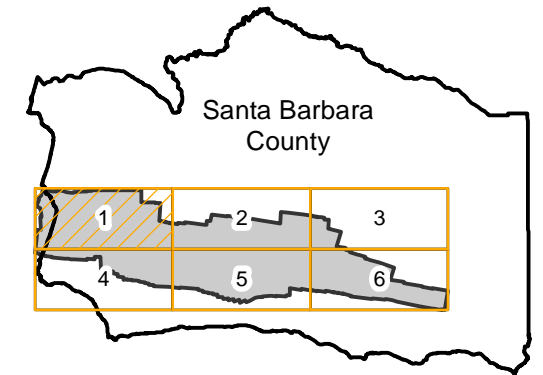
Counties: Santa Barbara
Flight date(s): 03-11-1928
Scale: 1:18,000
Overlap: 60%

Complete Metadata:
<http://www.library.ucsb.edu/mil/aerial-photography-tools>

Note: Santa Ynez River Valley: Pacific Ocean to Solvang. Overlap within flightlines is not consistent. Frame numbers with Z-prefix only in nitrate film and digital formats. Flight C-311A replaces C-311-SY. Prints and nitrate film acquired from Whittier College, January 2013; nitrate negatives scanned January 2015. Copy negatives were made from paper prints acquired from Santa Barbara County Resource Management Department.

- MIL owns frame
- MIL does not own frame

FLIGHT LOCATION



0 1 2 4 Miles

Index to Aerial Photography
Page 1 of 6

Scale of this index: 1:85,000

Copyright:© 2013 National Geographic Society, I-cubed

C-311A

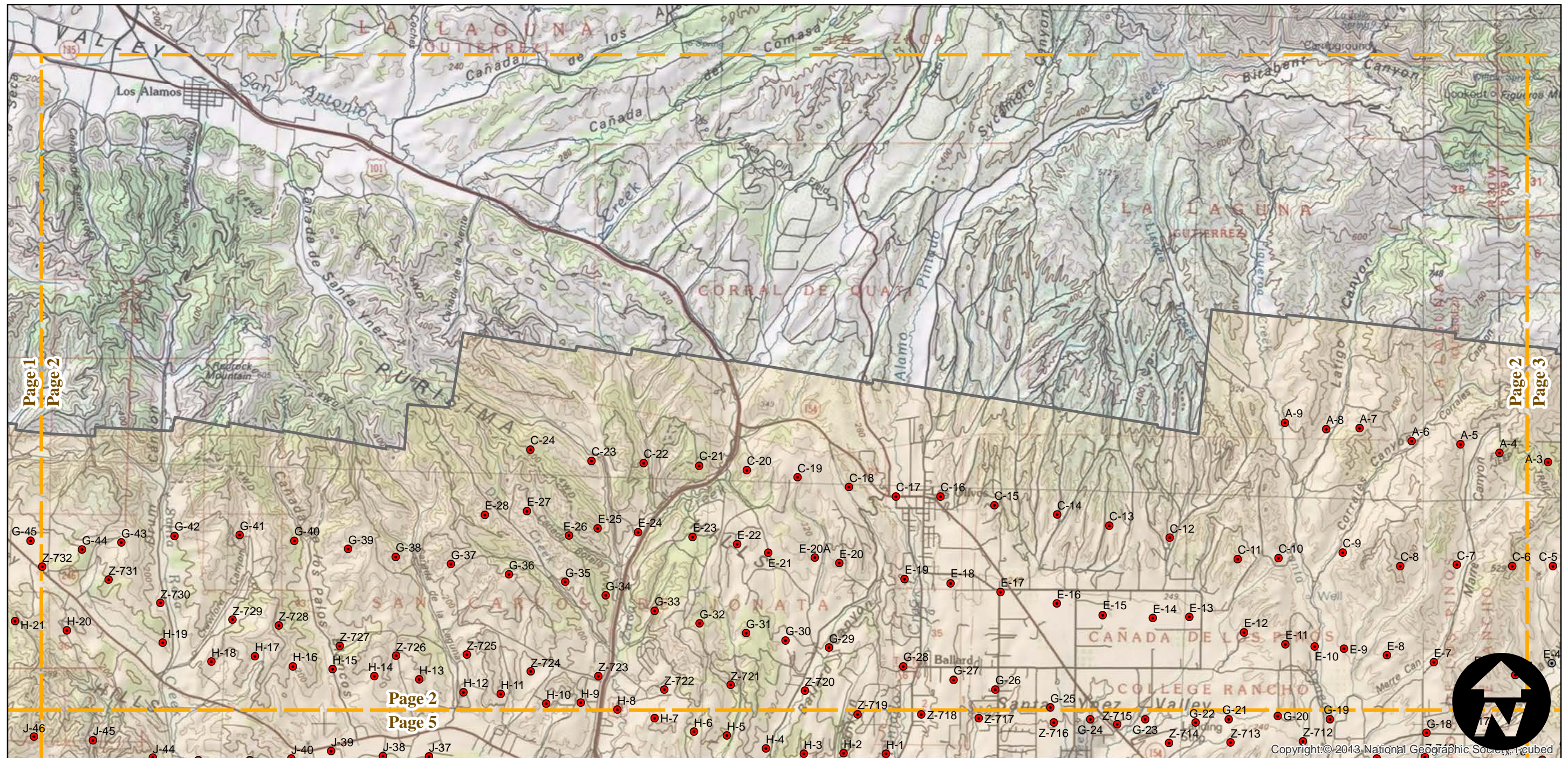
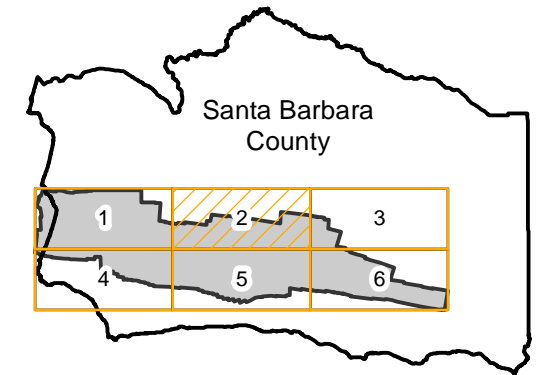
Counties: Santa Barbara
Flight date(s): 03-11-1928
Scale: 1:18,000
Overlap: 60%

Complete Metadata:
<http://www.library.ucsb.edu/mil/aerial-photography-tools>

Note: Santa Ynez River Valley: Pacific Ocean to Solvang. Overlap within flightlines in not consistent. Frame numbers with Z-prefix only in nitrate film and digital formats. Flight C-311A replaces C-311-SY. Prints and nitrate film acquired from Whittier College, January 2013; nitrate negatives scanned January 2015. Copy negatives were made from paper prints acquired from Santa Barbara County Resource Management Department.

- MIL owns frame
- MIL does not own frame

FLIGHT LOCATION



0 1 2 4 Miles

Index to Aerial Photography
Page 2 of 6

Scale of this index: 1:85,000

C-311A

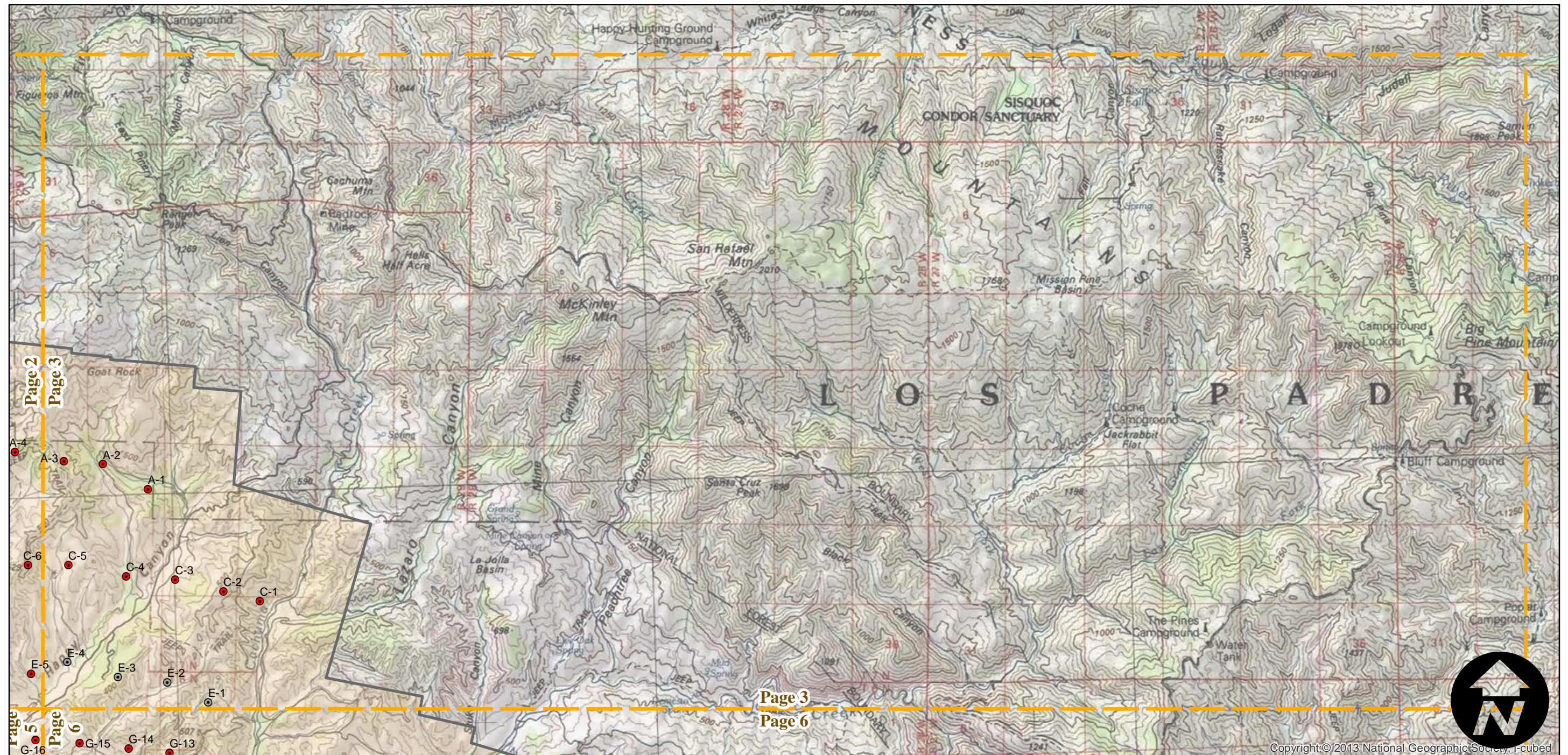
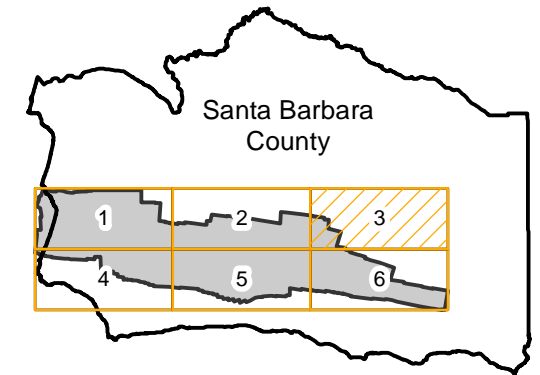
Counties: Santa Barbara
 Flight date(s): 03-11-1928
 Scale: 1:18,000
 Overlap: 60%

Complete Metadata:
<http://www.library.ucsb.edu/mil/aerial-photography-tools>

Note: Santa Ynez River Valley: Pacific Ocean to Solvang. Overlap within flightlines is not consistent. Frame numbers with Z-prefix only in nitrate film and digital formats. Flight C-311A replaces C-311-SY. Prints and nitrate film acquired from Whittier College, January 2013; nitrate negatives scanned January 2015. Copy negatives were made from paper prints acquired from Santa Barbara County Resource Management Department.

- MIL owns frame
- MIL does not own frame

FLIGHT LOCATION



0 1 2 4 Miles



C-311A

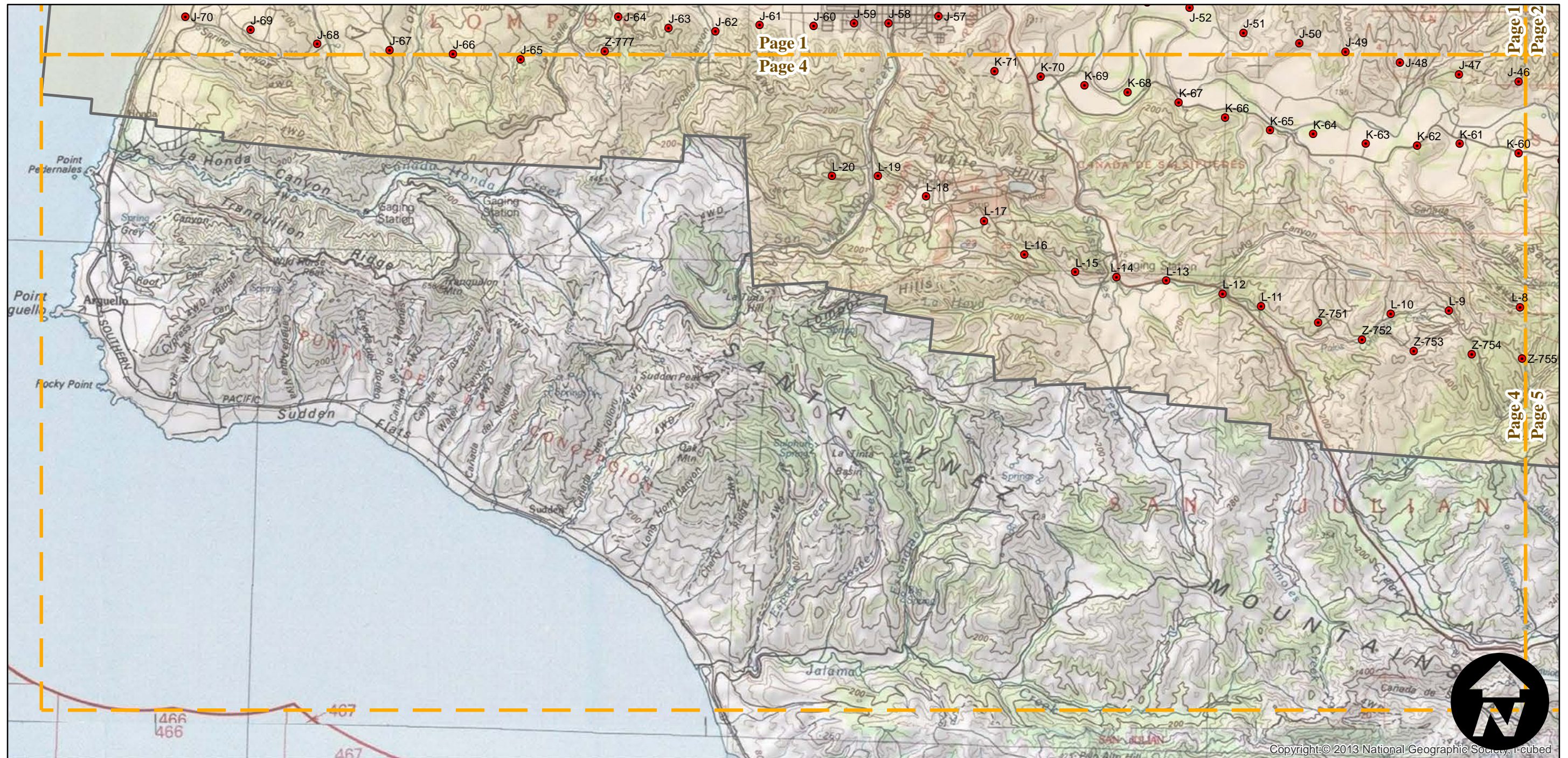
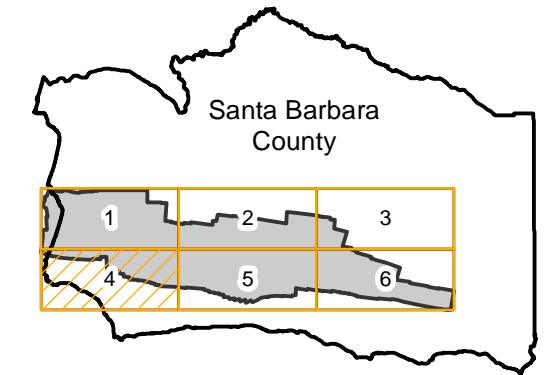
Counties: Santa Barbara
 Flight date(s): 03-11-1928
 Scale: 1:18,000
 Overlap: 60%

Complete Metadata:
<http://www.library.ucsb.edu/mil/aerial-photography-tools>

Note: Santa Ynez River Valley: Pacific Ocean to Solvang. Overlap within flightlines in not consistent. Frame numbers with Z-prefix only in nitrate film and digital formats. Flight C-311A replaces C-311-SY. Prints and nitrate film acquired from Whittier College, January 2013; nitrate negatives scanned January 2015. Copy negatives were made from paper prints acquired from Santa Barbara County Resource Management Department.

- MIL owns frame
- MIL does not own frame

FLIGHT LOCATION



0 1 2 4 Miles

C-311A

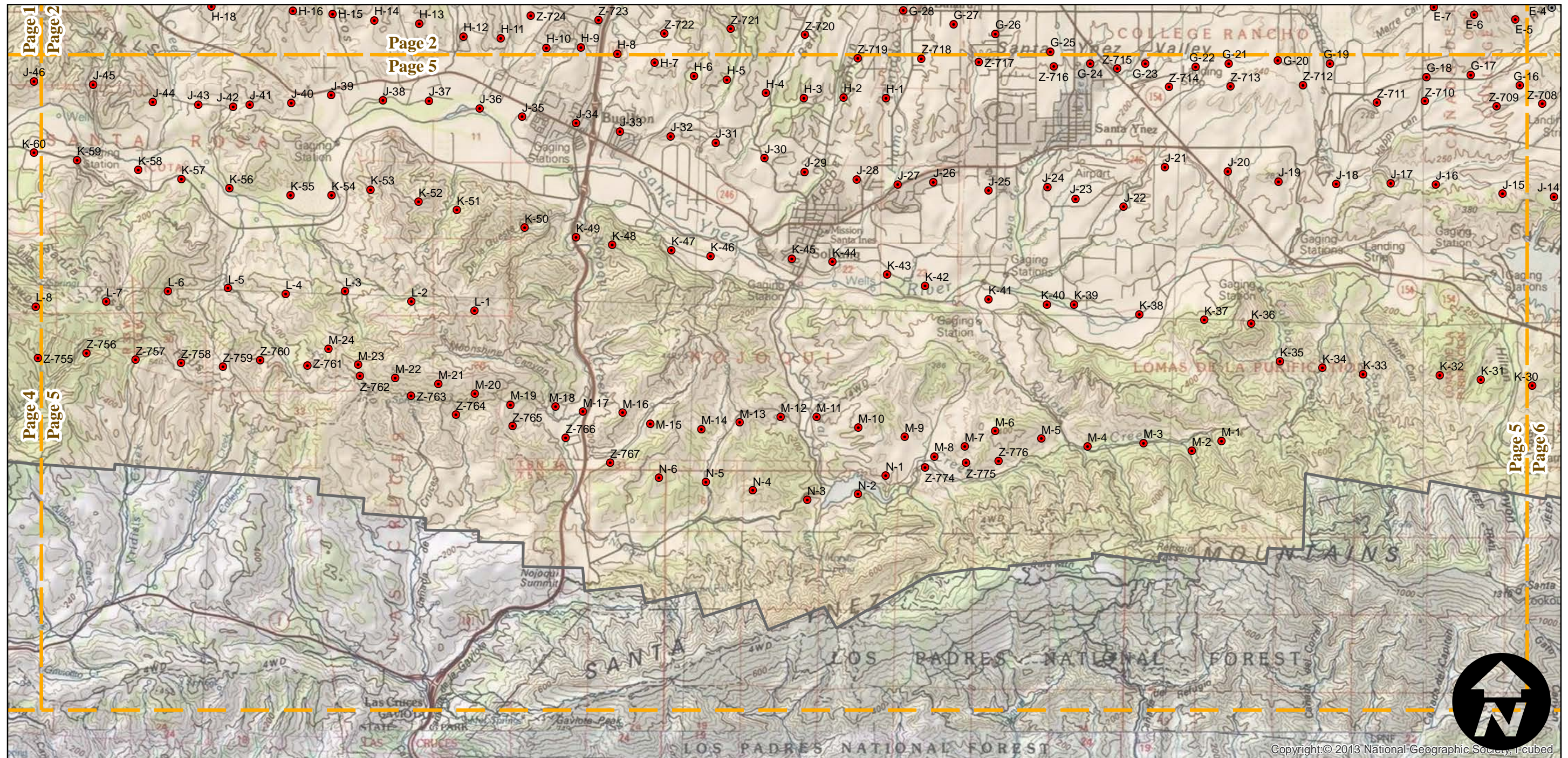
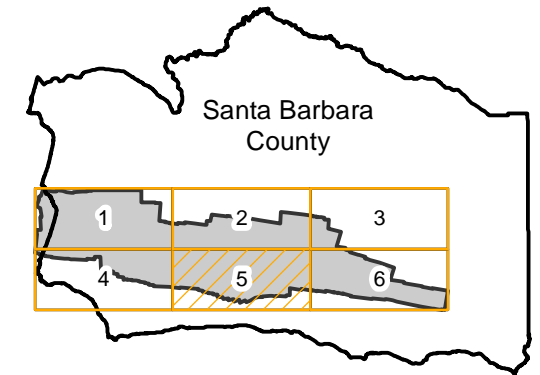
Counties: Santa Barbara
Flight date(s): 03-11-1928
Scale: 1:18,000
Overlap: 60%

Complete Metadata:
<http://www.library.ucsb.edu/mil/aerial-photography-tools>

Note: Santa Ynez River Valley: Pacific Ocean to Solvang. Overlap within flightlines is not consistent. Frame numbers with Z-prefix only in nitrate film and digital formats. Flight C-311A replaces C-311-SY. Prints and nitrate film acquired from Whittier College, January 2013; nitrate negatives scanned January 2015. Copy negatives were made from paper prints acquired from Santa Barbara County Resource Management Department.

- MIL owns frame
- MIL does not own frame

FLIGHT LOCATION



0 1 2 4 Miles

Index to Aerial Photography
Page 5 of 6

Scale of this index: 1:85,000

Copyright © 2013 National Geographic Society, i-cubed

C-311A

Counties: Santa Barbara
Flight date(s): 03-11-1928
Scale: 1:18,000
Overlap: 60%

Complete Metadata:
<http://www.library.ucsb.edu/mil/aerial-photography-tools>

Note: Santa Ynez River Valley: Pacific Ocean to Solvang. Overlap within flightlines in not consistent. Frame numbers with Z-prefix only in nitrate film and digital formats. Flight C-311A replaces C-311-SY. Prints and nitrate film acquired from Whittier College, January 2013; nitrate negatives scanned January 2015. Copy negatives were made from paper prints acquired from Santa Barbara County Resource Management Department.

- MIL owns frame
- MIL does not own frame

FLIGHT LOCATION

