

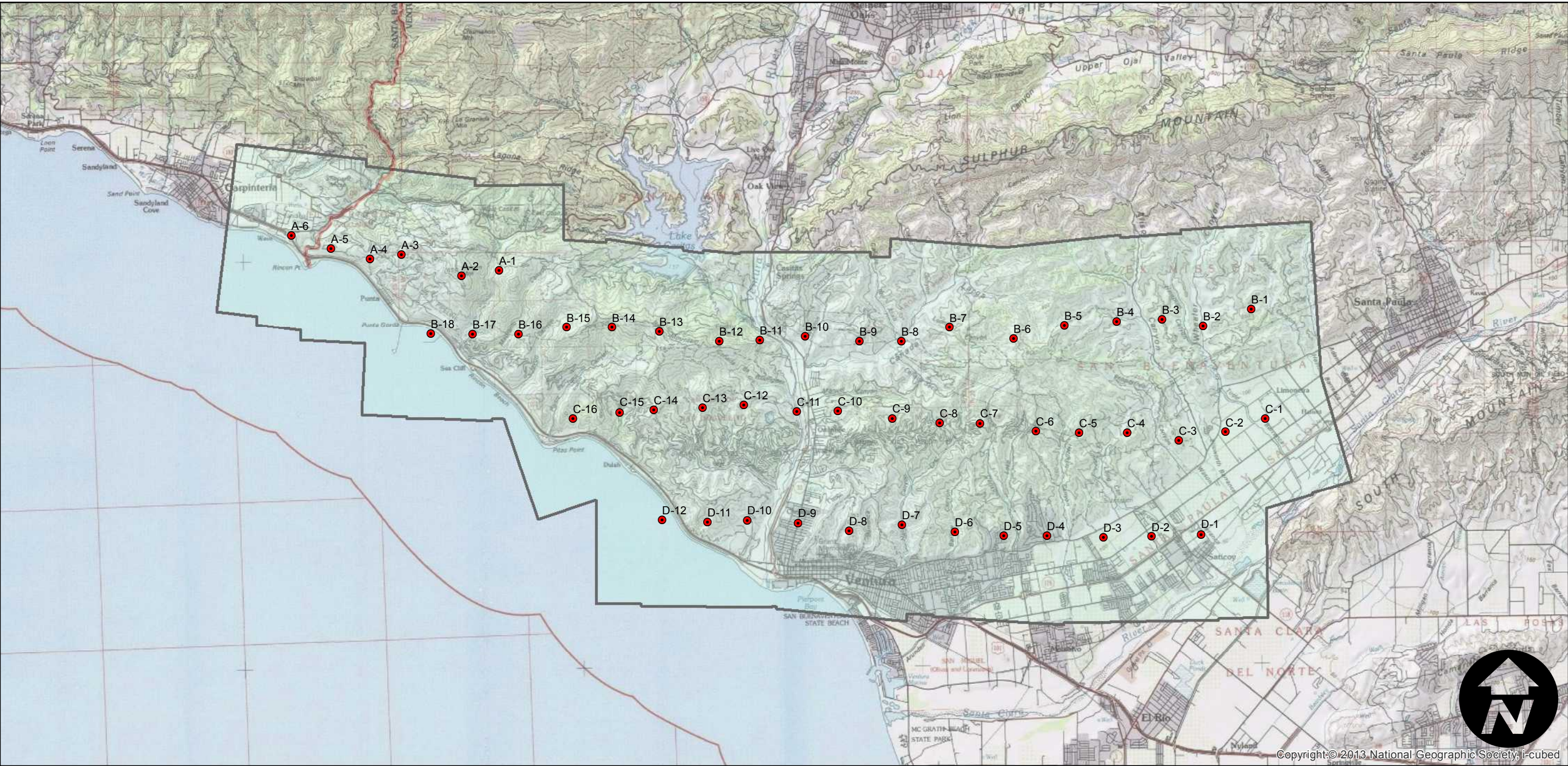
# C-297B

Counties: Ventura  
Flight date(s): 01-01-1928  
Scale: 1:24,000  
Overlap: 60%

Complete Metadata:  
<http://www.library.ucsb.edu/mil/aerial-photography-tools>

Note: Rincon Point to Ellsworth Barranca. Overlap within flightlines is inconsistent. Copy negatives acquired from Teledyne, Inc. were reproduced from original nitrate film. Prints acquired from Whittier College, January 2013.

## FLIGHT LOCATION



0 2.5 5 10 Miles

Index to Aerial Photography  
Page 1 of 1

Scale of this index: 1:140,000