

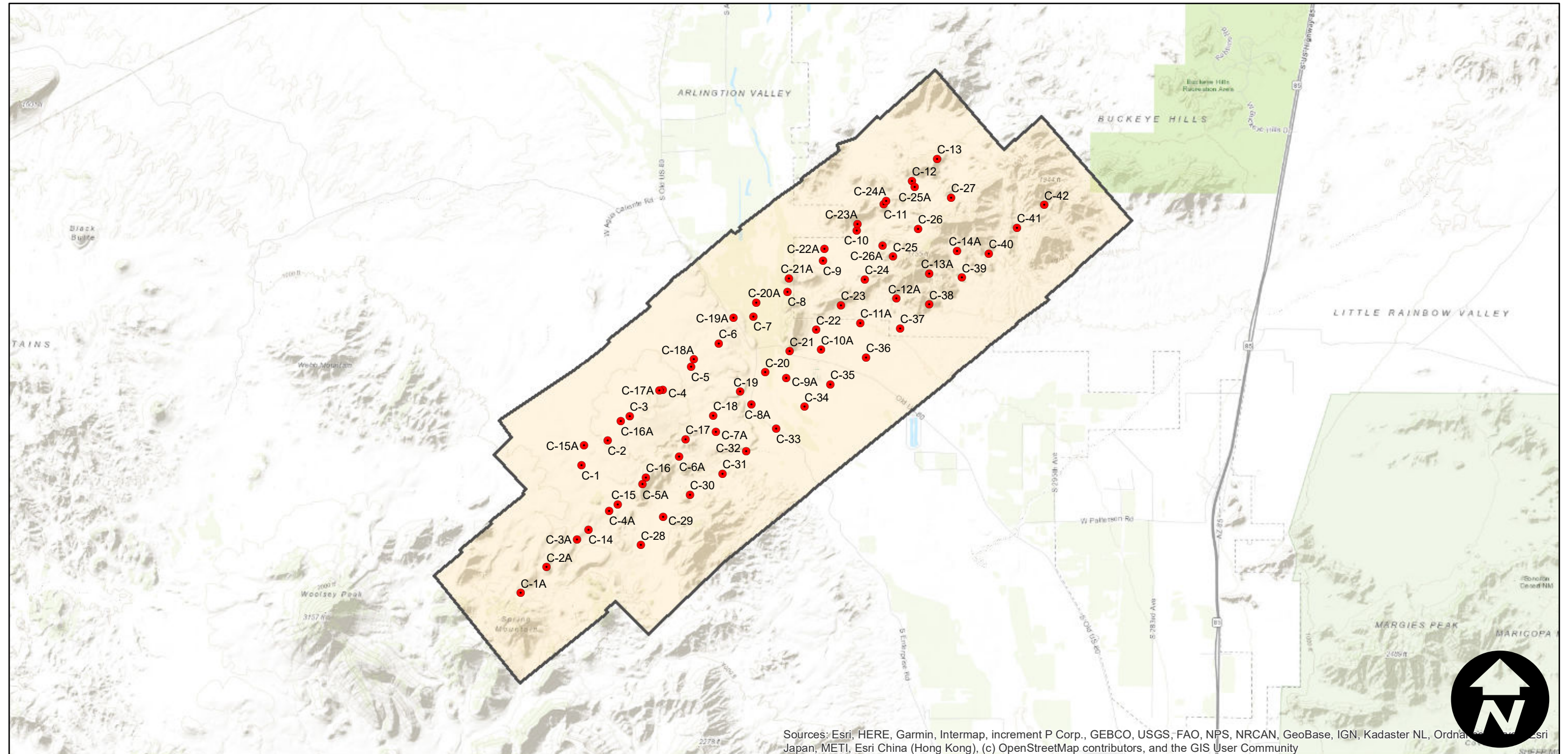
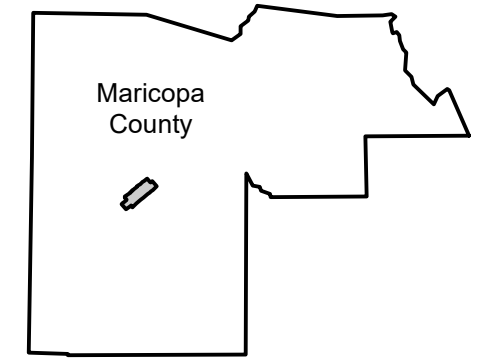
# C-2920C

Counties: Maricopa (Arizona)  
Flight date(s): 02-01-1934 to 02-28-1934  
Scale: 1:13,500  
Overlap: 60%

Complete Metadata:  
<https://www.library.ucsb.edu/src/airphotos/aerial-photography-information>

Note: Phoenix area: Imagery extends across Arlington Valley from Woolsey Peak in the southwest to the Buckeye Hills in the northeast. Copy negatives acquired from Teledyne, Inc. were made from original nitrate film. Prints and nitrate film acquired from Whittier College, January 2013. Nitrate negatives scanned April 2015.

## FLIGHT LOCATION



Sources: Esri, HERE, Garmin, Intermap, increment P Corp., GEBCO, USGS, FAO, NPS, NRCAN, GeoBase, IGN, Kadaster NL, Ordnance Survey, Esri Japan, METI, Esri China (Hong Kong), (c) OpenStreetMap contributors, and the GIS User Community

0 1 2 4 Miles

Scale of this index: 1:100,000