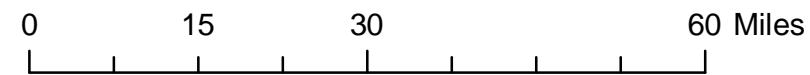
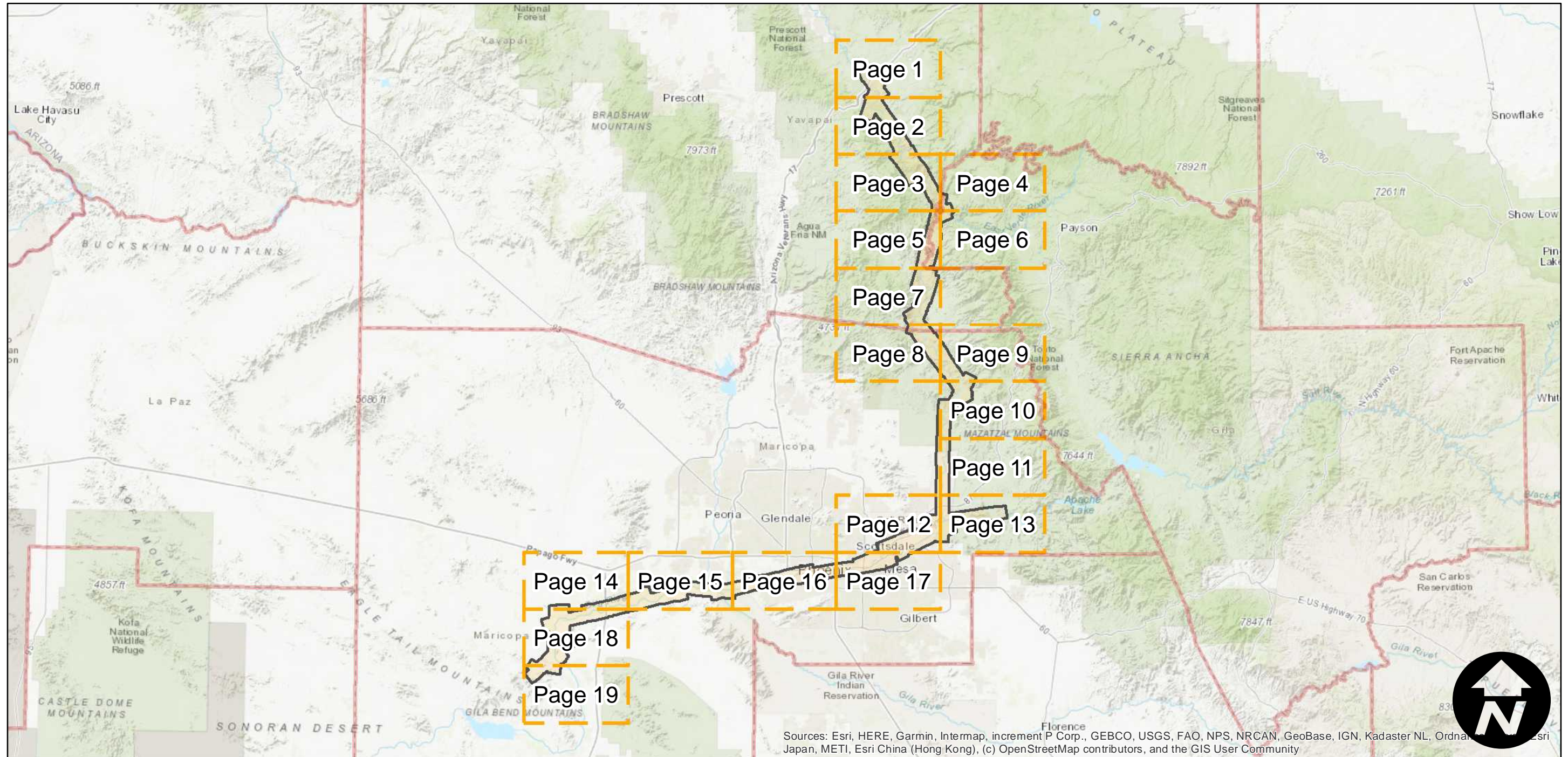
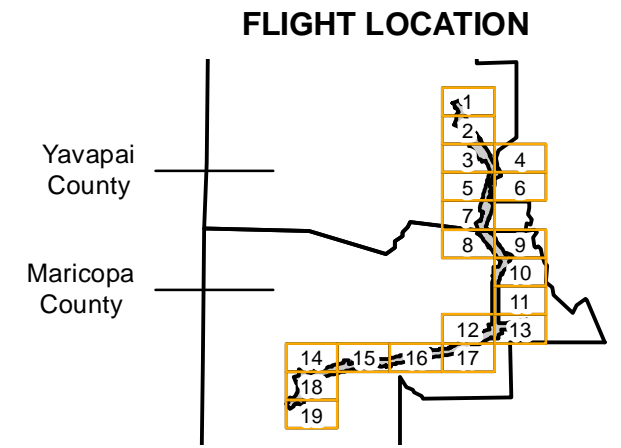


C-2920A

Counties: Maricopa, Yavapai (Arizona)
Flight date(s): 02-01-1934 to 02-28-1934
Scale: 1:13,500
Overlap: 60%

Note: Phoenix area: Alhambra to Tempe and Indian School Road to Salt River. Copy negatives acquired from Teledyne, Inc. were made from original nitrate film. Prints and nitrate film acquired from Whittier College, January 2013. Nitrate negatives scanned April 2015.

Complete Metadata:
<https://www.library.ucsb.edu/src/airphotos/aerial-photography-information>



Index to Aerial Photography
Page Key

Scale of this index: 1:1,080,000

Sources: Esri, HERE, Garmin, Intermap, increment P Corp., GEBCO, USGS, FAO, NPS, NRCAN, GeoBase, IGN, Kadaster NL, Ordnance Survey, Esri Japan, METI, Esri China (Hong Kong), (c) OpenStreetMap contributors, and the GIS User Community

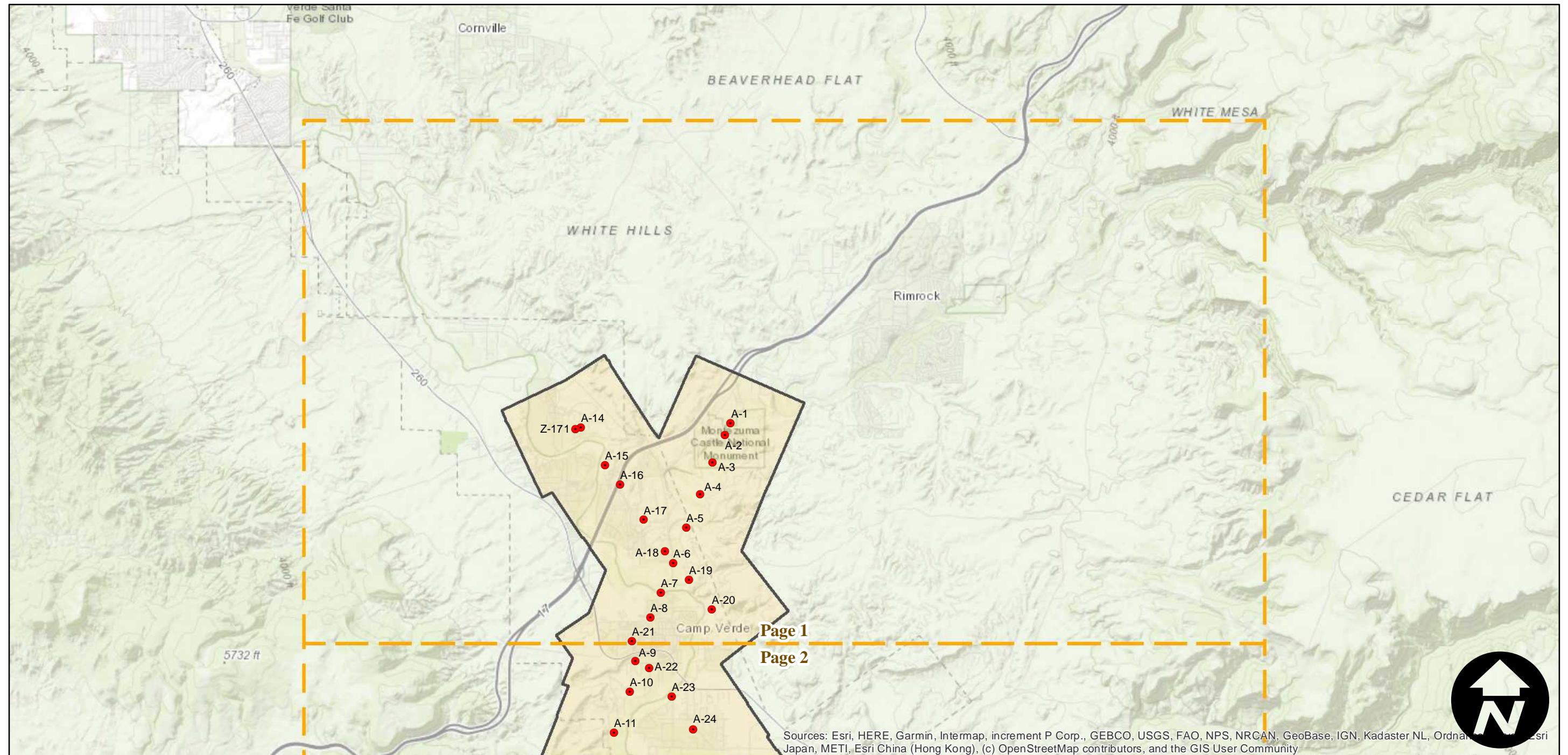
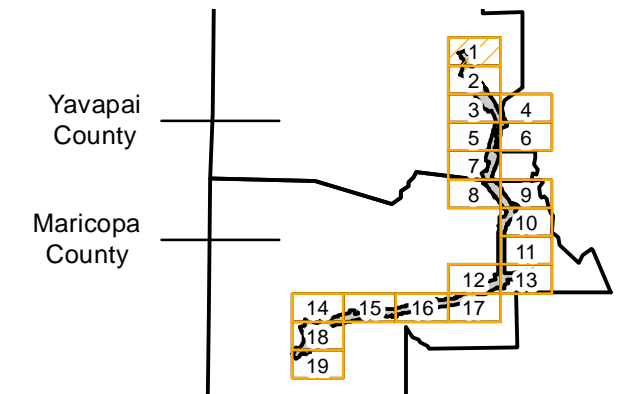
C-2920A

Counties: Maricopa, Yavapai (Arizona)
Flight date(s): 02-01-1934 to 02-28-1934
Scale: 1:13,500
Overlap: 60%

Note: Phoenix area: Alhambra to Tempe and Indian School Road to Salt River. Copy negatives acquired from Teledyne, Inc. were made from original nitrate film. Prints and nitrate film acquired from Whittier College, January 2013. Nitrate negatives scanned April 2015.

Complete Metadata:
<https://www.library.ucsb.edu/src/airphotos/aerial-photography-information>

FLIGHT LOCATION



Page 1

Page 2

Sources: Esri, HERE, Garmin, Intermap, increment P Corp., GEBCO, USGS, FAO, NPS, NRCAN, GeoBase, IGN, Kadaster NL, Ordnance Survey, Esri Japan, METI, Esri China (Hong Kong), (c) OpenStreetMap contributors, and the GIS User Community

0 1.25 2.5 5 Miles

Index to Aerial Photography
Page 1 of 19

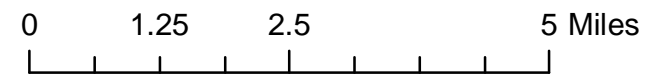
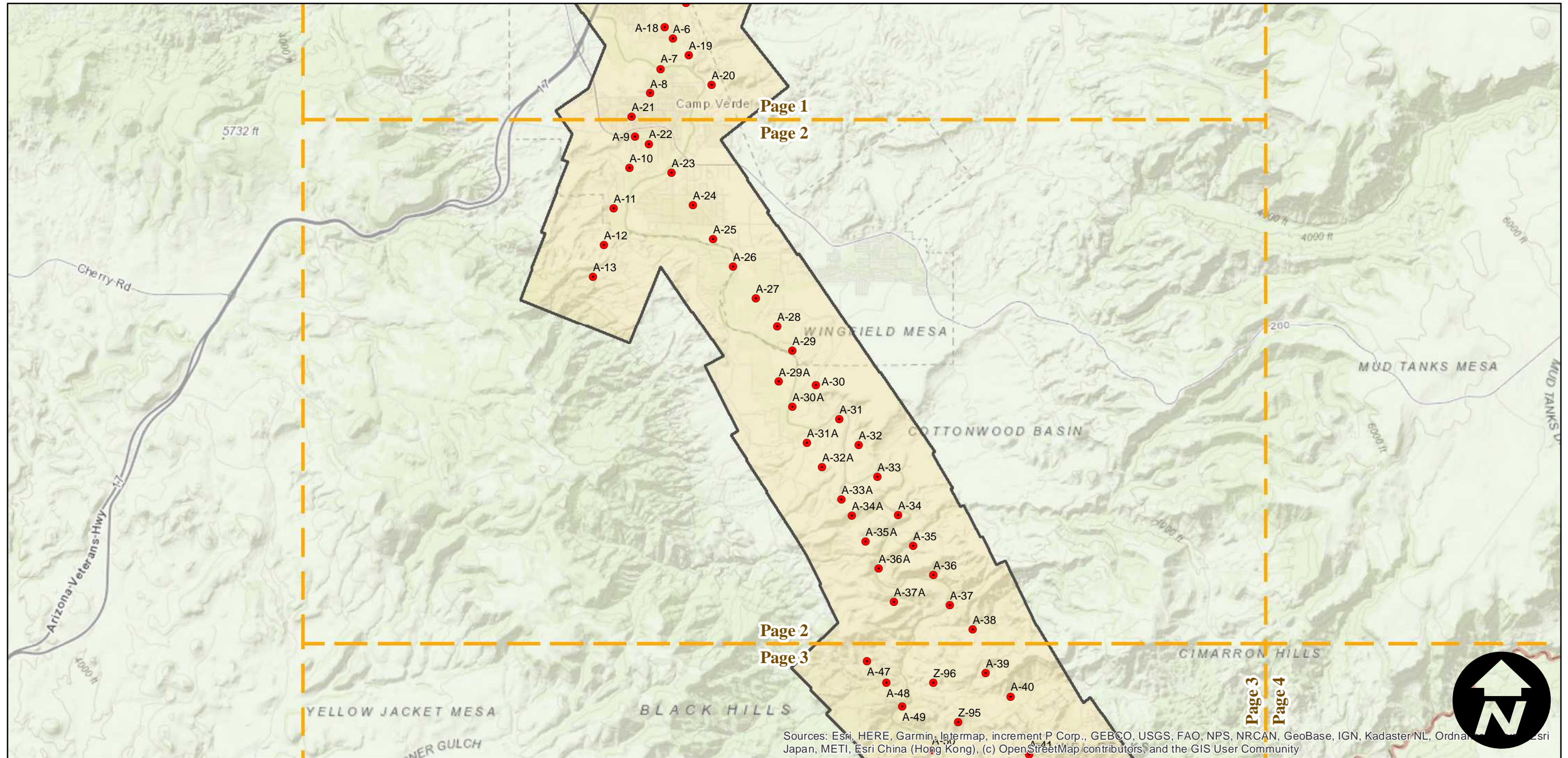
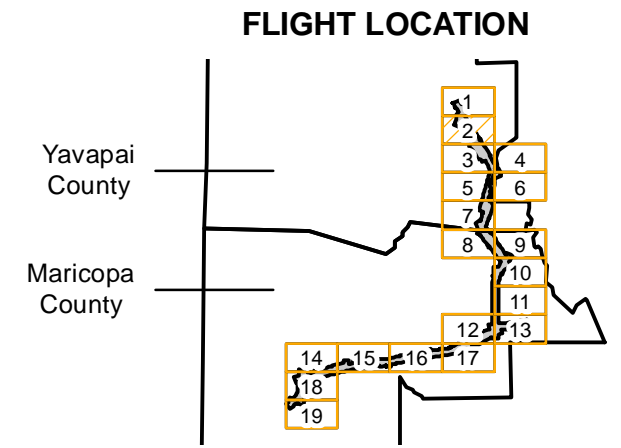
Scale of this index: 1:117,036

C-2920A

Counties: Maricopa, Yavapai (Arizona)
Flight date(s): 02-01-1934 to 02-28-1934
Scale: 1:13,500
Overlap: 60%

Note: Phoenix area: Alhambra to Tempe and Indian School Road to Salt River. Copy negatives acquired from Teledyne, Inc. were made from original nitrate film. Prints and nitrate film acquired from Whittier College, January 2013. Nitrate negatives scanned April 2015.

Complete Metadata:
<https://www.library.ucsb.edu/src/airphotos/aerial-photography-information>



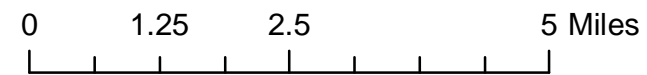
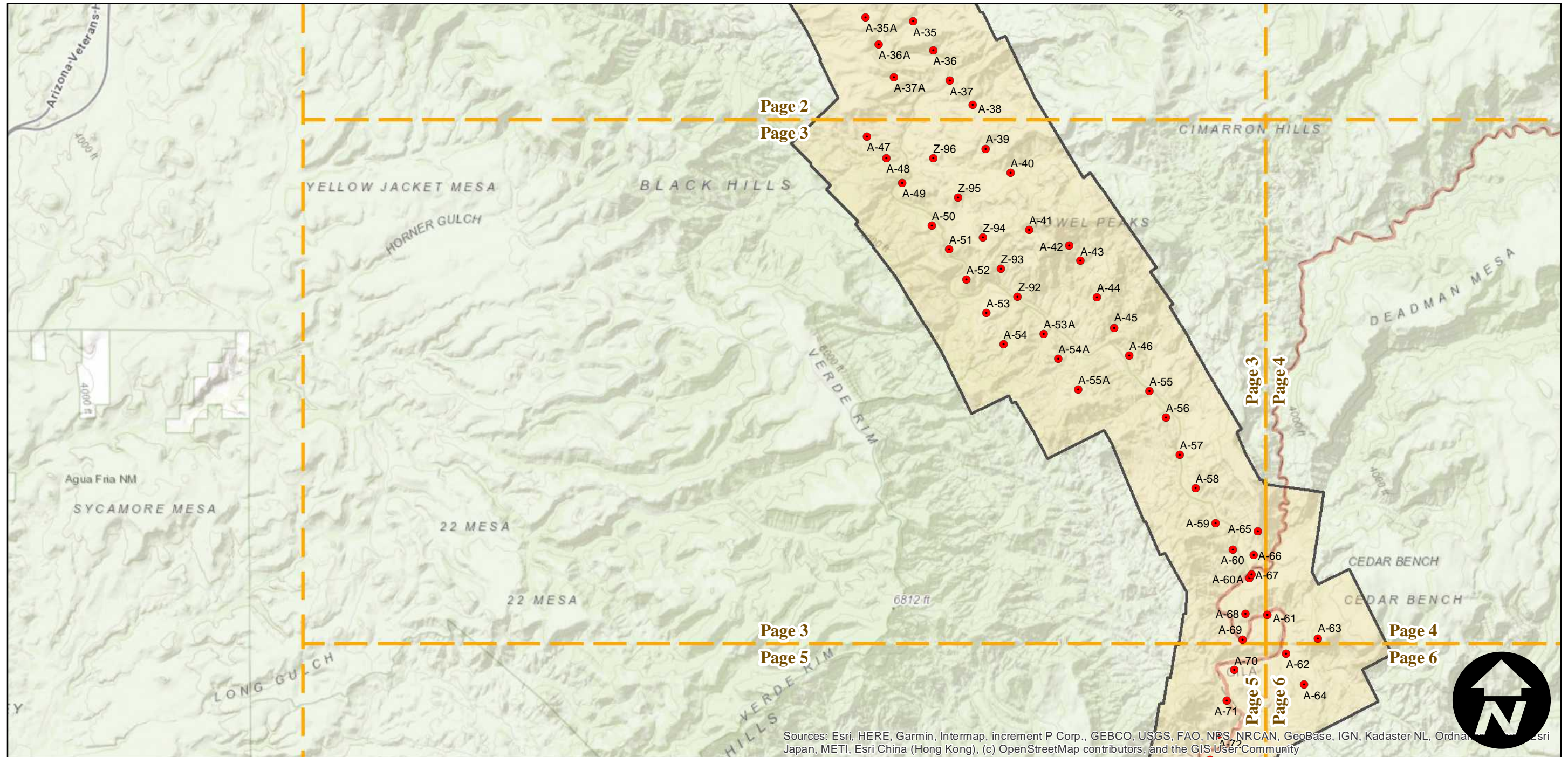
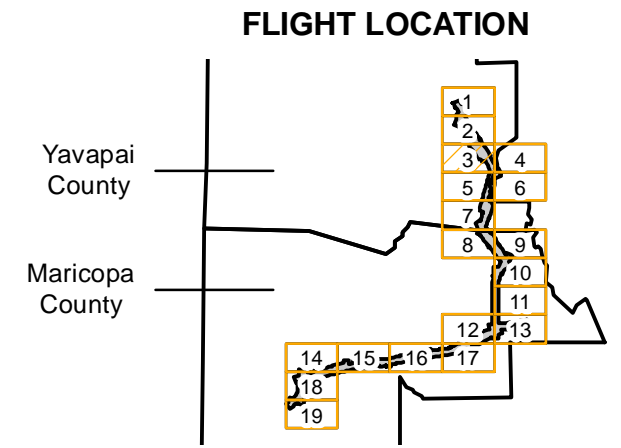
Sources: Esri, HERE, Garmin, Intermap, increment P Corp., GEBCO, USGS, FAO, NPS, NRCAN, GeoBase, IGN, Kadaster NL, Ordnance Survey, Esri Japan, METI, Esri China (Hong Kong), (c) OpenStreetMap contributors, and the GIS User Community

C-2920A

Counties: Maricopa, Yavapai (Arizona)
Flight date(s): 02-01-1934 to 02-28-1934
Scale: 1:13,500
Overlap: 60%

Note: Phoenix area: Alhambra to Tempe and Indian School Road to Salt River. Copy negatives acquired from Teledyne, Inc. were made from original nitrate film. Prints and nitrate film acquired from Whittier College, January 2013. Nitrate negatives scanned April 2015.

Complete Metadata:
<https://www.library.ucsb.edu/src/airphotos/aerial-photography-information>



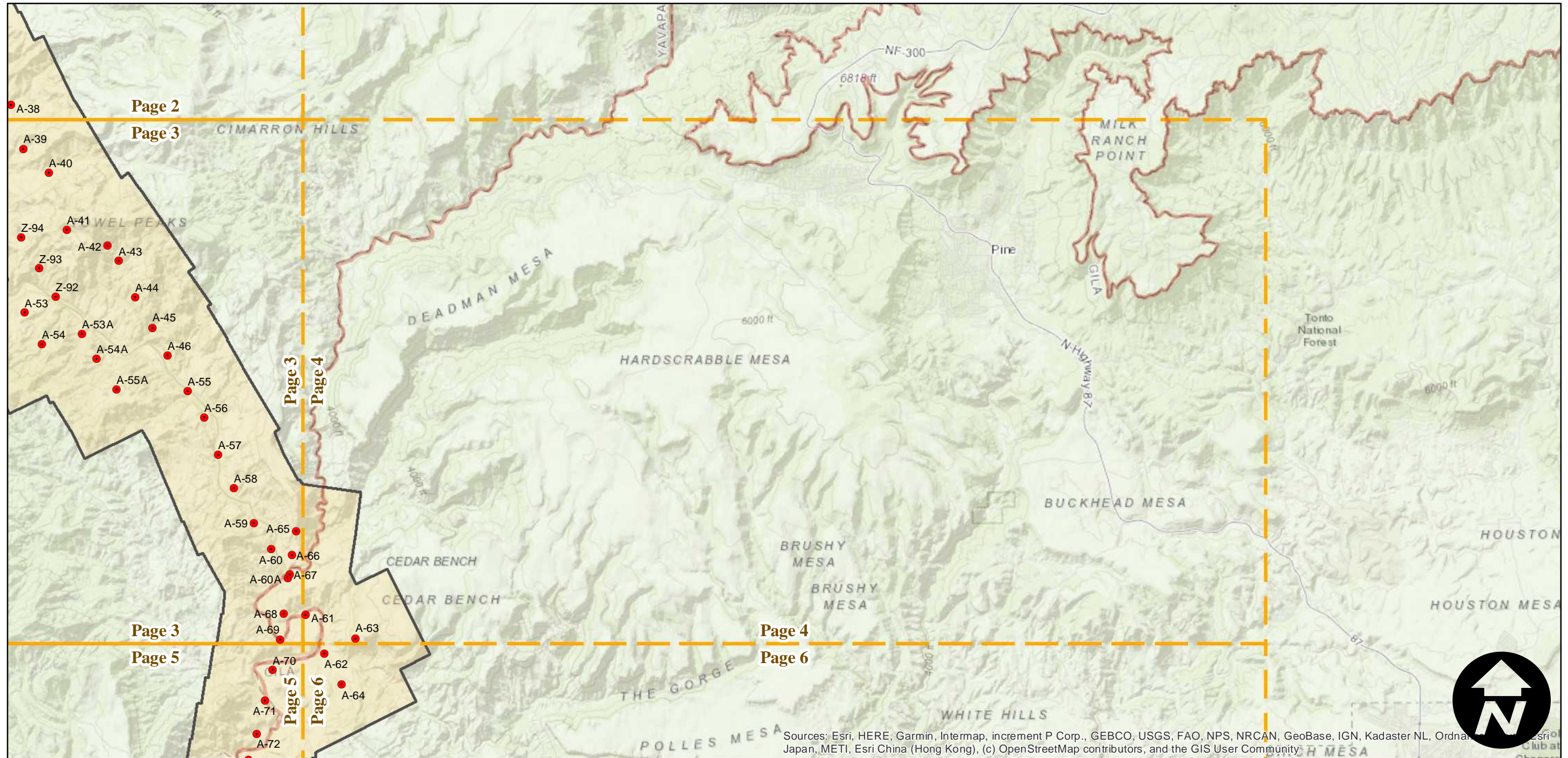
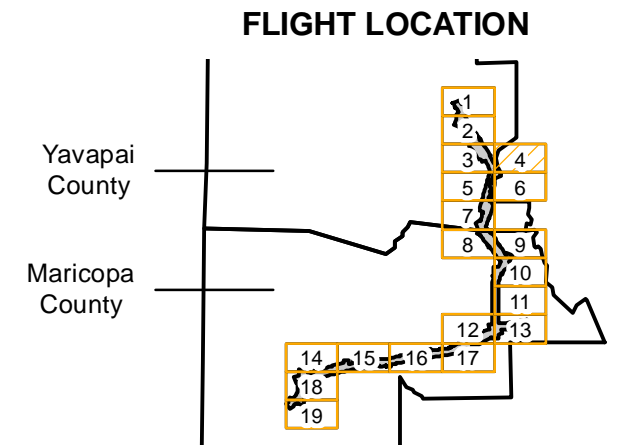
Sources: Esri, HERE, Garmin, Intermap, increment P Corp., GEBCO, USGS, FAO, NPS, NRCAN, GeoBase, IGN, Kadaster NL, Ordnance Survey, Esri Japan, METI, Esri China (Hong Kong), (c) OpenStreetMap contributors, and the GIS User Community

C-2920A

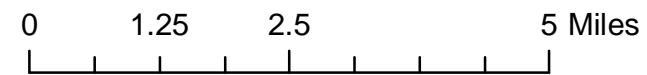
Counties: Maricopa, Yavapai (Arizona)
 Flight date(s): 02-01-1934 to 02-28-1934
 Scale: 1:13,500
 Overlap: 60%

Note: Phoenix area: Alhambra to Tempe and Indian School Road to Salt River. Copy negatives acquired from Teledyne, Inc. were made from original nitrate film. Prints and nitrate film acquired from Whittier College, January 2013. Nitrate negatives scanned April 2015.

Complete Metadata:
<https://www.library.ucsb.edu/src/airphotos/aerial-photography-information>



Sources: Esri, HERE, Garmin, Intermap, increment P Corp., GEBCO, USGS, FAO, NPS, NRCAN, GeoBase, IGN, Kadaster NL, Ordnance Survey, Esri Japan, METI, Esri China (Hong Kong), (c) OpenStreetMap contributors, and the GIS User Community

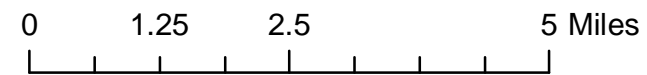
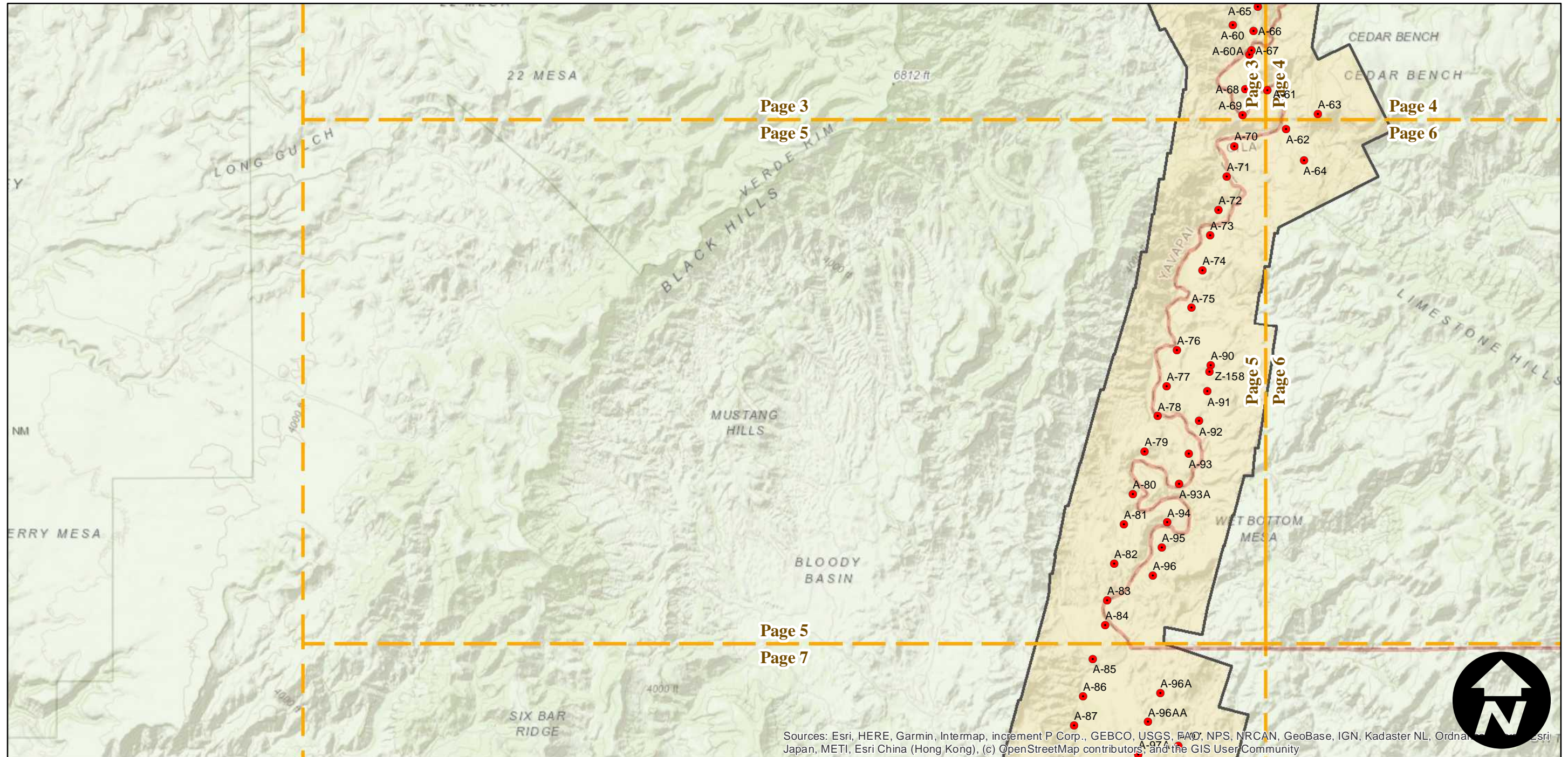
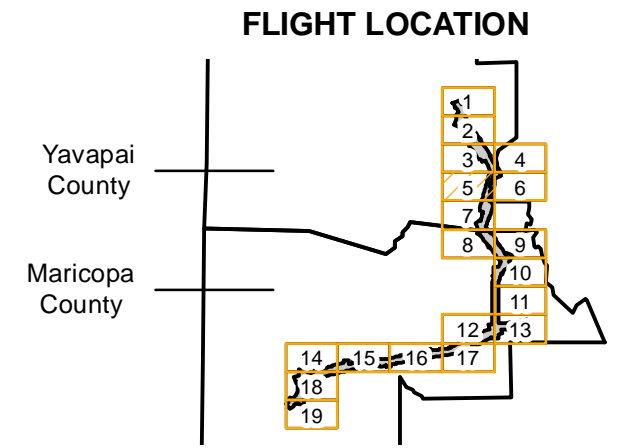


C-2920A

Counties: Maricopa, Yavapai (Arizona)
Flight date(s): 02-01-1934 to 02-28-1934
Scale: 1:13,500
Overlap: 60%

Note: Phoenix area: Alhambra to Tempe and Indian School Road to Salt River. Copy negatives acquired from Teledyne, Inc. were made from original nitrate film. Prints and nitrate film acquired from Whittier College, January 2013. Nitrate negatives scanned April 2015.

Complete Metadata:
<https://www.library.ucsb.edu/src/airphotos/aerial-photography-information>



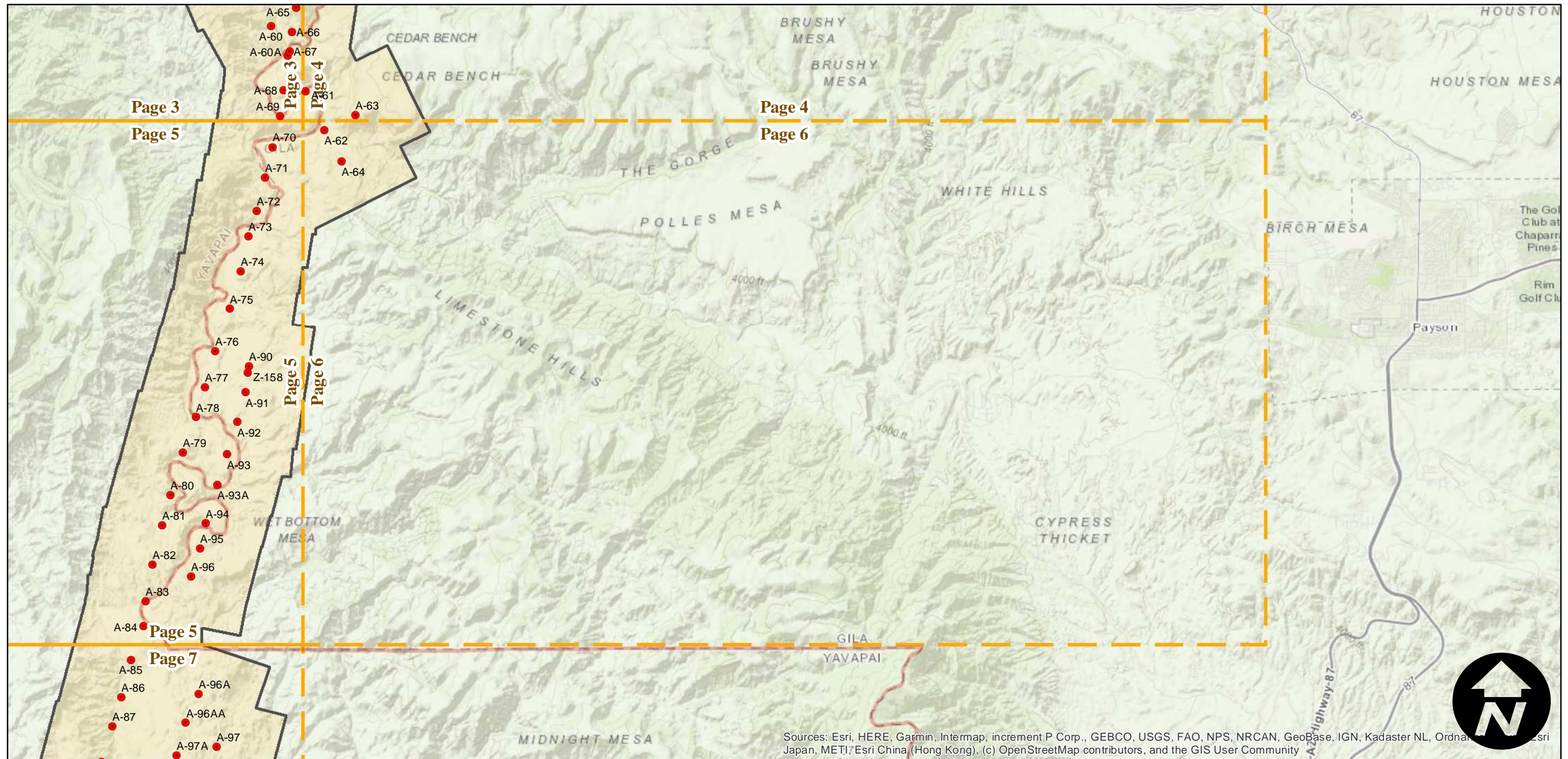
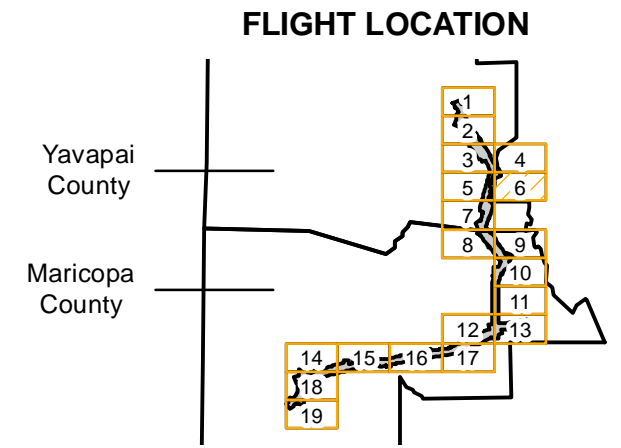
Sources: Esri, HERE, Garmin, Intermap, increment P Corp., GEBCO, USGS, FAO, NPS, NRCAN, GeoBase, IGN, Kadaster NL, Ordnance Survey, Esri Japan, METI, Esri China (Hong Kong), (c) OpenStreetMap contributors, and the GIS User Community

C-2920A

Counties: Maricopa, Yavapai (Arizona)
 Flight date(s): 02-01-1934 to 02-28-1934
 Scale: 1:13,500
 Overlap: 60%

Note: Phoenix area: Alhambra to Tempe and Indian School Road to Salt River. Copy negatives acquired from Teledyne, Inc. were made from original nitrate film. Prints and nitrate film acquired from Whittier College, January 2013. Nitrate negatives scanned April 2015.

Complete Metadata:
<https://www.library.ucsb.edu/src/airphotos/aerial-photography-information>



Sources: Esri, HERE, Garmin, Intermap, increment P Corp., GEBCO, USGS, FAO, NPS, NRCAN, GeoBase, IGN, Kadaster NL, Ordnance Survey, Esri Japan, METI, Esri China (Hong Kong), (c) OpenStreetMap contributors, and the GIS User Community

0 1.25 2.5 5 Miles

Index to Aerial Photography
 Page 6 of 19

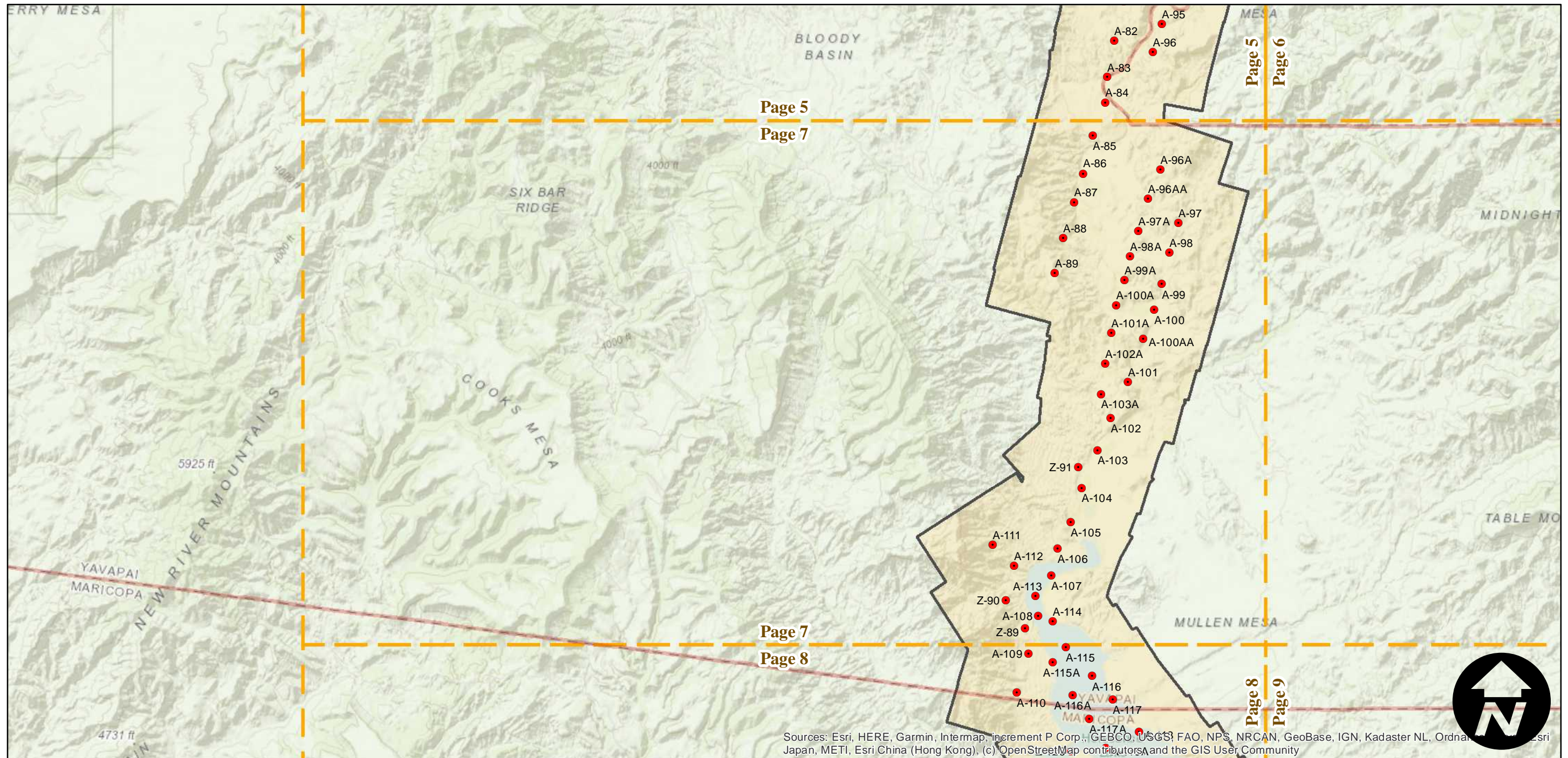
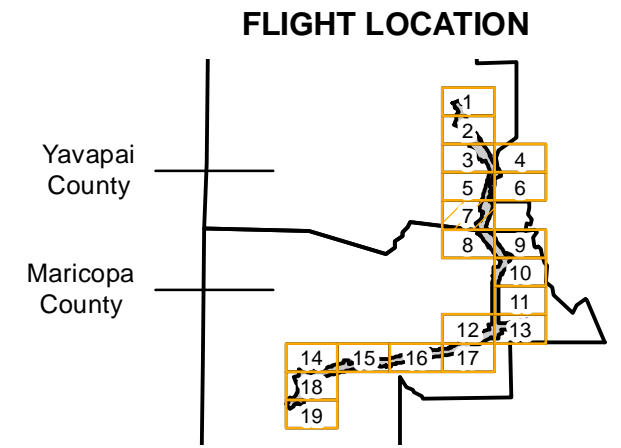
Scale of this index: 1:117,036

C-2920A

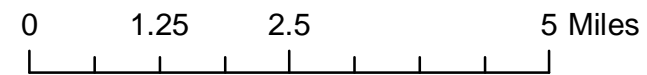
Counties: Maricopa, Yavapai (Arizona)
 Flight date(s): 02-01-1934 to 02-28-1934
 Scale: 1:13,500
 Overlap: 60%

Note: Phoenix area: Alhambra to Tempe and Indian School Road to Salt River. Copy negatives acquired from Teledyne, Inc. were made from original nitrate film. Prints and nitrate film acquired from Whittier College, January 2013. Nitrate negatives scanned April 2015.

Complete Metadata:
<https://www.library.ucsb.edu/src/airphotos/aerial-photography-information>



Sources: Esri, HERE, Garmin, Intermap, increment P Corp., GEBCO, USGS, FAO, NPS, NRCAN, GeoBase, IGN, Kadaster NL, Ordnance Survey, Esri Japan, METI, Esri China (Hong Kong), (c) OpenStreetMap contributors, and the GIS User Community

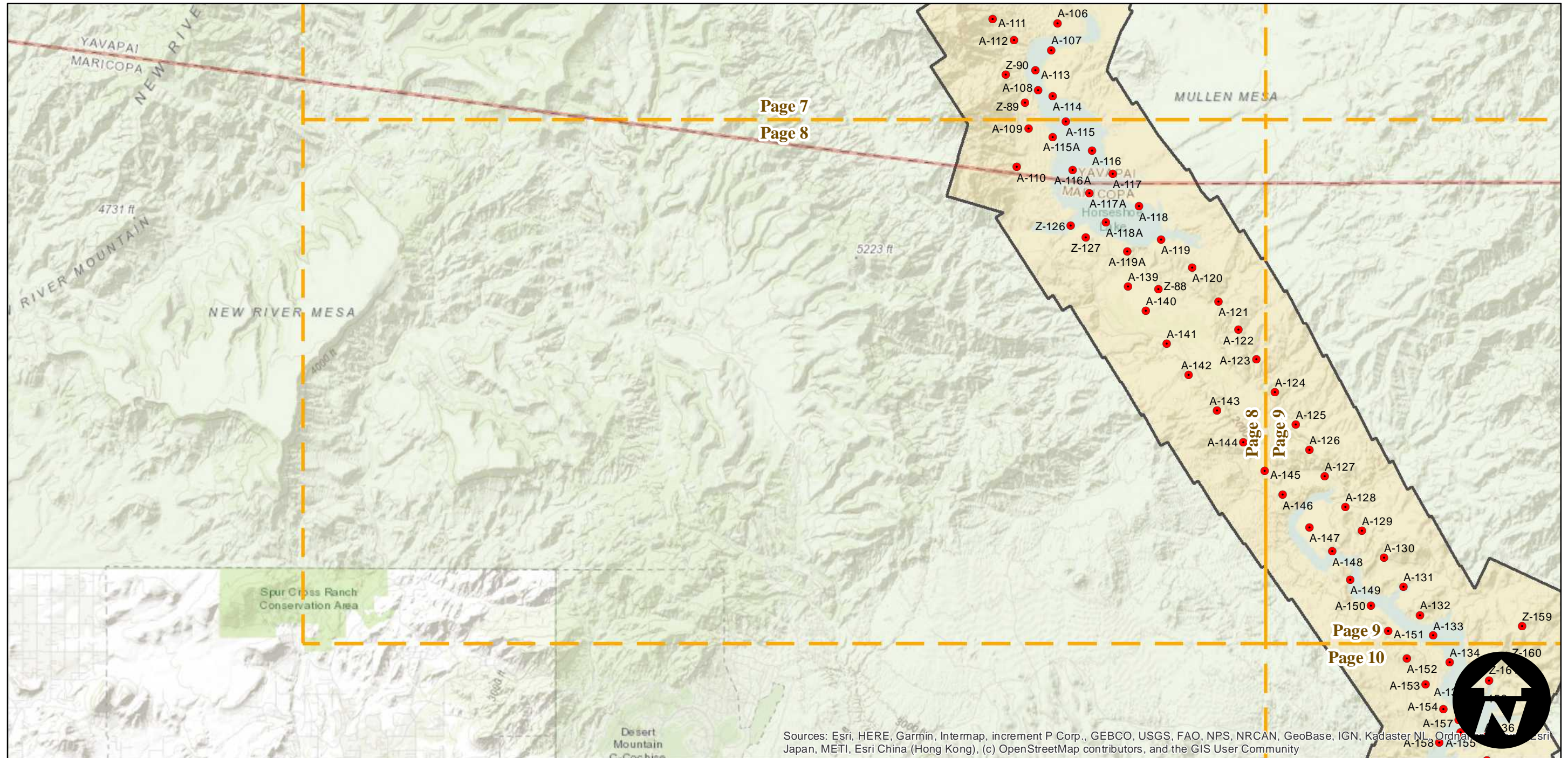
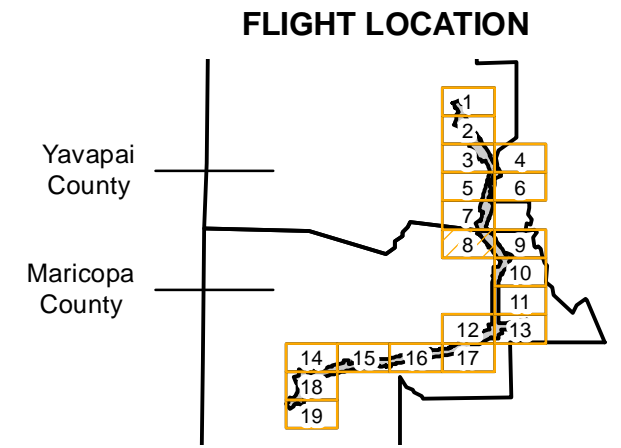


C-2920A

Counties: Maricopa, Yavapai (Arizona)
Flight date(s): 02-01-1934 to 02-28-1934
Scale: 1:13,500
Overlap: 60%

Complete Metadata:
<https://www.library.ucsb.edu/src/airphotos/aerial-photography-information>

Note: Phoenix area: Alhambra to Tempe and Indian School Road to Salt River. Copy negatives acquired from Teledyne, Inc. were made from original nitrate film. Prints and nitrate film acquired from Whittier College, January 2013. Nitrate negatives scanned April 2015.



Sources: Esri, HERE, Garmin, Intermap, increment P Corp., GEBCO, USGS, FAO, NPS, NRCAN, GeoBase, IGN, Kadaster NL, Ordnance Survey, Esri Japan, METI, Esri China (Hong Kong), (c) OpenStreetMap contributors, and the GIS User Community

0 1.25 2.5 5 Miles

Index to Aerial Photography
Page 8 of 19

Scale of this index: 1:117,036

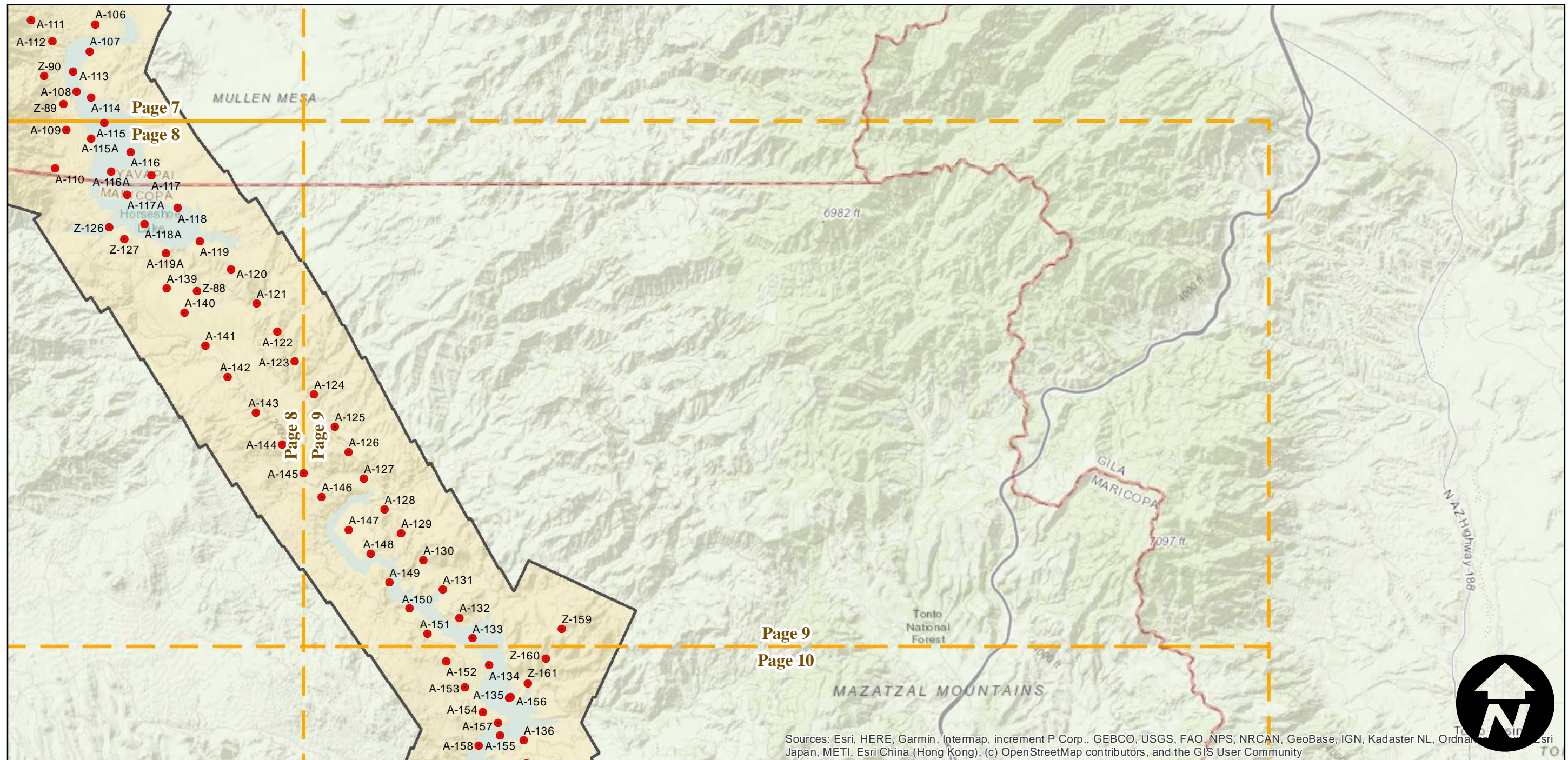
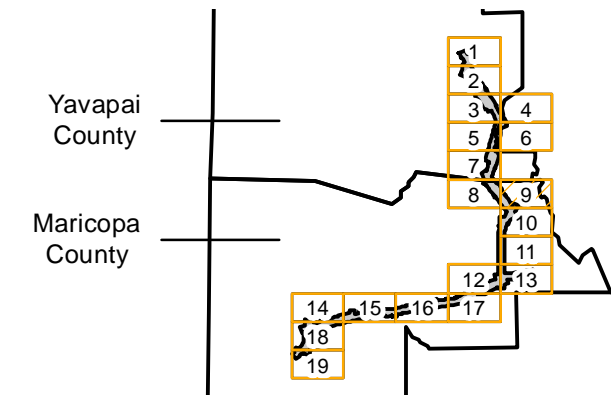
C-2920A

Counties: Maricopa, Yavapai (Arizona)
Flight date(s): 02-01-1934 to 02-28-1934
Scale: 1:13,500
Overlap: 60%

Note: Phoenix area: Alhambra to Tempe and Indian School Road to Salt River. Copy negatives acquired from Teledyne, Inc. were made from original nitrate film. Prints and nitrate film acquired from Whittier College, January 2013. Nitrate negatives scanned April 2015.

Complete Metadata:
<https://www.library.ucsb.edu/src/airphotos/aerial-photography-information>

FLIGHT LOCATION



Sources: Esri, HERE, Garmin, Intermap, increment P Corp., GEBCO, USGS, FAO, NPS, NRCAN, GeoBase, IGN, Kadaster NL, Ordnance Survey, Esri Japan, METI, Esri China (Hong Kong), (c) OpenStreetMap contributors, and the GIS User Community

0 1.25 2.5 5 Miles

Index to Aerial Photography
Page 9 of 19

Scale of this index: 1:117,036

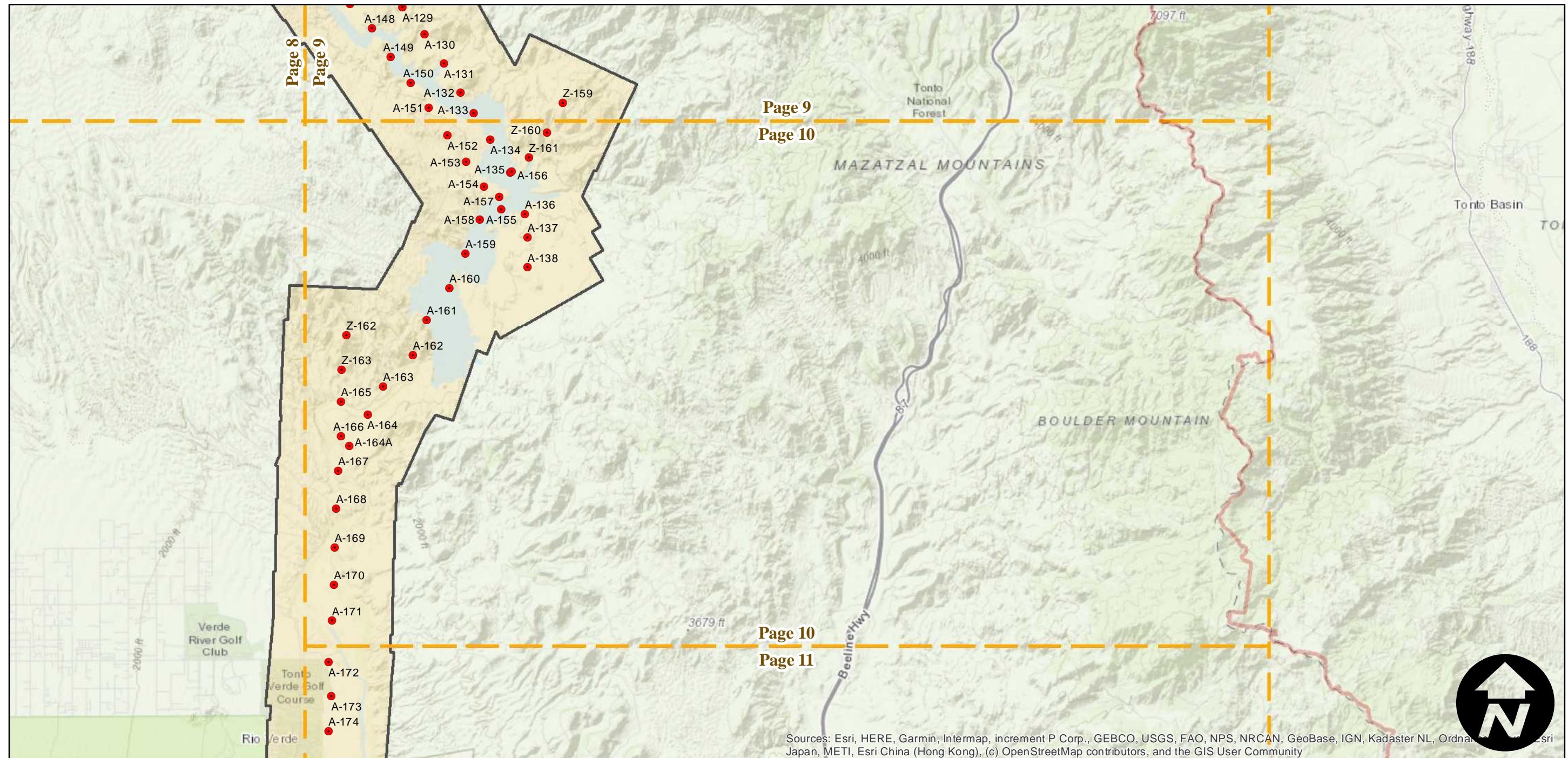
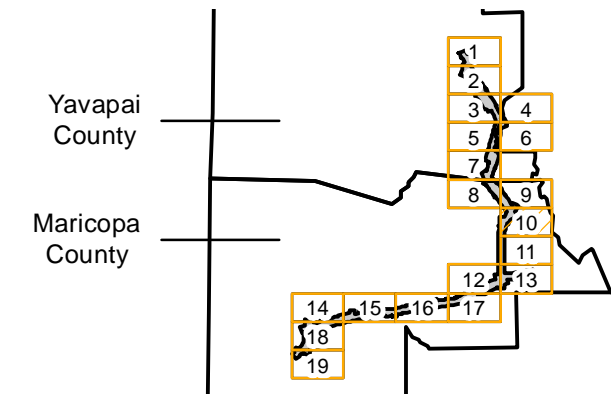
C-2920A

Counties: Maricopa, Yavapai (Arizona)
Flight date(s): 02-01-1934 to 02-28-1934
Scale: 1:13,500
Overlap: 60%

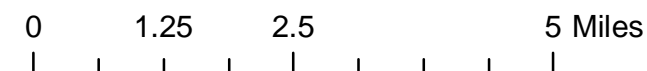
Note: Phoenix area: Alhambra to Tempe and Indian School Road to Salt River. Copy negatives acquired from Teledyne, Inc. were made from original nitrate film. Prints and nitrate film acquired from Whittier College, January 2013. Nitrate negatives scanned April 2015.

Complete Metadata:
<https://www.library.ucsb.edu/src/airphotos/aerial-photography-information>

FLIGHT LOCATION



Sources: Esri, HERE, Garmin, Intermap, increment P Corp., GEBCO, USGS, FAO, NPS, NRCAN, GeoBase, IGN, Kadaster NL, Ordnance Survey, Esri Japan, METI, Esri China (Hong Kong), (c) OpenStreetMap contributors, and the GIS User Community

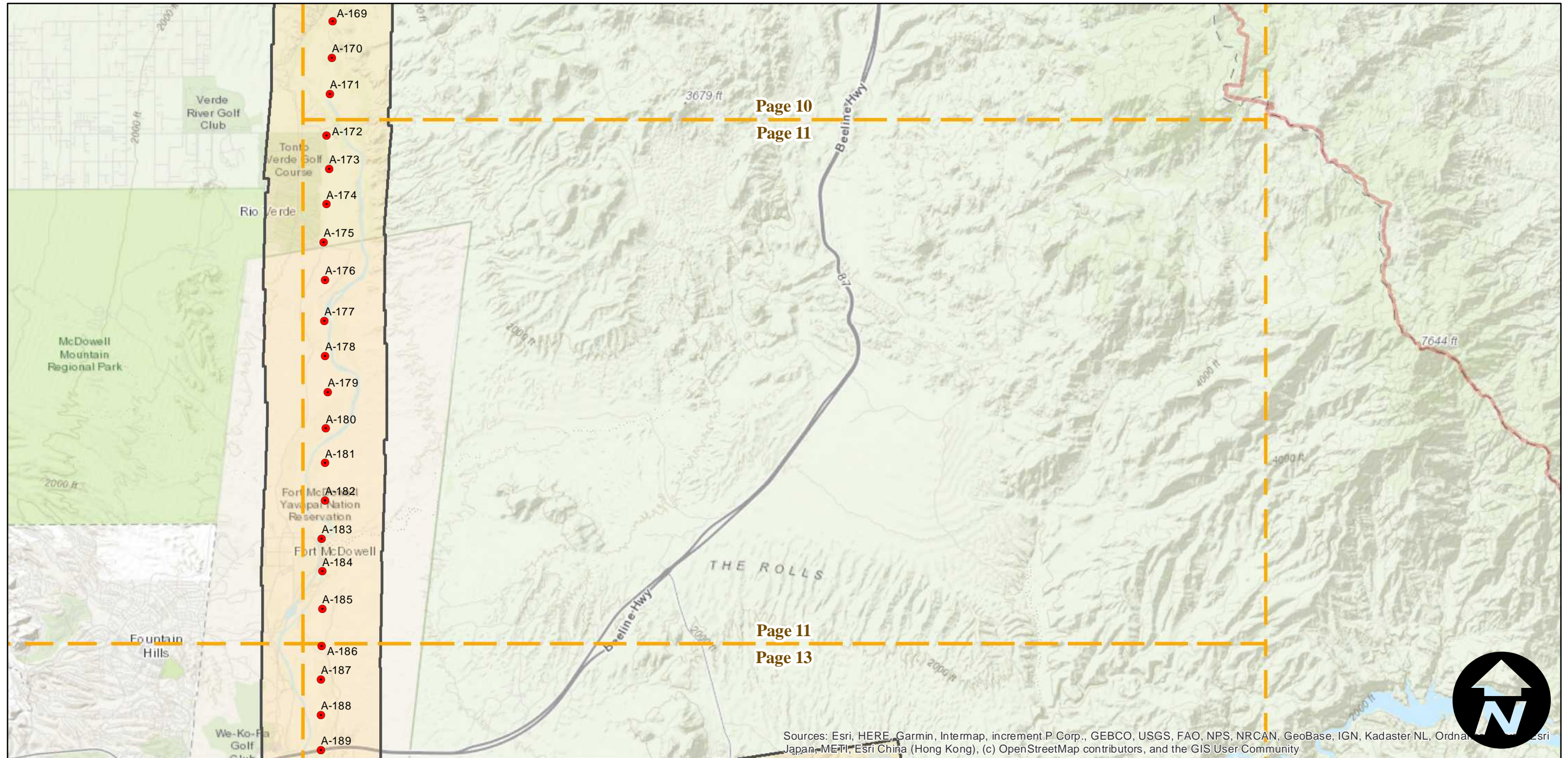
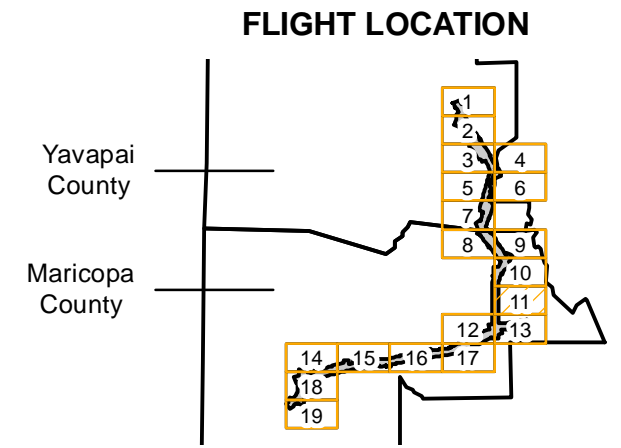


C-2920A

Counties: Maricopa, Yavapai (Arizona)
Flight date(s): 02-01-1934 to 02-28-1934
Scale: 1:13,500
Overlap: 60%

Note: Phoenix area: Alhambra to Tempe and Indian School Road to Salt River. Copy negatives acquired from Teledyne, Inc. were made from original nitrate film. Prints and nitrate film acquired from Whittier College, January 2013. Nitrate negatives scanned April 2015.

Complete Metadata:
<https://www.library.ucsb.edu/src/airphotos/aerial-photography-information>



Sources: Esri, HERE, Garmin, Intermap, increment P Corp., GEBCO, USGS, FAO, NPS, NRCAN, GeoBase, IGN, Kadaster NL, Ordnance Survey, Esri Japan, METI, Esri China (Hong Kong), (c) OpenStreetMap contributors, and the GIS User Community

0 1.25 2.5 5 Miles

Index to Aerial Photography
Page 11 of 19

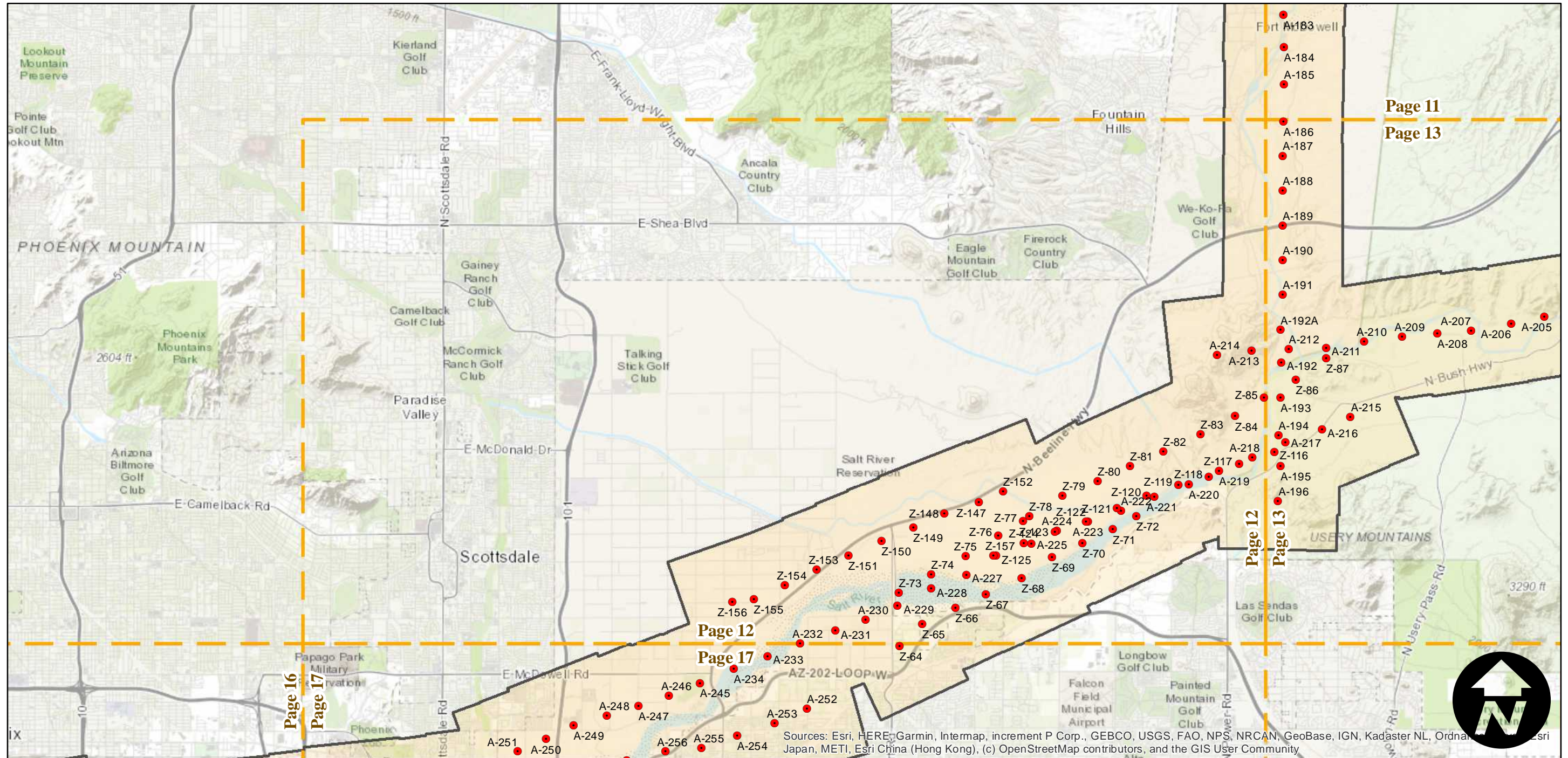
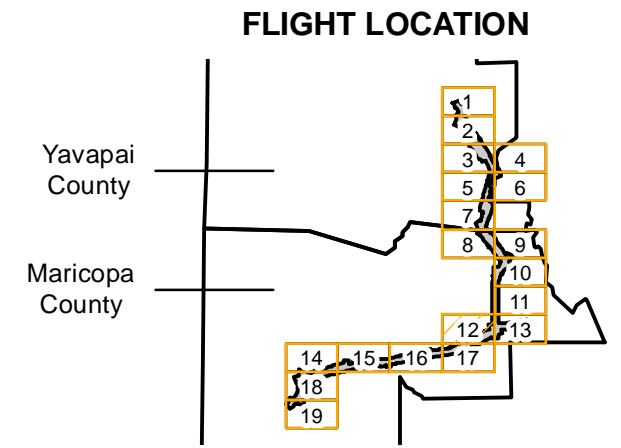
Scale of this index: 1:117,036

C-2920A

Counties: Maricopa, Yavapai (Arizona)
 Flight date(s): 02-01-1934 to 02-28-1934
 Scale: 1:13,500
 Overlap: 60%

Note: Phoenix area: Alhambra to Tempe and Indian School Road to Salt River. Copy negatives acquired from Teledyne, Inc. were made from original nitrate film. Prints and nitrate film acquired from Whittier College, January 2013. Nitrate negatives scanned April 2015.

Complete Metadata:
<https://www.library.ucsb.edu/src/airphotos/aerial-photography-information>



0 1.25 2.5 5 Miles

Index to Aerial Photography
 Page 12 of 19

Scale of this index: 1:117,036

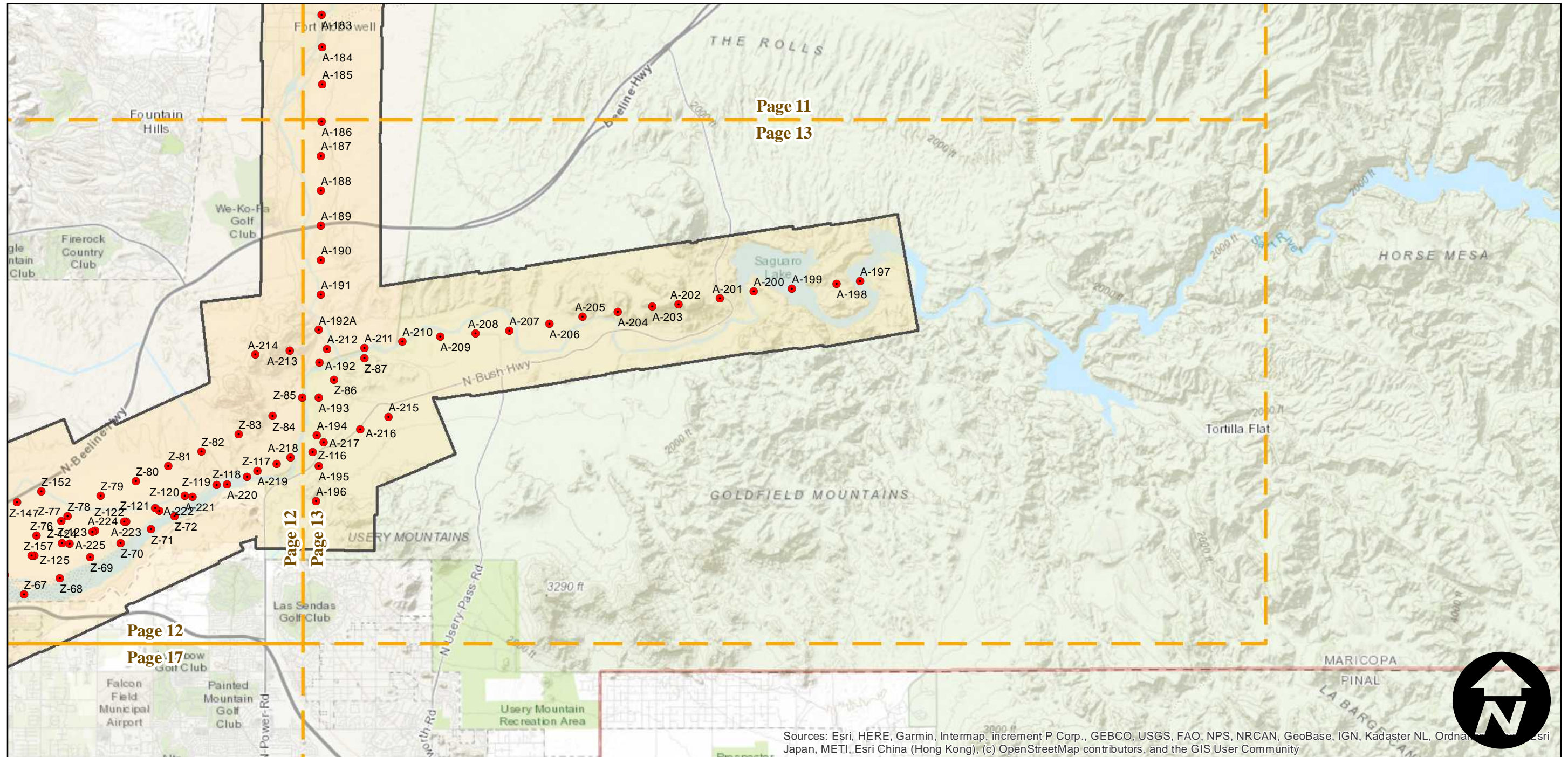
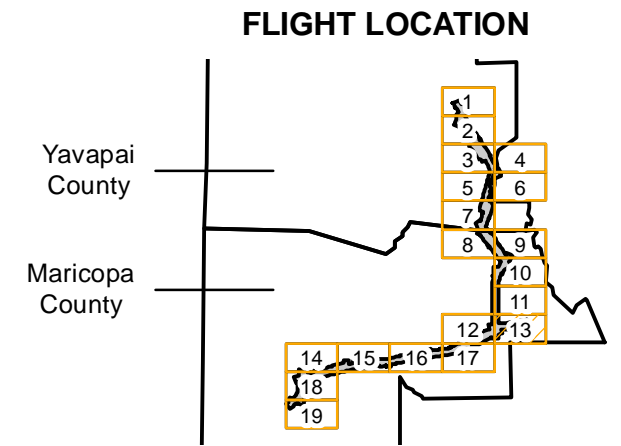
Sources: Esri, HERE, Garmin, Intermap, increment P Corp., GEBCO, USGS, FAO, NPS, NRCAN, GeoBase, IGN, Kadaster NL, Ordnance Survey, Esri Japan, METI, Esri China (Hong Kong), (c) OpenStreetMap contributors, and the GIS User Community

C-2920A

Counties: Maricopa, Yavapai (Arizona)
 Flight date(s): 02-01-1934 to 02-28-1934
 Scale: 1:13,500
 Overlap: 60%

Note: Phoenix area: Alhambra to Tempe and Indian School Road to Salt River. Copy negatives acquired from Teledyne, Inc. were made from original nitrate film. Prints and nitrate film acquired from Whittier College, January 2013. Nitrate negatives scanned April 2015.

Complete Metadata:
<https://www.library.ucsb.edu/src/airphotos/aerial-photography-information>



Sources: Esri, HERE, Garmin, Intermap, increment P Corp., GEBCO, USGS, FAO, NPS, NRCAN, GeoBase, IGN, Kadaster NL, Ordnance Survey, Esri Japan, METI, Esri China (Hong Kong), (c) OpenStreetMap contributors, and the GIS User Community

0 1.25 2.5 5 Miles

Index to Aerial Photography
 Page 13 of 19

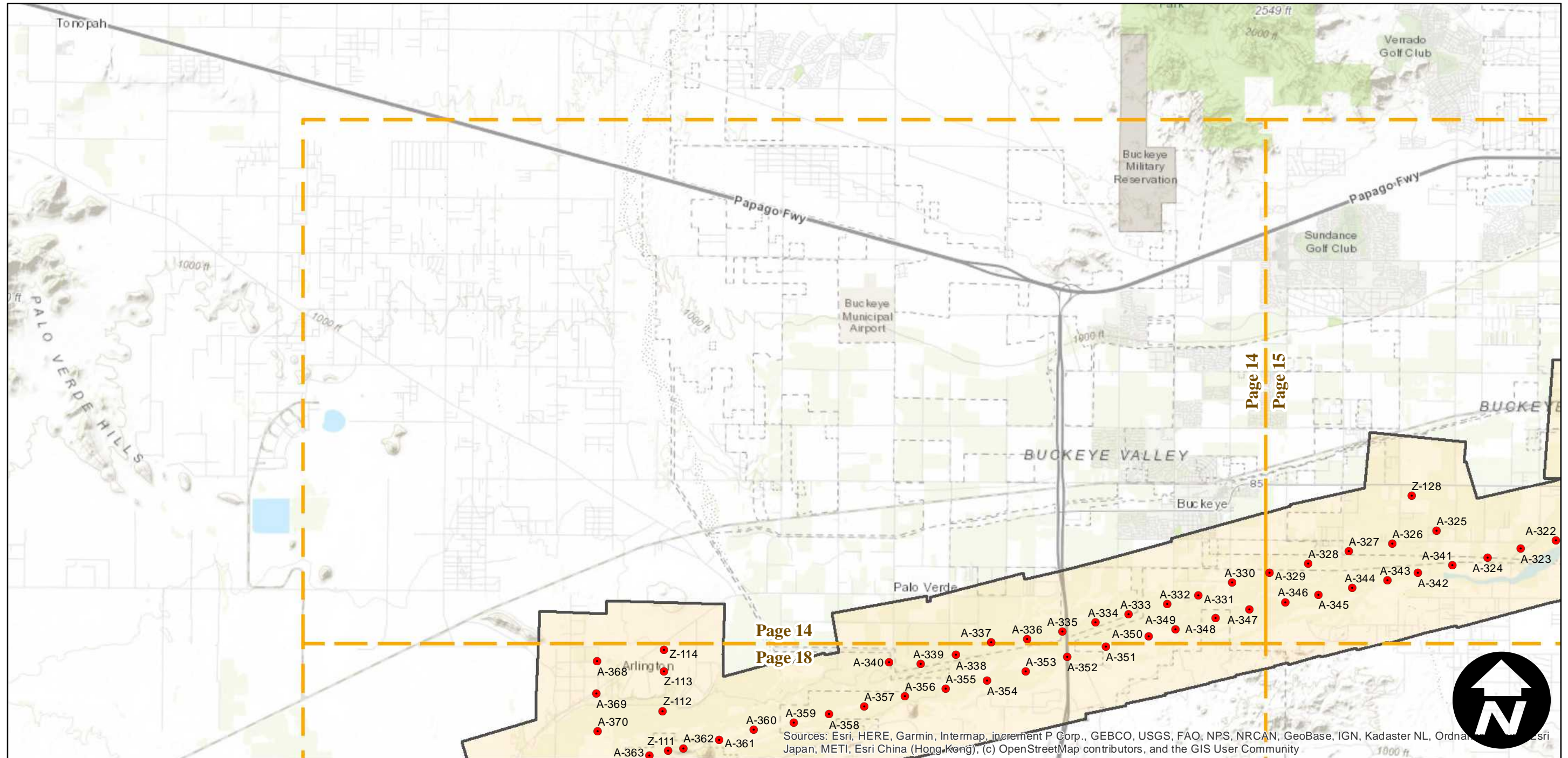
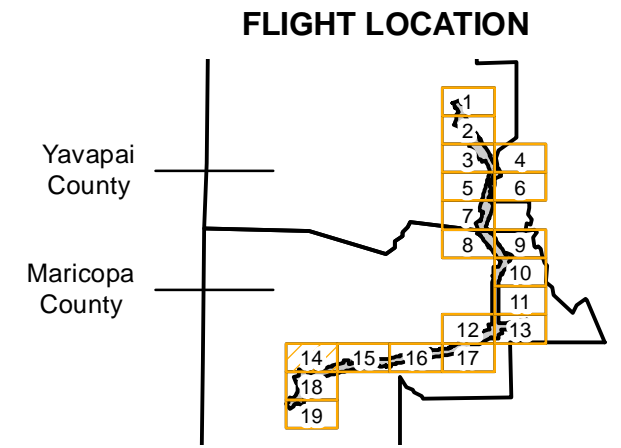
Scale of this index: 1:117,036

C-2920A

Counties: Maricopa, Yavapai (Arizona)
Flight date(s): 02-01-1934 to 02-28-1934
Scale: 1:13,500
Overlap: 60%

Note: Phoenix area: Alhambra to Tempe and Indian School Road to Salt River. Copy negatives acquired from Teledyne, Inc. were made from original nitrate film. Prints and nitrate film acquired from Whittier College, January 2013. Nitrate negatives scanned April 2015.

Complete Metadata:
<https://www.library.ucsb.edu/src/airphotos/aerial-photography-information>



0 1.25 2.5 5 Miles

Index to Aerial Photography
Page 14 of 19

Scale of this index: 1:117,036

Sources: Esri, HERE, Garmin, Intermap, increment P Corp., GEBCO, USGS, FAO, NPS, NRCAN, GeoBase, IGN, Kadaster NL, Ordnance Survey, Esri Japan, METI, Esri China (Hong Kong), (c) OpenStreetMap contributors, and the GIS User Community

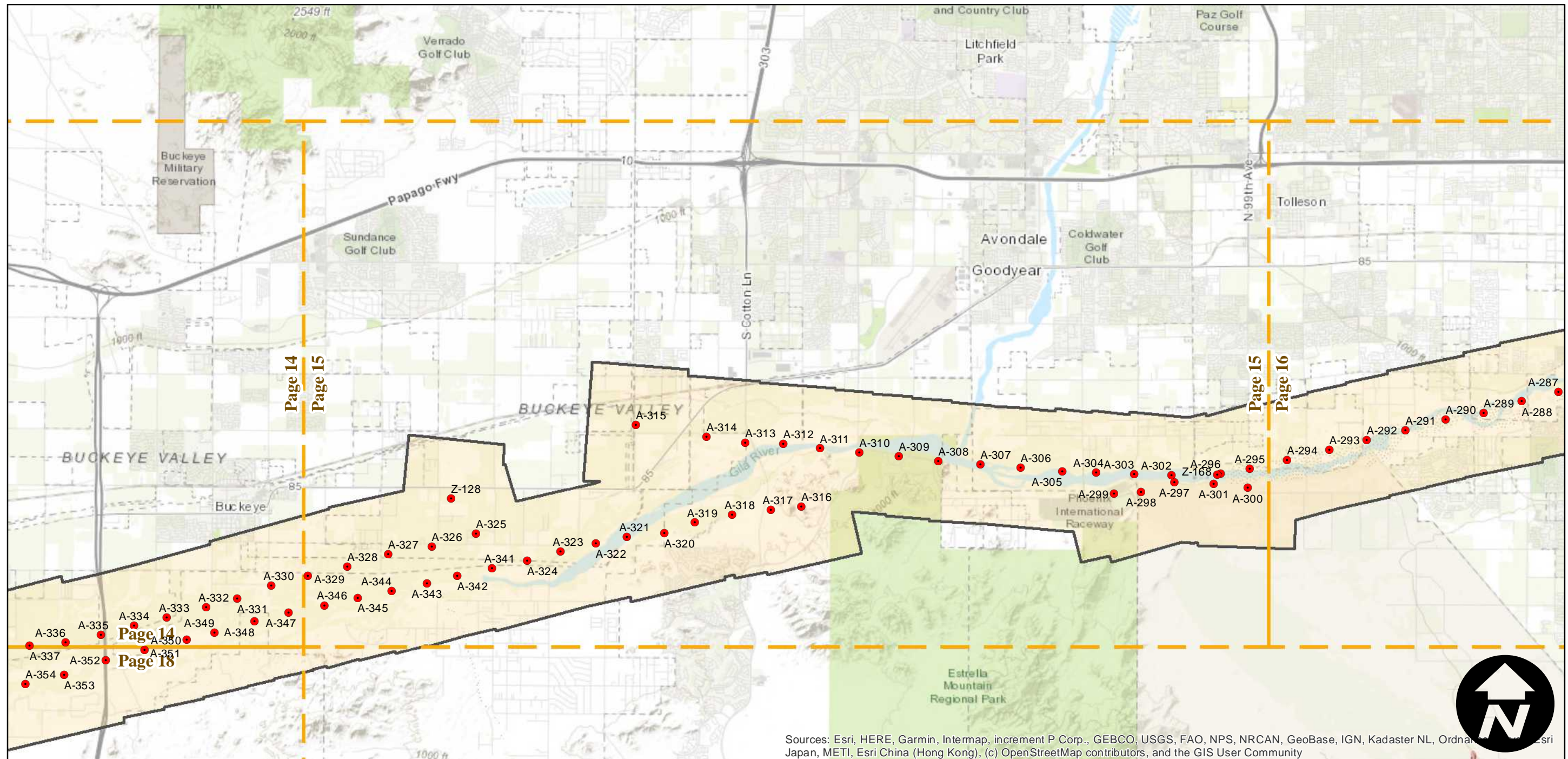
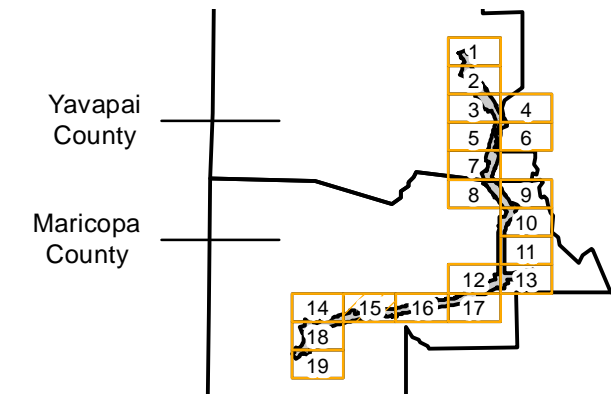
C-2920A

Counties: Maricopa, Yavapai (Arizona)
Flight date(s): 02-01-1934 to 02-28-1934
Scale: 1:13,500
Overlap: 60%

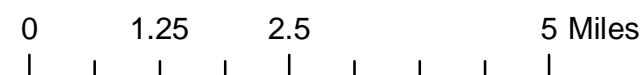
Note: Phoenix area: Alhambra to Tempe and Indian School Road to Salt River. Copy negatives acquired from Teledyne, Inc. were made from original nitrate film. Prints and nitrate film acquired from Whittier College, January 2013. Nitrate negatives scanned April 2015.

Complete Metadata:
<https://www.library.ucsb.edu/src/airphotos/aerial-photography-information>

FLIGHT LOCATION



Sources: Esri, HERE, Garmin, Intermap, increment P Corp., GEBCO, USGS, FAO, NPS, NRCAN, GeoBase, IGN, Kadaster NL, Ordnance Survey, Esri Japan, METI, Esri China (Hong Kong), (c) OpenStreetMap contributors, and the GIS User Community

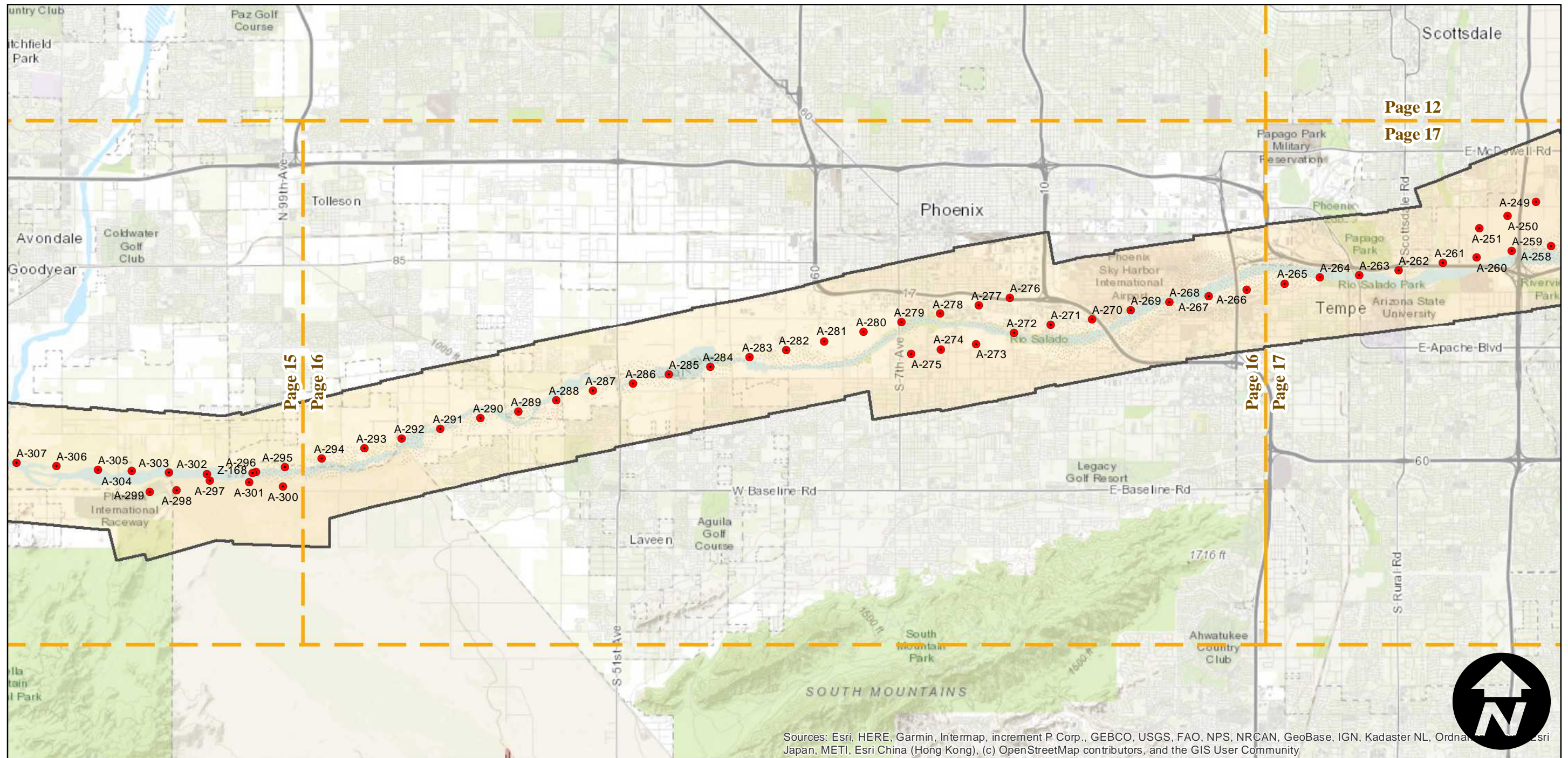
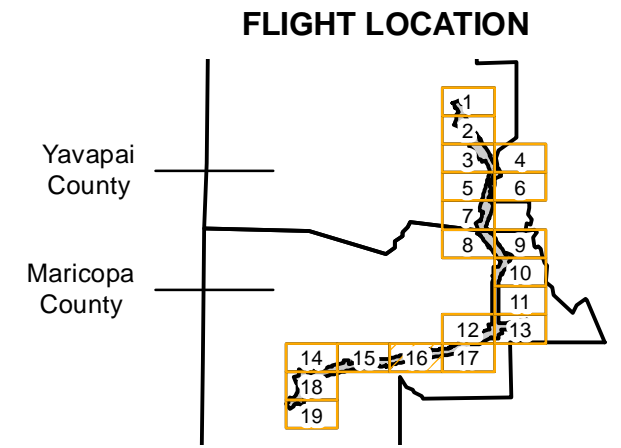


C-2920A

Counties: Maricopa, Yavapai (Arizona)
 Flight date(s): 02-01-1934 to 02-28-1934
 Scale: 1:13,500
 Overlap: 60%

Note: Phoenix area: Alhambra to Tempe and Indian School Road to Salt River. Copy negatives acquired from Teledyne, Inc. were made from original nitrate film. Prints and nitrate film acquired from Whittier College, January 2013. Nitrate negatives scanned April 2015.

Complete Metadata:
<https://www.library.ucsb.edu/src/airphotos/aerial-photography-information>



Sources: Esri, HERE, Garmin, Intermap, increment P Corp., GEBCO, USGS, FAO, NPS, NRCAN, GeoBase, IGN, Kadaster NL, Ordnance Survey, Esri Japan, METI, Esri China (Hong Kong), (c) OpenStreetMap contributors, and the GIS User Community

0 1.25 2.5 5 Miles

Index to Aerial Photography
 Page 16 of 19

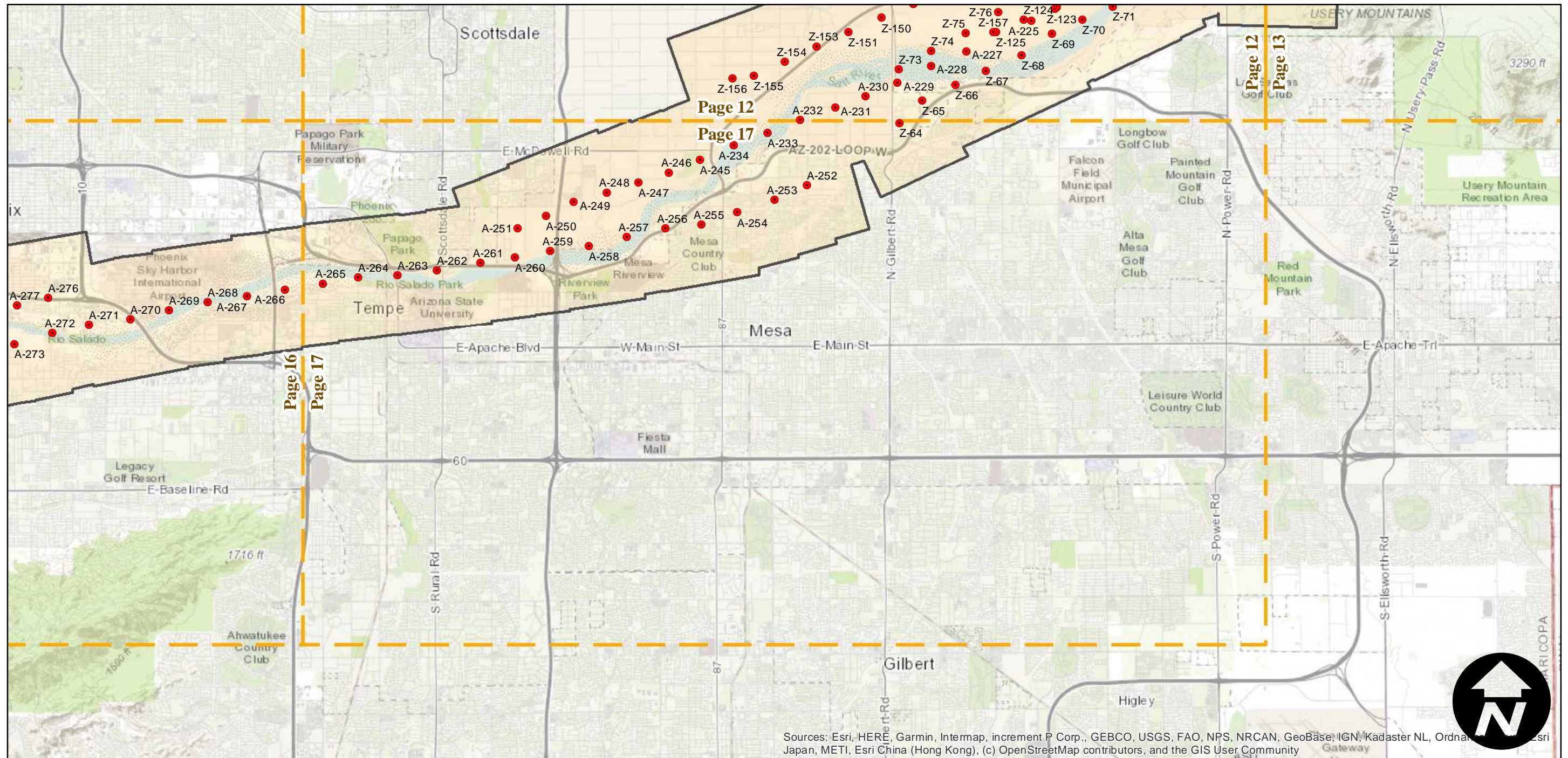
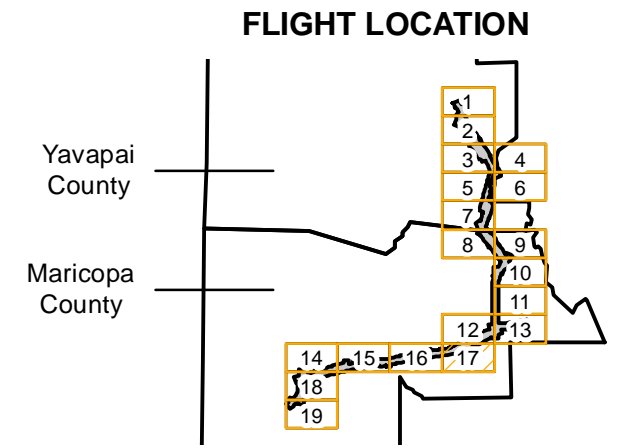
Scale of this index: 1:117,036

C-2920A

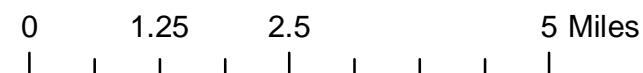
Counties: Maricopa, Yavapai (Arizona)
 Flight date(s): 02-01-1934 to 02-28-1934
 Scale: 1:13,500
 Overlap: 60%

Note: Phoenix area: Alhambra to Tempe and Indian School Road to Salt River. Copy negatives acquired from Teledyne, Inc. were made from original nitrate film. Prints and nitrate film acquired from Whittier College, January 2013. Nitrate negatives scanned April 2015.

Complete Metadata:
<https://www.library.ucsb.edu/src/airphotos/aerial-photography-information>



Sources: Esri, HERE, Garmin, Intermap, increment P Corp., GEBCO, USGS, FAO, NPS, NRCAN, GeoBase, IGN, Kadaster NL, Ordnance Survey, Esri Japan, METI, Esri China (Hong Kong), (c) OpenStreetMap contributors, and the GIS User Community

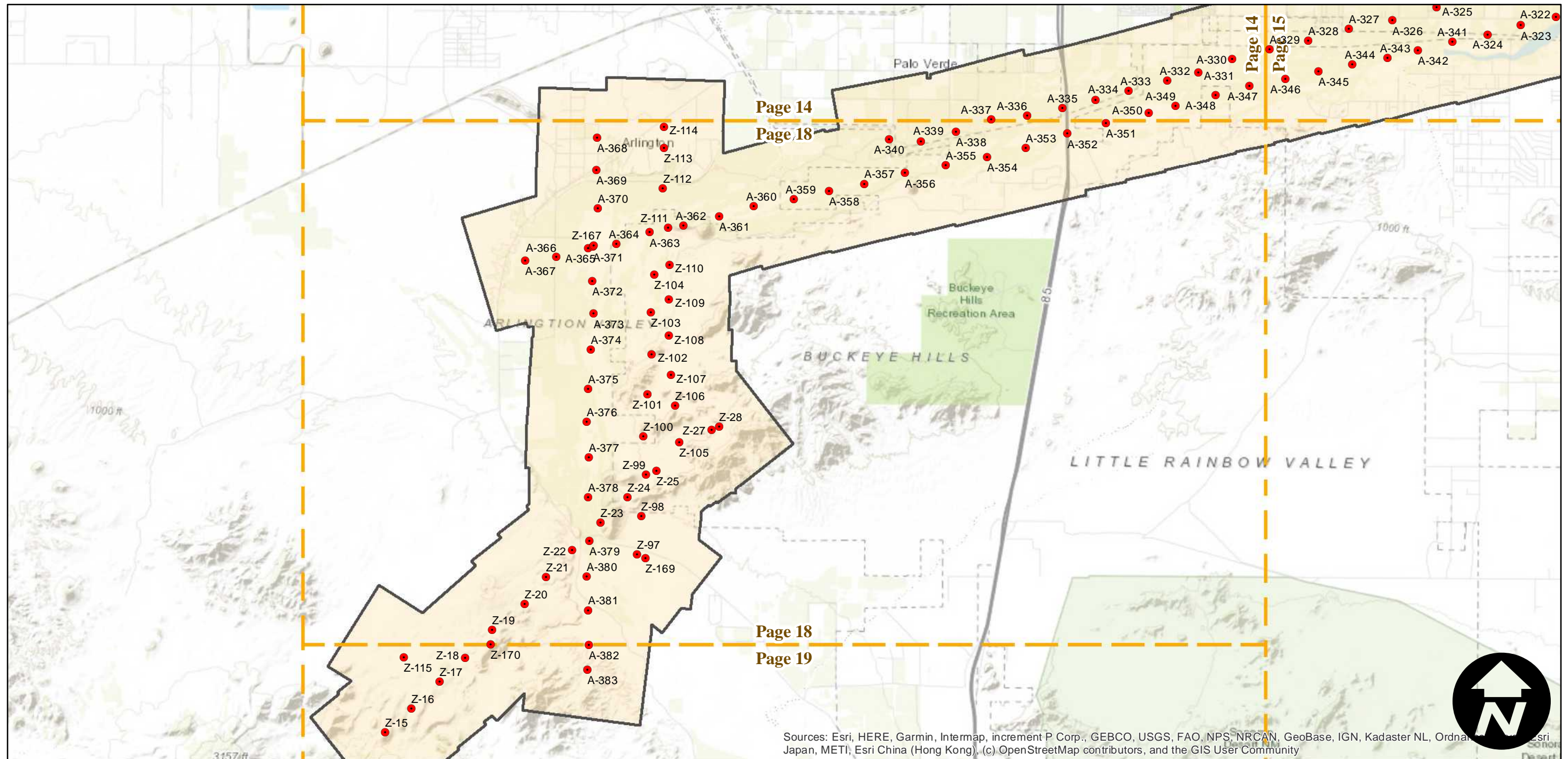
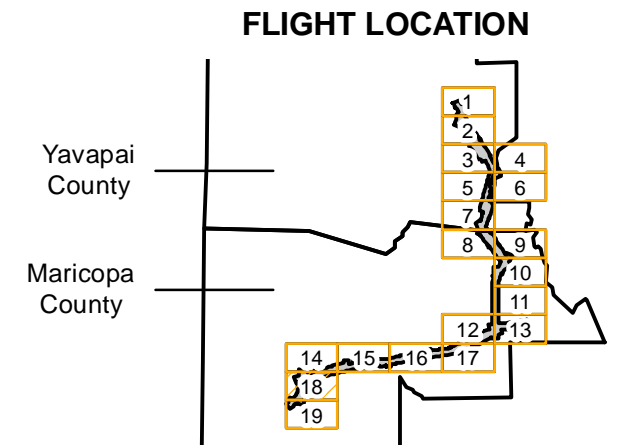


C-2920A

Counties: Maricopa, Yavapai (Arizona)
Flight date(s): 02-01-1934 to 02-28-1934
Scale: 1:13,500
Overlap: 60%

Complete Metadata:
<https://www.library.ucsb.edu/src/airphotos/aerial-photography-information>

Note: Phoenix area: Alhambra to Tempe and Indian School Road to Salt River. Copy negatives acquired from Teledyne, Inc. were made from original nitrate film. Prints and nitrate film acquired from Whittier College, January 2013. Nitrate negatives scanned April 2015.



Sources: Esri, HERE, Garmin, Intermap, increment P Corp., GEBCO, USGS, FAO, NPS, NRCAN, GeoBase, IGN, Kadaster NL, Ordnance Survey, Esri Japan, METI, Esri China (Hong Kong), (c) OpenStreetMap contributors, and the GIS User Community

0 1.25 2.5 5 Miles

Index to Aerial Photography
Page 18 of 19

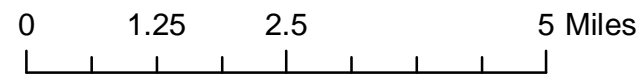
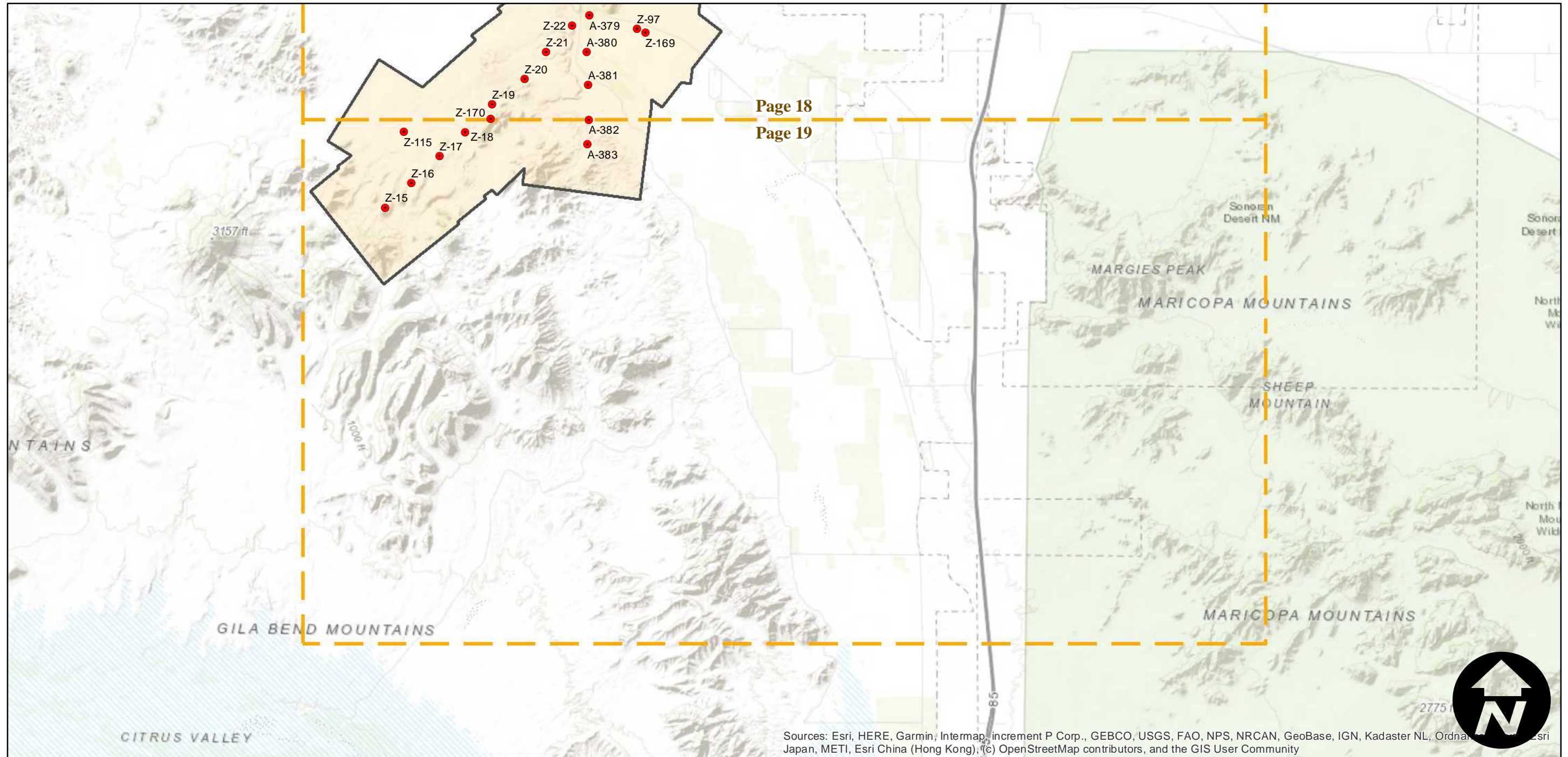
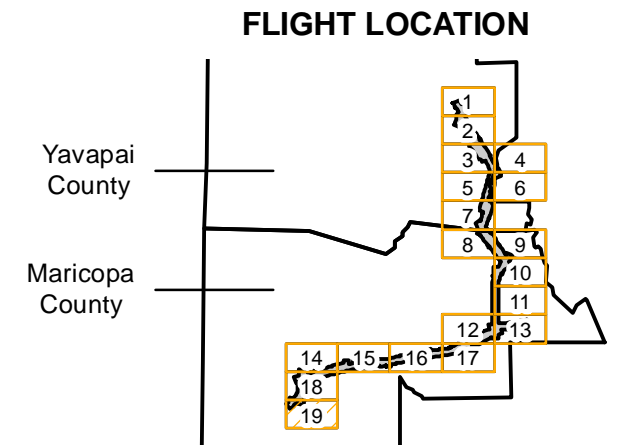
Scale of this index: 1:117,036

C-2920A

Counties: Maricopa, Yavapai (Arizona)
Flight date(s): 02-01-1934 to 02-28-1934
Scale: 1:13,500
Overlap: 60%

Complete Metadata:
<https://www.library.ucsb.edu/src/airphotos/aerial-photography-information>

Note: Phoenix area: Alhambra to Tempe and Indian School Road to Salt River. Copy negatives acquired from Teledyne, Inc. were made from original nitrate film. Prints and nitrate film acquired from Whittier College, January 2013. Nitrate negatives scanned April 2015.



Sources: Esri, HERE, Garmin, Intermap, increment P Corp., GEBCO, USGS, FAO, NPS, NRCAN, GeoBase, IGN, Kadaster NL, Ordnance Survey, Esri Japan, METI, Esri China (Hong Kong), (c) OpenStreetMap contributors, and the GIS User Community