

C-2847 (Kane)

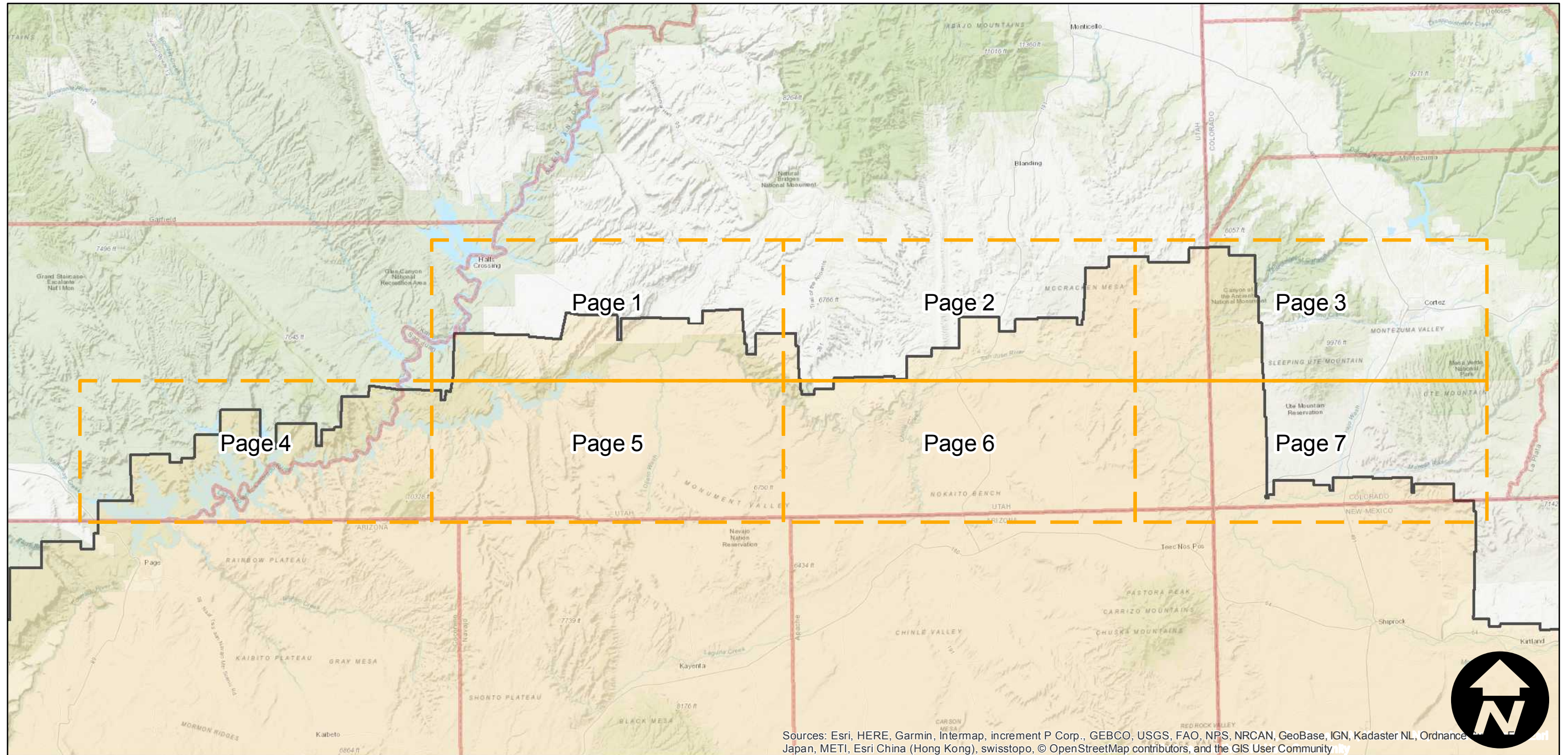
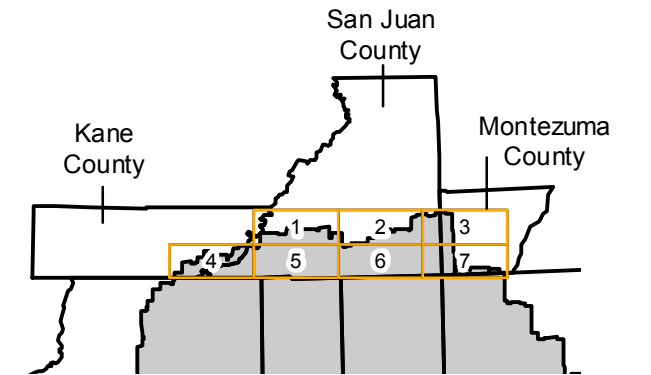
Counties: Kane, San Juan (Utah), Montezuma (Colorado)
 Flight date(s): 11-29-1933
 Scale: 1:31,680
 Overlap: 0-70%

Complete Metadata:
<https://www.library.ucsb.edu/src/airphotos/aerial-photography-information>

Note: Coverage of Bluff, Hoki Canyon, Lake Powell, Navajo Mountain, and vicinity. Part of the imagery for this flight held as 4-frame composite format negatives. Acquired from Whittier College, January 2013. Nitrate negatives scanned April 2015.

- MIL owns frame
- MIL does not own frame

FLIGHT LOCATION



Index to Aerial Photography
 Page Key

Scale of this index: 1:820,000

Sources: Esri, HERE, Garmin, Intermap, increment P Corp., GEBCO, USGS, FAO, NPS, NRCAN, GeoBase, IGN, Kadaster NL, Ordnance Survey, Esri China (Hong Kong), Swisstopo, © OpenStreetMap contributors, and the GIS User Community



C-2847 (Kane)

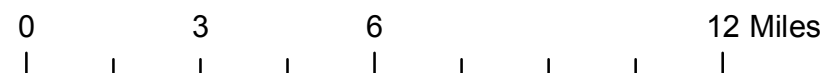
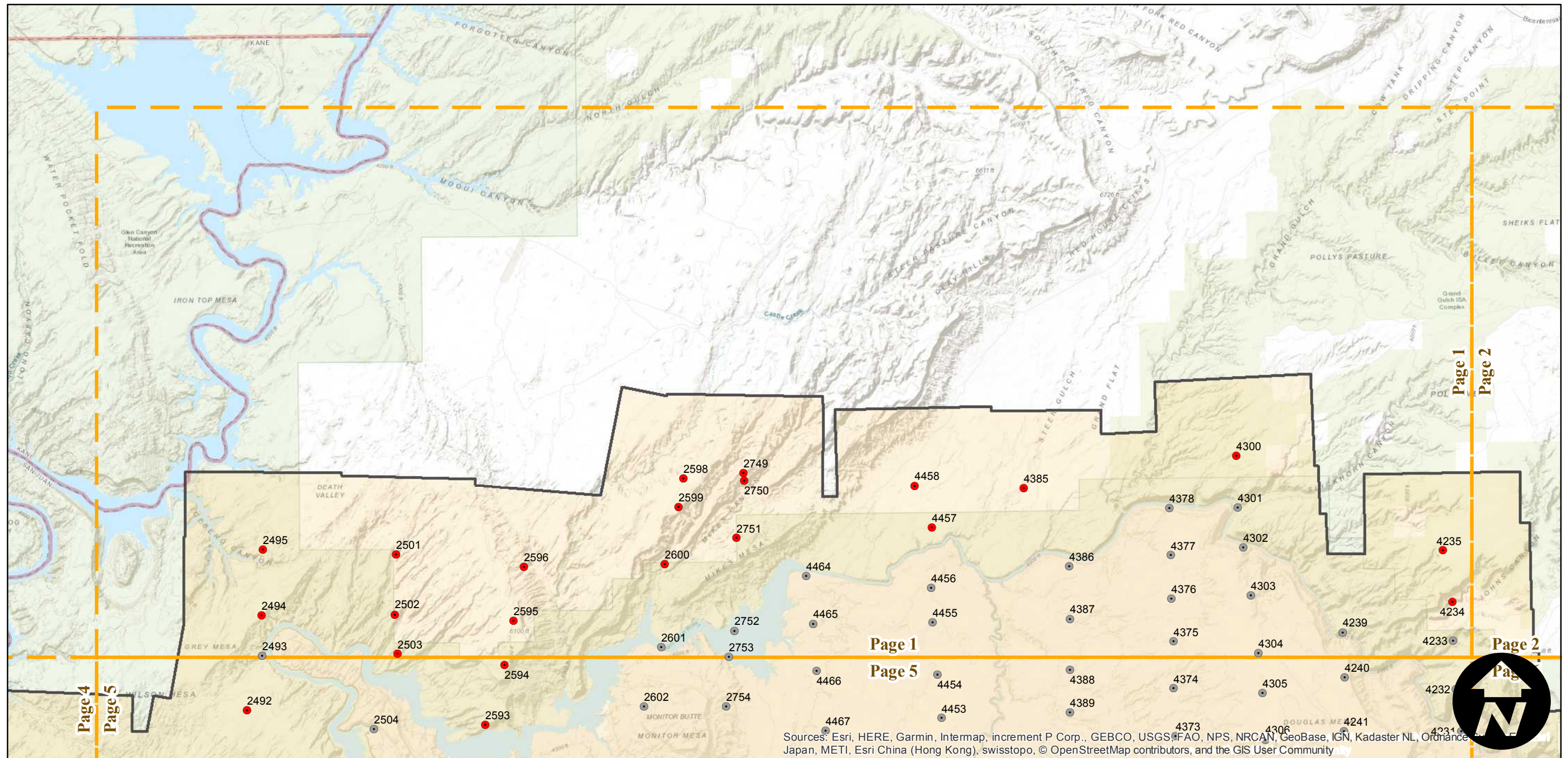
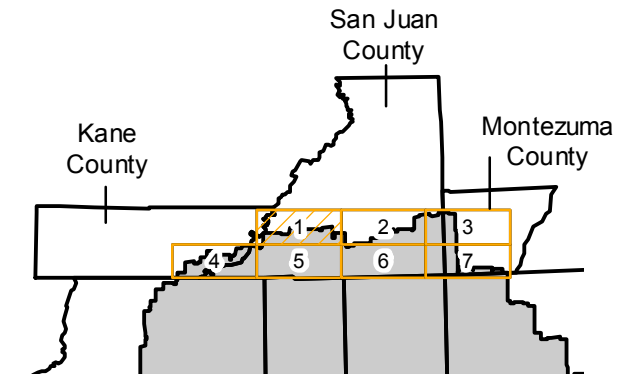
Counties: Kane, San Juan (Utah), Montezuma (Colorado)
 Flight date(s): 11-29-1933
 Scale: 1:31,680
 Overlap: 0-70%

Complete Metadata:
<https://www.library.ucsb.edu/src/airphotos/aerial-photography-information>

Note: Coverage of Bluff, Hokai Canyon, Lake Powell, Navajo Mountain, and vicinity. Part of the imagery for this flight held as 4-frame composite format negatives. Acquired from Whittier College, January 2013. Nitrate negatives scanned April 2015.

- MIL owns frame
- MIL does not own frame

FLIGHT LOCATION



C-2847 (Kane)

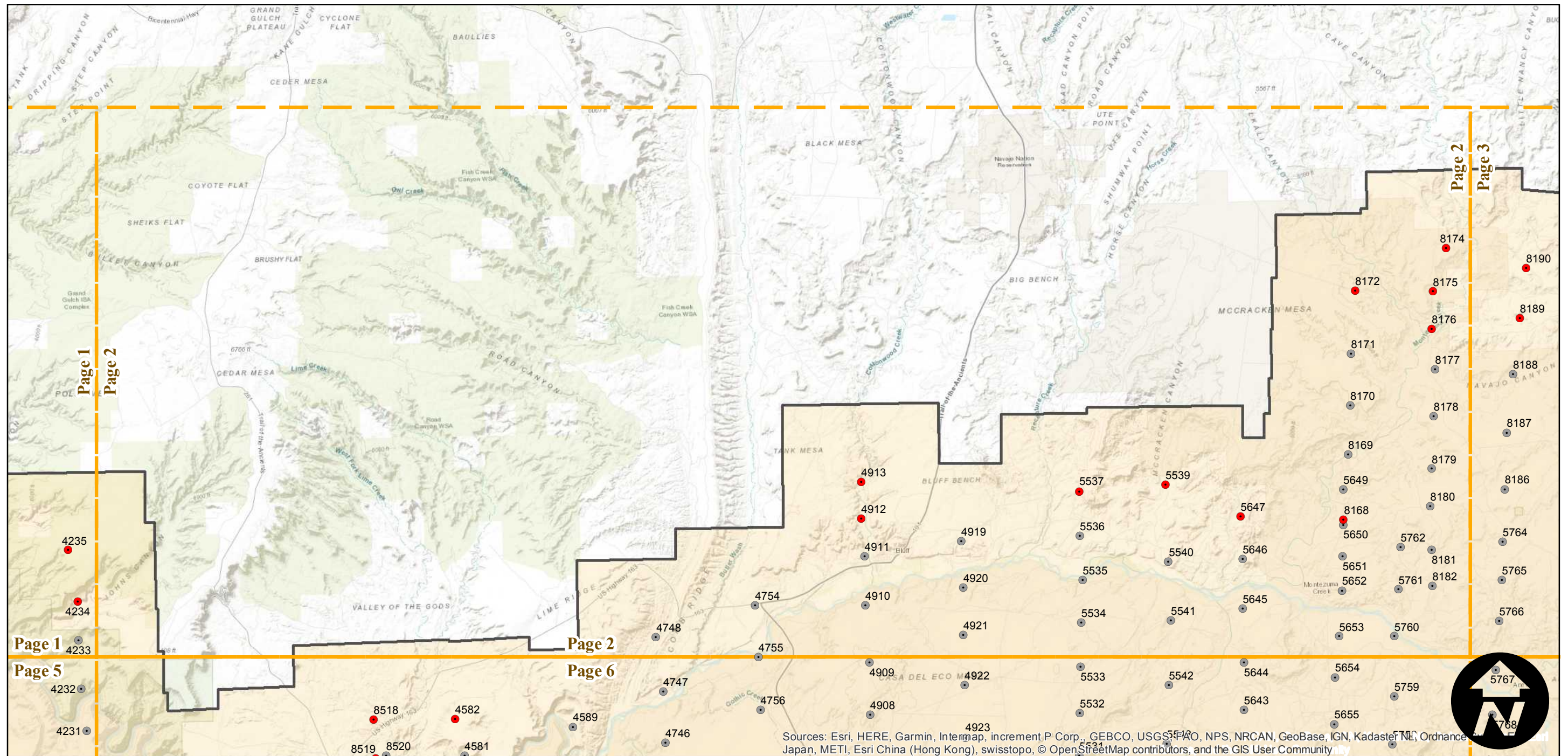
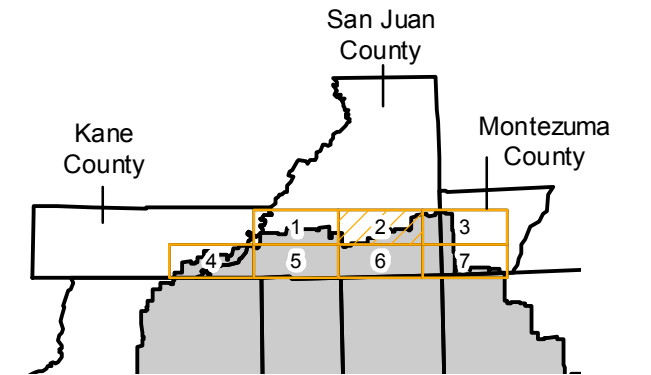
Counties: Kane, San Juan (Utah), Montezuma (Colorado)
 Flight date(s): 11-29-1933
 Scale: 1:31,680
 Overlap: 0-70%

Complete Metadata:
<https://www.library.ucsb.edu/src/airphotos/aerial-photography-information>

Note: Coverage of Bluff, Hokai Canyon, Lake Powell, Navajo Mountain, and vicinity. Part of the imagery for this flight held as 4-frame composite format negatives. Acquired from Whittier College, January 2013. Nitrate negatives scanned April 2015.

- MIL owns frame
- MIL does not own frame

FLIGHT LOCATION



Sources: Esri, HERE, Garmin, Intermap, increment P Corp., GEBCO, USGS, FAO, NPS, NRCAN, GeoBase, IGN, Kadaster NL, Ordnance Survey, Esri China (Hong Kong), Swisstopo, © OpenStreetMap contributors, and the GIS User Community

0 3 6 12 Miles

Index to Aerial Photography
 Page 2 of 7

Scale of this index: 1:210,000

C-2847 (Kane)

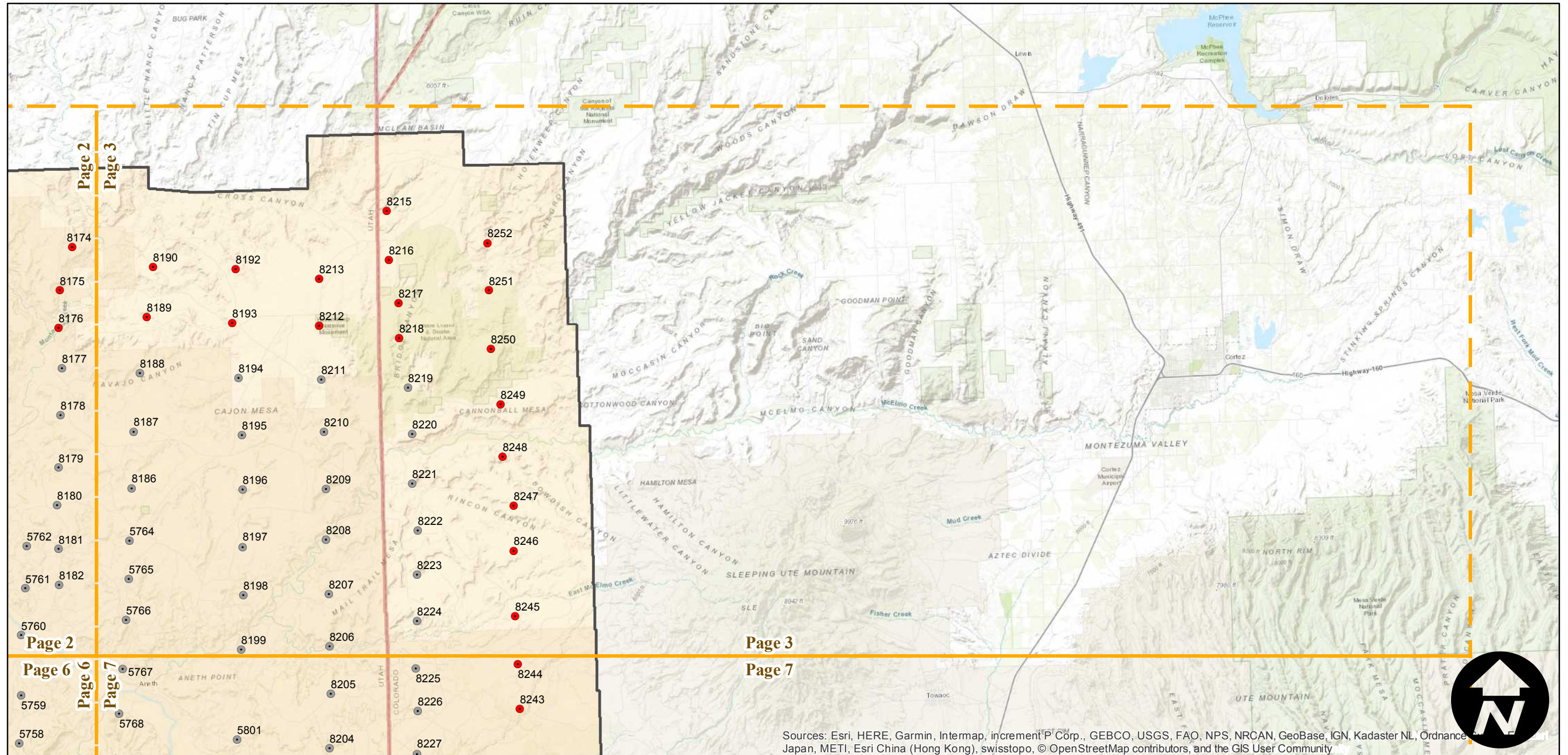
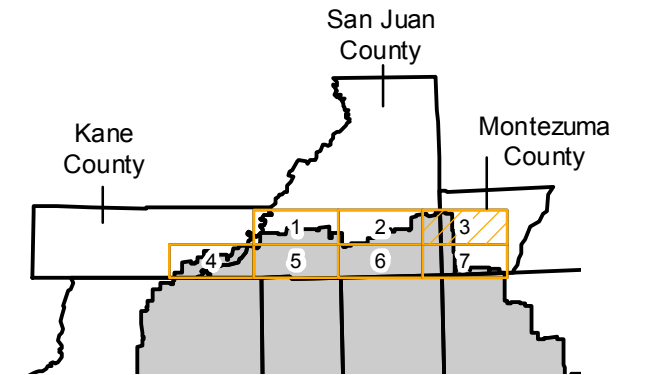
Counties: Kane, San Juan (Utah), Montezuma (Colorado)
 Flight date(s): 11-29-1933
 Scale: 1:31,680
 Overlap: 0-70%

Complete Metadata:
<https://www.library.ucsb.edu/src/airphotos/aerial-photography-information>

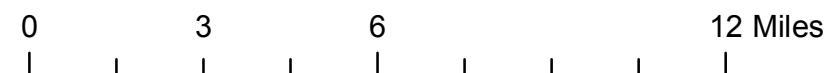
Note: Coverage of Bluff, Hoki Canyon, Lake Powell, Navajo Mountain, and vicinity. Part of the imagery for this flight held as 4-frame composite format negatives. Acquired from Whittier College, January 2013. Nitrate negatives scanned April 2015.

- MIL owns frame
- MIL does not own frame

FLIGHT LOCATION



Sources: Esri, HERE, Garmin, Intermap, increment P Corp., GEBCO, USGS, FAO, NPS, NRCAN, GeoBase, IGN, Kadaster NL, Ordnance Survey, Esri China (Hong Kong), Swisstopo, © OpenStreetMap contributors, and the GIS User Community



C-2847 (Kane)

Counties: Kane, San Juan (Utah), Montezuma (Colorado)

Flight date(s): 11-29-1933

Scale: 1:31,680

Overlap: 0-70%

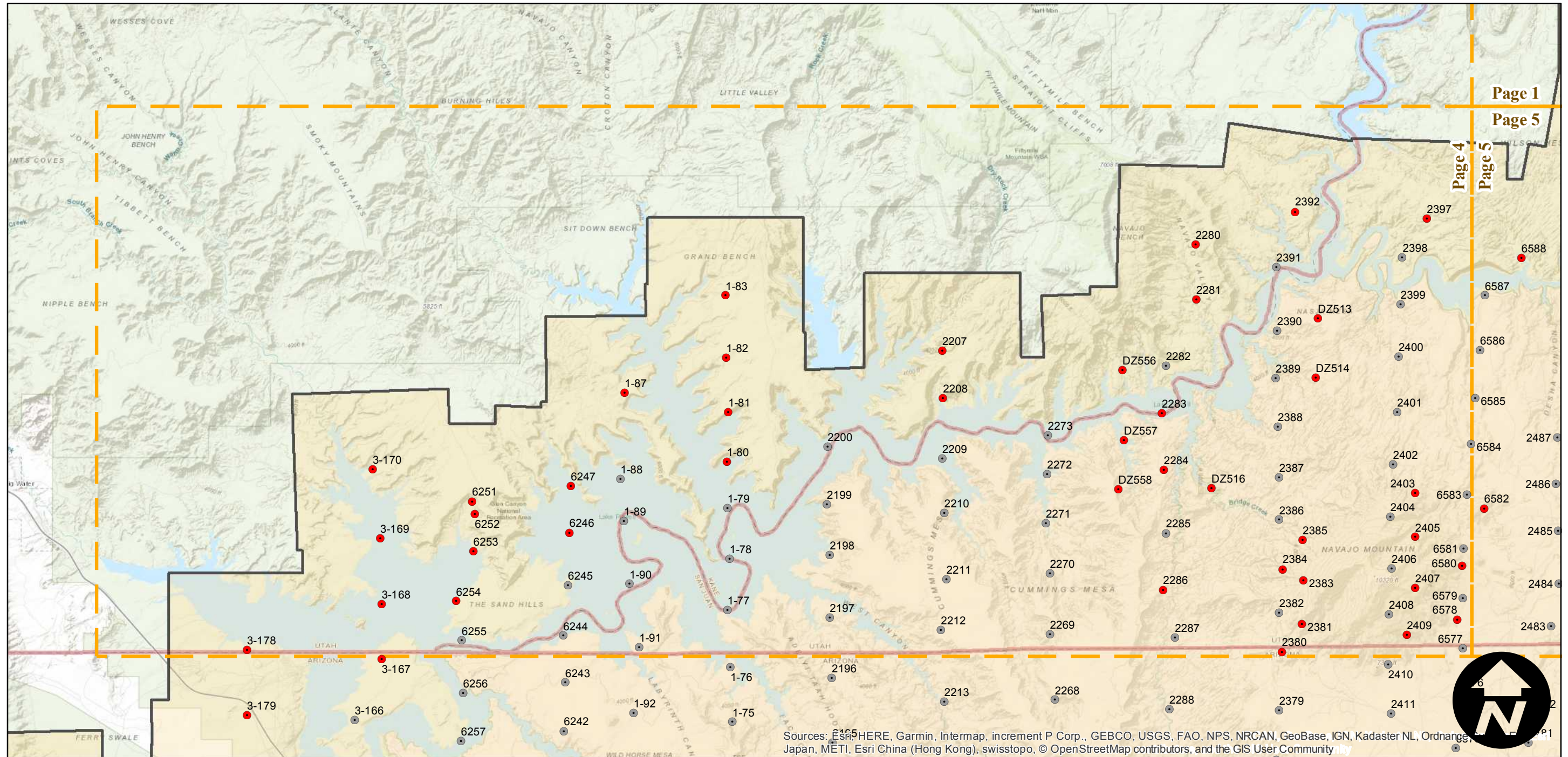
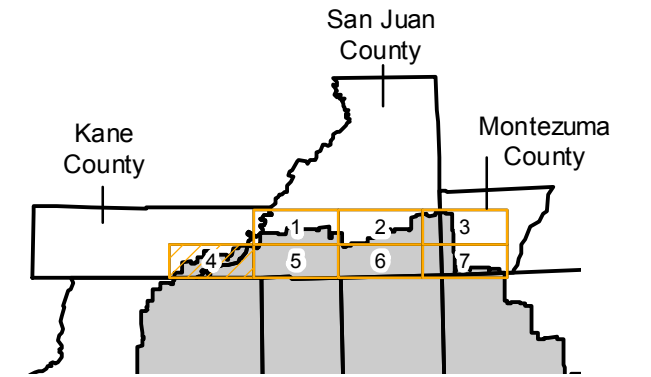
Complete Metadata:

<https://www.library.ucsb.edu/src/airphotos/aerial-photography-information>

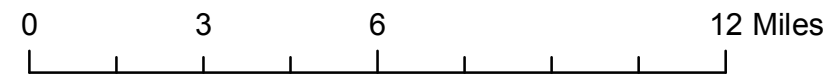
Note: Coverage of Bluff, Hokai Canyon, Lake Powell, Navajo Mountain, and vicinity. Part of the imagery for this flight held as 4-frame composite format negatives. Acquired from Whittier College, January 2013. Nitrate negatives scanned April 2015.

- MIL owns frame
- MIL does not own frame

FLIGHT LOCATION



Page 1
Page 5
Page 4
Page 5



Sources: ESRI, HERE, Garmin, Intermap, increment P Corp., GEBCO, USGS, FAO, NPS, NRCAN, GeoBase, IGN, Kadaster NL, Ordnance Survey, Esri, Swisstopo, Swisstopo, IGN, Esri, Japan, METI, Esri China (Hong Kong), swisstopo, © OpenStreetMap contributors, and the GIS User Community

C-2847 (Kane)

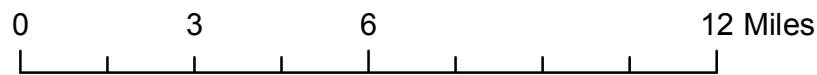
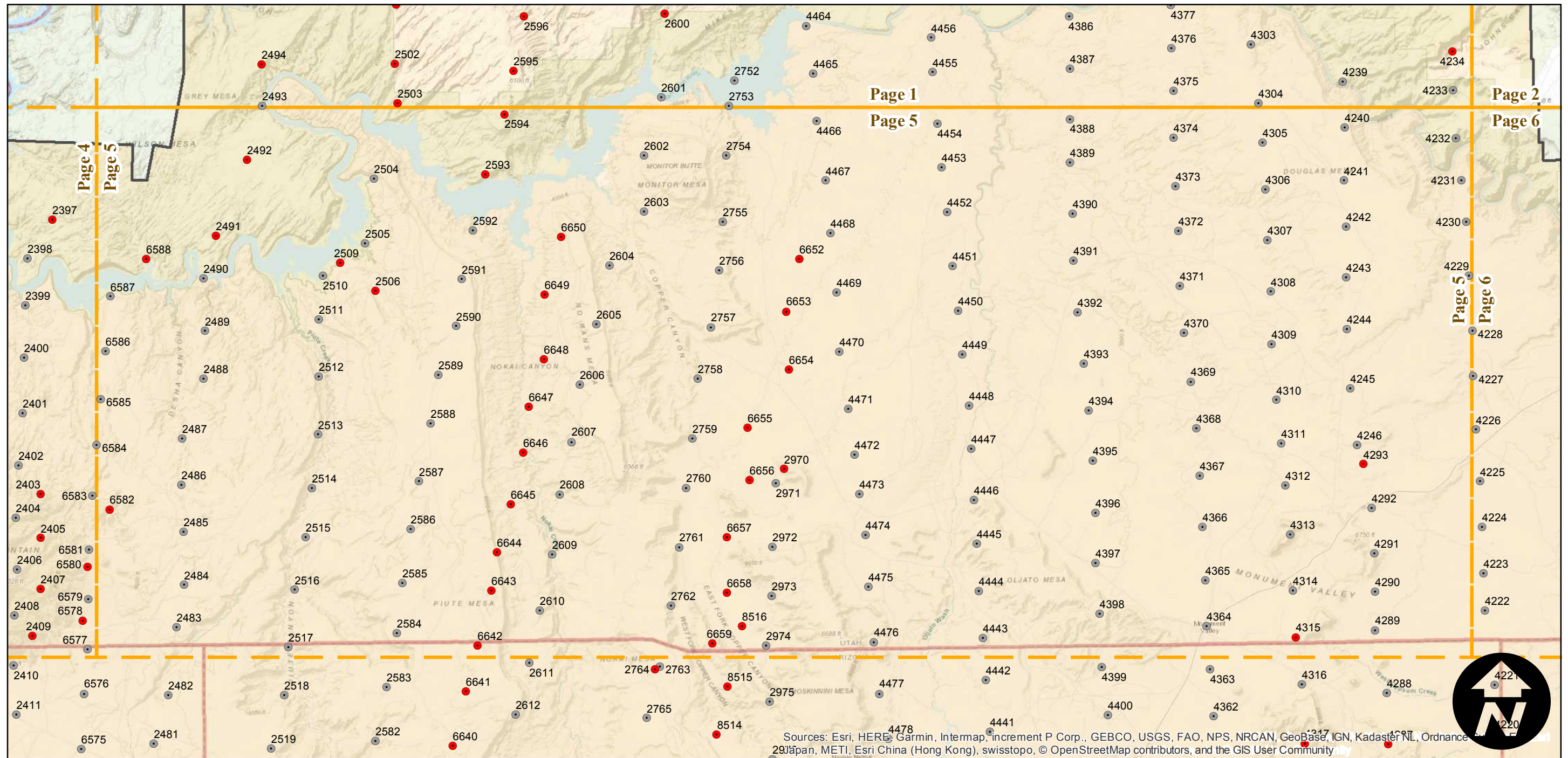
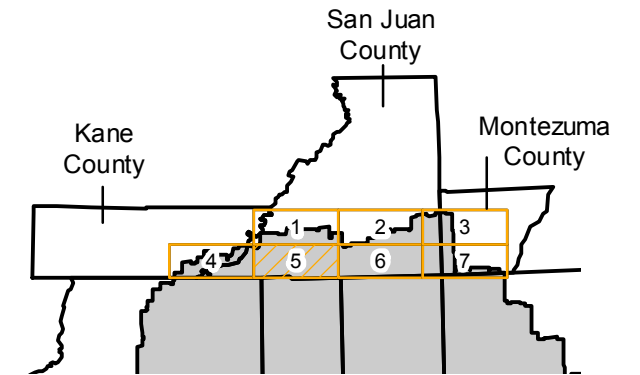
Counties: Kane, San Juan (Utah), Montezuma (Colorado)
 Flight date(s): 11-29-1933
 Scale: 1:31,680
 Overlap: 0-70%

Complete Metadata:
<https://www.library.ucsb.edu/src/airphotos/aerial-photography-information>

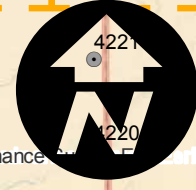
Note: Coverage of Bluff, Hokai Canyon, Lake Powell, Navajo Mountain, and vicinity. Part of the imagery for this flight held as 4-frame composite format negatives. Acquired from Whittier College, January 2013. Nitrate negatives scanned April 2015.

- MIL owns frame
- MIL does not own frame

FLIGHT LOCATION



Sources: Esri, HERE, Garmin, Intermap, increment P Corp., GEBCO, USGS, FAO, NPS, NRCAN, GeoBase, IGN, Kadaster NL, Ordnance Survey, Esri Japan, METI, Esri China (Hong Kong), swisstopo, © OpenStreetMap contributors, and the GIS User Community



C-2847 (Kane)

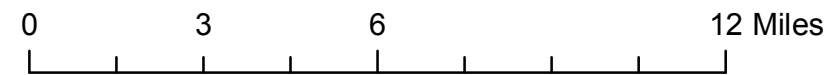
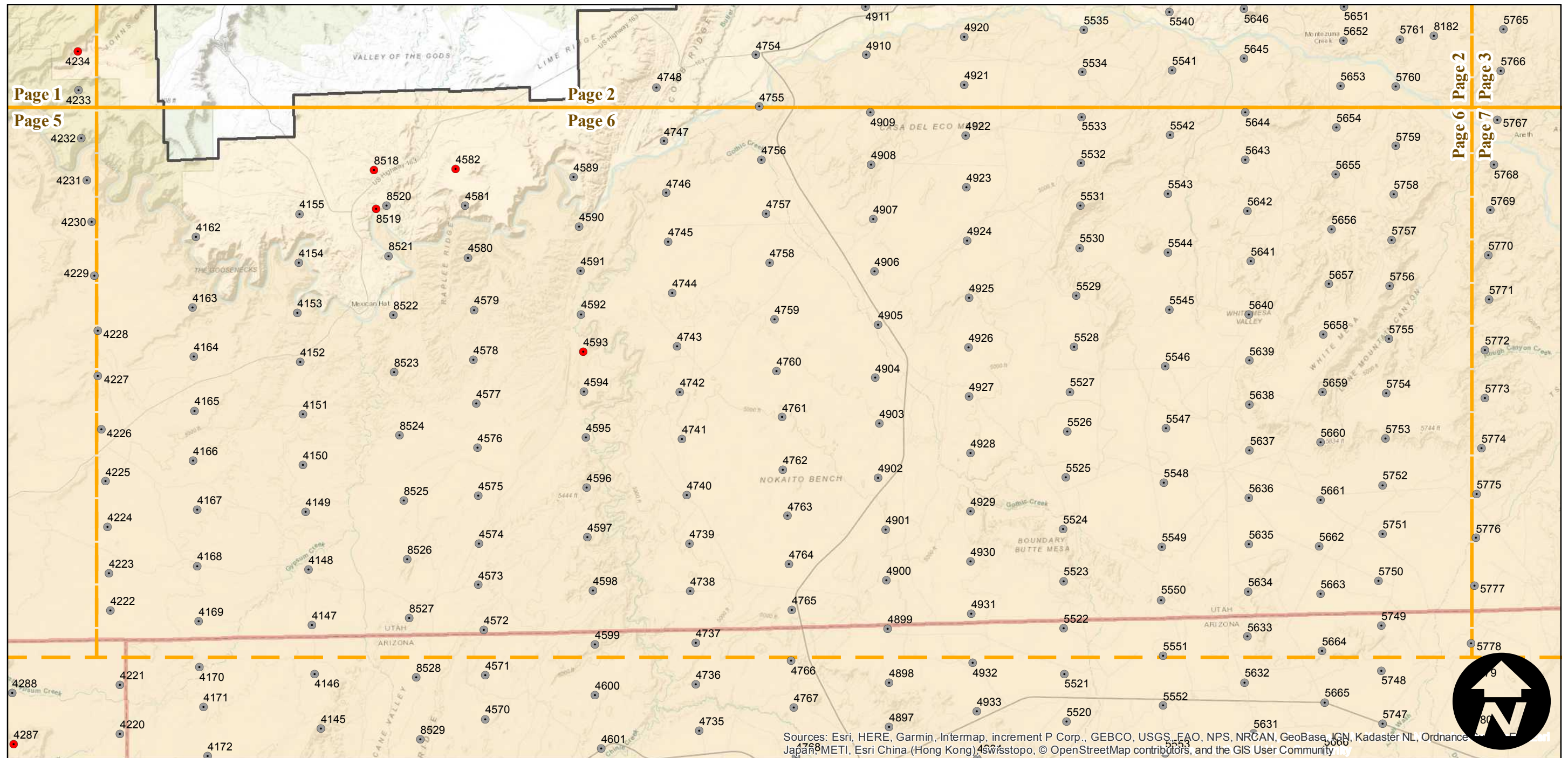
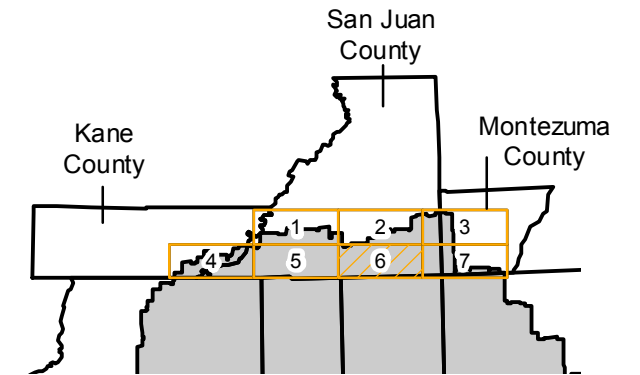
Counties: Kane, San Juan (Utah), Montezuma (Colorado)
 Flight date(s): 11-29-1933
 Scale: 1:31,680
 Overlap: 0-70%

Complete Metadata:
<https://www.library.ucsb.edu/src/airphotos/aerial-photography-information>

Note: Coverage of Bluff, Hokai Canyon, Lake Powell, Navajo Mountain, and vicinity. Part of the imagery for this flight held as 4-frame composite format negatives. Acquired from Whittier College, January 2013. Nitrate negatives scanned April 2015.

- MIL owns frame
- MIL does not own frame

FLIGHT LOCATION



Sources: Esri, HERE, Garmin, Intermap, increment P Corp., GEBCO, USGS, FAO, NPS, NRCAN, GeoBase, IGN, Kadaster NL, Ordnance Survey, Esri Japan, METI, Esri China (Hong Kong), Swisstopo, © OpenStreetMap contributors, and the GIS User Community



C-2847 (Kane)

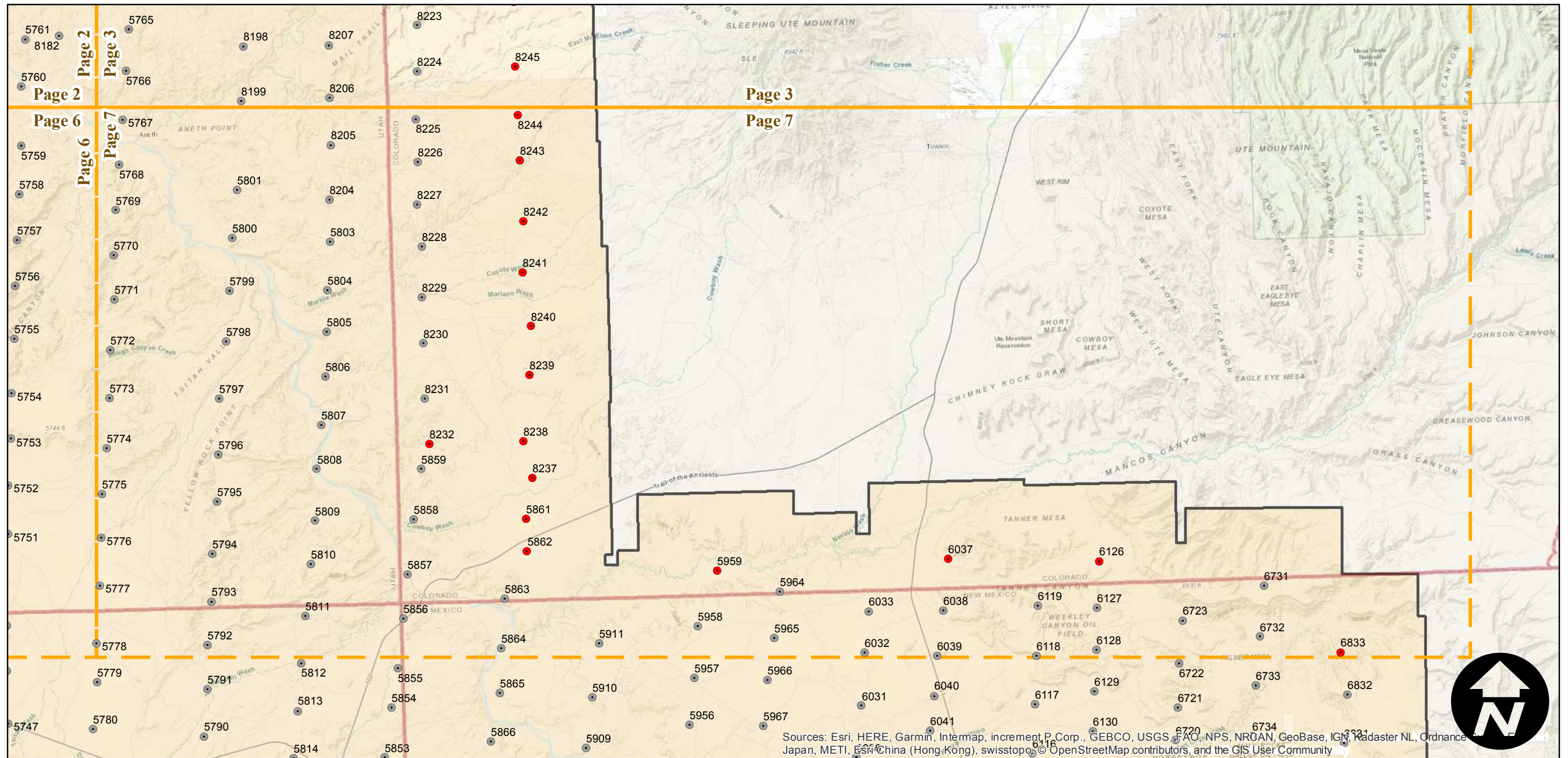
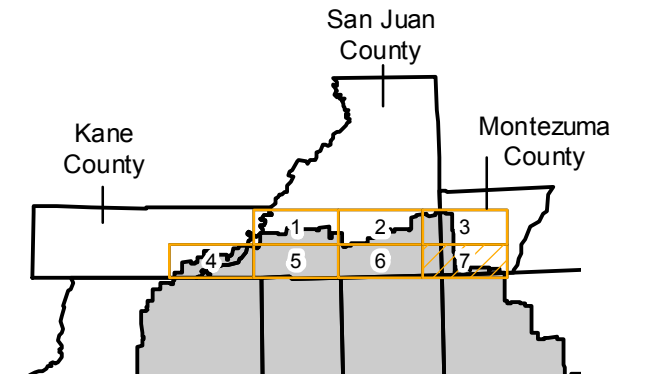
Counties: Kane, San Juan (Utah), Montezuma (Colorado)
 Flight date(s): 11-29-1933
 Scale: 1:31,680
 Overlap: 0-70%

Complete Metadata:
<https://www.library.ucsb.edu/src/airphotos/aerial-photography-information>

Note: Coverage of Bluff, Hokai Canyon, Lake Powell, Navajo Mountain, and vicinity. Part of the imagery for this flight held as 4-frame composite format negatives. Acquired from Whittier College, January 2013. Nitrate negatives scanned April 2015.

- MIL owns frame
- MIL does not own frame

FLIGHT LOCATION



Sources: Esri, HERE, Garmin, Intermap, increment P Corp., GEBCO, USGS, FAO, NPS, NRCAN, GeoBase, IGN, Kadaster NL, Ordnance Survey, Esri China (Hong Kong), swisstopo, © OpenStreetMap contributors, and the GIS User Community

0 3 6 12 Miles

Index to Aerial Photography
 Page 7 of 7

Scale of this index: 1:210,000