

C-2847 (Coconino)

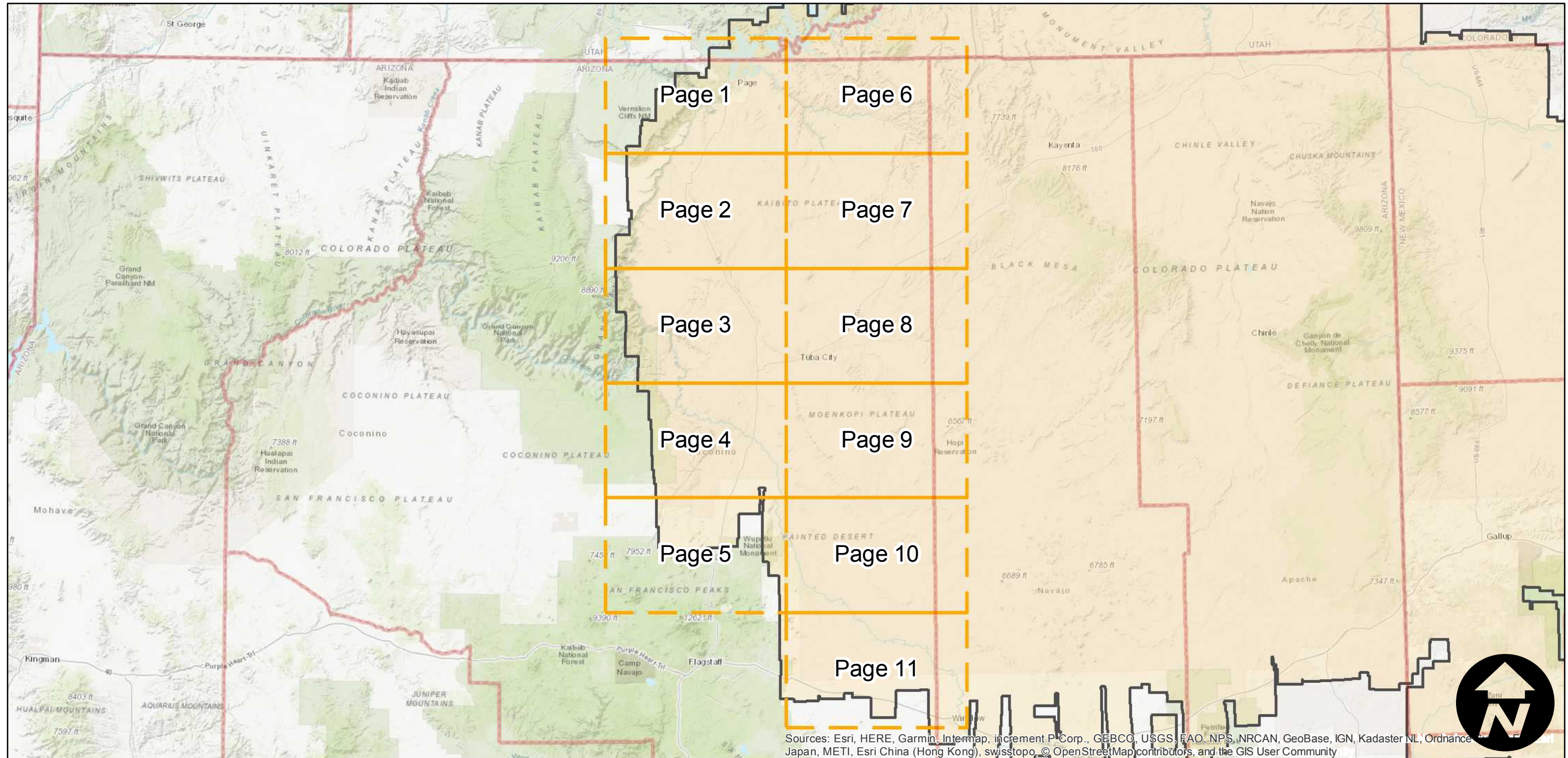
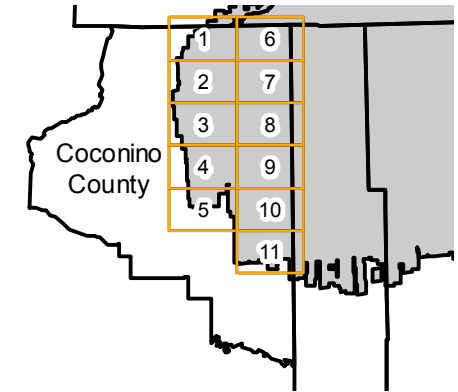
Counties: Coconino (Arizona)
 Flight date(s): 11-29-1933
 Scale: 1:31,680
 Overlap: 0-95%

Complete Metadata:
<https://www.library.ucsb.edu/src/airphotos/aerial-photography-information>

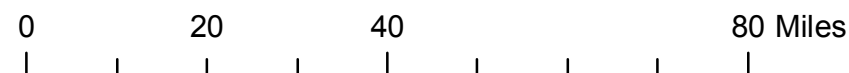
Note: Coverage of Marble Canyon, Tonalea, Tuba City, Winslow, and vicinity. Part of the imagery for this flight held as 4-frame composite format negatives. Acquired from Whittier College, January 2013. Nitrate negatives scanned April 2015.

- MIL owns frame
- MIL does not own frame

FLIGHT LOCATION



Sources: Esri, HERE, Garmin, Intermap, increment P Corp., GEBCO, USGS, FAO, NPS, NRCAN, GeoBase, IGN, Kadaster NL, Ordnance Survey, Esri China (Hong Kong), Swisstopo, © OpenStreetMap contributors, and the GIS User Community



Index to Aerial Photography
 Page Key

Scale of this index: 1:1,350,000

C-2847 (Coconino)

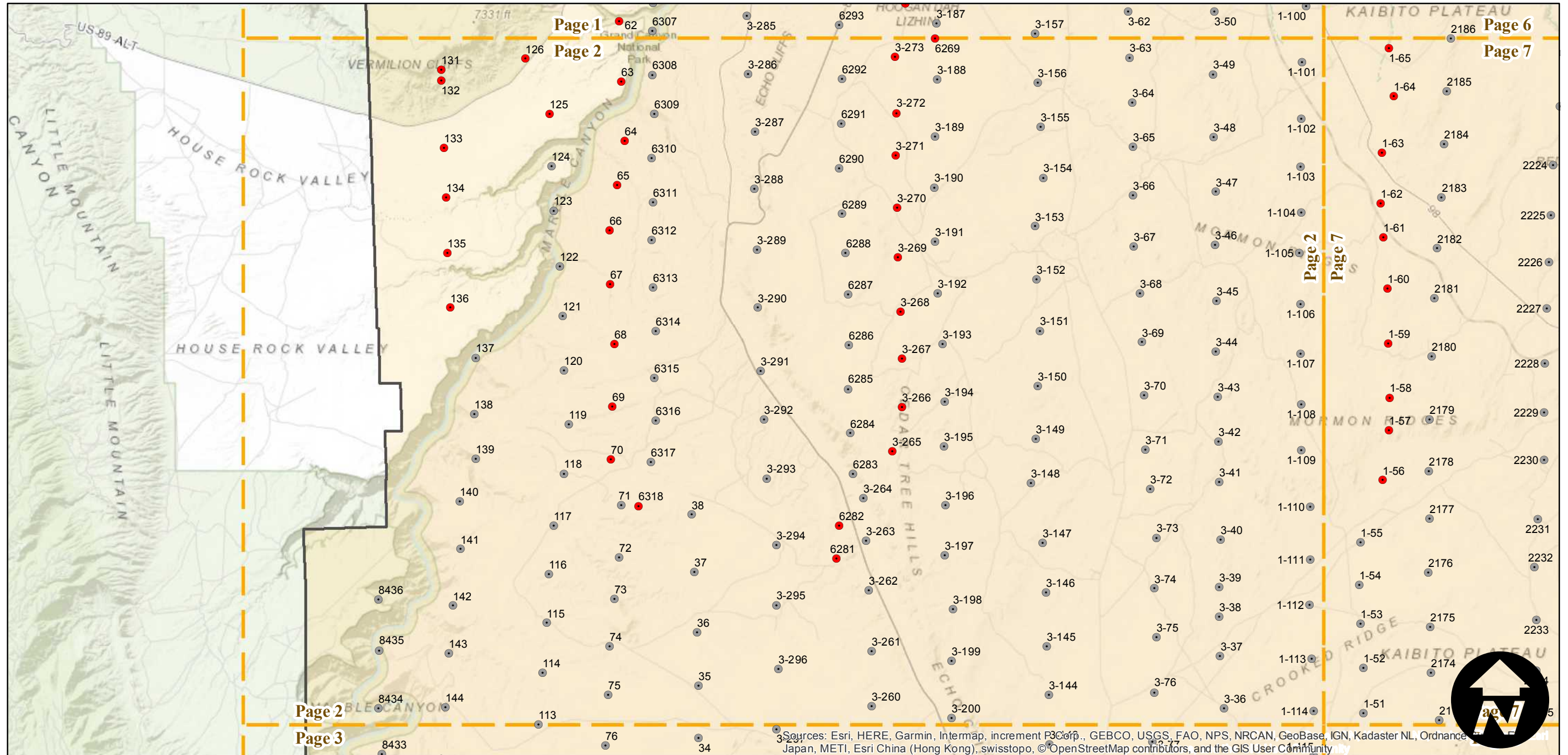
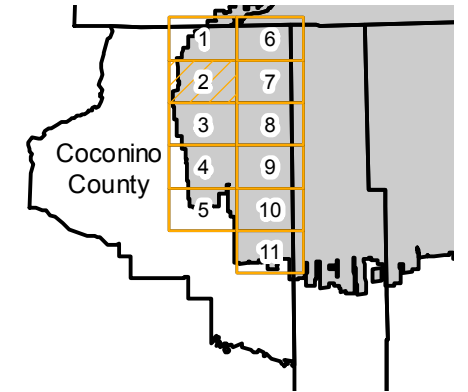
Counties: Coconino (Arizona)
 Flight date(s): 11-29-1933
 Scale: 1:31,680
 Overlap: 0-95%

Complete Metadata:
<https://www.library.ucsb.edu/src/airphotos/aerial-photography-information>

Note: Coverage of Marble Canyon, Tonalea, Tuba City, Winslow, and vicinity. Part of the imagery for this flight held as 4-frame composite format negatives. Acquired from Whittier College, January 2013. Nitrate negatives scanned April 2015.

- MIL owns frame
- MIL does not own frame

FLIGHT LOCATION



0 3 6 12 Miles

Index to Aerial Photography
 Page 2 of 11

Scale of this index: 1:225,000

Sources: Esri, HERE, Garmin, Intermap, increment P Corp., GEBCO, USGS, FAO, NPS, NRCAN, GeoBase, IGN, Kadaster NL, Ordnance Survey, Esri Japan, METI, Esri China (Hong Kong), swisstopo, © OpenStreetMap contributors, and the GIS User Community

C-2847 (Coconino)

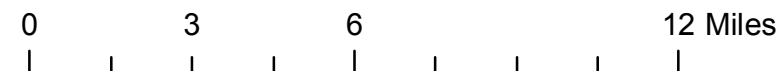
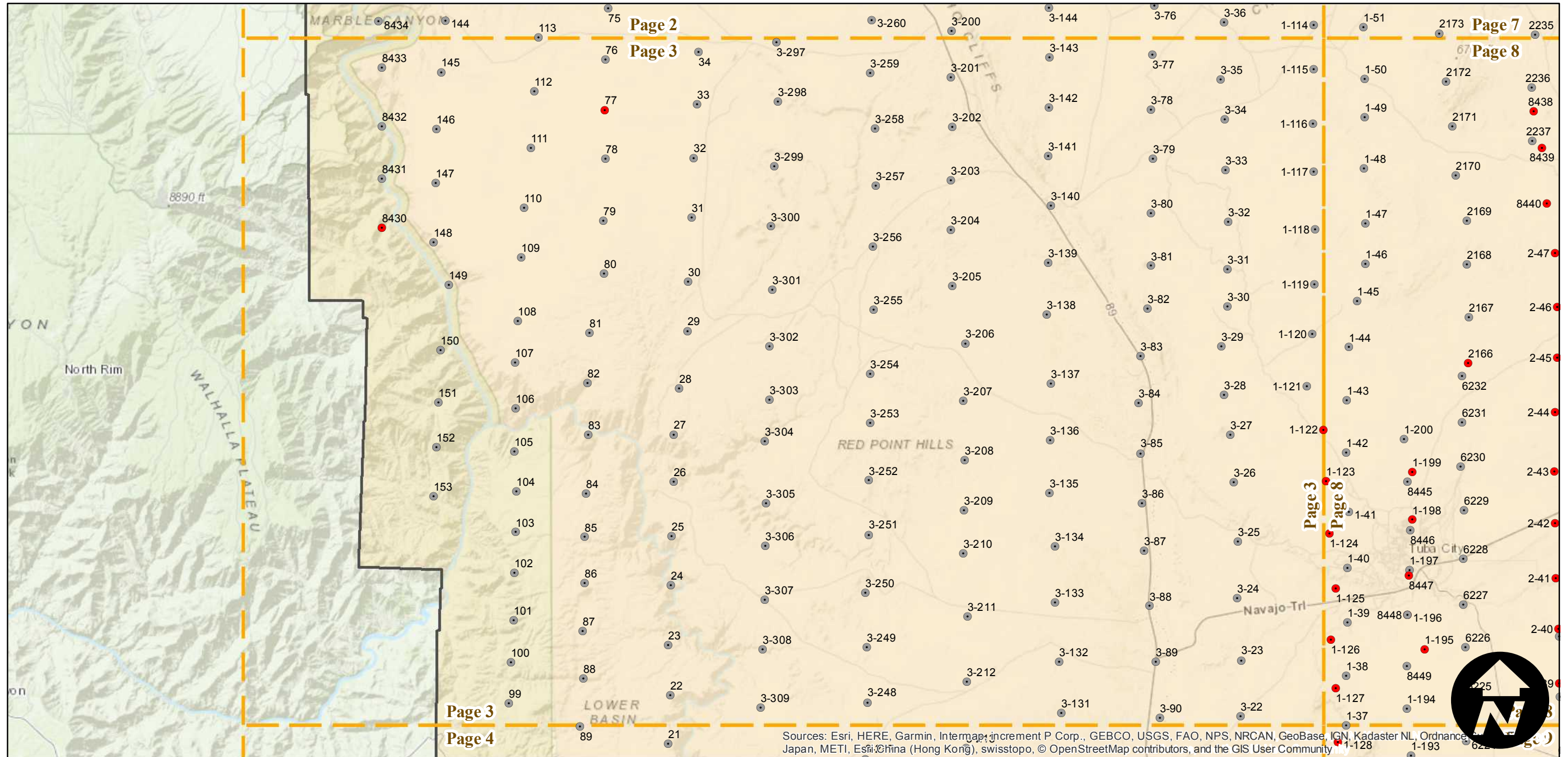
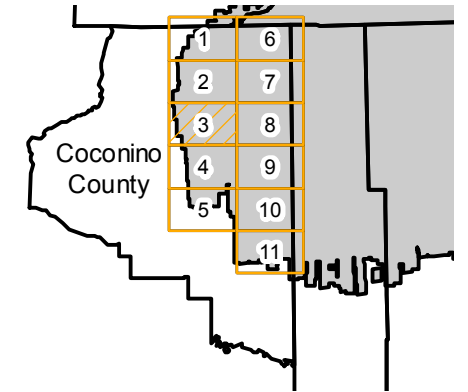
Counties: Coconino (Arizona)
 Flight date(s): 11-29-1933
 Scale: 1:31,680
 Overlap: 0-95%

Complete Metadata:
<https://www.library.ucsb.edu/src/airphotos/aerial-photography-information>

Note: Coverage of Marble Canyon, Tonalea, Tuba City, Winslow, and vicinity. Part of the imagery for this flight held as 4-frame composite format negatives. Acquired from Whittier College, January 2013. Nitrate negatives scanned April 2015.

- MIL owns frame
- MIL does not own frame

FLIGHT LOCATION



Sources: Esri, HERE, Garmin, Intermap, increment P Corp., GEBCO, USGS, FAO, NPS, NRCAN, GeoBase, IGN, Kadaster NL, Ordnance Survey, Esri, China (Hong Kong), Swisstopo, © OpenStreetMap contributors, and the GIS User Community

C-2847 (Coconino)

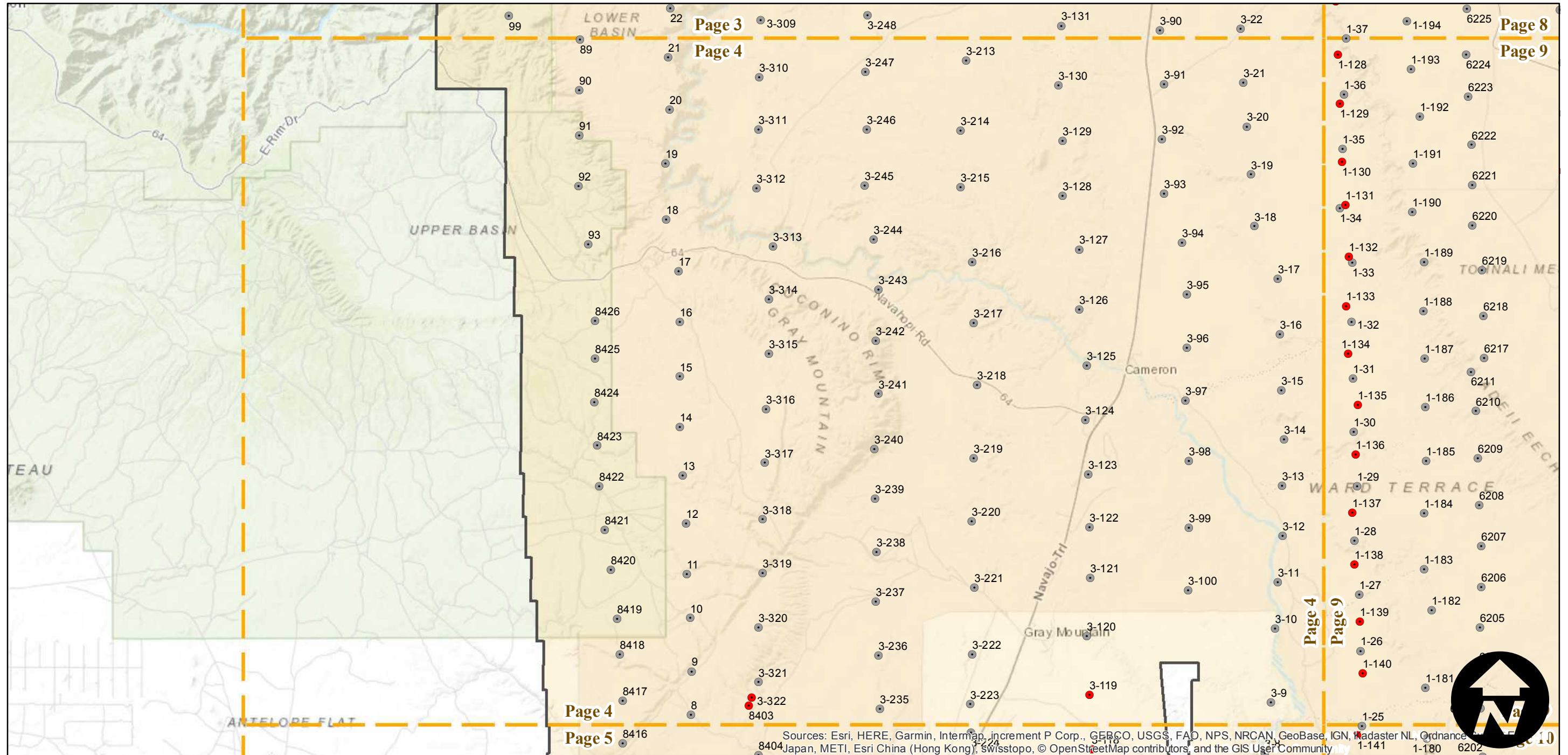
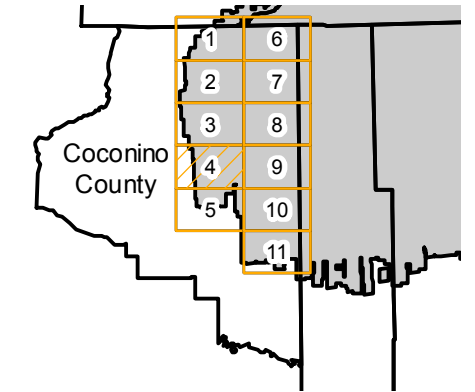
Counties: Coconino (Arizona)
 Flight date(s): 11-29-1933
 Scale: 1:31,680
 Overlap: 0-95%

Complete Metadata:
<https://www.library.ucsb.edu/src/airphotos/aerial-photography-information>

Note: Coverage of Marble Canyon, Tonalea, Tuba City, Winslow, and vicinity. Part of the imagery for this flight held as 4-frame composite format negatives. Acquired from Whittier College, January 2013. Nitrate negatives scanned April 2015.

- MIL owns frame
- MIL does not own frame

FLIGHT LOCATION



Sources: Esri, HERE, Garmin, Intermap, increment P Corp., GEBCO, USGS, FAO, NPS, NRCAN, GeoBase, IGN, Kadaster NL, Ordnance Survey, Esri Japan, METI, Esri China (Hong Kong), Swisstopo, © OpenStreetMap contributors, and the GIS User Community

C-2847 (Coconino)

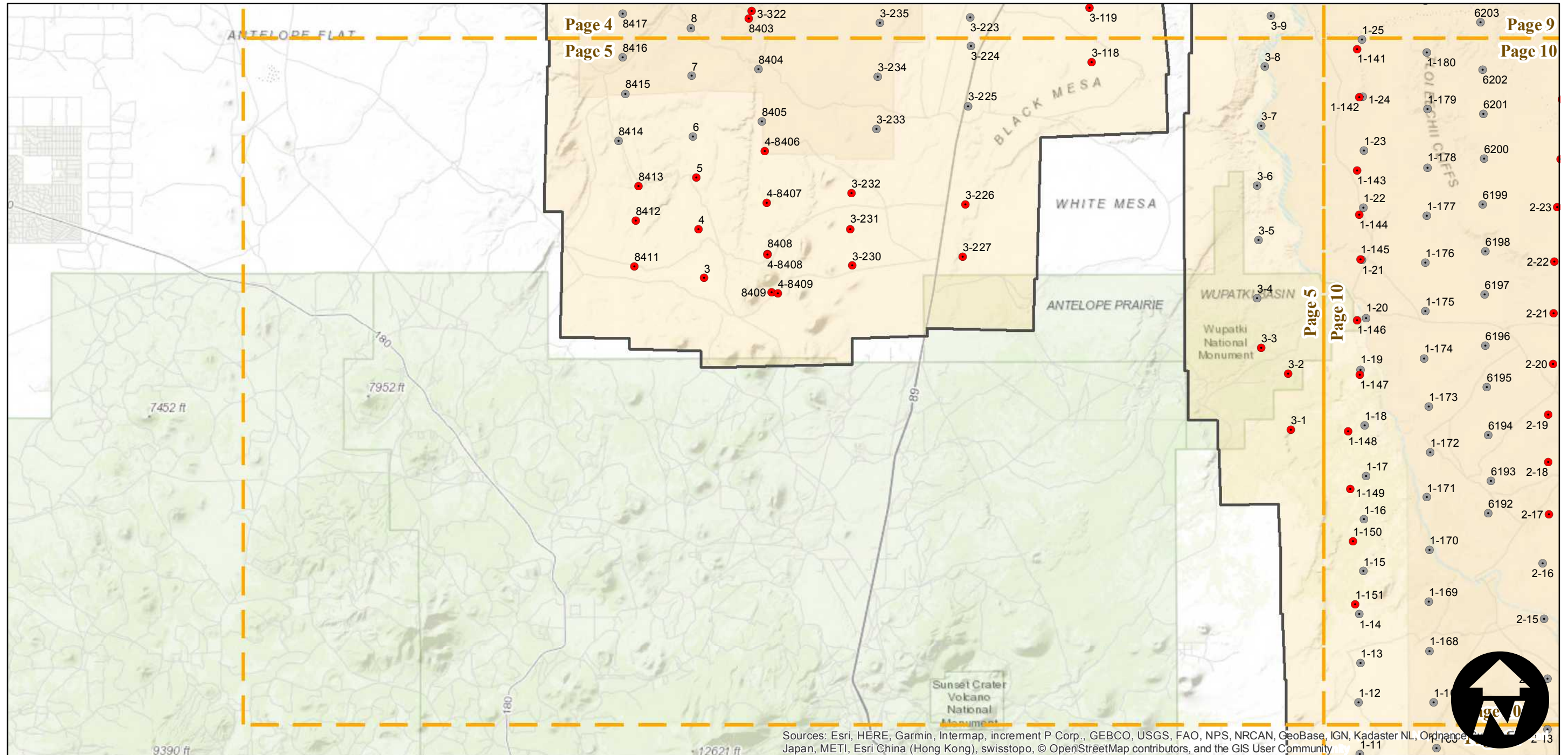
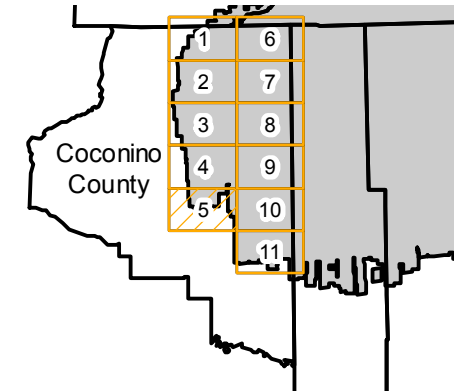
Counties: Coconino (Arizona)
 Flight date(s): 11-29-1933
 Scale: 1:31,680
 Overlap: 0-95%

Complete Metadata:
<https://www.library.ucsb.edu/src/airphotos/aerial-photography-information>

Note: Coverage of Marble Canyon, Tonalea, Tuba City, Winslow, and vicinity. Part of the imagery for this flight held as 4-frame composite format negatives. Acquired from Whittier College, January 2013. Nitrate negatives scanned April 2015.

- MIL owns frame
- MIL does not own frame

FLIGHT LOCATION



Sources: Esri, HERE, Garmin, Intermap, increment P Corp., GEBCO, USGS, FAO, NPS, NRCAN, GeoBase, IGN, Kadaster NL, Ordnance Survey, Esri Japan, METI, Esri China (Hong Kong), swisstopo, © OpenStreetMap contributors, and the GIS User Community

0 3 6 12 Miles

C-2847 (Coconino)

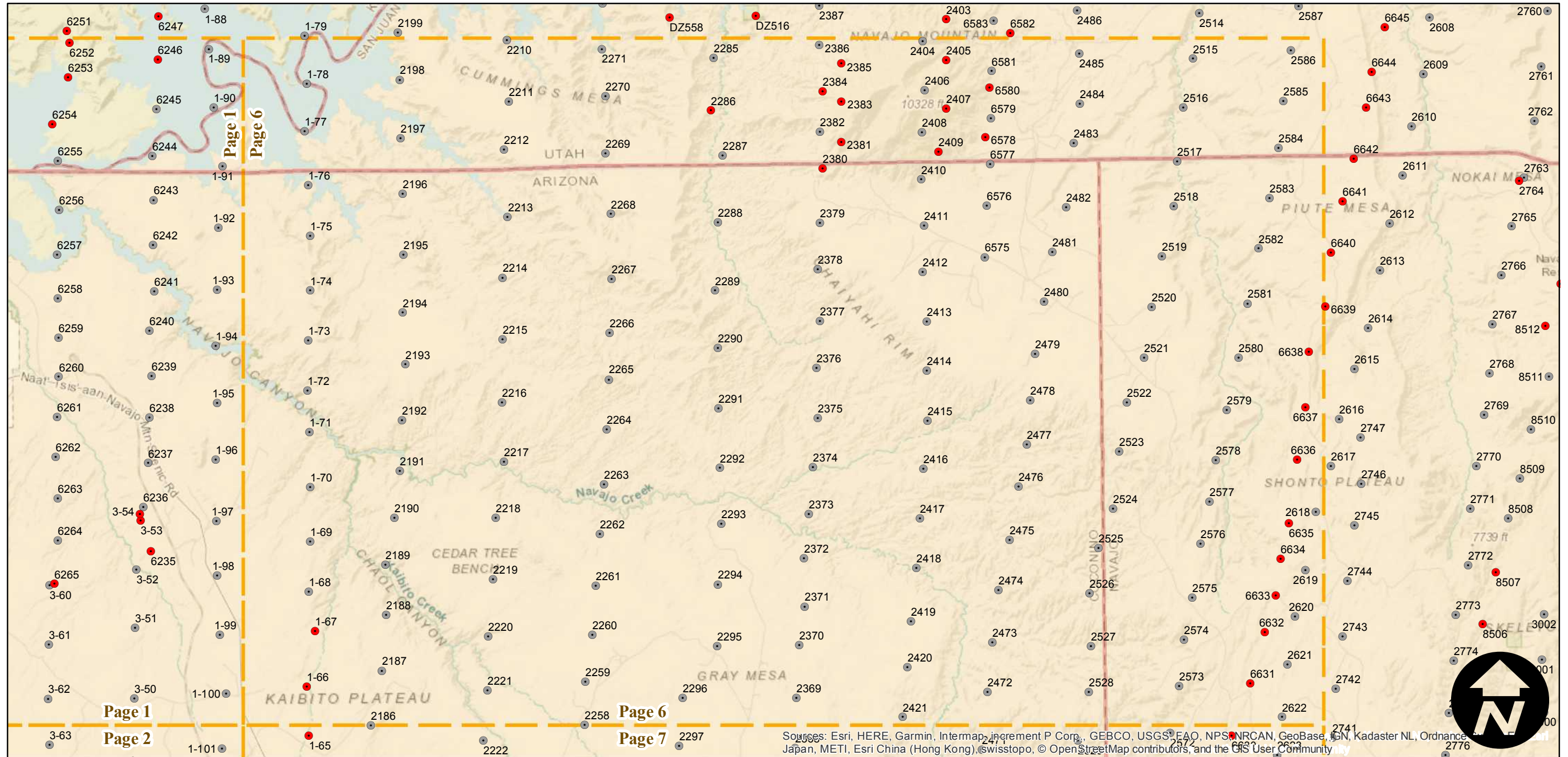
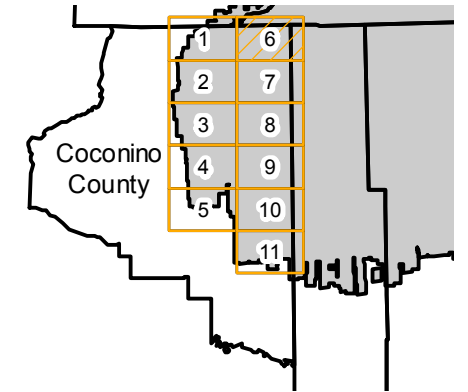
Counties: Coconino (Arizona)
 Flight date(s): 11-29-1933
 Scale: 1:31,680
 Overlap: 0-95%

Complete Metadata:
<https://www.library.ucsb.edu/src/airphotos/aerial-photography-information>

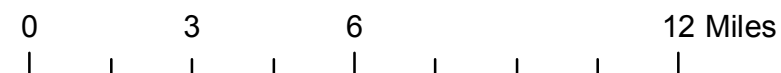
Note: Coverage of Marble Canyon, Tonalea, Tuba City, Winslow, and vicinity. Part of the imagery for this flight held as 4-frame composite format negatives. Acquired from Whittier College, January 2013. Nitrate negatives scanned April 2015.

- MIL owns frame
- MIL does not own frame

FLIGHT LOCATION



Source: Esri, HERE, Garmin, Intermap, increment P Corp., GEBCO, USGS, FAO, NPS, NRCAN, GeoBase, IGN, Kadaster NL, Ordnance Survey, Esri China (Hong Kong), Swisstopo, © OpenStreetMap contributors, and the GIS User Community



C-2847 (Coconino)

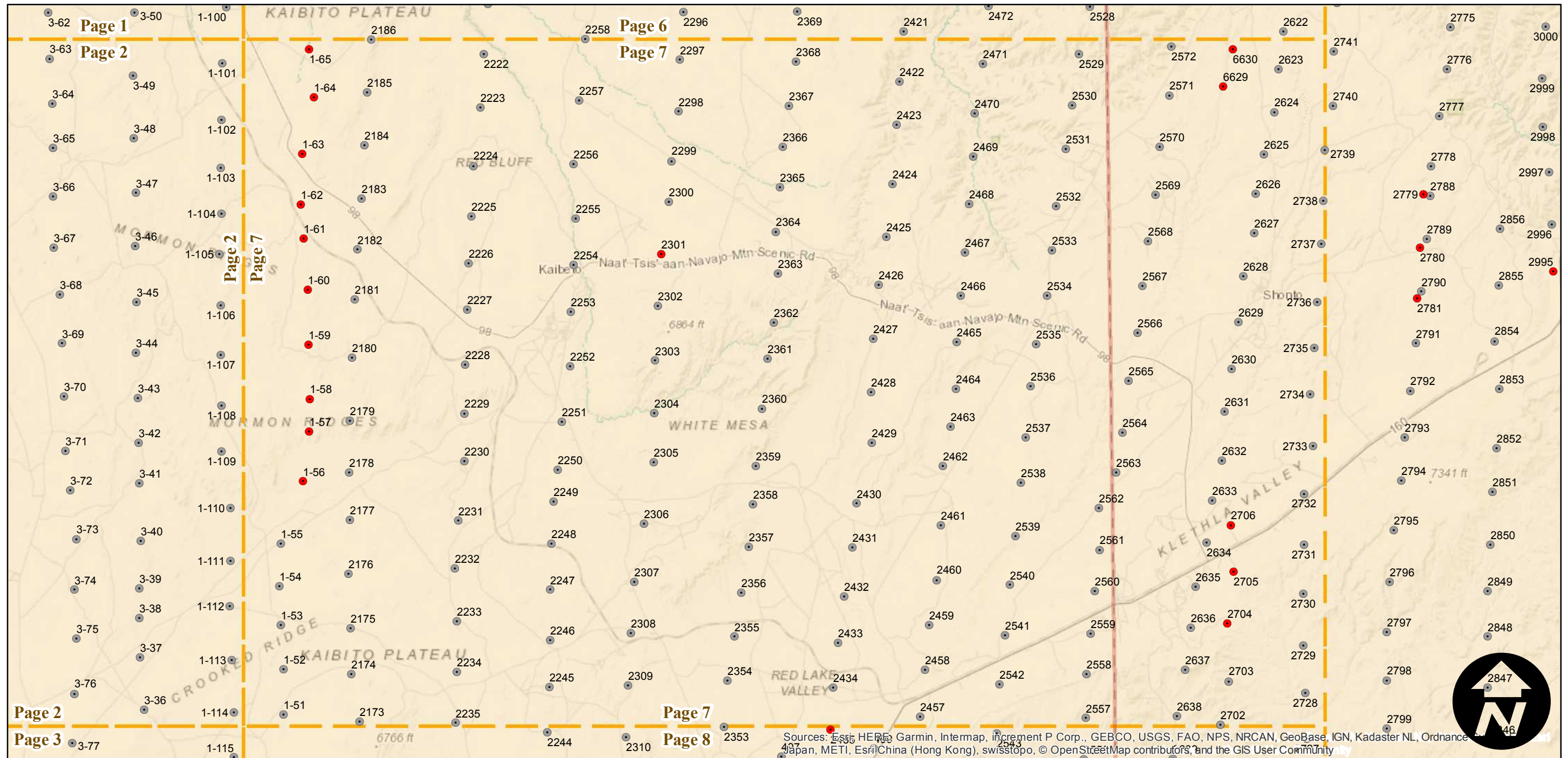
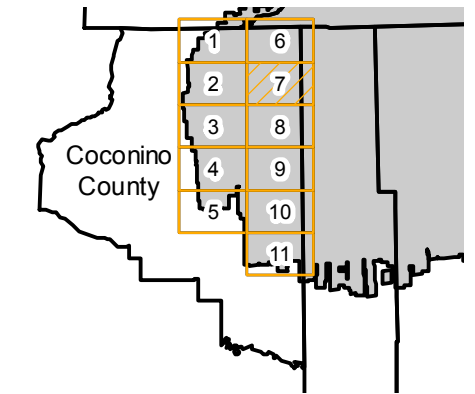
Counties: Coconino (Arizona)
 Flight date(s): 11-29-1933
 Scale: 1:31,680
 Overlap: 0-95%

Complete Metadata:
<https://www.library.ucsb.edu/src/airphotos/aerial-photography-information>

Note: Coverage of Marble Canyon, Tonalea, Tuba City, Winslow, and vicinity. Part of the imagery for this flight held as 4-frame composite format negatives. Acquired from Whittier College, January 2013. Nitrate negatives scanned April 2015.

- MIL owns frame
- MIL does not own frame

FLIGHT LOCATION



0 3 6 12 Miles

Index to Aerial Photography
 Page 7 of 11

Scale of this index: 1:225,000

Sources: Esri, HERE, Garmin, Intermap, increment P Corp., GEBCO, USGS, FAO, NPS, NRCAN, GeoBase, IGN, Kadaster NL, Ordnance Survey, Esri Japan, METI, Esri China (Hong Kong), swisstopo, © OpenStreetMap contributors, and the GIS User Community

C-2847 (Coconino)

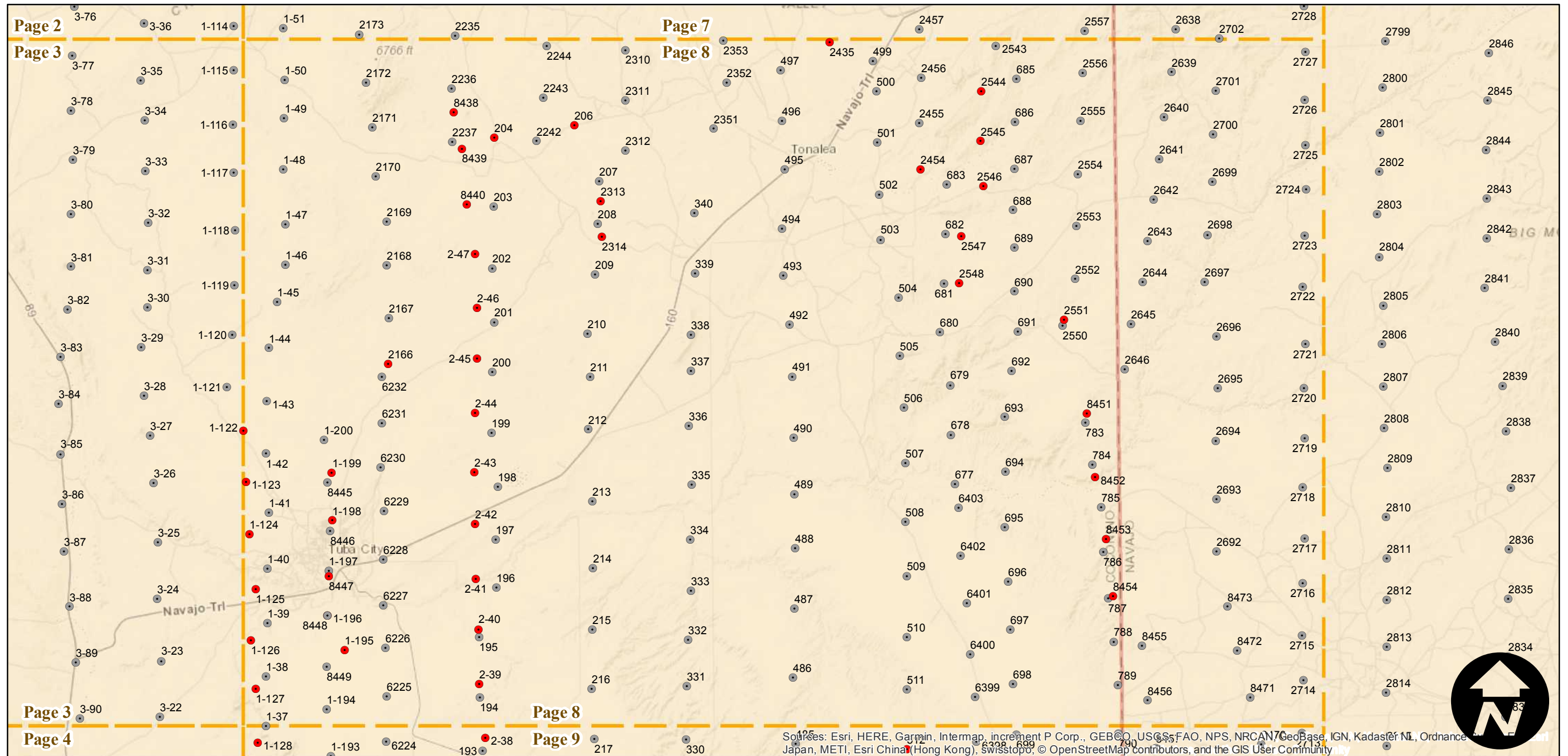
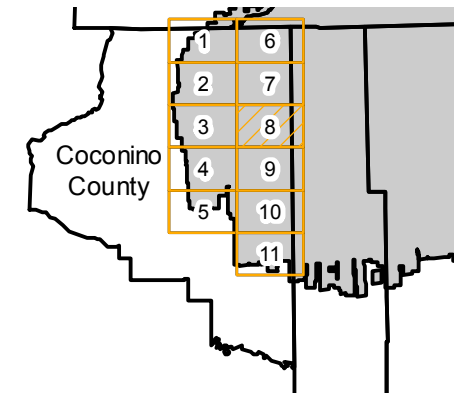
Counties: Coconino (Arizona)
 Flight date(s): 11-29-1933
 Scale: 1:31,680
 Overlap: 0-95%

Complete Metadata:
<https://www.library.ucsb.edu/src/airphotos/aerial-photography-information>

Note: Coverage of Marble Canyon, Tonalea, Tuba City, Winslow, and vicinity. Part of the imagery for this flight held as 4-frame composite format negatives. Acquired from Whittier College, January 2013. Nitrate negatives scanned April 2015.

- MIL owns frame
- MIL does not own frame

FLIGHT LOCATION



Sources: Esri, HERE, Garmin, Intermap, increment P Corp., GEBCO, USGS, FAO, NPS, NRCAN, GeoBase, IGN, Kadaster NL, Ordnance Survey, Esri, Swisstopo, © OpenStreetMap contributors, and the GIS User Community

0 3 6 12 Miles

Index to Aerial Photography
 Page 8 of 11

Scale of this index: 1:225,000

C-2847 (Coconino)

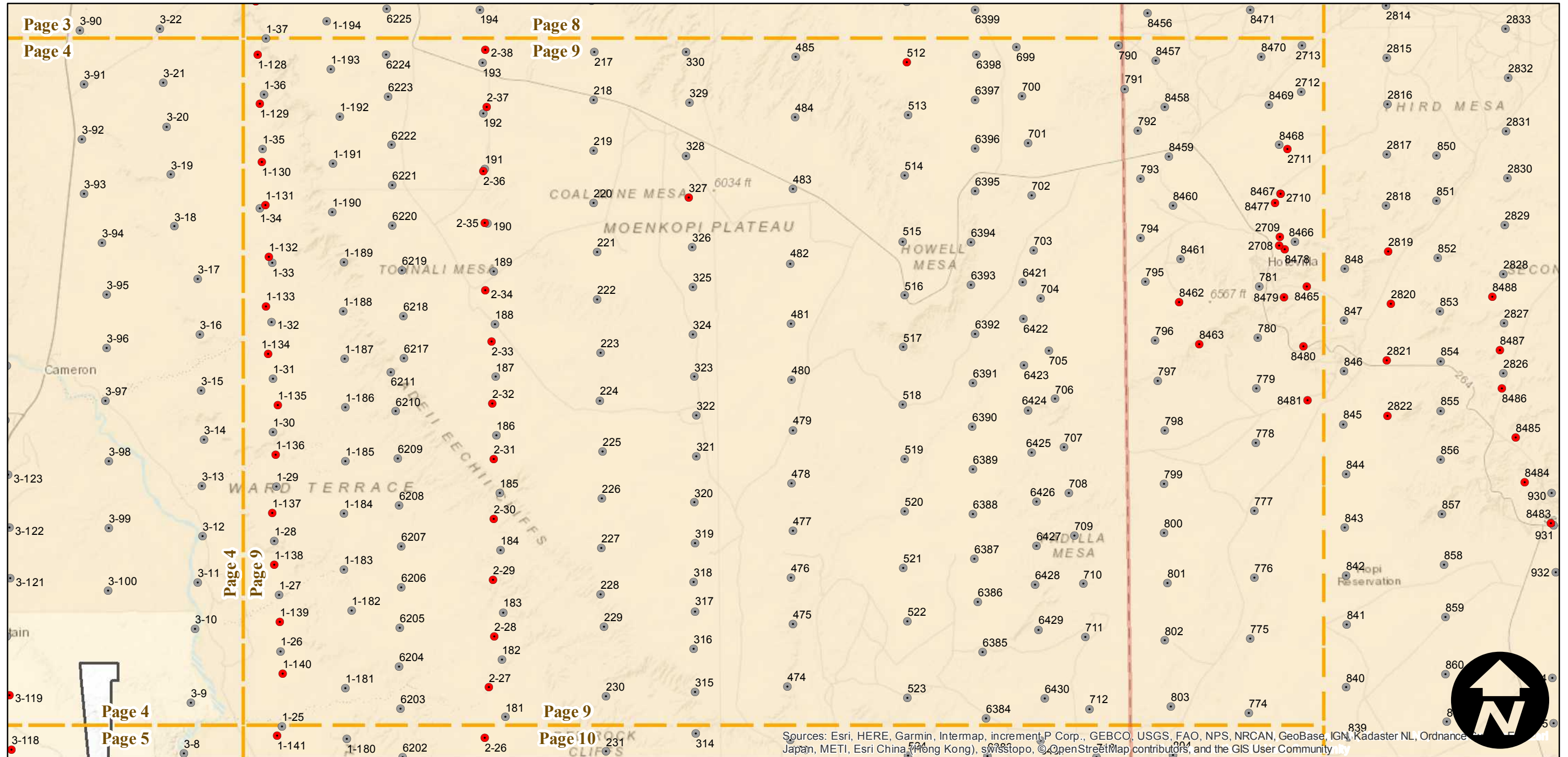
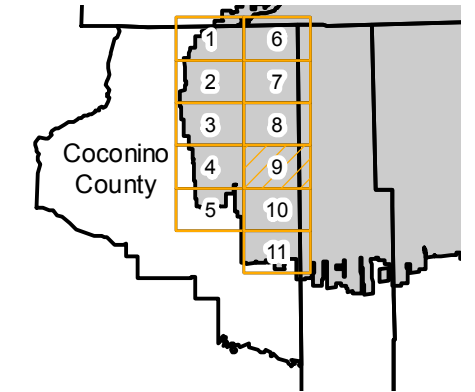
Counties: Coconino (Arizona)
 Flight date(s): 11-29-1933
 Scale: 1:31,680
 Overlap: 0-95%

Complete Metadata:
<https://www.library.ucsb.edu/src/airphotos/aerial-photography-information>

Note: Coverage of Marble Canyon, Tonalea, Tuba City, Winslow, and vicinity. Part of the imagery for this flight held as 4-frame composite format negatives. Acquired from Whittier College, January 2013. Nitrate negatives scanned April 2015.

- MIL owns frame
- MIL does not own frame

FLIGHT LOCATION



Sources: Esri, HERE, Garmin, Intermap, increment P Corp., GEBCO, USGS, FAO, NPS, NRCAN, GeoBase, IGN, Kadaster NL, Ordnance Survey, Esri Japan, METI, Esri China (Hong Kong), Swisstopo, ©OpenStreetMap contributors, and the GIS User Community

0 3 6 12 Miles

Index to Aerial Photography
 Page 9 of 11

Scale of this index: 1:225,000

C-2847 (Coconino)

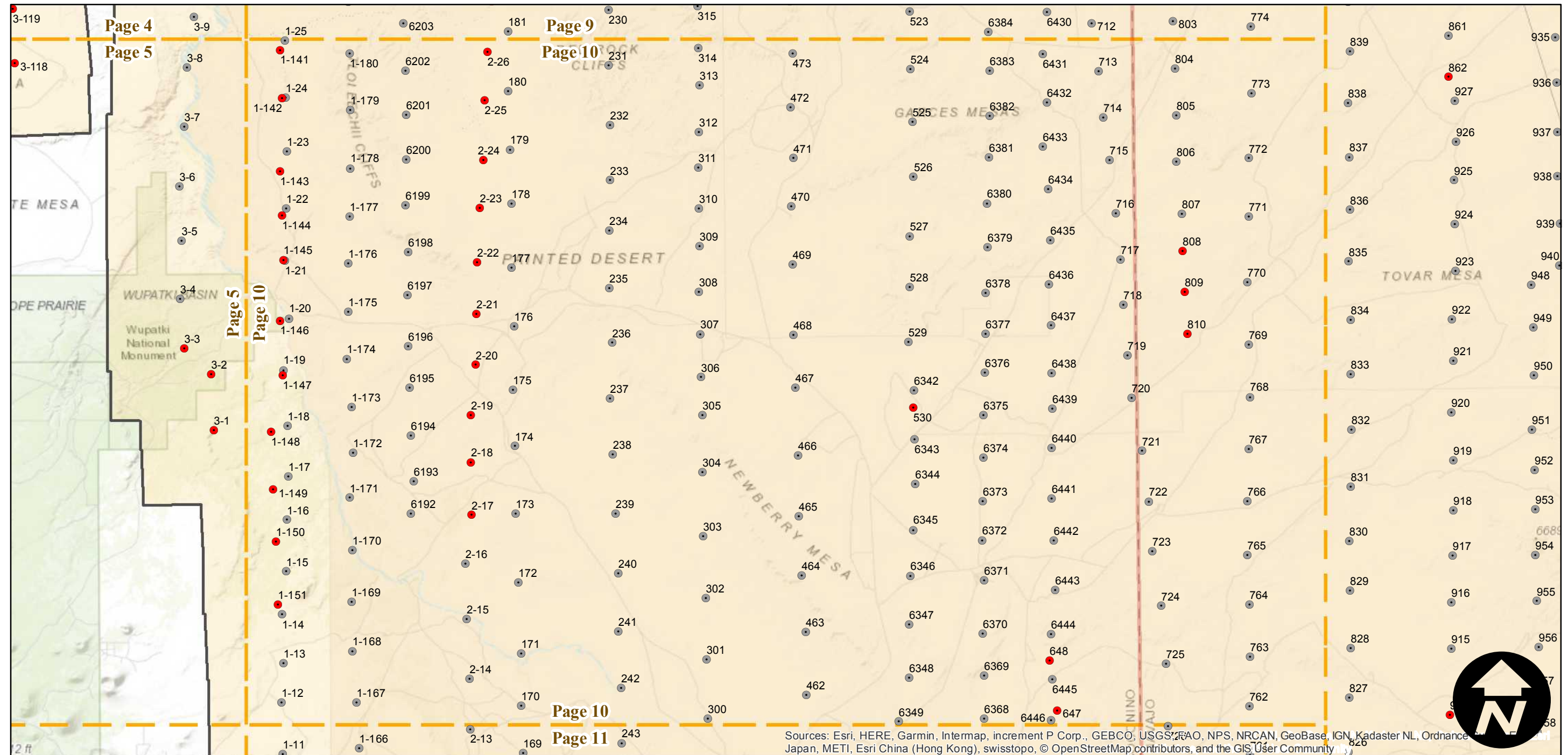
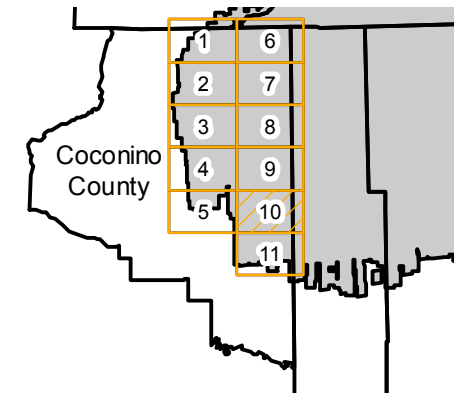
Counties: Coconino (Arizona)
Flight date(s): 11-29-1933
Scale: 1:31,680
Overlap: 0-95%

Complete Metadata:
<https://www.library.ucsb.edu/src/airphotos/aerial-photography-information>

Note: Coverage of Marble Canyon, Tonalea, Tuba City, Winslow, and vicinity. Part of the imagery for this flight held as 4-frame composite format negatives. Acquired from Whittier College, January 2013. Nitrate negatives scanned April 2015.

- MIL owns frame
- MIL does not own frame

FLIGHT LOCATION



Sources: Esri, HERE, Garmin, Intermap, increment P Corp., GEBCO, USGS, FAO, NPS, NRCAN, GeoBase, IGN, Kadaster NL, Ordnance Survey, Esri China (Hong Kong), Swisstopo, © OpenStreetMap contributors, and the GIS User Community

0 3 6 12 Miles

Index to Aerial Photography
Page 10 of 11

Scale of this index: 1:225,000

C-2847 (Coconino)

Counties: Coconino (Arizona)
 Flight date(s): 11-29-1933
 Scale: 1:31,680
 Overlap: 0-95%

Complete Metadata:
<https://www.library.ucsb.edu/src/airphotos/aerial-photography-information>

Note: Coverage of Marble Canyon, Tonalea, Tuba City, Winslow, and vicinity. Part of the imagery for this flight held as 4-frame composite format negatives. Acquired from Whittier College, January 2013. Nitrate negatives scanned April 2015.

- MIL owns frame
- MIL does not own frame

FLIGHT LOCATION

