

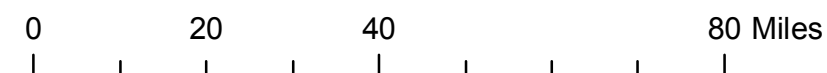
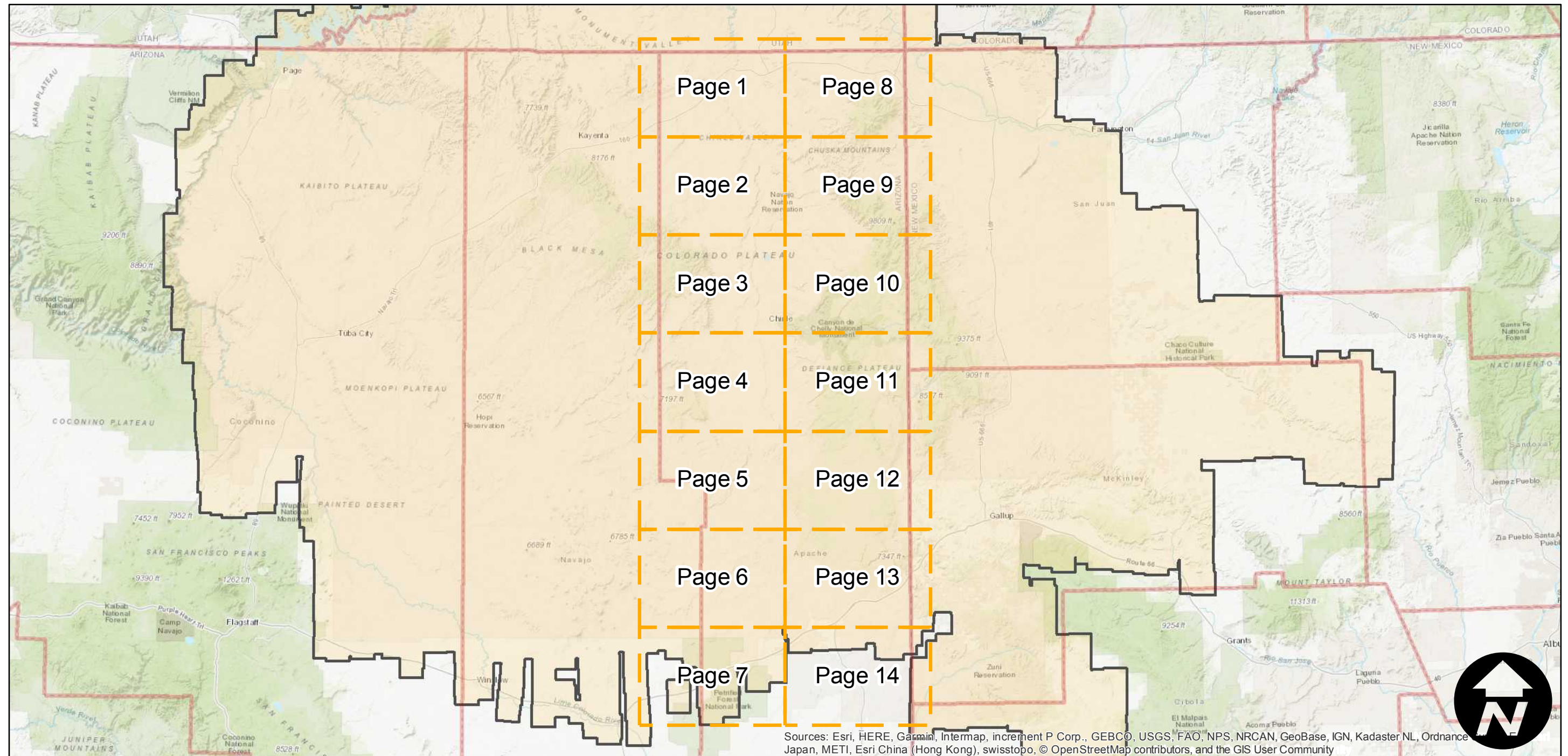
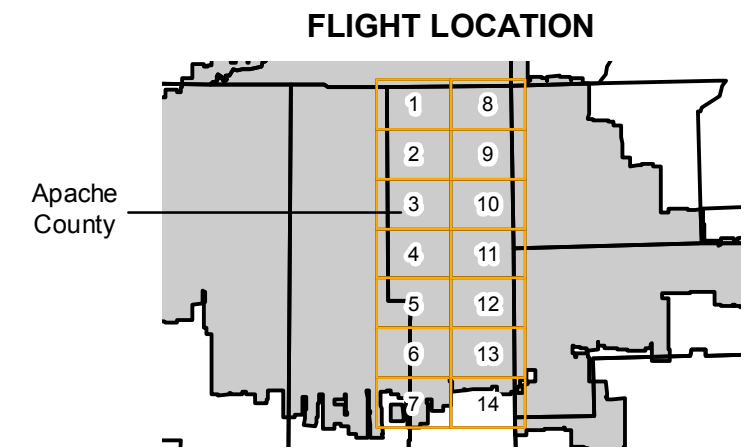
# C-2847 (Apache)

Counties: Apache (Arizona)  
 Flight date(s): 11-29-1933  
 Scale: 1:31,680  
 Overlap: 0-95%

Complete Metadata:  
<https://www.library.ucsb.edu/src/airphotos/aerial-photography-information>

Note: Coverage of Chambers, Lukachukai, Pastora Peak, Snake Flat, and vicinity. Part of the imagery for this flight held as 4-frame composite format negatives. Acquired from Whittier College, January 2013. Nitrate negatives scanned April 2015.

- MIL owns frame
- MIL does not own frame



Index to Aerial Photography  
 Page Key

Scale of this index: 1:1,410,000





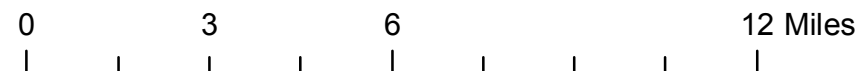
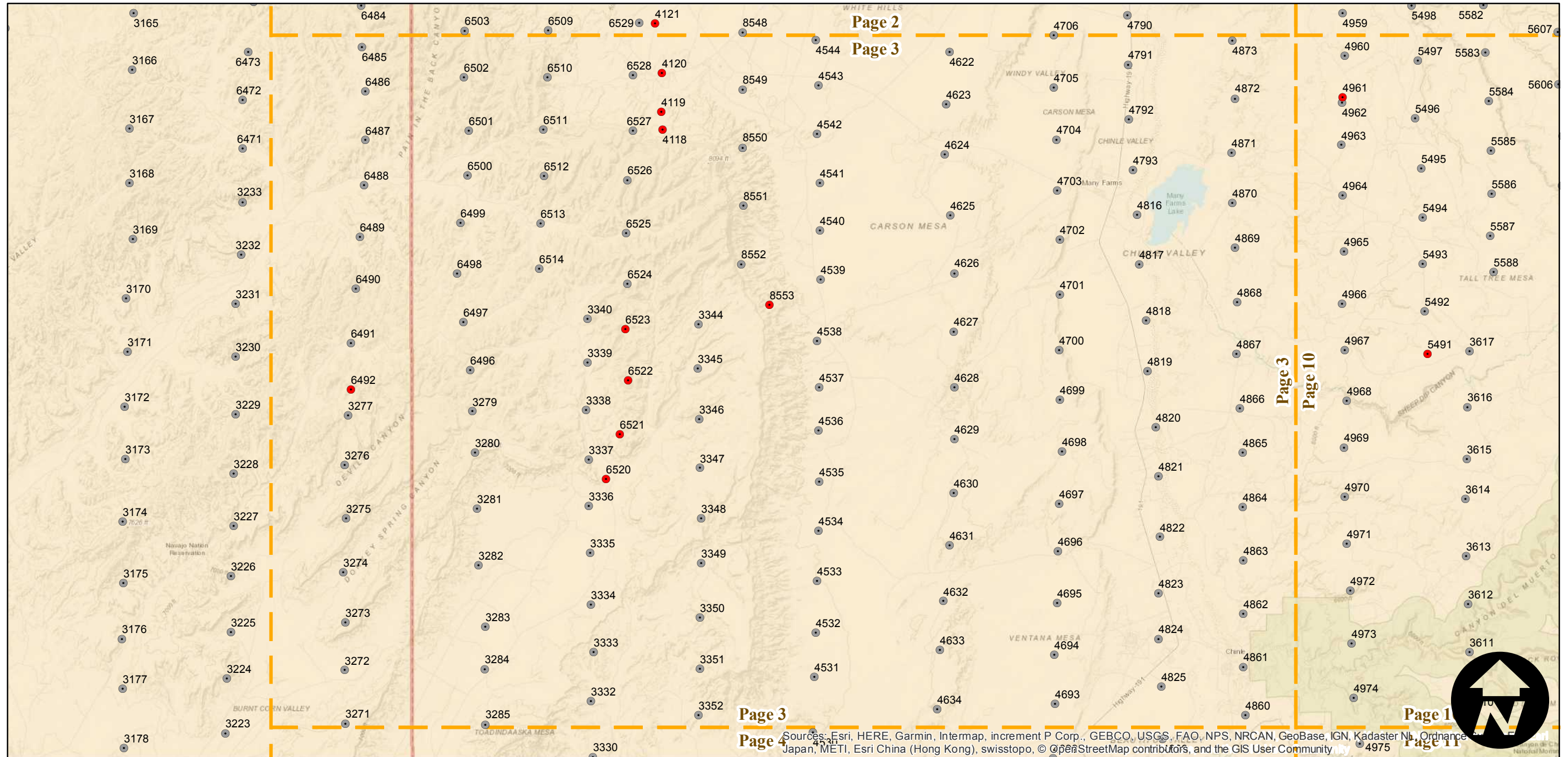
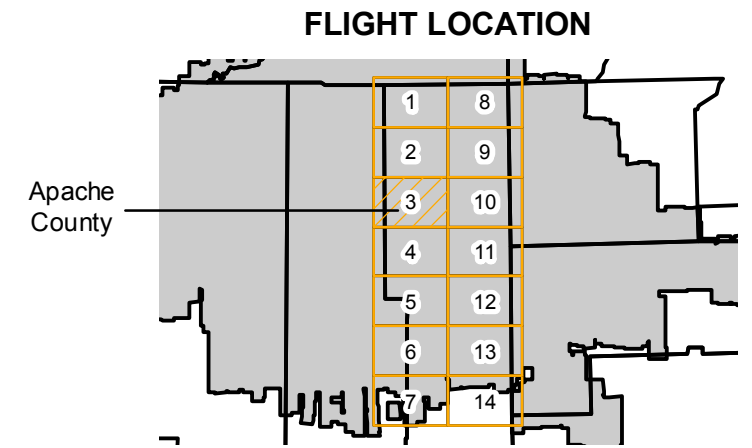
# C-2847 (Apache)

Counties: Apache (Arizona)  
 Flight date(s): 11-29-1933  
 Scale: 1:31,680  
 Overlap: 0-95%

Complete Metadata:  
<https://www.library.ucsb.edu/src/airphotos/aerial-photography-information>

Note: Coverage of Chambers, Lukachukai, Pastora Peak, Snake Flat, and vicinity. Part of the imagery for this flight held as 4-frame composite format negatives. Acquired from Whittier College, January 2013. Nitrate negatives scanned April 2015.

- MIL owns frame
- MIL does not own frame



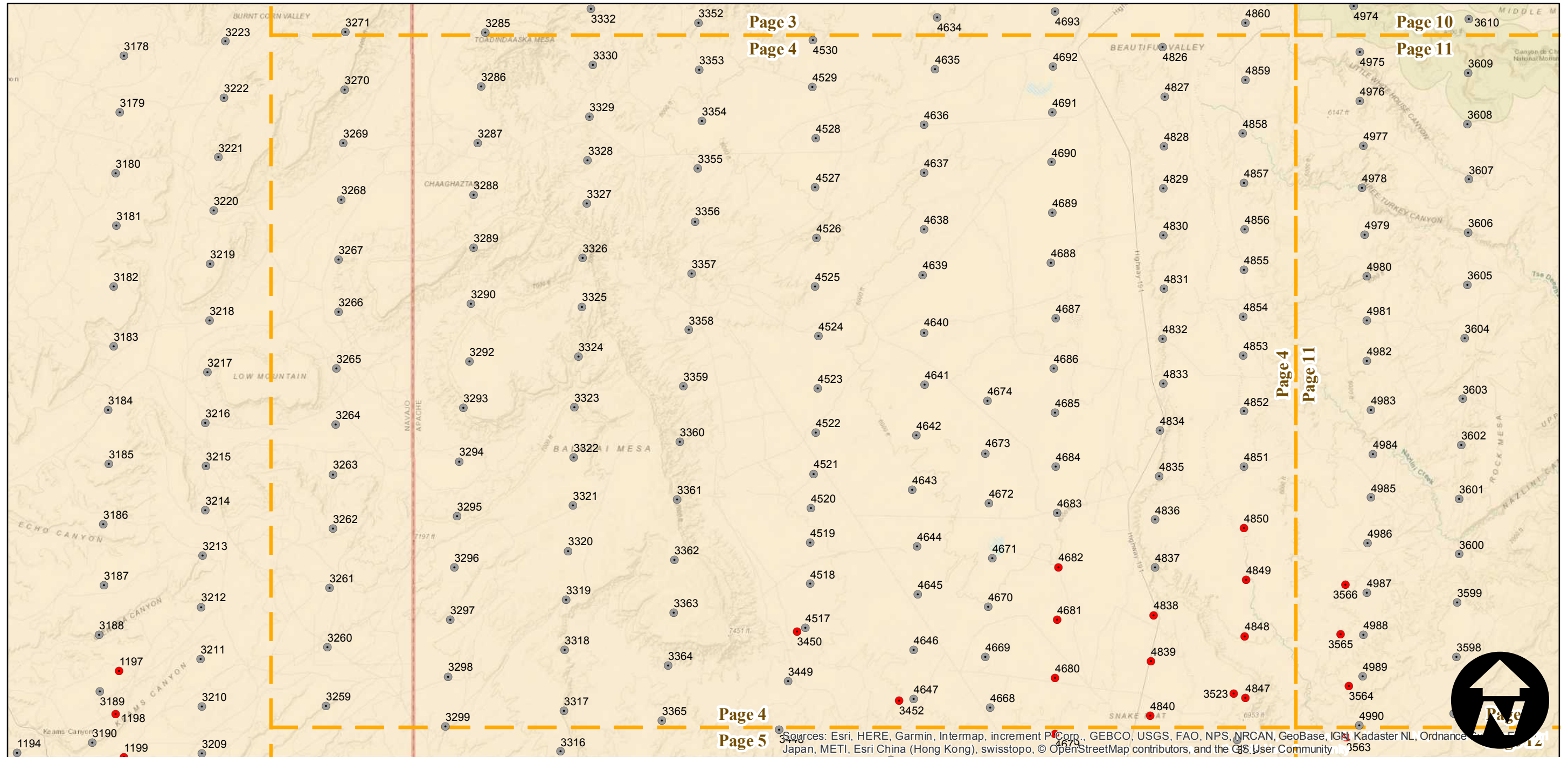
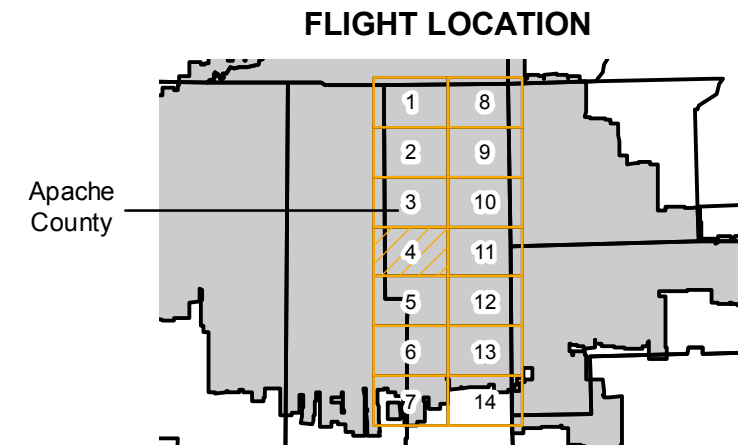
# C-2847 (Apache)

Counties: Apache (Arizona)  
 Flight date(s): 11-29-1933  
 Scale: 1:31,680  
 Overlap: 0-95%

Complete Metadata:  
<https://www.library.ucsb.edu/src/airphotos/aerial-photography-information>

Note: Coverage of Chambers, Lukachukai, Pastora Peak, Snake Flat, and vicinity. Part of the imagery for this flight held as 4-frame composite format negatives. Acquired from Whittier College, January 2013. Nitrate negatives scanned April 2015.

- MIL owns frame
- MIL does not own frame



Sources: Esri, HERE, Garmin, Intermap, increment P Corp., GEBCO, USGS, FAO, NPS, NRCAN, GeoBase, IGN, Kadaster NL, Ordnance Survey, Esri Japan, METI, Esri China (Hong Kong), swisstopo, © OpenStreetMap contributors, and the GIS User Community

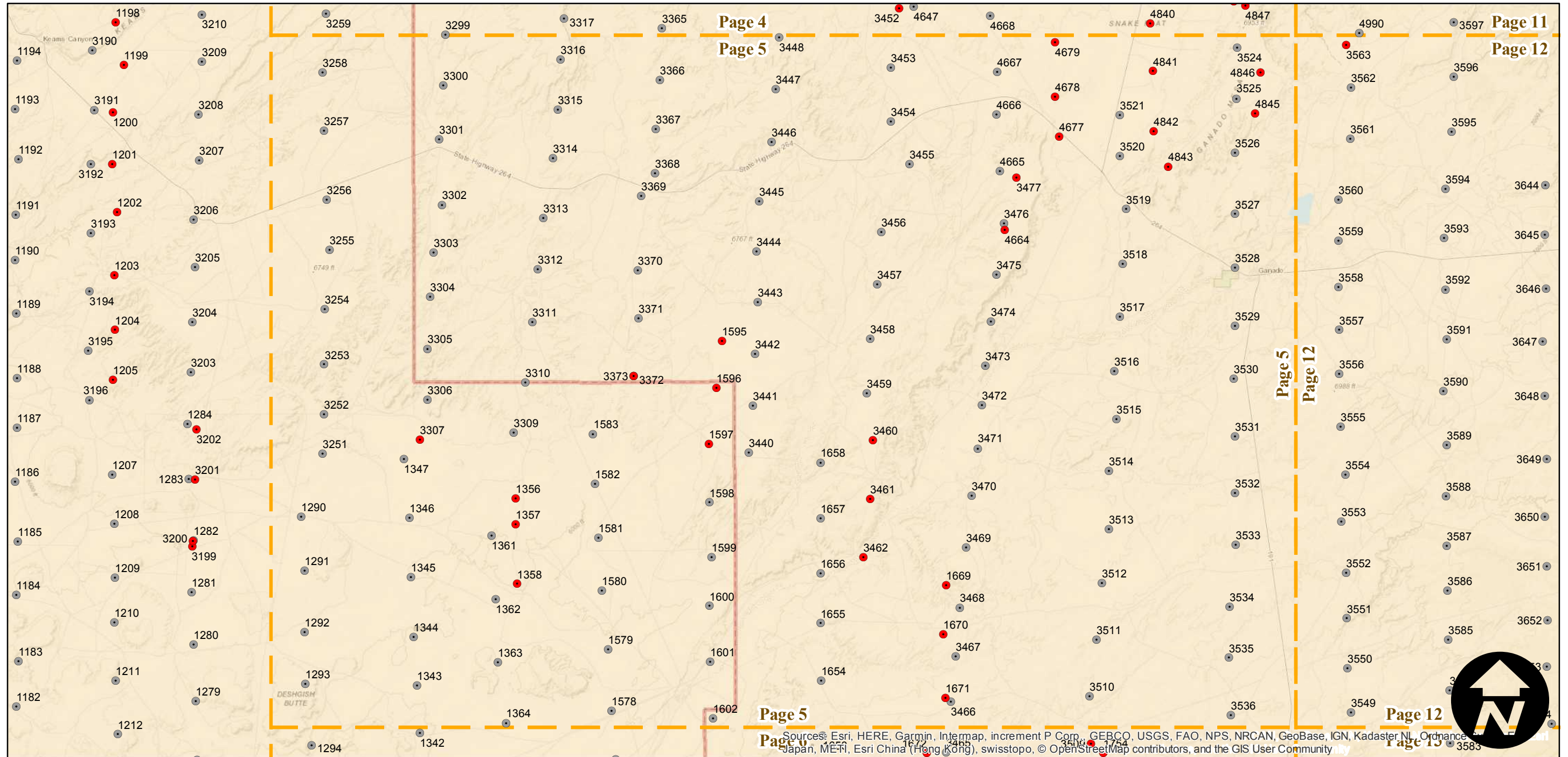
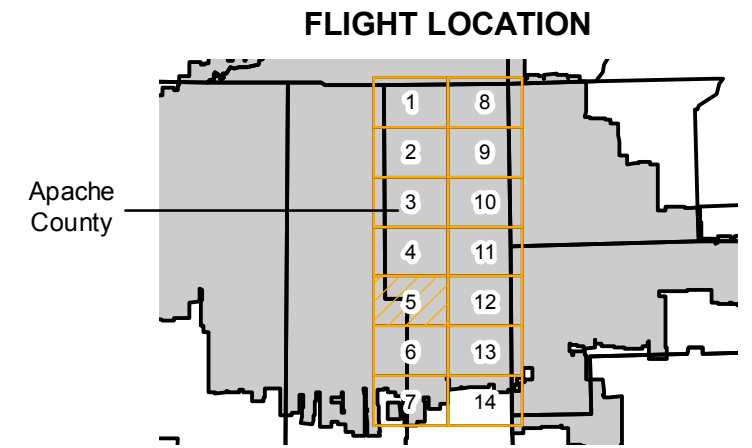
# C-2847 (Apache)

Counties: Apache (Arizona)  
 Flight date(s): 11-29-1933  
 Scale: 1:31,680  
 Overlap: 0-95%

Complete Metadata:  
<https://www.library.ucsb.edu/src/airphotos/aerial-photography-information>

Note: Coverage of Chambers, Lukachukai, Pastora Peak, Snake Flat, and vicinity. Part of the imagery for this flight held as 4-frame composite format negatives. Acquired from Whittier College, January 2013. Nitrate negatives scanned April 2015.

- MIL owns frame
- MIL does not own frame



Sources: Esri, HERE, Garmin, Intermap, increment P Corp., GEBCO, USGS, FAO, NPS, NRCAN, GeoBase, IGN, Kadaster NL, Ordnance Survey, Esri, Swisstopo, Swisstopo, © OpenStreetMap contributors, and the GIS User Community

0 3 6 12 Miles

Index to Aerial Photography  
 Page 5 of 14

Scale of this index: 1:200,000

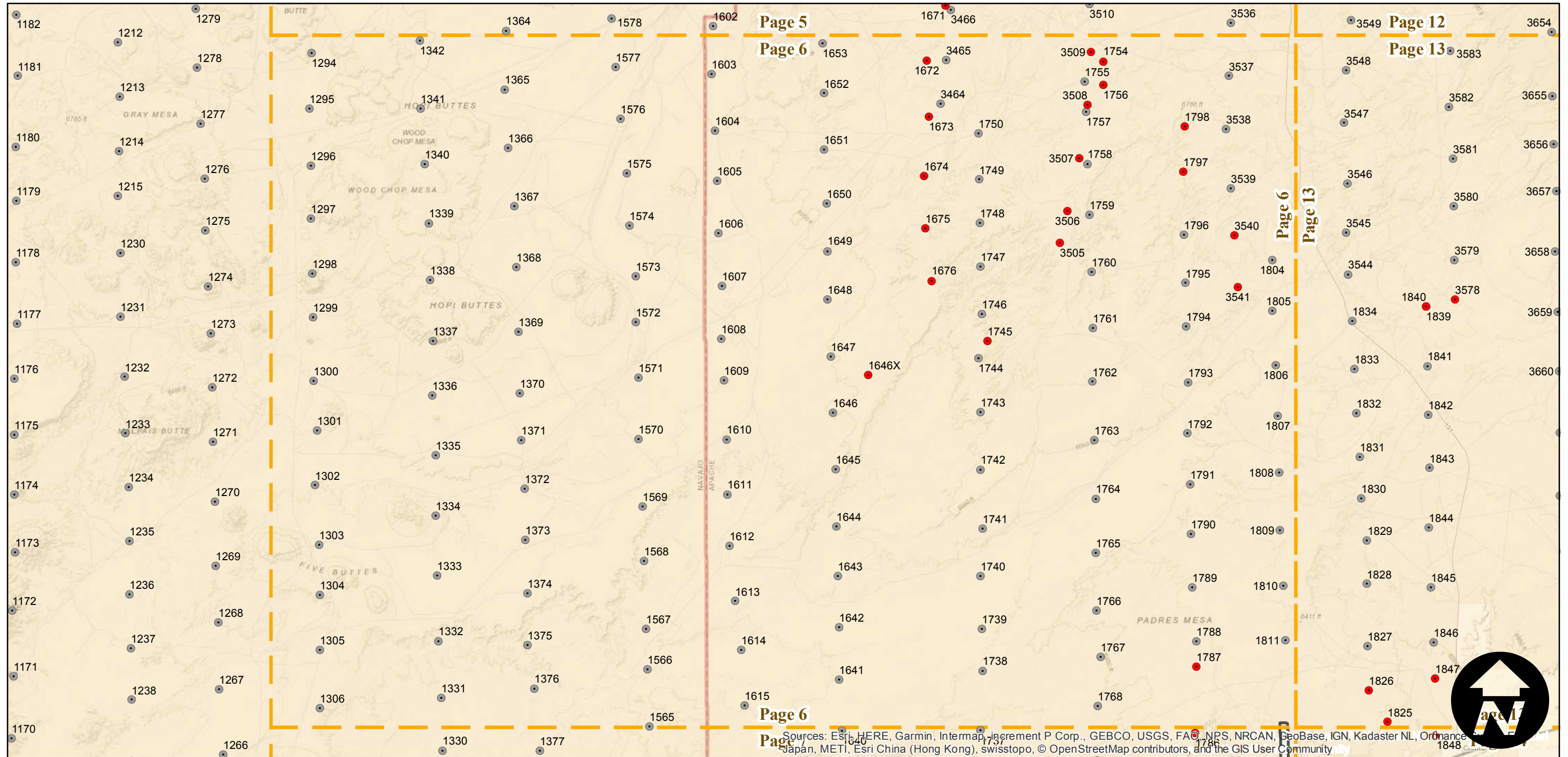
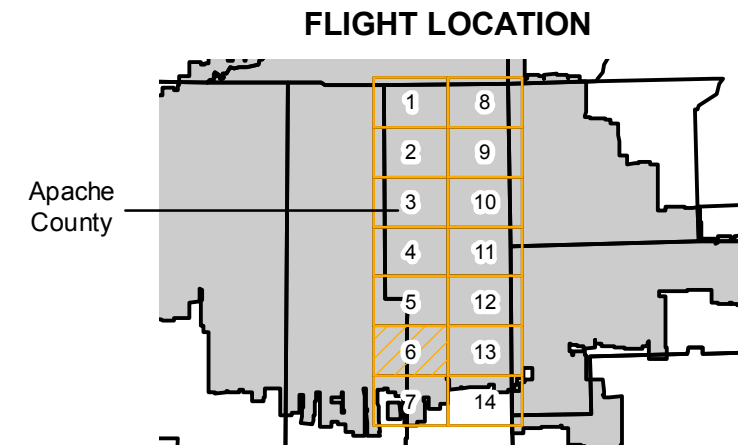
# C-2847 (Apache)

Counties: Apache (Arizona)  
 Flight date(s): 11-29-1933  
 Scale: 1:31,680  
 Overlap: 0-95%

Complete Metadata:  
<https://www.library.ucsb.edu/src/airphotos/aerial-photography-information>

Note: Coverage of Chambers, Lukachukai, Pastora Peak, Snake Flat, and vicinity. Part of the imagery for this flight held as 4-frame composite format negatives. Acquired from Whittier College, January 2013. Nitrate negatives scanned April 2015.

- MIL owns frame
- MIL does not own frame



Sources: Esri, HERE, Garmin, Intermap, increment P Corp., GEBCO, USGS, FAO, NPS, NRCAN, GeoBase, IGN, Kadaster NL, Ordnance Survey, Esri Japan, METI, Esri China (Hong Kong), swisstopo, © OpenStreetMap contributors, and the GIS User Community

0 3 6 12 Miles

Index to Aerial Photography  
 Page 6 of 14

Scale of this index: 1:200,000

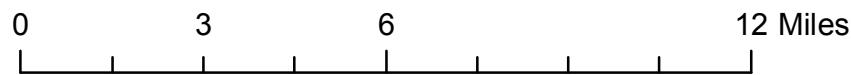
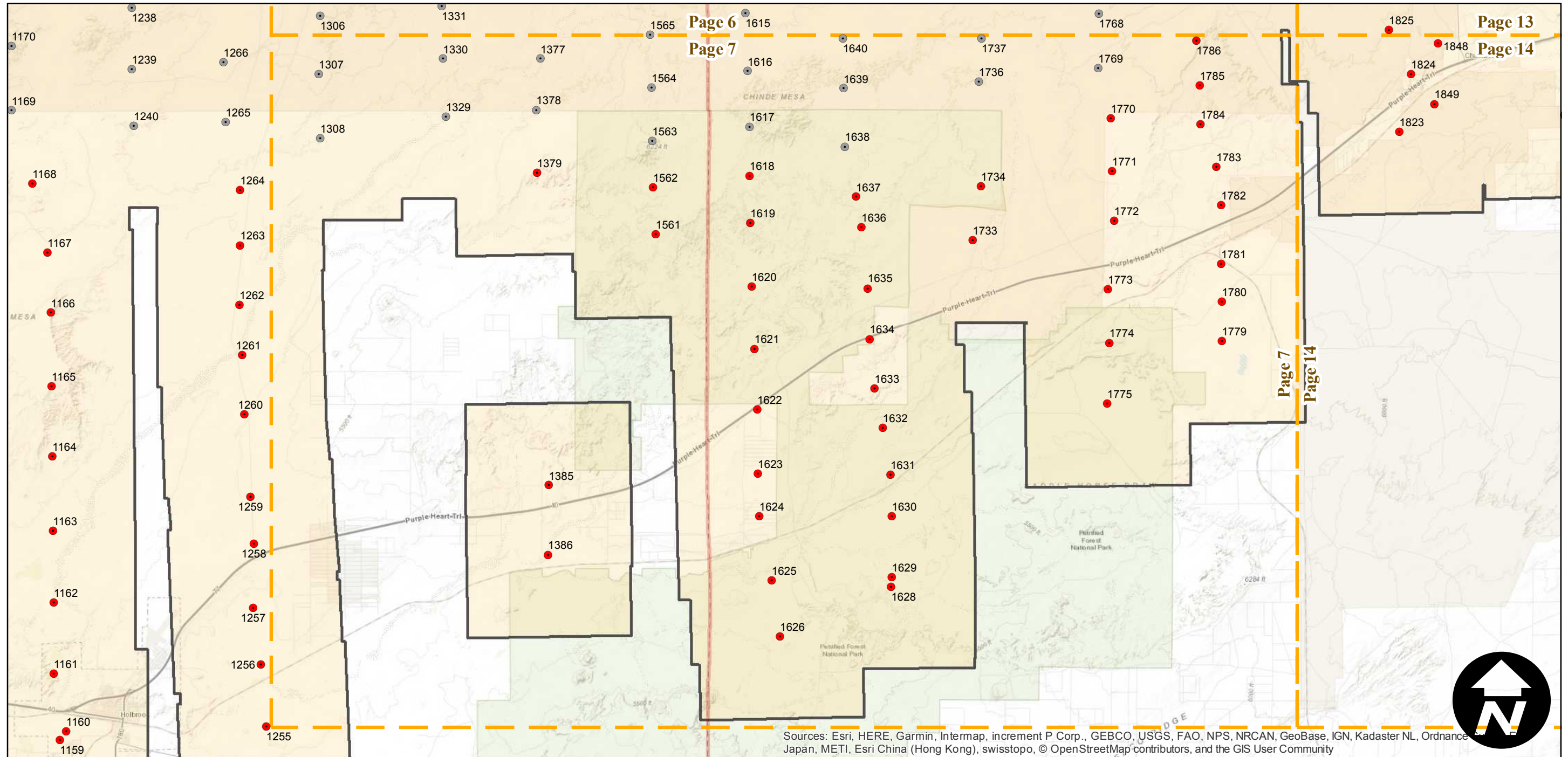
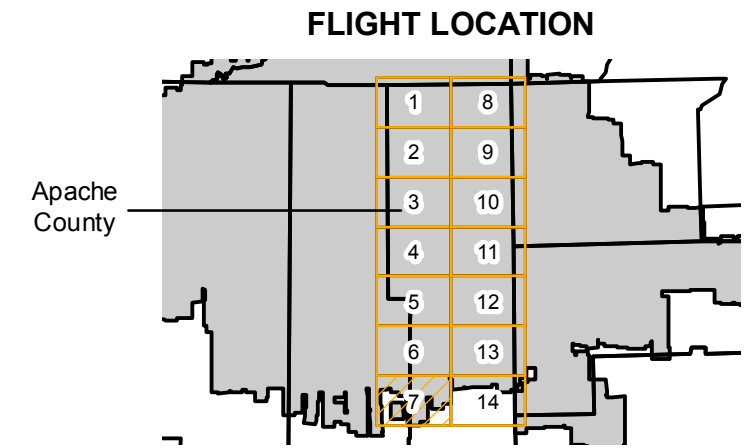
# C-2847 (Apache)

Counties: Apache (Arizona)  
 Flight date(s): 11-29-1933  
 Scale: 1:31,680  
 Overlap: 0-95%

Complete Metadata:  
<https://www.library.ucsb.edu/src/airphotos/aerial-photography-information>

Note: Coverage of Chambers, Lukachukai, Pastora Peak, Snake Flat, and vicinity. Part of the imagery for this flight held as 4-frame composite format negatives. Acquired from Whittier College, January 2013. Nitrate negatives scanned April 2015.

- MIL owns frame
- MIL does not own frame



Sources: Esri, HERE, Garmin, Intermap, increment P Corp., GEBCO, USGS, FAO, NPS, NRCAN, GeoBase, IGN, Kadaster NL, Ordnance Survey, Esri Japan, METI, Esri China (Hong Kong), swisstopo, © OpenStreetMap contributors, and the GIS User Community





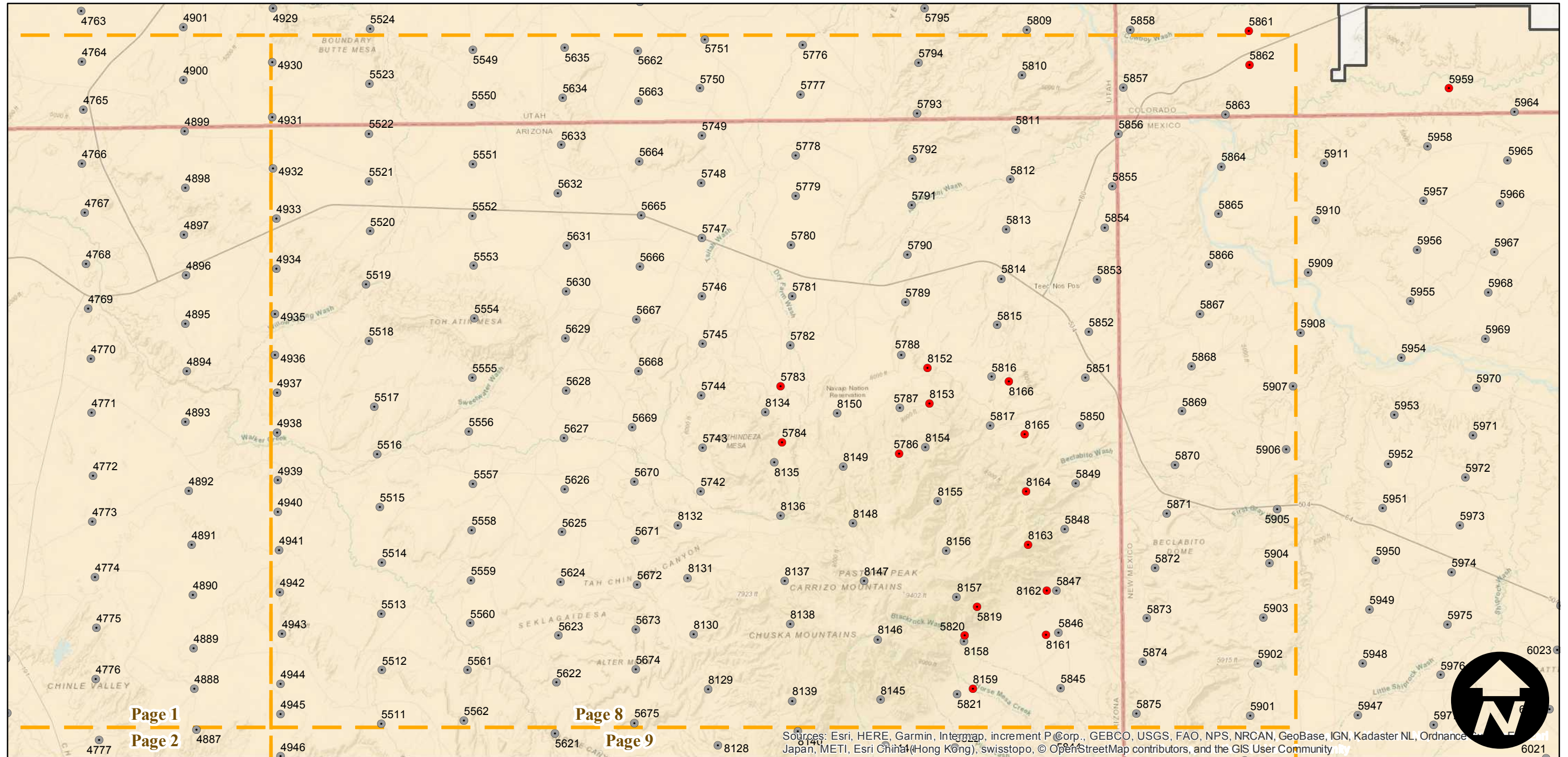
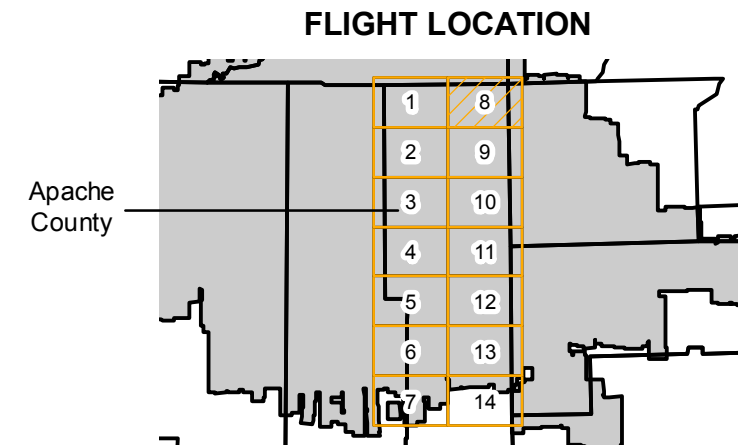
# C-2847 (Apache)

Counties: Apache (Arizona)  
 Flight date(s): 11-29-1933  
 Scale: 1:31,680  
 Overlap: 0-95%

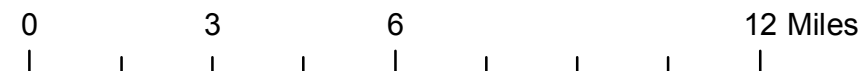
Complete Metadata:  
<https://www.library.ucsb.edu/src/airphotos/aerial-photography-information>

Note: Coverage of Chambers, Lukachukai, Pastora Peak, Snake Flat, and vicinity. Part of the imagery for this flight held as 4-frame composite format negatives. Acquired from Whittier College, January 2013. Nitrate negatives scanned April 2015.

- MIL owns frame
- MIL does not own frame



Sources: Esri, HERE, Garmin, Intermap, increment P Corp., GEBCO, USGS, FAO, NPS, NRCAN, GeoBase, IGN, Kadaster NL, Ordnance Survey, Esri Japan, METI, Esri China (Hong Kong), swisstopo, © OpenStreetMap contributors, and the GIS User Community



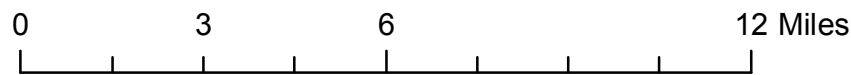
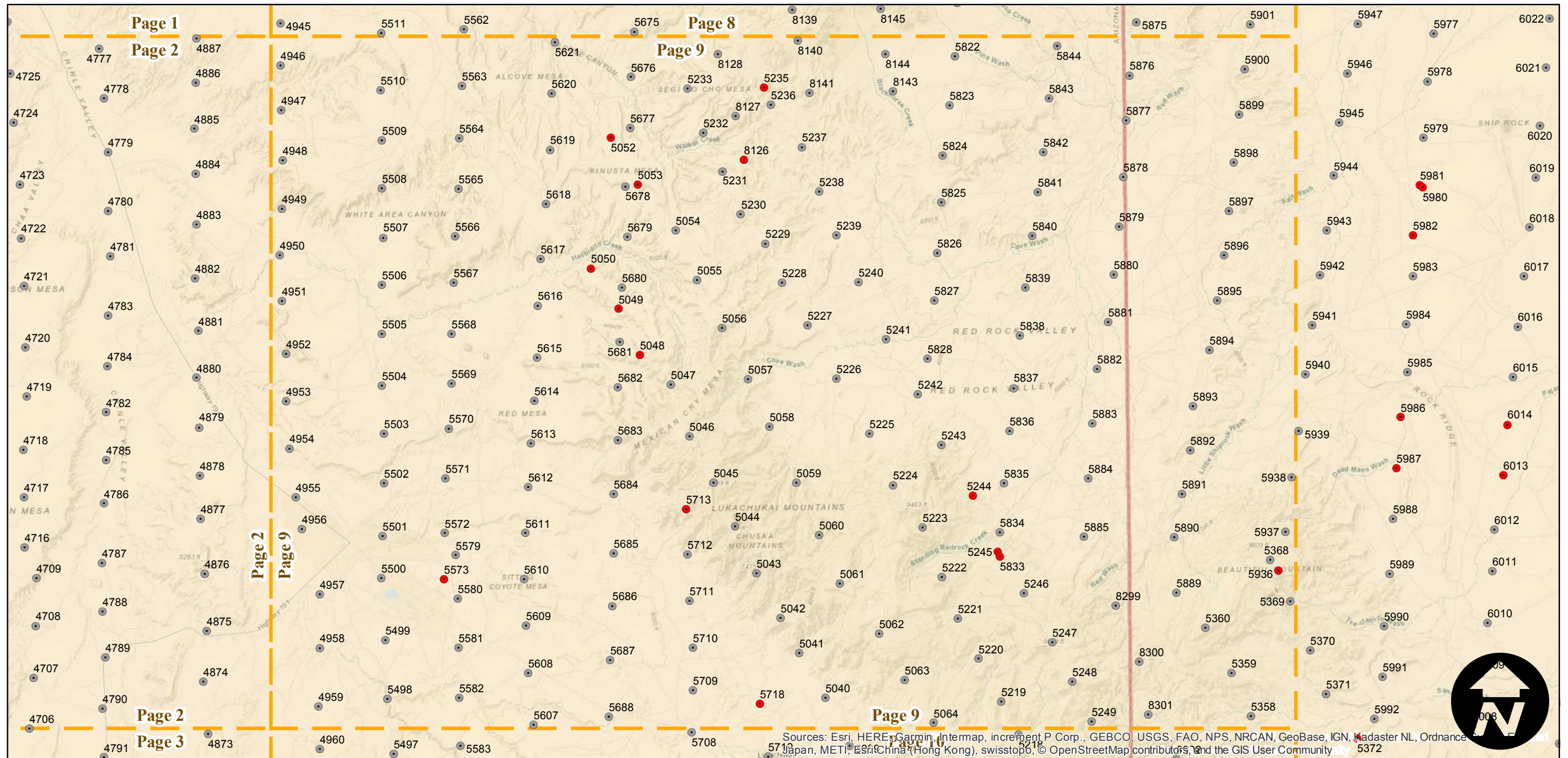
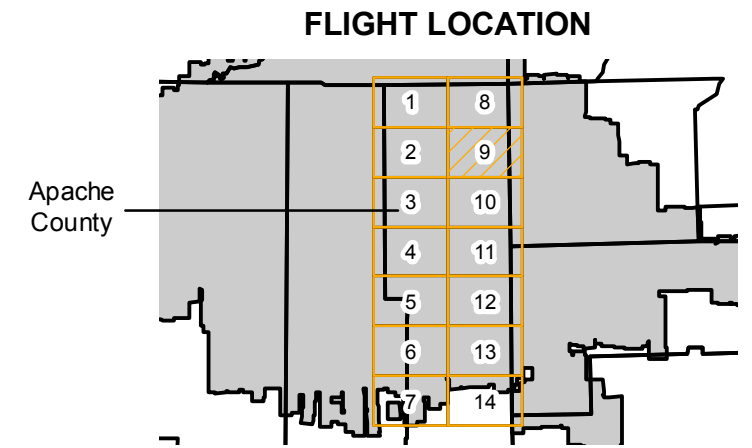
# C-2847 (Apache)

Counties: Apache (Arizona)  
 Flight date(s): 11-29-1933  
 Scale: 1:31,680  
 Overlap: 0-95%

Complete Metadata:  
<https://www.library.ucsb.edu/src/airphotos/aerial-photography-information>

Note: Coverage of Chambers, Lukachukai, Pastora Peak, Snake Flat, and vicinity. Part of the imagery for this flight held as 4-frame composite format negatives. Acquired from Whittier College, January 2013. Nitrate negatives scanned April 2015.

- MIL owns frame
- MIL does not own frame



Sources: Esri, HERE, Garmin, Intermap, increment P Corp., GEBCO, USGS, FAO, NPS, NRCAN, GeoBase, IGN, Kadaster NL, Ordnance Survey, Esri Japan, METI, Esri China (Hong Kong), swisstopo, © OpenStreetMap contributors, and the GIS User Community



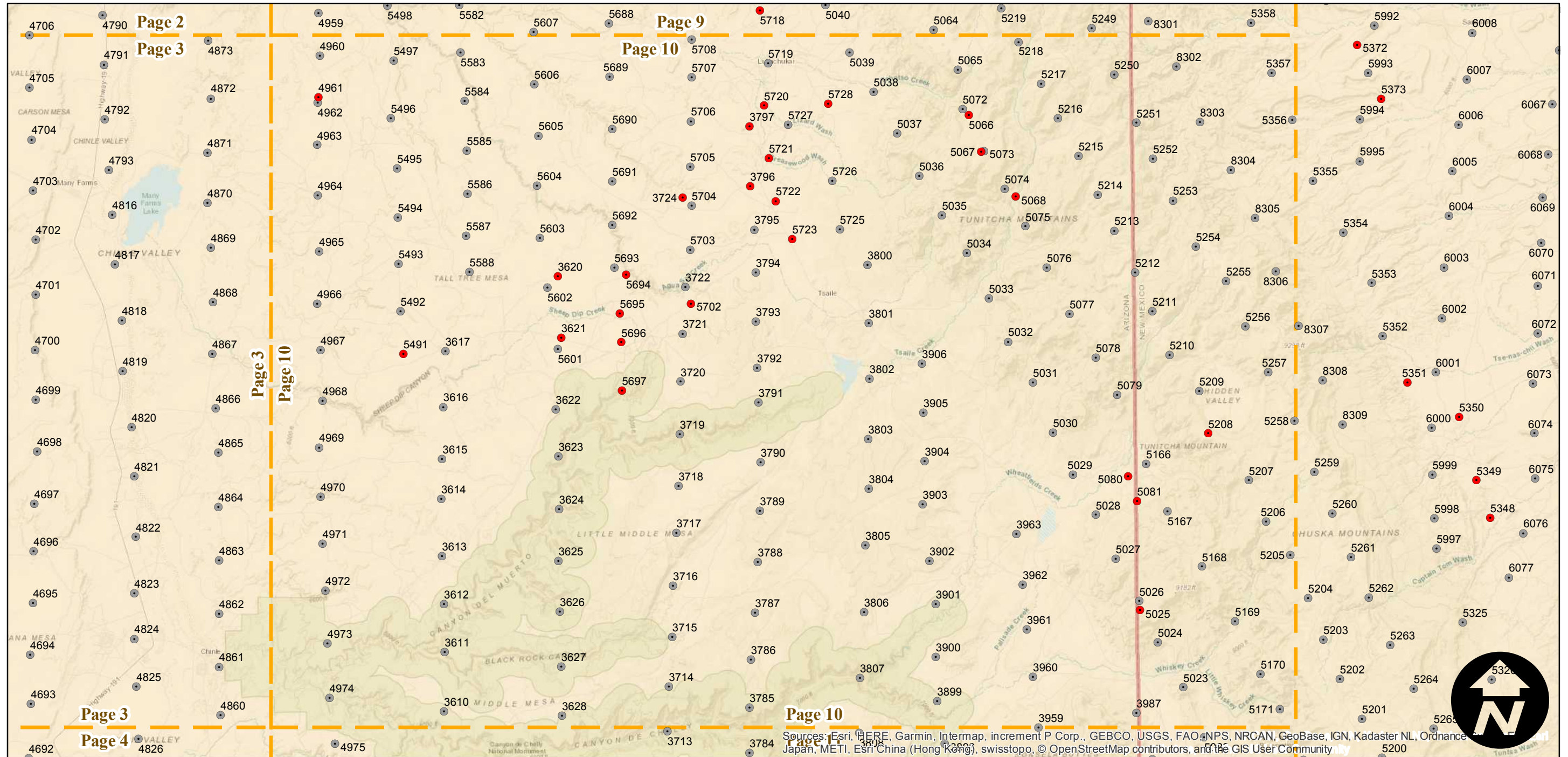
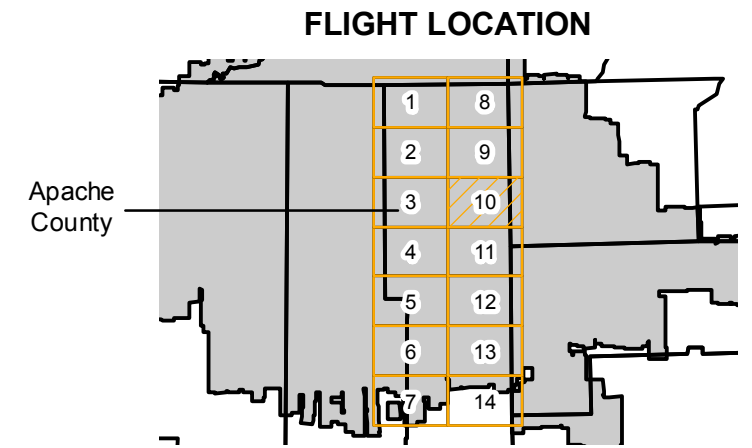
# C-2847 (Apache)

Counties: Apache (Arizona)  
 Flight date(s): 11-29-1933  
 Scale: 1:31,680  
 Overlap: 0-95%

Complete Metadata:  
<https://www.library.ucsb.edu/src/airphotos/aerial-photography-information>

Note: Coverage of Chambers, Lukachukai, Pastora Peak, Snake Flat, and vicinity. Part of the imagery for this flight held as 4-frame composite format negatives. Acquired from Whittier College, January 2013. Nitrate negatives scanned April 2015.

- MIL owns frame
- MIL does not own frame



Sources: Esri, HERE, Garmin, Intermap, increment P Corp., GEBCO, USGS, FAO, NPS, NRCAN, GeoBase, IGN, Kadaster NL, Ordnance Survey, Esri, Japan, METI, Esri China (Hong Kong), swisstopo, © OpenStreetMap contributors, and the GIS User Community

0 3 6 12 Miles

Index to Aerial Photography  
 Page 10 of 14

Scale of this index: 1:200,000



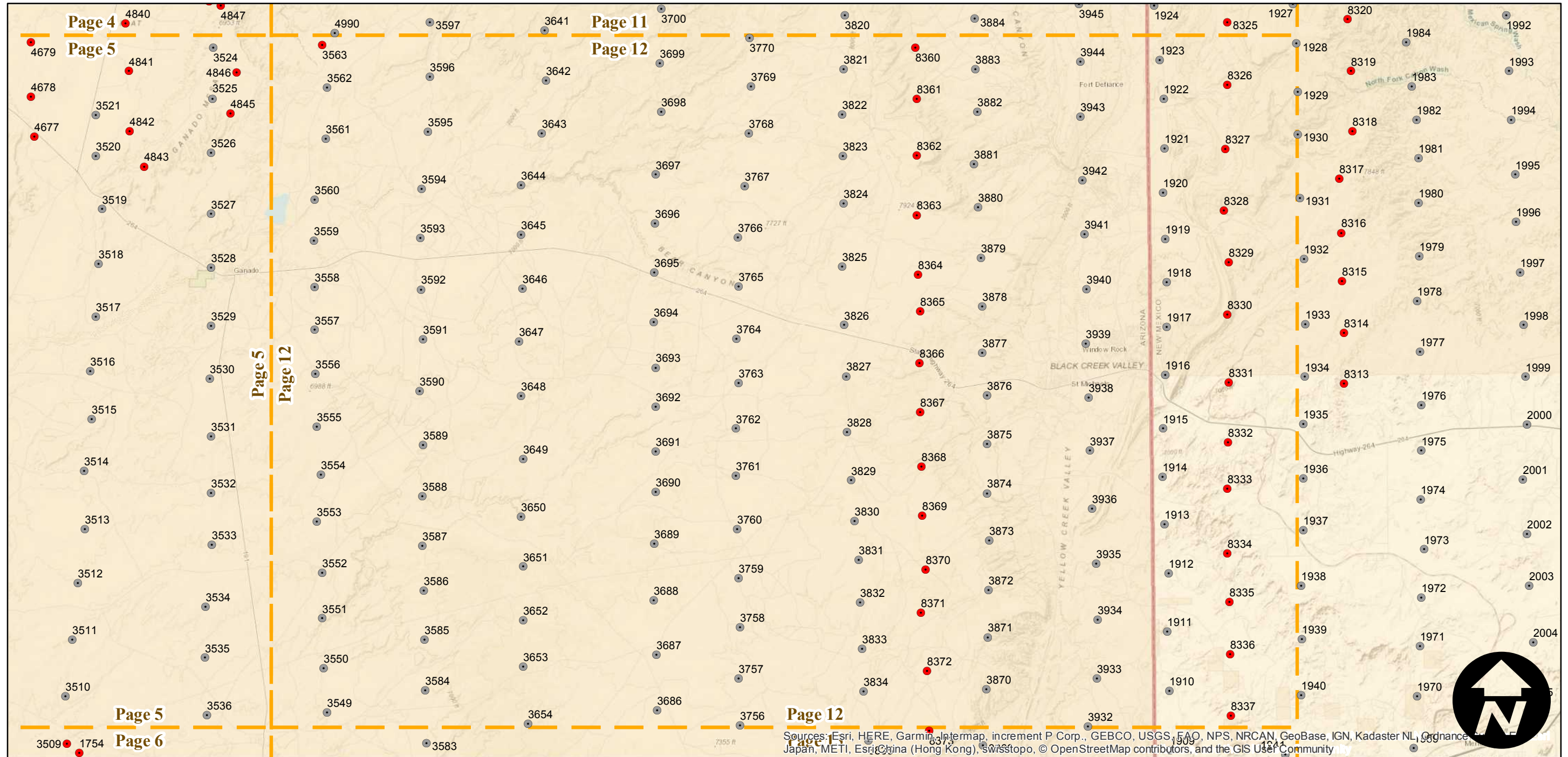
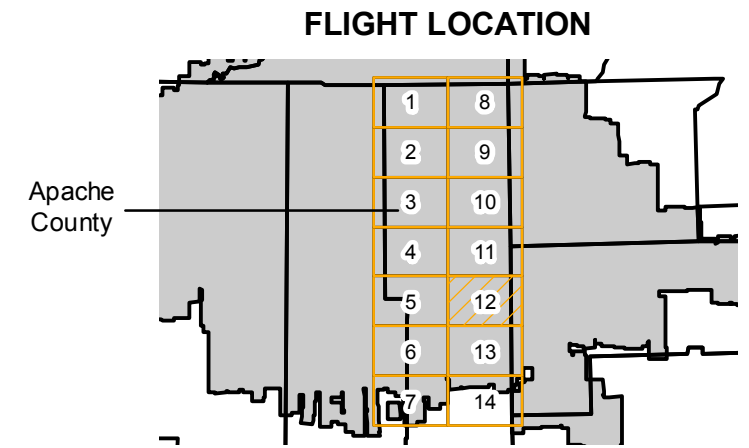
# C-2847 (Apache)

Counties: Apache (Arizona)  
 Flight date(s): 11-29-1933  
 Scale: 1:31,680  
 Overlap: 0-95%

Complete Metadata:  
<https://www.library.ucsb.edu/src/airphotos/aerial-photography-information>

Note: Coverage of Chambers, Lukachukai, Pastora Peak, Snake Flat, and vicinity. Part of the imagery for this flight held as 4-frame composite format negatives. Acquired from Whittier College, January 2013. Nitrate negatives scanned April 2015.

- MIL owns frame
- MIL does not own frame



Sources: Esri, HERE, Garmin, Intermap, increment P Corp., GEBCO, USGS, FAO, NPS, NRCAN, GeoBase, IGN, Kadaster NL, Ordnance Survey, Esri, Swisstopo, © OpenStreetMap contributors, and the GIS User Community

0 3 6 12 Miles

Index to Aerial Photography  
 Page 12 of 14

Scale of this index: 1:200,000



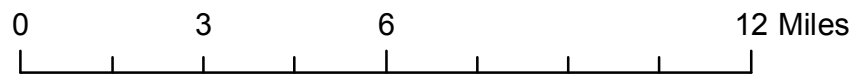
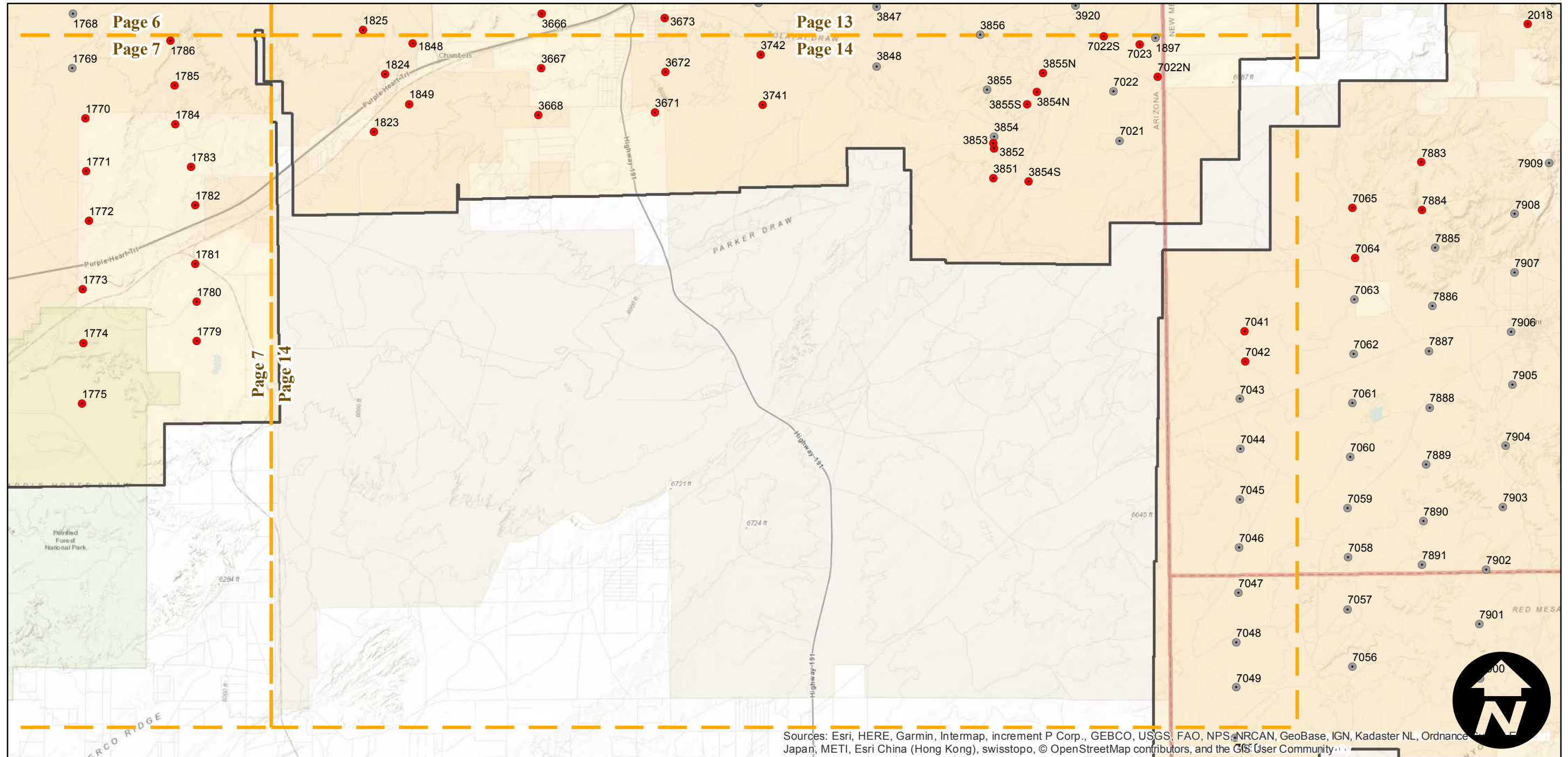
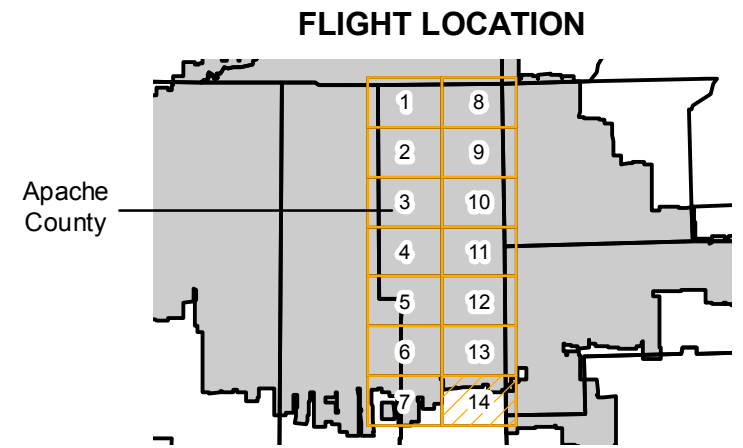
# C-2847 (Apache)

Counties: Apache (Arizona)  
 Flight date(s): 11-29-1933  
 Scale: 1:31,680  
 Overlap: 0-95%

Complete Metadata:  
<https://www.library.ucsb.edu/src/airphotos/aerial-photography-information>

Note: Coverage of Chambers, Lukachukai, Pastora Peak, Snake Flat, and vicinity. Part of the imagery for this flight held as 4-frame composite format negatives. Acquired from Whittier College, January 2013. Nitrate negatives scanned April 2015.

- MIL owns frame
- MIL does not own frame



Sources: Esri, HERE, Garmin, Intermap, increment P Corp., GEBCO, USGS, FAO, NPS, NRCAN, GeoBase, IGN, Kadaster NL, Ordnance Survey, Esri Japan, METI, Esri China (Hong Kong), swisstopo, © OpenStreetMap contributors, and the GIS User Community