

C-278-Area-2

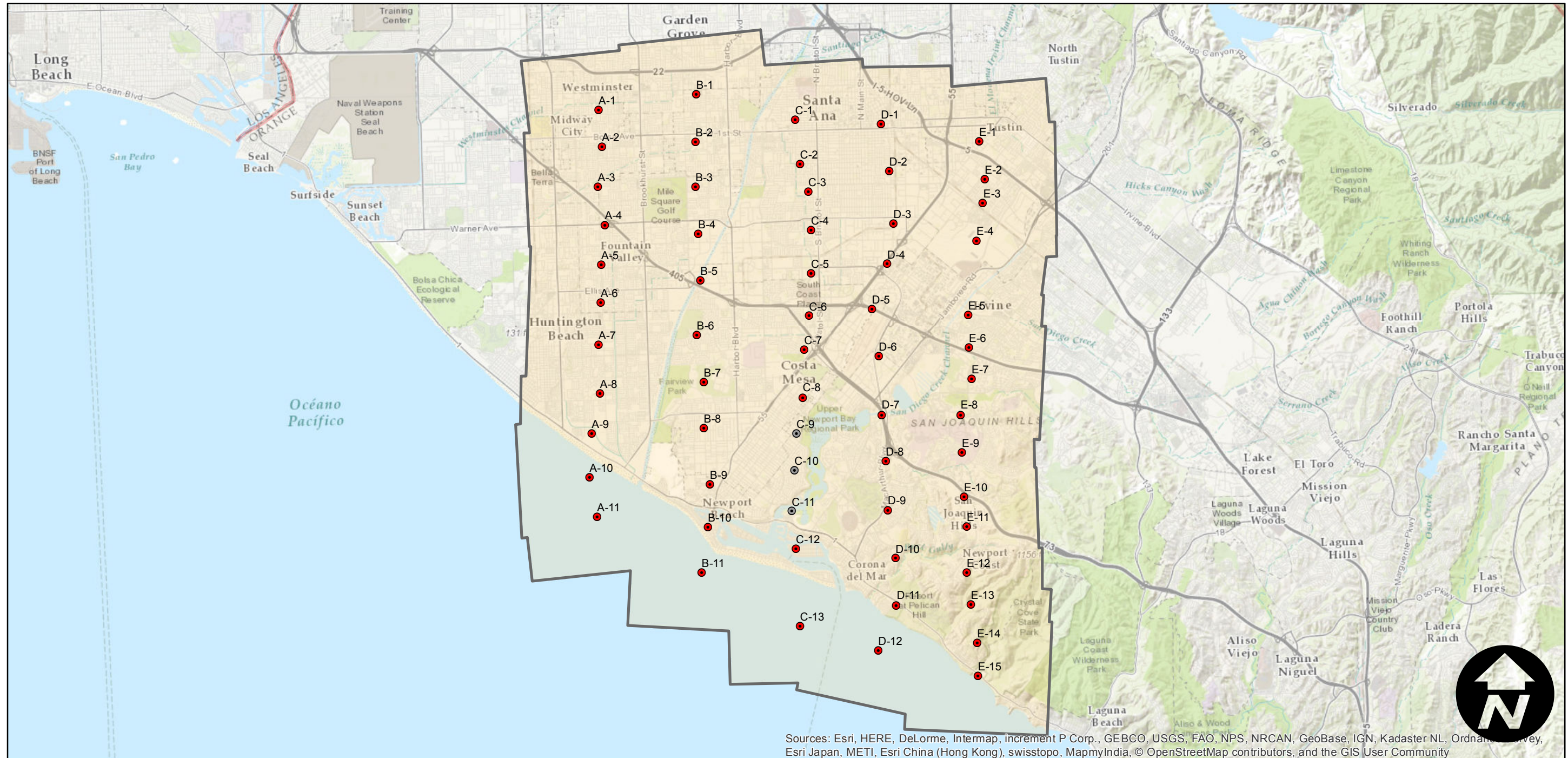
Counties: Orange
Flight date(s): 10-01-1928 to 10-31-1928
Scale: 1:24,000
Overlap: 60%

Complete Metadata:
<http://www.library.ucsb.edu/mil/aerial-photography-tools>

Note: Santa Ana to Newport Beach. Flight previously cataloged as C-278B. Copy negatives acquired from Teledyne, Inc. (1986) reproduced from original nitrate film. Prints acquired from Whittier College, January 2013.

- MIL owns frame
- MIL does not own frame

FLIGHT LOCATION



Sources: Esri, HERE, DeLorme, Intermap, increment P Corp., GEBCO, USGS, FAO, NPS, NRCAN, GeoBase, IGN, Kadaster NL, Ordnance Survey, Esri Japan, METI, Esri China (Hong Kong), swisstopo, MapmyIndia, © OpenStreetMap contributors, and the GIS User Community

