

# C-278-Area-1

Counties: Los Angeles, Orange, San Bernardino, Riverside

Flight date(s): 08-01-1928

Scale: 1:24,000

Overlap: 50% - 60%

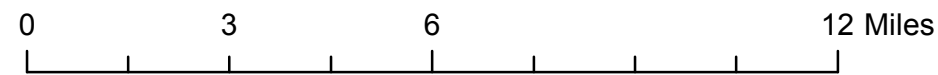
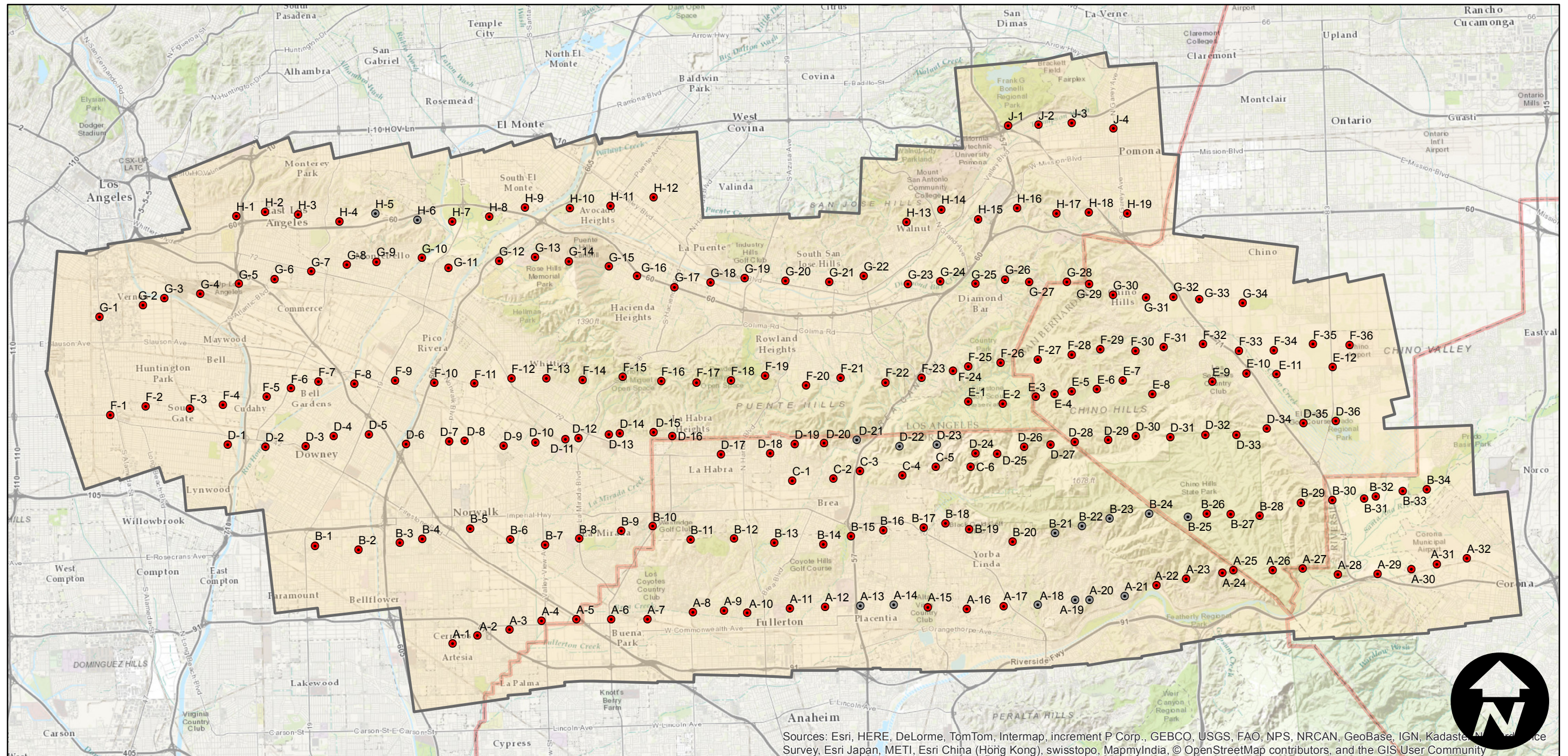
Complete Metadata:

<http://www.library.ucsb.edu/mil/aerial-photography-tools>

Note: East Los Angeles to Corona. This flight was previously cataloged as C-278A. Copy negatives acquired from Teledyne, Inc. were reproduced from original nitrate film. Prints acquired from Whittier College, January 2013.

- MIL owns frame
- MIL does not own frame

## FLIGHT LOCATION



Sources: Esri, HERE, DeLorme, TomTom, Intermap, increment P Corp., GEBCO, USGS, FAO, NPS, NRCAN, GeoBase, IGN, Kadaster, Nippon Survey, Esri Japan, METI, Esri China (Hong Kong), swisstopo, MapmyIndia, © OpenStreetMap contributors, and the GIS User Community