

C-259

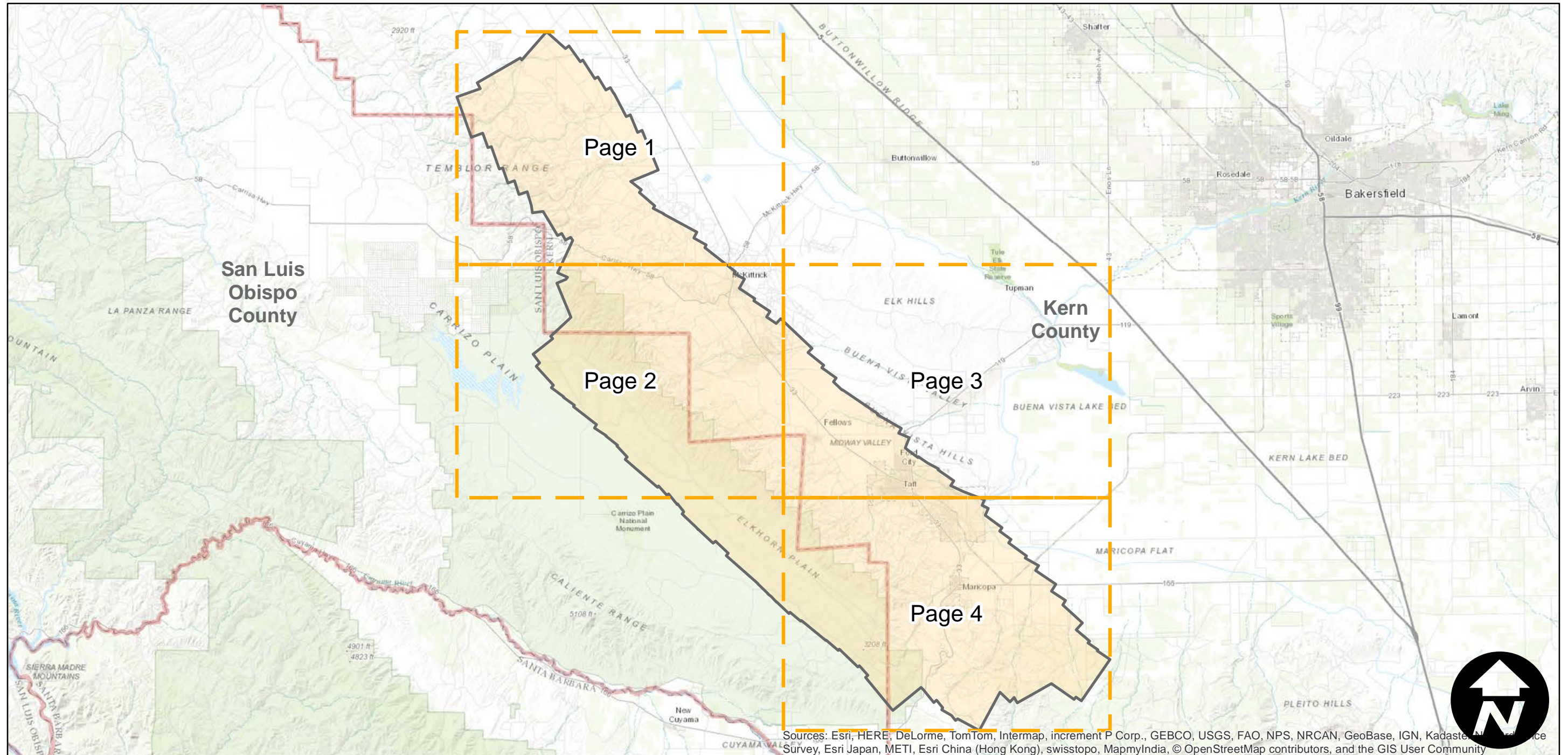
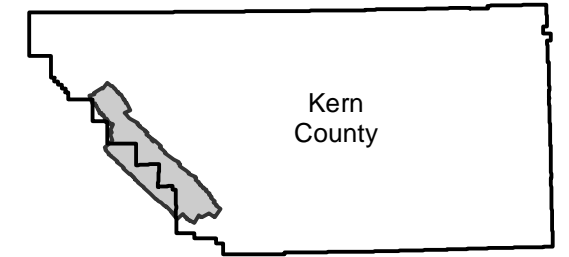
Counties: Kern, San Luis Obispo
Flight date(s): 06-28-1928
Scale: 1:24,000
Overlap: 50-60%

Complete Metadata:
<http://www.library.ucsb.edu/mil/aerial-photography-tools>

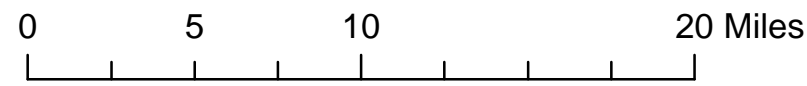
Note: Taft to McKittrick. Imagery acquired from Whittier College, January, 2013. Some negatives were destroyed per Fairchild Aerial Surveys records.

- MIL owns frame
- MIL does not own frame

FLIGHT LOCATION



Sources: Esri, HERE, DeLorme, TomTom, Intermap, increment P Corp., GEBCO, USGS, FAO, NPS, NRCAN, GeoBase, IGN, Kadaster, Nippon, Meteosat, Swisstopo, Esri Japan, METI, Esri China (Hong Kong), swisstopo, MapmyIndia, © OpenStreetMap contributors, and the GIS User Community



Index to Aerial Photography
Page Key

Scale of this index: 1:365,000

C-259

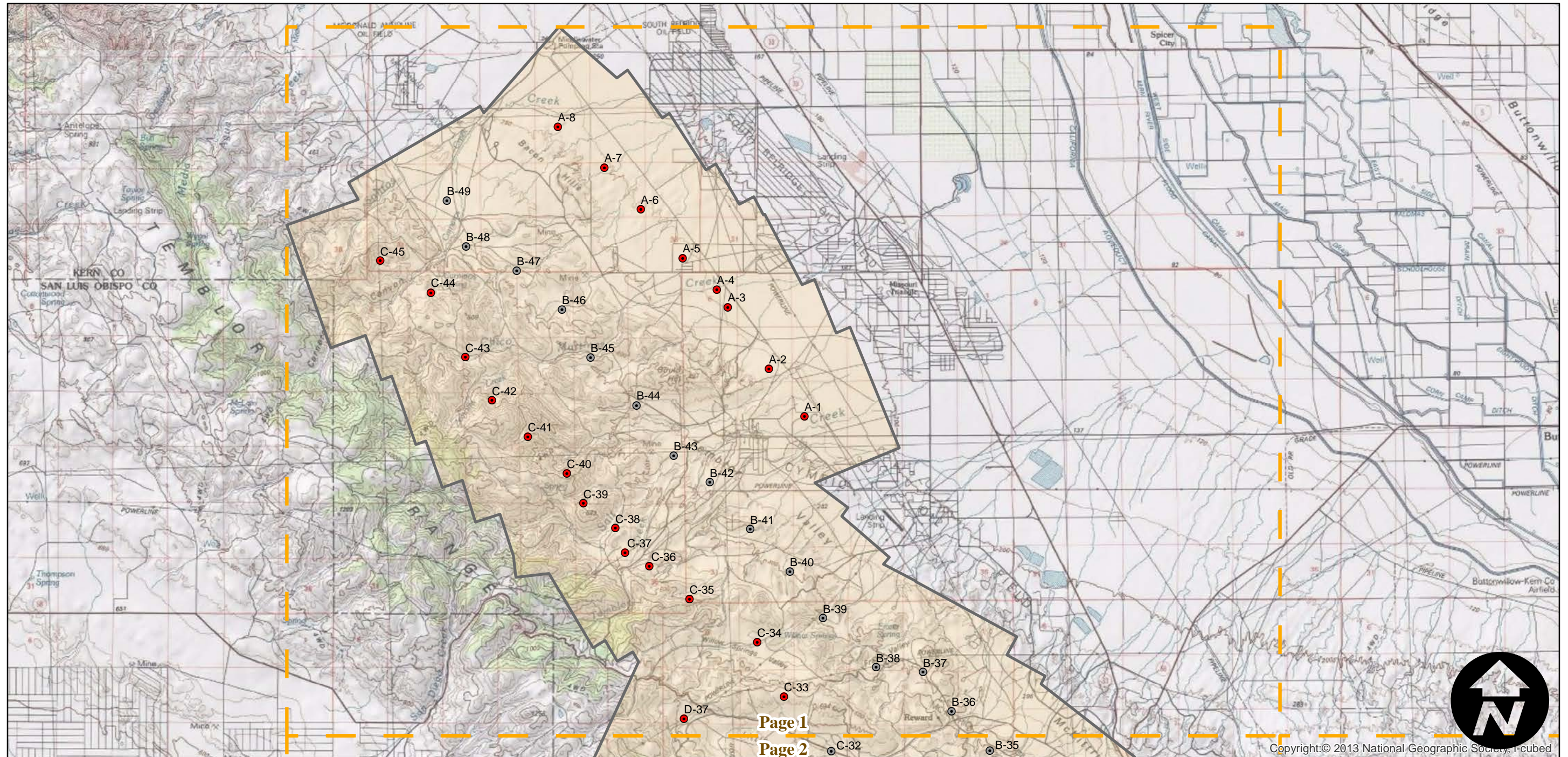
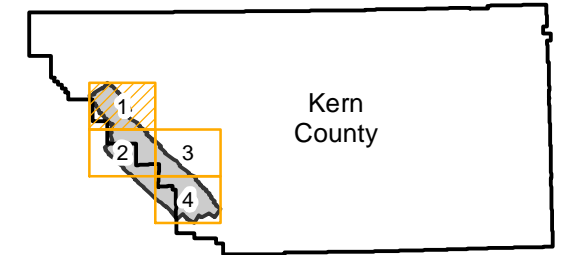
Counties: Kern, San Luis Obispo
Flight date(s): 06-28-1928
Scale: 1:24,000
Overlap: 50-60%

Complete Metadata:
<http://www.library.ucsb.edu/mil/aerial-photography-tools>

Note: Taft to McKittrick. Imagery acquired from Whittier College, January, 2013. Some negatives were destroyed per Fairchild Aerial Surveys records.

- MIL owns frame
- MIL does not own frame

FLIGHT LOCATION



0 2 4 8 Miles

Index to Aerial Photography
Page 1 of 4

Scale of this index: 1:120,000

Copyright: © 2013 National Geographic Society, Inc.

C-259

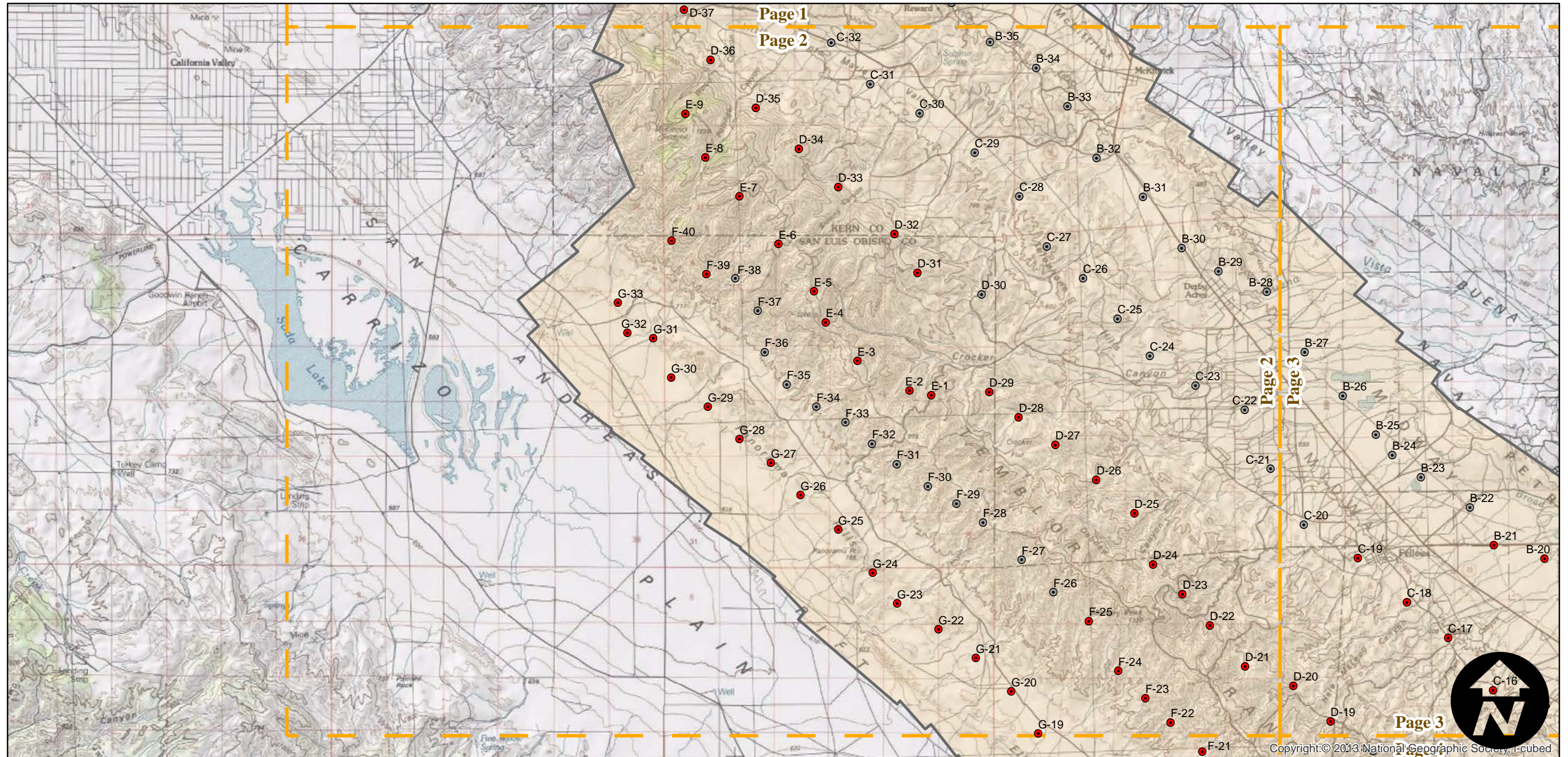
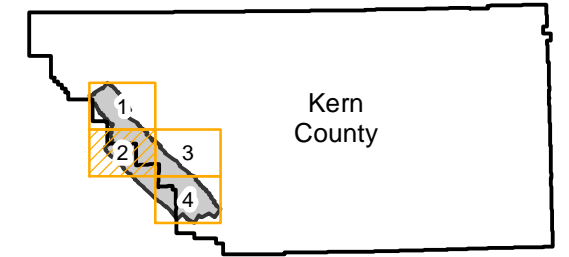
Counties: Kern, San Luis Obispo
Flight date(s): 06-28-1928
Scale: 1:24,000
Overlap: 50-60%

Complete Metadata:
<http://www.library.ucsb.edu/mil/aerial-photography-tools>

Note: Taft to McKittrick. Imagery acquired from Whittier College, January, 2013. Some negatives were destroyed per Fairchild Aerial Surveys records.

- MIL owns frame
- MIL does not own frame

FLIGHT LOCATION



0 2 4 8 Miles

Index to Aerial Photography
Page 2 of 4

Scale of this index: 1:120,000

C-259

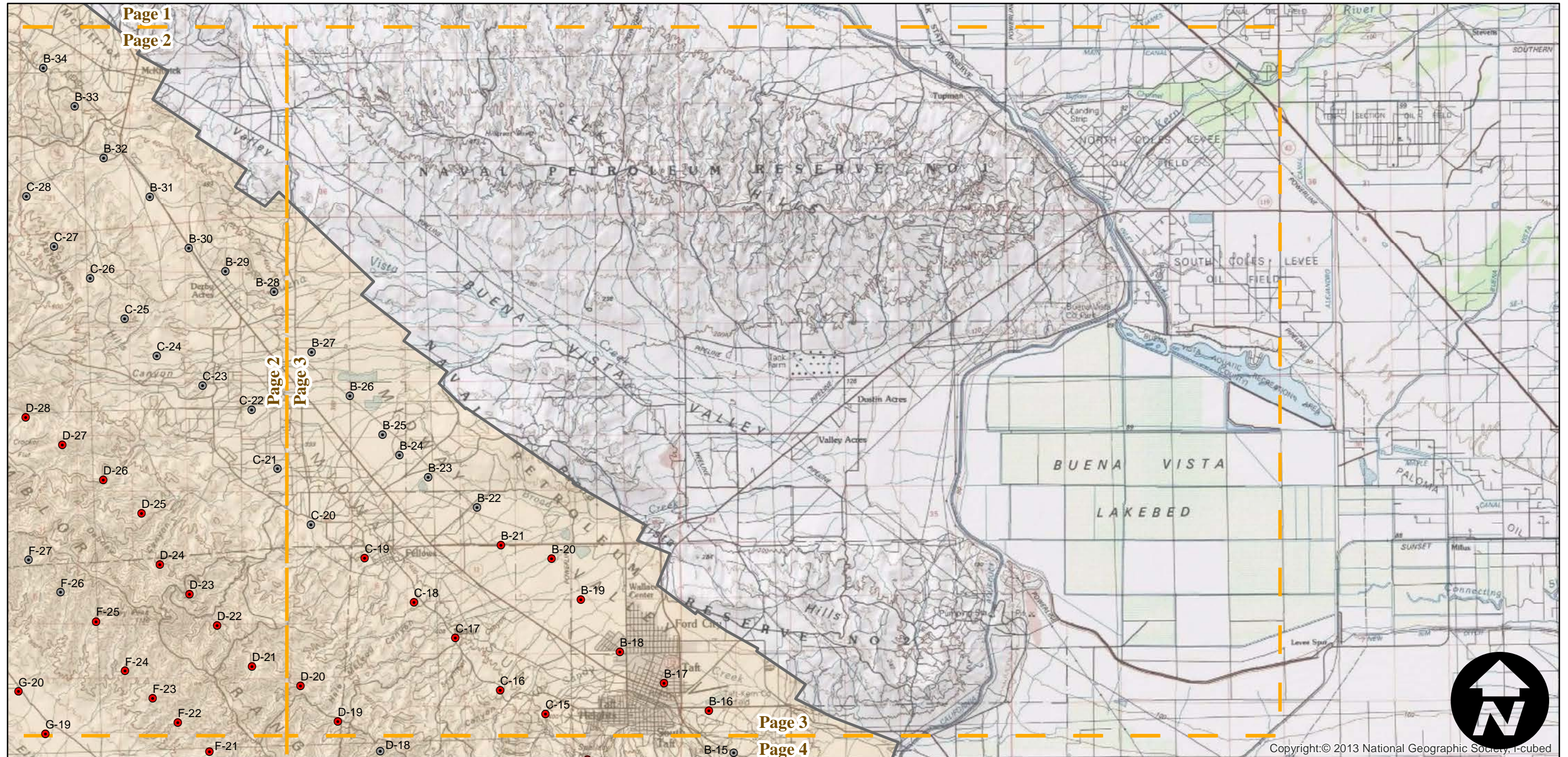
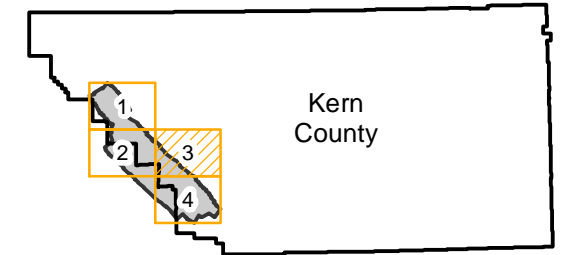
Counties: Kern, San Luis Obispo
Flight date(s): 06-28-1928
Scale: 1:24,000
Overlap: 50-60%

Complete Metadata:
<http://www.library.ucsb.edu/mil/aerial-photography-tools>

Note: Taft to McKittrick. Imagery acquired from Whittier College, January, 2013. Some negatives were destroyed per Fairchild Aerial Surveys records.

- MIL owns frame
- MIL does not own frame

FLIGHT LOCATION



C-259

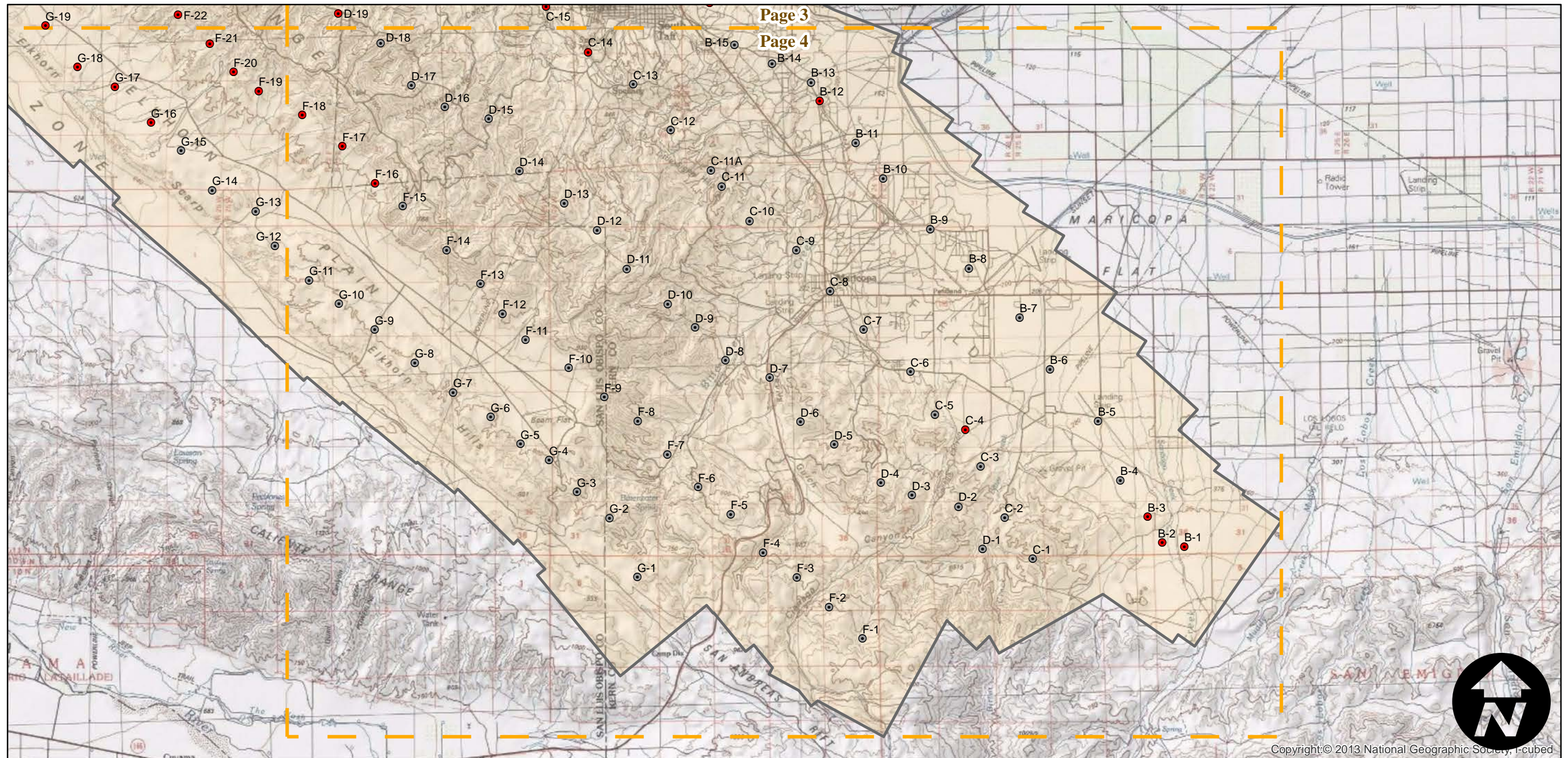
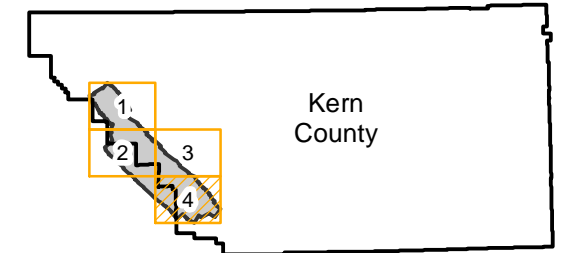
Counties: Kern, San Luis Obispo
Flight date(s): 06-28-1928
Scale: 1:24,000
Overlap: 50-60%

Complete Metadata:
<http://www.library.ucsb.edu/mil/aerial-photography-tools>

Note: Taft to McKittrick. Imagery acquired from Whittier College, January, 2013. Some negatives were destroyed per Fairchild Aerial Surveys records.

- MIL owns frame
- MIL does not own frame

FLIGHT LOCATION



0 2 4 8 Miles

Index to Aerial Photography
Page 4 of 4

Scale of this index: 1:120,000