

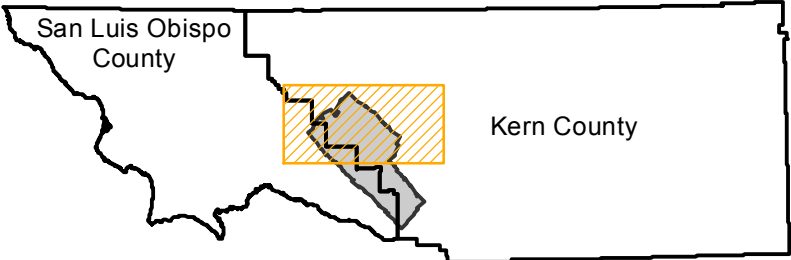
C-256

Counties: Kern, San Luis Obispo
Flight date(s): 06-15-1928
Scale: 1:24,000
Overlap: 50-60%

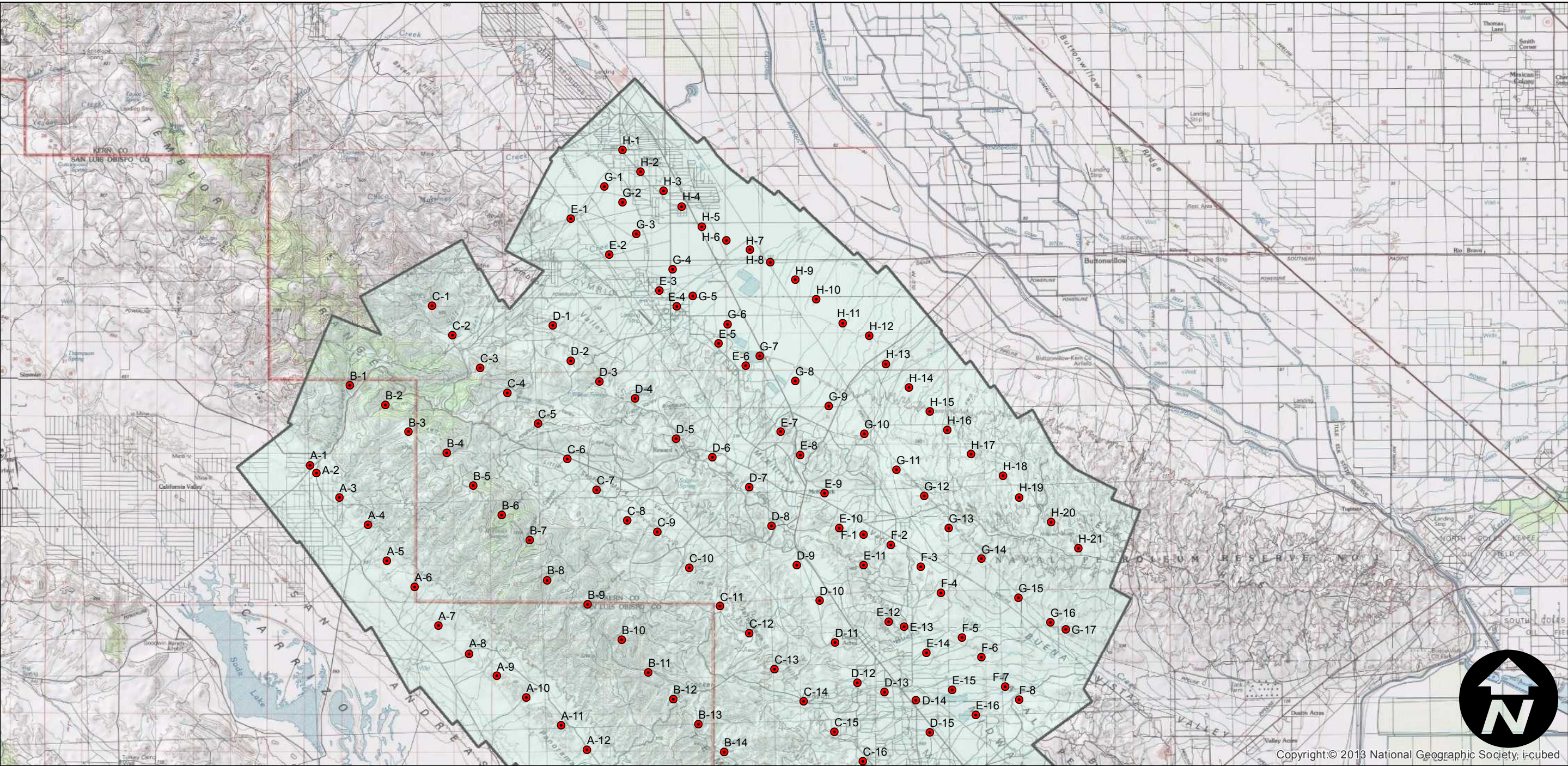
Complete Metadata:
<http://www.library.ucsb.edu/mil/aerial-photography-tools>

Note: Taft to McKittrick. Acquired from Whittier College,
January 2013.

FLIGHT LOCATION



- MIL owns frame
- MIL does not own frame



0 3 6 12 Miles

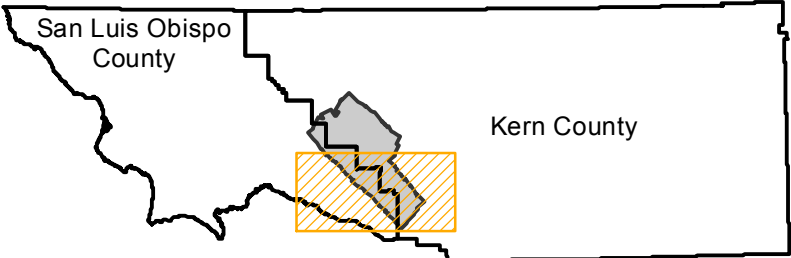
C-256

Counties: Kern, San Luis Obispo
Flight date(s): 06-15-1928
Scale: 1:24,000
Overlap: 50-60%

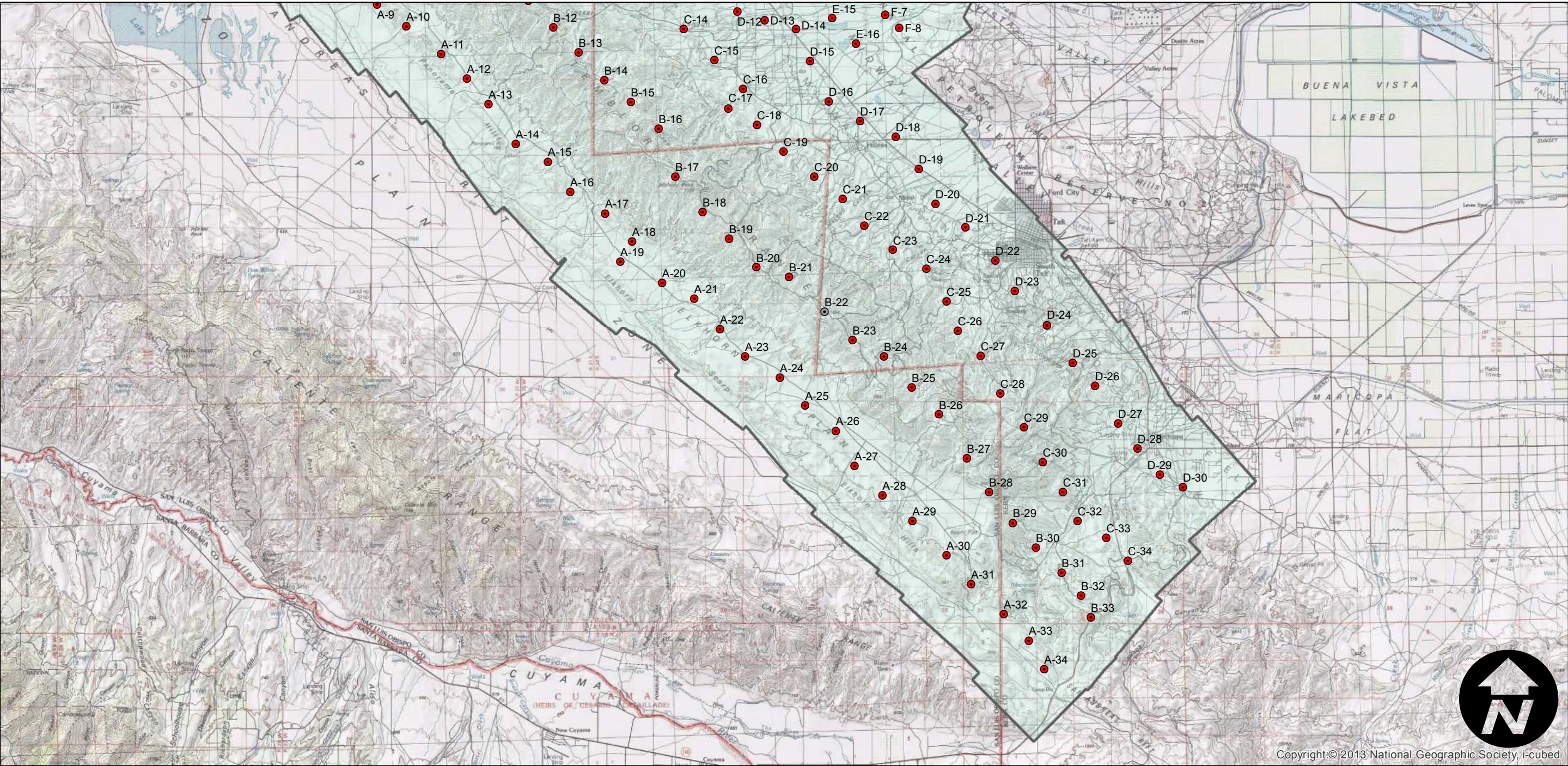
Complete Metadata:
<http://www.library.ucsb.edu/mil/aerial-photography-tools>

Note: Taft to McKittrick. Acquired from Whittier College, January 2013.

FLIGHT LOCATION



- MIL owns frame
- MIL does not own frame



0 3 6 12 Miles

Index to Aerial Photography
Page 2 of 2

Scale of this index: 1:180,000