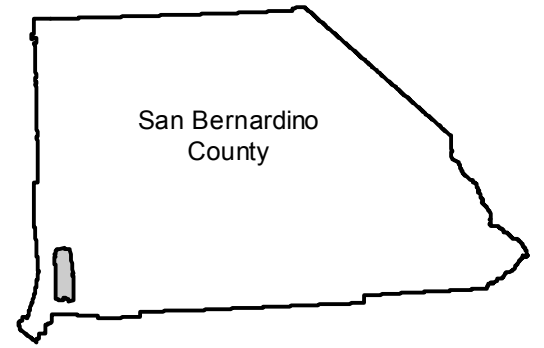


# C-2510

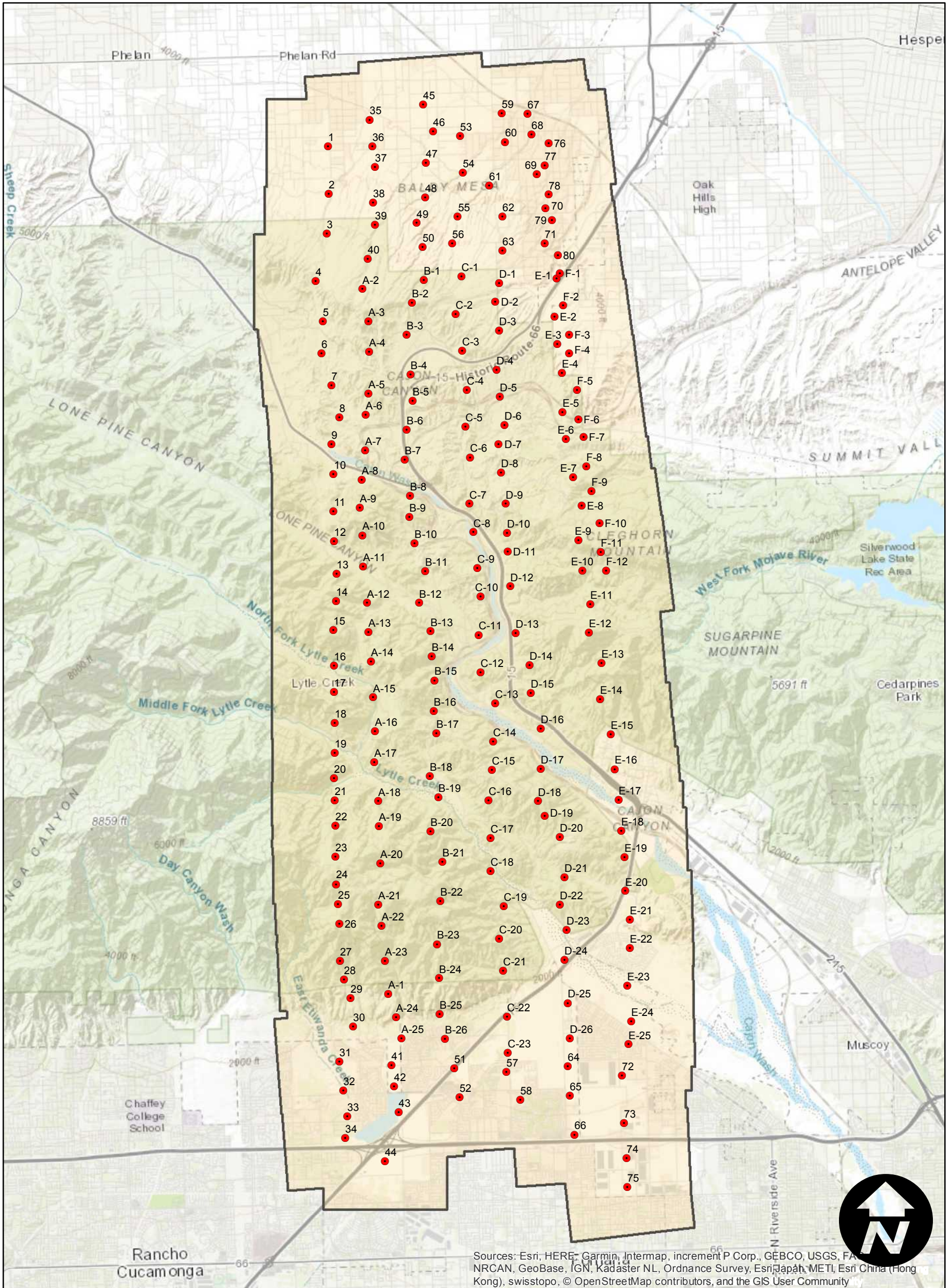
## FLIGHT LOCATION

Counties: San Bernardino  
Flight date(s): 02-05-1933  
Scale: 1:14,400  
Overlap: 60-90%

Note: Cajon Pass area: Lytle Creek, Cajon Boulevard, and Interstate 15. Acquired from Whittier College, January 2013. Nitrate negatives scanned April 2015.



Complete Metadata:  
<https://www.library.ucsb.edu/src/airphotos/aerial-photography-information>



0 1 2 4 Miles