

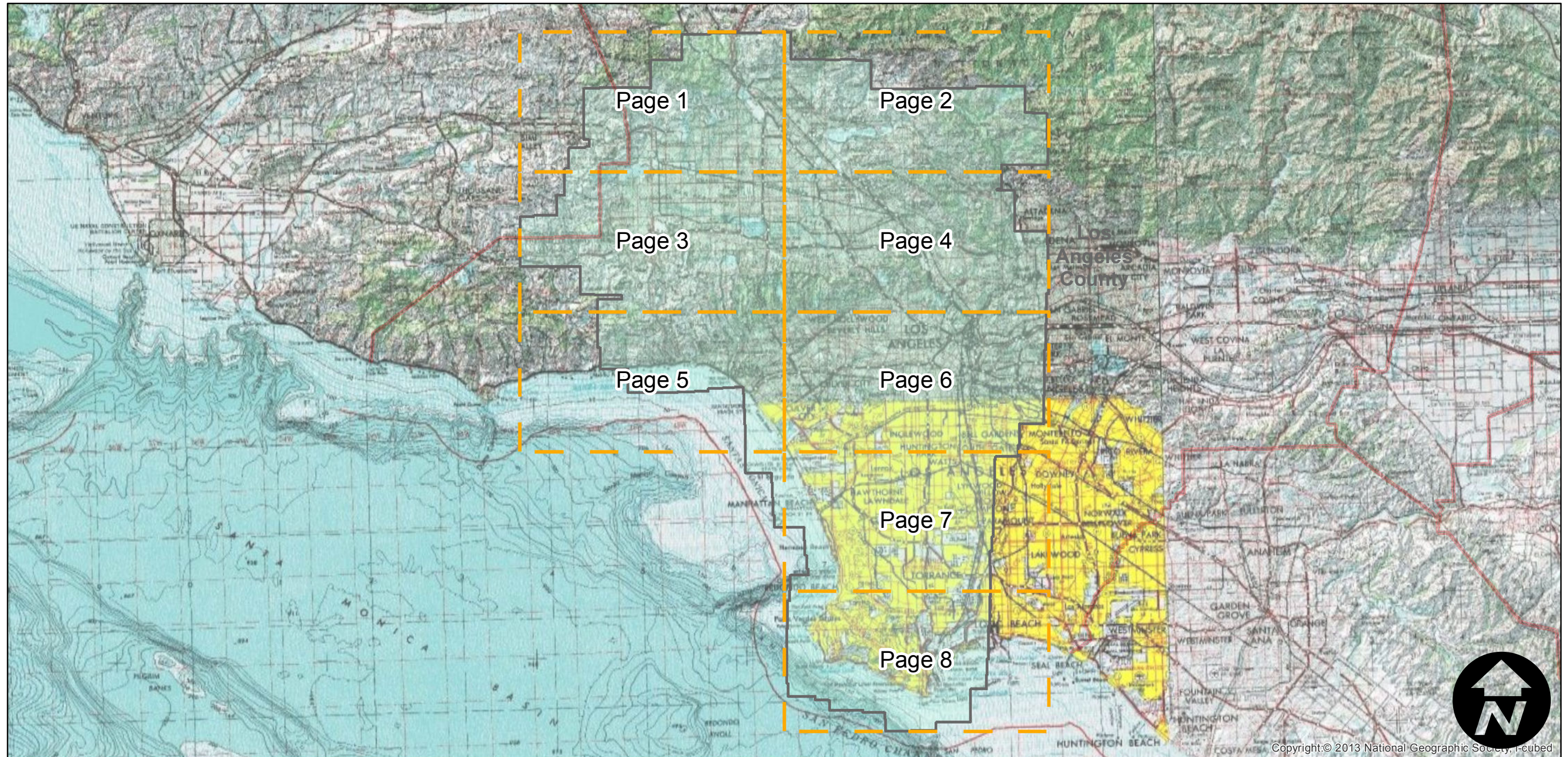
C-25019

Counties: Los Angeles
Flight date(s): 11-27-1965 to 11-28-1965
Scale: 1:24,000
Overlap: 60%

Note: Imagery acquired 1986.

Complete Metadata:
<http://www.library.ucsb.edu/mil/aerial-photography-tools>

FLIGHT LOCATION



0 10 20 40 Miles

Index to Aerial Photography
Page Key

Scale of this index: 1:450,000



Copyright © 2013 National Geographic Society, I-cubed

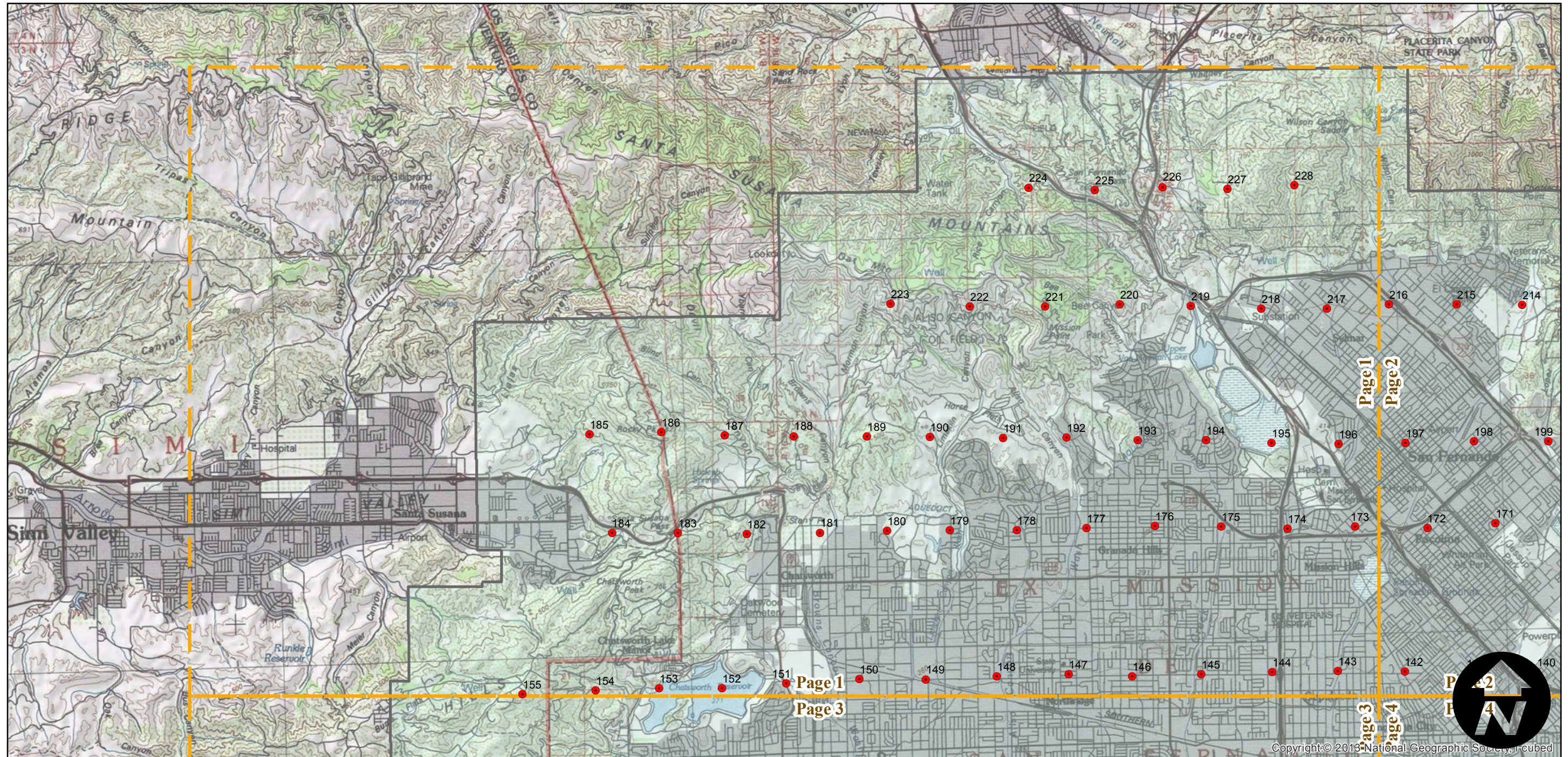
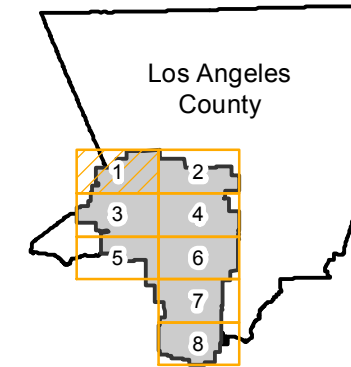
C-25019

Counties: Los Angeles
Flight date(s): 11-27-1965 to 11-28-1965
Scale: 1:24,000
Overlap: 60%

Note: Imagery acquired 1986.

Complete Metadata:
<http://www.library.ucsb.edu/mil/aerial-photography-tools>

FLIGHT LOCATION



0 2 4 8 Miles

Index to Aerial Photography
Page 1 of 8

Scale of this index: 1:100,000

Copyright © 2013 National Geographic Society, Inc.

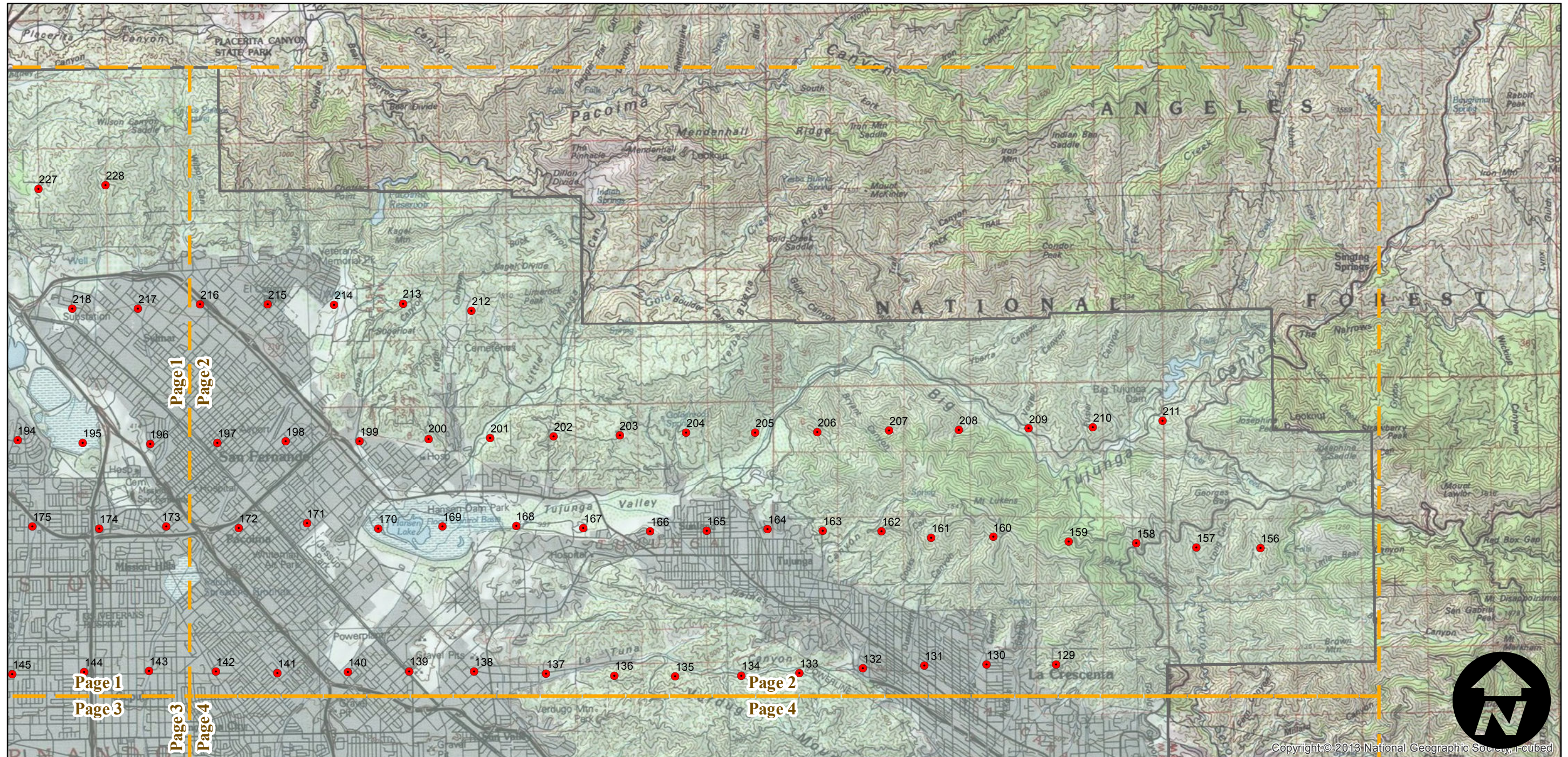
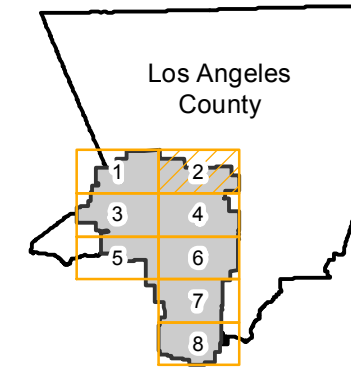
C-25019

Counties: Los Angeles
Flight date(s): 11-27-1965 to 11-28-1965
Scale: 1:24,000
Overlap: 60%

Note: Imagery acquired 1986.

Complete Metadata:
<http://www.library.ucsb.edu/mil/aerial-photography-tools>

FLIGHT LOCATION



0 2 4 8 Miles

Index to Aerial Photography
Page 2 of 8

Scale of this index: 1:100,000

Copyright: © 2013 National Geographic Society, i-cubed

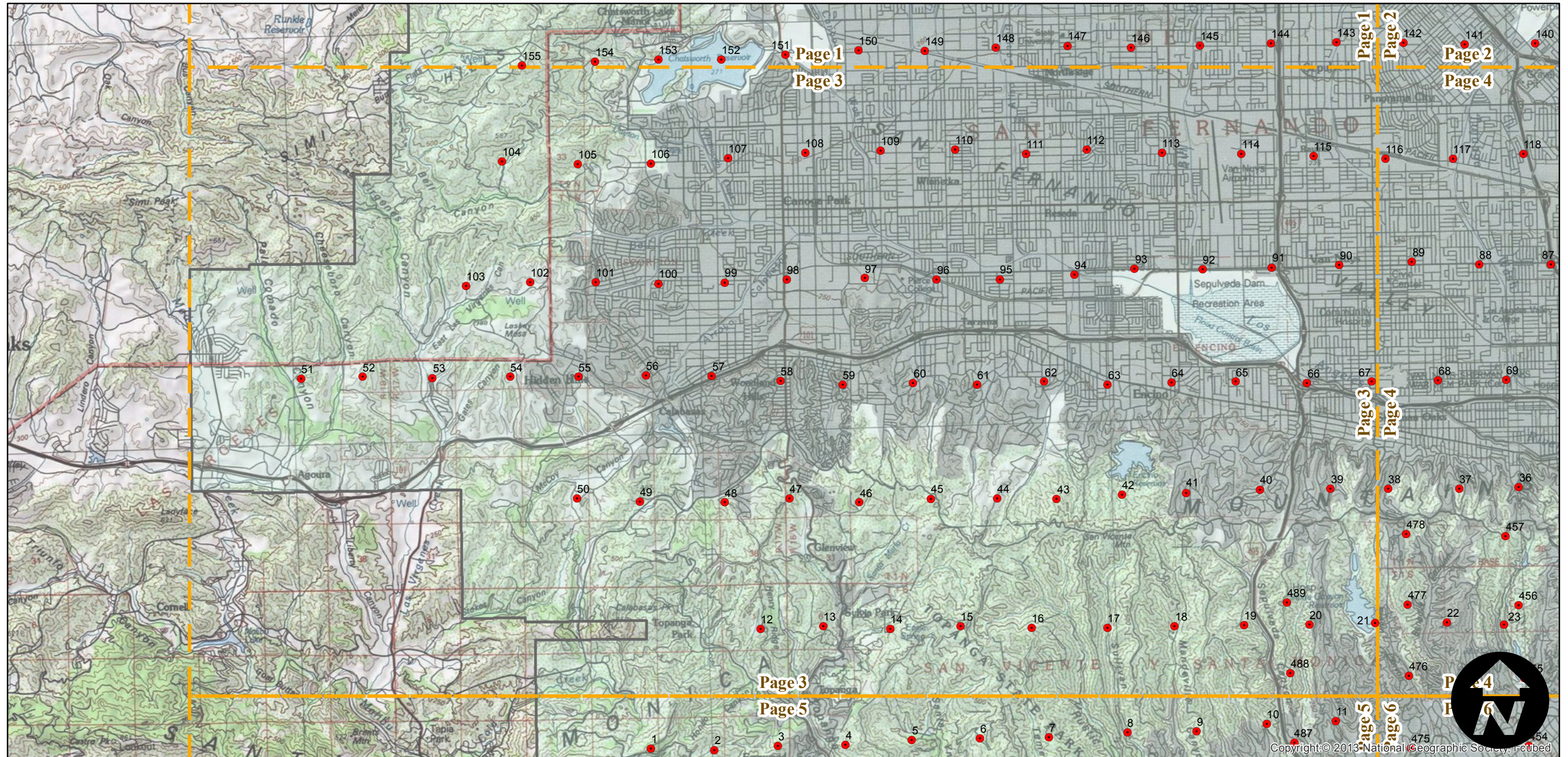
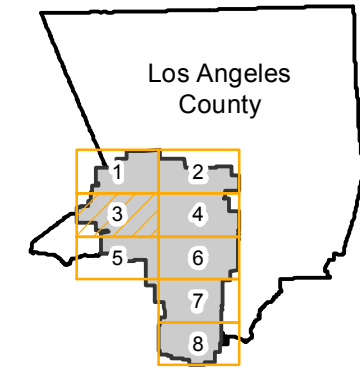
C-25019

Counties: Los Angeles
Flight date(s): 11-27-1965 to 11-28-1965
Scale: 1:24,000
Overlap: 60%

Note: Imagery acquired 1986.

Complete Metadata:
<http://www.library.ucsb.edu/mil/aerial-photography-tools>

FLIGHT LOCATION



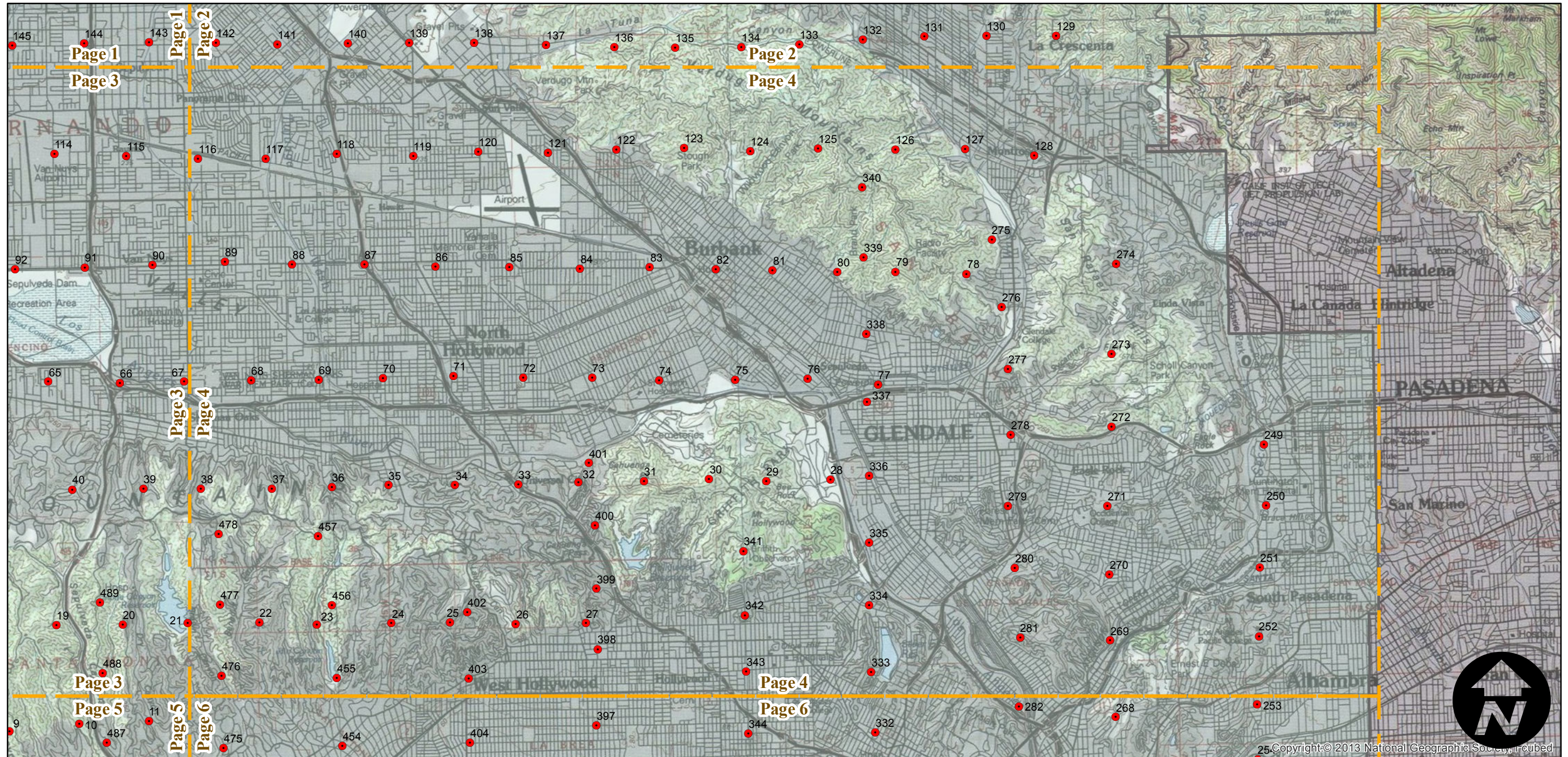
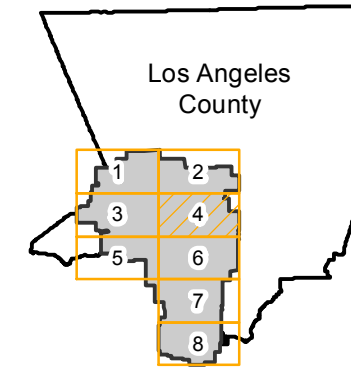
C-25019

Counties: Los Angeles
Flight date(s): 11-27-1965 to 11-28-1965
Scale: 1:24,000
Overlap: 60%

Note: Imagery acquired 1986.

Complete Metadata:
<http://www.library.ucsb.edu/mil/aerial-photography-tools>

FLIGHT LOCATION



0 2 4 8 Miles

Index to Aerial Photography
Page 4 of 8

Scale of this index: 1:100,000



Copyright: © 2013 National Geographic Society, Inc.

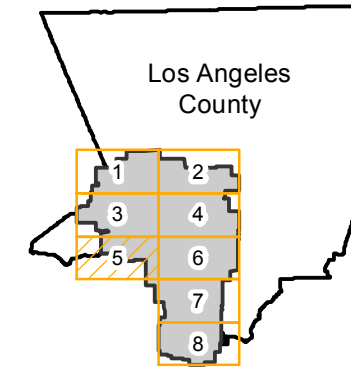
C-25019

Counties: Los Angeles
Flight date(s): 11-27-1965 to 11-28-1965
Scale: 1:24,000
Overlap: 60%

Note: Imagery acquired 1986.

Complete Metadata:
<http://www.library.ucsb.edu/mil/aerial-photography-tools>

FLIGHT LOCATION



0 2 4 8 Miles

Index to Aerial Photography
Page 5 of 8

Scale of this index: 1:100,000

Copyright: © 2013 National Geographic Society, i-cubed

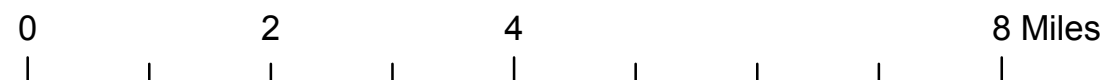
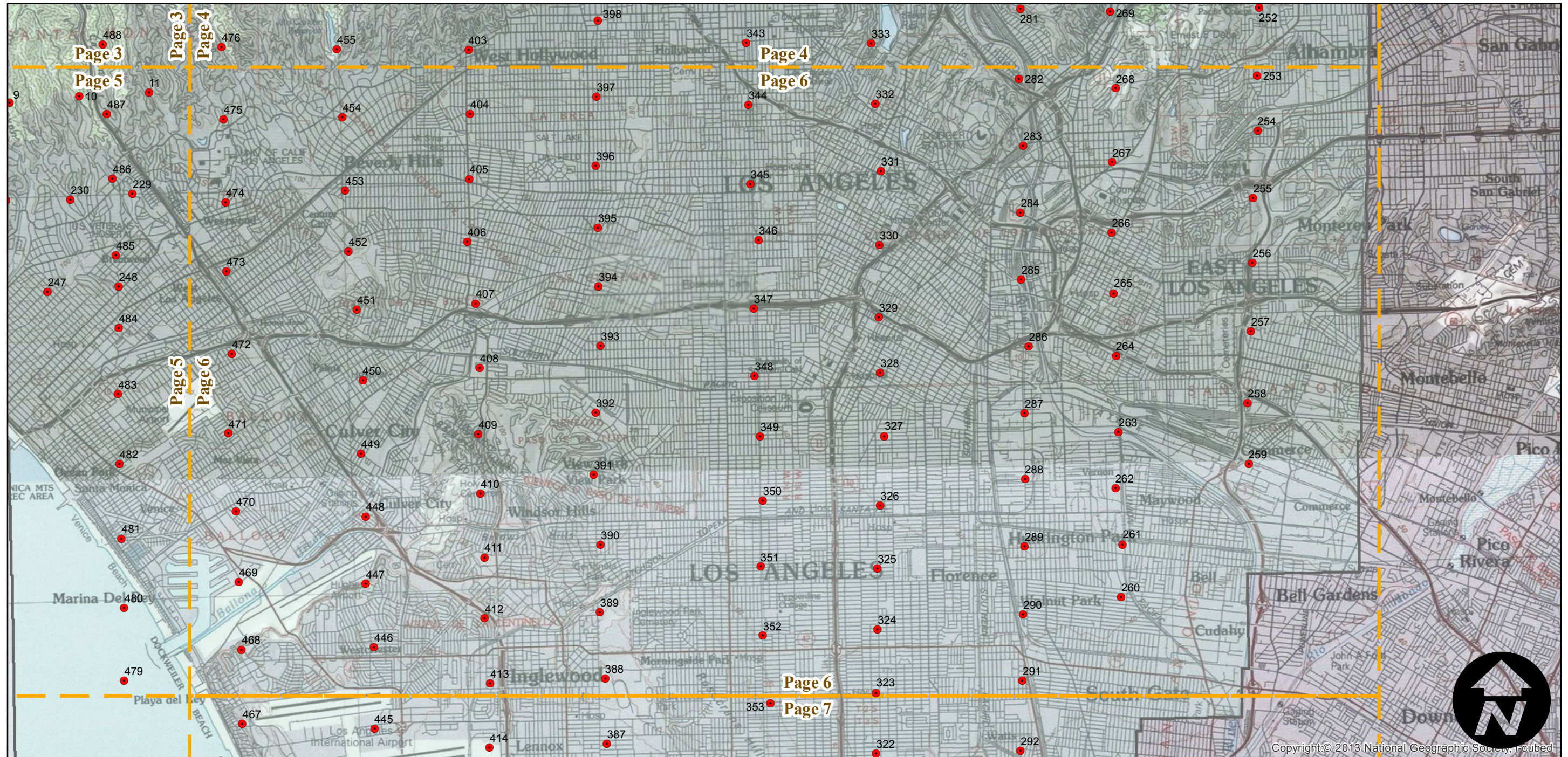
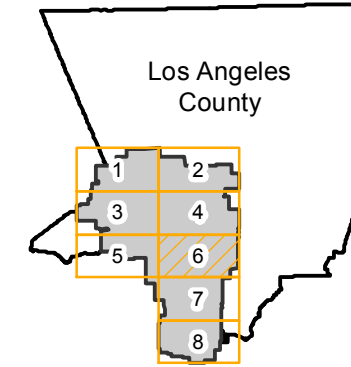
C-25019

Counties: Los Angeles
Flight date(s): 11-27-1965 to 11-28-1965
Scale: 1:24,000
Overlap: 60%

Note: Imagery acquired 1986.

Complete Metadata:
<http://www.library.ucsb.edu/mil/aerial-photography-tools>

FLIGHT LOCATION



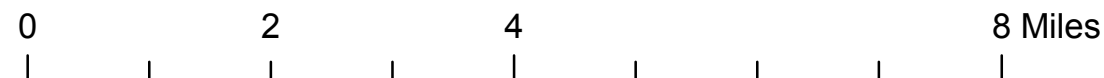
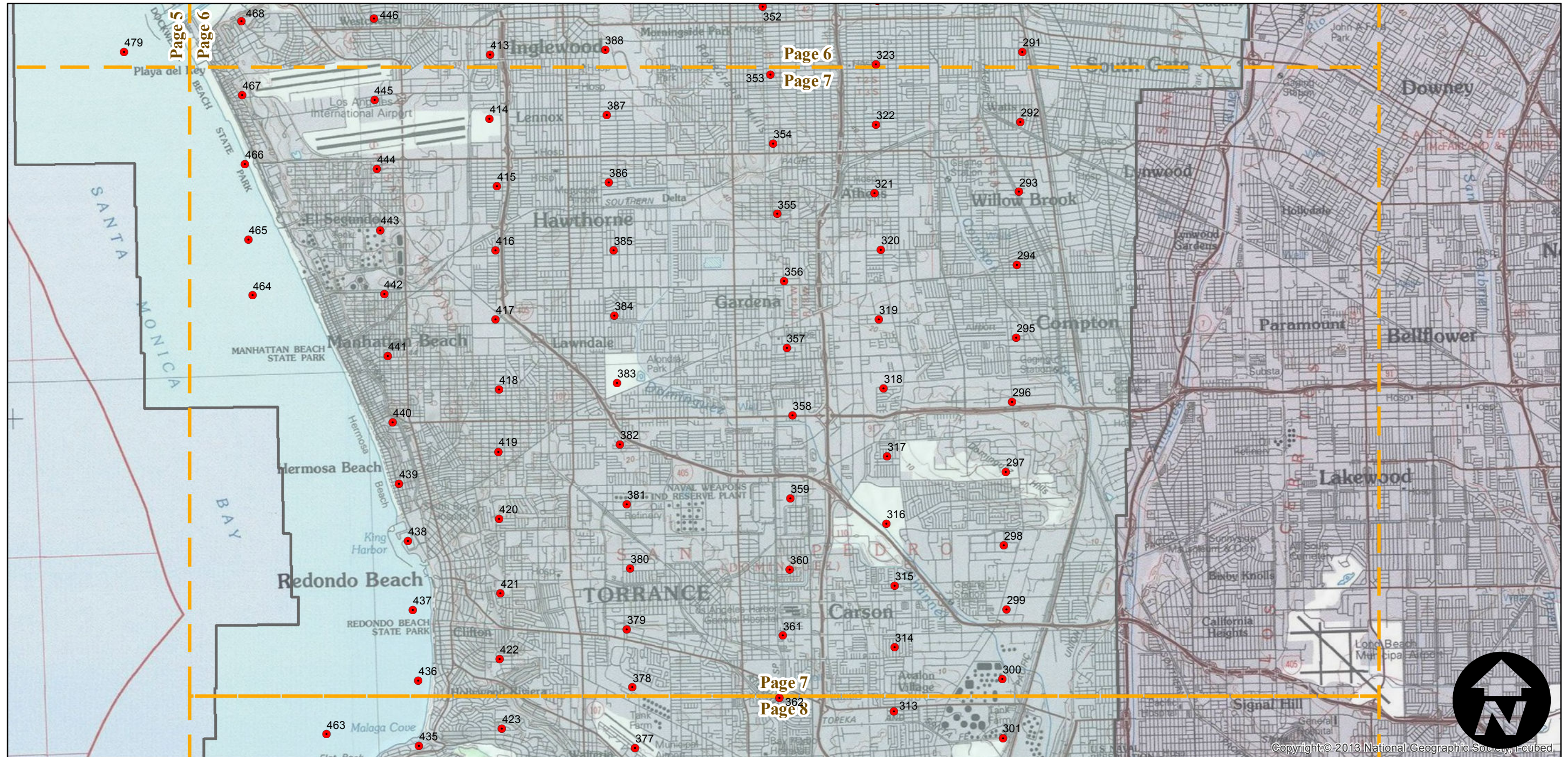
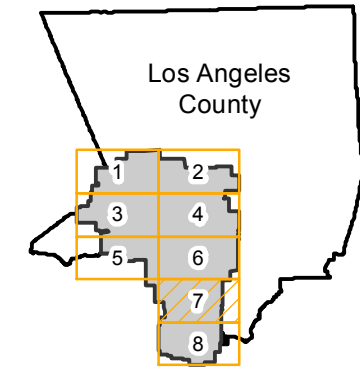
C-25019

Counties: Los Angeles
Flight date(s): 11-27-1965 to 11-28-1965
Scale: 1:24,000
Overlap: 60%

Note: Imagery acquired 1986.

Complete Metadata:
<http://www.library.ucsb.edu/mil/aerial-photography-tools>

FLIGHT LOCATION



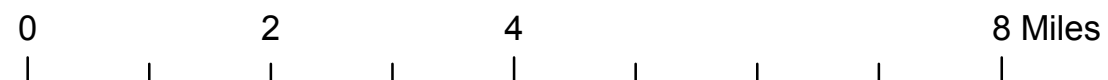
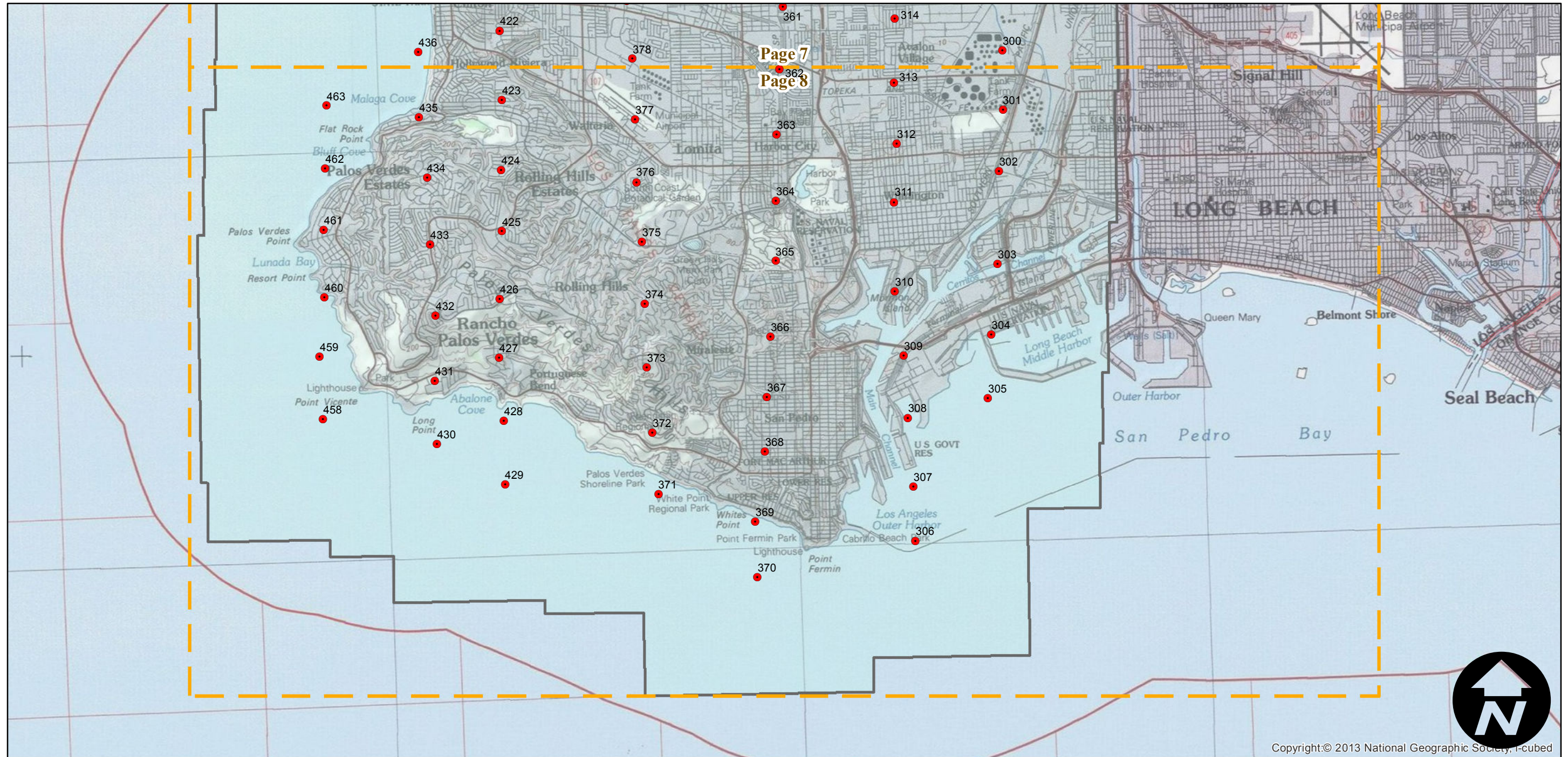
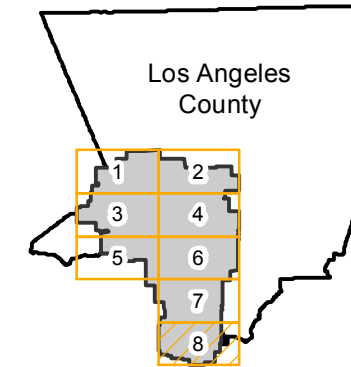
C-25019

Counties: Los Angeles
Flight date(s): 11-27-1965 to 11-28-1965
Scale: 1:24,000
Overlap: 60%

Note: Imagery acquired 1986.

Complete Metadata:
<http://www.library.ucsb.edu/mil/aerial-photography-tools>

FLIGHT LOCATION



Index to Aerial Photography
Page 8 of 8

Scale of this index: 1:100,000



Copyright:© 2013 National Geographic Society, I-cubed