

# C-24223 (Roll 5)

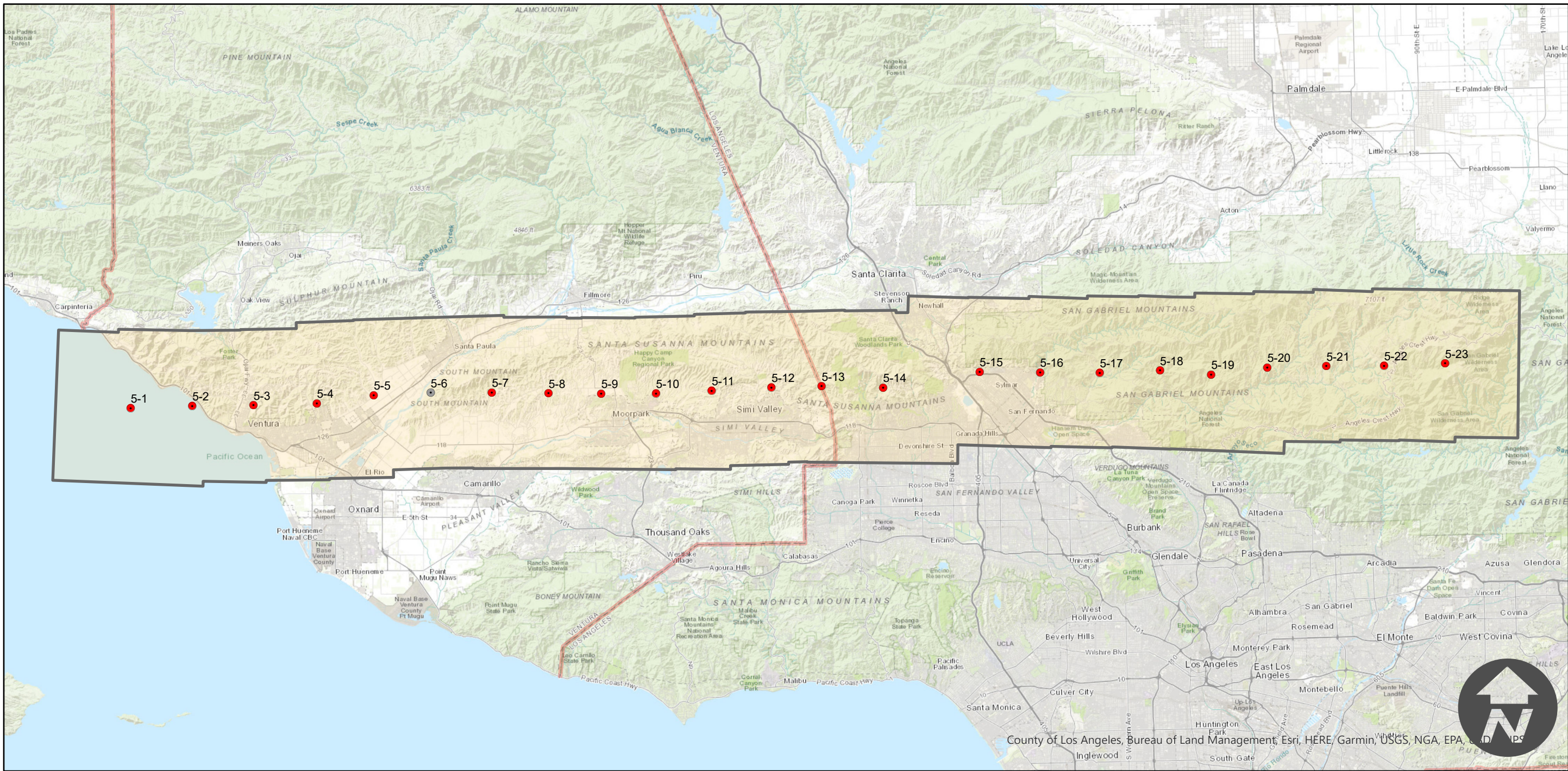
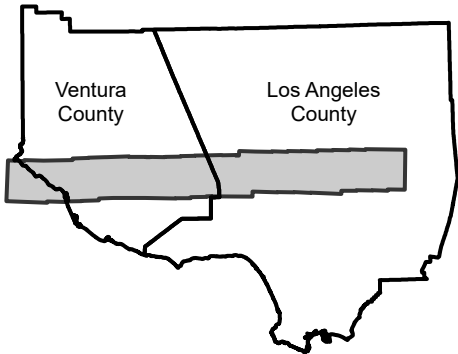
Counties: Los Angeles, Orange, Riverside, San Bernardino, San Diego, Ventura, Santa Barbara, Kern  
Flight date(s): 11-23-1961 to 01-05-1962  
Scale: 1:63,360  
Overlap: 60%

Complete Metadata:  
<https://www.library.ucsb.edu/src/airphotos/aerial-photography-information>

Note: Coverage includes nearly all of Los Angeles, Orange, and Ventura Counties. With partial coverage of Riverside and San Diego Counties. Imagery acquired from Whittier College, January 2013.

- MIL owns frame
- MIL does not own frame

## FLIGHT LOCATION



0 5 10 20 Miles

Index to Aerial Photography  
Page 1 of 1

Scale of this index: 1:425,000