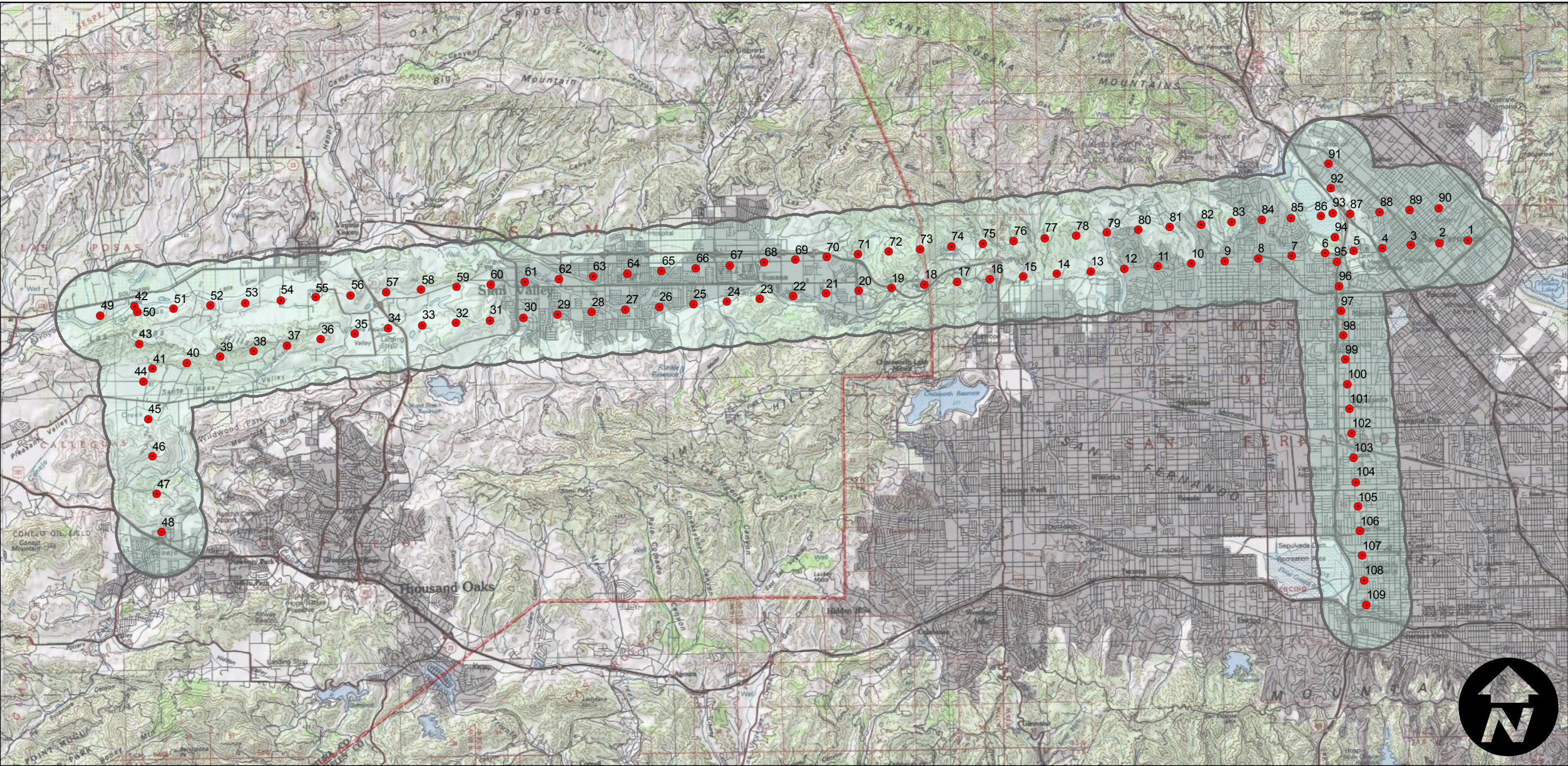


# C-23951-2

Counties: Ventura and Los Angeles  
Flight date(s): 08-12-1960  
Scale: 1: 14,400  
Overlap: 60%

Complete Metadata:  
<http://www.library.ucsb.edu/mil/aerial-photography-tools>

Note: Roll 2. Flight number assigned by MIL. Frame numbers are taken from the frame counter on the film. "Ser. No. 54-025 FAS-017" written in instrument window next to each frame. Film received with FAS-NY rolls with "FAS-017" designation. Acquired 1995.



0 2.5 5 10 Miles

Scale of this index: 1:150,000