

C-23578 (1:65K)

Counties: Los Angeles, Orange, Ventura, Riverside,  
San Diego, Imperial

Flight date(s): 4-1-1959 to 5-30-1959

Scale: 1:65,000

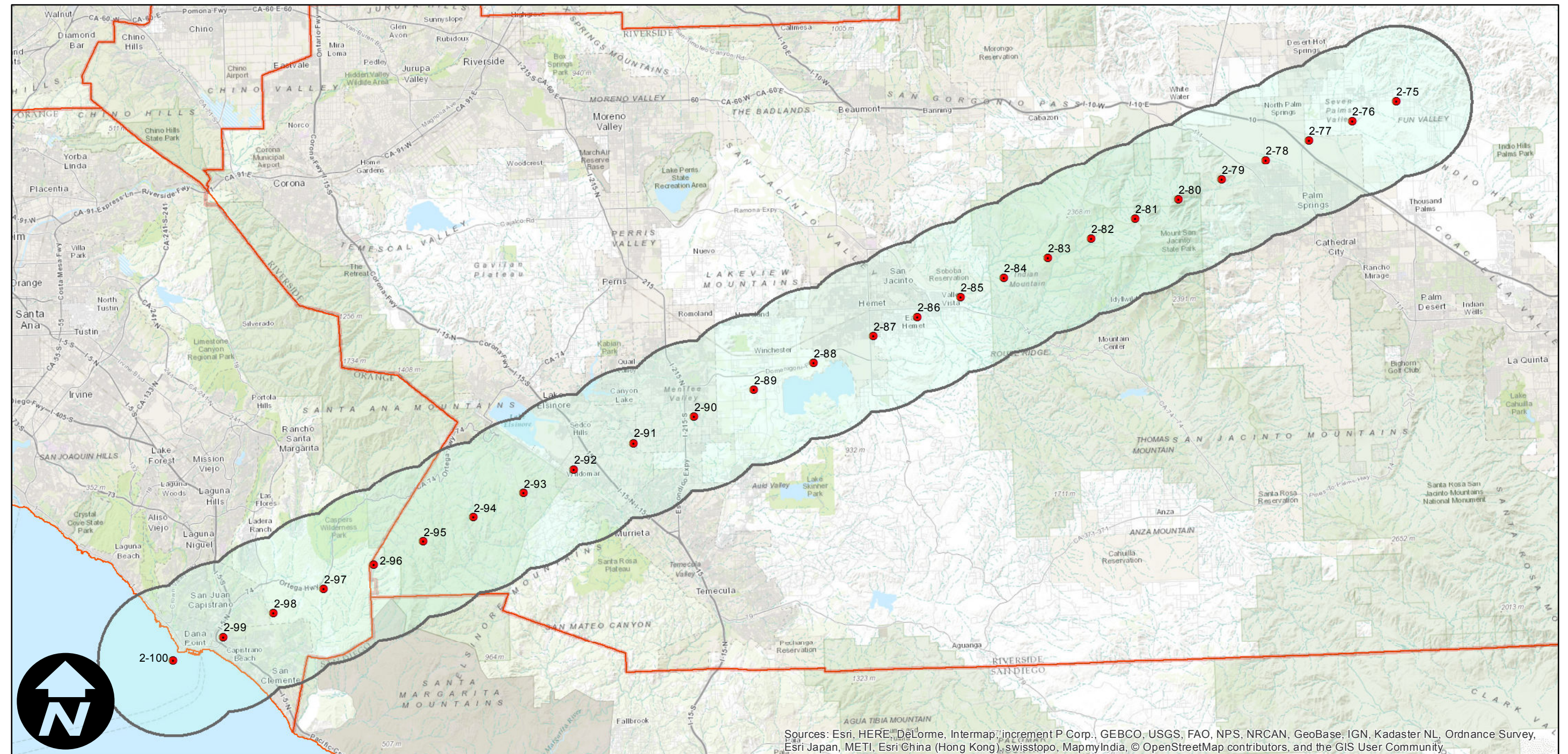
Overlap: 60%

### Complete Metadata:

<http://www.library.ucsb.edu/mil/aerial-photography->

Note: Flight covers various parts of Ventura, Los Angeles, Orange, Riverside, Imperial, and San Diego counties at scales of 1:9,600, 1:12,000, 1:20,000, 1:24,000, and 1:65,000. See index for details. Imagery acquired from Whittier College, January 2013.

- MIL owns frame
- MIL does not own frame



Sources: Esri, HERE, DeLorme, Intermap, increment P Corp., GEBCO, USGS, FAO, NPS, NRCAN, GeoBase, IGN, Kadaster NL, Ordnance Survey, Esri Japan, METI, Esri China (Hong Kong), swisstopo, MapmyIndia, © OpenStreetMap contributors, and the GIS User Community

0 5 10 20 Miles

Index to Aerial Photography  
Page 1 of 1

Scale of this index: 1:400,000