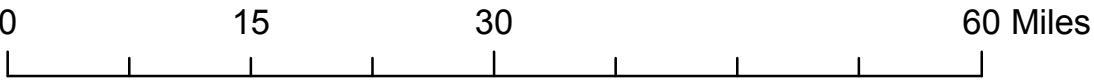
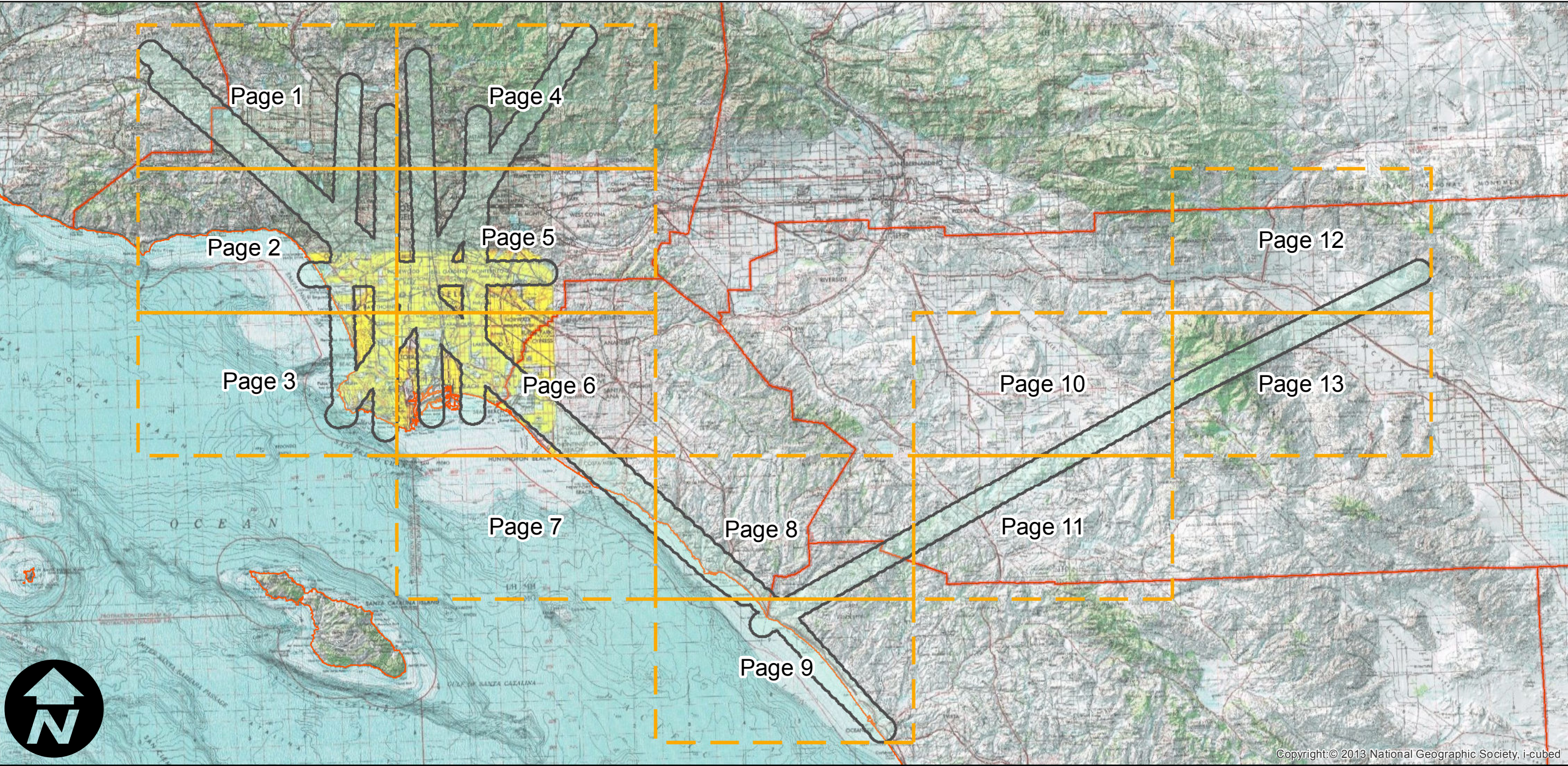
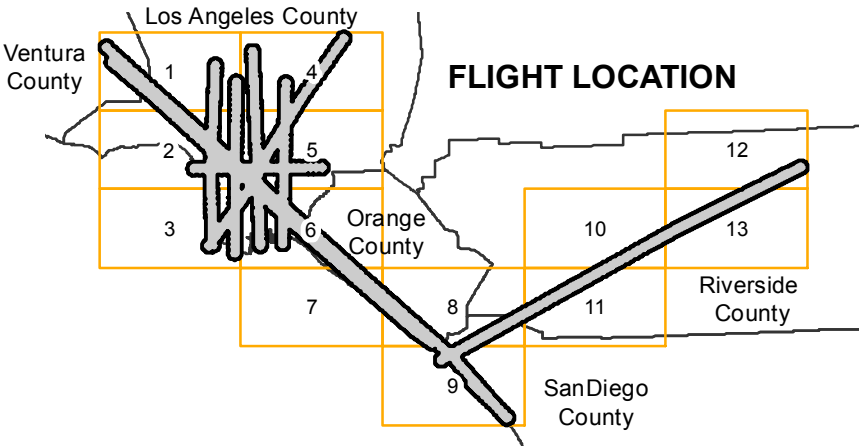


# C-23578 (1:20K)

Counties: Los Angeles, Orange, Ventura, Riverside,  
San Diego, Imperial  
Flight date(s): 4-1-1959 to 5-30-1959  
Scale: 1:20,000  
Overlap: 60%

Note: Flight covers various parts of Ventura, Los Angeles,  
Orange, Riverside, Imperial, and San Diego counties at  
scales of 1:9,600, 1:12,000, 1:20,000, 1:24,000, and  
1:65,000. See index for details. Imagery acquired from  
Whittier College, January 2013.

Complete Metadata:  
<http://www.library.ucsb.edu/mil/aerial-photography->



Index to Aerial Photography  
Page Key

Scale of this index: 1:750,000

Copyright:© 2013 National Geographic Society, i-cubed



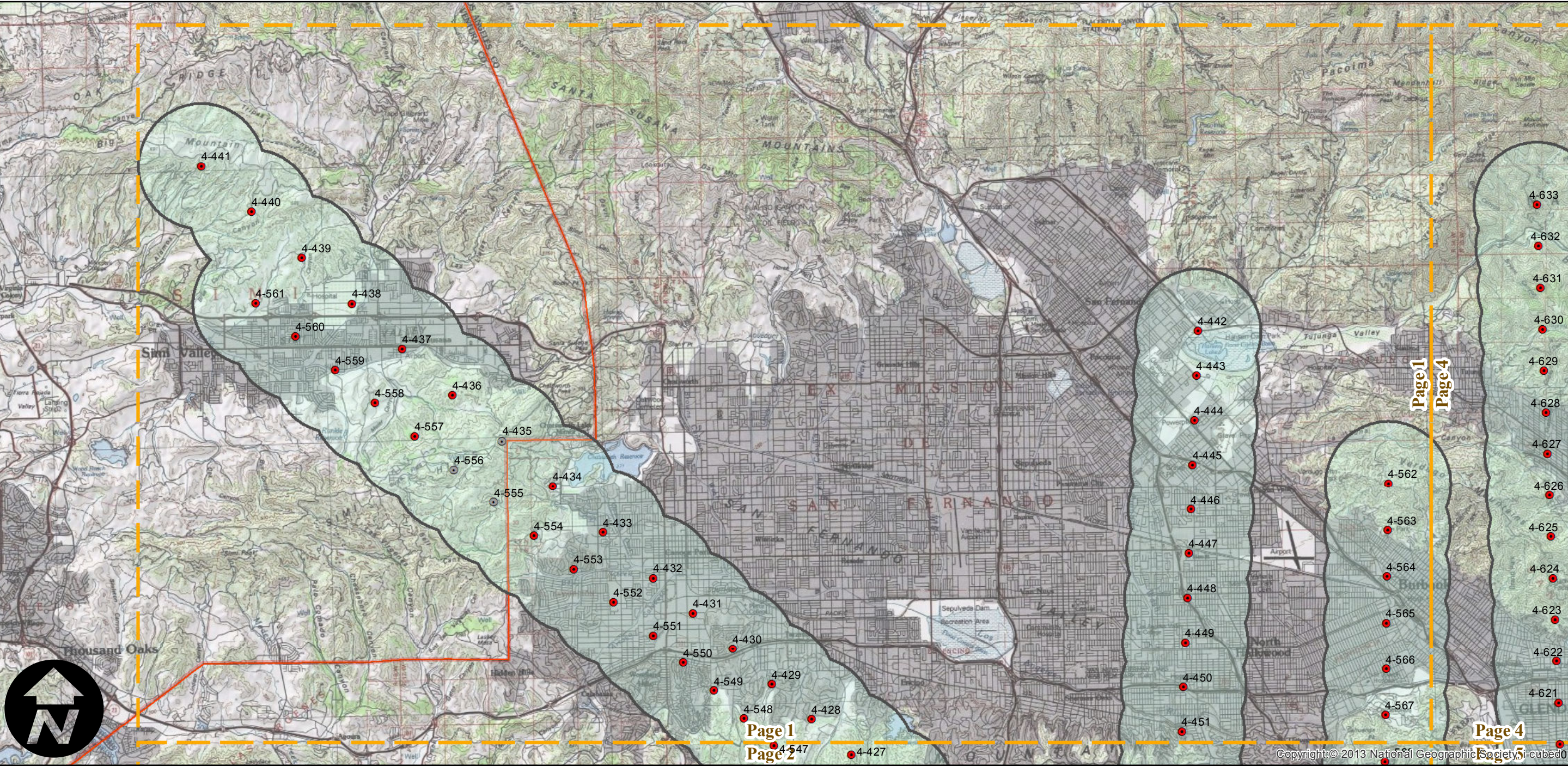
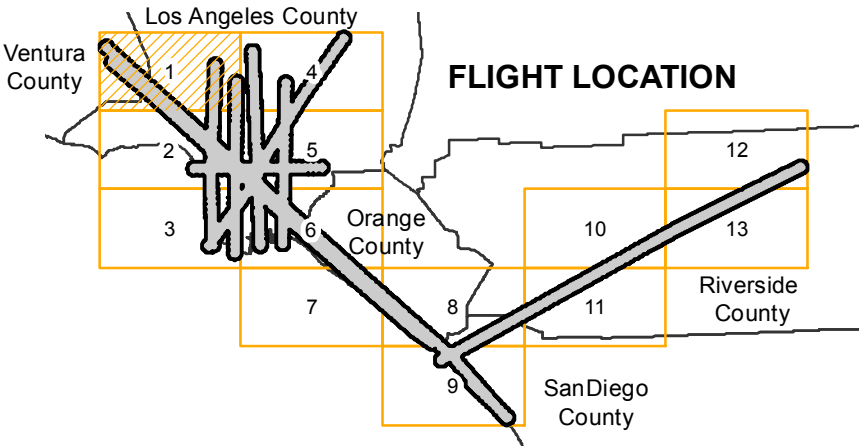
# C-23578 (1:20K)

Counties: Los Angeles, Orange, Ventura, Riverside,  
San Diego, Imperial  
Flight date(s): 4-1-1959 to 5-30-1959  
Scale: 1:20,000  
Overlap: 60%

Complete Metadata:  
<http://www.library.ucsb.edu/mil/aerial-photography->

Note: Flight covers various parts of Ventura, Los Angeles, Orange, Riverside, Imperial, and San Diego counties at scales of 1:9,600, 1:12,000, 1:20,000, 1:24,000, and 1:65,000. See index for details. Imagery acquired from Whittier College, January 2013.

- MIL owns frame
- MIL does not own frame





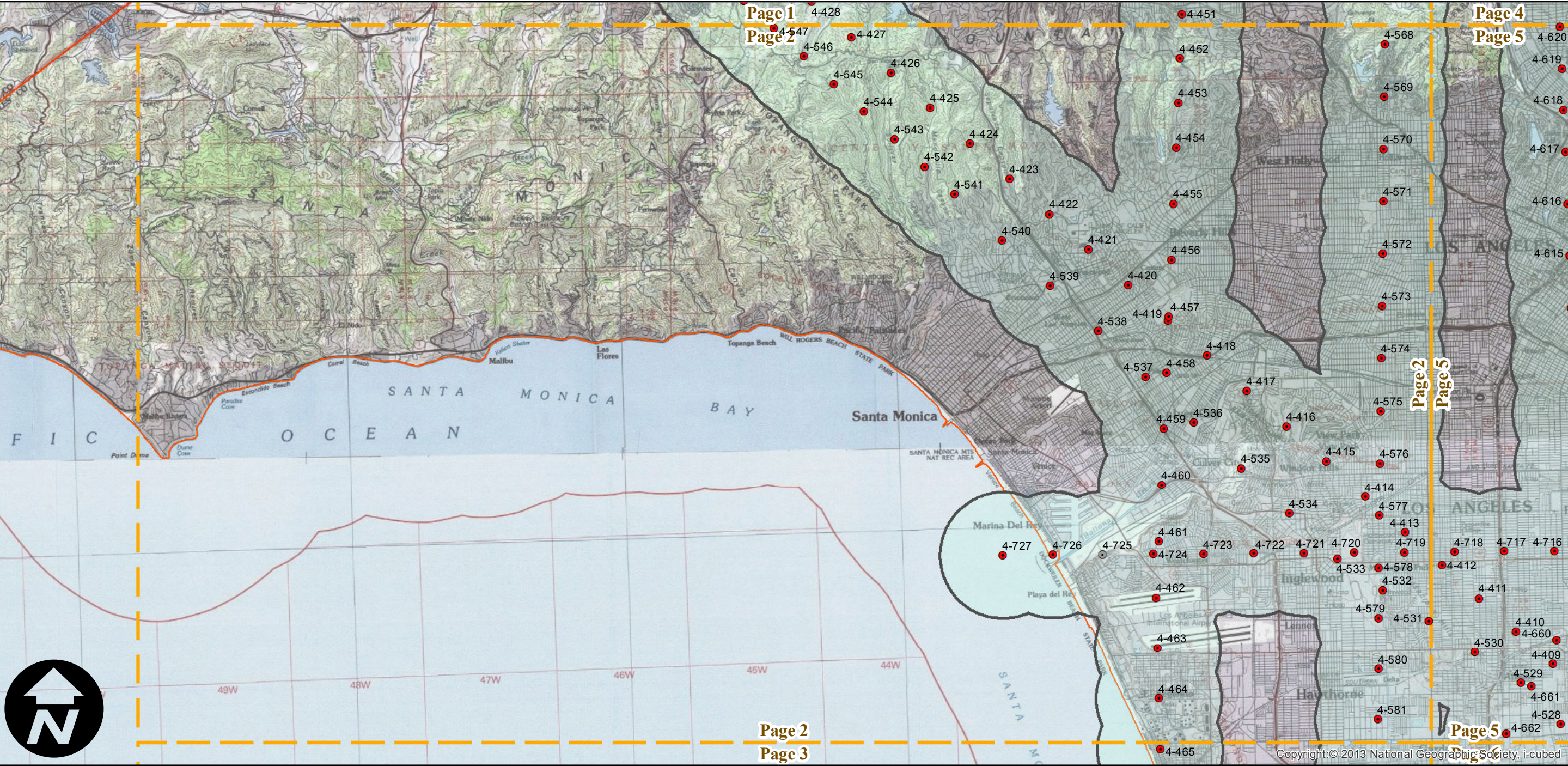
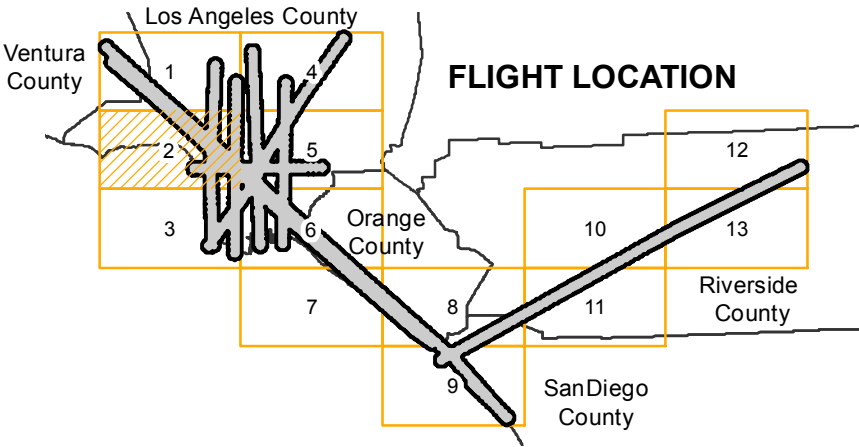
# C-23578 (1:20K)

Counties: Los Angeles, Orange, Ventura, Riverside,  
San Diego, Imperial  
Flight date(s): 4-1-1959 to 5-30-1959  
Scale: 1:20,000  
Overlap: 60%

Complete Metadata:  
<http://www.library.ucsb.edu/mil/aerial-photography->

Note: Flight covers various parts of Ventura, Los Angeles,  
Orange, Riverside, Imperial, and San Diego counties at  
scales of 1:9,600, 1:12,000, 1:20,000, 1:24,000, and  
1:65,000. See index for details. Imagery acquired from  
Whittier College, January 2013.

- MIL owns frame
- MIL does not own frame





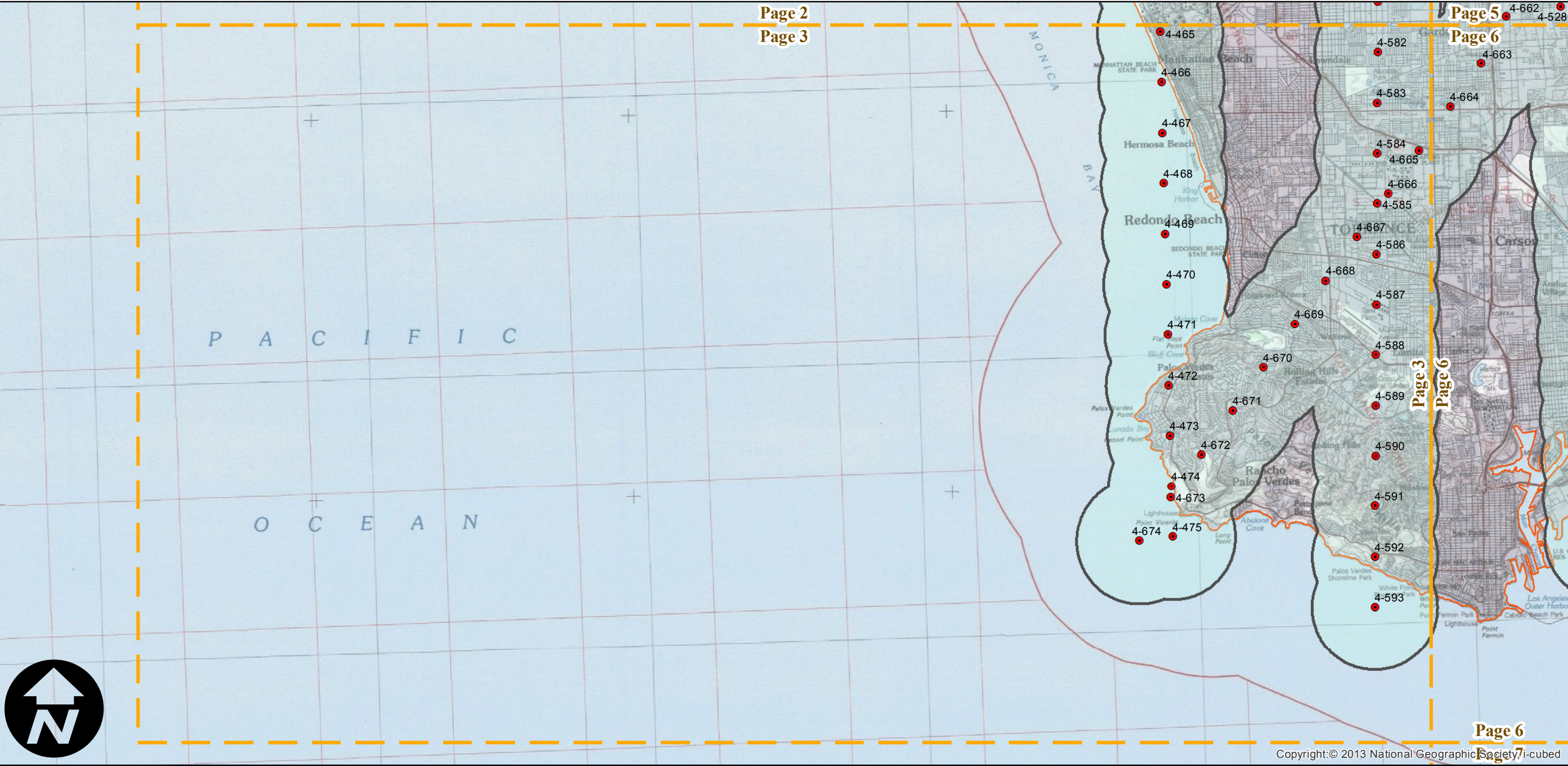
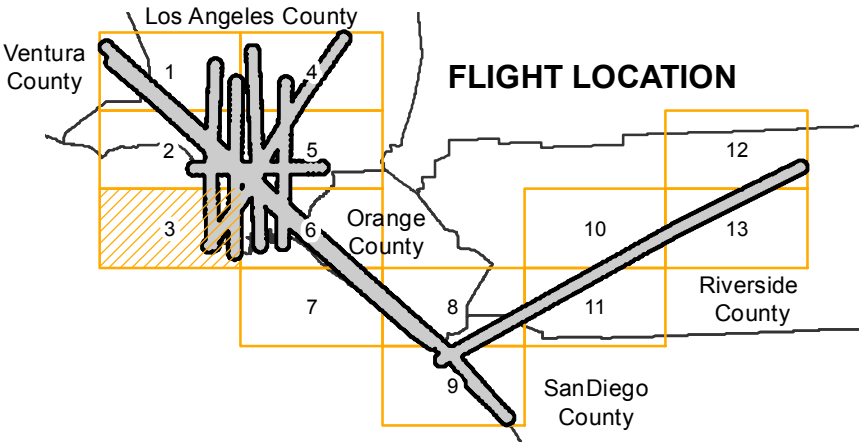
# C-23578 (1:20K)

Counties: Los Angeles, Orange, Ventura, Riverside,  
San Diego, Imperial  
Flight date(s): 4-1-1959 to 5-30-1959  
Scale: 1:20,000  
Overlap: 60%

Complete Metadata:  
<http://www.library.ucsb.edu/mil/aerial-photography->

Note: Flight covers various parts of Ventura, Los Angeles, Orange, Riverside, Imperial, and San Diego counties at scales of 1:9,600, 1:12,000, 1:20,000, 1:24,000, and 1:65,000. See index for details. Imagery acquired from Whittier College, January 2013.

- MIL owns frame
- MIL does not own frame

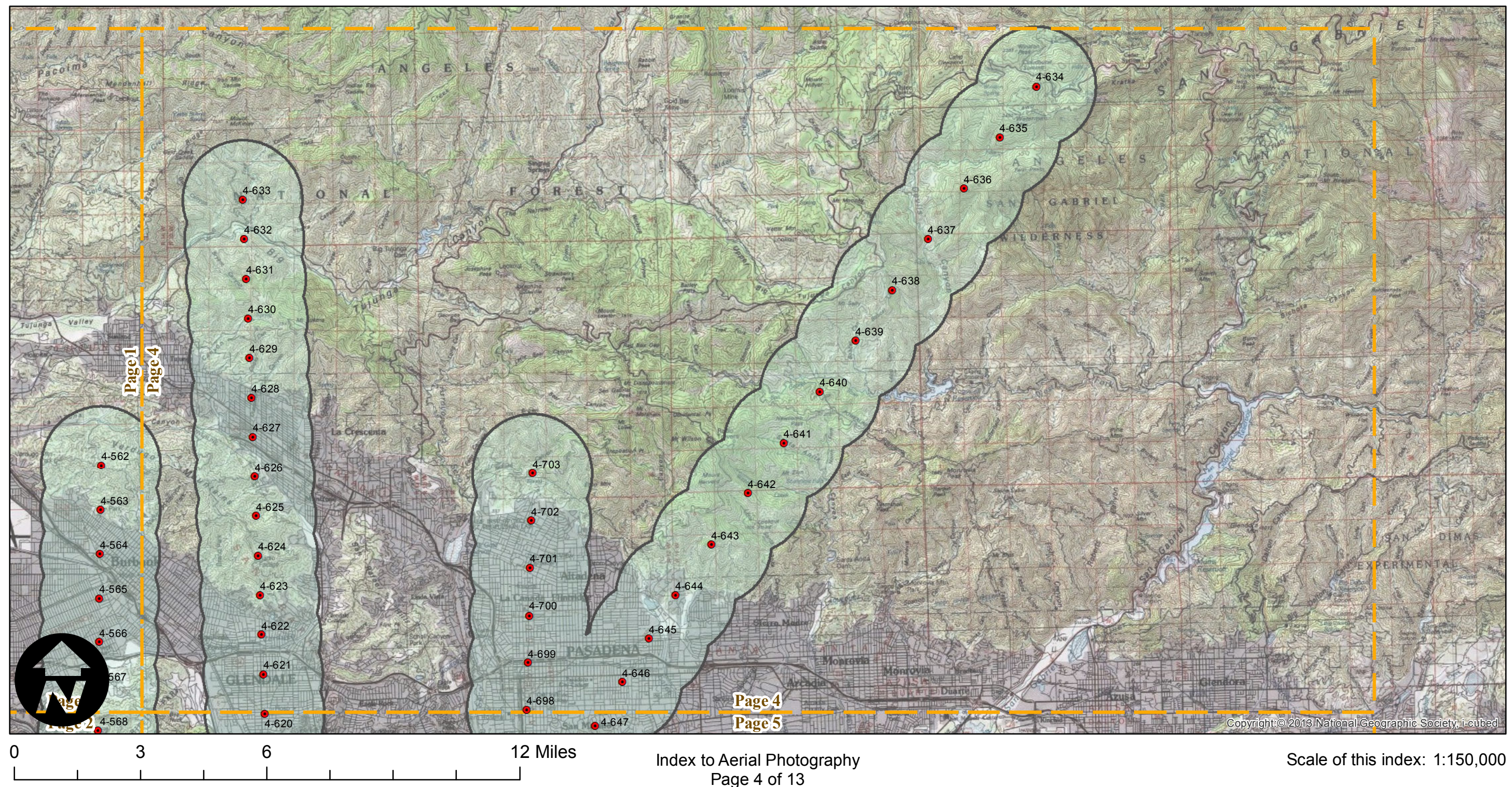
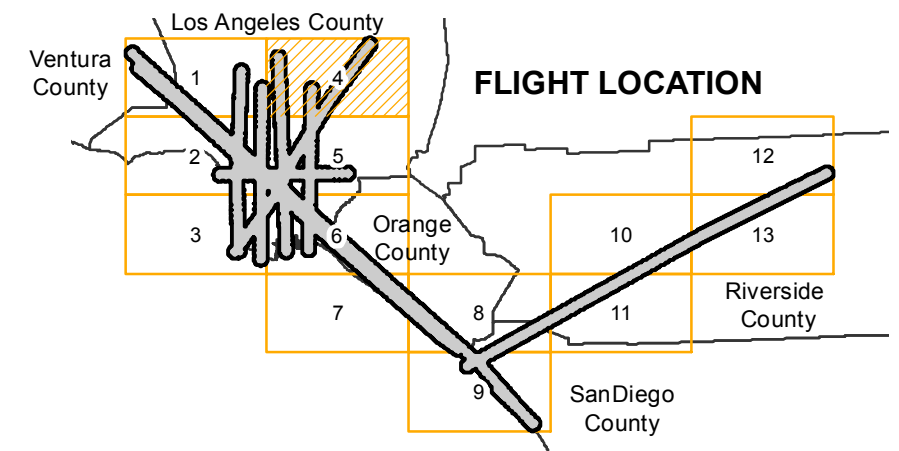




Counties: Los Angeles, Orange, Ventura, Riverside,  
San Diego, Imperial  
Flight date(s): 4-1-1959 to 5-30-1959  
Scale: 1:20,000  
Overlap: 60%

Note: Flight covers various parts of Ventura, Los Angeles, Orange, Riverside, Imperial, and San Diego counties at scales of 1:9,600, 1:12,000, 1:20,000, 1:24,000, and 1:65,000. See index for details. Imagery acquired from Whittier College, January 2013.

- MIL owns frame
- MIL does not own frame





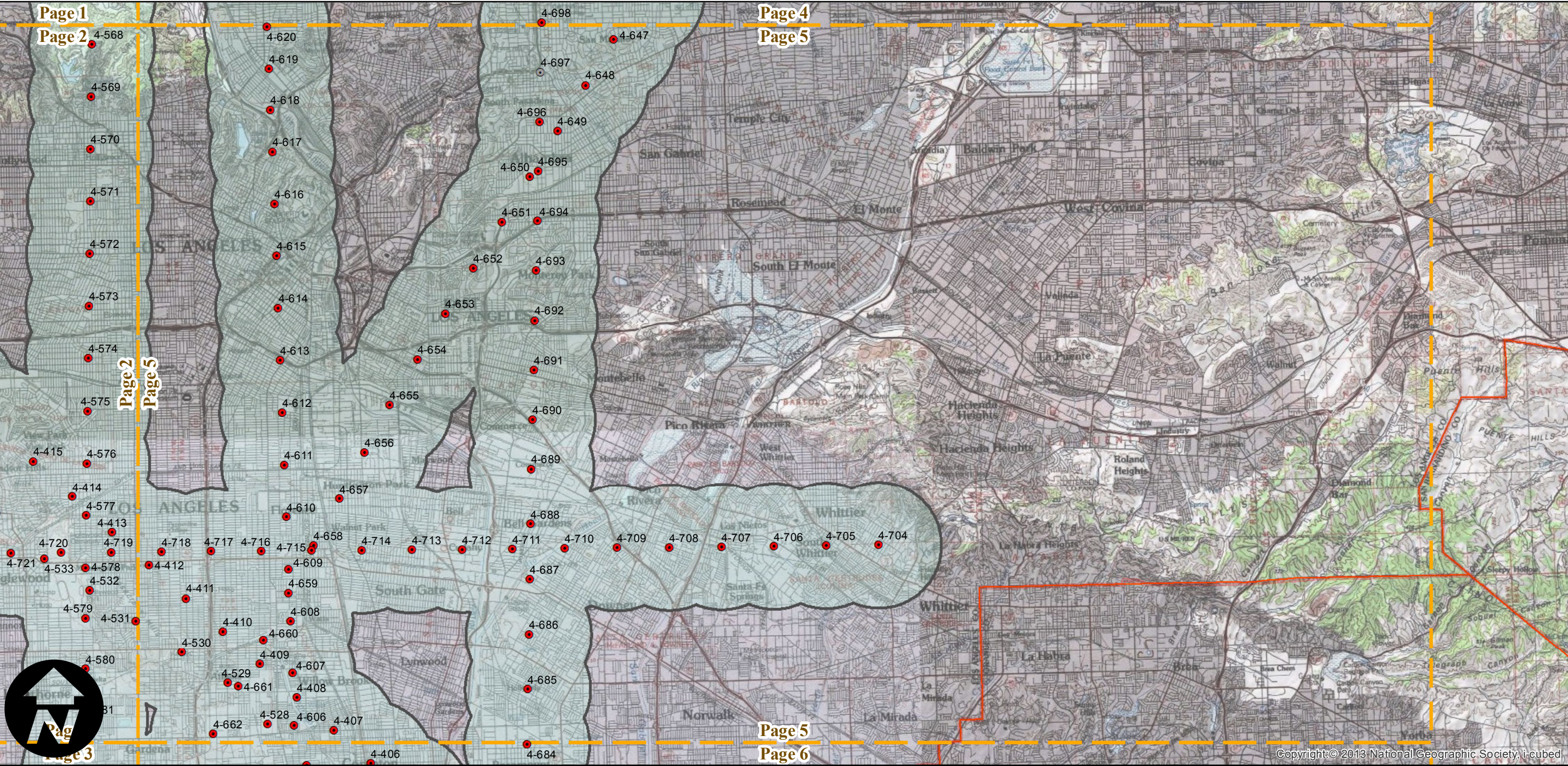
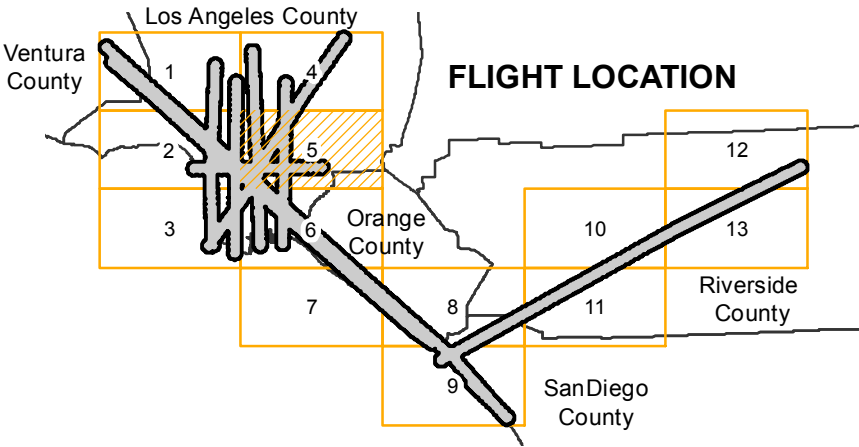
# C-23578 (1:20K)

Counties: Los Angeles, Orange, Ventura, Riverside,  
San Diego, Imperial  
Flight date(s): 4-1-1959 to 5-30-1959  
Scale: 1:20,000  
Overlap: 60%

Complete Metadata:  
<http://www.library.ucsb.edu/mil/aerial-photography->

Note: Flight covers various parts of Ventura, Los Angeles, Orange, Riverside, Imperial, and San Diego counties at scales of 1:9,600, 1:12,000, 1:20,000, 1:24,000, and 1:65,000. See index for details. Imagery acquired from Whittier College, January 2013.

- MIL owns frame
- MIL does not own frame





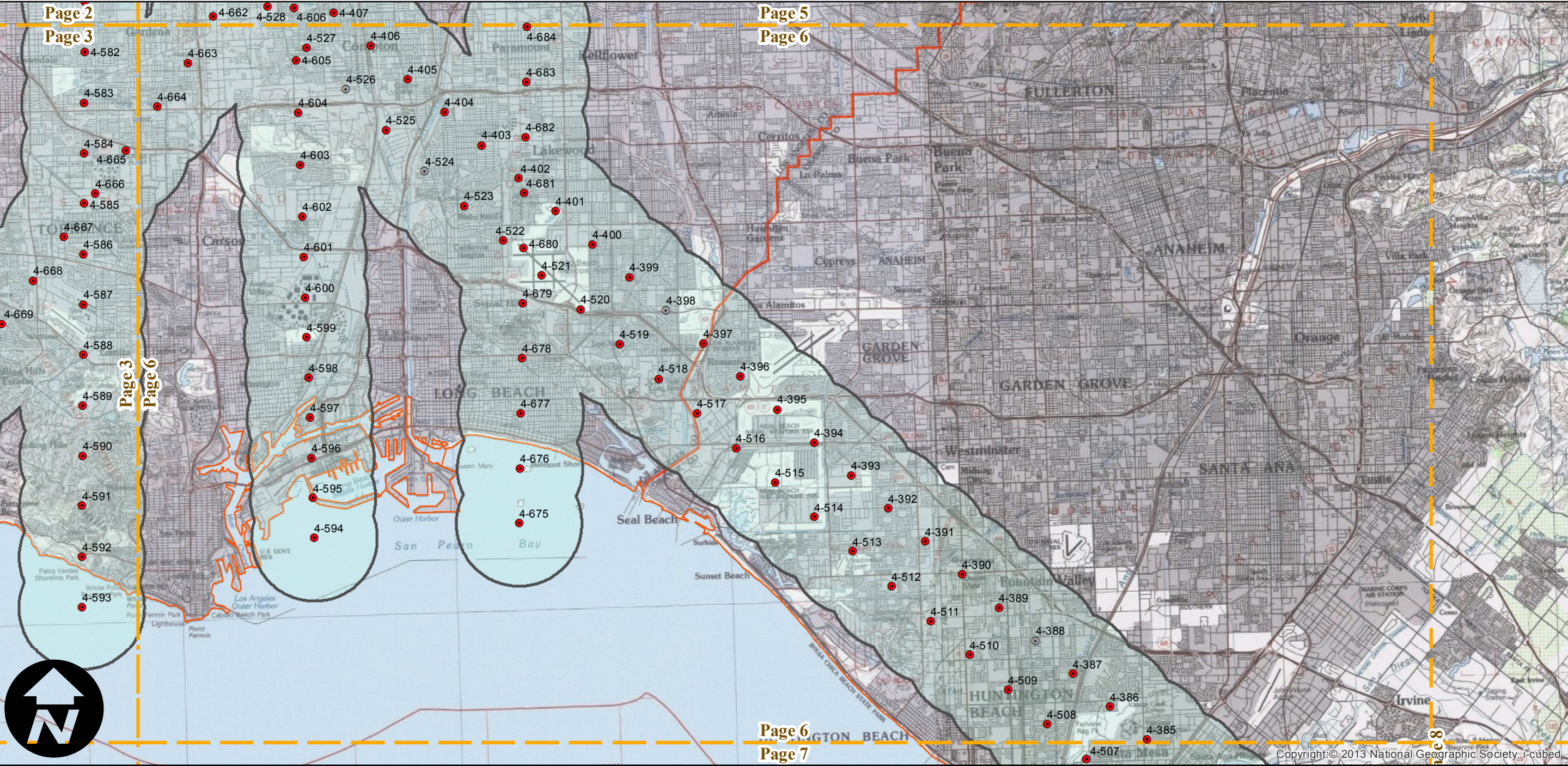
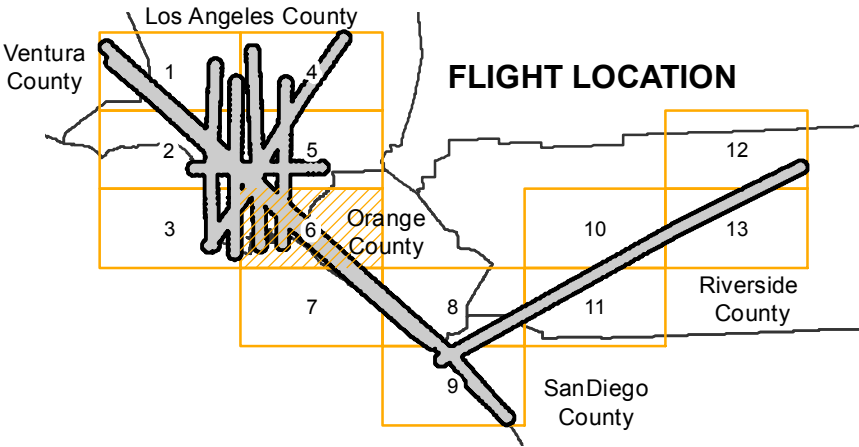
# C-23578 (1:20K)

Counties: Los Angeles, Orange, Ventura, Riverside,  
San Diego, Imperial  
Flight date(s): 4-1-1959 to 5-30-1959  
Scale: 1:20,000  
Overlap: 60%

Complete Metadata:  
<http://www.library.ucsb.edu/mil/aerial-photography->

Note: Flight covers various parts of Ventura, Los Angeles, Orange, Riverside, Imperial, and San Diego counties at scales of 1:9,600, 1:12,000, 1:20,000, 1:24,000, and 1:65,000. See index for details. Imagery acquired from Whittier College, January 2013.

- MIL owns frame
- MIL does not own frame





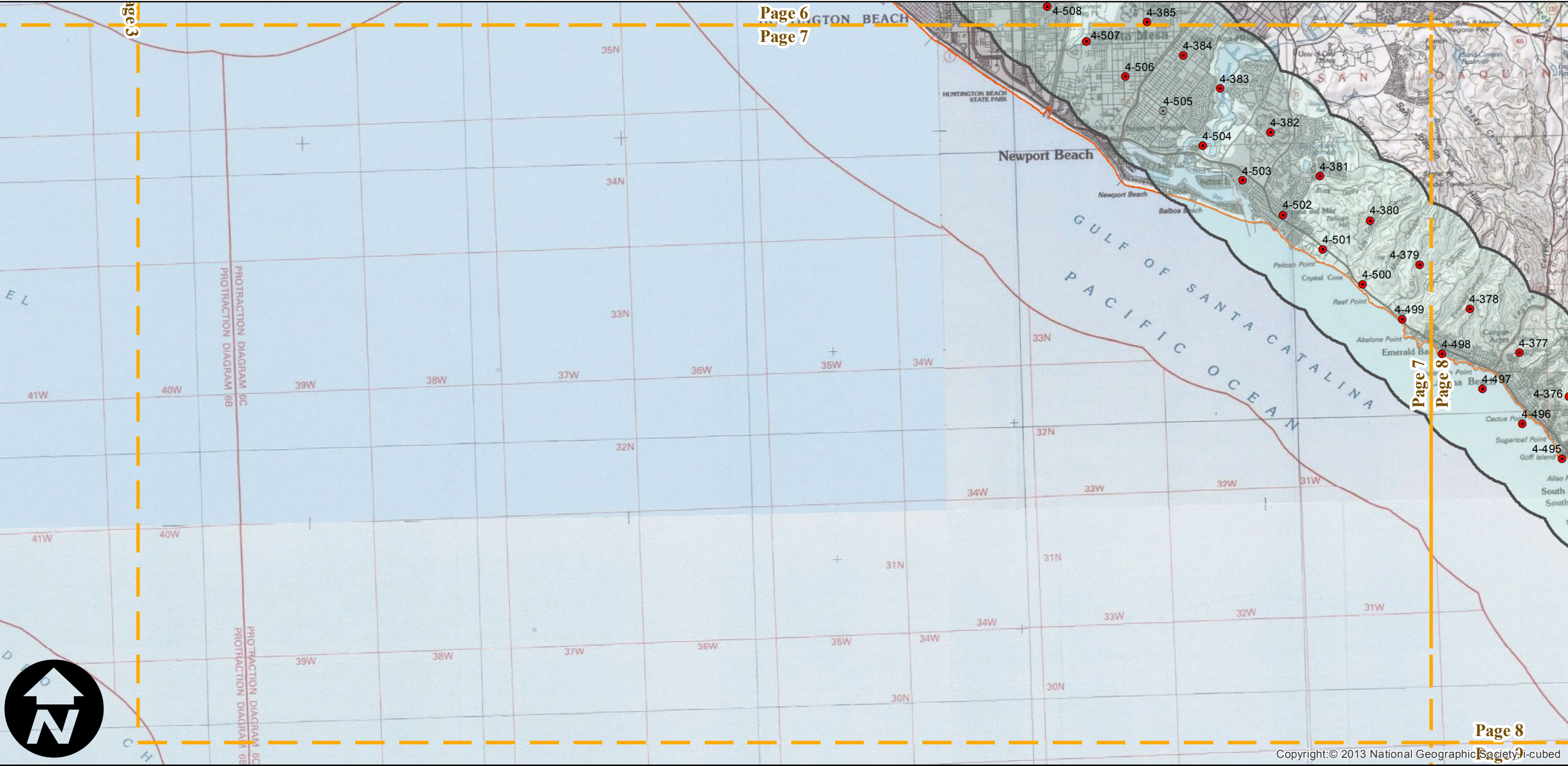
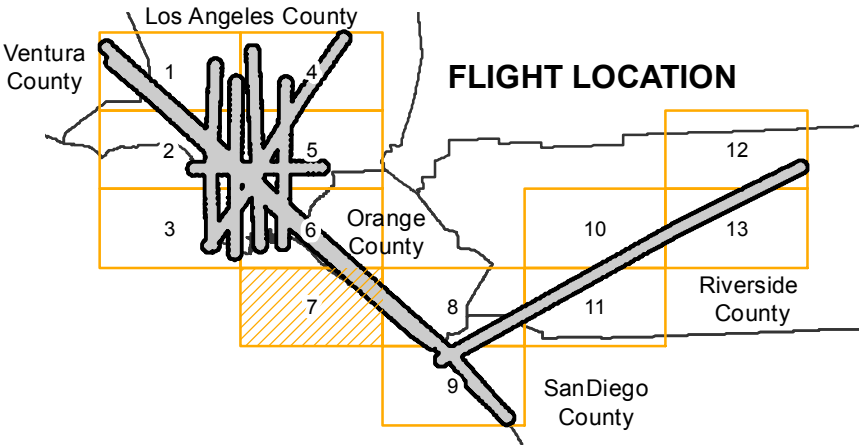
# C-23578 (1:20K)

Counties: Los Angeles, Orange, Ventura, Riverside,  
San Diego, Imperial  
Flight date(s): 4-1-1959 to 5-30-1959  
Scale: 1:20,000  
Overlap: 60%

Complete Metadata:  
<http://www.library.ucsb.edu/mil/aerial-photography->

Note: Flight covers various parts of Ventura, Los Angeles, Orange, Riverside, Imperial, and San Diego counties at scales of 1:9,600, 1:12,000, 1:20,000, 1:24,000, and 1:65,000. See index for details. Imagery acquired from Whittier College, January 2013.

- MIL owns frame
- MIL does not own frame

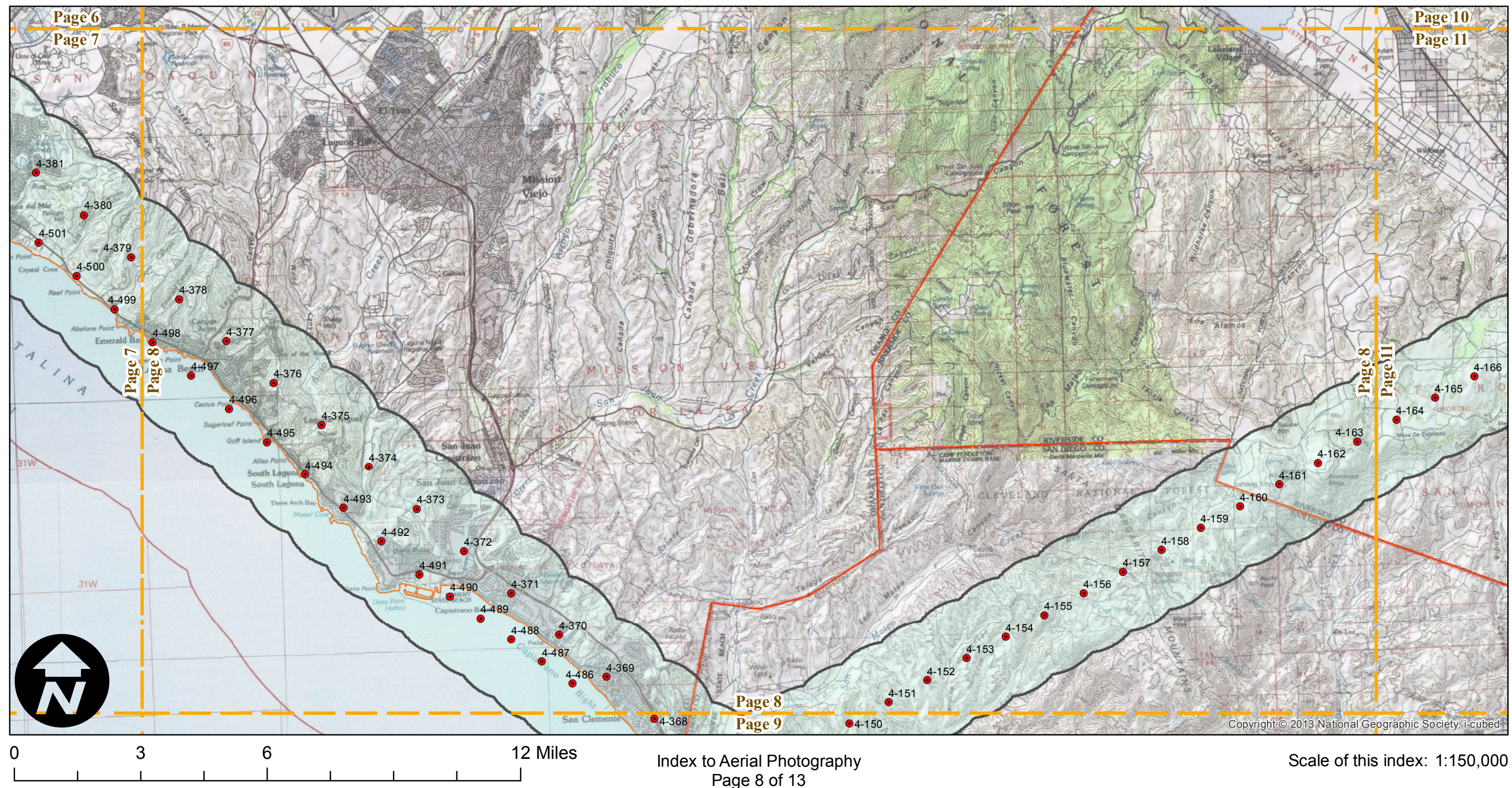
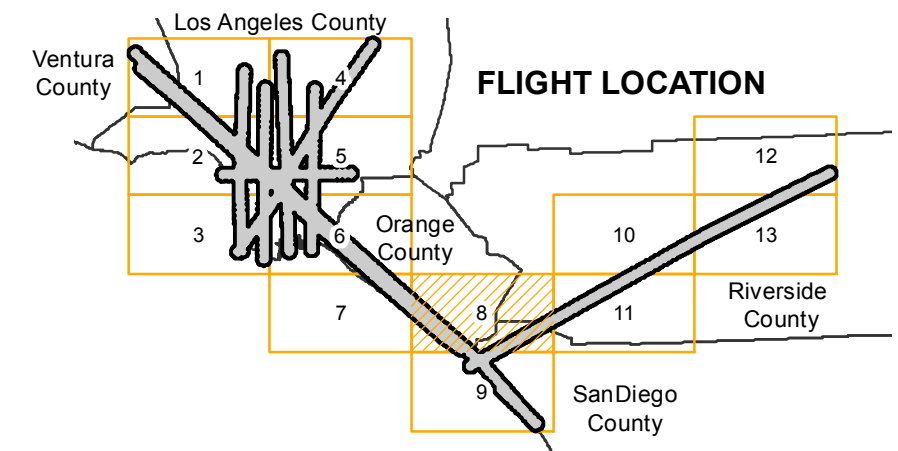




Counties: Los Angeles, Orange, Ventura, Riverside,  
San Diego, Imperial  
Flight date(s): 4-1-1959 to 5-30-1959  
Scale: 1:20,000  
Overlap: 60%

Note: Flight covers various parts of Ventura, Los Angeles, Orange, Riverside, Imperial, and San Diego counties at scales of 1:9,600, 1:12,000, 1:20,000, 1:24,000, and 1:65,000. See index for details. Imagery acquired from Whittier College, January 2013.

- MIL owns frame
- MIL does not own frame





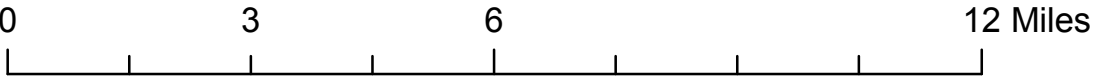
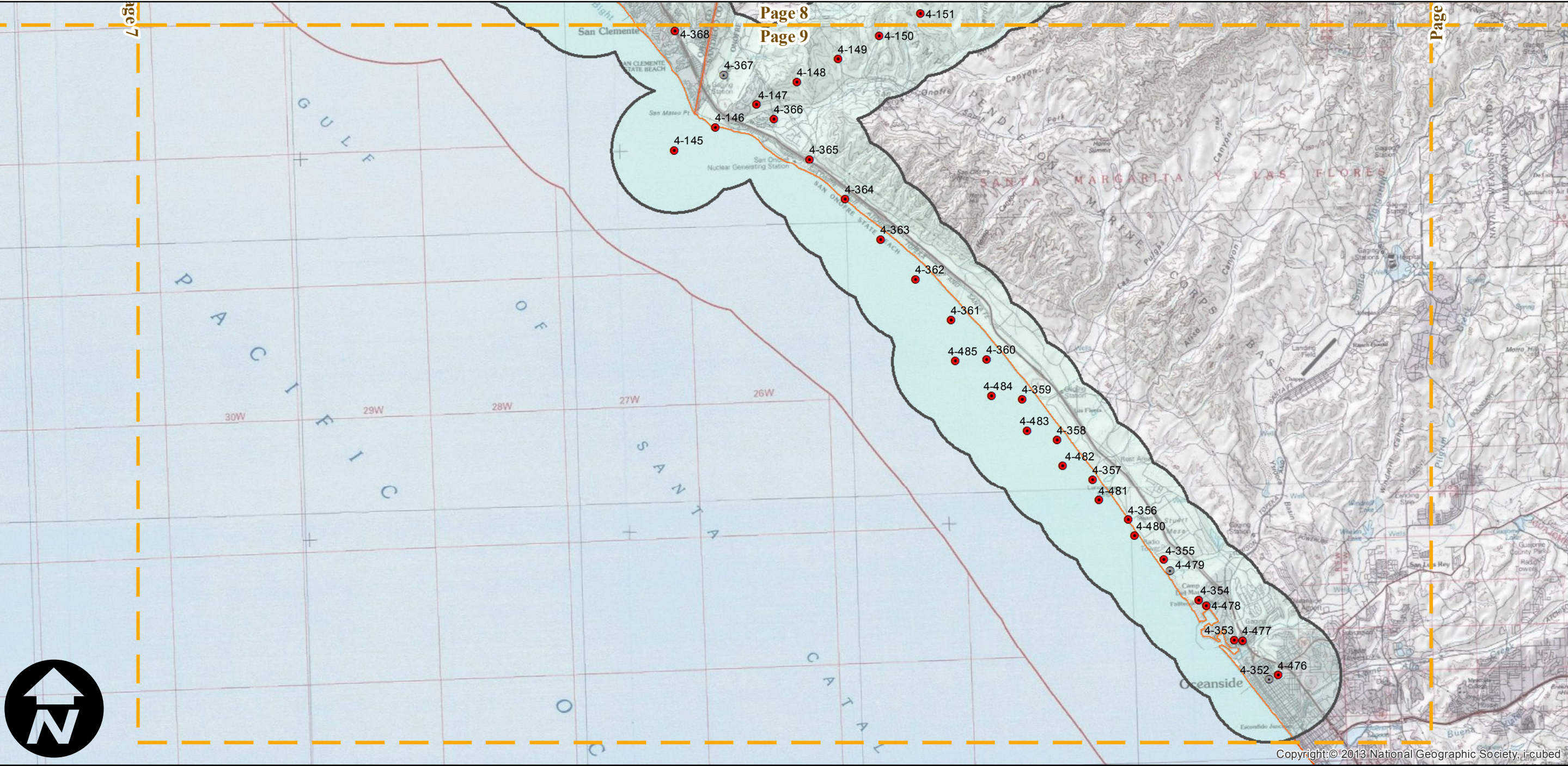
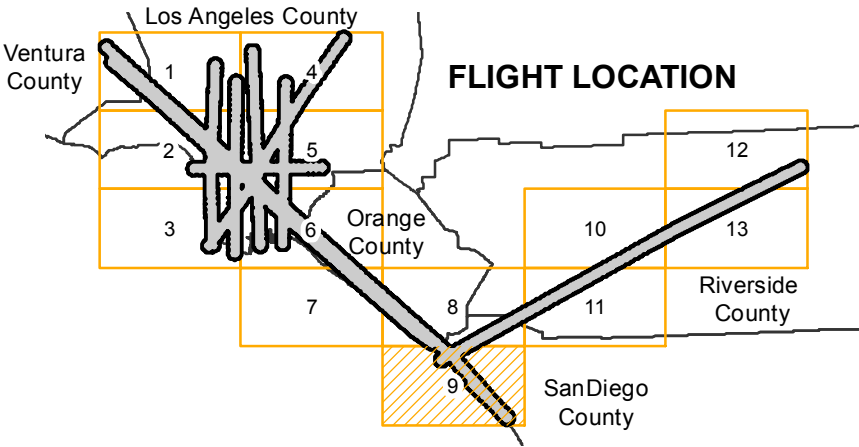
# C-23578 (1:20K)

Counties: Los Angeles, Orange, Ventura, Riverside,  
San Diego, Imperial  
Flight date(s): 4-1-1959 to 5-30-1959  
Scale: 1:20,000  
Overlap: 60%

Complete Metadata:  
<http://www.library.ucsb.edu/mil/aerial-photography->

Note: Flight covers various parts of Ventura, Los Angeles, Orange, Riverside, Imperial, and San Diego counties at scales of 1:9,600, 1:12,000, 1:20,000, 1:24,000, and 1:65,000. See index for details. Imagery acquired from Whittier College, January 2013.

- MIL owns frame
- MIL does not own frame





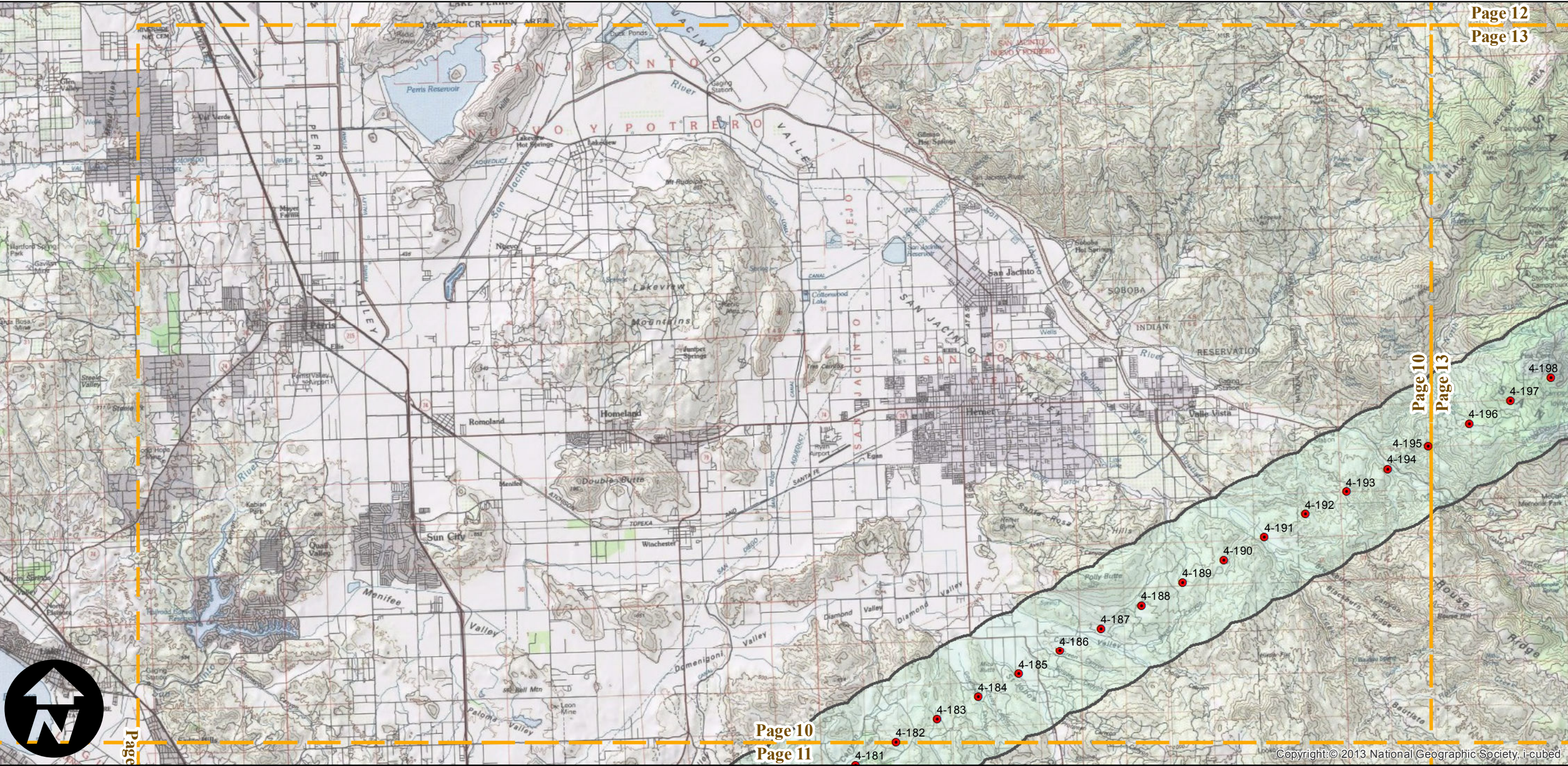
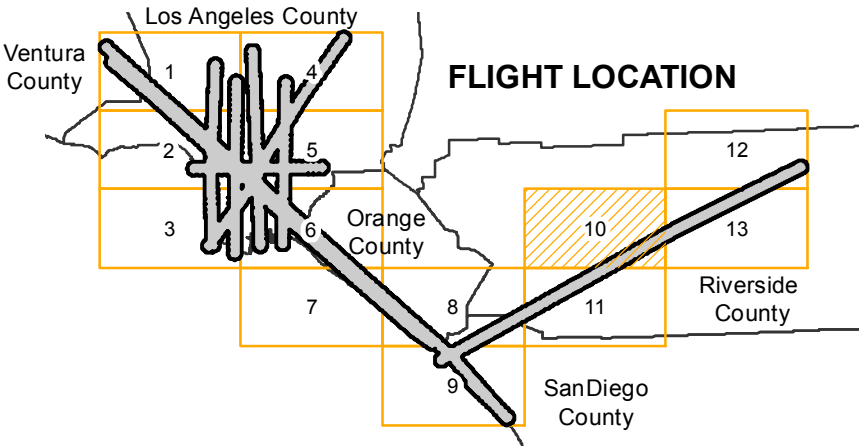
# C-23578 (1:20K)

Counties: Los Angeles, Orange, Ventura, Riverside,  
San Diego, Imperial  
Flight date(s): 4-1-1959 to 5-30-1959  
Scale: 1:20,000  
Overlap: 60%

Complete Metadata:  
<http://www.library.ucsb.edu/mil/aerial-photography->

Note: Flight covers various parts of Ventura, Los Angeles, Orange, Riverside, Imperial, and San Diego counties at scales of 1:9,600, 1:12,000, 1:20,000, 1:24,000, and 1:65,000. See index for details. Imagery acquired from Whittier College, January 2013.

- MIL owns frame
- MIL does not own frame





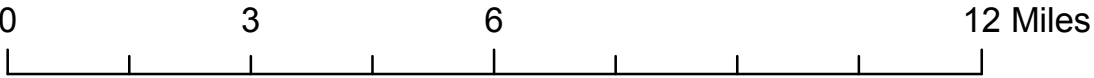
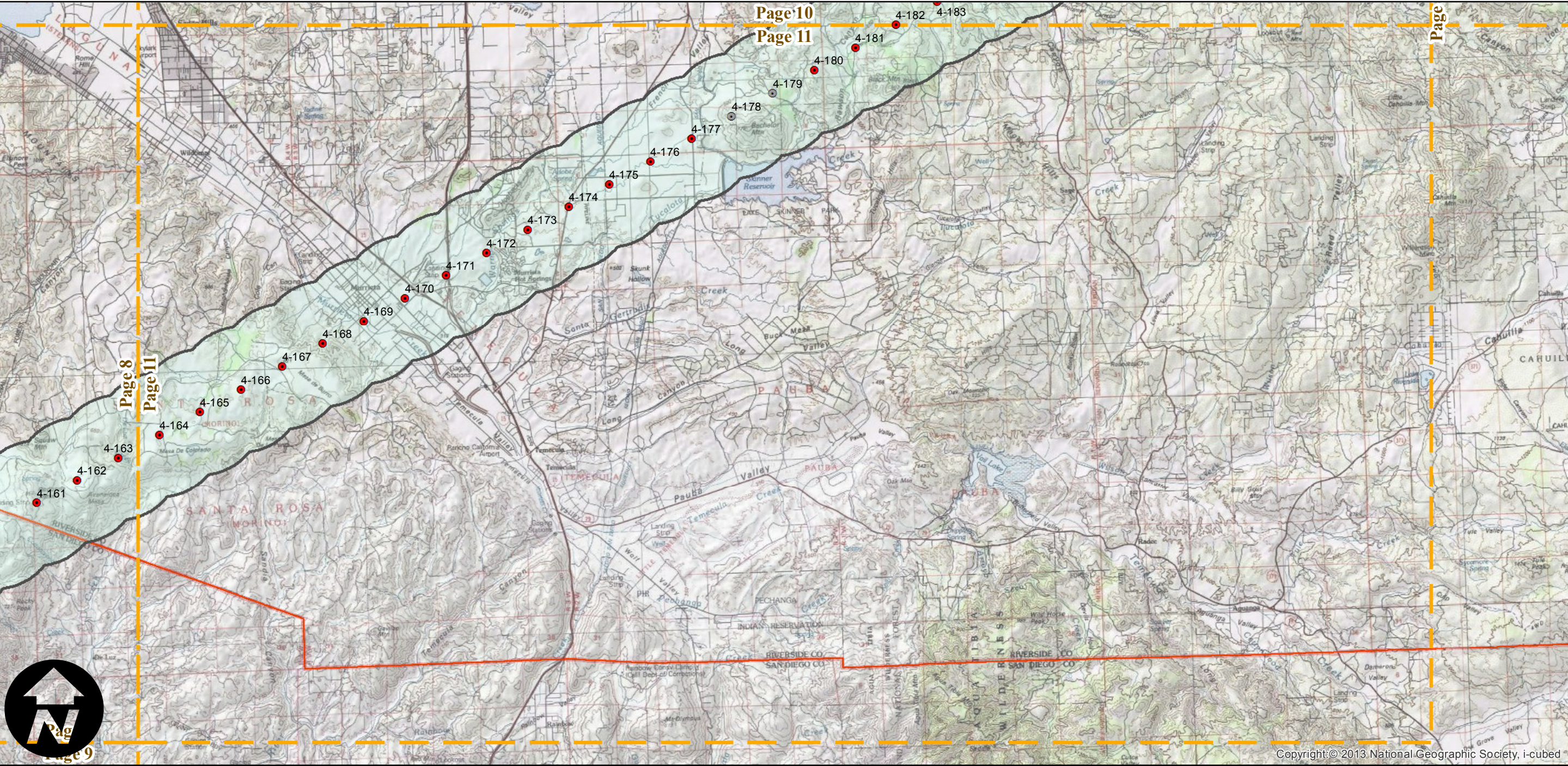
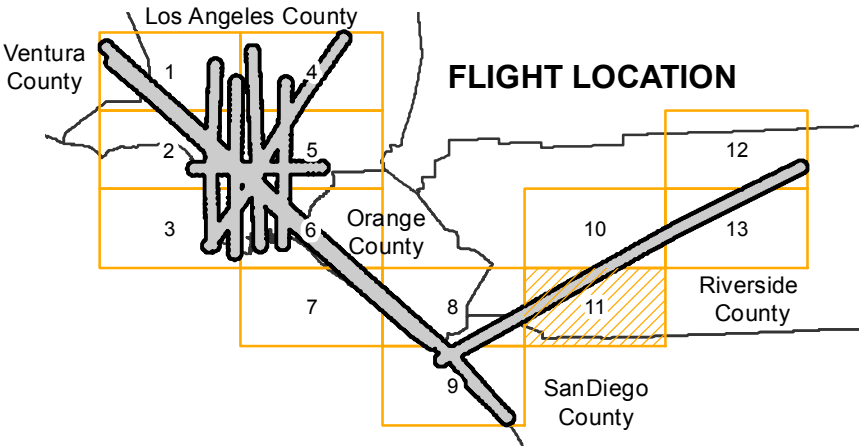
# C-23578 (1:20K)

Counties: Los Angeles, Orange, Ventura, Riverside,  
San Diego, Imperial  
Flight date(s): 4-1-1959 to 5-30-1959  
Scale: 1:20,000  
Overlap: 60%

Complete Metadata:  
<http://www.library.ucsb.edu/mil/aerial-photography->

Note: Flight covers various parts of Ventura, Los Angeles, Orange, Riverside, Imperial, and San Diego counties at scales of 1:9,600, 1:12,000, 1:20,000, 1:24,000, and 1:65,000. See index for details. Imagery acquired from Whittier College, January 2013.

- MIL owns frame
- MIL does not own frame





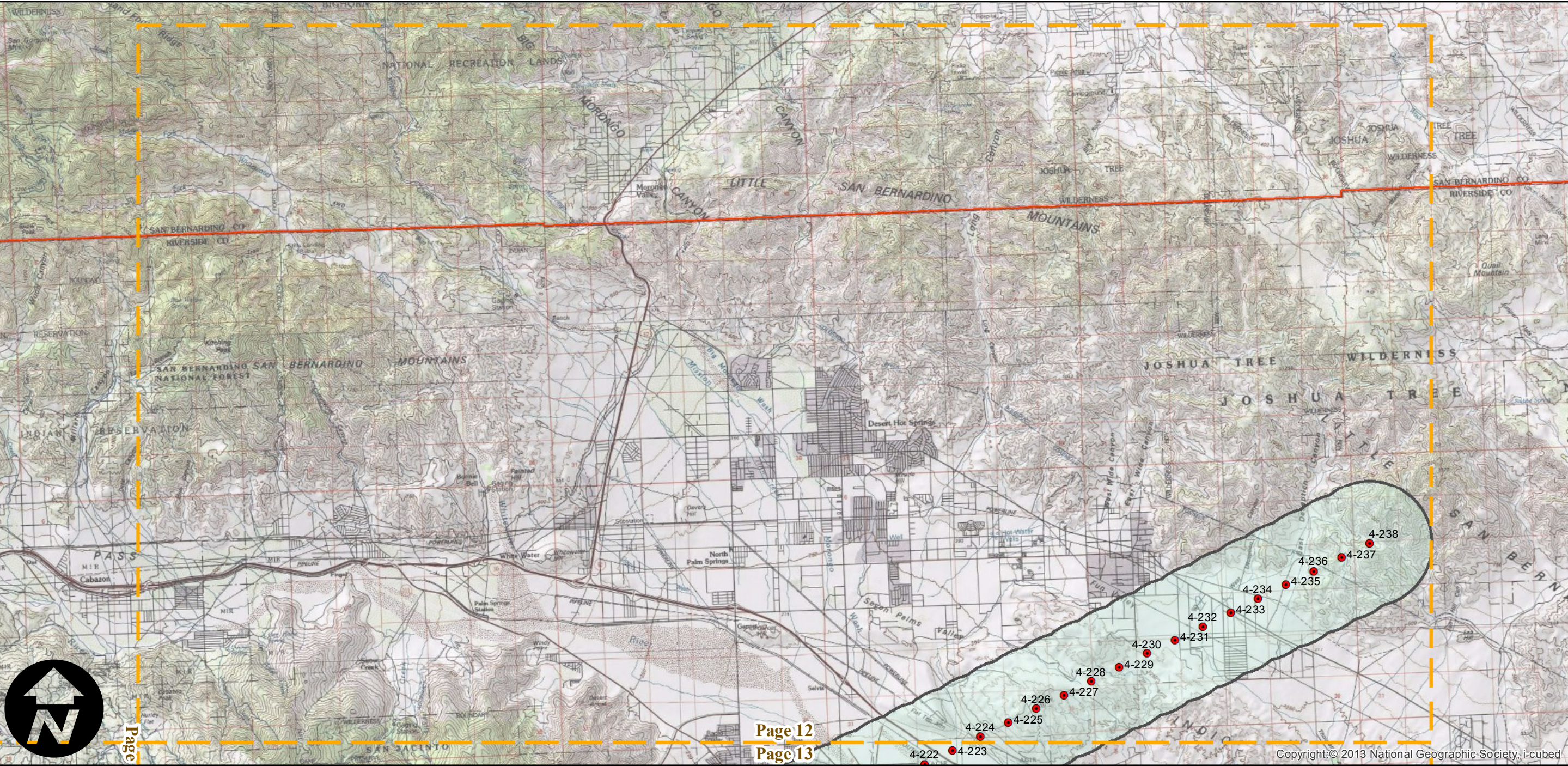
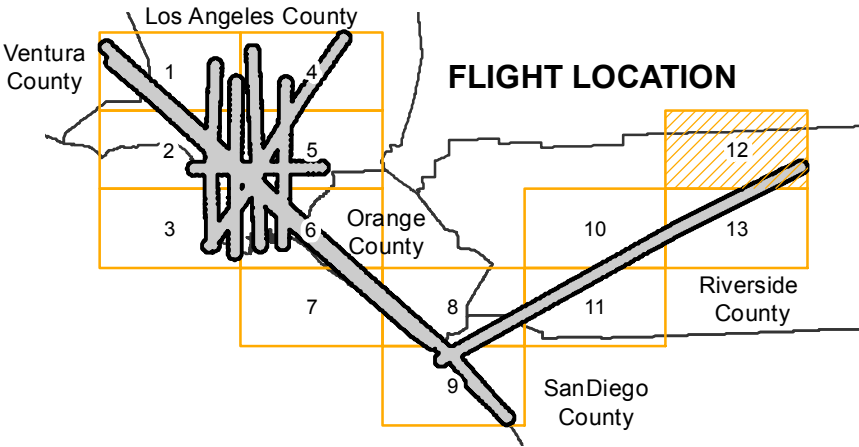
# C-23578 (1:20K)

Counties: Los Angeles, Orange, Ventura, Riverside,  
San Diego, Imperial  
Flight date(s): 4-1-1959 to 5-30-1959  
Scale: 1:20,000  
Overlap: 60%

Complete Metadata:  
<http://www.library.ucsb.edu/mil/aerial-photography->

Note: Flight covers various parts of Ventura, Los Angeles, Orange, Riverside, Imperial, and San Diego counties at scales of 1:9,600, 1:12,000, 1:20,000, 1:24,000, and 1:65,000. See index for details. Imagery acquired from Whittier College, January 2013.

- MIL owns frame
- MIL does not own frame





# C-23578 (1:20K)

Counties: Los Angeles, Orange, Ventura, Riverside,  
San Diego, Imperial  
Flight date(s): 4-1-1959 to 5-30-1959  
Scale: 1:20,000  
Overlap: 60%

Complete Metadata:  
<http://www.library.ucsb.edu/mil/aerial-photography->

Note: Flight covers various parts of Ventura, Los Angeles, Orange, Riverside, Imperial, and San Diego counties at scales of 1:9,600, 1:12,000, 1:20,000, 1:24,000, and 1:65,000. See index for details. Imagery acquired from Whittier College, January 2013.

- MIL owns frame
- MIL does not own frame

