

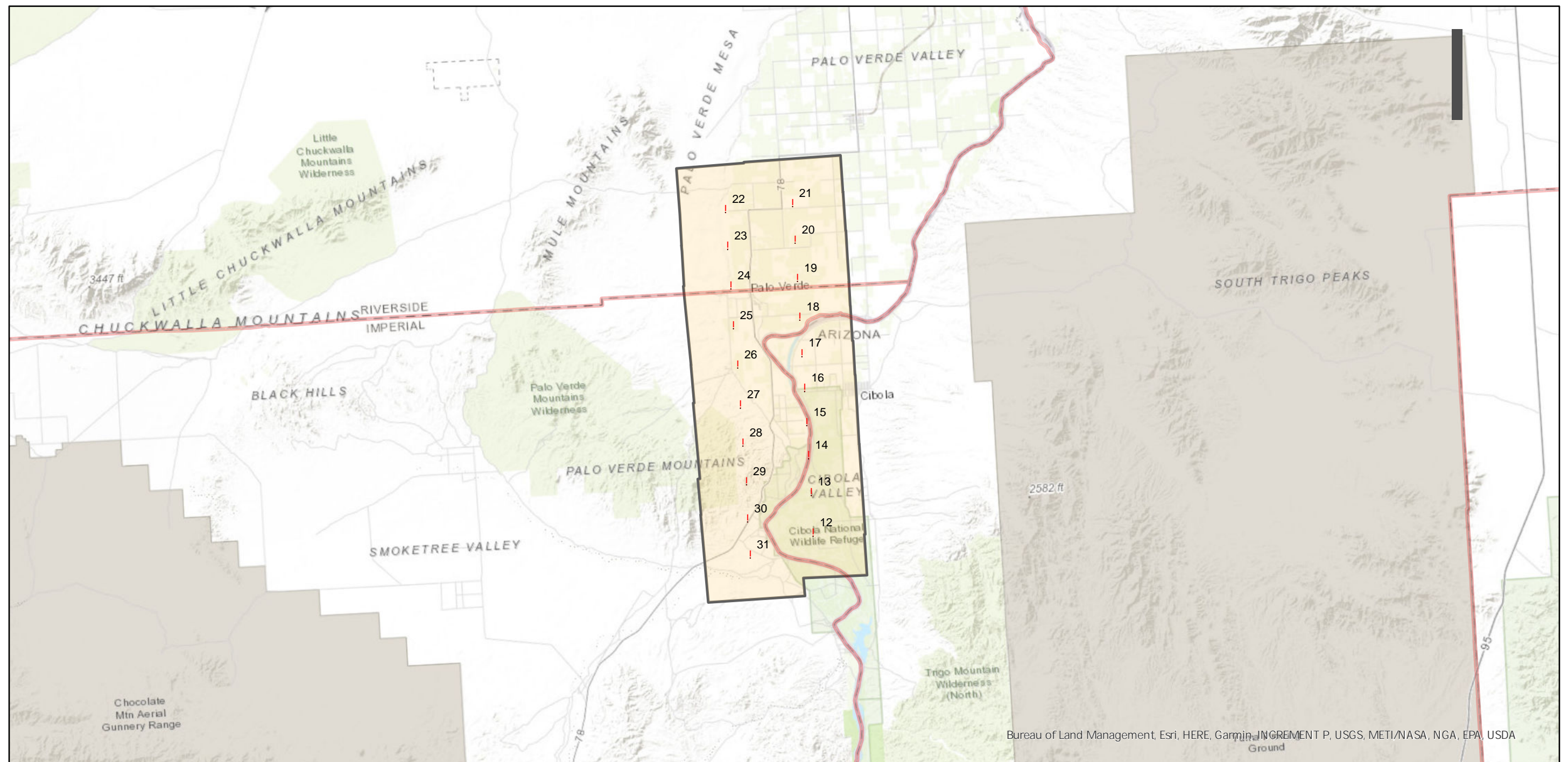
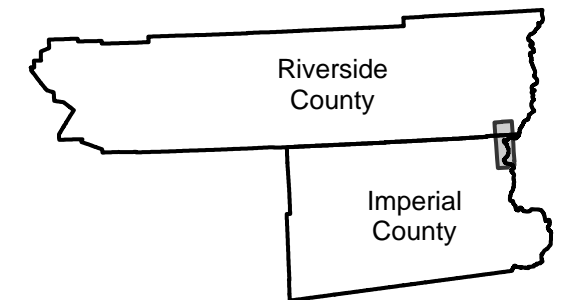
# C-23566

Counties: Imperial, Riverside  
Flight date(s): 06-10-1959 to 06-13-1959  
Scale: 1:24,000  
Overlap: 60%

Complete Metadata:  
<https://www.library.ucsb.edu/src/airphotos/aerial-photography-information>

Note: Imagery of the Lower Palo Verde Valley. Coverage includes the Colorado River as it borders Arizona. Partial frame coverage of the Cibola Valley in Arizona. Frames 1 through 11 duplicate coverage shared by flight line frames 12-21 and flight line frames 22 through 31.

## FLIGHT LOCATION



0 4 8 16 Miles

Index to Aerial Photography  
Page 1 of 1

Scale of this index: 1:250,000