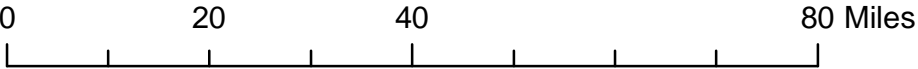
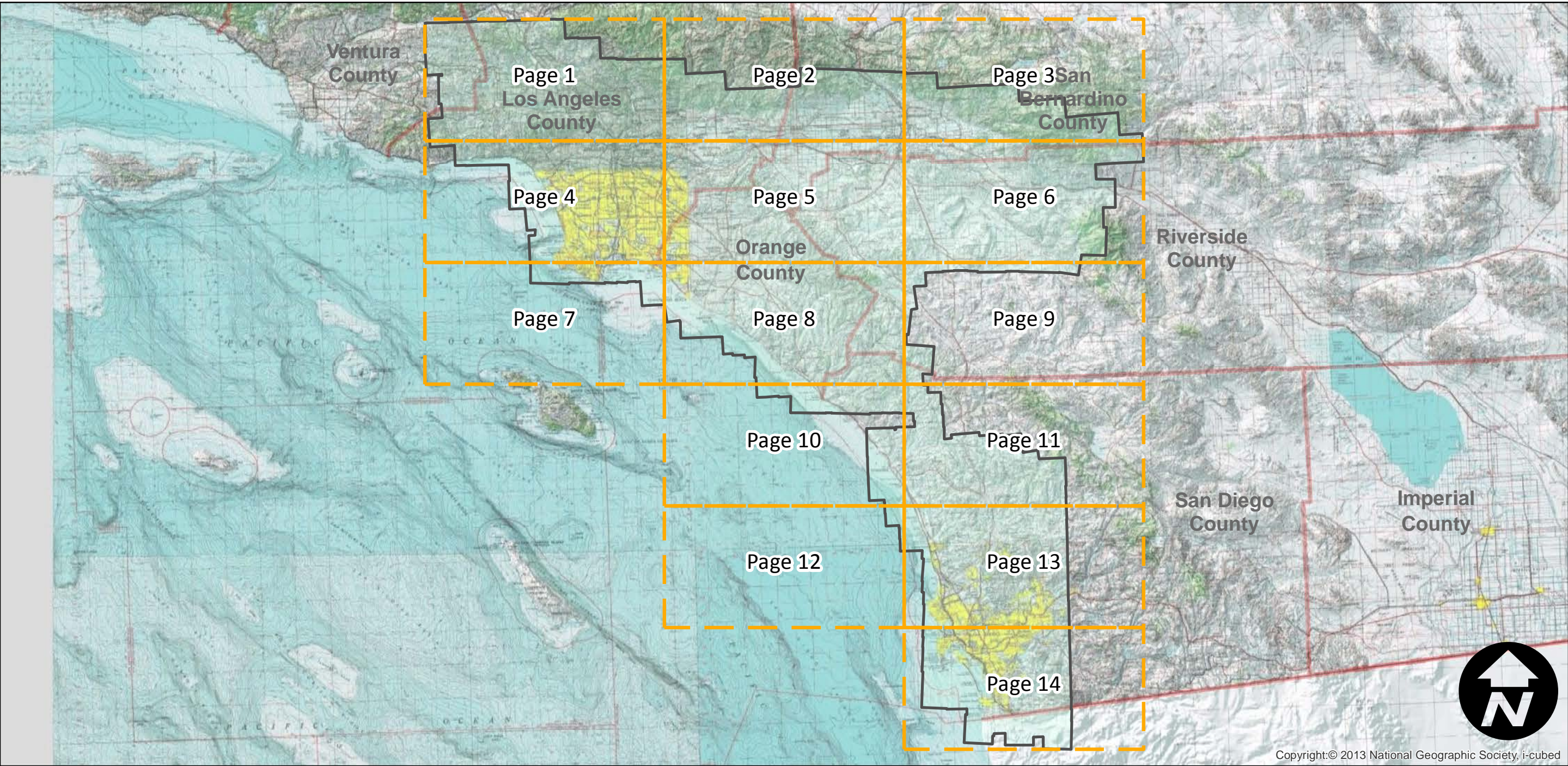
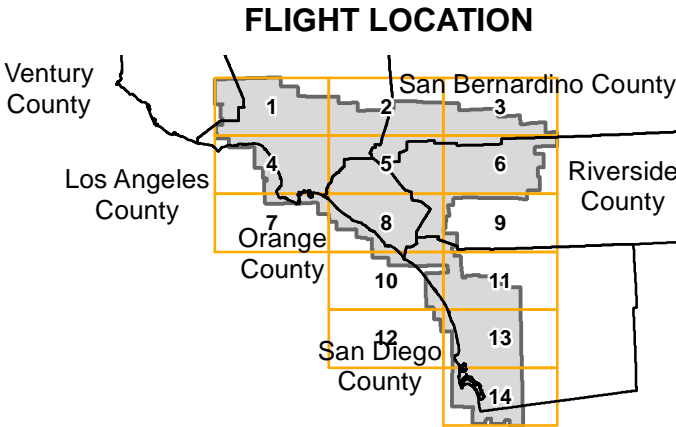


C-23023

Counties: Los Angeles, Orange, Riverside,
San Bernardino, San Diego, Ventura
Flight date(s): 01-01-1958 to 03-31-1958
Scale: 1:36,000
Overlap: 60%

Note: Roll number 5 stored at Annex 2 due to vinegar
syndrome. Imagery acquired from Whittier College,
January 2013.

Complete Metadata:
<http://www.library.ucsb.edu/mil/aerial-photography-tools>



Index to Aerial Photography
Page Key

Scale of this index: 1:1,200,000

Copyright:© 2013 National Geographic Society, i-cubed

C-23023

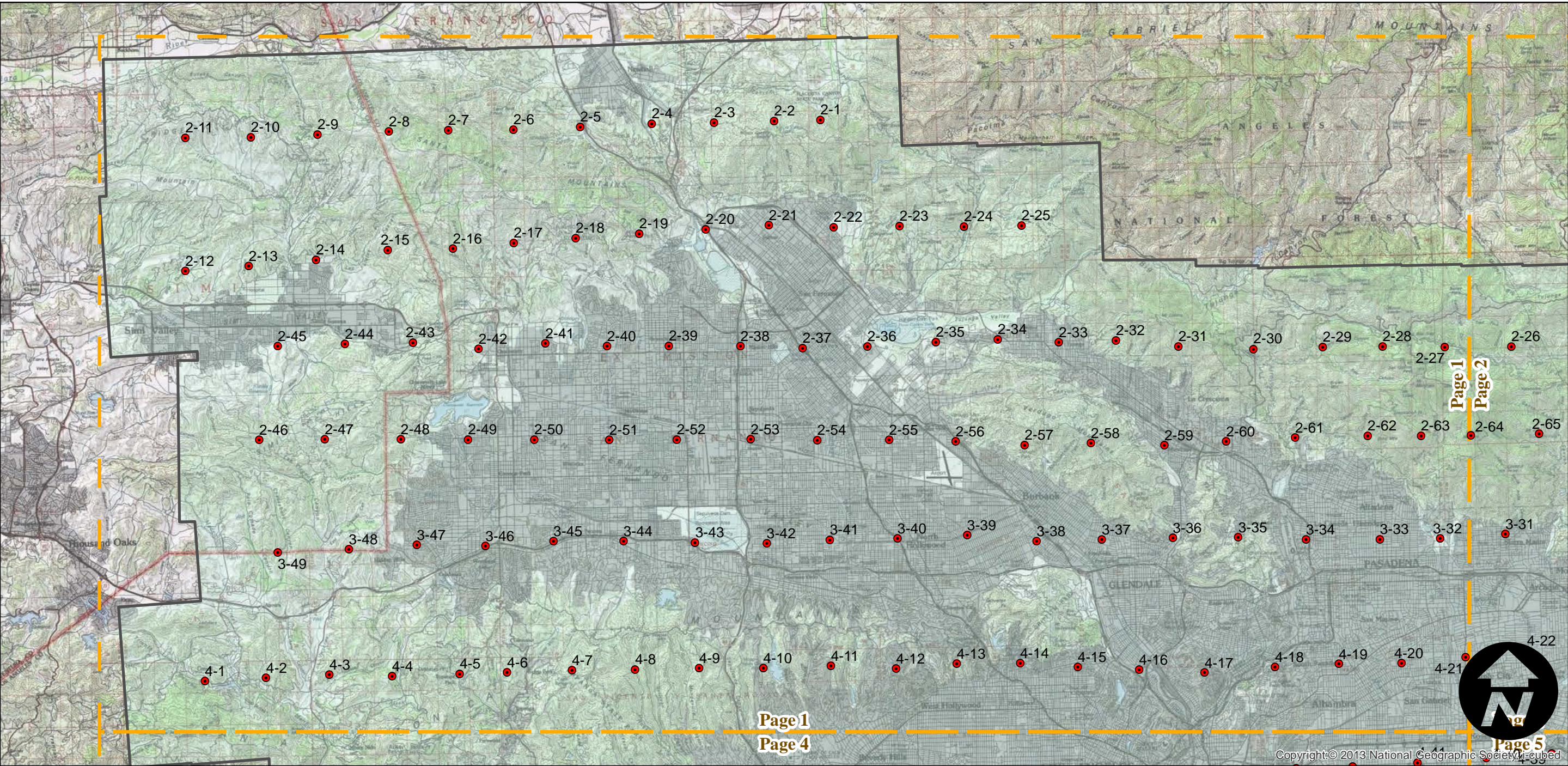
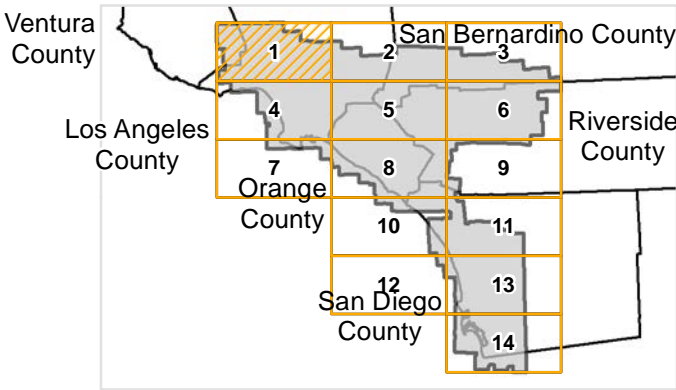
Counties: Los Angeles, Orange, Riverside,
San Bernardino, San Diego, Ventura
Flight date(s): 01-01-1958 to 03-31-1958
Scale: 1:36,000
Overlap: 60%

Complete Metadata:
<http://www.library.ucsb.edu/mil/aerial-photography-tools>

Note: Roll number 5 stored at Annex 2 due to vinegar syndrome. Imagery acquired from Whittier College, January 2013.

- MIL owns frame
- MIL does not own frame

FLIGHT LOCATION



0 3 6 12 Miles

Index to Aerial Photography
Page 1 of 14

Scale of this index: 1:210,000

C-23023

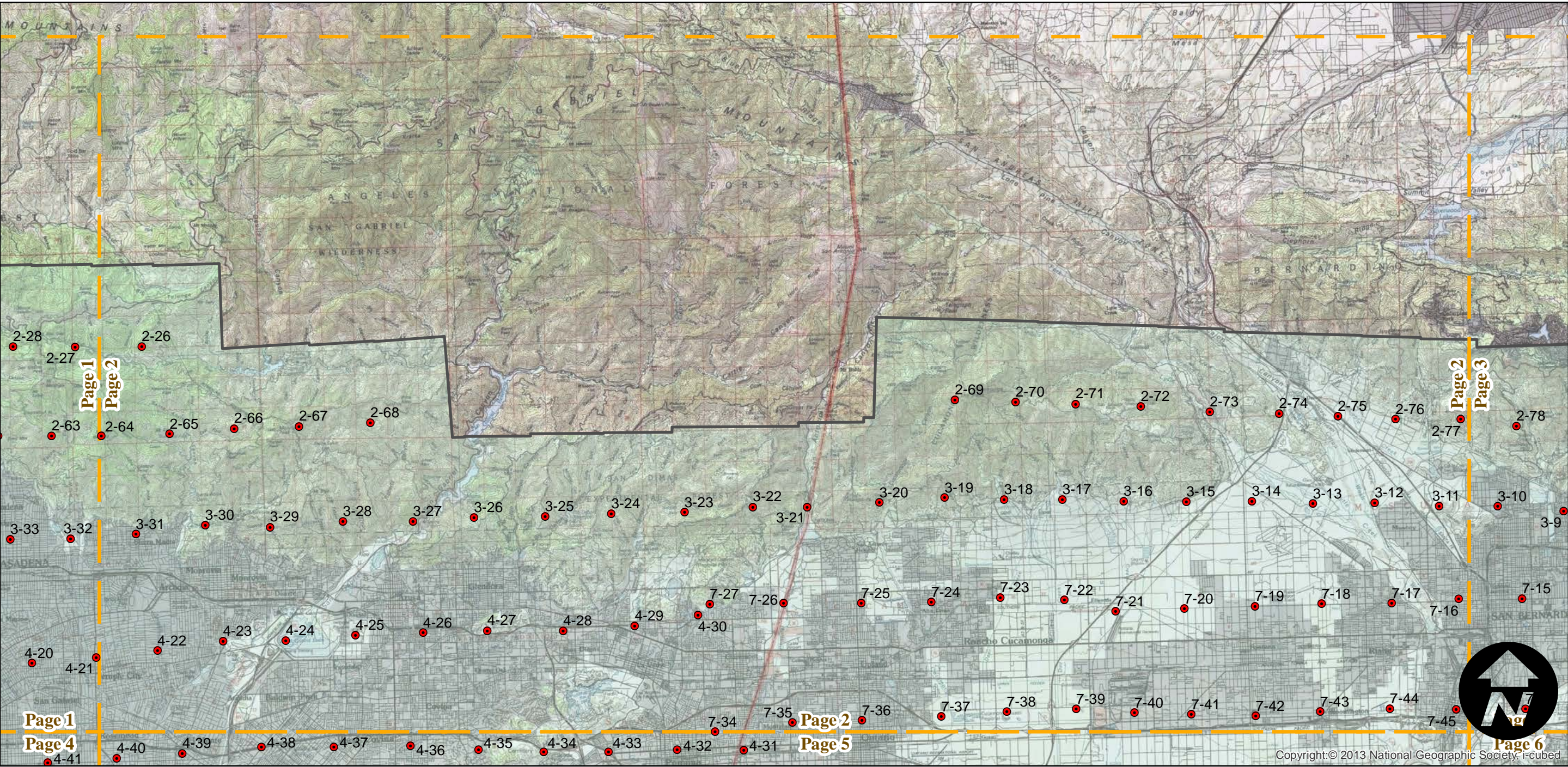
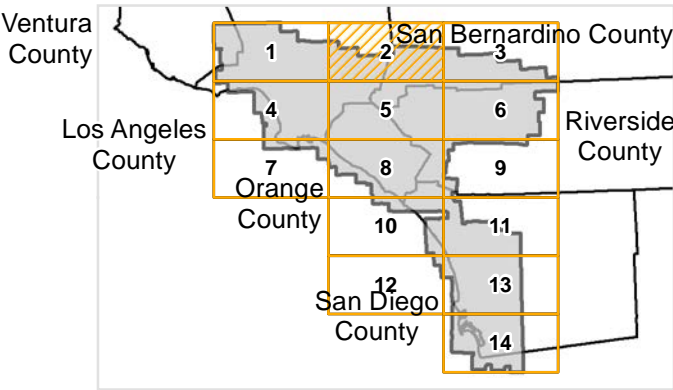
Counties: Los Angeles, Orange, Riverside,
San Bernardino, San Diego, Ventura
Flight date(s): 01-01-1958 to 03-31-1958
Scale: 1:36,000
Overlap: 60%

Complete Metadata:
<http://www.library.ucsb.edu/mil/aerial-photography-tools>

Note: Roll number 5 stored at Annex 2 due to vinegar syndrome. Imagery acquired from Whittier College, January 2013.

- MIL owns frame
- MIL does not own frame

FLIGHT LOCATION



0 3 6 12 Miles

Index to Aerial Photography
Page 2 of 14

Scale of this index: 1:210,000

C-23023

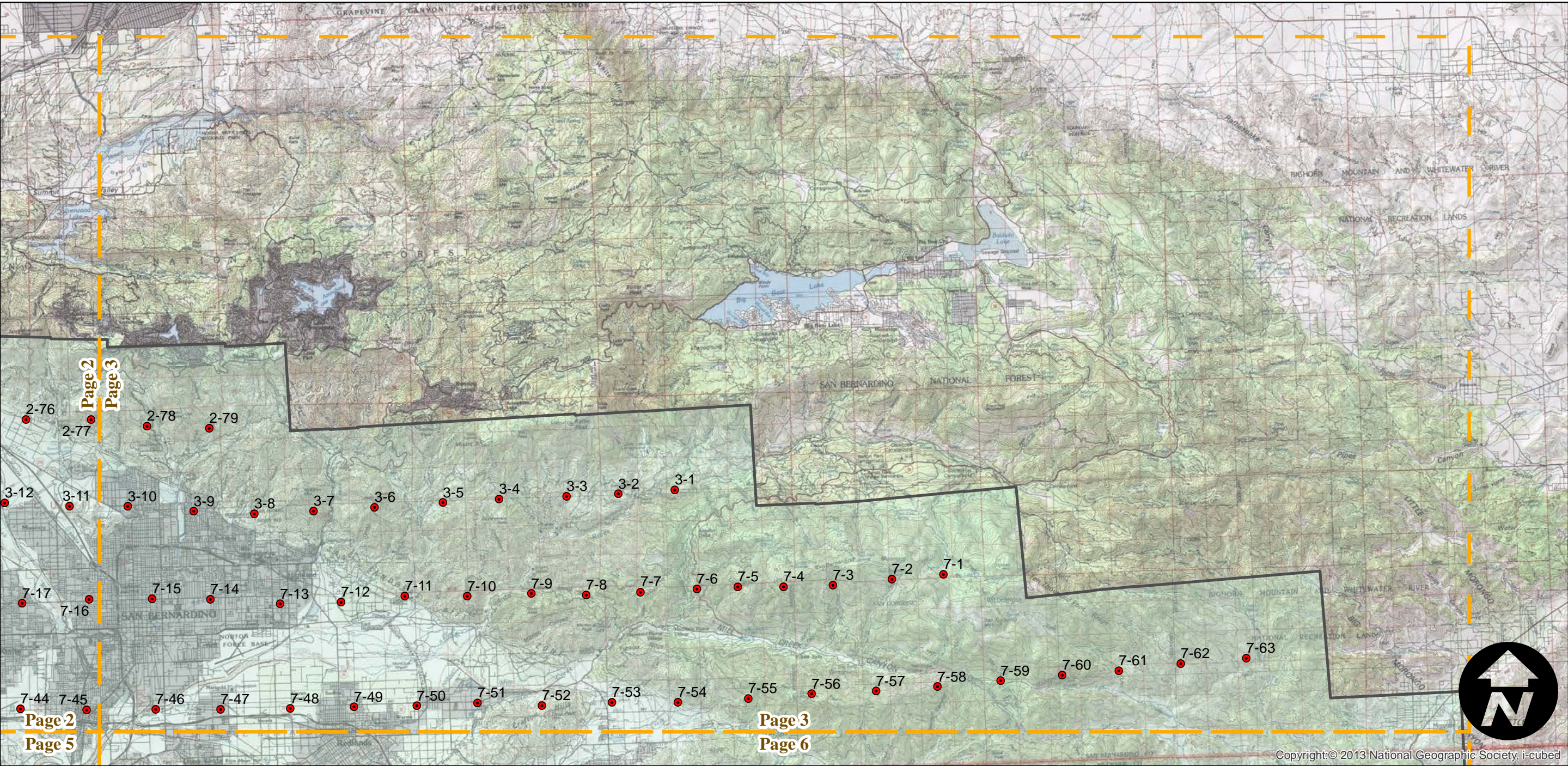
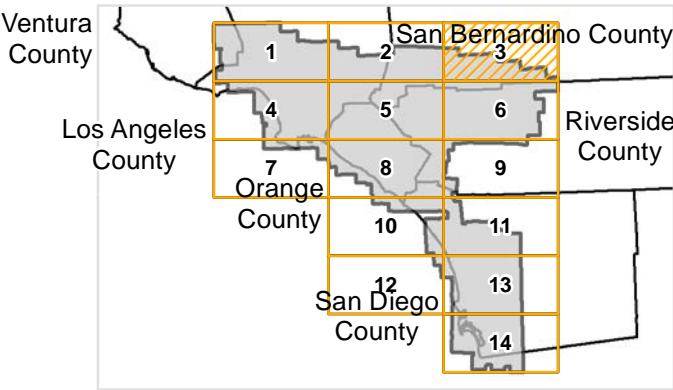
Counties: Los Angeles, Orange, Riverside,
San Bernardino, San Diego, Ventura
Flight date(s): 01-01-1958 to 03-31-1958
Scale: 1:36,000
Overlap: 60%

Complete Metadata:
<http://www.library.ucsb.edu/mil/aerial-photography-tools>

Note: Roll number 5 stored at Annex 2 due to vinegar syndrome. Imagery acquired from Whittier College, January 2013.

- MIL owns frame
- MIL does not own frame

FLIGHT LOCATION



0 3 6 12 Miles

Index to Aerial Photography
Page 3 of 14

Scale of this index: 1:210,000

C-23023

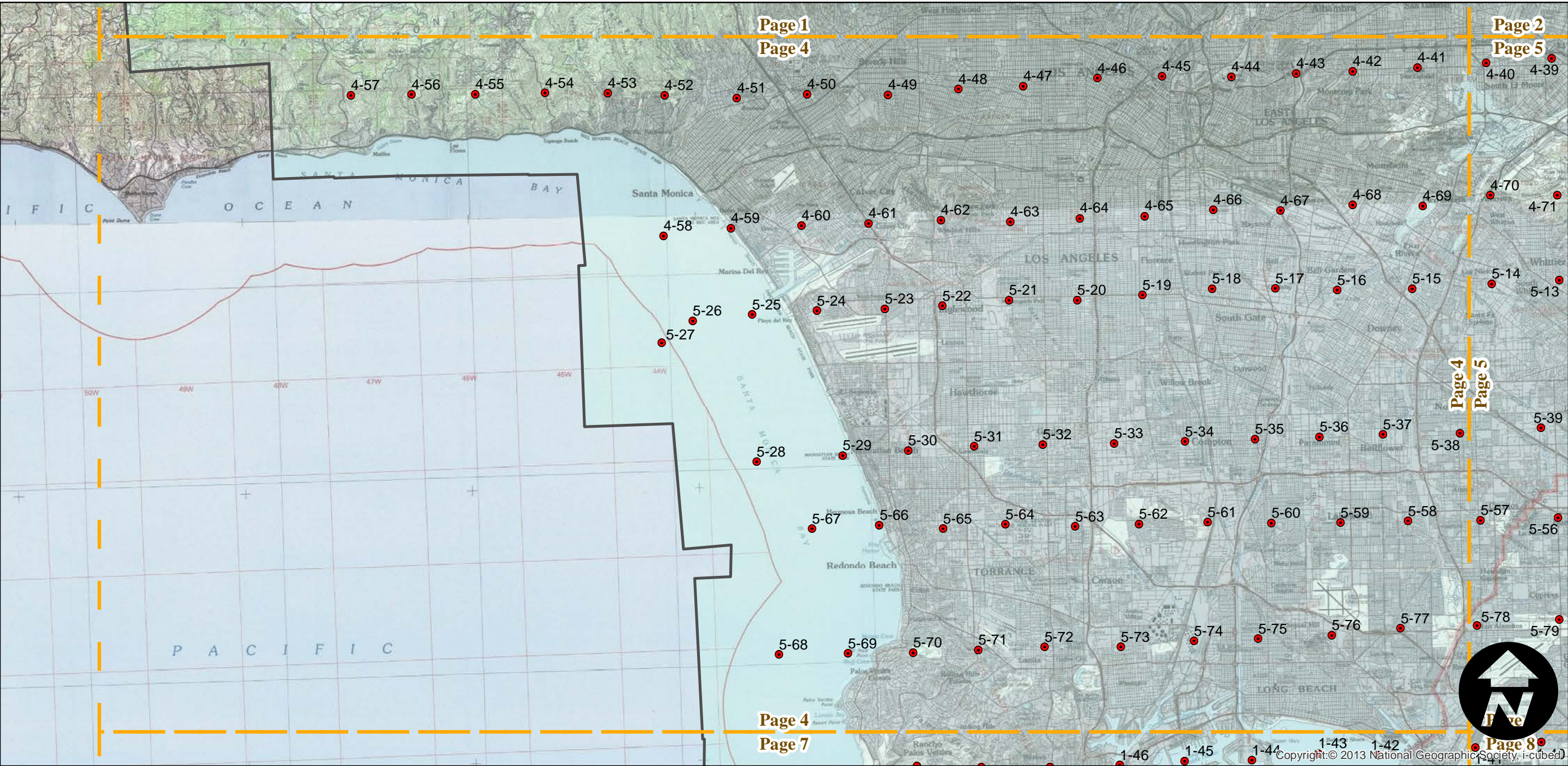
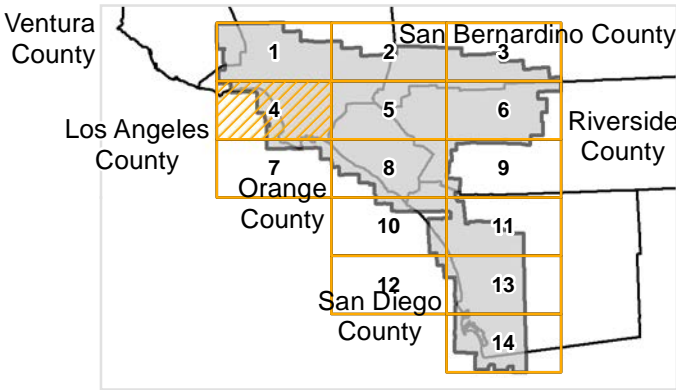
Counties: Los Angeles, Orange, Riverside,
San Bernardino, San Diego, Ventura
Flight date(s): 01-01-1958 to 03-31-1958
Scale: 1:36,000
Overlap: 60%

Complete Metadata:
<http://www.library.ucsb.edu/mil/aerial-photography-tools>

Note: Roll number 5 stored at Annex 2 due to vinegar syndrome. Imagery acquired from Whittier College, January 2013.

- MIL owns frame
- MIL does not own frame

FLIGHT LOCATION



0 3 6 12 Miles

Index to Aerial Photography
Page 4 of 14

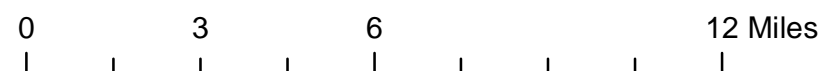
Scale of this index: 1:210,000

Counties: Los Angeles, Orange, Riverside,
San Bernardino, San Diego, Ventura
Flight date(s): 01-01-1958 to 03-31-1958
Scale: 1:36,000
Overlap: 60%

Note: Roll number 5 stored at Annex 2 due to vinegar syndrome. Imagery acquired from Whittier College, January 2013.

- MIL owns frame
- MIL does not own frame

A map of Southern California divided into 14 numbered regions. The regions are arranged in a grid-like pattern. Region 5 is highlighted with diagonal hatching. The surrounding counties are labeled: Ventura County to the northwest, San Bernardino County to the northeast, Los Angeles County to the west, Orange County to the southwest, San Diego County to the south, and Riverside County to the east.



Index to Aerial Photography
Page 5 of 14

Scale of this index: 1:210,000

C-23023

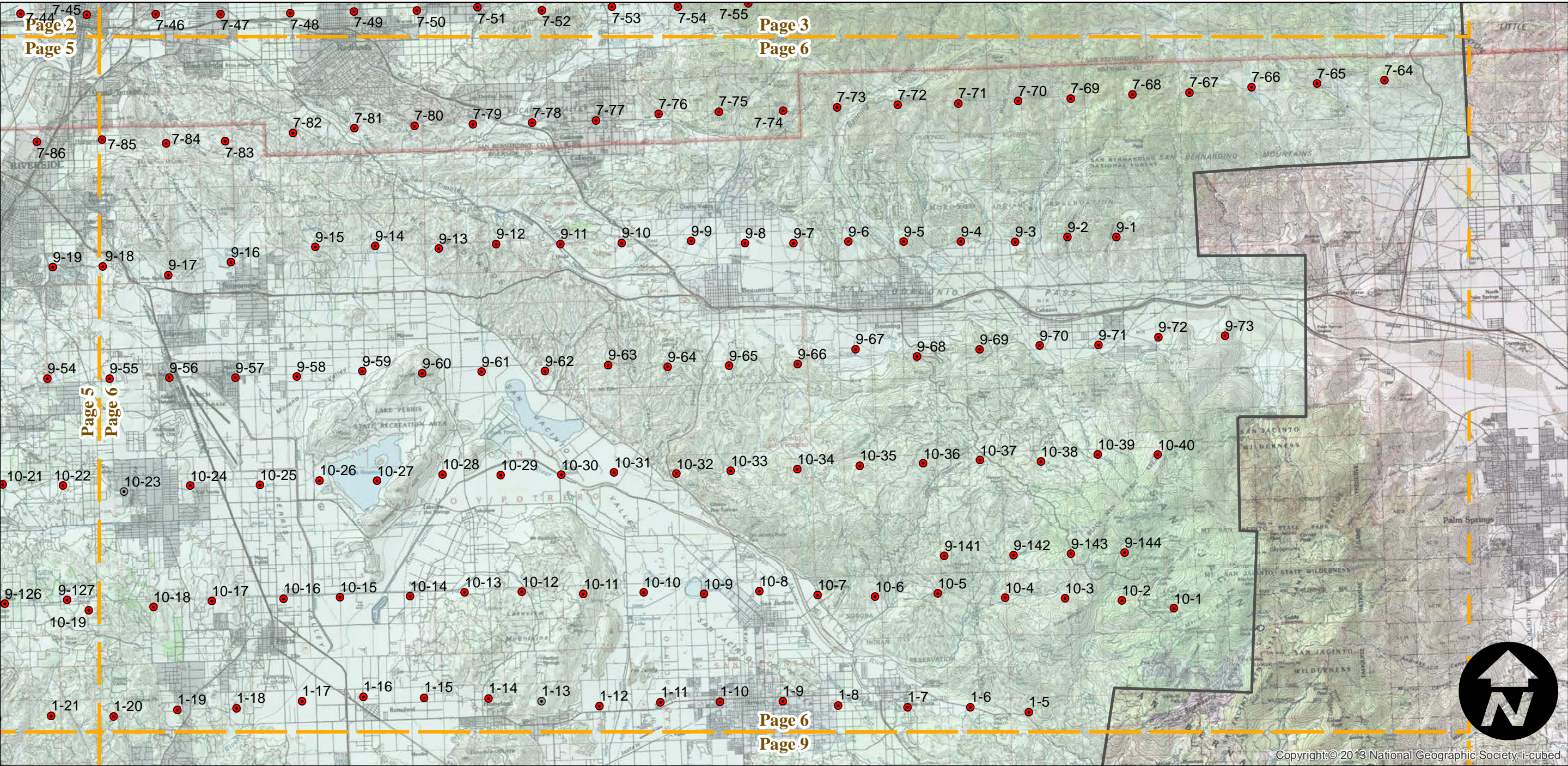
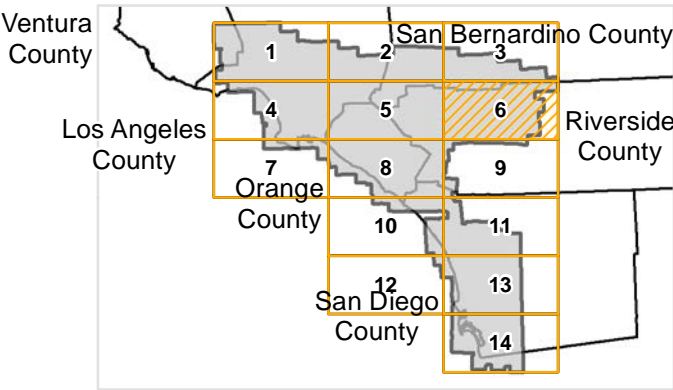
Counties: Los Angeles, Orange, Riverside,
San Bernardino, San Diego, Ventura
Flight date(s): 01-01-1958 to 03-31-1958
Scale: 1:36,000
Overlap: 60%

Note: Roll number 5 stored at Annex 2 due to vinegar
syndrome. Imagery acquired from Whittier College,
January 2013.

Complete Metadata:
<http://www.library.ucsb.edu/mil/aerial-photography-tools>

- MIL owns frame
- MIL does not own frame

FLIGHT LOCATION



0 3 6 12 Miles

Index to Aerial Photography
Page 6 of 14

Scale of this index: 1:210,000

C-23023

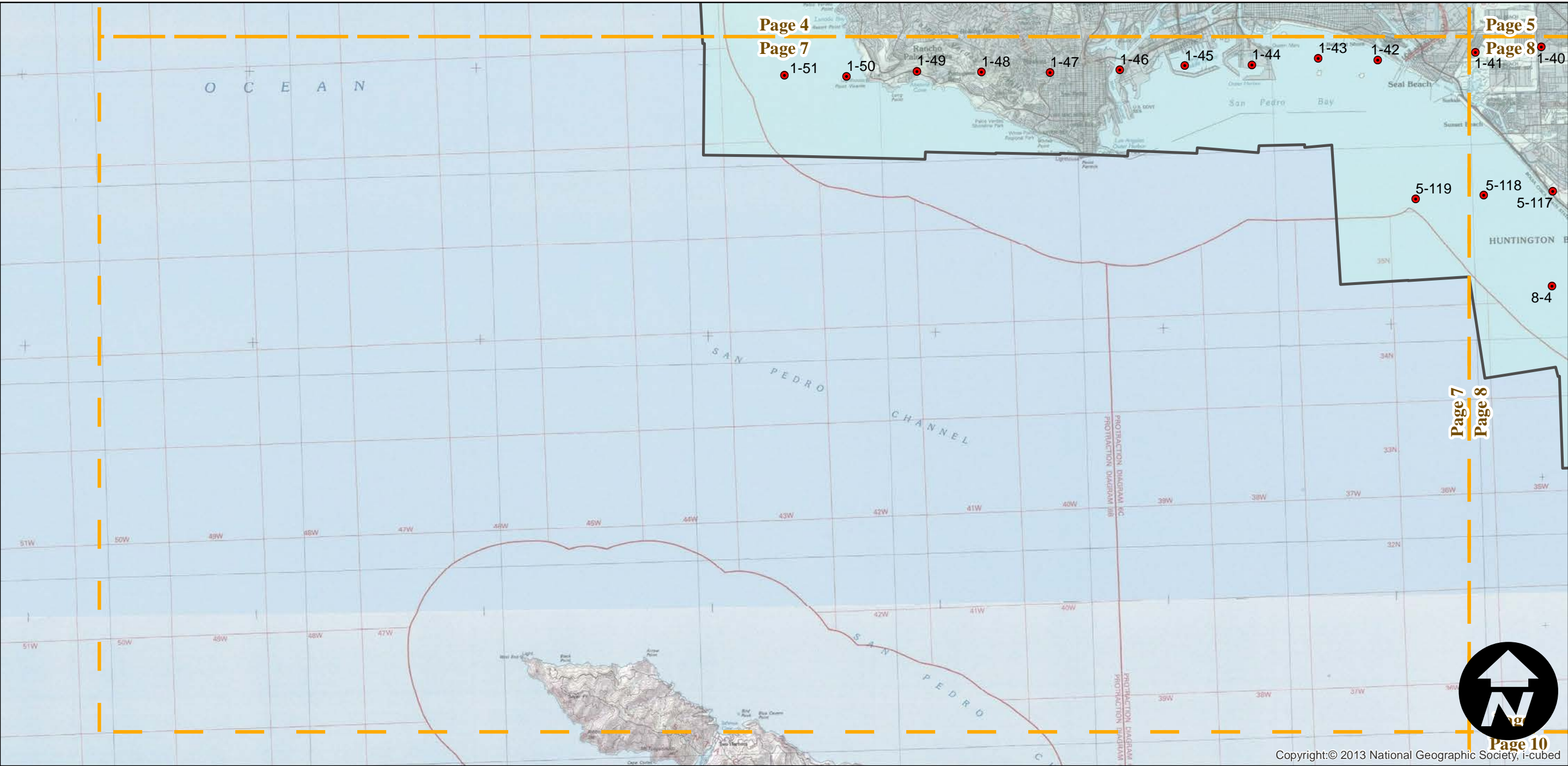
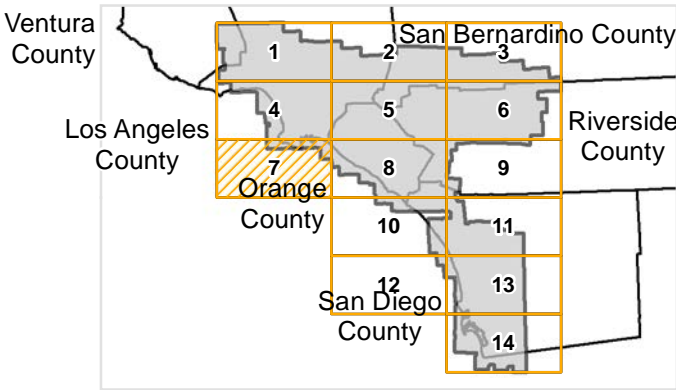
Counties: Los Angeles, Orange, Riverside,
San Bernardino, San Diego, Ventura
Flight date(s): 01-01-1958 to 03-31-1958
Scale: 1:36,000
Overlap: 60%

Complete Metadata:
<http://www.library.ucsb.edu/mil/aerial-photography-tools>

Note: Roll number 5 stored at Annex 2 due to vinegar syndrome. Imagery acquired from Whittier College, January 2013.

- MIL owns frame
- MIL does not own frame

FLIGHT LOCATION



C-23023

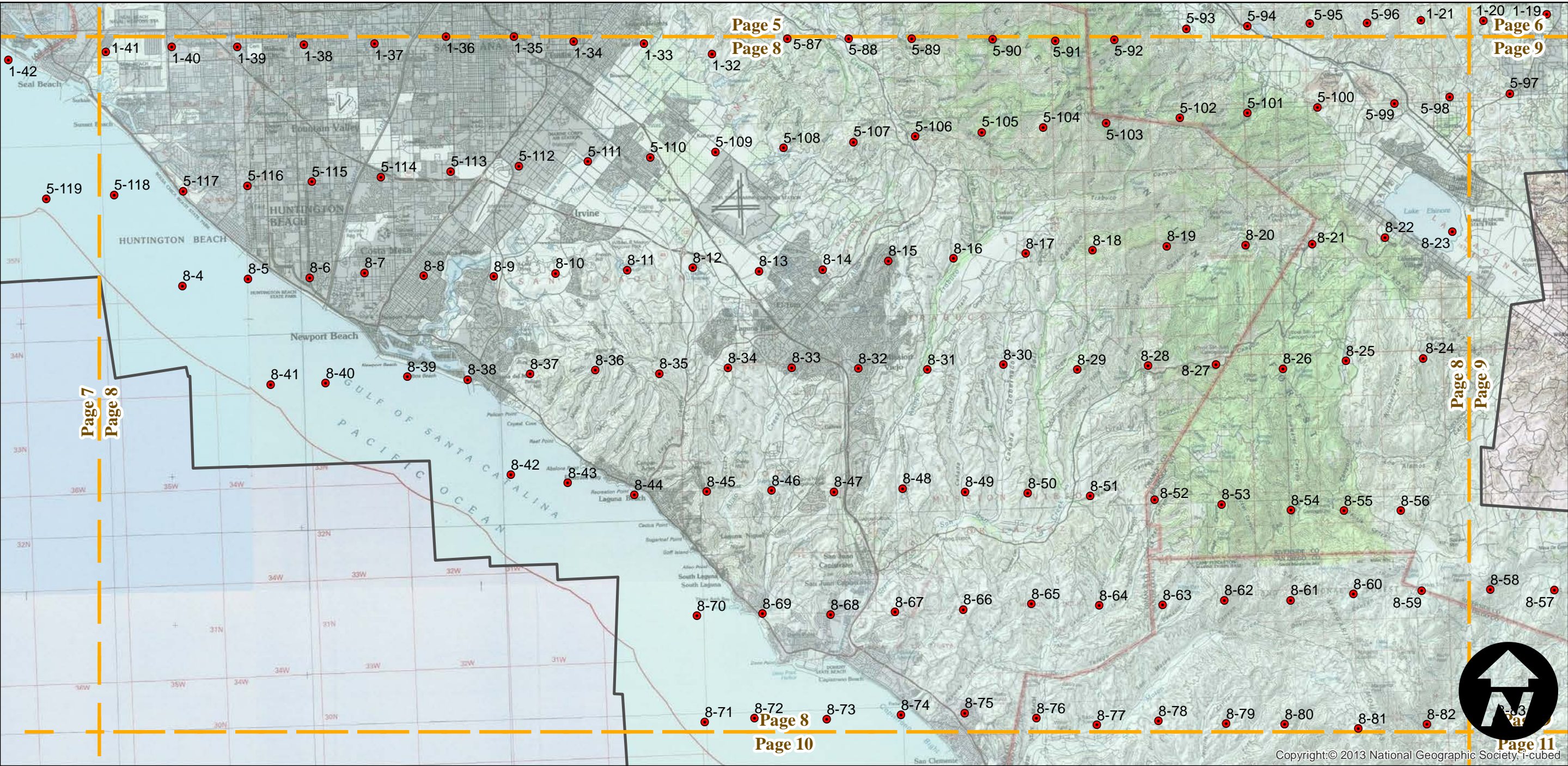
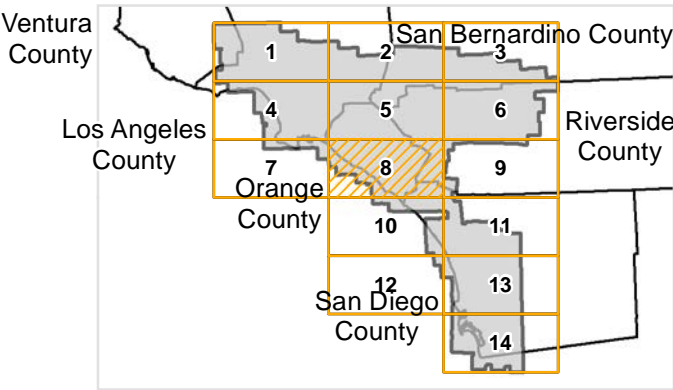
Counties: Los Angeles, Orange, Riverside,
San Bernardino, San Diego, Ventura
Flight date(s): 01-01-1958 to 03-31-1958
Scale: 1:36,000
Overlap: 60%

Complete Metadata:
<http://www.library.ucsb.edu/mil/aerial-photography-tools>

Note: Roll number 5 stored at Annex 2 due to vinegar syndrome. Imagery acquired from Whittier College, January 2013.

- MIL owns frame
- MIL does not own frame

FLIGHT LOCATION



0 3 6 12 Miles

Index to Aerial Photography
Page 8 of 14

Scale of this index: 1:210,000

C-23023

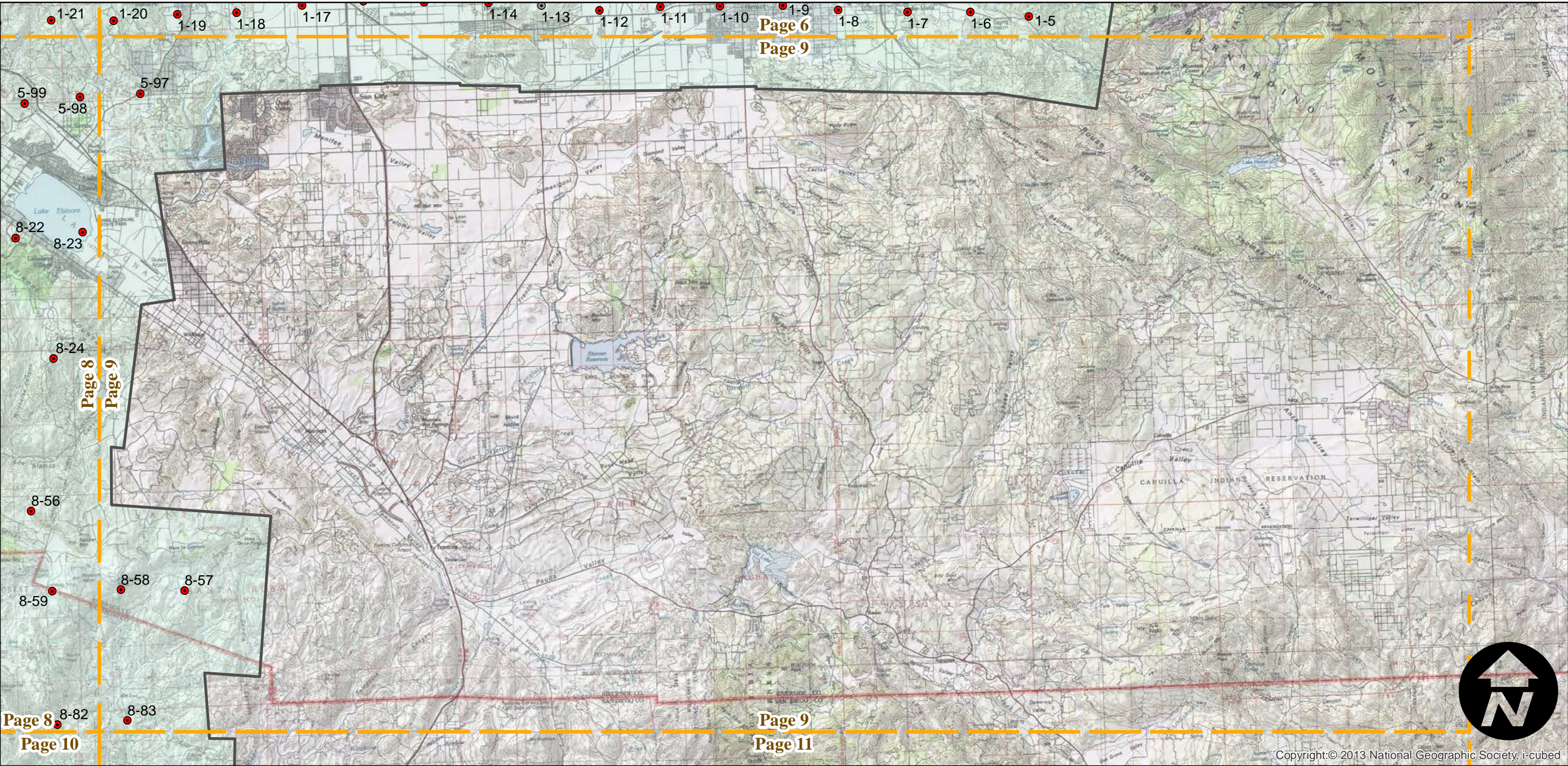
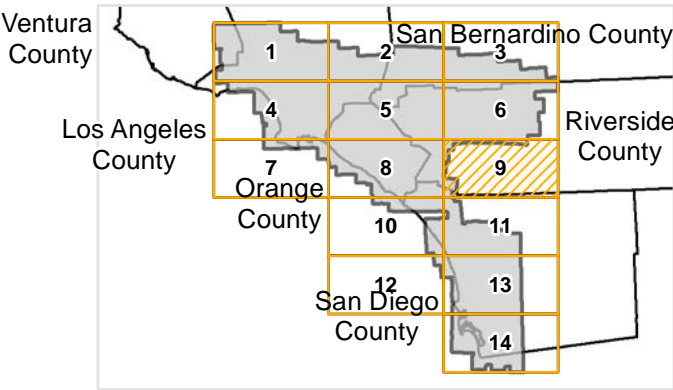
Counties: Los Angeles, Orange, Riverside,
San Bernardino, San Diego, Ventura
Flight date(s): 01-01-1958 to 03-31-1958
Scale: 1:36,000
Overlap: 60%

Complete Metadata:
<http://www.library.ucsb.edu/mil/aerial-photography-tools>

Note: Roll number 5 stored at Annex 2 due to vinegar syndrome. Imagery acquired from Whittier College, January 2013.

- MIL owns frame
- MIL does not own frame

FLIGHT LOCATION



C-23023

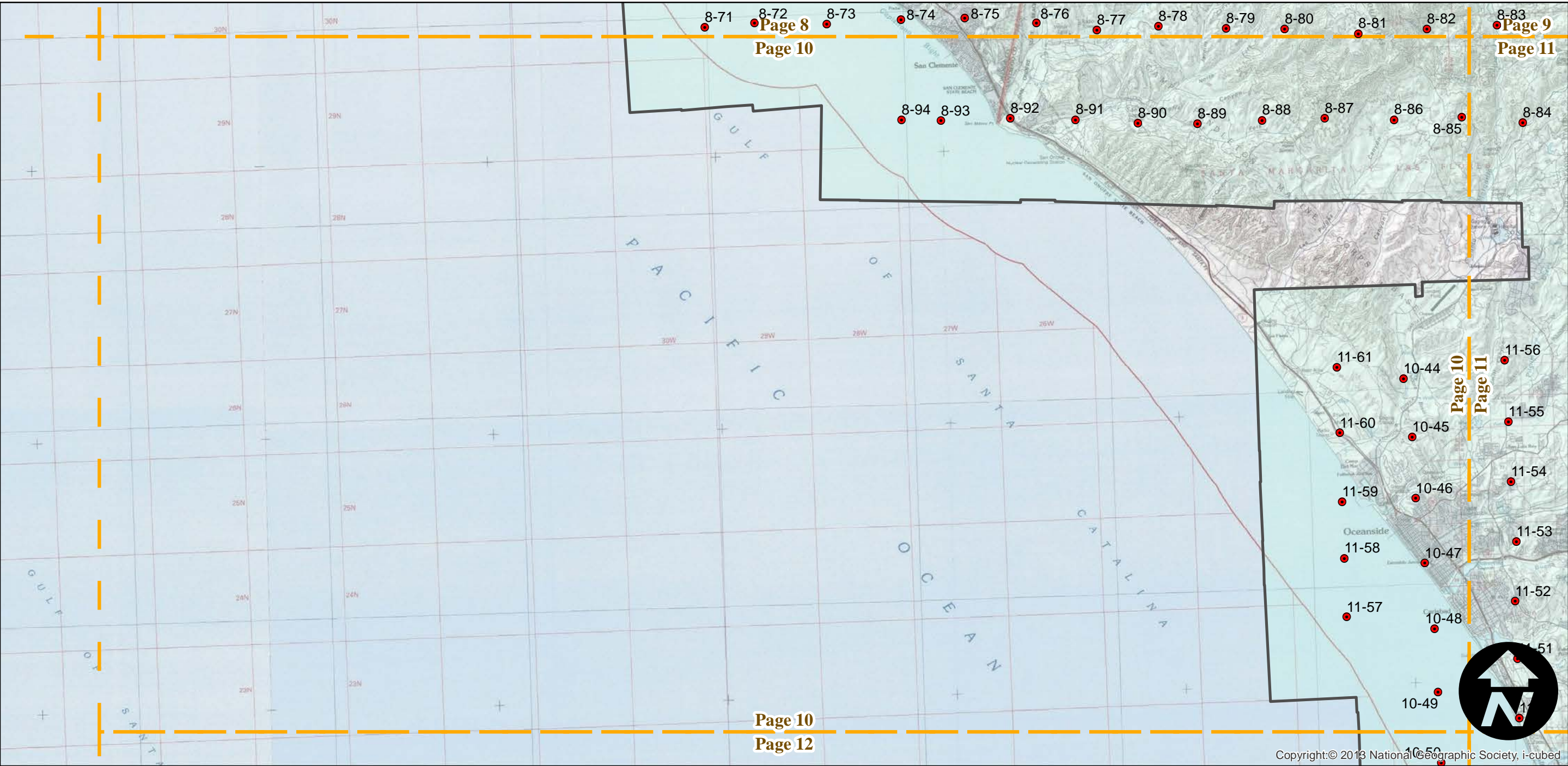
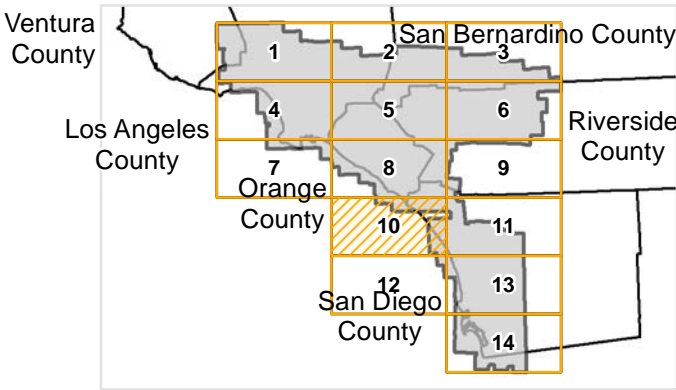
Counties: Los Angeles, Orange, Riverside,
San Bernardino, San Diego, Ventura
Flight date(s): 01-01-1958 to 03-31-1958
Scale: 1:36,000
Overlap: 60%

Complete Metadata:
<http://www.library.ucsb.edu/mil/aerial-photography-tools>

Note: Roll number 5 stored at Annex 2 due to vinegar syndrome. Imagery acquired from Whittier College, January 2013.

- MIL owns frame
- MIL does not own frame

FLIGHT LOCATION



0 3 6 12 Miles

Index to Aerial Photography
Page 10 of 14

Scale of this index: 1:210,000

C-23023

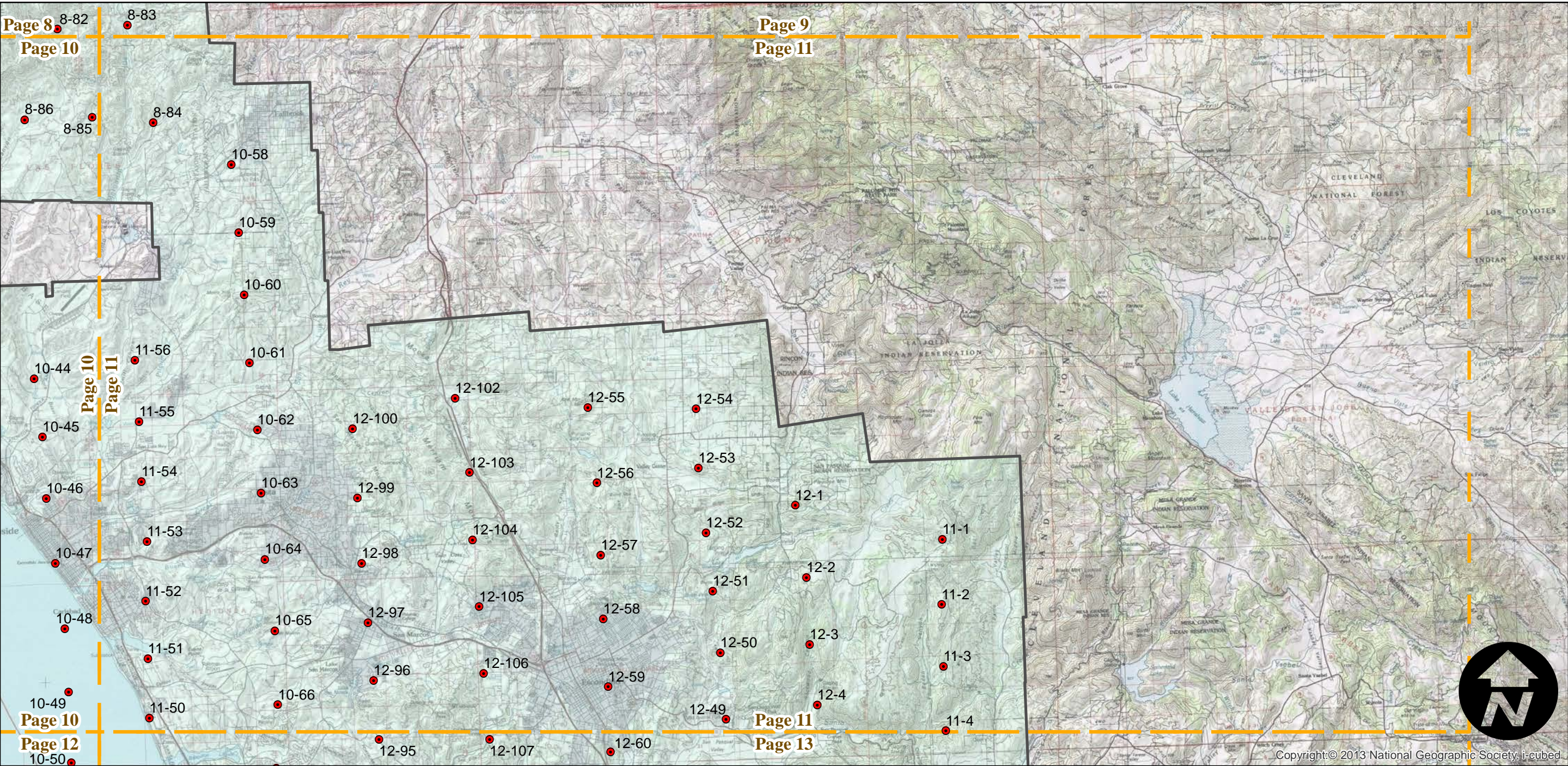
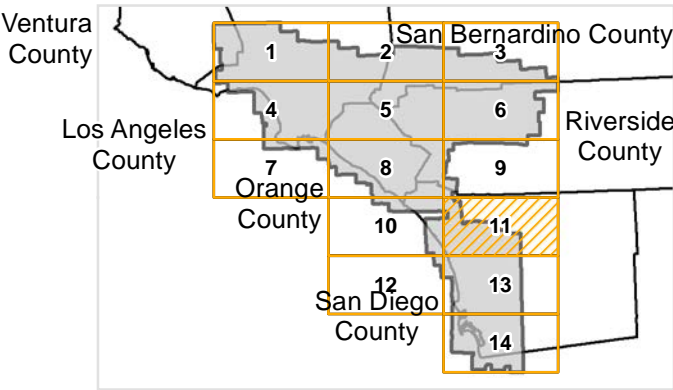
Counties: Los Angeles, Orange, Riverside,
San Bernardino, San Diego, Ventura
Flight date(s): 01-01-1958 to 03-31-1958
Scale: 1:36,000
Overlap: 60%

Complete Metadata:
<http://www.library.ucsb.edu/mil/aerial-photography-tools>

Note: Roll number 5 stored at Annex 2 due to vinegar syndrome. Imagery acquired from Whittier College, January 2013.

- MIL owns frame
- MIL does not own frame

FLIGHT LOCATION



0 3 6 12 Miles

Index to Aerial Photography
Page 11 of 14

Scale of this index: 1:210,000

C-23023

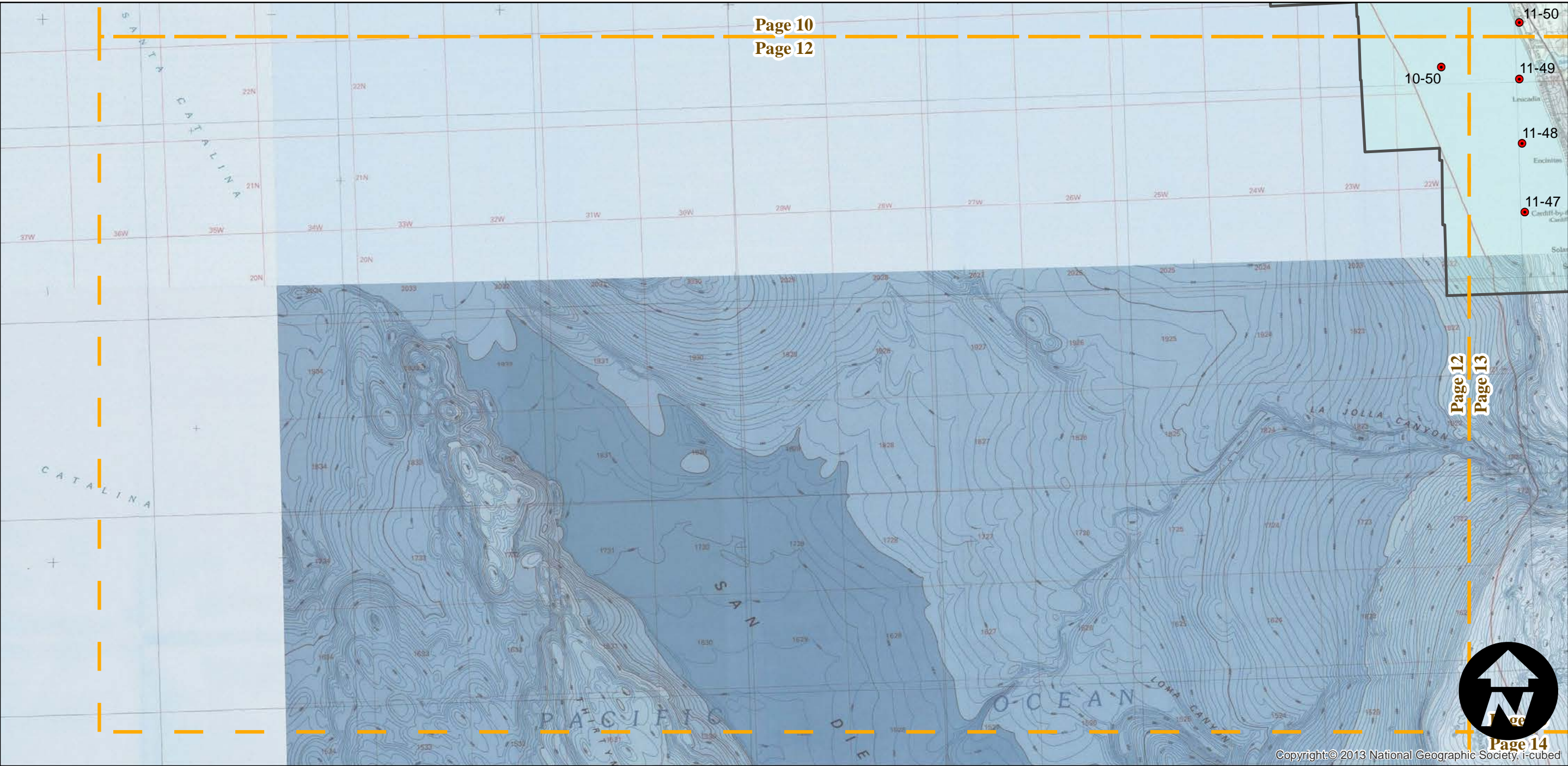
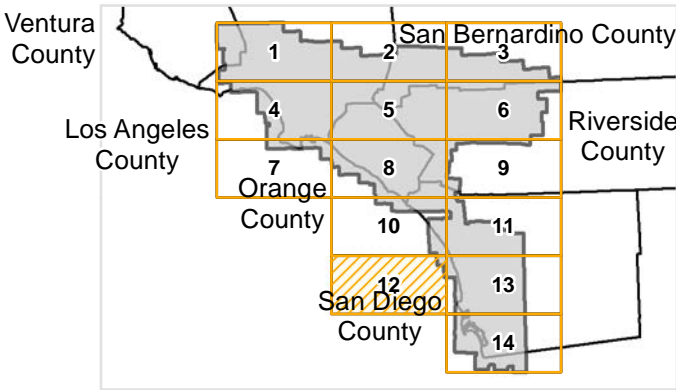
Counties: Los Angeles, Orange, Riverside,
San Bernardino, San Diego, Ventura
Flight date(s): 01-01-1958 to 03-31-1958
Scale: 1:36,000
Overlap: 60%

Complete Metadata:
<http://www.library.ucsb.edu/mil/aerial-photography-tools>

Note: Roll number 5 stored at Annex 2 due to vinegar syndrome. Imagery acquired from Whittier College, January 2013.

- MIL owns frame
- MIL does not own frame

FLIGHT LOCATION



0 3 6 12 Miles

Index to Aerial Photography
Page 12 of 14

Scale of this index: 1:210,000

C-23023

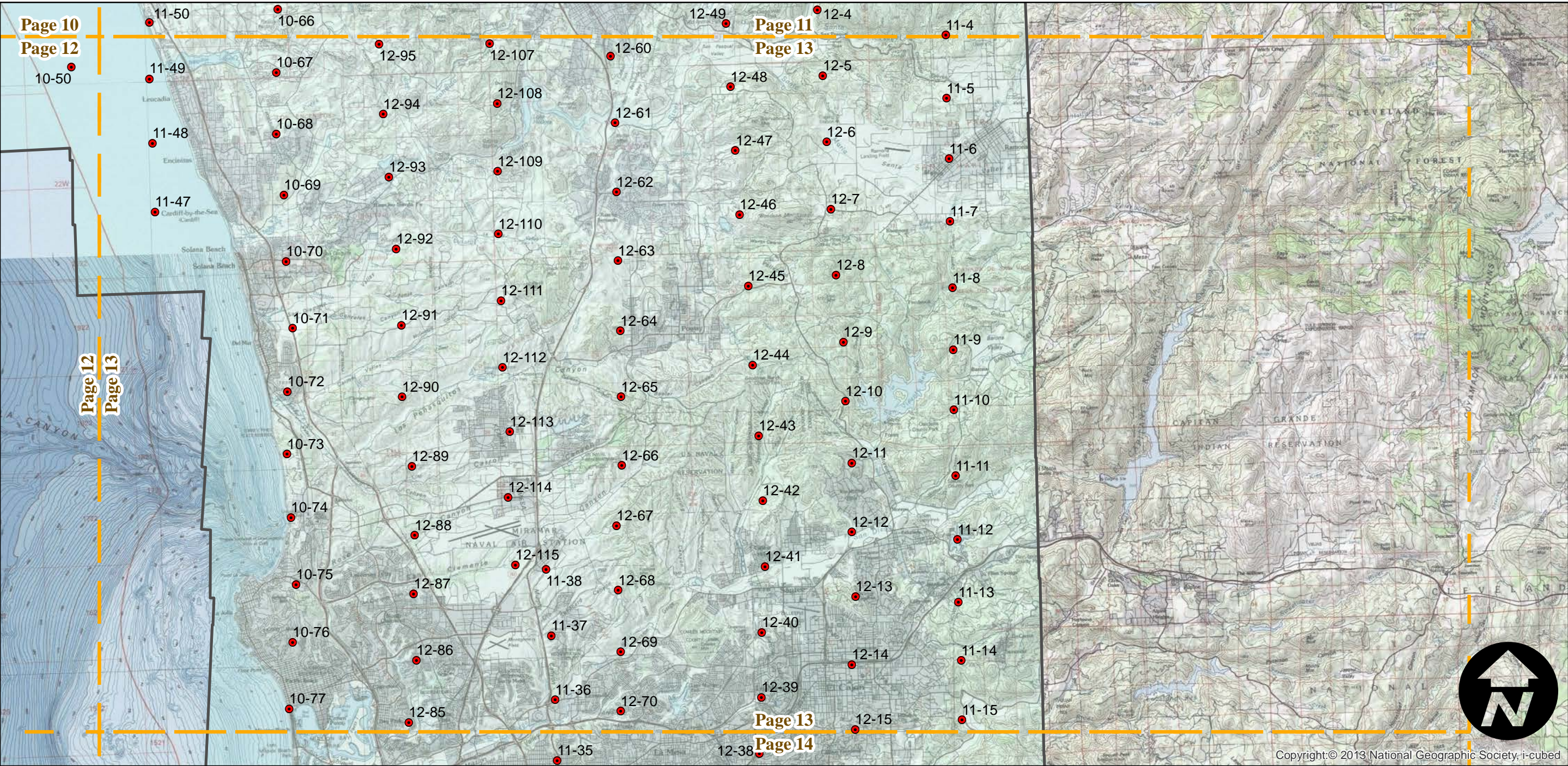
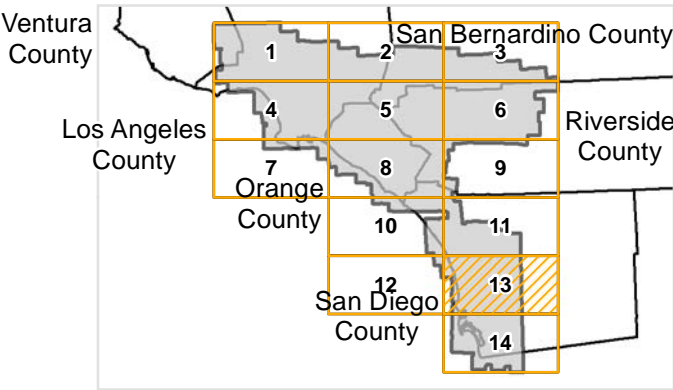
Counties: Los Angeles, Orange, Riverside,
San Bernardino, San Diego, Ventura
Flight date(s): 01-01-1958 to 03-31-1958
Scale: 1:36,000
Overlap: 60%

Complete Metadata:
<http://www.library.ucsb.edu/mil/aerial-photography-tools>

Note: Roll number 5 stored at Annex 2 due to vinegar syndrome. Imagery acquired from Whittier College, January 2013.

- MIL owns frame
- MIL does not own frame

FLIGHT LOCATION



0 3 6 12 Miles

Index to Aerial Photography
Page 13 of 14

Scale of this index: 1:210,000

C-23023

Counties: Los Angeles, Orange, Riverside,
San Bernardino, San Diego, Ventura
Flight date(s): 01-01-1958 to 03-31-1958
Scale: 1:36,000
Overlap: 60%

Note: Roll number 5 stored at Annex 2 due to vinegar
syndrome. Imagery acquired from Whittier College,
January 2013.

Complete Metadata:
<http://www.library.ucsb.edu/mil/aerial-photography-tools>

- MIL owns frame
- MIL does not own frame

FLIGHT LOCATION

