

C-2280 (Not held)

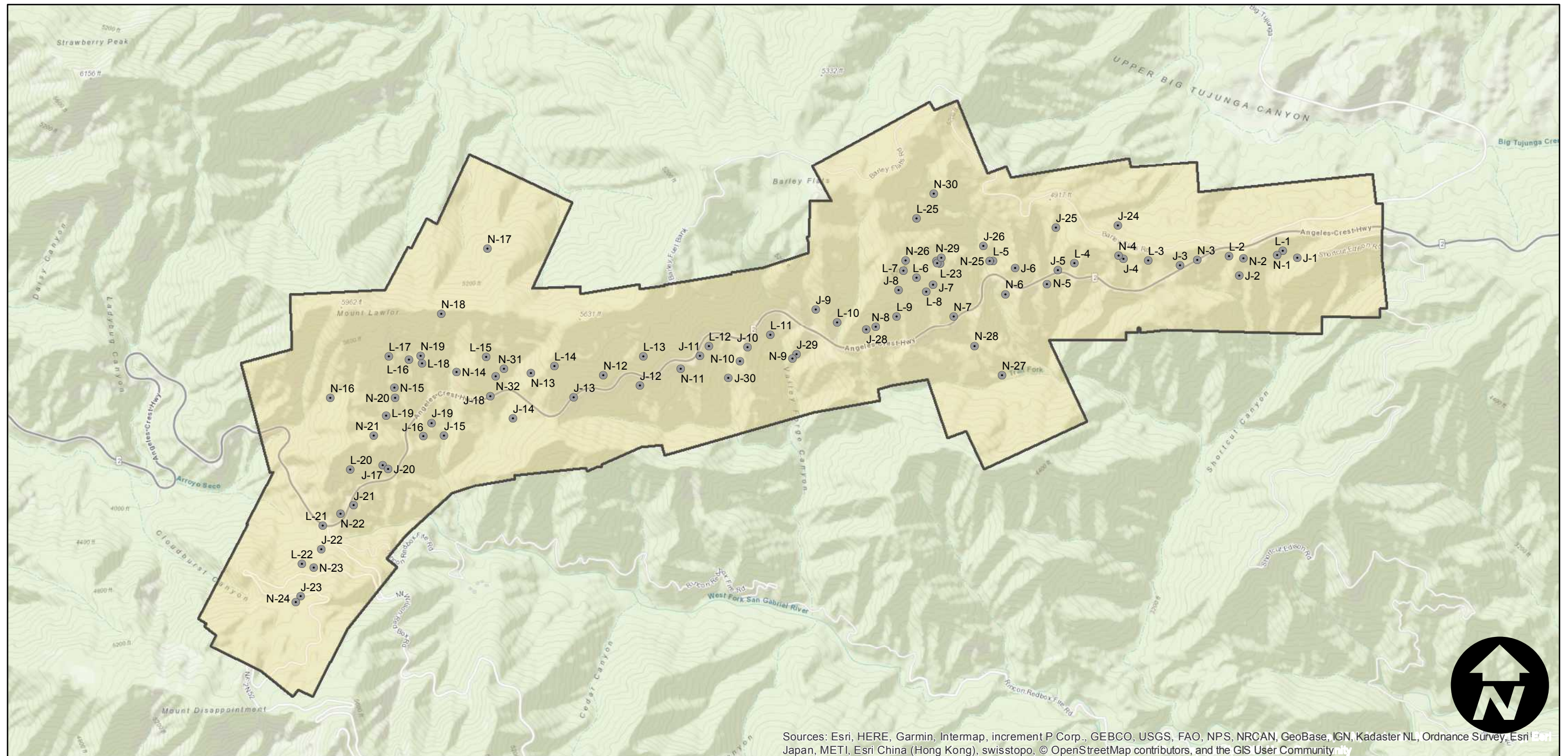
Counties: Los Angeles
Flight date(s): 01-01-1932 to 12-31-1932
Scale: 1:5,000
Overlap: 60%

Complete Metadata:
<https://www.library.ucsb.edu/src/airphotos/aerial-photography-information>

Note: UCSB Library does NOT own any of the frames listed on this PDF and it is not known who owns these frames. Barley Flats (Angeles National Forest): vicinity of SR 2 (Angeles Crest Highway) and Rincon Red Box Road/Truck Trail. Exact flight date is unknown.

- MIL owns frame
- MIL does not own frame

FLIGHT LOCATION



Sources: Esri, HERE, Garmin, Intermap, increment P Corp., GEBCO, USGS, FAO, NPS, NRCAN, GeoBase, IGN, Kadaster NL, Ordnance Survey, Esri Japan, METI, Esri China (Hong Kong), swisstopo, © OpenStreetMap contributors, and the GIS User Community

