

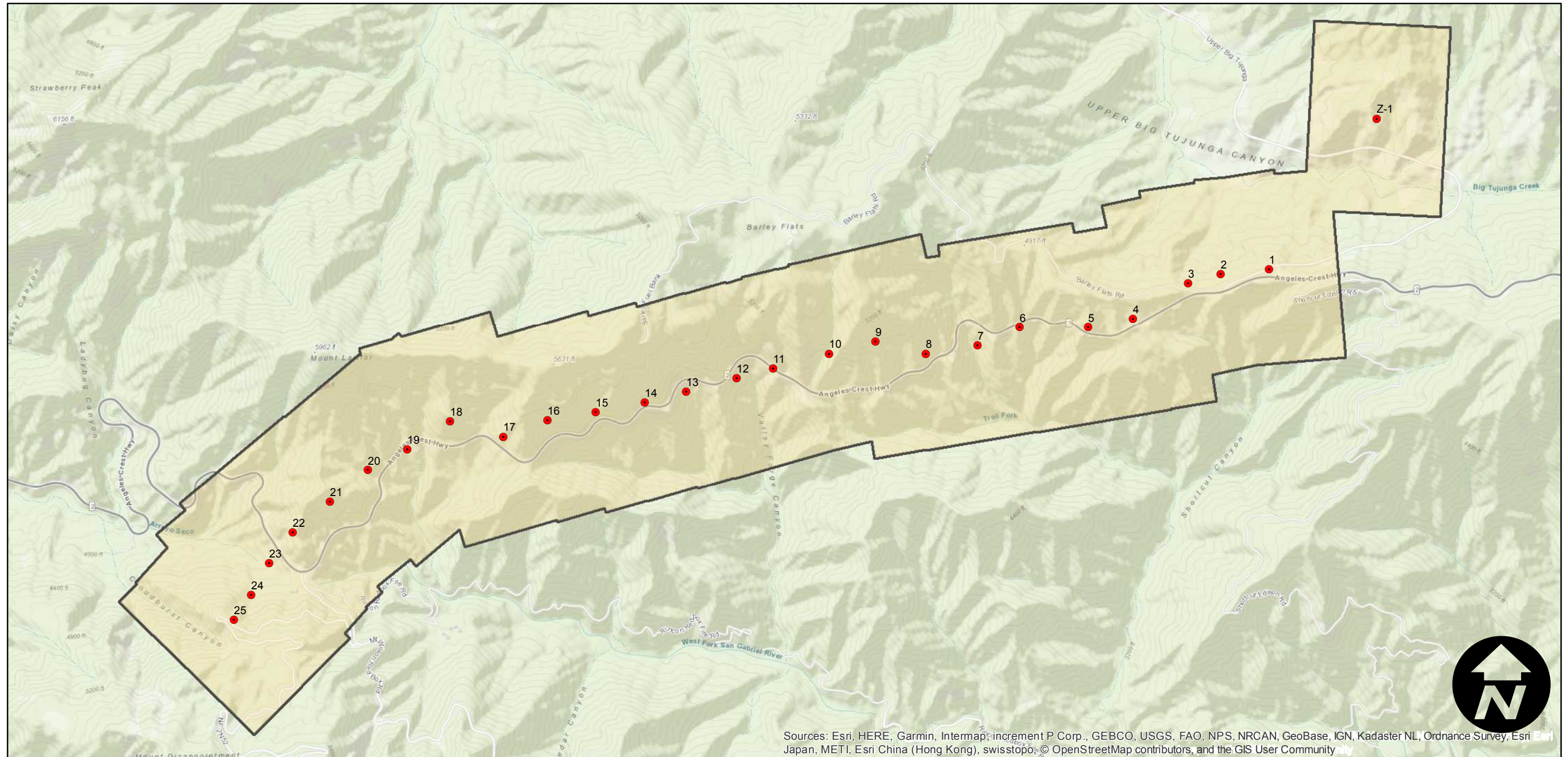
C-2280

Counties: Los Angeles
Flight date(s): 01-01-1932 to 12-31-1932
Scale: 1:5,000
Overlap: 60%

Complete Metadata:
<https://www.library.ucsb.edu/src/airphotos/aerial-photography-information>

Note: Barley Flats (Angeles National Forest): vicinity of SR 2 (Angeles Crest Highway) and Rincon Red Box Road/Truck Trail. Exact flight date is unknown. Acquired from Whittier College, January 2013. Nitrate negatives scanned, April 2015.

FLIGHT LOCATION



Sources: Esri, HERE, Garmin, Intermap, increment P Corp., GEBCO, USGS, FAO, NPS, NRCAN, GeoBase, IGN, Kadaster NL, Ordnance Survey, Esri Japan, METI, Esri China (Hong Kong), swisstopo, © OpenStreetMap contributors, and the GIS User Community

0 0.5 1 2 Miles

Index to Aerial Photography
Page 1 of 1

Scale of this index: 1:25,000