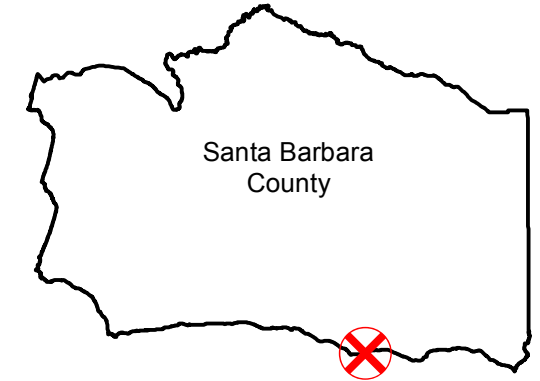


C-210

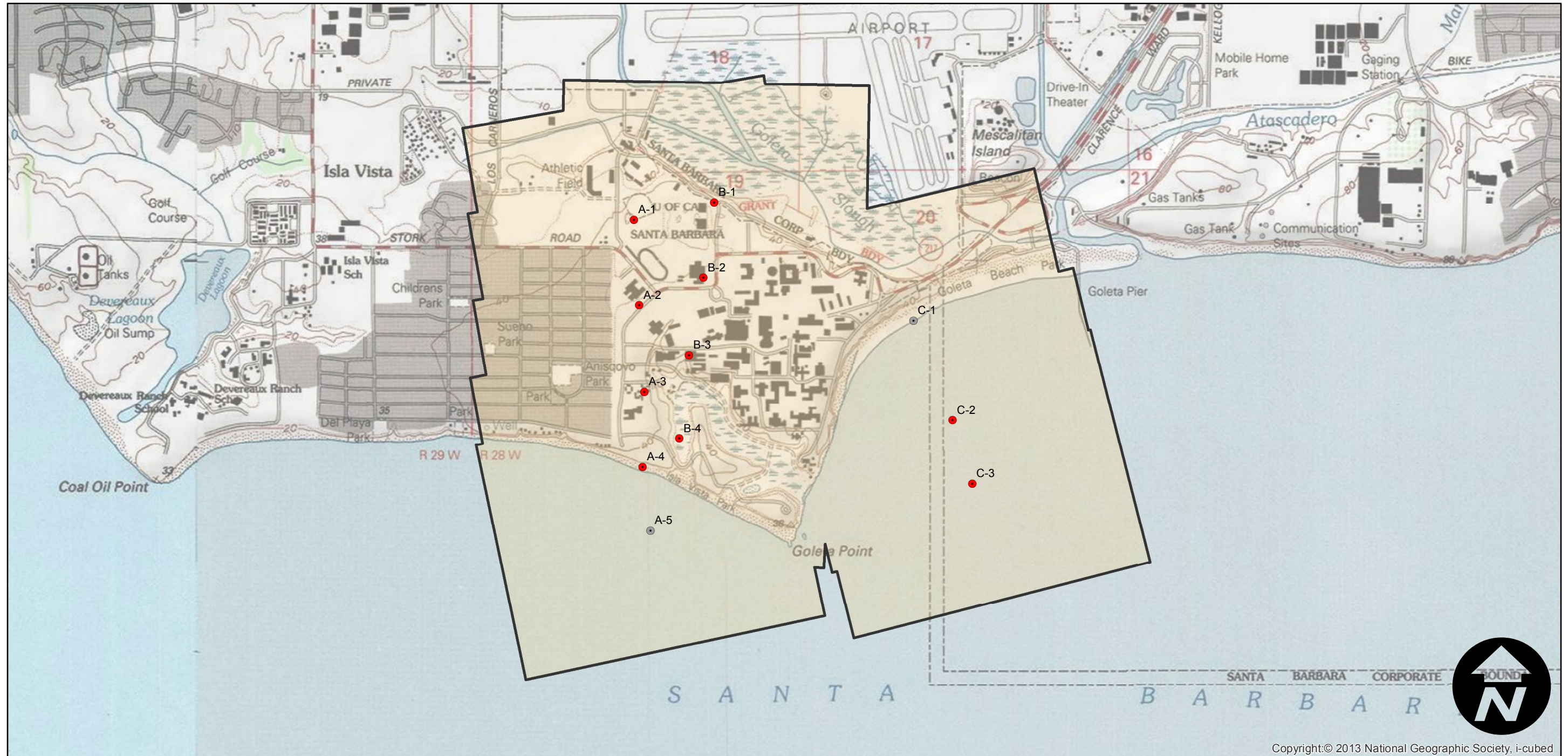
Counties: Santa Barbara
Flight date(s): 04-15-1928
Scale: 1: 6,000
Overlap: 60%

Note: Den Ranch (site of UCSB campus). Prints acquired from Teledyne, Inc. (1986) made from copy negatives that were made from original nitrate film. Prints and copy negatives acquired from Whittier College, January 2013.

FLIGHT LOCATION



Complete Metadata:
<http://www.library.ucsb.edu/mil/aerial-photography-tools>



0 0.25 0.5 1 Miles

Index to Aerial Photography
Page 1 of 1

Scale of this index: 1:20,000



Copyright:© 2013 National Geographic Society, i-cubed