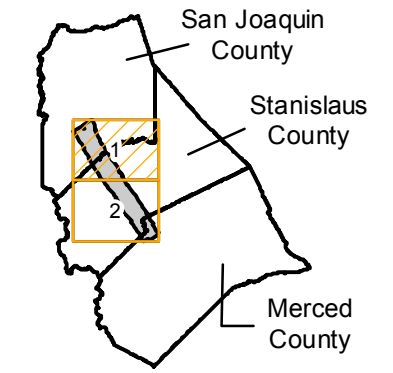


C-2030

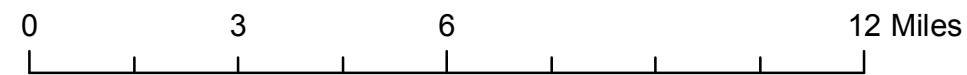
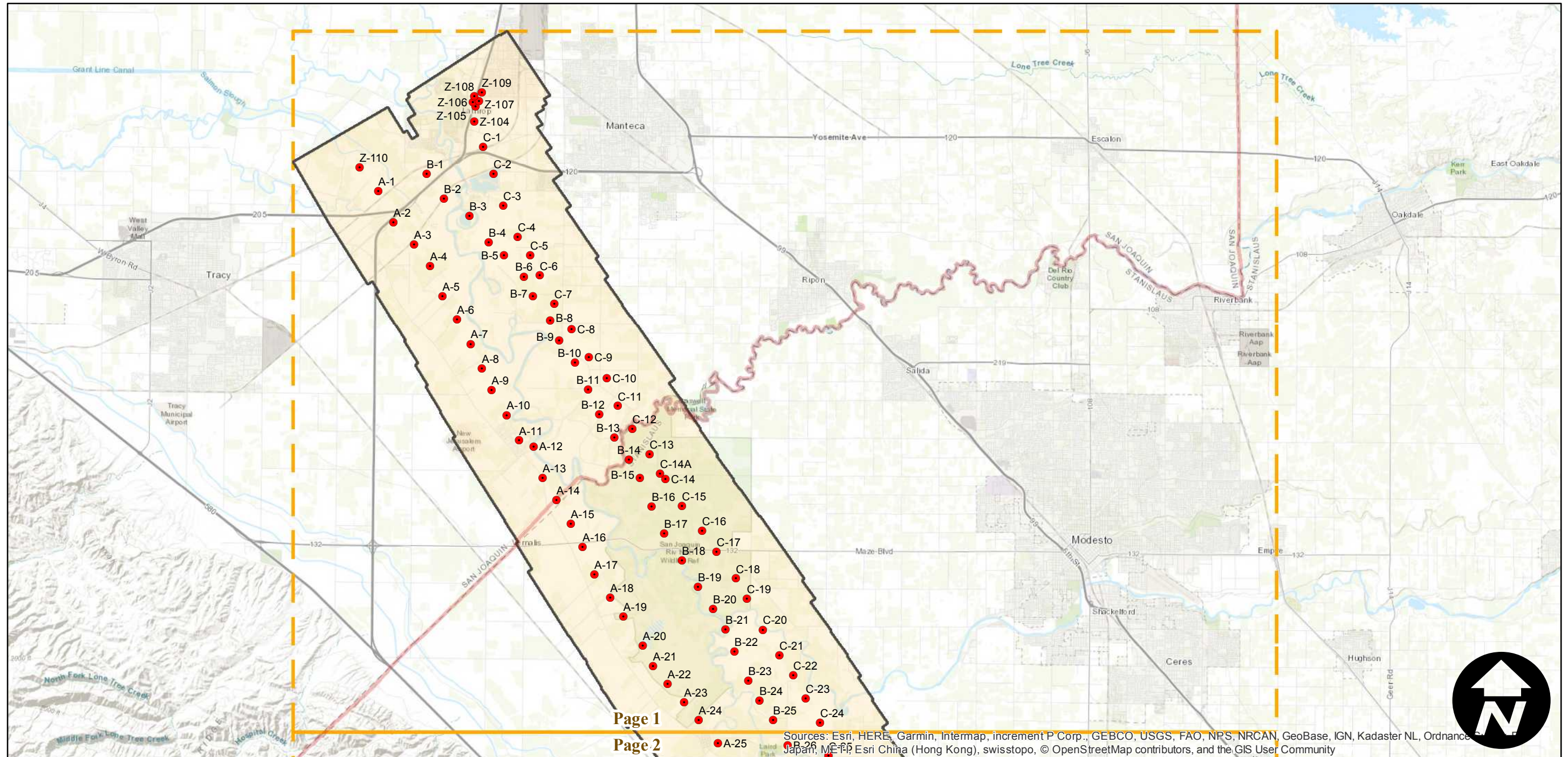
Counties: Merced, San Joaquin, Stanislaus
Flight date(s): 05-08-1932
Scale: 1:18,000
Overlap: 60-95%

Note: San Joaquin River from Lathrop to Hills Ferry.
Acquired from Whittier College, January 2013. Nitrate
negatives scanned, April 2015.

FLIGHT LOCATION



Complete Metadata:
<https://www.library.ucsb.edu/src/airphotos/aerial-photography-information>



Sources: Esri, HERE, Garmin, Intermap, increment P Corp., GEBCO, USGS, FAO, NPS, NRCAN, GeoBase, IGN, Kadaster NL, Ordnance Survey, Esri Japan, METI, Esri China (Hong Kong), swisstopo, © OpenStreetMap contributors, and the GIS User Community

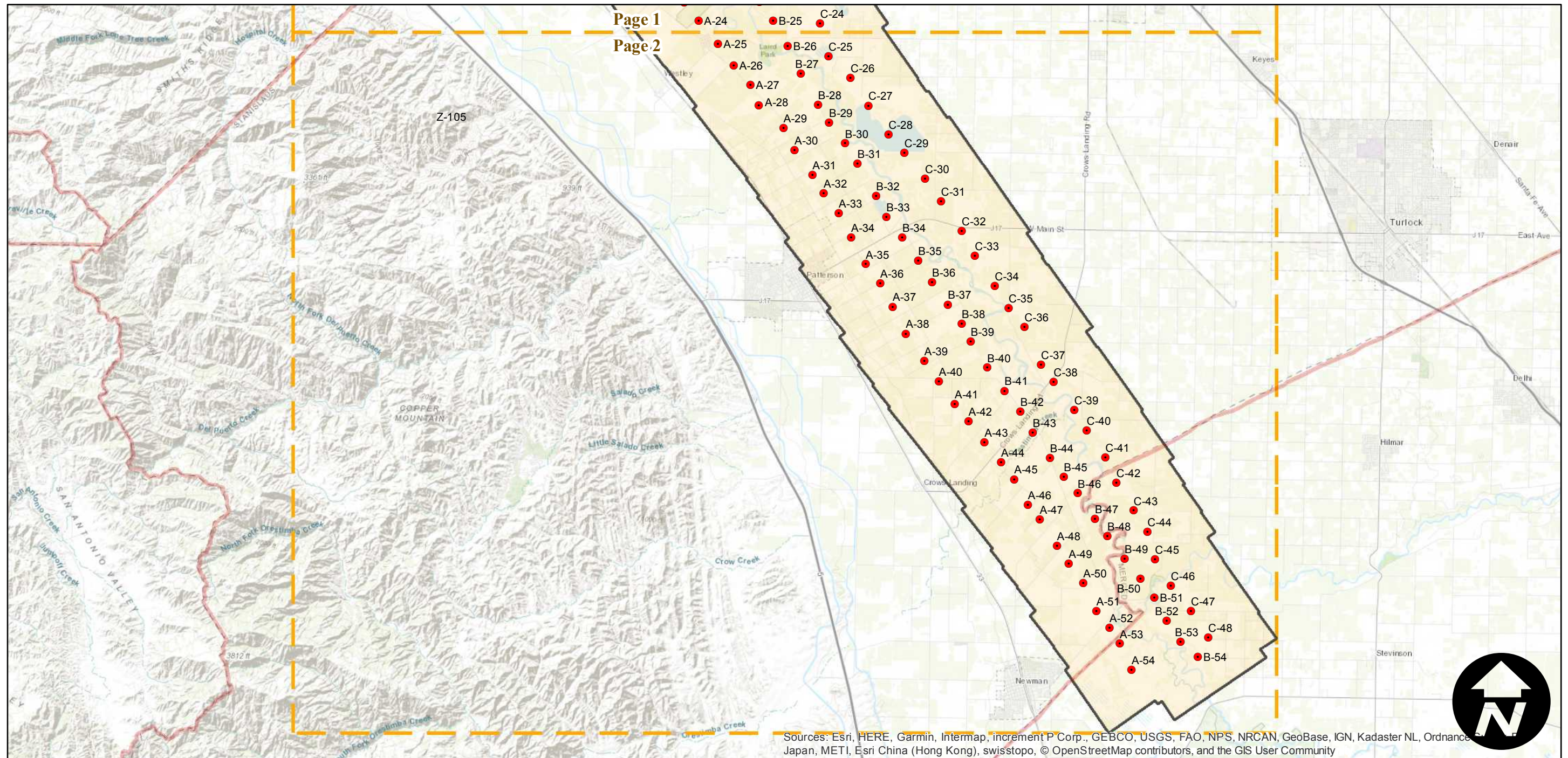
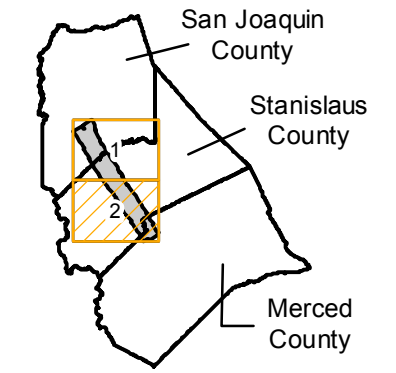
C-2030

Counties: Merced, San Joaquin, Stanislaus
Flight date(s): 05-08-1932
Scale: 1:18,000
Overlap: 60-95%

Note: San Joaquin River from Lathrop to Hills Ferry.
Acquired from Whittier College, January 2013. Nitrate
negatives scanned, April 2015.

Complete Metadata:
<https://www.library.ucsb.edu/src/airphotos/aerial-photography-information>

FLIGHT LOCATION



0 3 6 12 Miles

Index to Aerial Photography
Page 2 of 2

Scale of this index: 1:175,000