

# C-2010

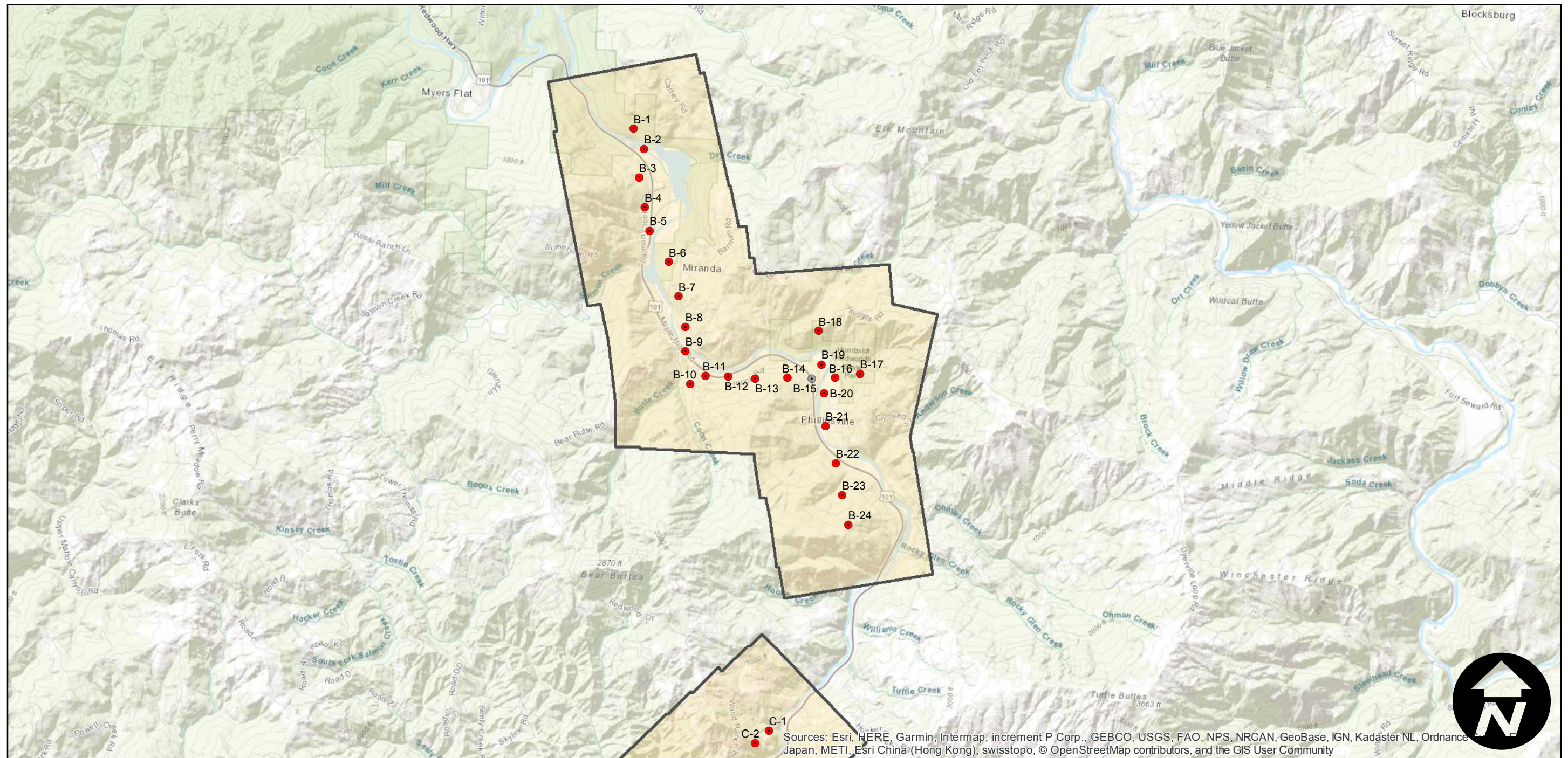
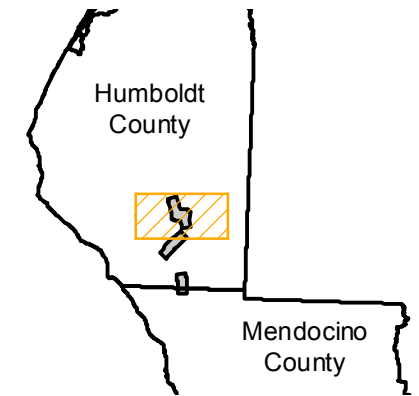
Counties: Humboldt  
Flight date(s): 03-21-1932  
Scale: 1:12,000  
Overlap: 60-80%

Complete Metadata:  
<https://www.library.ucsb.edu/src/airphotos/aerial-photography-information>

Note: South Fork Eel River: vicinity of Miranda, Redway, and Cooks Valley. Some copy negatives acquired 1986, made from original nitrate film. Prints acquired from Whittier College, January 2013.

- MIL owns frame
- MIL does not own frame

## FLIGHT LOCATION



0 1 2 4 Miles

Scale of this index: 1:80,000

# C-2010

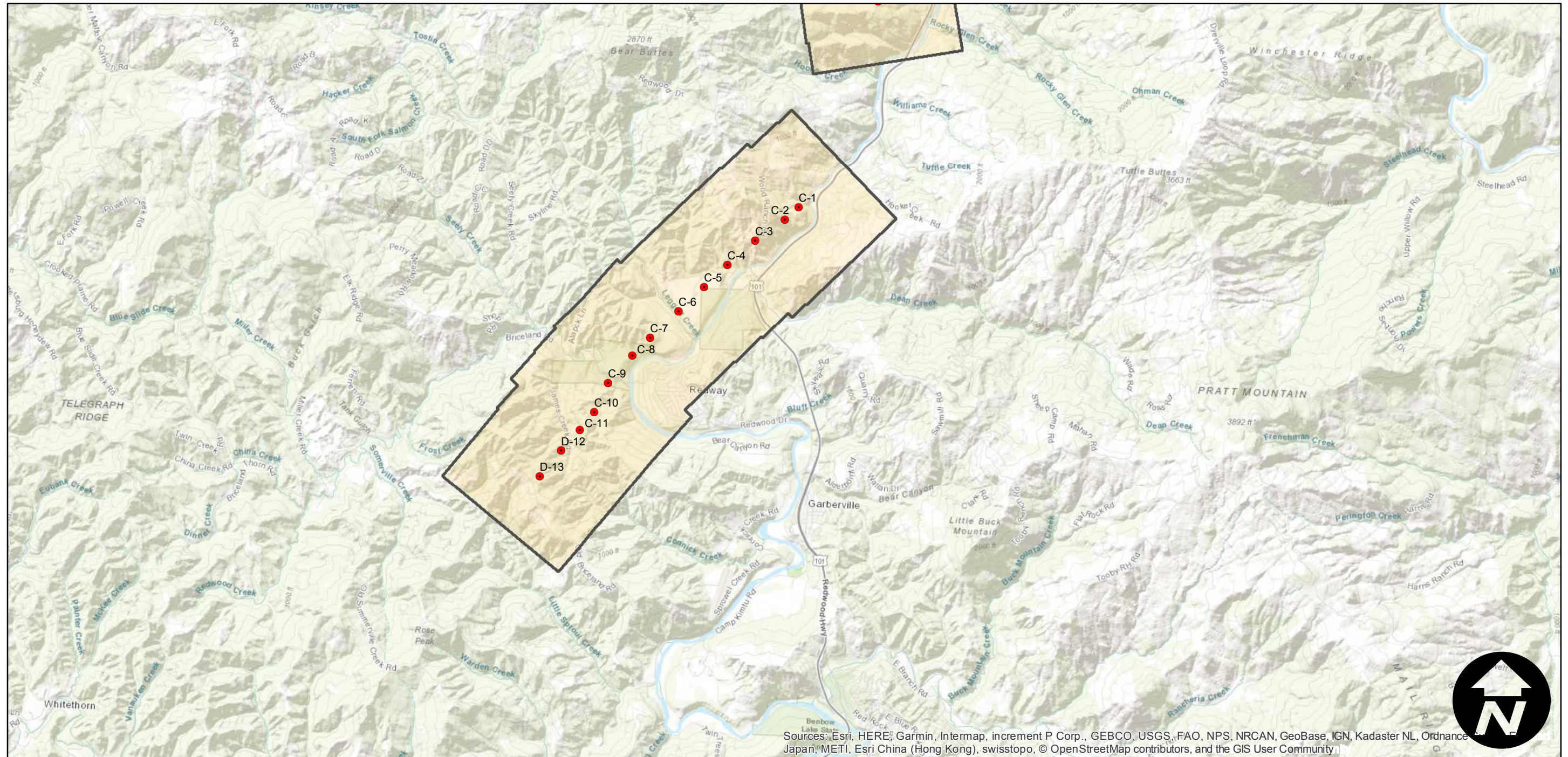
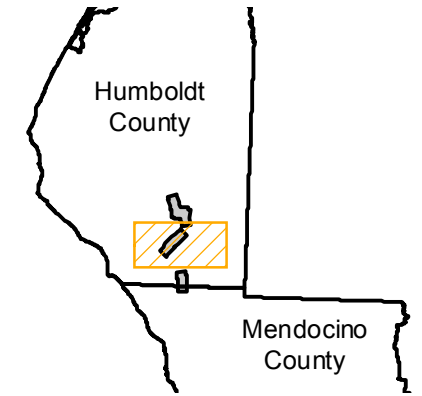
Counties: Humboldt  
Flight date(s): 03-21-1932  
Scale: 1:12,000  
Overlap: 60-80%

Complete Metadata:  
<https://www.library.ucsb.edu/src/airphotos/aerial-photography-information>

Note: South Fork Eel River: vicinity of Miranda, Redway, and Cooks Valley. Some copy negatives acquired 1986, made from original nitrate film. Prints acquired from Whittier College, January 2013.

- MIL owns frame
- MIL does not own frame

## FLIGHT LOCATION



0 1 2 4 Miles

Scale of this index: 1:80,000

# C-2010

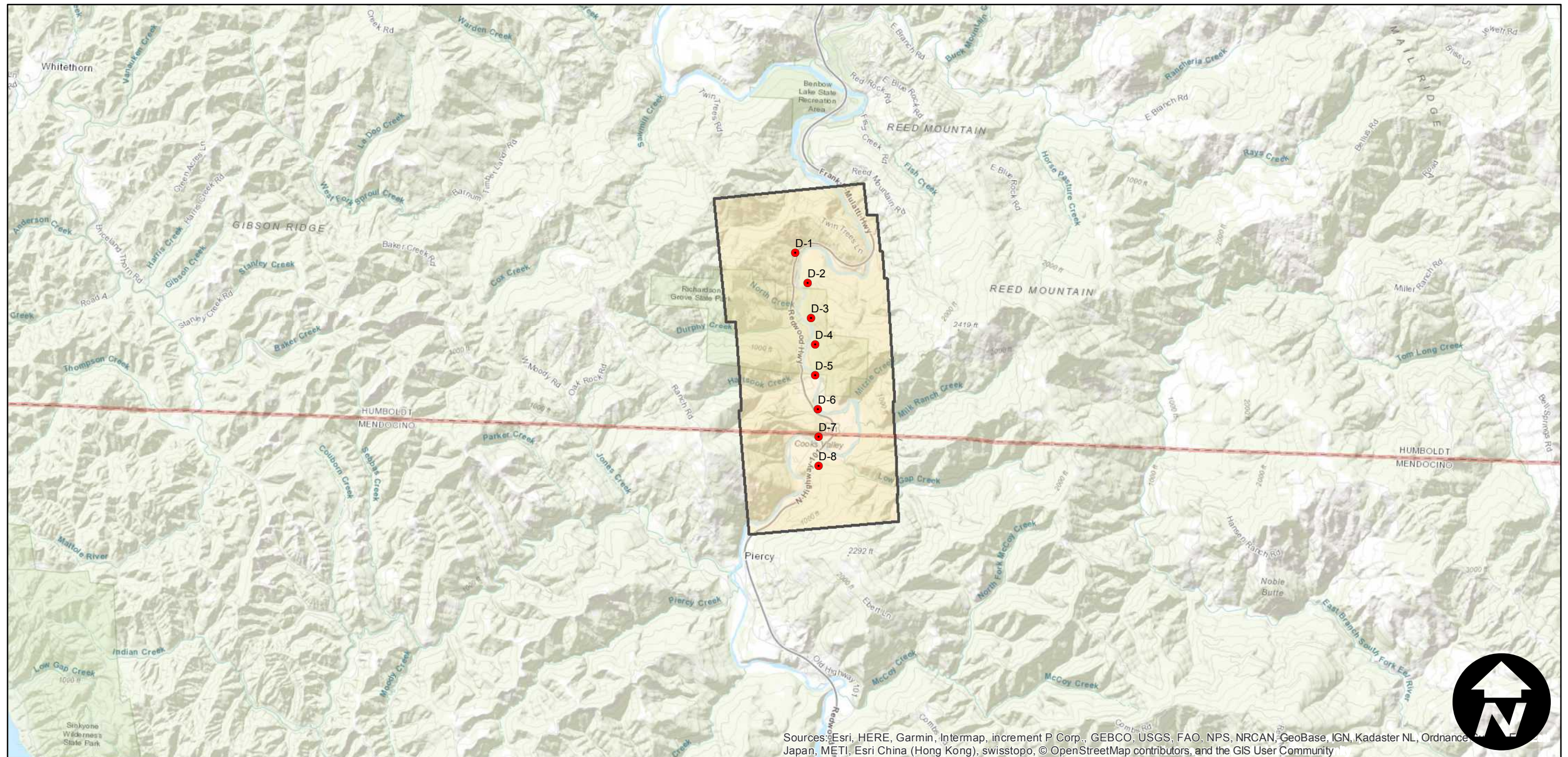
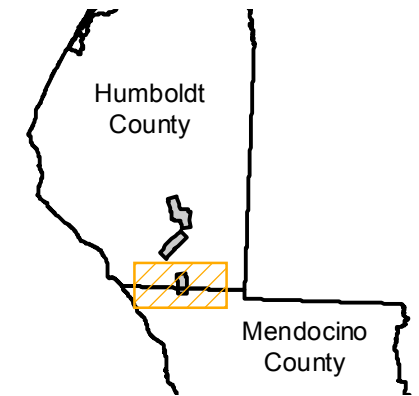
Counties: Humboldt  
 Flight date(s): 03-21-1932  
 Scale: 1:12,000  
 Overlap: 60-80%

Complete Metadata:  
<https://www.library.ucsb.edu/src/airphotos/aerial-photography-information>

Note: South Fork Eel River: vicinity of Miranda, Redway, and Cooks Valley. Some copy negatives acquired 1986, made from original nitrate film. Prints acquired from Whittier College, January 2013.

- MIL owns frame
- MIL does not own frame

## FLIGHT LOCATION



Sources: Esri, HERE, Garmin, Intermap, increment P Corp., GEBCO, USGS, FAO, NPS, NRCAN, GeoBase, IGN, Kadaster NL, Ordnance Survey, Esri China (Hong Kong), Swisstopo, © OpenStreetMap contributors, and the GIS User Community

0 1 2 4 Miles

Index to Aerial Photography  
 Page 3 of 3

Scale of this index: 1:80,000