

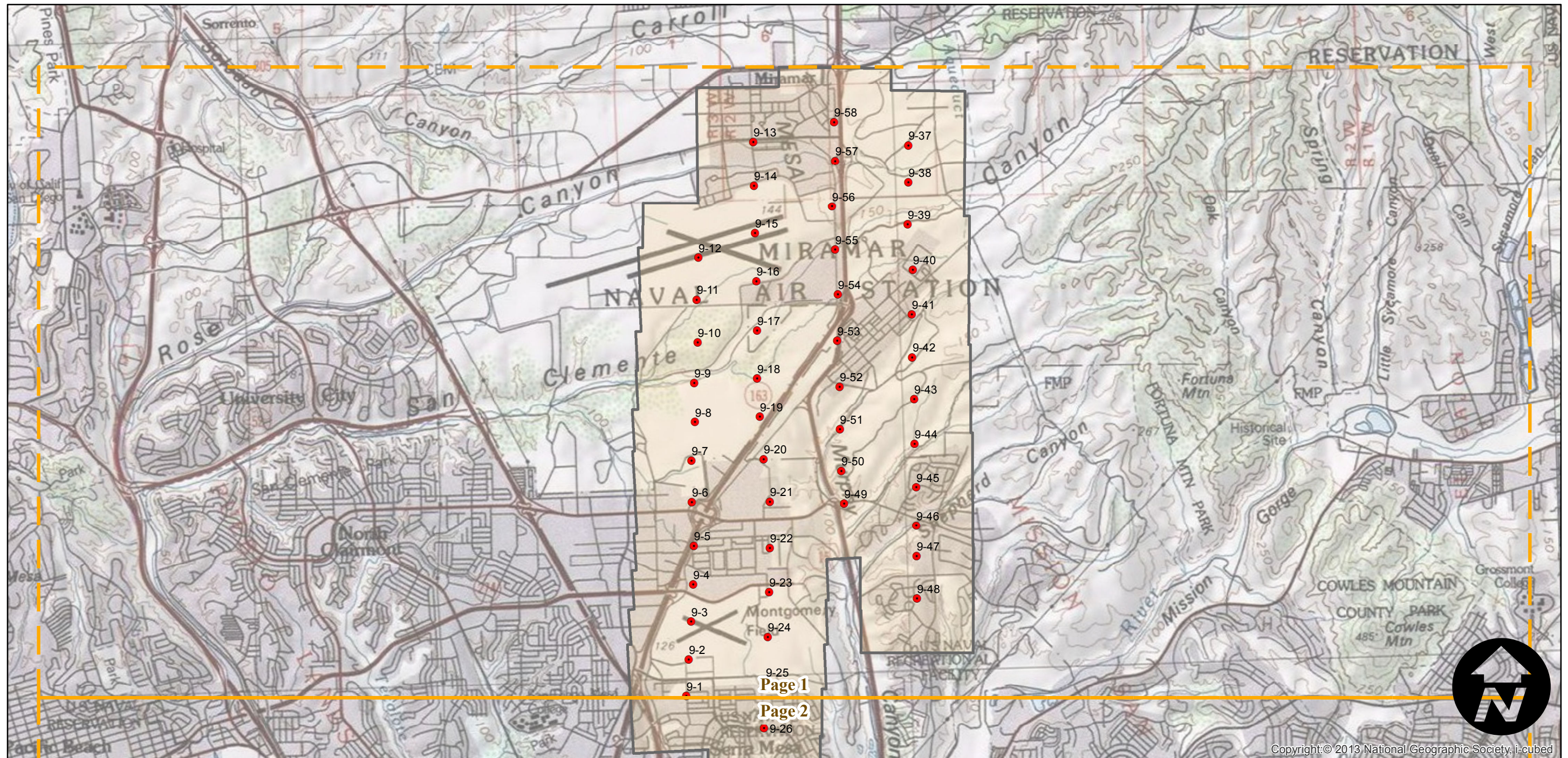
C-19500 (1:7K)

Counties: San Diego
Flight date(s): 11-01-1953 to 02-01-1954
Scale: 1:7,200
Overlap: 60%

Complete Metadata:
<http://www.library.ucsb.edu/mil/aerial-photography-tools>

Note: Vicinity of San Diego (city): Murphy Canyon (Miramar Naval Air Station and Montgomery Field) to National City and Coronado.
Imagery acquired from Whittier College, January 2013.

- MIL owns frame
- MIL does not own frame



0 1 2 4 Miles

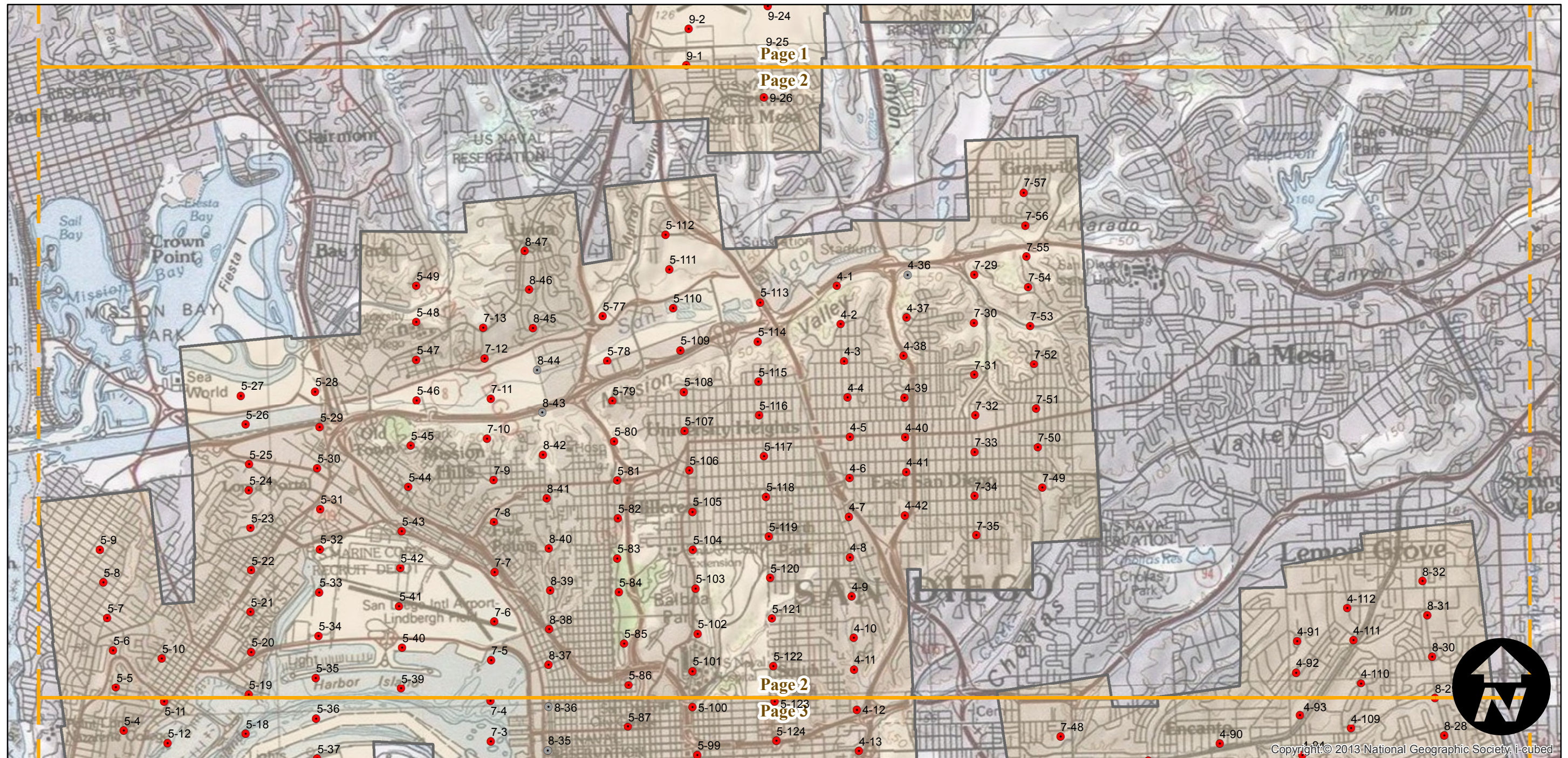
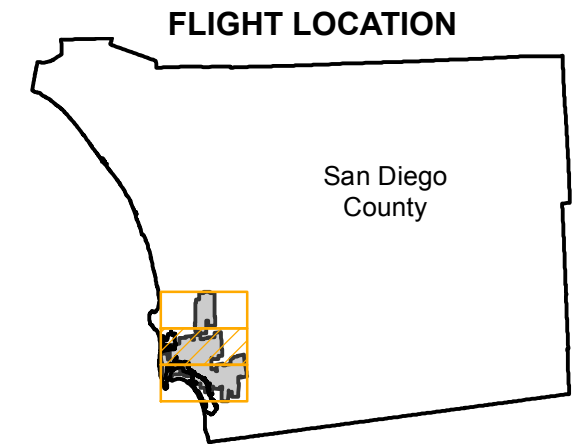
C-19500 (1:7K)

Counties: San Diego
Flight date(s): 11-01-1953 to 02-01-1954
Scale: 1:7,200
Overlap: 60%

Complete Metadata:
<http://www.library.ucsb.edu/mil/aerial-photography-tools>

Note: Vicinity of San Diego (city): Murphy Canyon (Miramar Naval Air Station and Montgomery Field) to National City and Coronado.
Imagery acquired from Whittier College, January 2013.

- MIL owns frame
- MIL does not own frame



0 1 2 4 Miles

Index to Aerial Photography
Page 2 of 3

Scale of this index: 1:62,500

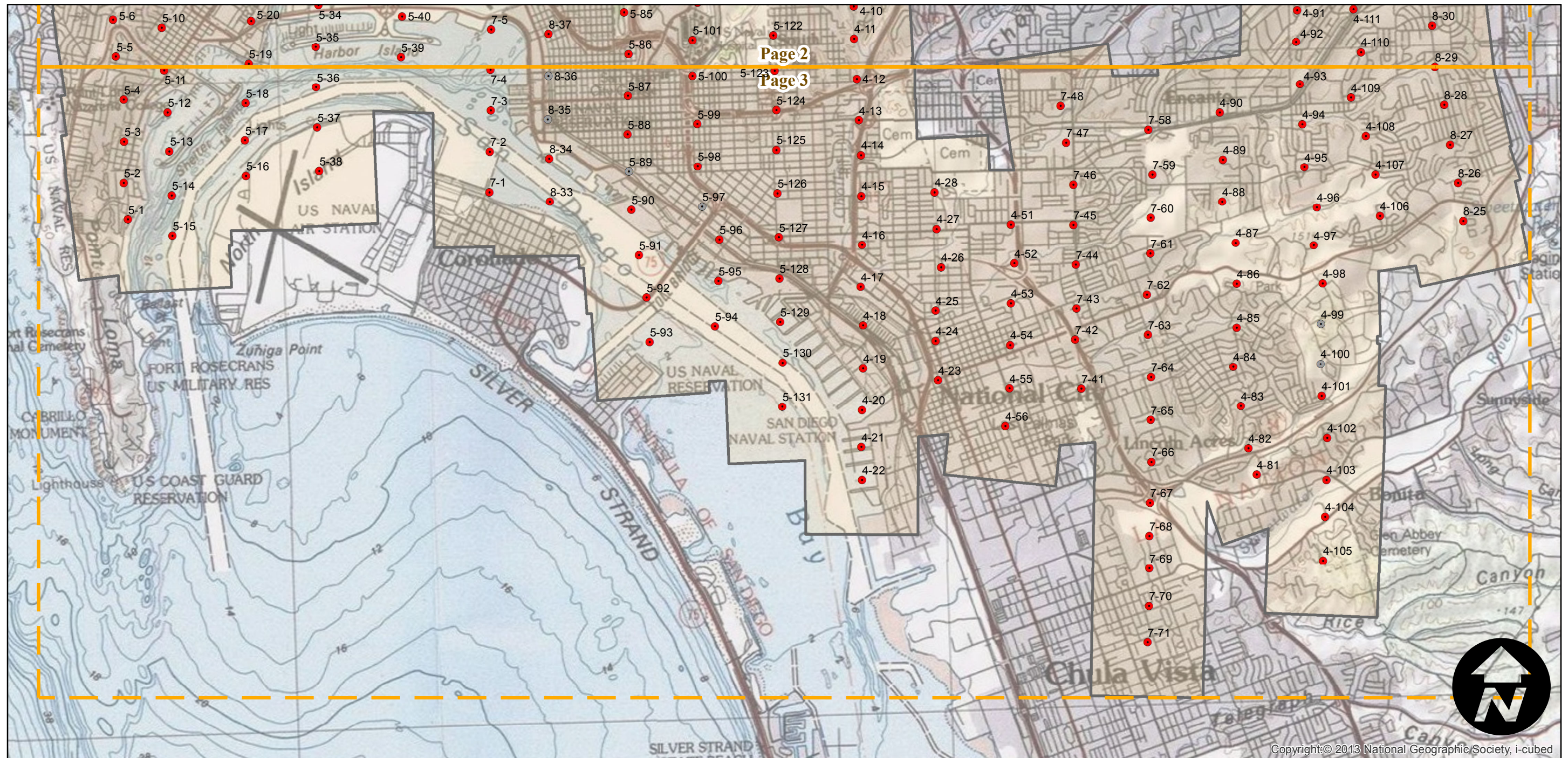
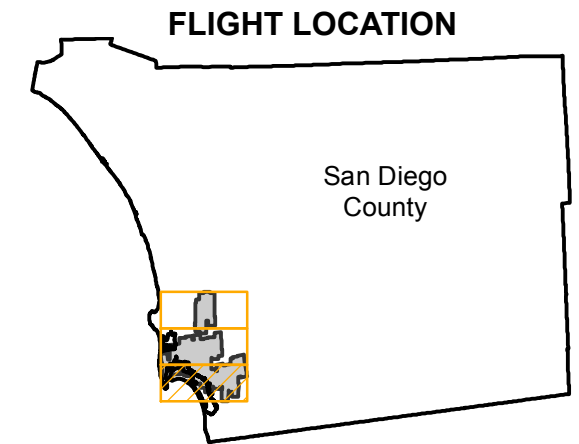
C-19500 (1:7K)

Counties: San Diego
Flight date(s): 11-01-1953 to 02-01-1954
Scale: 1:7,200
Overlap: 60%

Complete Metadata:
<http://www.library.ucsb.edu/mil/aerial-photography-tools>

Note: Vicinity of San Diego (city): Murphy Canyon (Miramar Naval Air Station and Montgomery Field) to National City and Coronado.
Imagery acquired from Whittier College, January 2013.

- MIL owns frame
- MIL does not own frame



0 1 2 4 Miles

Index to Aerial Photography
Page 3 of 3

Scale of this index: 1:62,500

Copyright:© 2013 National Geographic Society, i-cubed