

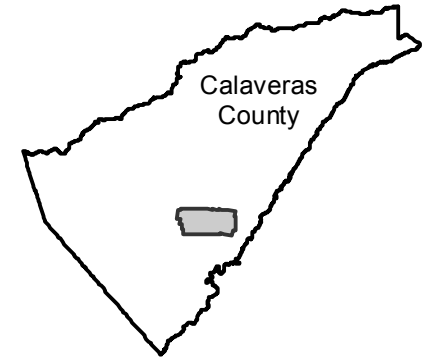
# C-1860

Counties: Calaveras  
Flight date(s): 12-16-1931  
Scale: 1:9,600  
Overlap: 60-80%

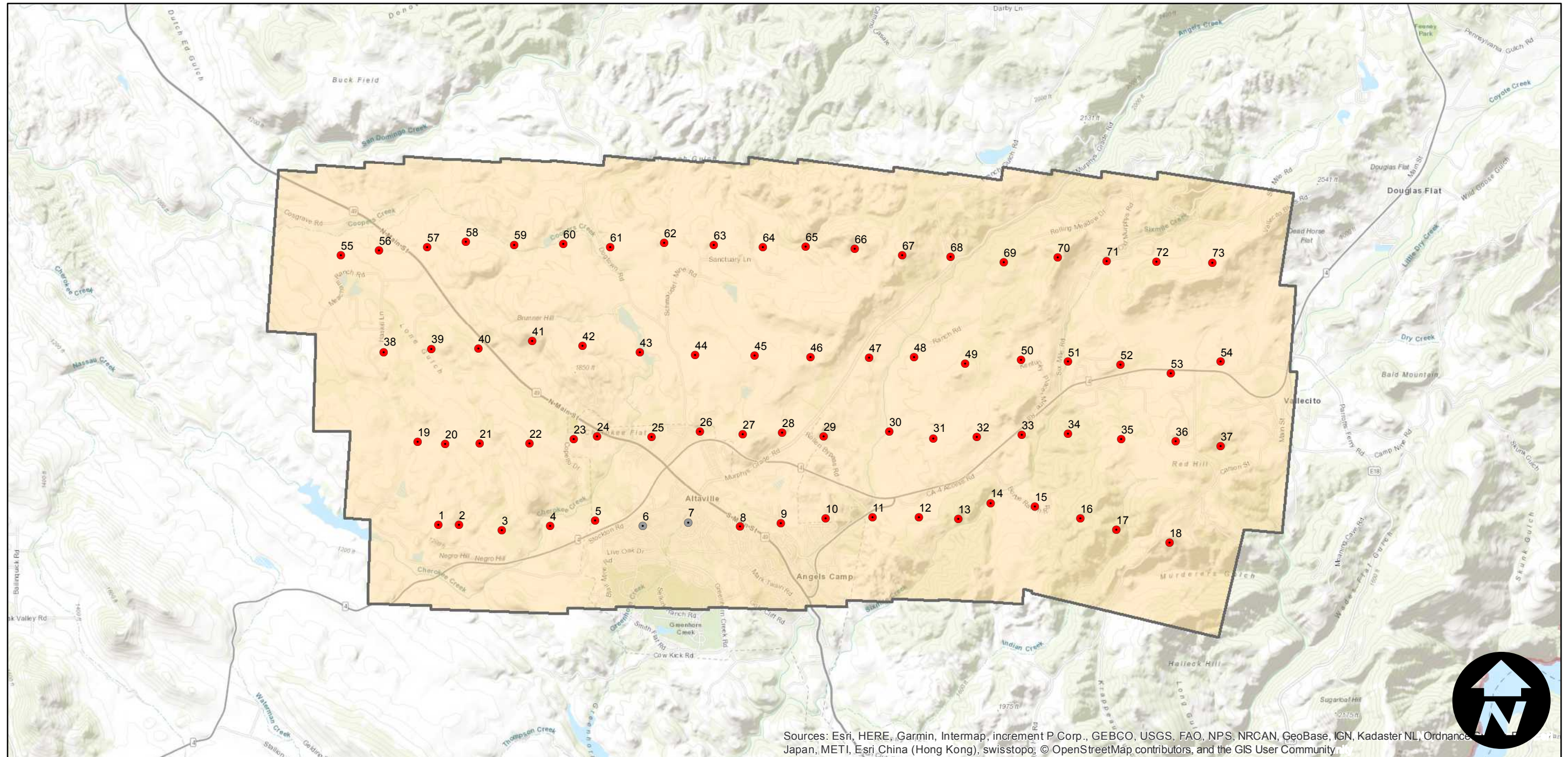
Complete Metadata:  
<https://www.library.ucsb.edu/src/airphotos/aerial-photography-information>

Note: Angels Camp and vicinity. Acquired from Whittier College, January 2013.

## FLIGHT LOCATION



- MIL owns frame
- MIL does not own frame



Sources: Esri, HERE, Garmin, Intermap, increment P Corp., GEBCO, USGS, FAO, NPS, NRCAN, GeoBase, IGN, Kadaster NL, Ordnance Survey, Esri, China (Hong Kong), Swisstopo, © OpenStreetMap contributors, and the GIS User Community

0 1 2 4 Miles

Index to Aerial Photography  
Page 1 of 1

Scale of this index: 1:50,000