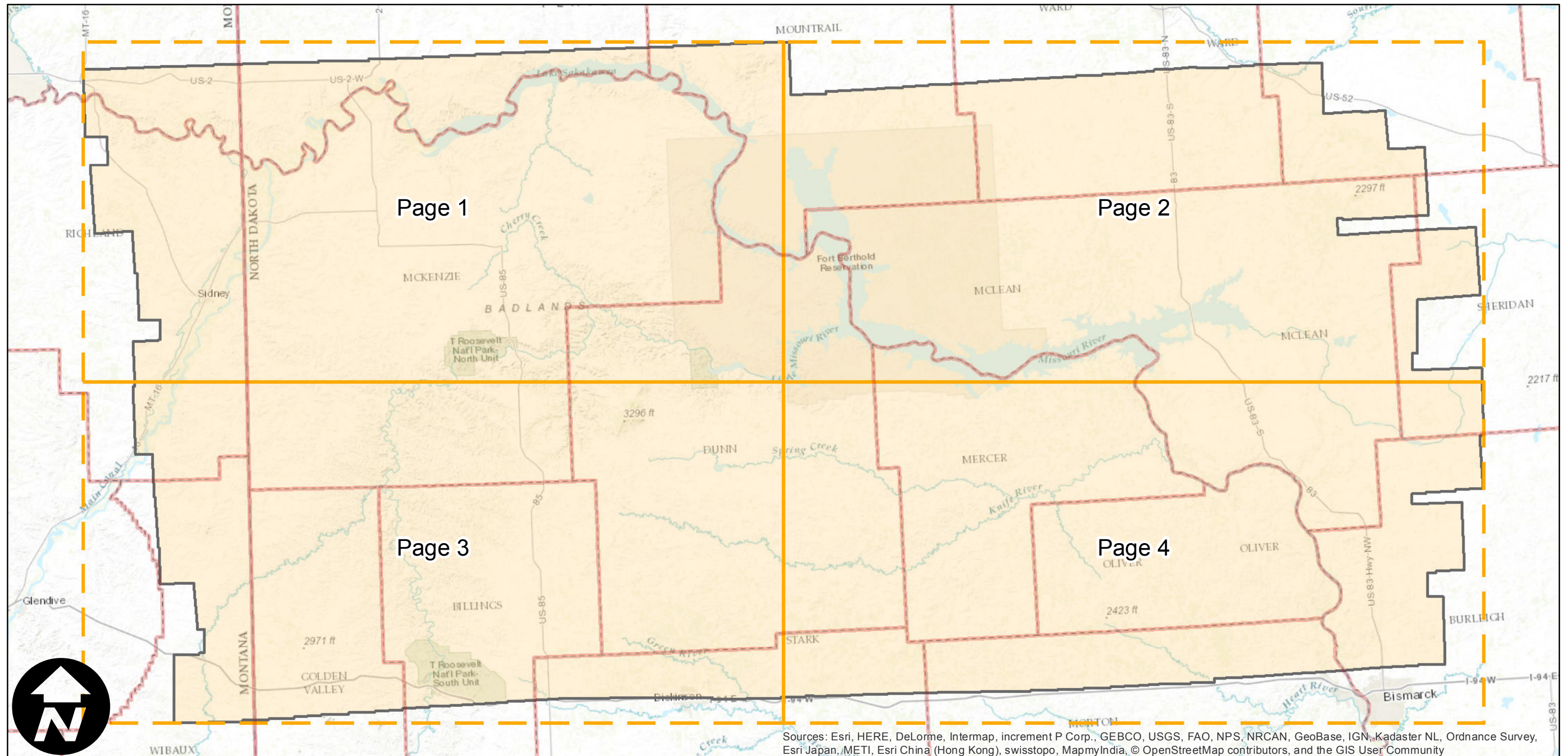
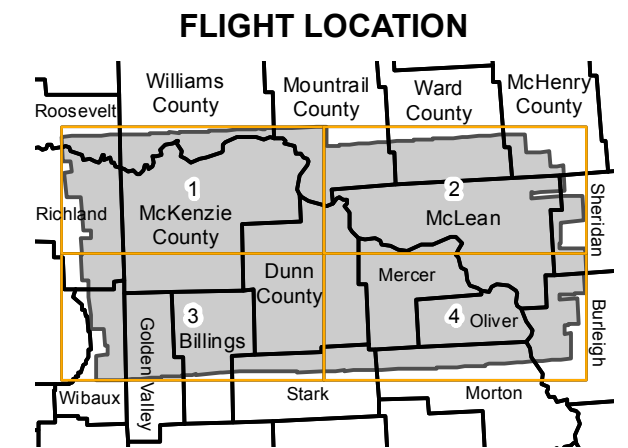


# C-17800

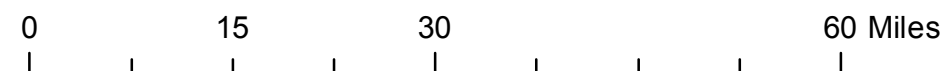
Counties: Montana: Richland, Roosevelt, Wibaux. North Dakota: Billings, Burleigh, Dunn, Golden Valley, McHenry, McKenzie, McLean, Mercer, Mountrail, Oliver, Sheridan, Ward, Williams.  
 Flight date(s): 07-01-1952 to 08-31-1952  
 Scale: 1:63,360  
 Overlap: 60%

Note: Central Williston Basin. Vicinity of Missouri River and Lake Sakakawea from Yellowstone River to area north of Bismarck, ND.

Complete Metadata:  
<http://www.library.ucsb.edu/map-imagery-lab/aerial-photography-information>



Sources: Esri, HERE, DeLorme, Intermap, increment P Corp., GEBCO, USGS, FAO, NPS, NRCAN, GeoBase, IGN, Kadaster NL, Ordnance Survey, Esri Japan, METI, Esri China (Hong Kong), swisstopo, MapmyIndia, © OpenStreetMap contributors, and the GIS User Community



Index to Aerial Photography  
 Page Key

Scale of this index: 1:900,000

# C-17800

Counties: Montana: Richland, Roosevelt, Wibaux. North Dakota: Billings, Burleigh, Dunn, Golden Valley, McHenry, McKenzie, McLean, Mercer, Mountrail, Oliver, Sheridan, Ward, Williams.

Flight date(s): 07-01-1952 to 08-31-1952

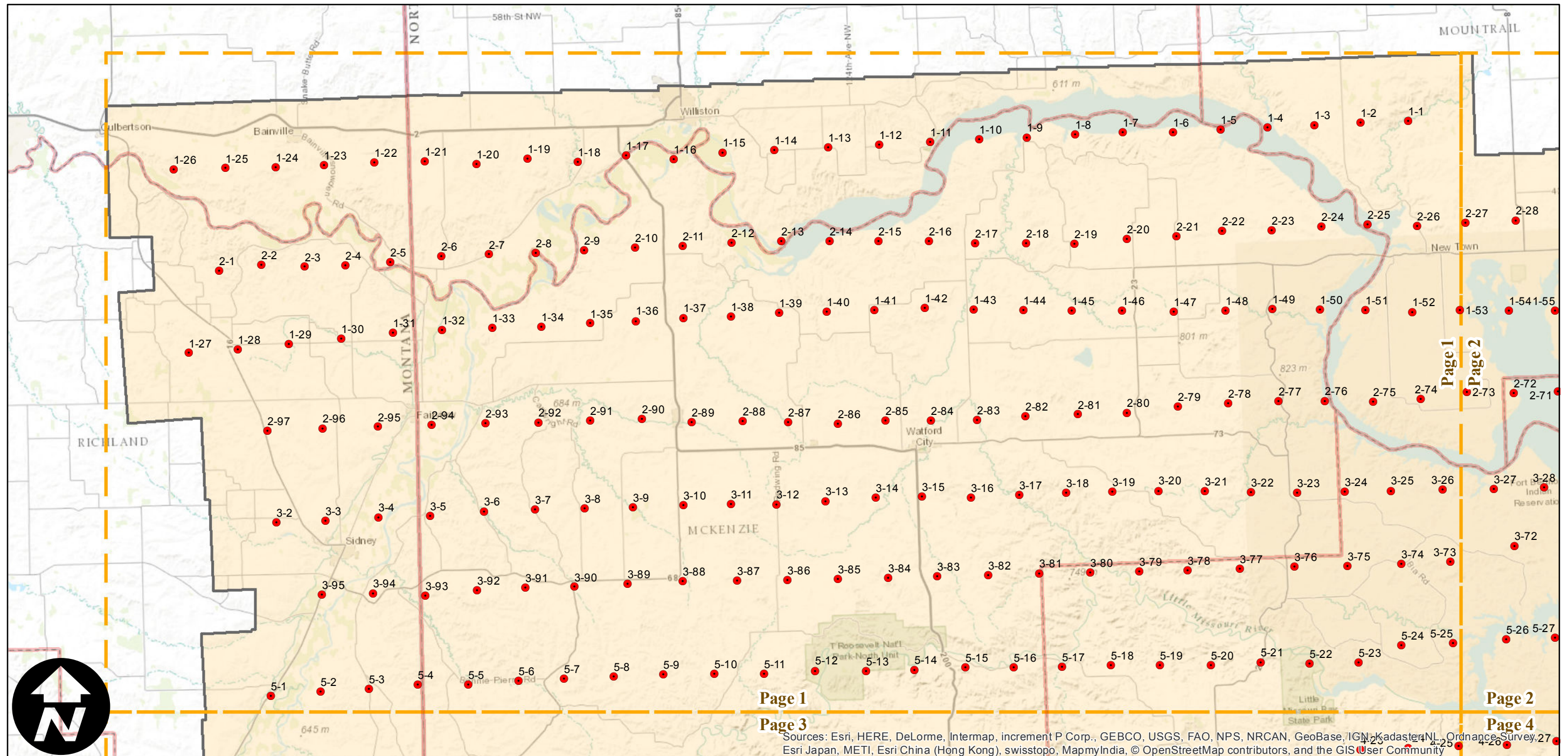
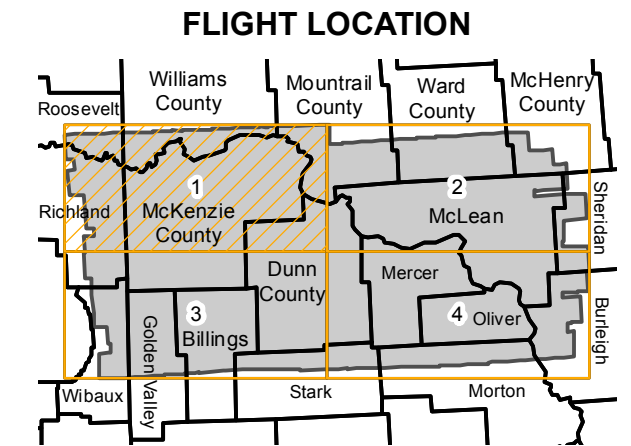
Scale: 1:63,360

Overlap: 60%

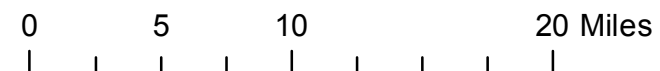
Complete Metadata:

<http://www.library.ucsb.edu/map-imagery-lab/aerial-photography-information>

Note: Central Williston Basin. Vicinity of Missouri River and Lake Sakakawea from Yellowstone River to area north of Bismarck, ND.



Sources: Esri, HERE, DeLorme, Intermap, increment P Corp., GEBCO, USGS, FAO, NPS, NRCAN, GeoBase, IGN, Kadaster NL, Ordnance Survey, Esri Japan, METI, Esri China (Hong Kong), swisstopo, MapmyIndia, © OpenStreetMap contributors, and the GIS User Community

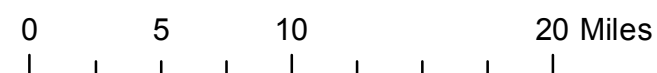
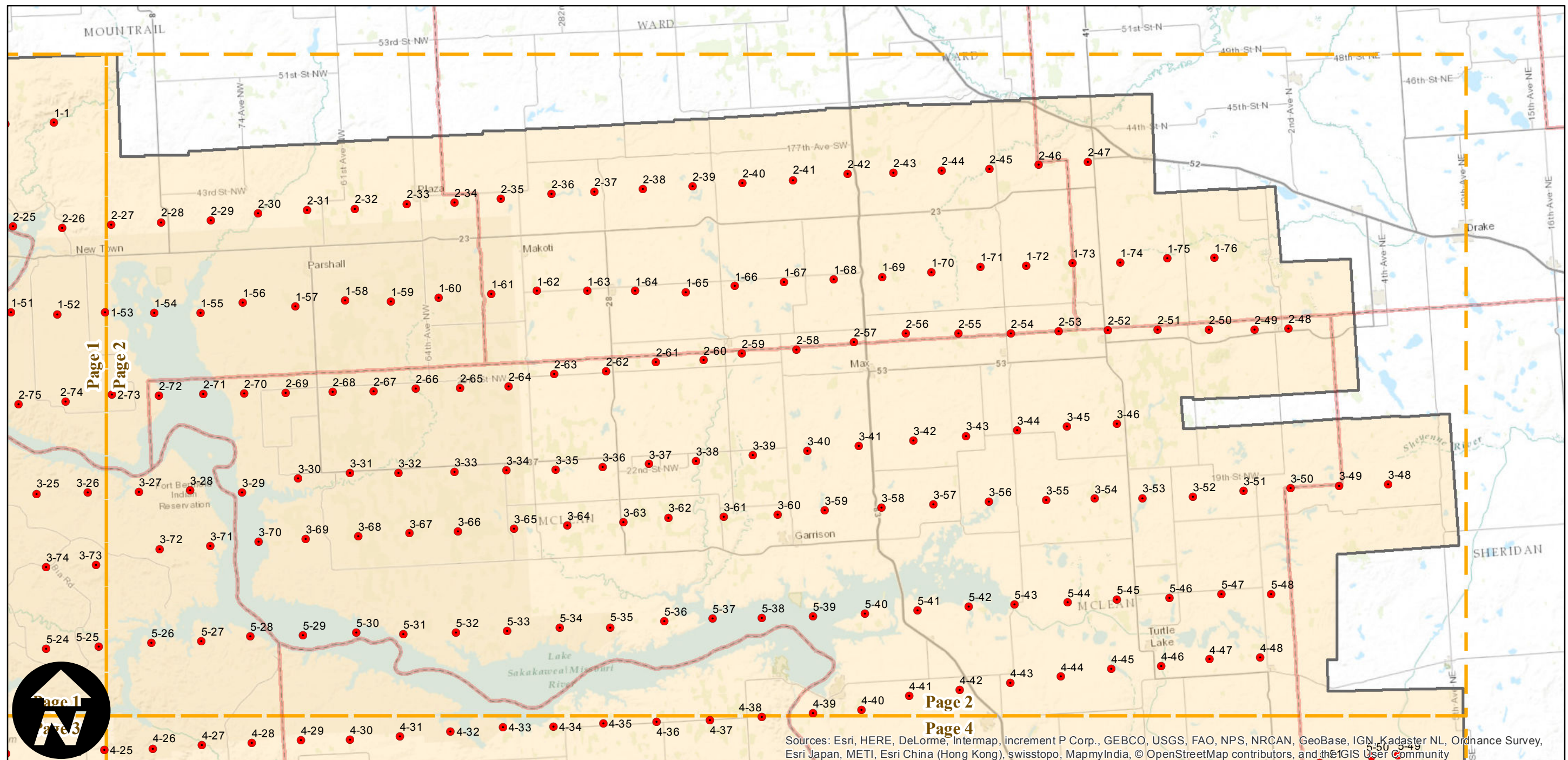
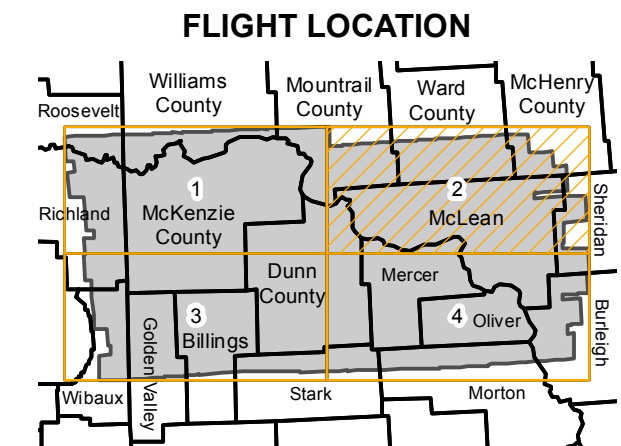


# C-17800

Counties: Montana: Richland, Roosevelt, Wibaux. North Dakota: Billings, Burleigh, Dunn, Golden Valley, McHenry, McKenzie, McLean, Mercer, Mountrail, Oliver, Sheridan, Ward, Williams.  
 Flight date(s): 07-01-1952 to 08-31-1952  
 Scale: 1:63,360  
 Overlap: 60%

Note: Central Williston Basin. Vicinity of Missouri River and Lake Sakakawea from Yellowstone River to area north of Bismarck, ND.

Complete Metadata:  
<http://www.library.ucsb.edu/map-imagery-lab/aerial-photography-information>



Sources: Esri, HERE, DeLorme, Intermap, increment P Corp., GEBCO, USGS, FAO, NPS, NRCAN, GeoBase, IGN, Kadaster NL, Ordnance Survey, Esri Japan, METI, Esri China (Hong Kong), swisstopo, MapmyIndia, © OpenStreetMap contributors, and the GIS User Community

# C-17800

Counties: Montana: Richland, Roosevelt, Wibaux. North Dakota: Billings, Burleigh, Dunn, Golden Valley, McHenry, McKenzie, McLean, Mercer, Mountrail, Oliver, Sheridan, Ward, Williams.

Flight date(s): 07-01-1952 to 08-31-1952

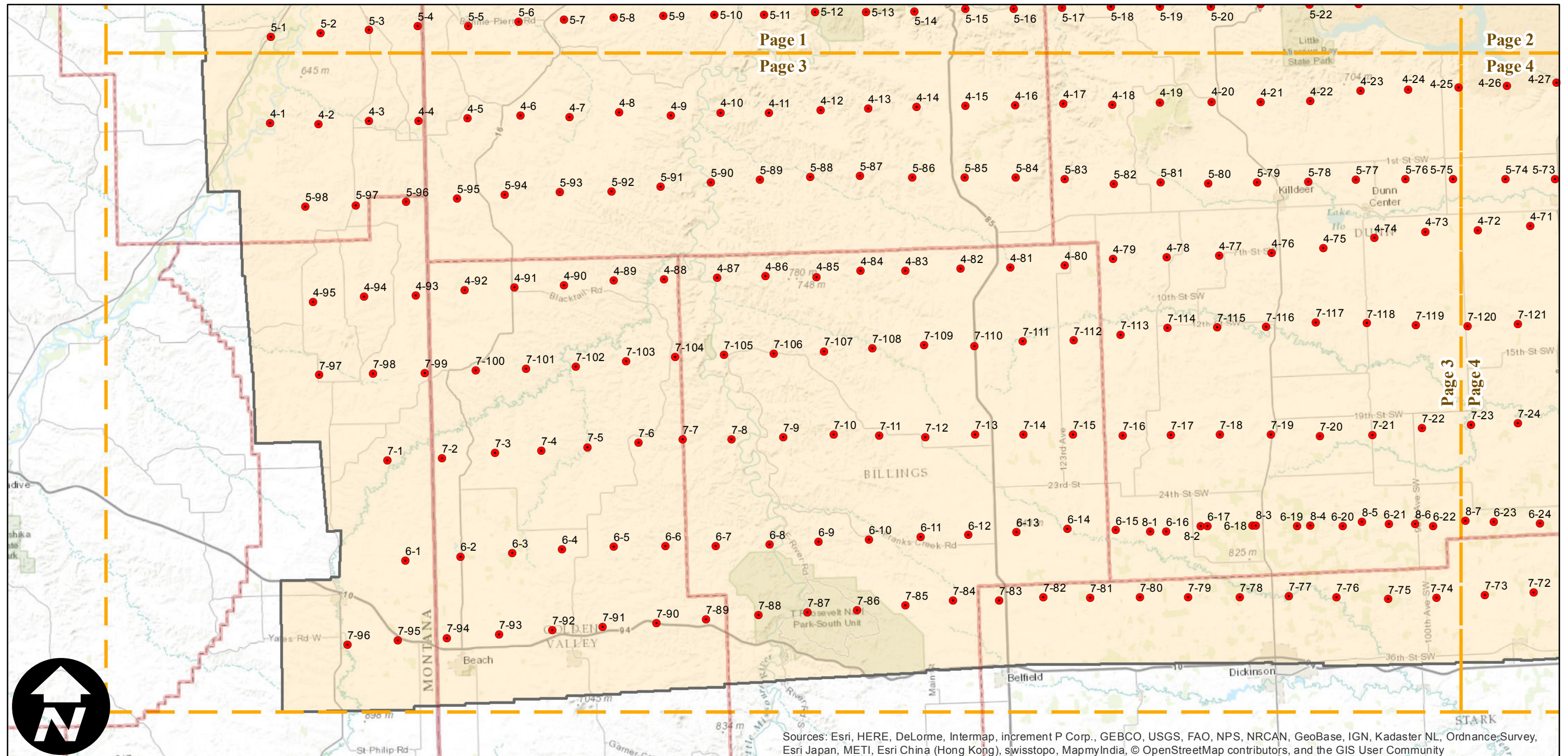
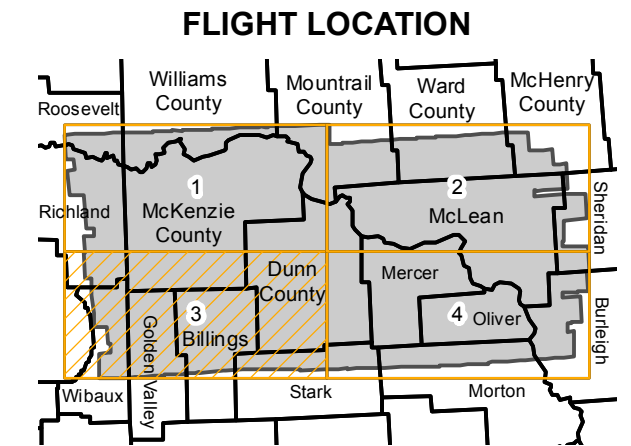
Scale: 1:63,360

Overlap: 60%

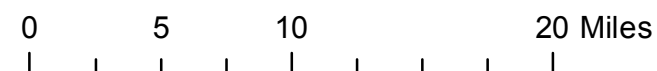
Complete Metadata:

<http://www.library.ucsb.edu/map-imagery-lab/aerial-photography-information>

Note: Central Williston Basin. Vicinity of Missouri River and Lake Sakakawea from Yellowstone River to area north of Bismarck, ND.



Sources: Esri, HERE, DeLorme, Intermap, increment P Corp., GEBCO, USGS, FAO, NPS, NRCAN, GeoBase, IGN, Kadaster NL, Ordnance Survey, Esri Japan, METI, Esri China (Hong Kong), swisstopo, MapmyIndia, © OpenStreetMap contributors, and the GIS User Community

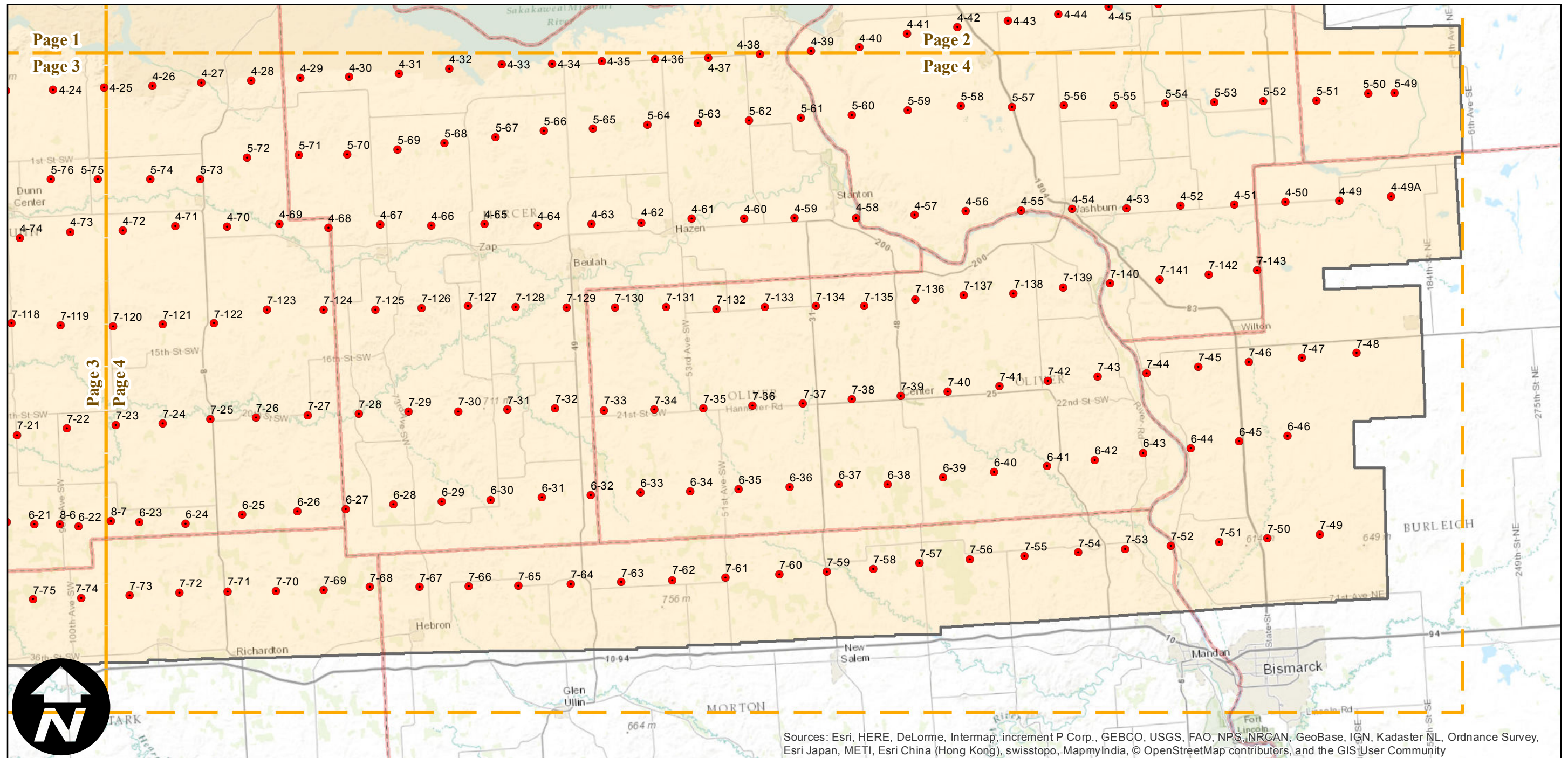
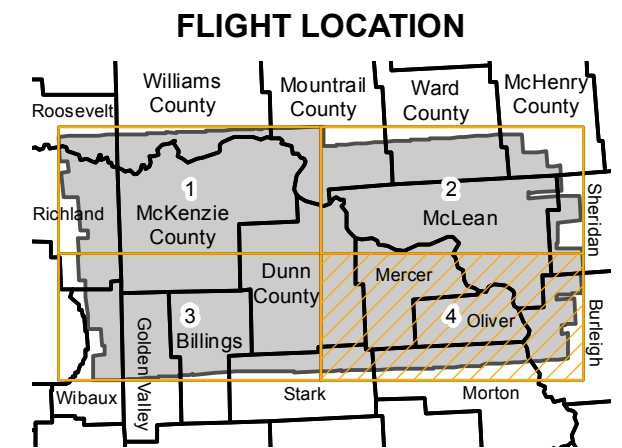


# C-17800

Counties: Montana: Richland, Roosevelt, Wibaux. North Dakota: Billings, Burleigh, Dunn, Golden Valley, McHenry, McKenzie, McLean, Mercer, Mountrail, Oliver, Sheridan, Ward, Williams.  
 Flight date(s): 07-01-1952 to 08-31-1952  
 Scale: 1:63,360  
 Overlap: 60%

Note: Central Williston Basin. Vicinity of Missouri River and Lake Sakakawea from Yellowstone River to area north of Bismarck, ND.

Complete Metadata:  
<http://www.library.ucsb.edu/map-imagery-lab/aerial-photography-information>



Sources: Esri, HERE, DeLorme, Intermap, increment P Corp., GEBCO, USGS, FAO, NPS, NRCAN, GeoBase, IGN, Kadaster NL, Ordnance Survey, Esri Japan, METI, Esri China (Hong Kong), swisstopo, MapmyIndia, © OpenStreetMap contributors, and the GIS User Community

