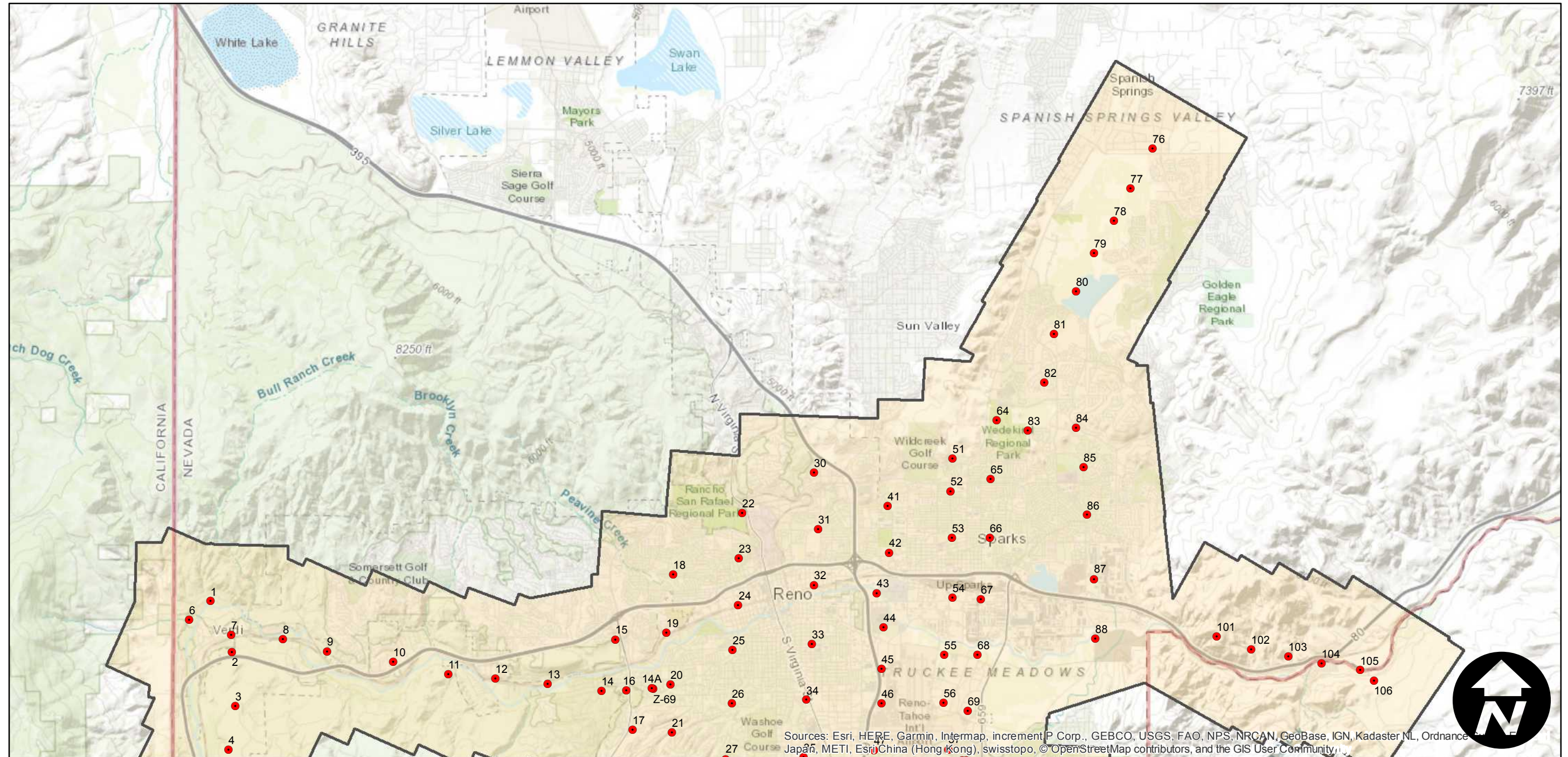
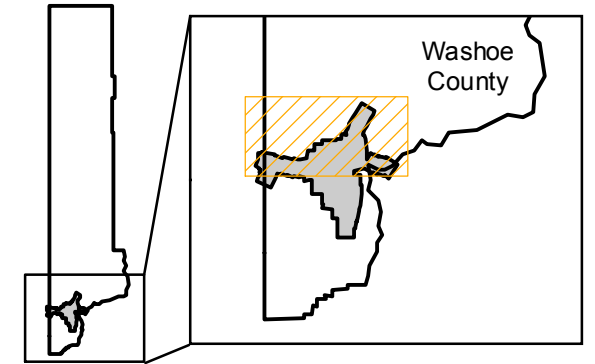


C-1770

Counties: Washoe (Nevada)
Flight date(s): 09-26-1931 to 10-01-1931
Scale: 1:24,000
Overlap: 60-95%

Note: Vicinity of Reno, Sparks, and Verdi. Imagery acquired from Whittier College, January 2013. Nitrate negatives scanned, March 2015.

FLIGHT LOCATION



Sources: Esri, HERE, Garmin, Intermap, increment P Corp., GEBCO, USGS, FAO, NPS, NRCAN, GeoBase, IGN, Kadaster NL, Ordnance Survey, Esri Japan, METI, Esri China (Hong Kong), swisstopo, © OpenStreetMap contributors, and the GIS User Community

0 1.5 3 6 Miles

Index to Aerial Photography
Page 1 of 2

Scale of this index: 1:110,000

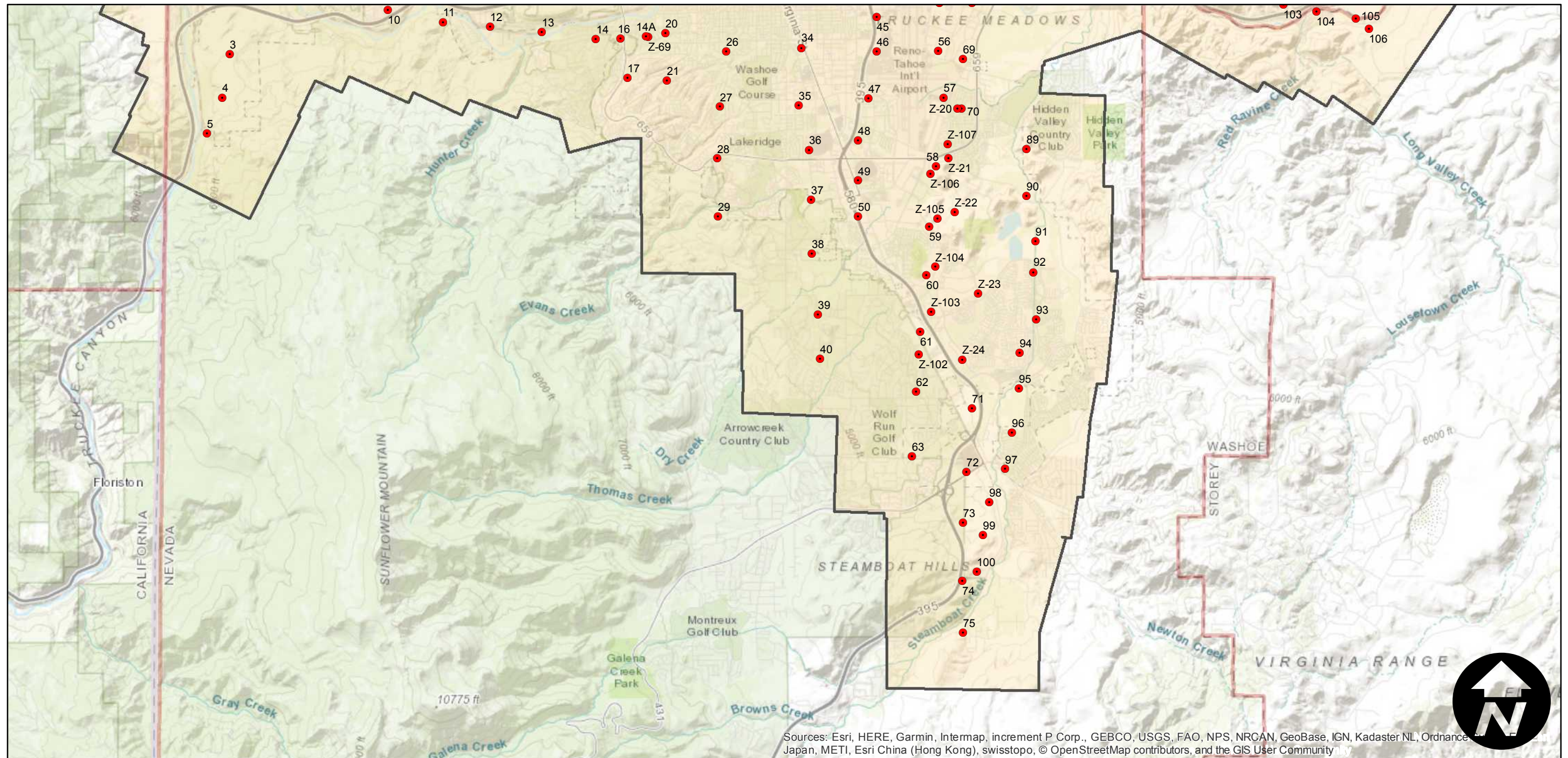
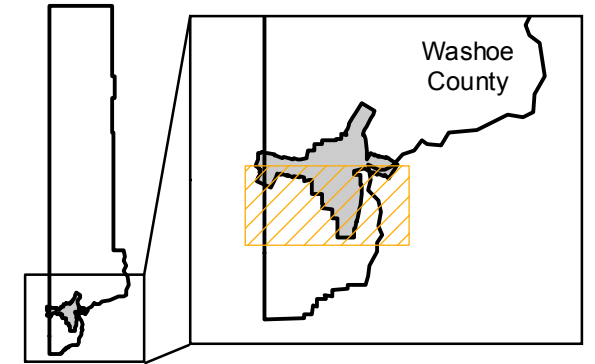
C-1770

Counties: Washoe (Nevada)
Flight date(s): 09-26-1931 to 10-01-1931
Scale: 1:24,000
Overlap: 60-95%

Complete Metadata:
<https://www.library.ucsb.edu/src/airphotos/aerial-photography-information>

Note: Vicinity of Reno, Sparks, and Verdi. Imagery acquired from Whittier College, January 2013. Nitrate negatives scanned, March 2015.

FLIGHT LOCATION



Sources: Esri, HERE, Garmin, Intermap, increment P Corp., GEBCO, USGS, FAO, NPS, NRCAN, GeoBase, IGN, Kadaster NL, Ordnance Survey, Esri Japan, METI, Esri China (Hong Kong), swisstopo, © OpenStreetMap contributors, and the GIS User Community

0 1.5 3 6 Miles

Index to Aerial Photography
Page 2 of 2

Scale of this index: 1:110,000