

C-163

Counties: Solano, Yolo, Sacramento, San Joaquin, Stanislaus

Flight date(s): 01-01-1928 to 12-31-1928

Scale: 1:14,400

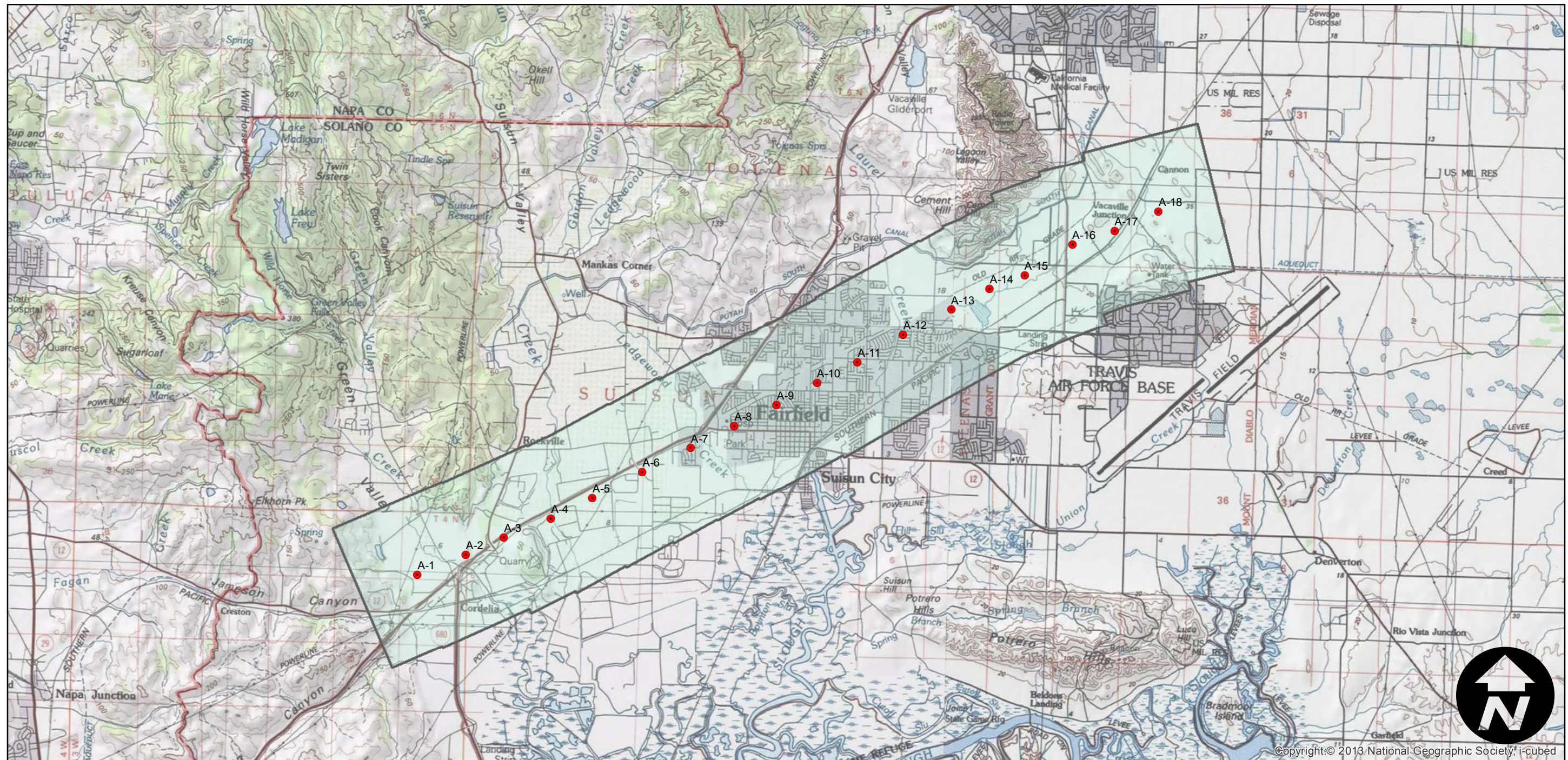
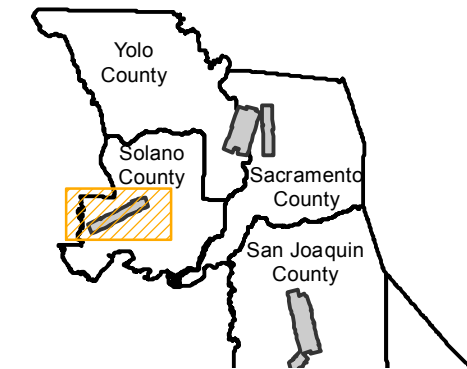
Overlap: 60%

Complete Metadata:

<http://www.library.ucsb.edu/mil/aerial-photography-tools>

Note: Fairfield; Sacramento and Broderick (vicinity of I-5 and SR 99); Stockton to Lathrop (vicinity of SR 99 and I-5); and western section of Modesto to Ceres (vicinity of SR 99). FAS records state area is "Route 4 between Sacramento and Bakersfield." Overlap within flightlines is not consistent. Acquired from Whittier College, January 2013.

FLIGHT LOCATION



0 1.5 3 6 Miles

Index to Aerial Photography
Page 1 of 4

Scale of this index: 1:100,000

C-163

Counties: Solano, Yolo, Sacramento, San Joaquin, Stanislaus

Flight date(s): 01-01-1928 to 12-31-1928

Scale: 1:14,400

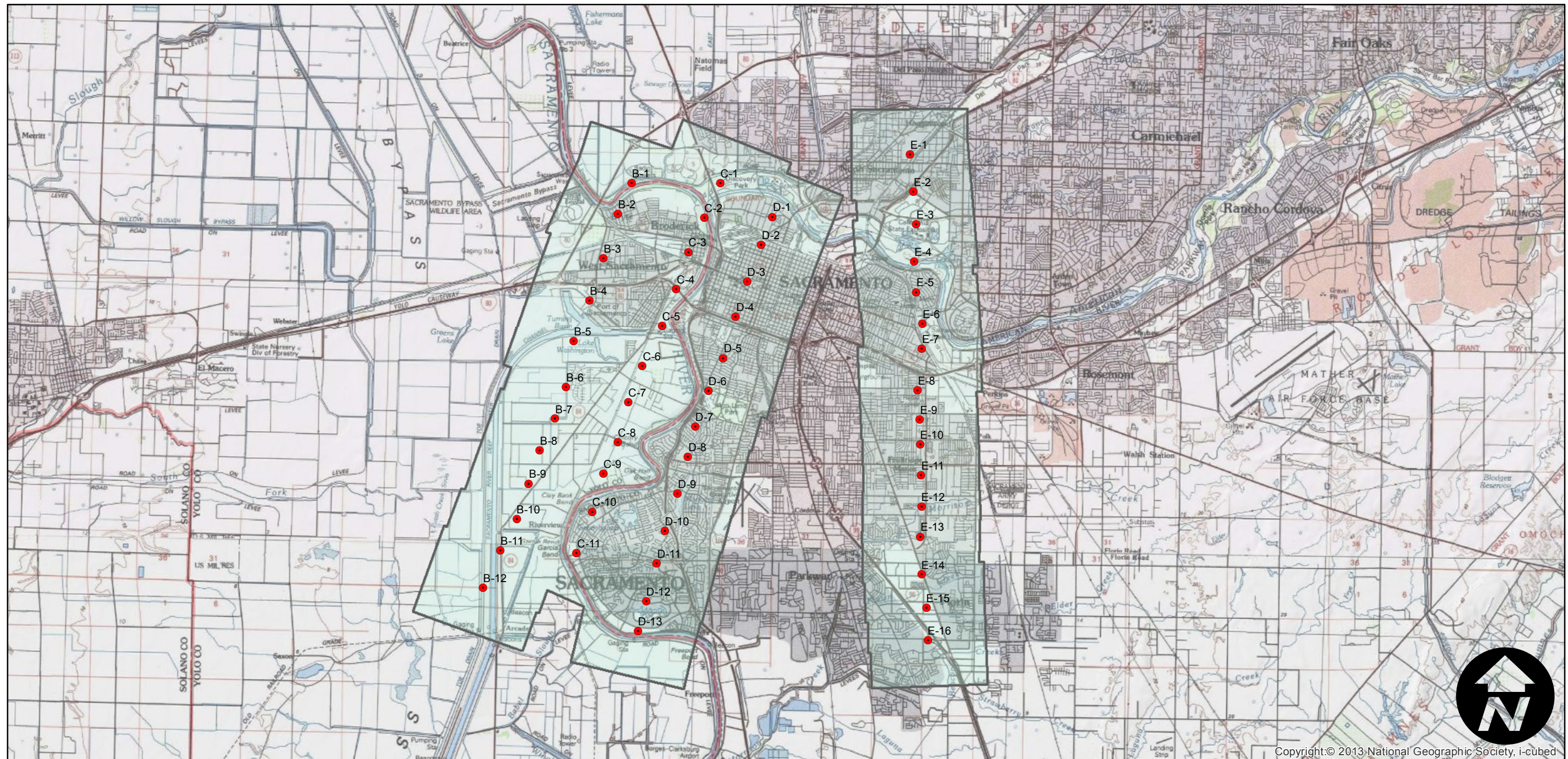
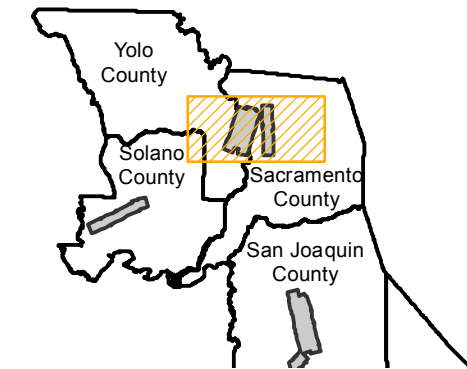
Overlap: 60%

Complete Metadata:

<http://www.library.ucsb.edu/mil/aerial-photography-tools>

Note: Fairfield; Sacramento and Broderick (vicinity of I-5 and SR 99); Stockton to Lathrop (vicinity of SR 99 and I-5); and western section of Modesto to Ceres (vicinity of SR 99). FAS records state area is "Route 4 between Sacramento and Bakersfield." Overlap within flightlines is not consistent. Acquired from Whittier College, January 2013.

FLIGHT LOCATION



Copyright © 2013 National Geographic Society, i-cubed

0 2 4 8 Miles

Index to Aerial Photography
Page 2 of 4

Scale of this index: 1:130,000

C-163

Counties: Solano, Yolo, Sacramento, San Joaquin, Stanislaus

Flight date(s): 01-01-1928 to 12-31-1928

Scale: 1:14,400

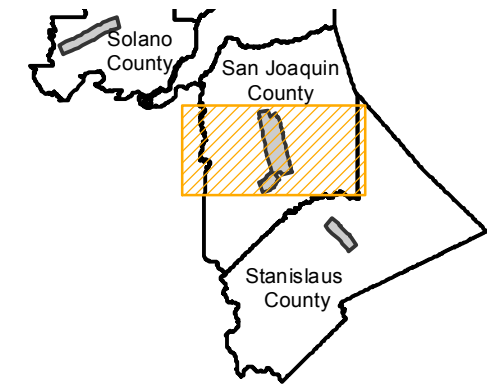
Overlap: 60%

Complete Metadata:

<http://www.library.ucsb.edu/mil/aerial-photography-tools>

Note: Fairfield; Sacramento and Broderick (vicinity of I-5 and SR 99); Stockton to Lathrop (vicinity of SR 99 and I-5); and western section of Modesto to Ceres (vicinity of SR 99). FAS records state area is "Route 4 between Sacramento and Bakersfield." Overlap within flightlines is not consistent. Acquired from Whittier College, January 2013.

FLIGHT LOCATION



Copyright © 2013 National Geographic Society, i-cubed

0 3 6 12 Miles

Index to Aerial Photography
Page 3 of 4

Scale of this index: 1:175,000

C-163

Counties: Solano, Yolo, Sacramento, San Joaquin, Stanislaus

Flight date(s): 01-01-1928 to 12-31-1928

Scale: 1:14,400

Overlap: 60%

Complete Metadata:

<http://www.library.ucsb.edu/mil/aerial-photography-tools>

Note: Fairfield; Sacramento and Broderick (vicinity of I-5 and SR 99); Stockton to Lathrop (vicinity of SR 99 and I-5); and western section of Modesto to Ceres (vicinity of SR 99). FAS records state area is "Route 4 between Sacramento and Bakersfield." Overlap within flightlines is not consistent. Acquired from Whittier College, January 2013.

FLIGHT LOCATION

