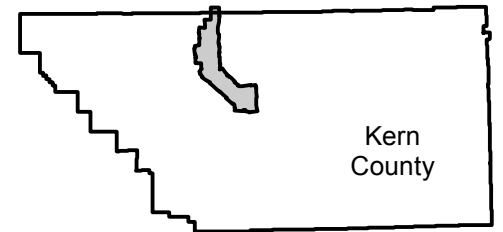


# C-156

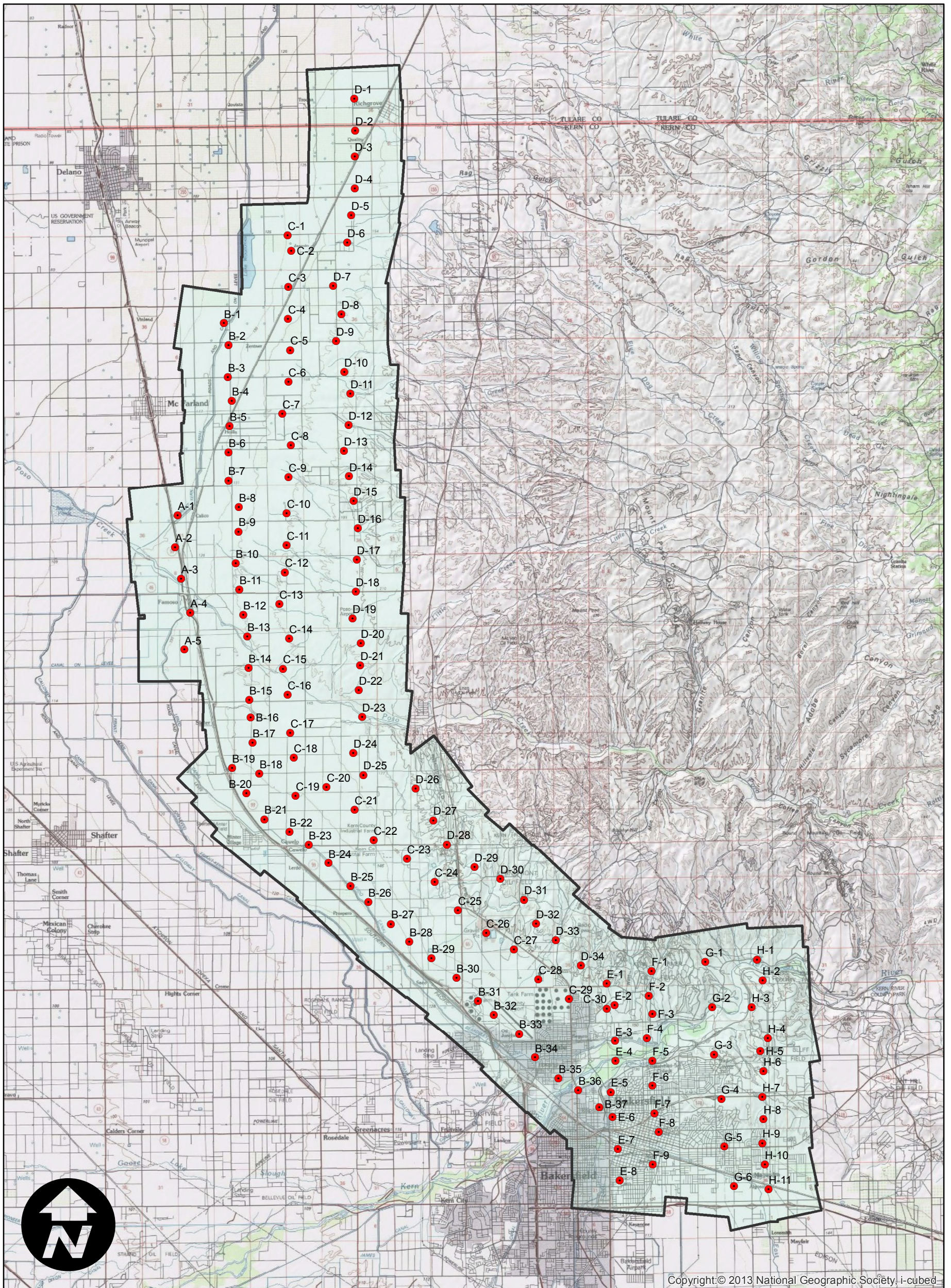
Counties: Kern  
Flight date(s): 01-01-1928 to 01-31-1928  
Scale: 1:18,000  
Overlap: 60%

Note: McFarland to Oildale along  
State Route 99. Acquired from  
Whittier College, January 2013.

## FLIGHT LOCATION



Complete Metadata:  
<http://www.library.ucsb.edu/mil/aerial-photography-tools>



Copyright © 2013 National Geographic Society, i-cubed

0 2 4 8 Miles

Index to Aerial Photography  
Page 1 of 1

Scale of this index: 1:175,000