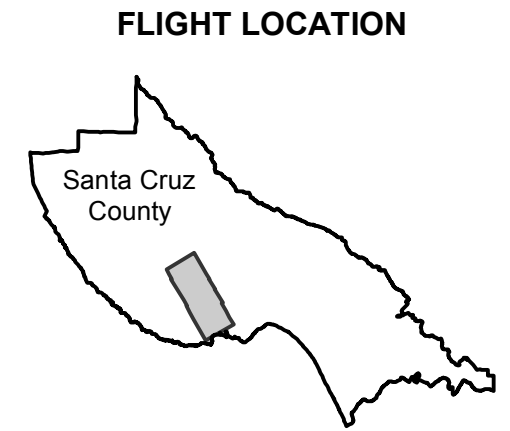


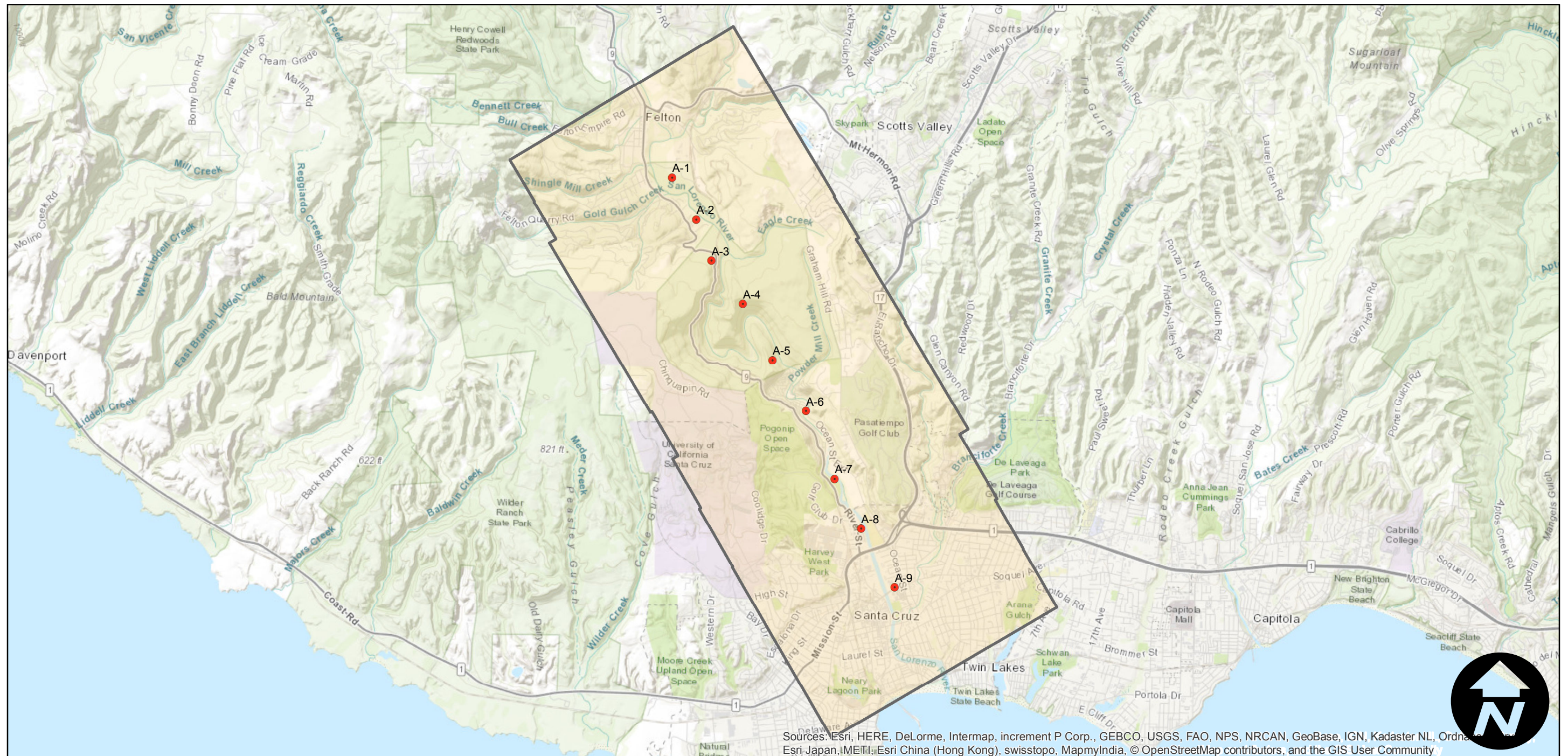
# C-1437 (1:18K)

Counties: Santa Cruz  
Flight date(s): 03-13-1931  
Scale: 1:18,000  
Overlap: 60%

Note: Vicinity of City of Santa Cruz; State Route 9 to Mount Hermon. Copy negatives acquired 1986 made from original nitrate film. Prints and nitrate film acquired from Whittier College, January 2013. Nitrate negatives scanned April 2015.



Complete Metadata:  
<http://www.library.ucsb.edu/mil/aerial-photography-tools>



Sources: Esri, HERE, DeLorme, Intermap, increment P Corp., GEBCO, USGS, FAO, NPS, NRCAN, GeoBase, IGN, Kadaster NL, Ordnance Survey, Esri Japan, METI, Esri China (Hong Kong), swisstopo, MapmyIndia, © OpenStreetMap contributors, and the GIS User Community

