

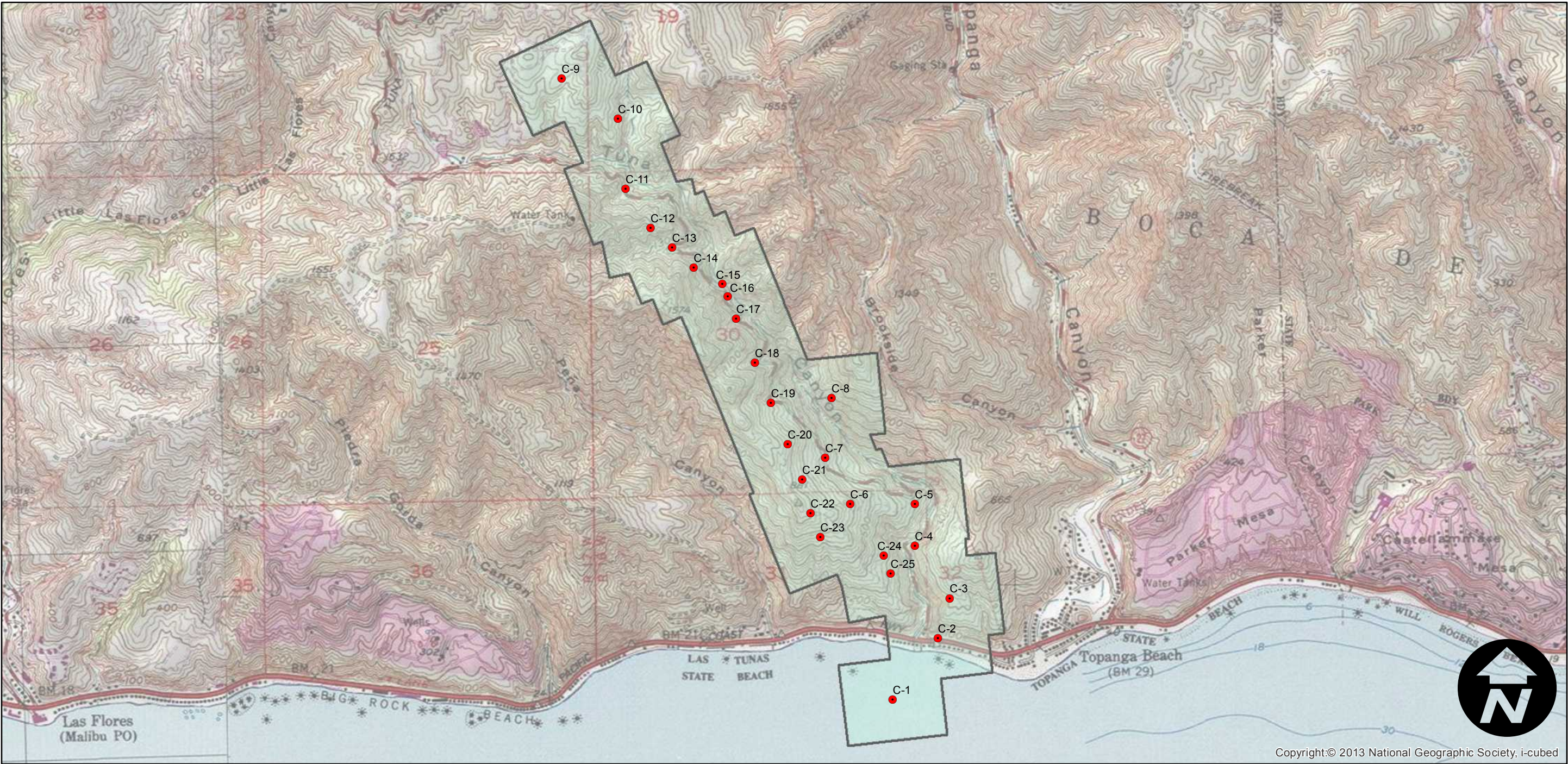
C-1261 (4.8K)

Counties: Los Angeles
Flight date(s): 01-01-1930 to 12-31-1930
Scale: 1:4,800
Overlap: 60%

Complete Metadata:
<http://www.library.ucsb.edu/mil/aerial-photography-tools>

Note: Hollywood Reservoir, Topanga, Fernwood; Santa Monica Mountains from Monte Nido to Castellammare and Old Canyon to Malibu. No exact date for flight, approximate date is based on flights with similar numbers. Overlap within flightlines is not consistent. Imagery January, 1913. Nitrate negatives scanned April 2015.

FLIGHT LOCATION



0 0.2 0.4 0.8 Miles

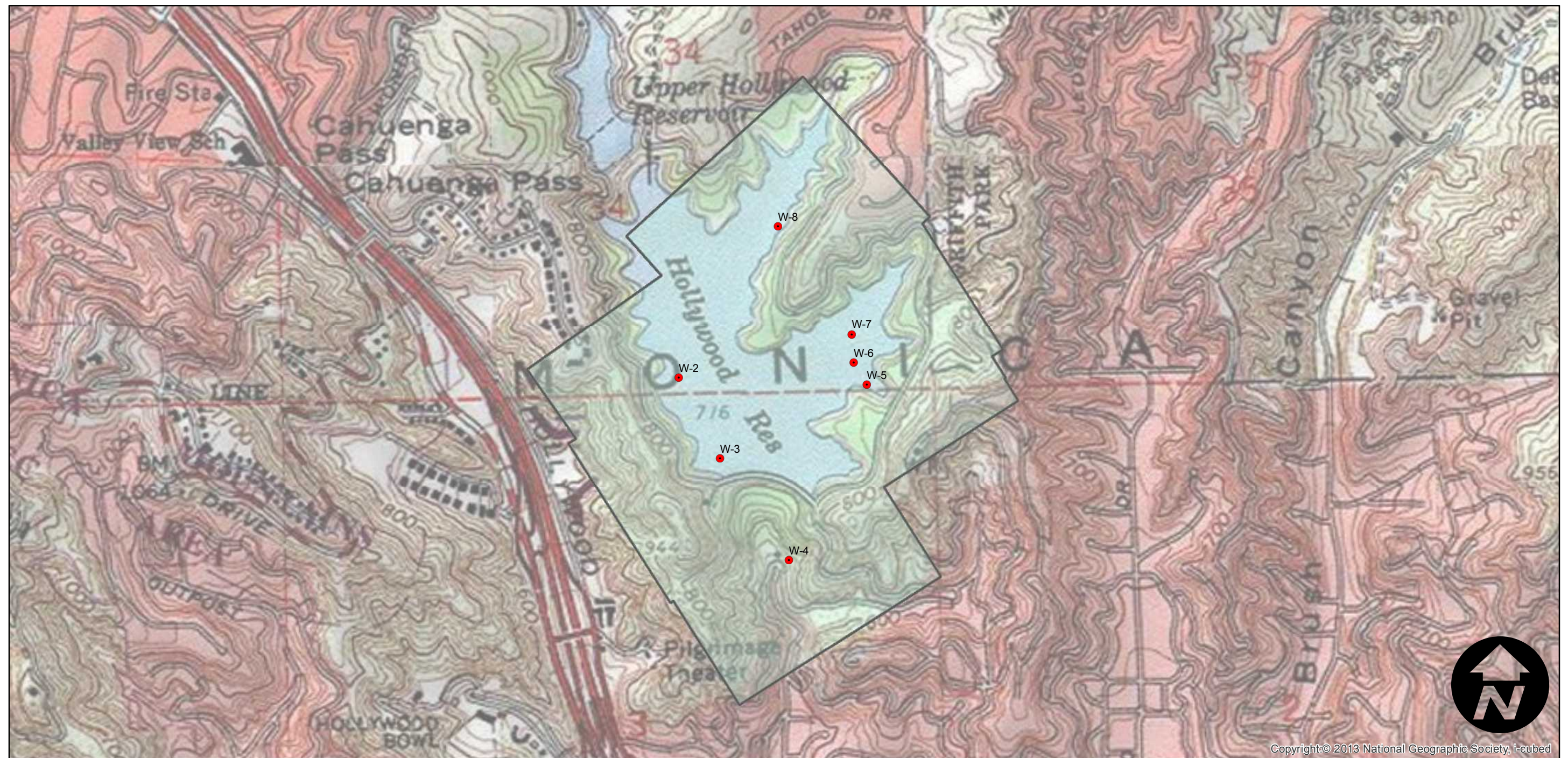
C-1261 (4.8K)

Counties: Los Angeles
Flight date(s): 01-01-1930 to 12-31-1930
Scale: 1:4,800
Overlap: 60%

Complete Metadata:
<http://www.library.ucsb.edu/mil/aerial-photography-tools>

Note: Hollywood Reservoir, Topanga, Fernwood; Santa Monica Mountains from Monte Nido to Castellammare and Old Canyon to Malibu. No exact date for flight, approximate date is based on flights with similar numbers. Overlap within flightlines is not consistent. Imagery January, 2013. Nitrate negatives scanned April 2015.

FLIGHT LOCATION



Copyright:© 2013 National Geographic Society, i-cubed

0 0.1 0.2 0.4 Miles

Index to Aerial Photography
Page 2 of 2

Scale of this index: 1:10,000