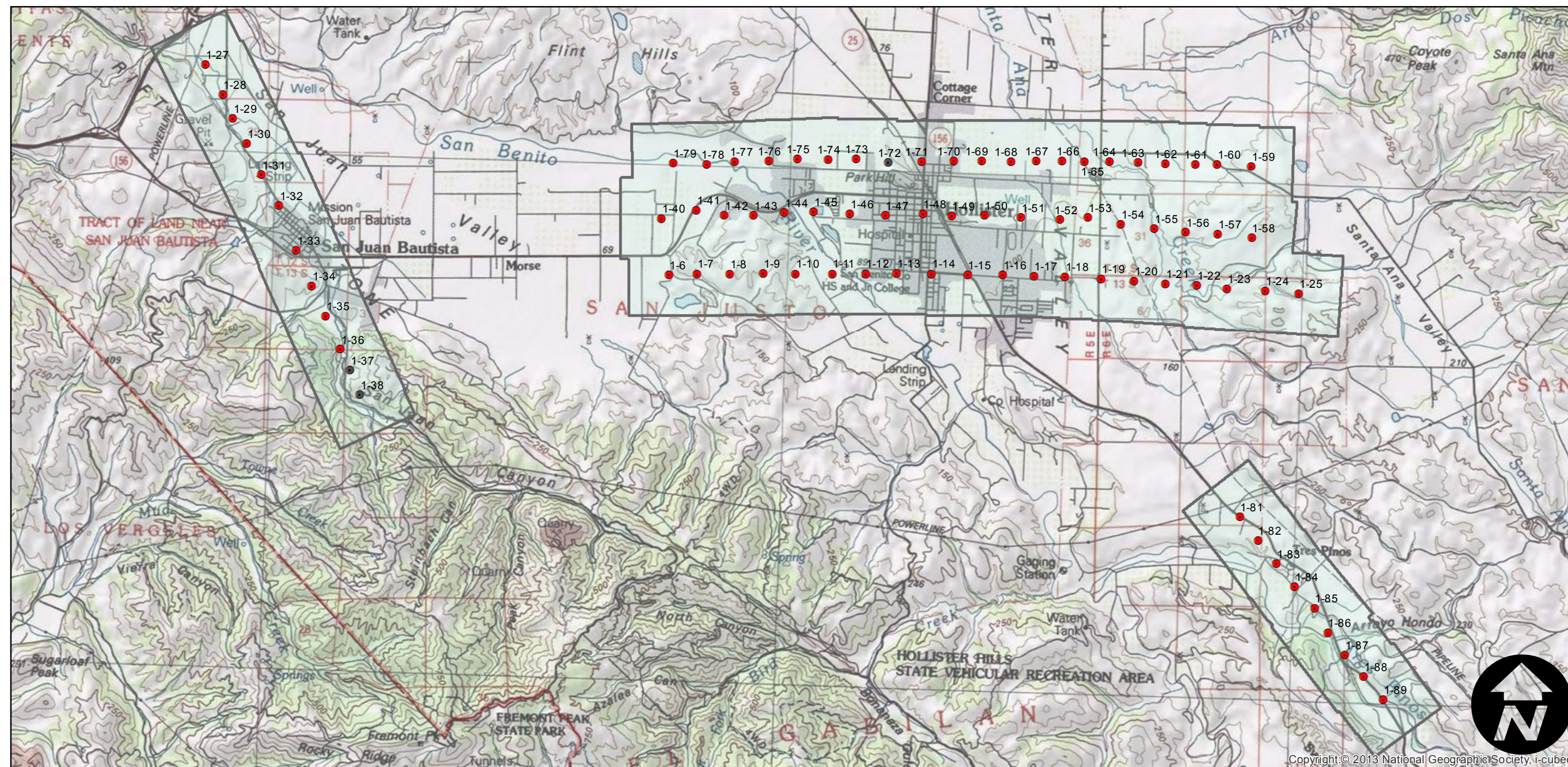


# C-11800 (1:7.2K)

Counties: San Benito  
Flight date(s): 10-25-1947 to 11-30-1947  
Scale: 1: 7,200  
Overlap: 60%

Note: Photography of entire county at scale 1:24,000; northwestern portion of county at scale 1:12,000; cities of Hollister, San Juan Bautista and Tres Pinos at scale 1:7,200. Overlap within flightlines is not consistent. Roll #1 dated 10-25-47, stored at Annex 2 due to "vinegar syndrome". Prints and copy negatives acquired from Whittier College, January 2013.

## FLIGHT LOCATION



0 1.25 2.5 5 Miles

Index to Aerial Photography  
Page 1 of 1

Scale of this index: 1:80,000



Copyright © 2013 National Geographic Society, i-cubed