

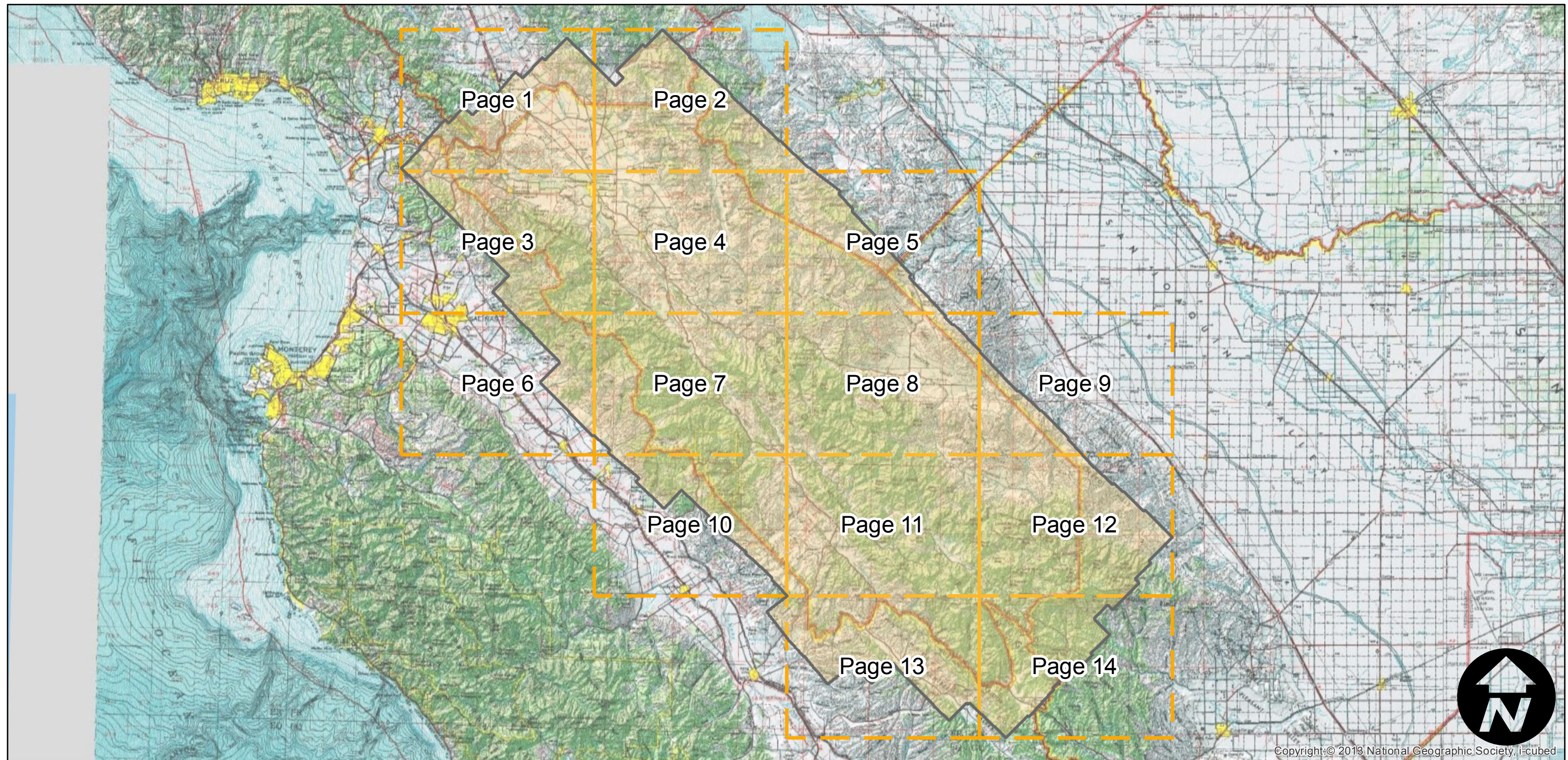
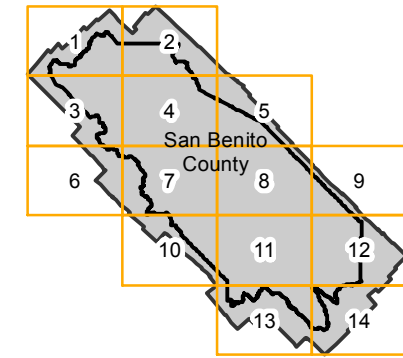
C-11800 (1:24K)

Counties: San Benito
Flight date(s): 10-25-1947 to 11-30-1947
Scale: 1: 24,000
Overlap: 60%

Complete Metadata:
<http://www.library.ucsb.edu/mil/aerial-photography-tools>

Note: Photography of entire county at scale 1:24,000; northwestern portion of county at scale 1:12,000; cities of Hollister, San Juan Bautista and Tres Pinos at scale 1:7,200. Overlap within flightlines is not consistent. Roll #1 dated 10-25-47, stored at Annex 2 due to "vinegar syndrome". Prints and copy negatives acquired from Whittier College, January 2013.

FLIGHT LOCATION



0 12.5 25 50 Miles

Index to Aerial Photography
Page Key

Scale of this index: 1:600,000



Copyright: © 2013 National Geographic Society, i-cubed

C-11800 (1:24K)

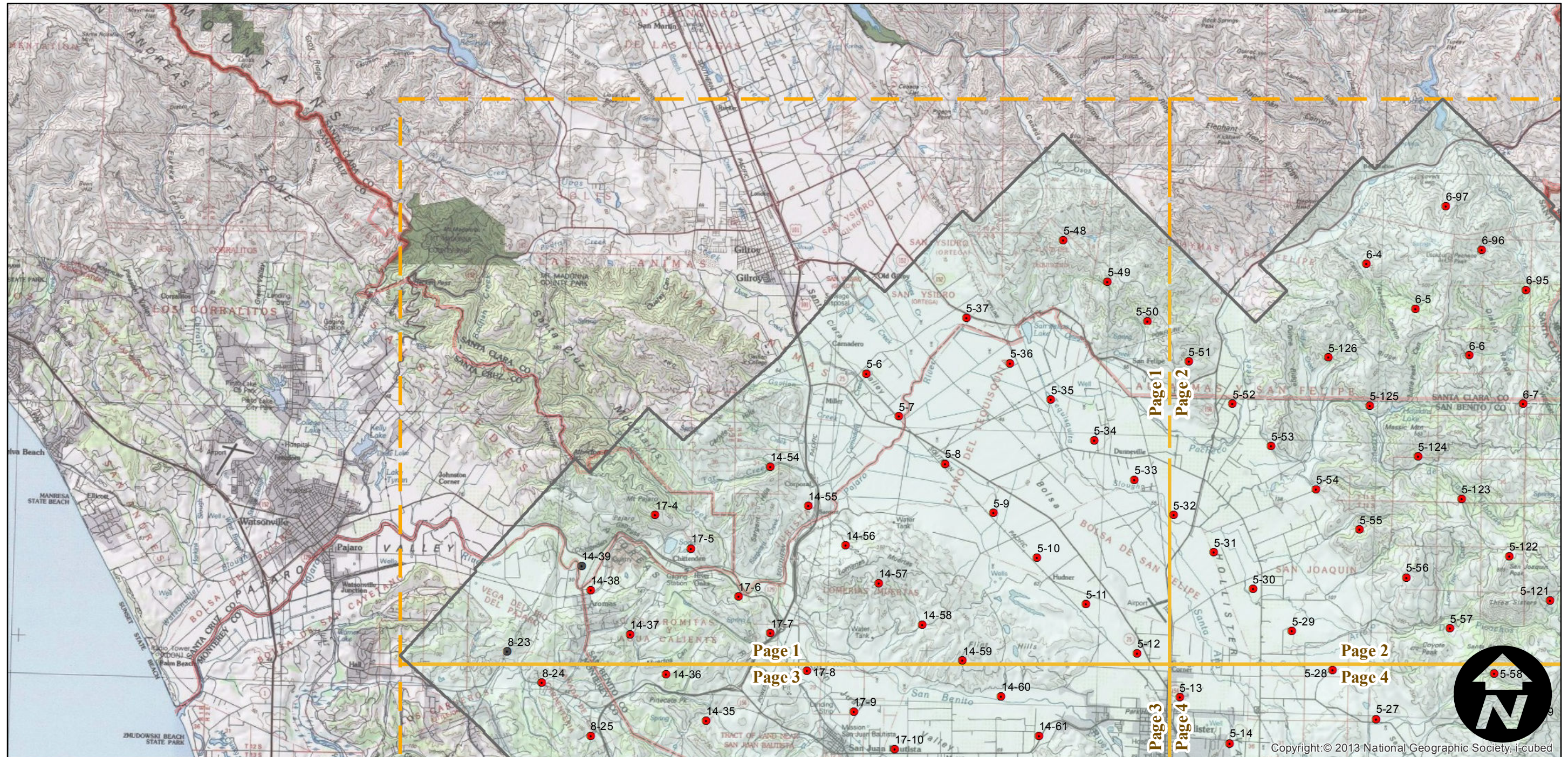
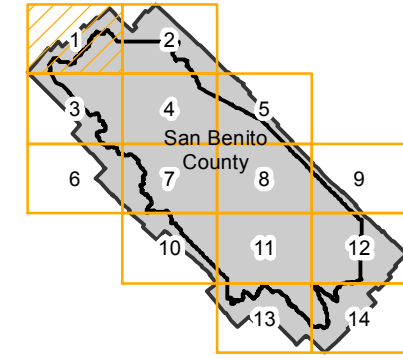
Counties: San Benito
 Flight date(s): 10-25-1947 to 11-30-1947
 Scale: 1: 24,000
 Overlap: 60%

Complete Metadata:
<http://www.library.ucsb.edu/mil/aerial-photography-tools>

Note: Photography of entire county at scale 1:24,000; northwestern portion of county at scale 1:12,000; cities of Hollister, San Juan Bautista and Tres Pinos at scale 1:7,200. Overlap within flightlines is not consistent. Roll #1 dated 10-25-47, stored at Annex 2 due to "vinegar syndrome". Prints and copy negatives acquired from Whittier College, January 2013.

- MIL owns frame
- MIL does not own frame

FLIGHT LOCATION



0 2.5 5 10 Miles

Index to Aerial Photography
 Page 1 of 14

Scale of this index: 1:150,000

Copyright: © 2013 National Geographic Society, i-cubed

C-11800 (1:24K)

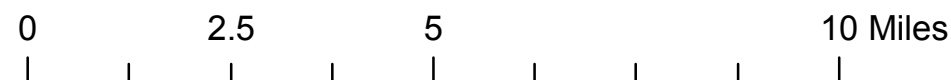
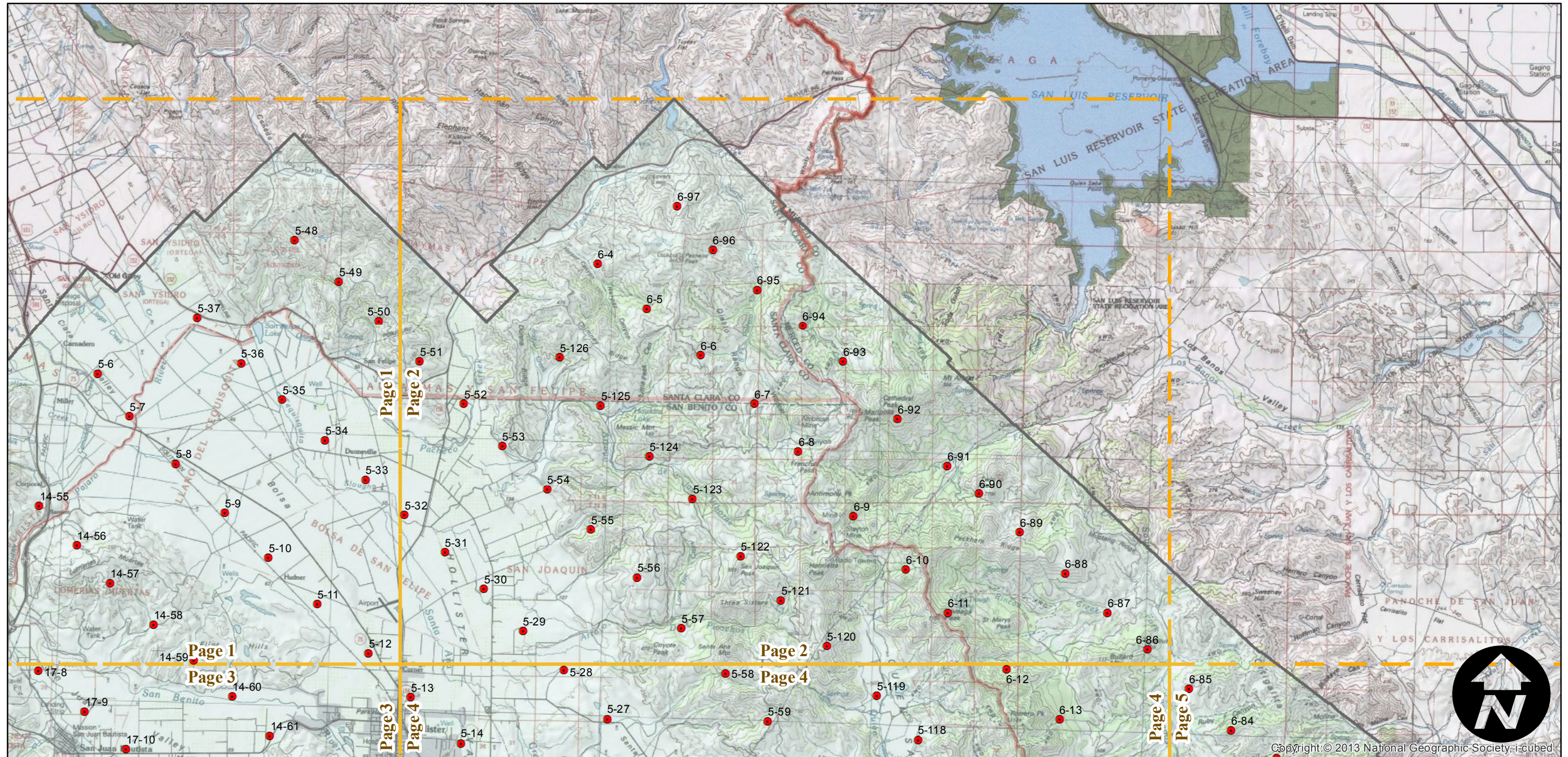
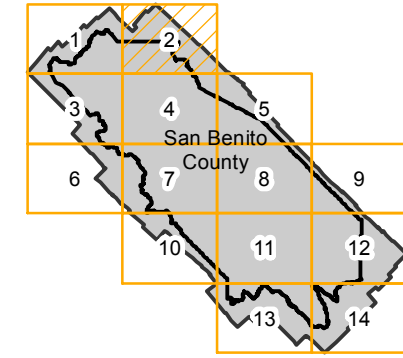
Counties: San Benito
Flight date(s): 10-25-1947 to 11-30-1947
Scale: 1: 24,000
Overlap: 60%

Complete Metadata:
<http://www.library.ucsb.edu/mil/aerial-photography-tools>

Note: Photography of entire county at scale 1:24,000; northwestern portion of county at scale 1:12,000; cities of Hollister, San Juan Bautista and Tres Pinos at scale 1:7,200. Overlap within flightlines is not consistent. Roll #1 dated 10-25-47, stored at Annex 2 due to "vinegar syndrome". Prints and copy negatives acquired from Whittier College, January 2013.

- MIL owns frame
- MIL does not own frame

FLIGHT LOCATION



C-11800 (1:24K)

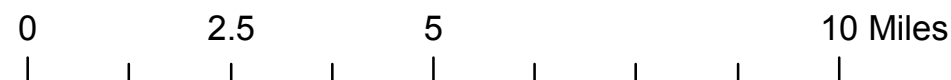
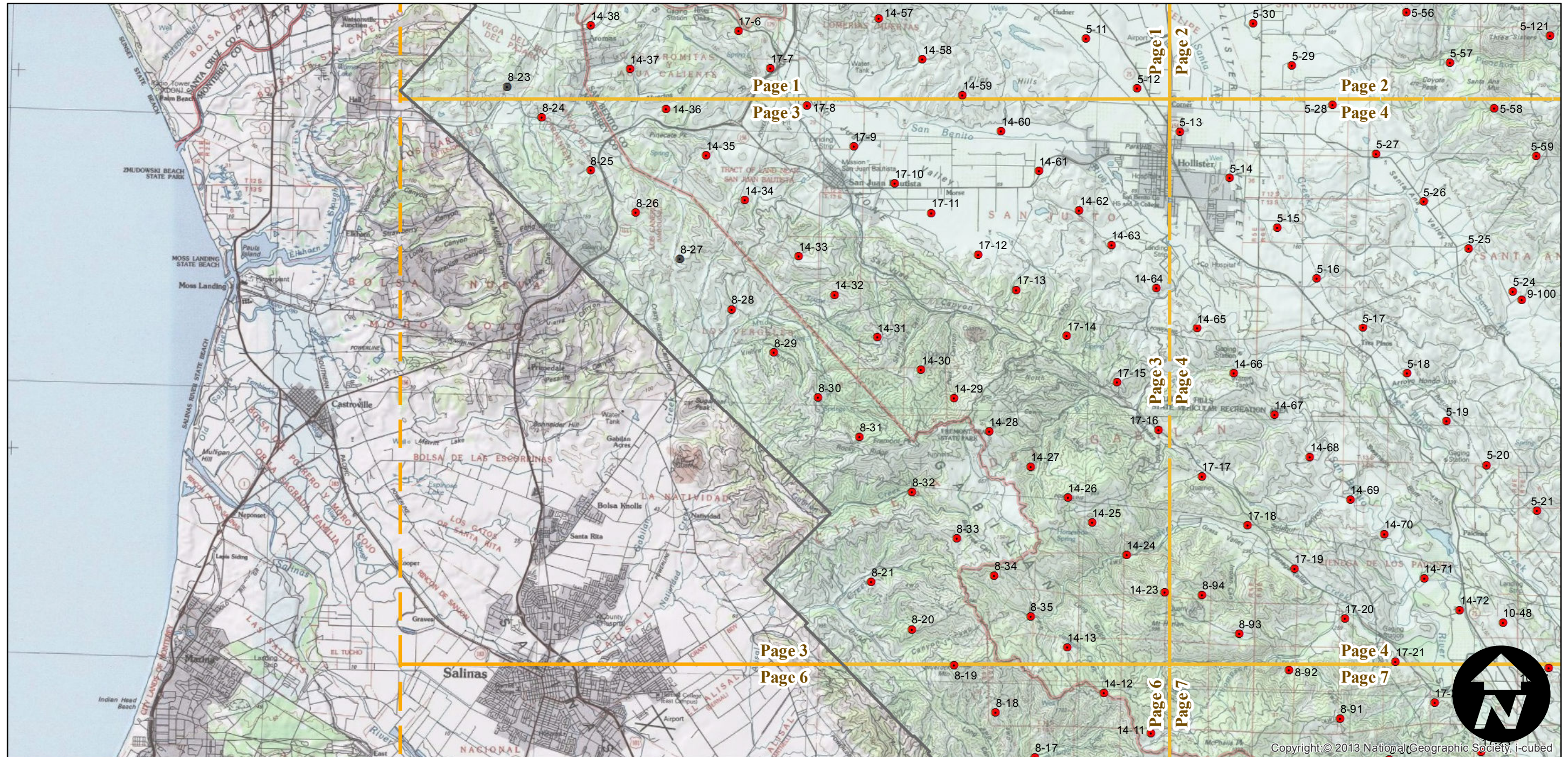
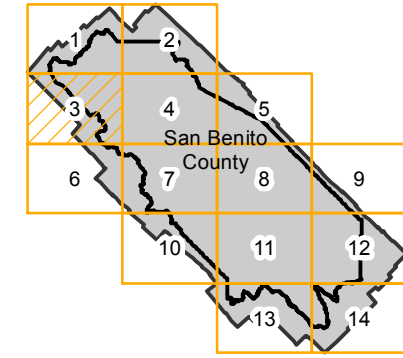
Counties: San Benito
 Flight date(s): 10-25-1947 to 11-30-1947
 Scale: 1: 24,000
 Overlap: 60%

Complete Metadata:
<http://www.library.ucsb.edu/mil/aerial-photography-tools>

Note: Photography of entire county at scale 1:24,000; northwestern portion of county at scale 1:12,000; cities of Hollister, San Juan Bautista and Tres Pinos at scale 1:7,200. Overlap within flightlines is not consistent. Roll #1 dated 10-25-47, stored at Annex 2 due to "vinegar syndrome". Prints and copy negatives acquired from Whittier College, January 2013.

- MIL owns frame
- MIL does not own frame

FLIGHT LOCATION



C-11800 (1:24K)

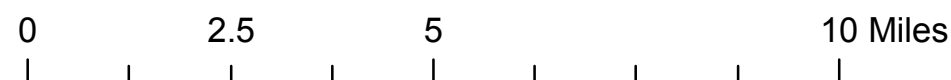
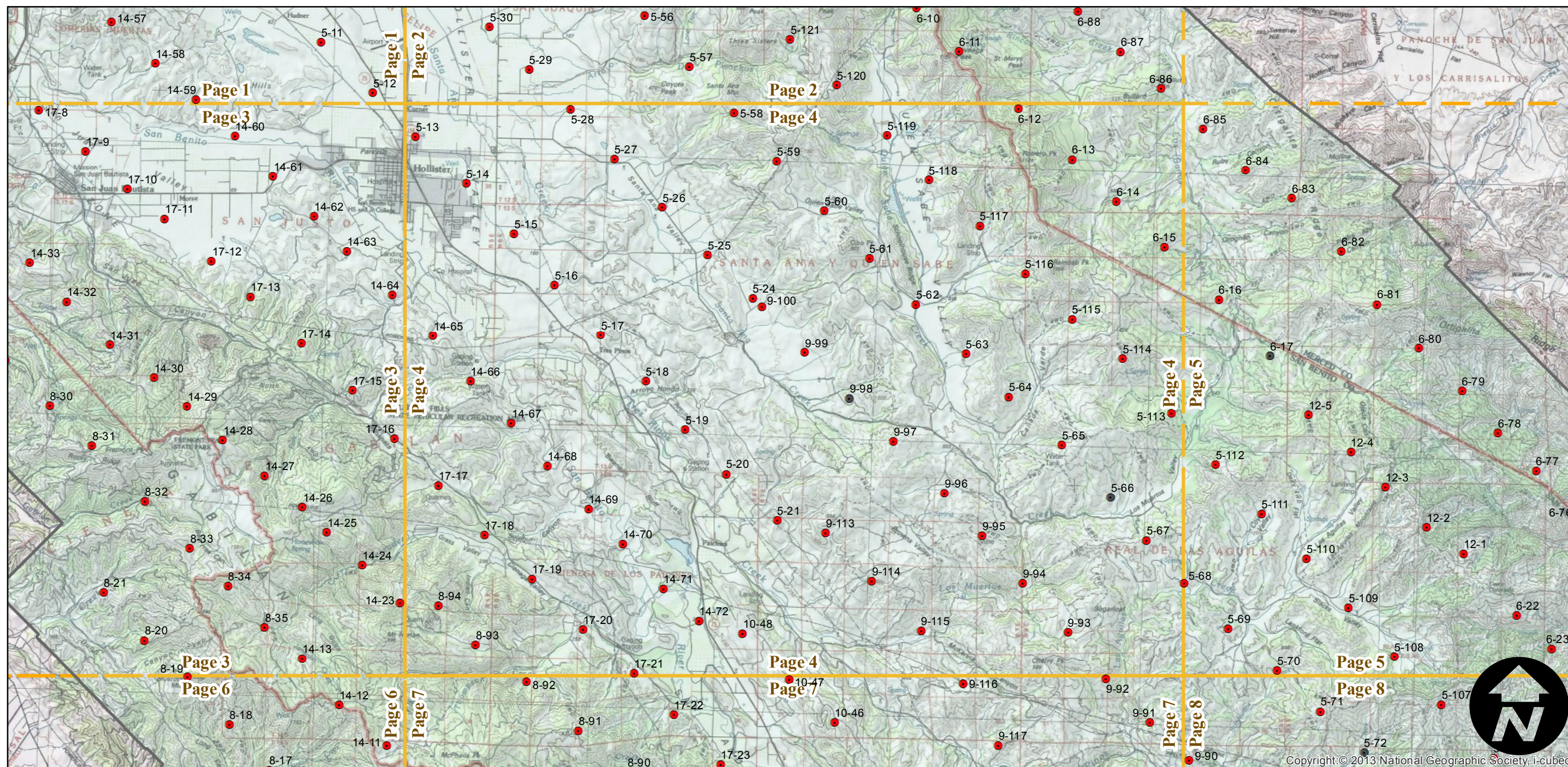
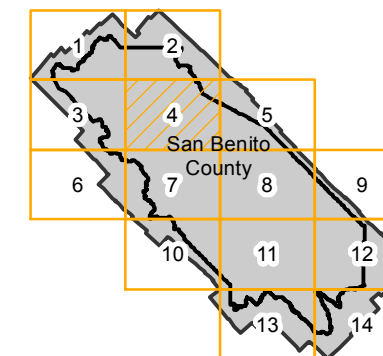
Counties: San Benito
 Flight date(s): 10-25-1947 to 11-30-1947
 Scale: 1: 24,000
 Overlap: 60%

Complete Metadata:
<http://www.library.ucsb.edu/mil/aerial-photography-tools>

Note: Photography of entire county at scale 1:24,000; northwestern portion of county at scale 1:12,000; cities of Hollister, San Juan Bautista and Tres Pinos at scale 1:7,200. Overlap within flightlines is not consistent. Roll #1 dated 10-25-47, stored at Annex 2 due to "vinegar syndrome". Prints and copy negatives acquired from Whittier College, January 2013.

- MIL owns frame
- MIL does not own frame

FLIGHT LOCATION



C-11800 (1:24K)

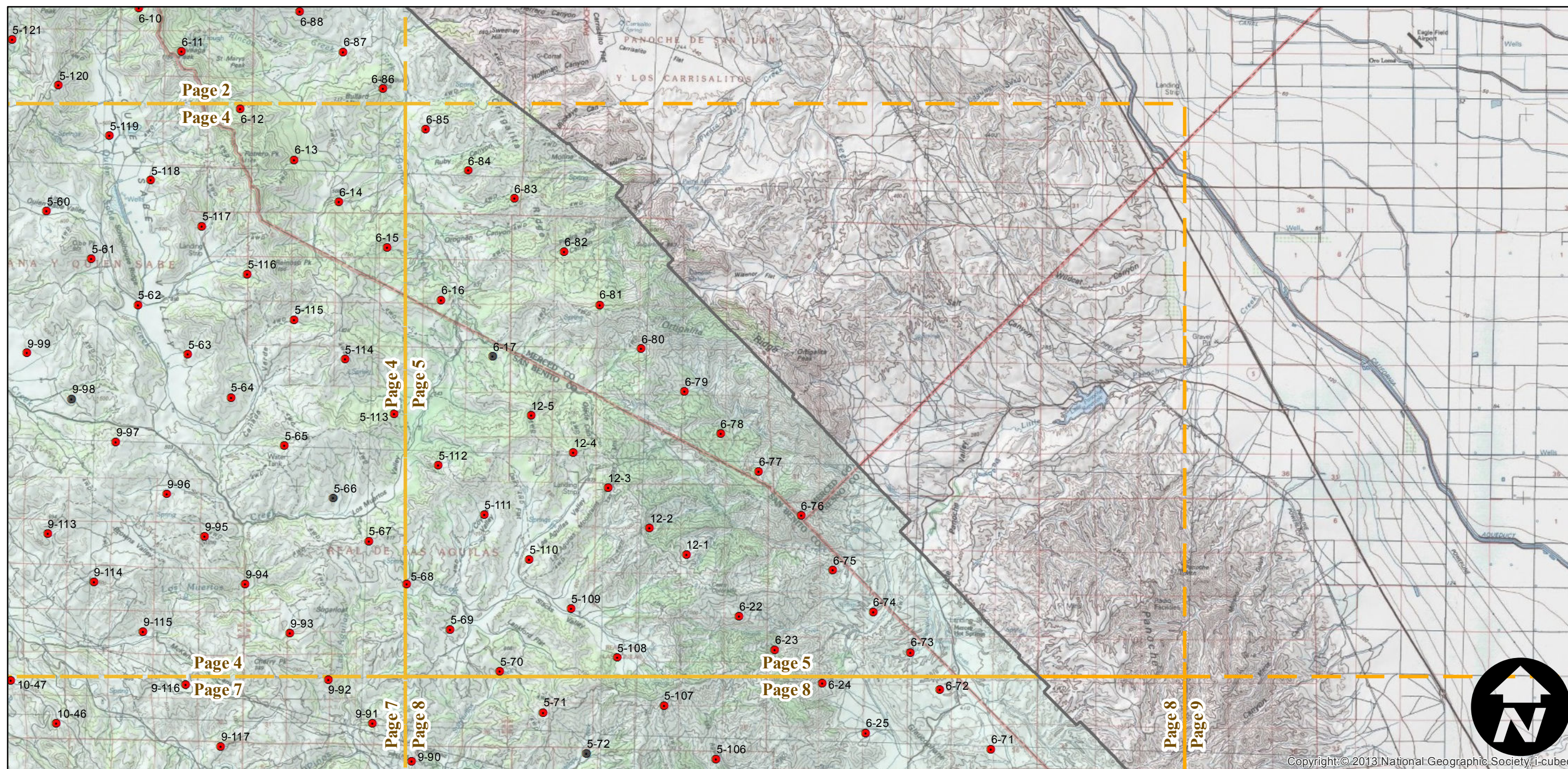
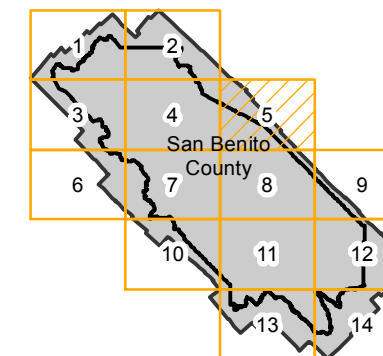
Counties: San Benito
 Flight date(s): 10-25-1947 to 11-30-1947
 Scale: 1: 24,000
 Overlap: 60%

Complete Metadata:
<http://www.library.ucsb.edu/mil/aerial-photography-tools>

Note: Photography of entire county at scale 1:24,000; northwestern portion of county at scale 1:12,000; cities of Hollister, San Juan Bautista and Tres Pinos at scale 1:7,200. Overlap within flightlines is not consistent. Roll #1 dated 10-25-47, stored at Annex 2 due to "vinegar syndrome". Prints and copy negatives acquired from Whittier College, January 2013.

- MIL owns frame
- MIL does not own frame

FLIGHT LOCATION



0 2.5 5 10 Miles

Index to Aerial Photography
 Page 5 of 14

Scale of this index: 1:150,000

Copyright: © 2013 National Geographic Society, i-cubed

C-11800 (1:24K)

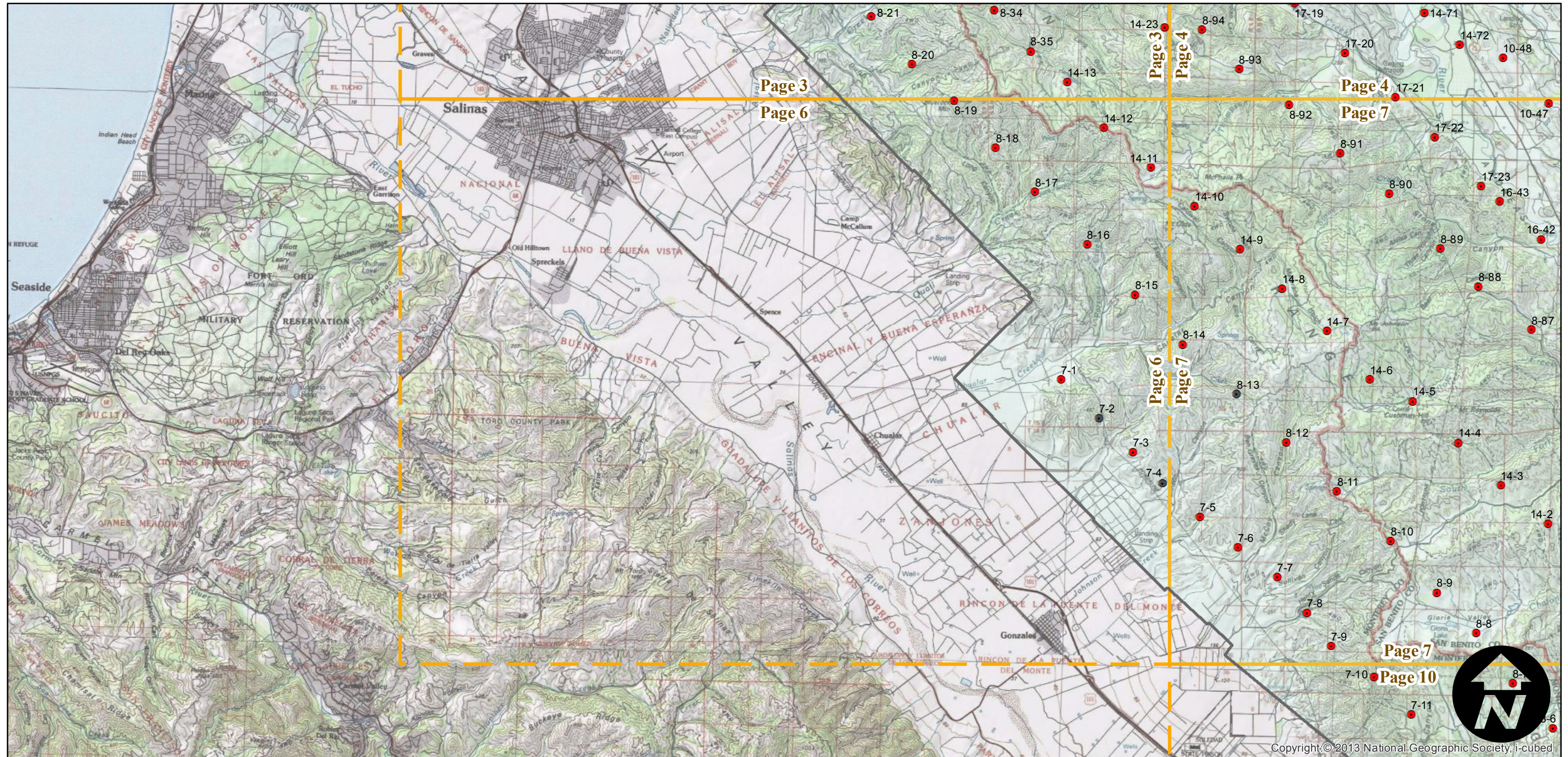
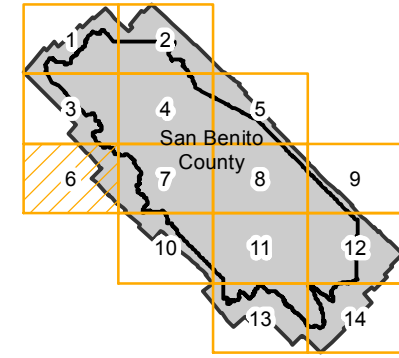
Counties: San Benito
 Flight date(s): 10-25-1947 to 11-30-1947
 Scale: 1: 24,000
 Overlap: 60%

Complete Metadata:
<http://www.library.ucsb.edu/mil/aerial-photography-tools>

Note: Photography of entire county at scale 1:24,000; northwestern portion of county at scale 1:12,000; cities of Hollister, San Juan Bautista and Tres Pinos at scale 1:7,200. Overlap within flightlines is not consistent. Roll #1 dated 10-25-47, stored at Annex 2 due to "vinegar syndrome". Prints and copy negatives acquired from Whittier College, January 2013.

- MIL owns frame
- MIL does not own frame

FLIGHT LOCATION



0 2.5 5 10 Miles

Index to Aerial Photography
 Page 6 of 14

Scale of this index: 1:150,000

Copyright © 2013 National Geographic Society, i-cubed

C-11800 (1:24K)

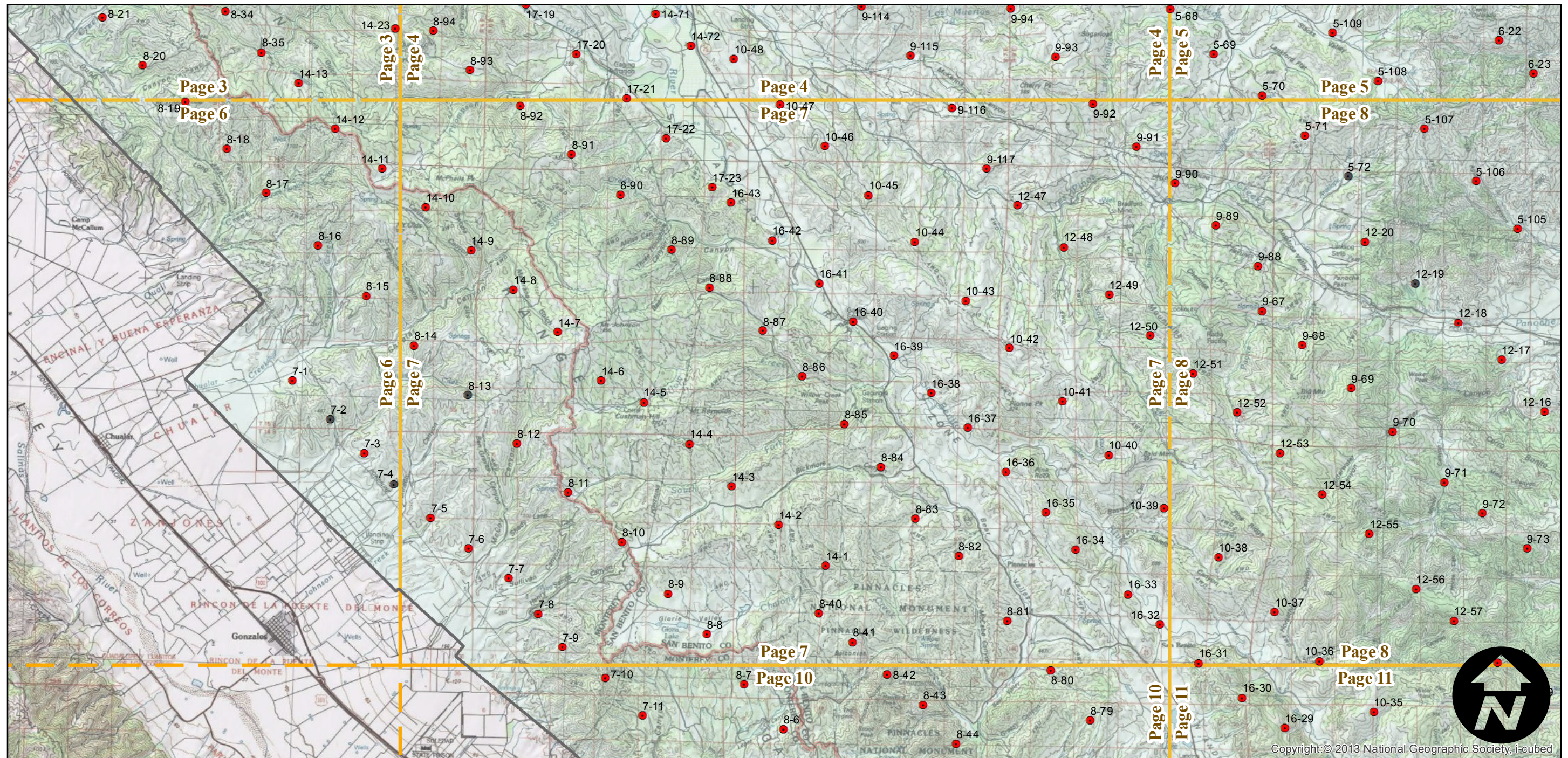
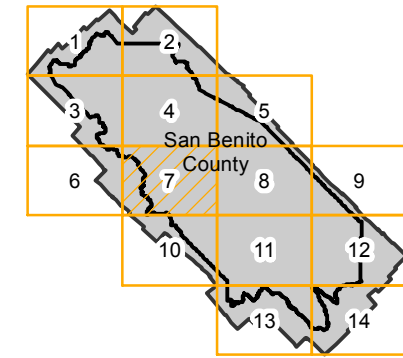
Counties: San Benito
 Flight date(s): 10-25-1947 to 11-30-1947
 Scale: 1: 24,000
 Overlap: 60%

Complete Metadata:
<http://www.library.ucsb.edu/mil/aerial-photography-tools>

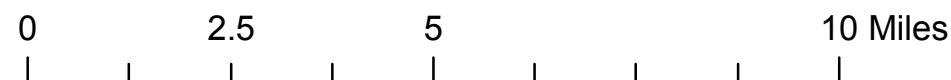
Note: Photography of entire county at scale 1:24,000; northwestern portion of county at scale 1:12,000; cities of Hollister, San Juan Bautista and Tres Pinos at scale 1:7,200. Overlap within flightlines is not consistent. Roll #1 dated 10-25-47, stored at Annex 2 due to "vinegar syndrome". Prints and copy negatives acquired from Whittier College, January 2013.

- MIL owns frame
- MIL does not own frame

FLIGHT LOCATION



Copyright © 2013 National Geographic Society, i-cubed



C-11800 (1:24K)

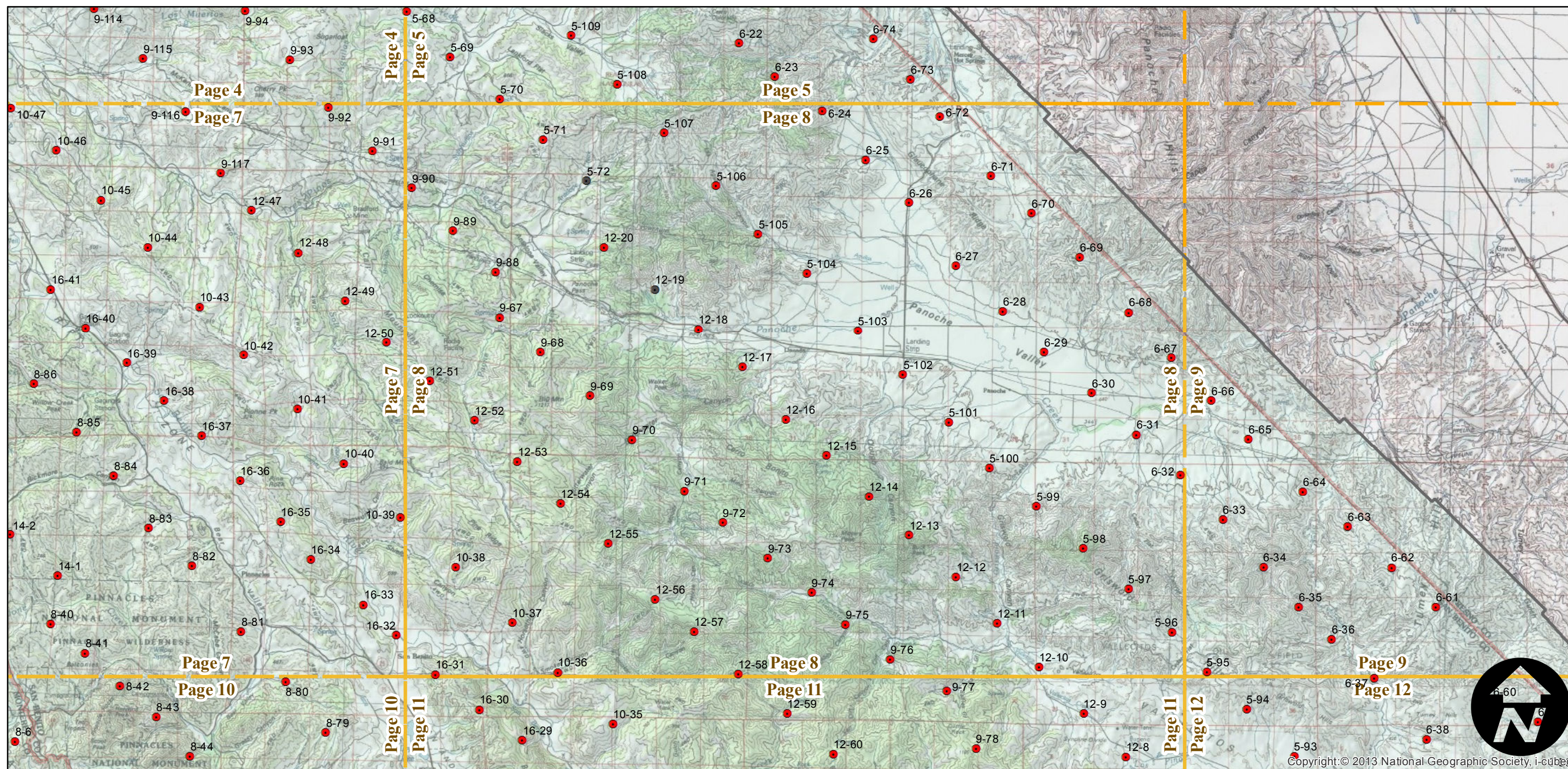
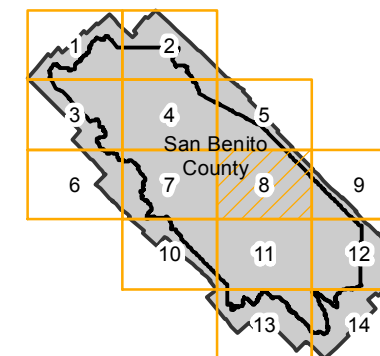
Counties: San Benito
 Flight date(s): 10-25-1947 to 11-30-1947
 Scale: 1: 24,000
 Overlap: 60%

Complete Metadata:
<http://www.library.ucsb.edu/mil/aerial-photography-tools>

Note: Photography of entire county at scale 1:24,000; northwestern portion of county at scale 1:12,000; cities of Hollister, San Juan Bautista and Tres Pinos at scale 1:7,200. Overlap within flightlines is not consistent. Roll #1 dated 10-25-47, stored at Annex 2 due to "vinegar syndrome". Prints and copy negatives acquired from Whittier College, January 2013.

- MIL owns frame
- MIL does not own frame

FLIGHT LOCATION



Copyright: © 2013 National Geographic Society, i-cubed

0 2.5 5 10 Miles

Index to Aerial Photography
 Page 8 of 14

Scale of this index: 1:150,000

C-11800 (1:24K)

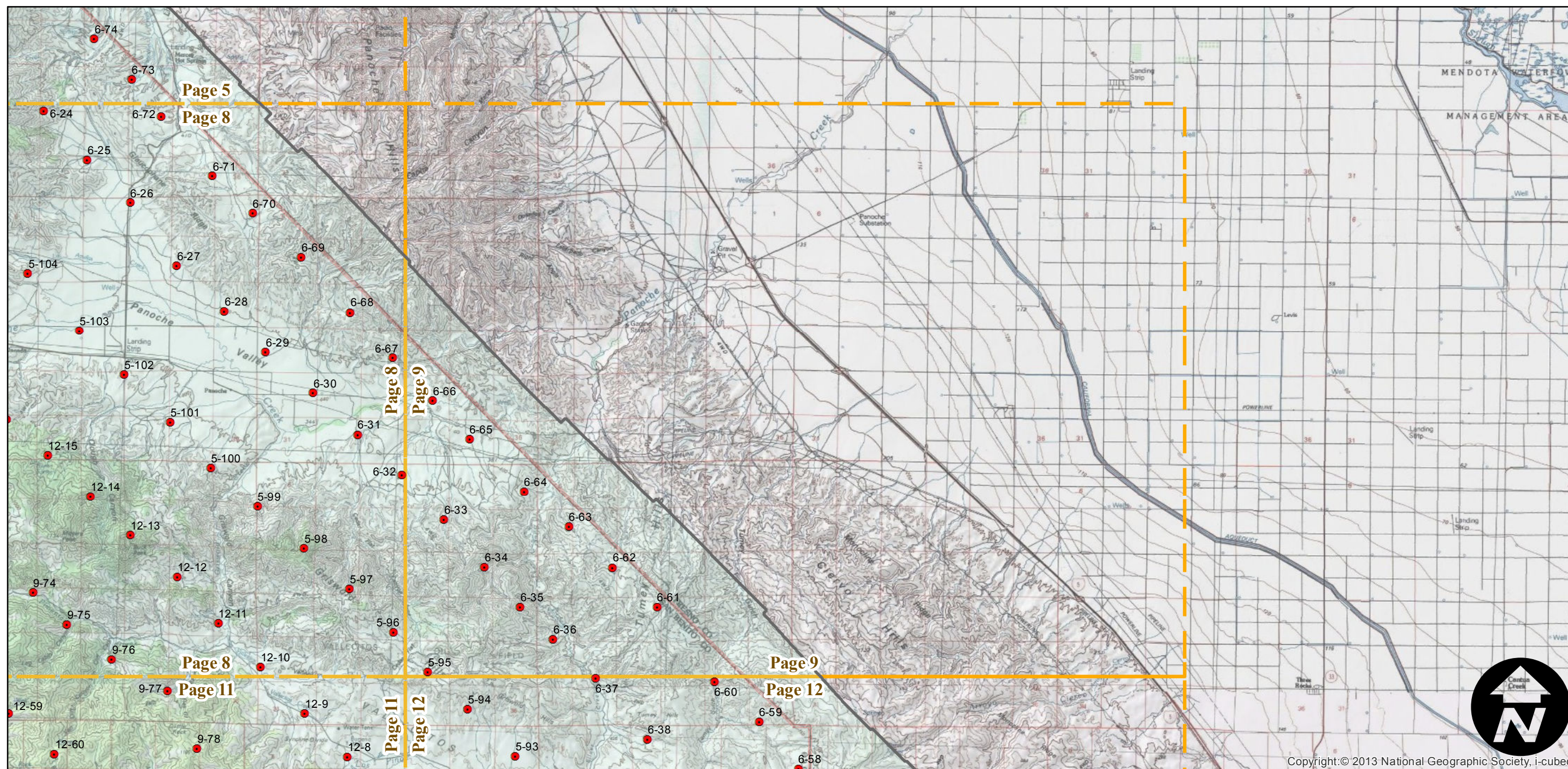
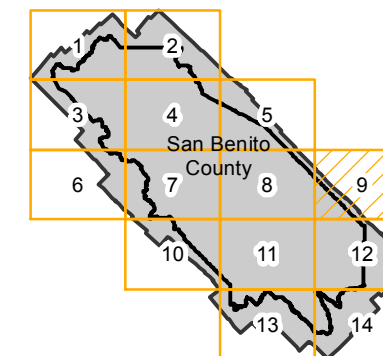
Counties: San Benito
Flight date(s): 10-25-1947 to 11-30-1947
Scale: 1: 24,000
Overlap: 60%

Complete Metadata:
<http://www.library.ucsb.edu/mil/aerial-photography-tools>

Note: Photography of entire county at scale 1:24,000; northwestern portion of county at scale 1:12,000; cities of Hollister, San Juan Bautista and Tres Pinos at scale 1:7,200. Overlap within flightlines is not consistent. Roll #1 dated 10-25-47, stored at Annex 2 due to "vinegar syndrome". Prints and copy negatives acquired from Whittier College, January 2013.

- MIL owns frame
- MIL does not own frame

FLIGHT LOCATION



Copyright:© 2013 National Geographic Society, i-cubed

0 2.5 5 10 Miles

Index to Aerial Photography
Page 9 of 14

Scale of this index: 1:150,000

C-11800 (1:24K)

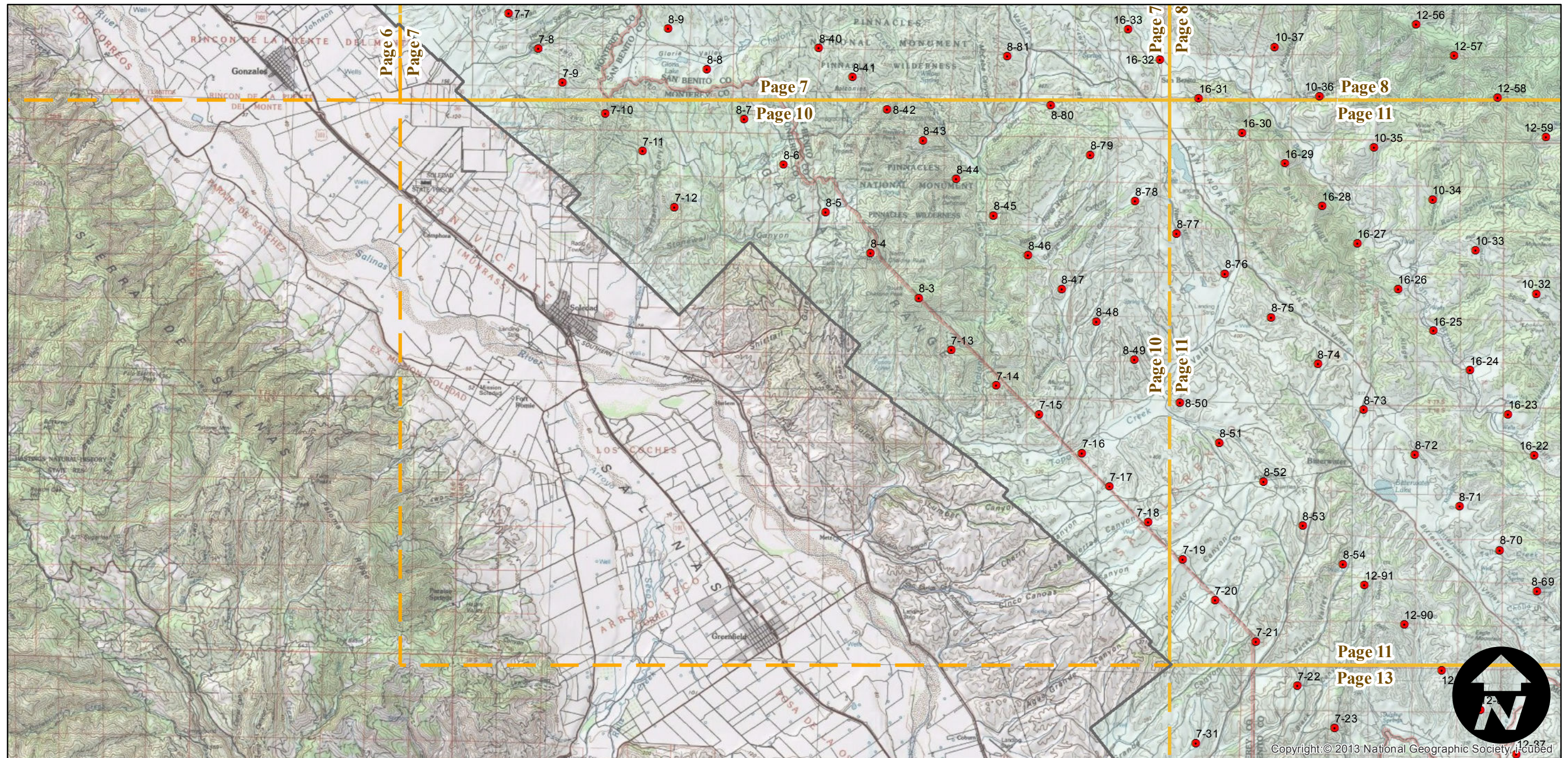
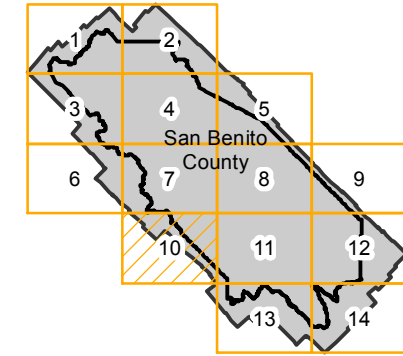
Counties: San Benito
 Flight date(s): 10-25-1947 to 11-30-1947
 Scale: 1: 24,000
 Overlap: 60%

Complete Metadata:
<http://www.library.ucsb.edu/mil/aerial-photography-tools>

Note: Photography of entire county at scale 1:24,000; northwestern portion of county at scale 1:12,000; cities of Hollister, San Juan Bautista and Tres Pinos at scale 1:7,200. Overlap within flightlines is not consistent. Roll #1 dated 10-25-47, stored at Annex 2 due to "vinegar syndrome". Prints and copy negatives acquired from Whittier College, January 2013.

- MIL owns frame
- MIL does not own frame

FLIGHT LOCATION



0 2.5 5 10 Miles

Index to Aerial Photography
 Page 10 of 14

Scale of this index: 1:150,000

Copyright © 2013 National Geographic Society

C-11800 (1:24K)

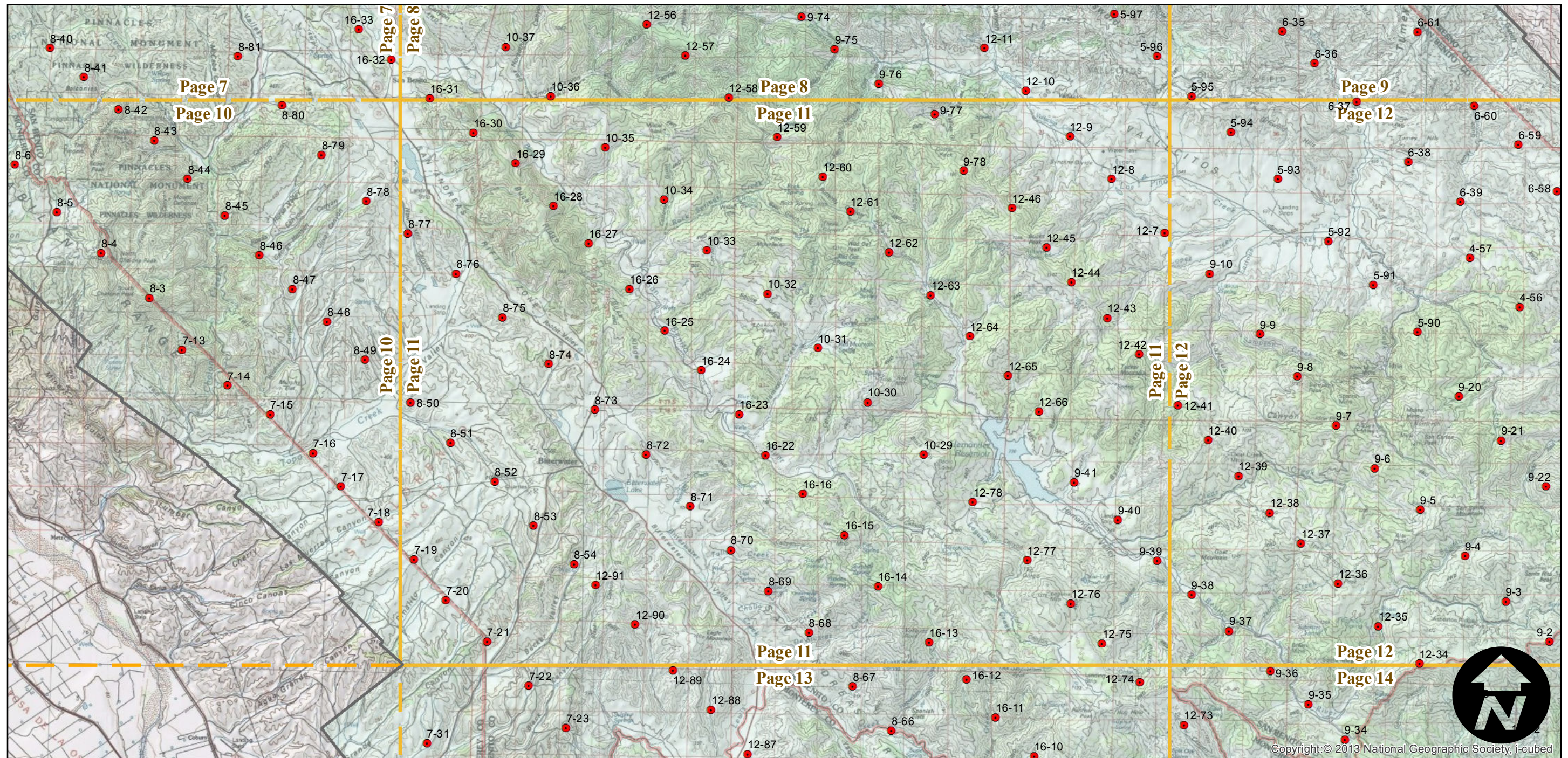
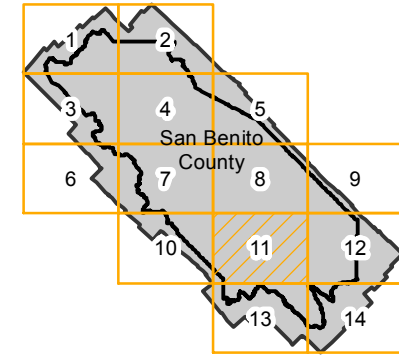
Counties: San Benito
 Flight date(s): 10-25-1947 to 11-30-1947
 Scale: 1: 24,000
 Overlap: 60%

Complete Metadata:
<http://www.library.ucsb.edu/mil/aerial-photography-tools>

Note: Photography of entire county at scale 1:24,000; northwestern portion of county at scale 1:12,000; cities of Hollister, San Juan Bautista and Tres Pinos at scale 1:7,200. Overlap within flightlines is not consistent. Roll #1 dated 10-25-47, stored at Annex 2 due to "vinegar syndrome". Prints and copy negatives acquired from Whittier College, January 2013.

- MIL owns frame
- MIL does not own frame

FLIGHT LOCATION



C-11800 (1:24K)

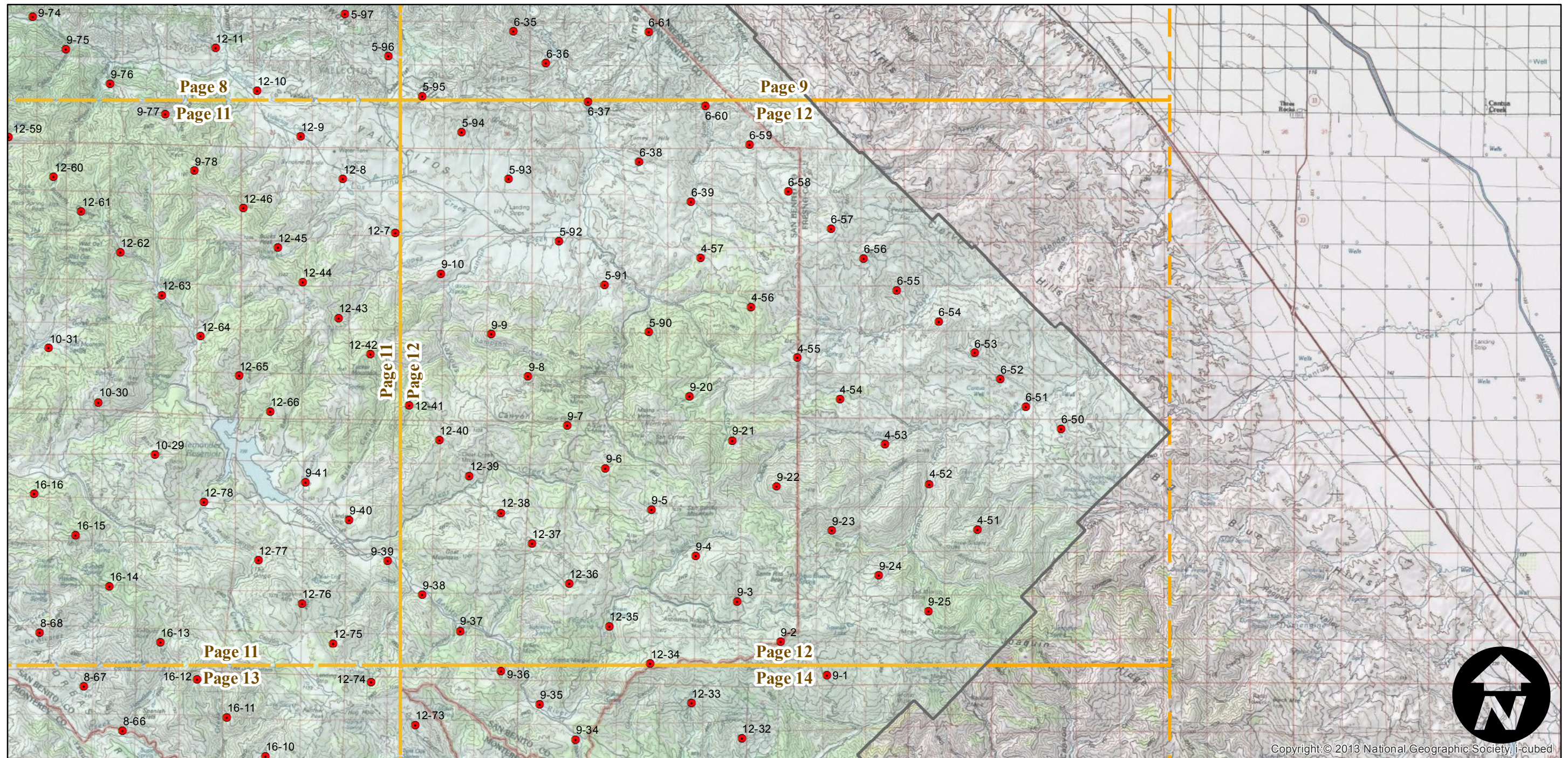
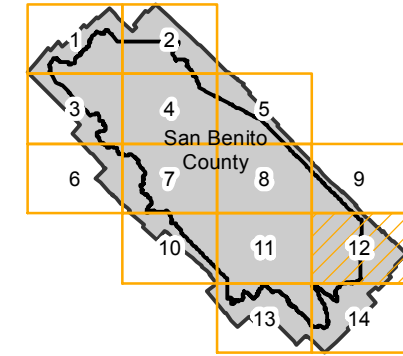
Counties: San Benito
 Flight date(s): 10-25-1947 to 11-30-1947
 Scale: 1: 24,000
 Overlap: 60%

Complete Metadata:
<http://www.library.ucsb.edu/mil/aerial-photography-tools>

Note: Photography of entire county at scale 1:24,000; northwestern portion of county at scale 1:12,000; cities of Hollister, San Juan Bautista and Tres Pinos at scale 1:7,200. Overlap within flightlines is not consistent. Roll #1 dated 10-25-47, stored at Annex 2 due to "vinegar syndrome". Prints and copy negatives acquired from Whittier College, January 2013.

- MIL owns frame
- MIL does not own frame

FLIGHT LOCATION



Copyright © 2013 National Geographic Society, i-cubed



C-11800 (1:24K)

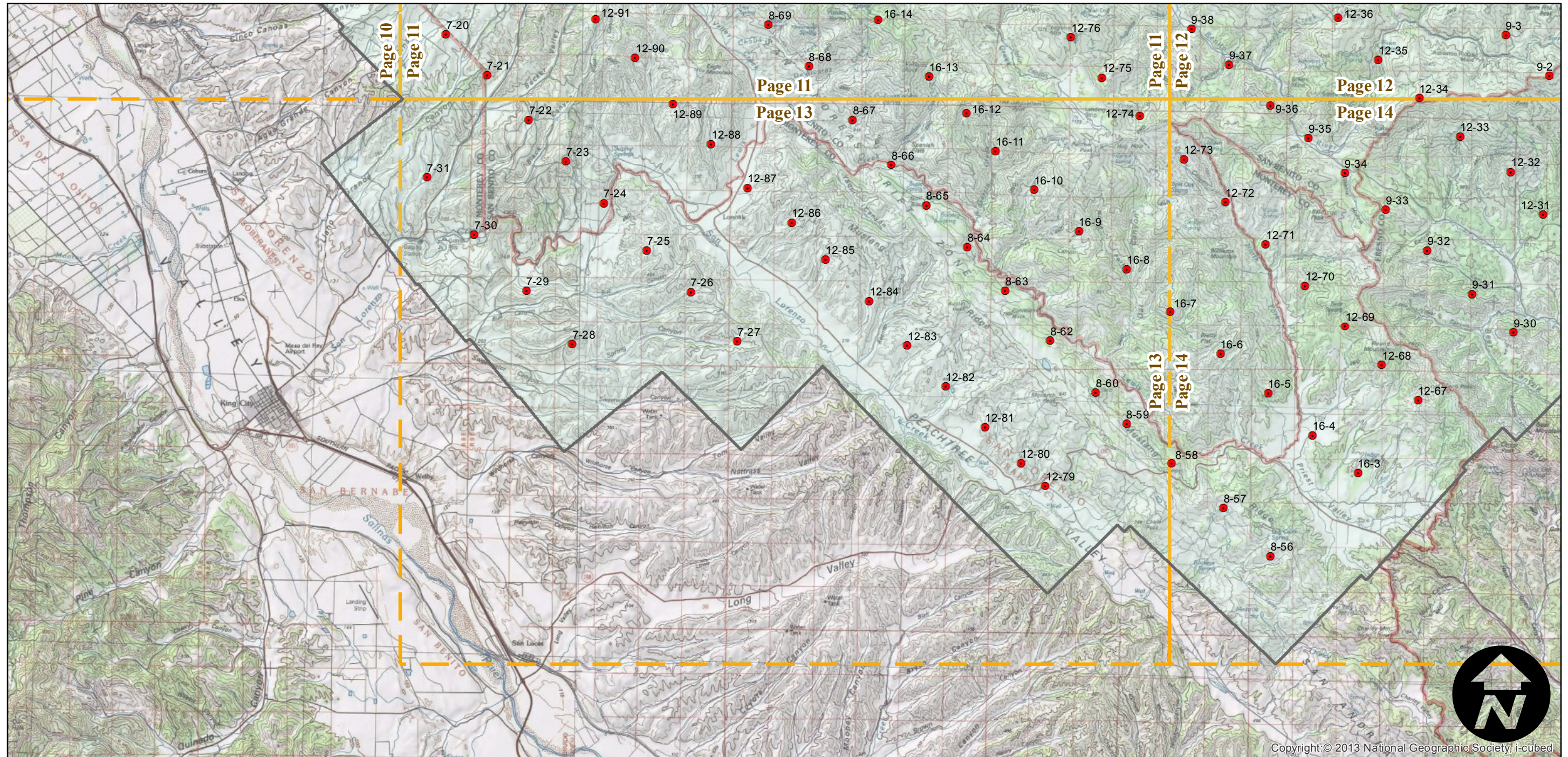
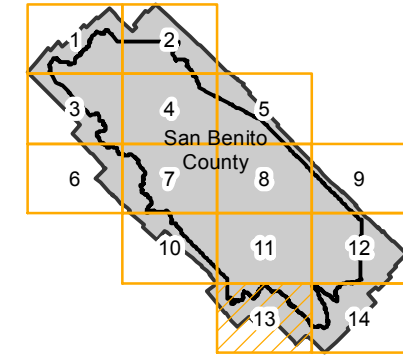
Counties: San Benito
Flight date(s): 10-25-1947 to 11-30-1947
Scale: 1: 24,000
Overlap: 60%

Complete Metadata:
<http://www.library.ucsb.edu/mil/aerial-photography-tools>

Note: Photography of entire county at scale 1:24,000; northwestern portion of county at scale 1:12,000; cities of Hollister, San Juan Bautista and Tres Pinos at scale 1:7,200. Overlap within flightlines is not consistent. Roll #1 dated 10-25-47, stored at Annex 2 due to "vinegar syndrome". Prints and copy negatives acquired from Whittier College, January 2013.

- MIL owns frame
- MIL does not own frame

FLIGHT LOCATION



0 2.5 5 10 Miles

Index to Aerial Photography
Page 13 of 14

Scale of this index: 1:150,000

Copyright © 2013 National Geographic Society, i-cubed

C-11800 (1:24K)

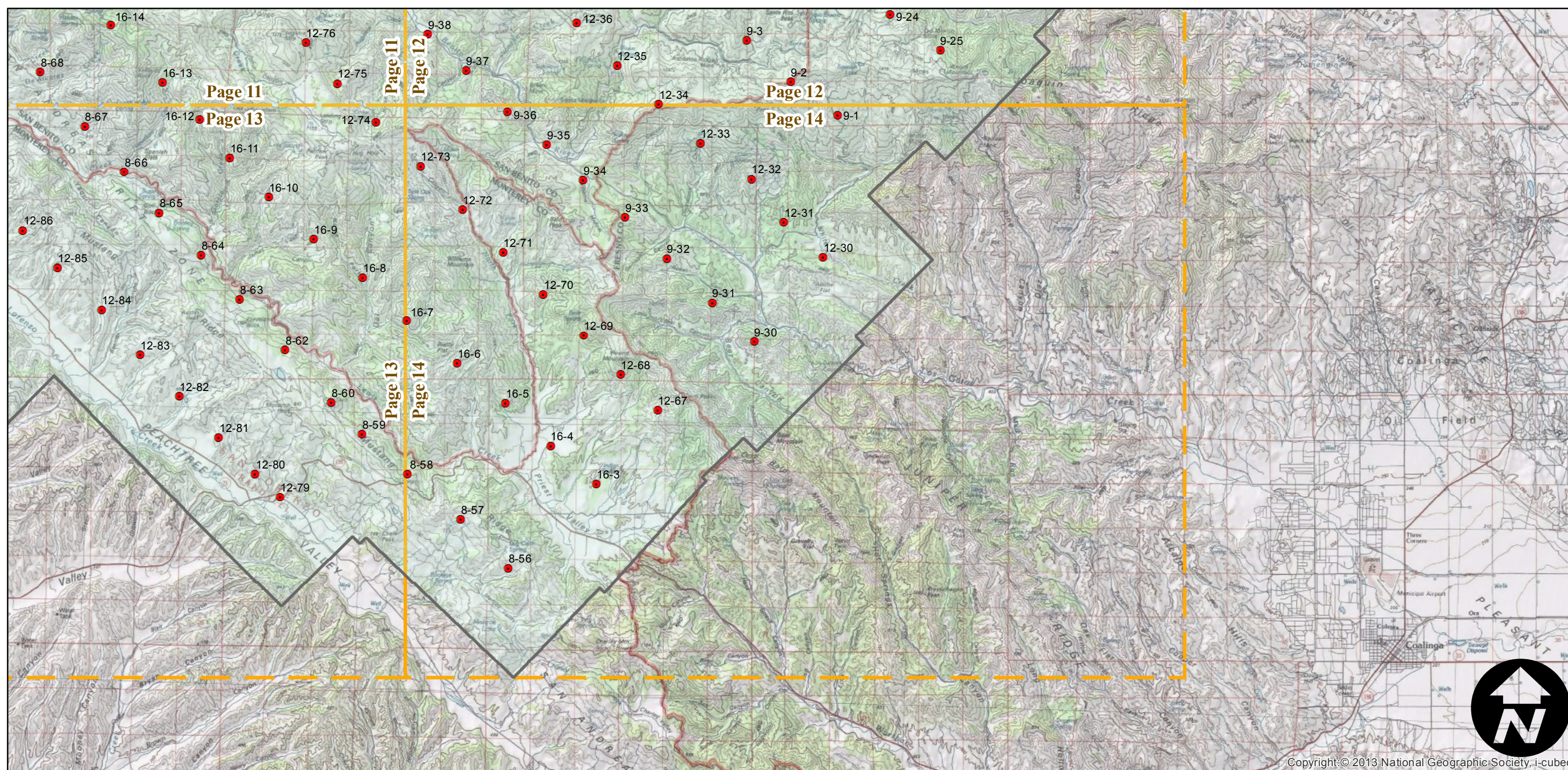
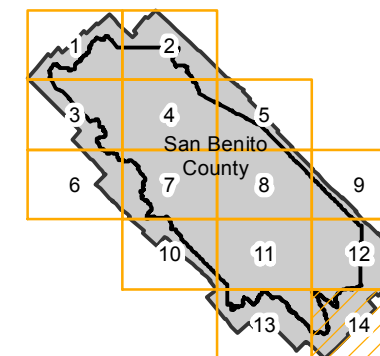
Counties: San Benito
 Flight date(s): 10-25-1947 to 11-30-1947
 Scale: 1: 24,000
 Overlap: 60%

Complete Metadata:
<http://www.library.ucsb.edu/mil/aerial-photography-tools>

Note: Photography of entire county at scale 1:24,000; northwestern portion of county at scale 1:12,000; cities of Hollister, San Juan Bautista and Tres Pinos at scale 1:7,200. Overlap within flightlines is not consistent. Roll #1 dated 10-25-47, stored at Annex 2 due to "vinegar syndrome". Prints and copy negatives acquired from Whittier College, January 2013.

- MIL owns frame
- MIL does not own frame

FLIGHT LOCATION



Copyright © 2013 National Geographic Society, i-cubed

0 2.5 5 10 Miles

Index to Aerial Photography
 Page 14 of 14

Scale of this index: 1:150,000