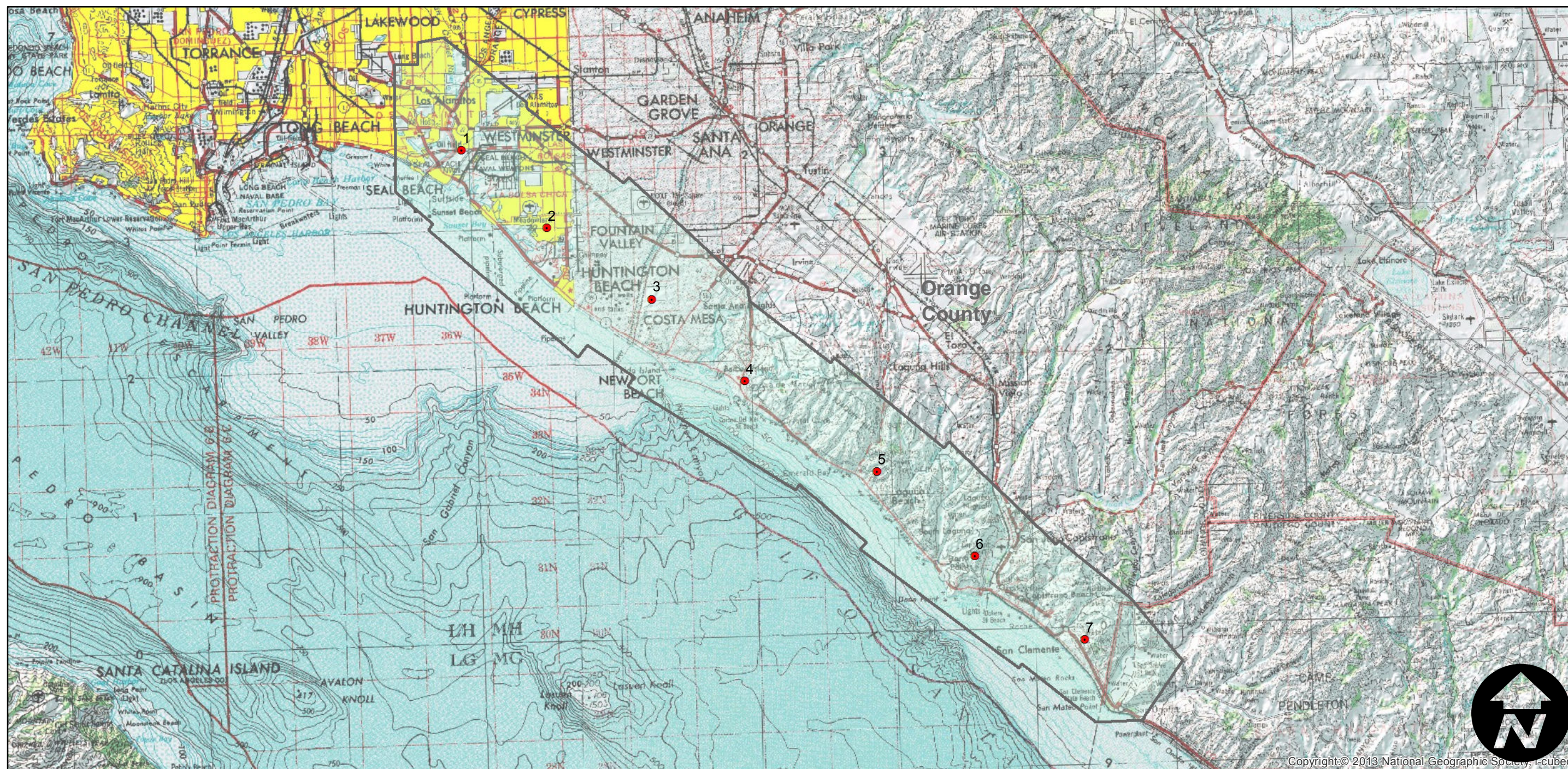
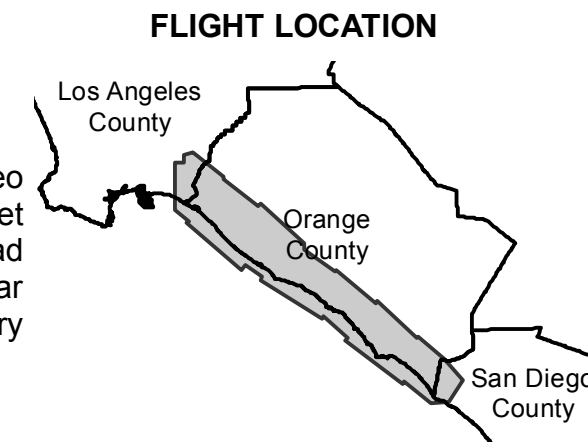


# C-11730 (Coastal Areas)

Counties: Los Angeles, Orange, San Diego  
Flight date(s): 08-01-1947 to 10-31-1947  
Scale: 1: 24,000  
Overlap: 10%

Complete Metadata:  
<http://www.library.ucsb.edu/mil/aerial-photography-tools>

Note: Original 9 X 9-inch negatives are 1:14,400 and provide partial stereo coverage. Oversized pictorial imagery shown on mosaic atlas sheet (1:14,400); coastal areas (1:24,000); 7.5' quad sheets (1:31,680); 15' quad sheets (1:63,360). Index sheets for pictorial mosaic series filed in regular index collection. See original flight indexes for more information. Imagery acquired from Whittier College, January 2013



0 5 10 20 Miles

Index to Aerial Photography  
Page 1 of 1

Scale of this index: 1:300,000