

# C-11730 (1:7.2K)

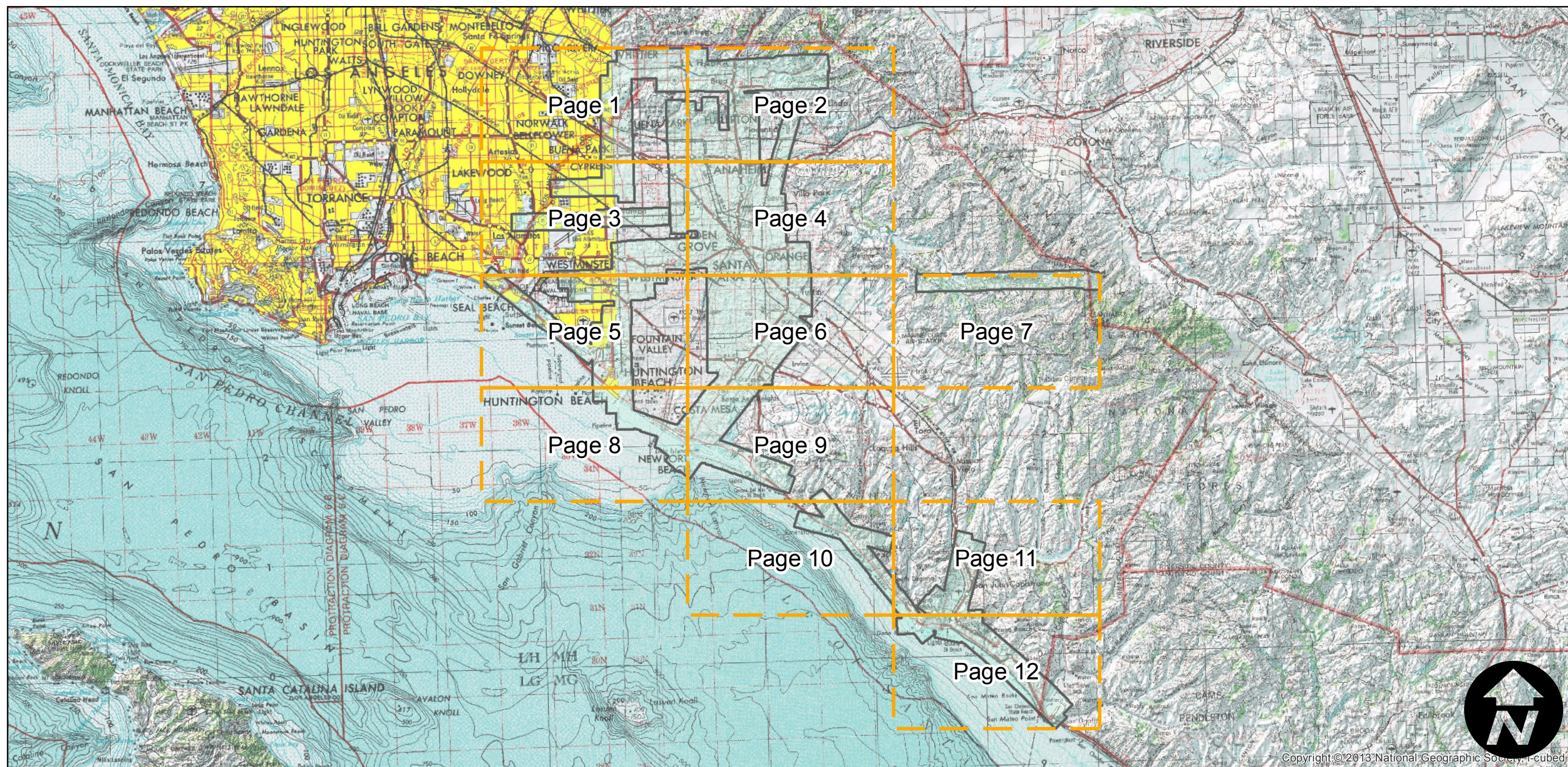
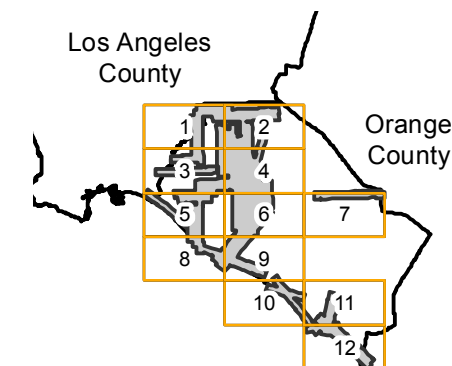
Counties: Orange, Los Angeles  
 Flight date(s): 08-01-1947 to 10-31-1947  
 Scale: 1: 7,200  
 Overlap: 60%

Complete Metadata:  
<http://www.library.ucsb.edu/mil/aerial-photography-tools>

Note: Original 9 X 9-inch negatives are 1:14,400 and provide partial stereo coverage. Oversized pictorial imagery shown on mosaic atlas sheet (1:14,400); coastal areas (1:24,000); 7.5' quad sheets (1:31,680); 15' quad sheets (1:63,360). Index sheets for pictorial mosaic series filed in regular index collection. See original flight indexes for more information. Imagery acquired from Whittier College, January 2013.

- MIL owns frame
- MIL does not own frame

## FLIGHT LOCATION



Index to Aerial Photography  
 Page Key

Scale of this index: 1:375,000



Copyright © 2013 National Geographic Society, I-cubed

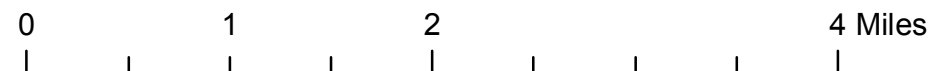
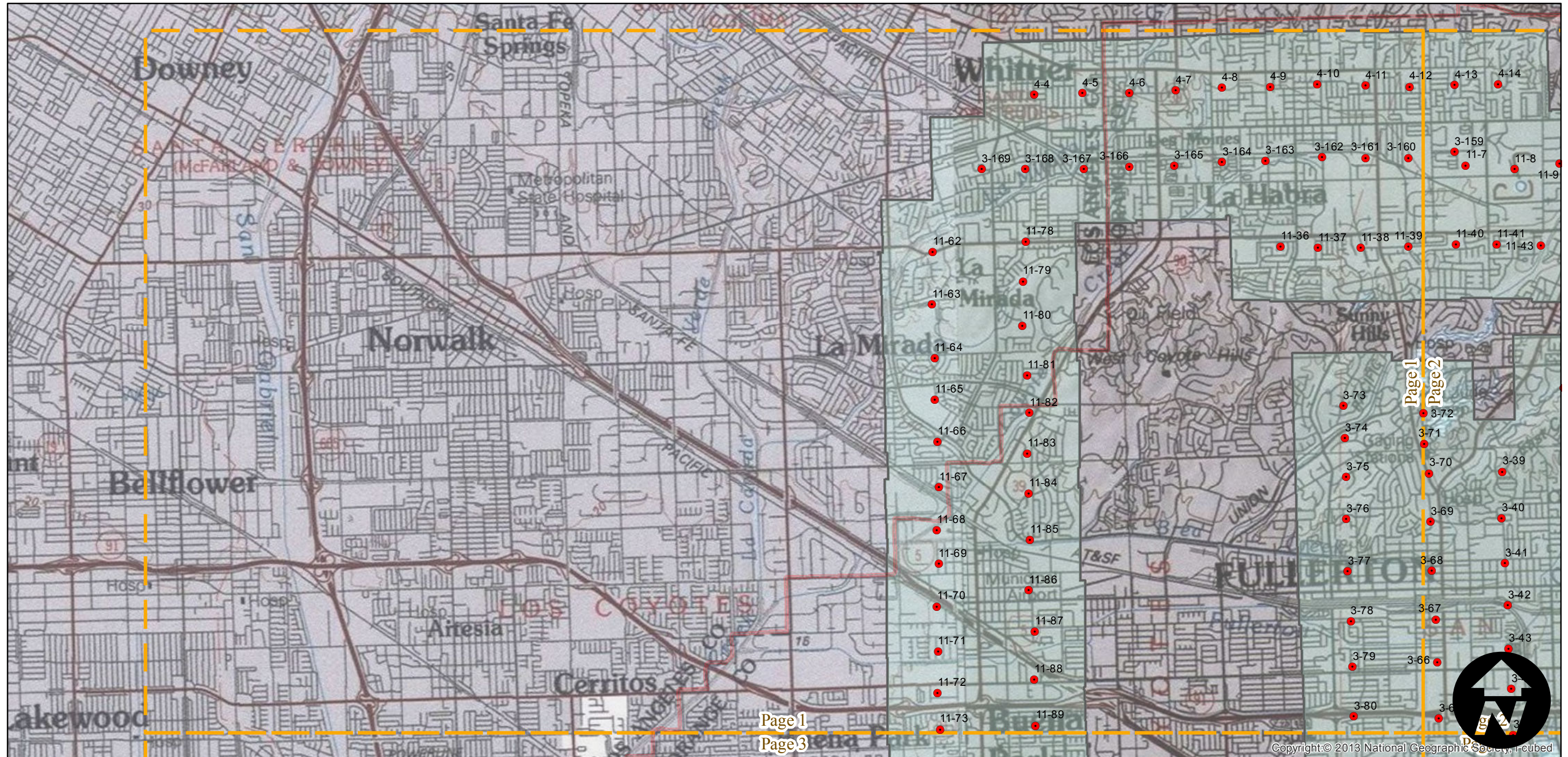
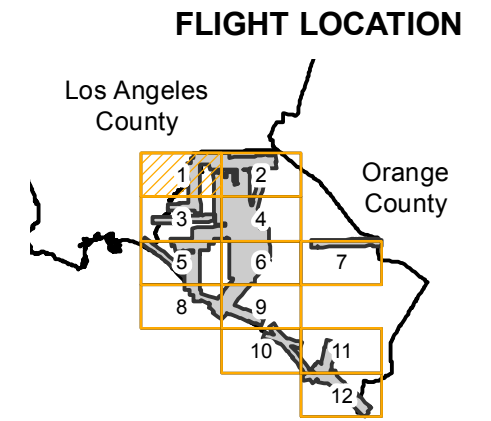
# C-11730 (1:7.2K)

Counties: Orange, Los Angeles  
 Flight date(s): 08-01-1947 to 10-31-1947  
 Scale: 1: 7,200  
 Overlap: 60%

Complete Metadata:  
<http://www.library.ucsb.edu/mil/aerial-photography-tools>

Note: Original 9 X 9-inch negatives are 1:14,400 and provide partial stereo coverage. Oversized pictorial imagery shown on mosaic atlas sheet (1:14,400); coastal areas (1:24,000); 7.5' quad sheets (1:31,680); 15' quad sheets (1:63,360). Index sheets for pictorial mosaic series filed in regular index collection. See original flight indexes for more information. Imagery acquired from Whittier College, January 2013.

- MIL owns frame
- MIL does not own frame



# C-11730 (1:7.2K)

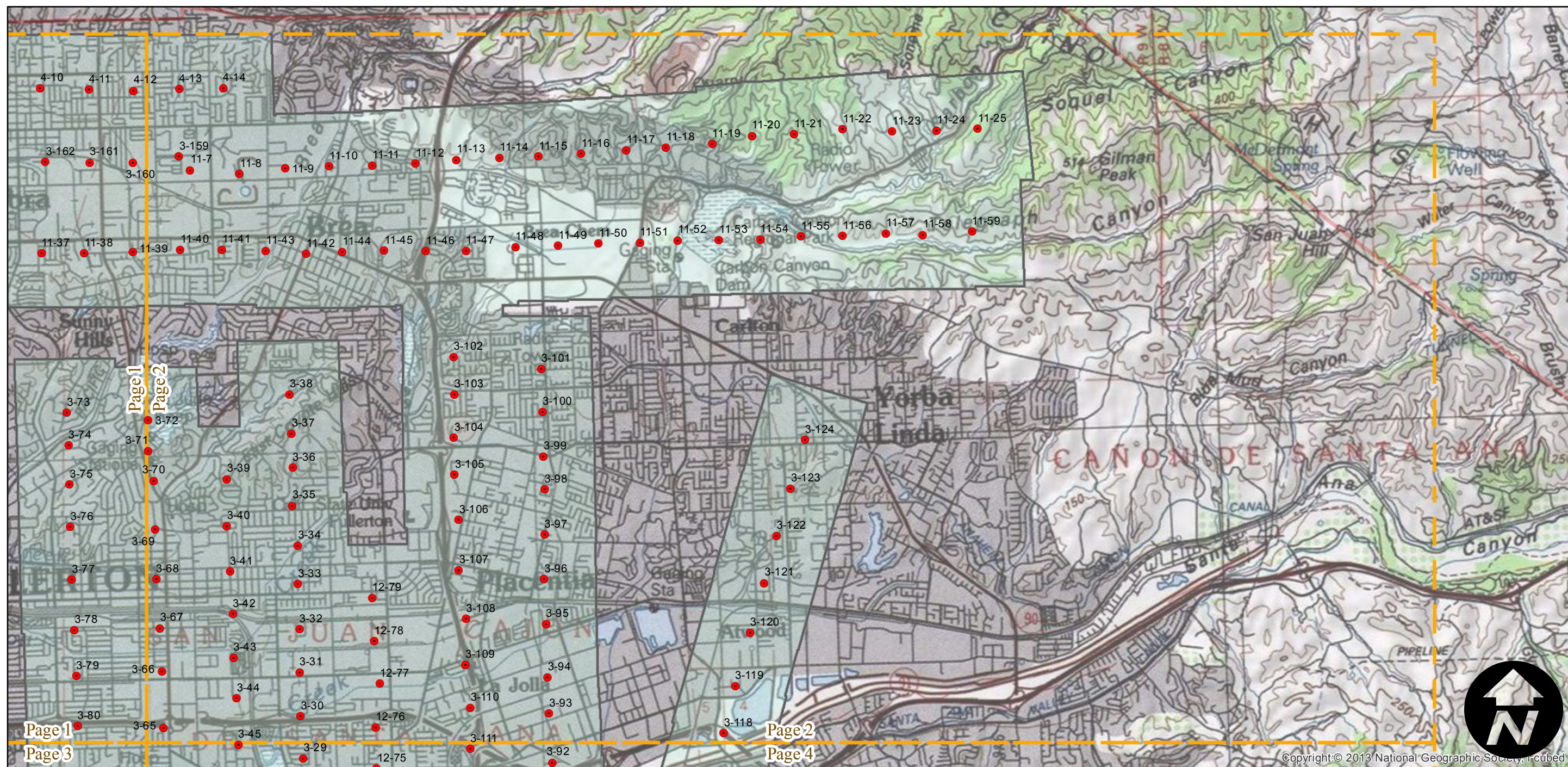
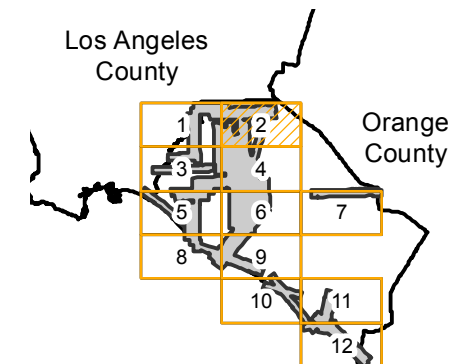
Counties: Orange, Los Angeles  
 Flight date(s): 08-01-1947 to 10-31-1947  
 Scale: 1: 7,200  
 Overlap: 60%

Complete Metadata:  
<http://www.library.ucsb.edu/mil/aerial-photography-tools>

Note: Original 9 X 9-inch negatives are 1:14,400 and provide partial stereo coverage. Oversized pictorial imagery shown on mosaic atlas sheet (1:14,400); coastal areas (1:24,000); 7.5' quad sheets (1:31,680); 15' quad sheets (1:63,360). Index sheets for pictorial mosaic series filed in regular index collection. See original flight indexes for more information. Imagery acquired from Whittier College, January 2013.

- MIL owns frame
- MIL does not own frame

## FLIGHT LOCATION



0 1 2 4 Miles

Index to Aerial Photography  
 Page 2 of 12

Scale of this index: 1:60,000

# C-11730 (1:7.2K)

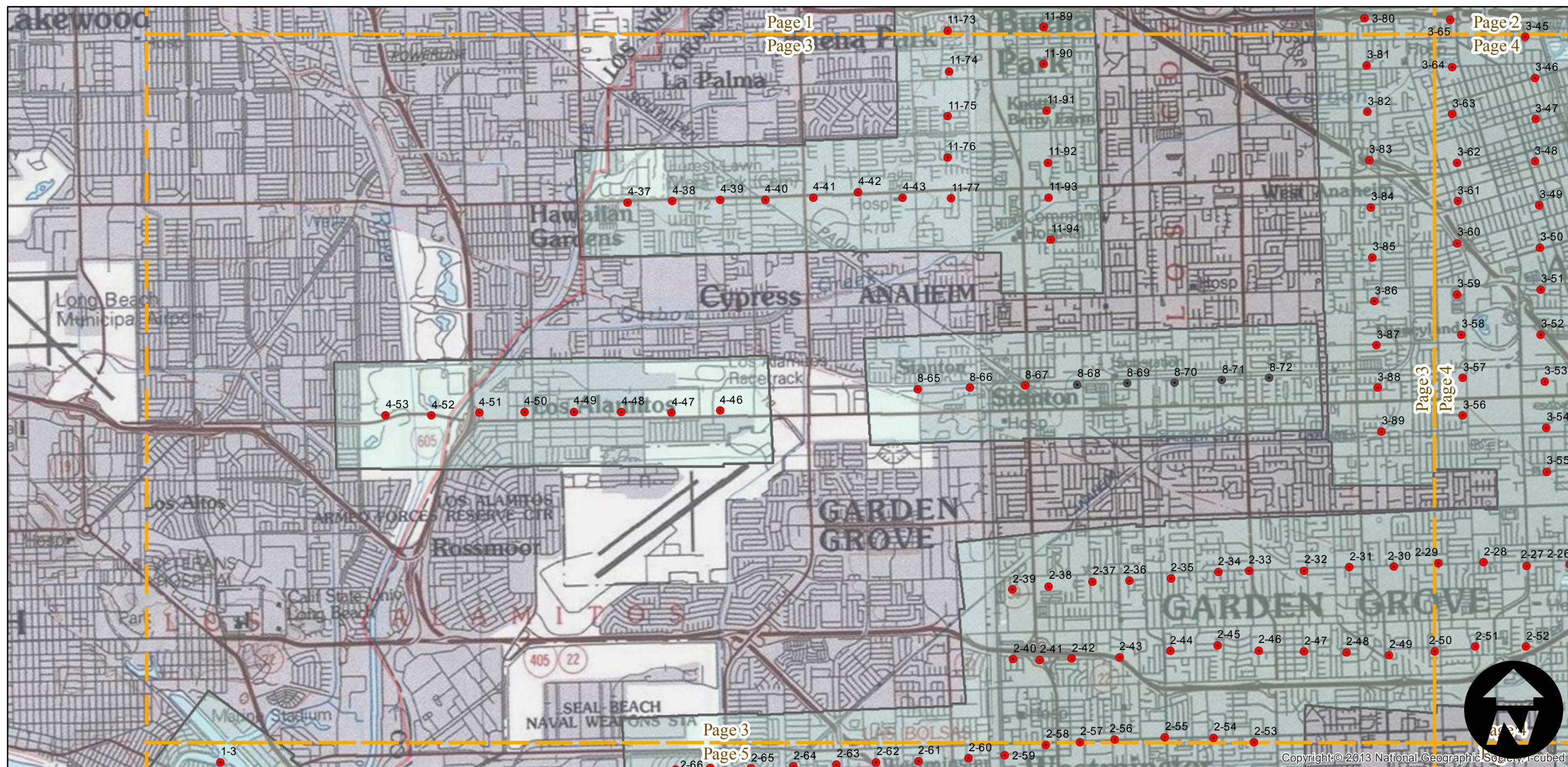
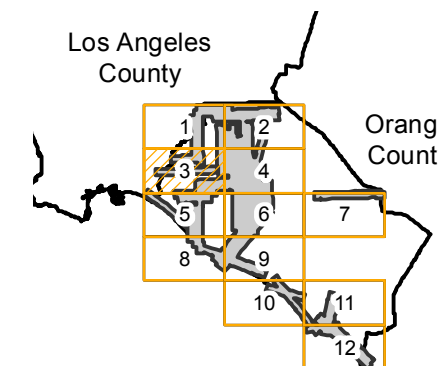
Counties: Orange, Los Angeles  
 Flight date(s): 08-01-1947 to 10-31-1947  
 Scale: 1: 7,200  
 Overlap: 60%

Complete Metadata:  
<http://www.library.ucsb.edu/mil/aerial-photography-tools>

Note: Original 9 X 9-inch negatives are 1:14,400 and provide partial stereo coverage. Oversized pictorial imagery shown on mosaic atlas sheet (1:14,400); coastal areas (1:24,000); 7.5' quad sheets (1:31,680); 15' quad sheets (1:63,360). Index sheets for pictorial mosaic series filed in regular index collection. See original flight indexes for more information. Imagery acquired from Whittier College, January 2013.

- MIL owns frame
- MIL does not own frame

## FLIGHT LOCATION



0 1 2 4 Miles

Index to Aerial Photography  
 Page 3 of 12

Scale of this index: 1:60,000

Copyright © 2013 National Geographic Society, i-cubed

# C-11730 (1:7.2K)

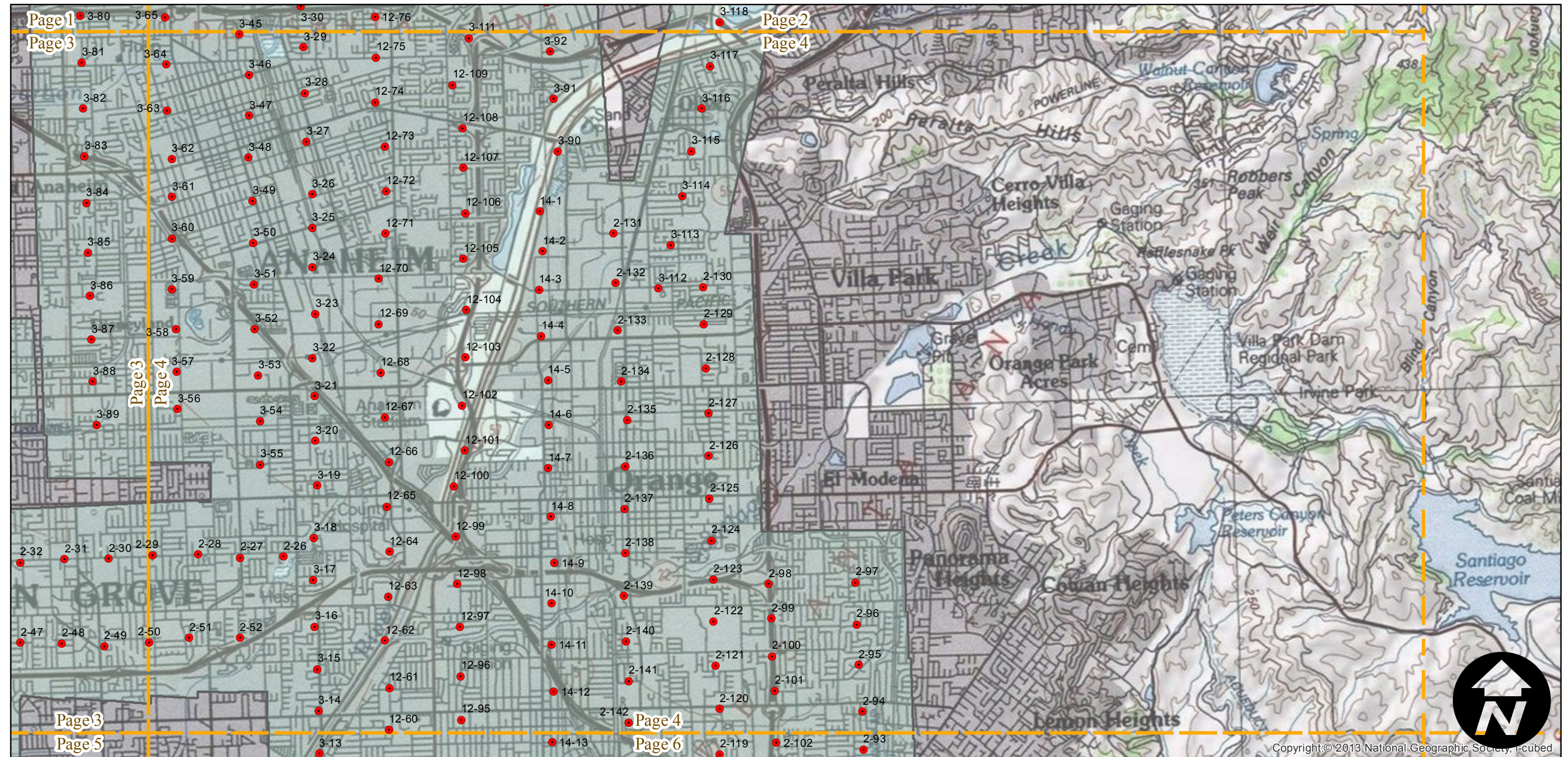
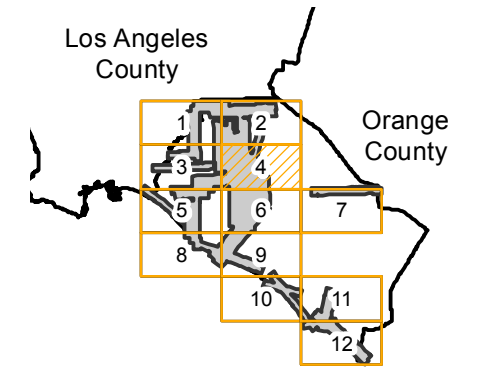
Counties: Orange, Los Angeles  
 Flight date(s): 08-01-1947 to 10-31-1947  
 Scale: 1: 7,200  
 Overlap: 60%

Complete Metadata:  
<http://www.library.ucsb.edu/mil/aerial-photography-tools>

Note: Original 9 X 9-inch negatives are 1:14,400 and provide partial stereo coverage. Oversized pictorial imagery shown on mosaic atlas sheet (1:14,400); coastal areas (1:24,000); 7.5' quad sheets (1:31,680); 15' quad sheets (1:63,360). Index sheets for pictorial mosaic series filed in regular index collection. See original flight indexes for more information. Imagery acquired from Whittier College, January 2013.

- MIL owns frame
- MIL does not own frame

## FLIGHT LOCATION



0 1 2 4 Miles

Index to Aerial Photography  
 Page 4 of 12

Scale of this index: 1:60,000

# C-11730 (1:7.2K)

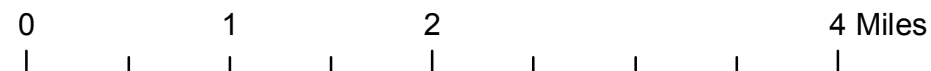
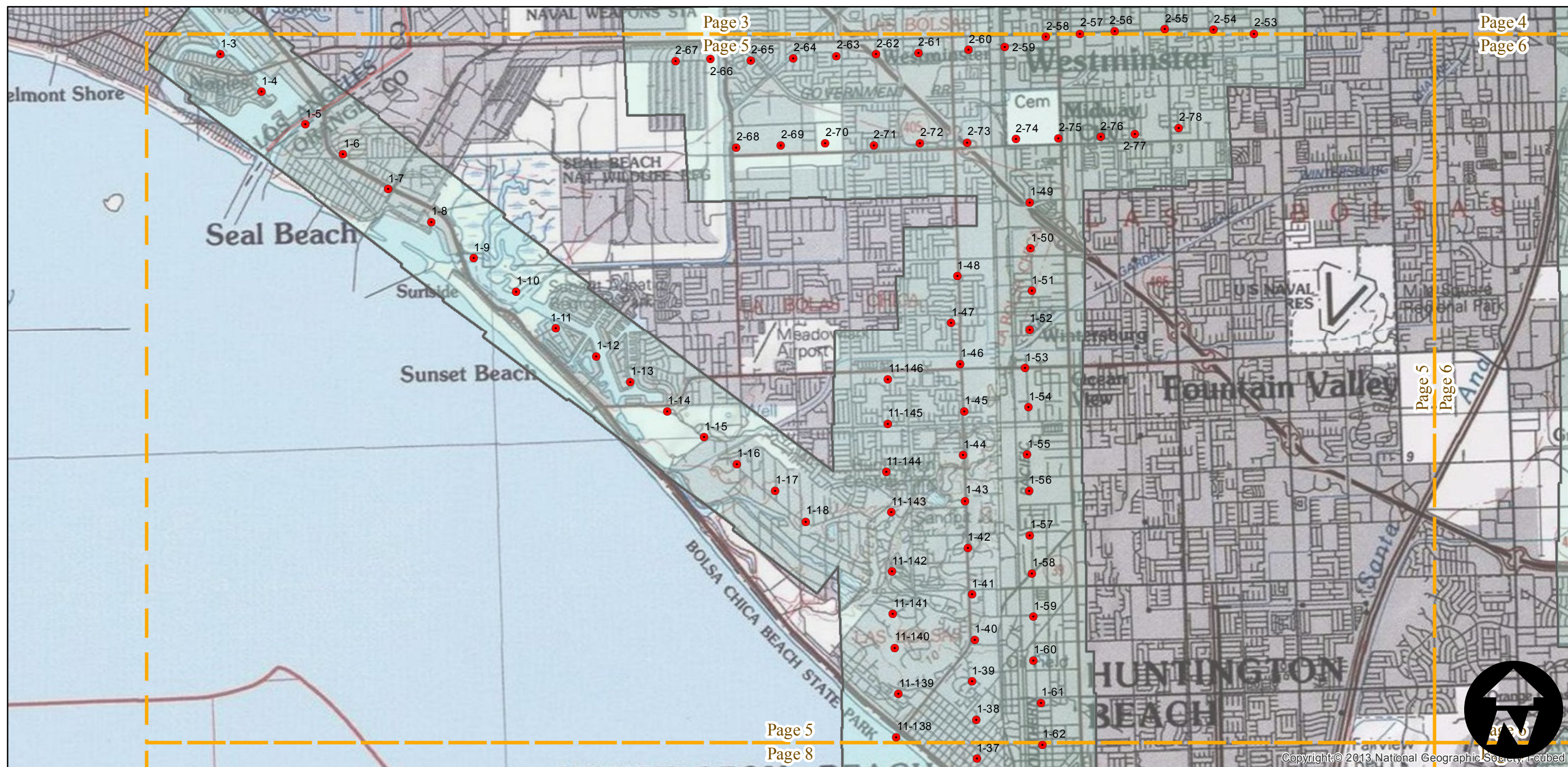
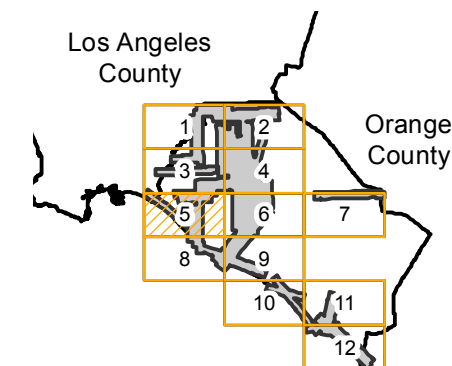
Counties: Orange, Los Angeles  
 Flight date(s): 08-01-1947 to 10-31-1947  
 Scale: 1: 7,200  
 Overlap: 60%

Complete Metadata:  
<http://www.library.ucsb.edu/mil/aerial-photography-tools>

Note: Original 9 X 9-inch negatives are 1:14,400 and provide partial stereo coverage. Oversized pictorial imagery shown on mosaic atlas sheet (1:14,400); coastal areas (1:24,000); 7.5' quad sheets (1:31,680); 15' quad sheets (1:63,360). Index sheets for pictorial mosaic series filed in regular index collection. See original flight indexes for more information. Imagery acquired from Whittier College, January 2013.

- MIL owns frame
- MIL does not own frame

## FLIGHT LOCATION



# C-11730 (1:7.2K)

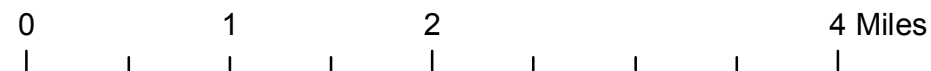
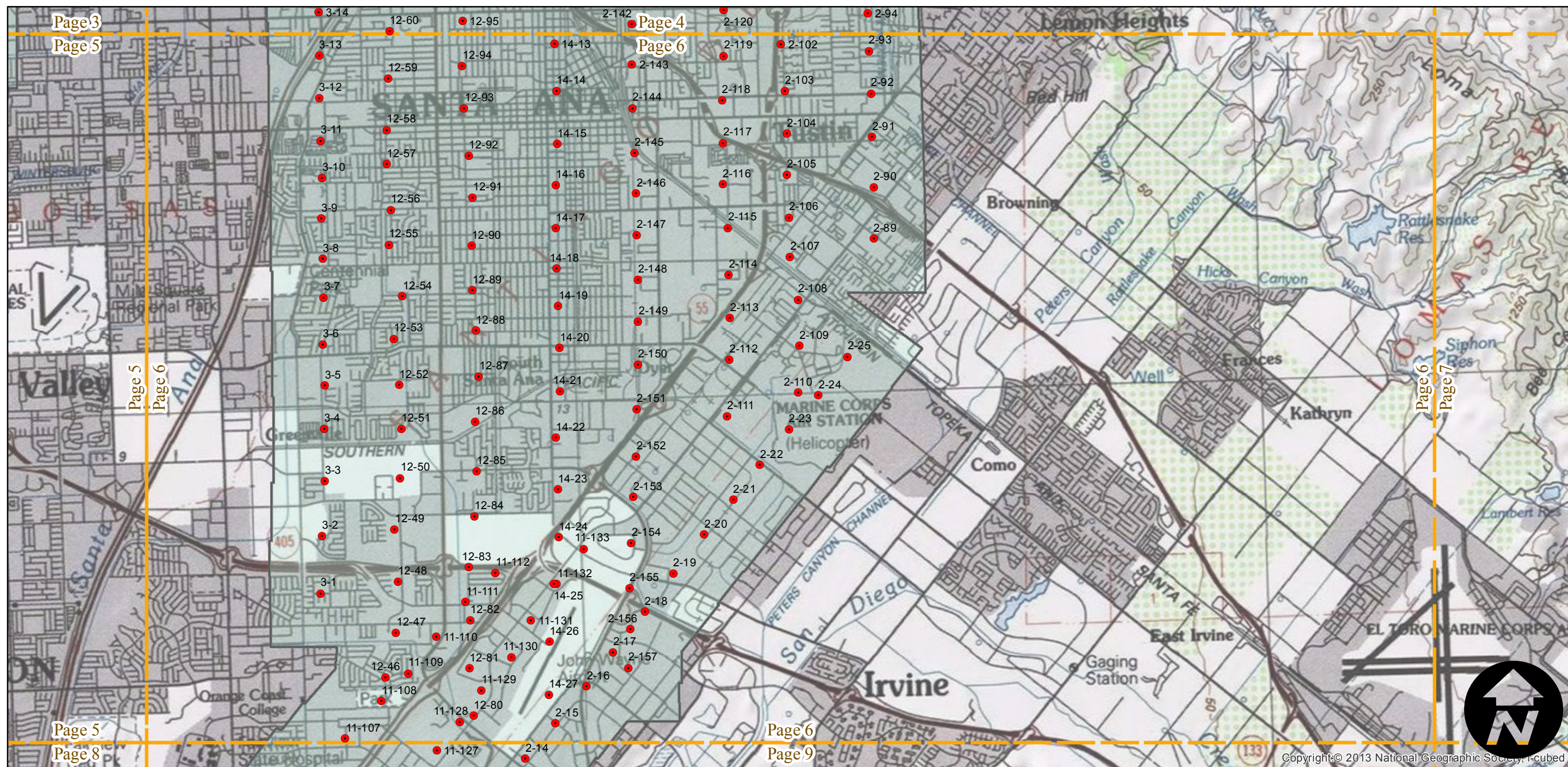
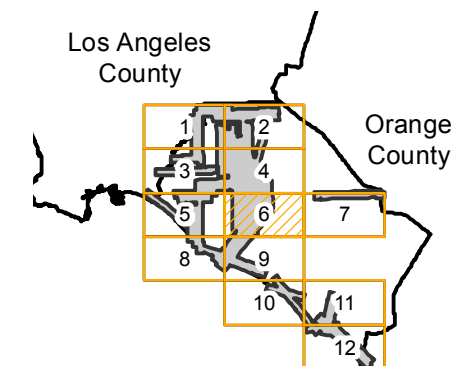
Counties: Orange, Los Angeles  
 Flight date(s): 08-01-1947 to 10-31-1947  
 Scale: 1: 7,200  
 Overlap: 60%

Complete Metadata:  
<http://www.library.ucsb.edu/mil/aerial-photography-tools>

Note: Original 9 X 9-inch negatives are 1:14,400 and provide partial stereo coverage. Oversized pictorial imagery shown on mosaic atlas sheet (1:14,400); coastal areas (1:24,000); 7.5' quad sheets (1:31,680); 15' quad sheets (1:63,360). Index sheets for pictorial mosaic series filed in regular index collection. See original flight indexes for more information. Imagery acquired from Whittier College, January 2013.

- MIL owns frame
- MIL does not own frame

## FLIGHT LOCATION



# C-11730 (1:7.2K)

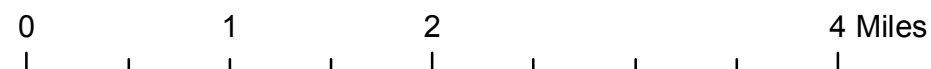
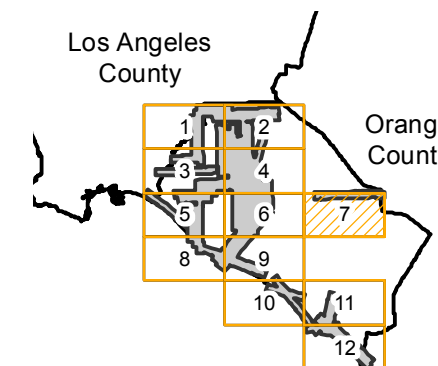
Counties: Orange, Los Angeles  
 Flight date(s): 08-01-1947 to 10-31-1947  
 Scale: 1: 7,200  
 Overlap: 60%

Complete Metadata:  
<http://www.library.ucsb.edu/mil/aerial-photography-tools>

Note: Original 9 X 9-inch negatives are 1:14,400 and provide partial stereo coverage. Oversized pictorial imagery shown on mosaic atlas sheet (1:14,400); coastal areas (1:24,000); 7.5' quad sheets (1:31,680); 15' quad sheets (1:63,360). Index sheets for pictorial mosaic series filed in regular index collection. See original flight indexes for more information. Imagery acquired from Whittier College, January 2013.

- MIL owns frame
- MIL does not own frame

## FLIGHT LOCATION





# C-11730 (1:7.2K)

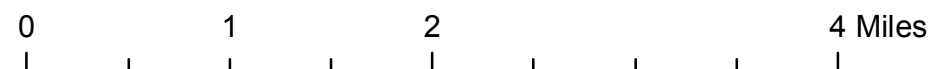
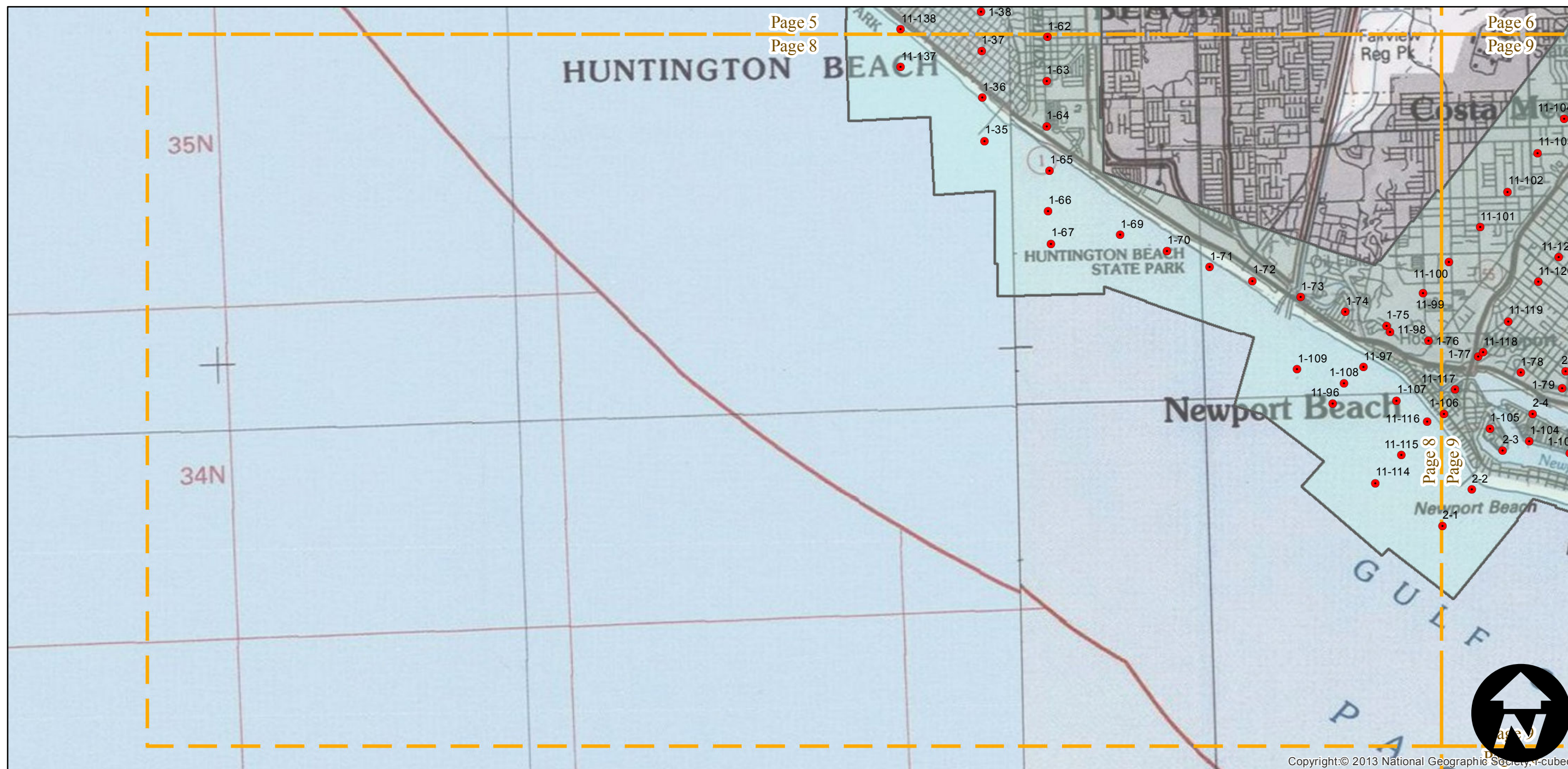
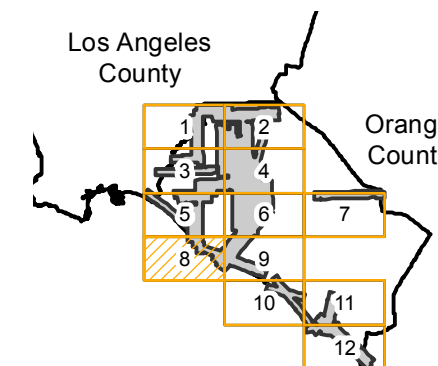
Counties: Orange, Los Angeles  
 Flight date(s): 08-01-1947 to 10-31-1947  
 Scale: 1: 7,200  
 Overlap: 60%

Complete Metadata:  
<http://www.library.ucsb.edu/mil/aerial-photography-tools>

Note: Original 9 X 9-inch negatives are 1:14,400 and provide partial stereo coverage. Oversized pictorial imagery shown on mosaic atlas sheet (1:14,400); coastal areas (1:24,000); 7.5' quad sheets (1:31,680); 15' quad sheets (1:63,360). Index sheets for pictorial mosaic series filed in regular index collection. See original flight indexes for more information. Imagery acquired from Whittier College, January 2013.

- MIL owns frame
- MIL does not own frame

## FLIGHT LOCATION



# C-11730 (1:7.2K)

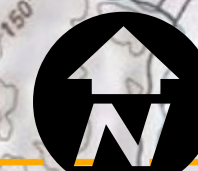
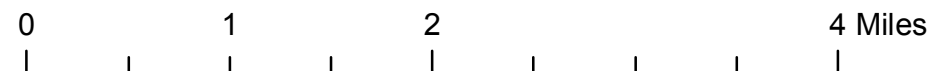
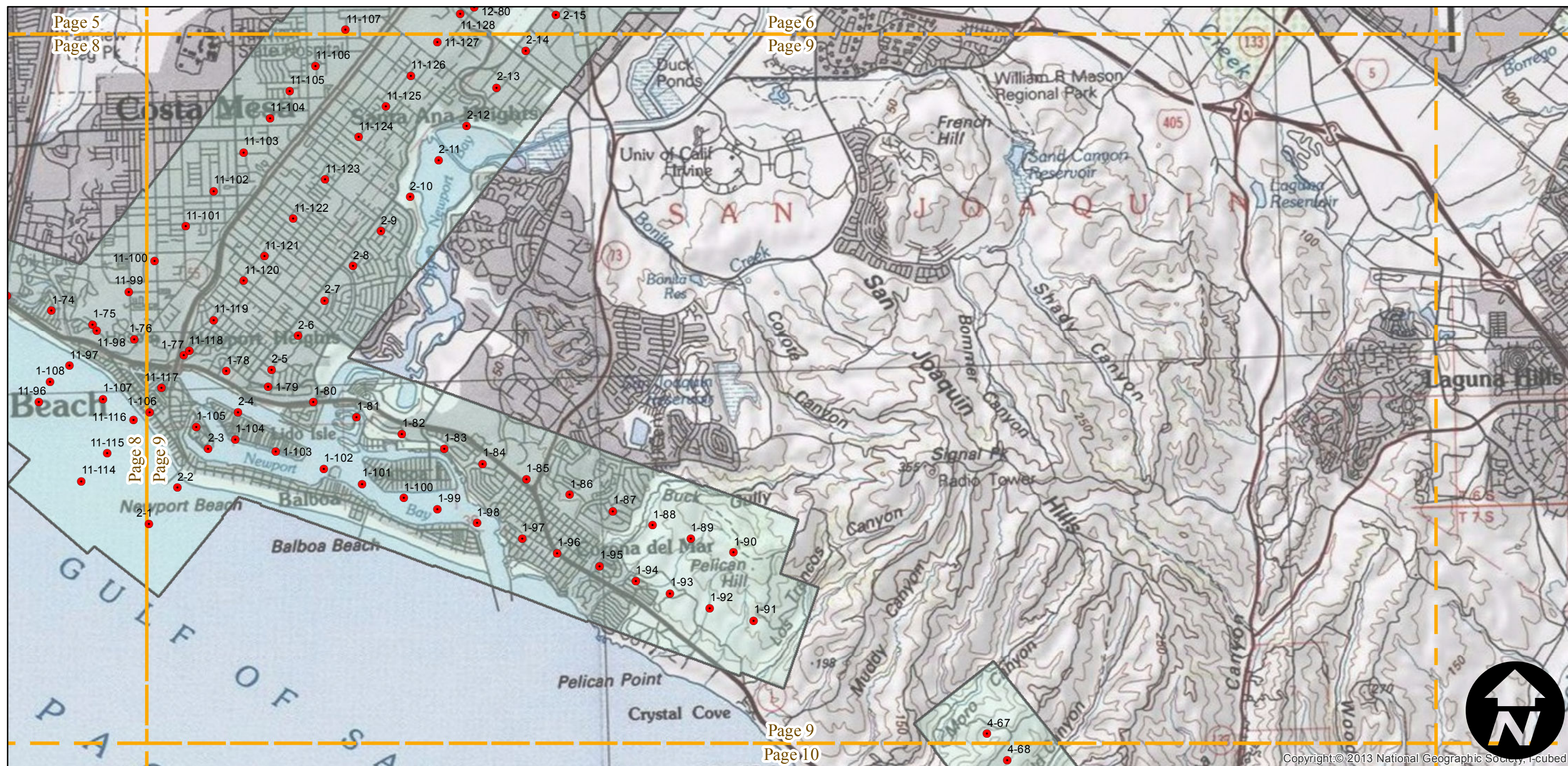
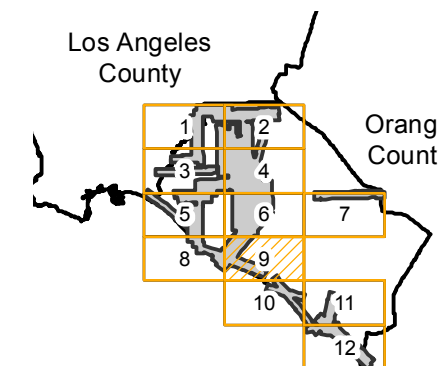
Counties: Orange, Los Angeles  
 Flight date(s): 08-01-1947 to 10-31-1947  
 Scale: 1: 7,200  
 Overlap: 60%

Complete Metadata:  
<http://www.library.ucsb.edu/mil/aerial-photography-tools>

Note: Original 9 X 9-inch negatives are 1:14,400 and provide partial stereo coverage. Oversized pictorial imagery shown on mosaic atlas sheet (1:14,400); coastal areas (1:24,000); 7.5' quad sheets (1:31,680); 15' quad sheets (1:63,360). Index sheets for pictorial mosaic series filed in regular index collection. See original flight indexes for more information. Imagery acquired from Whittier College, January 2013.

- MIL owns frame
- MIL does not own frame

## FLIGHT LOCATION



# C-11730 (1:7.2K)

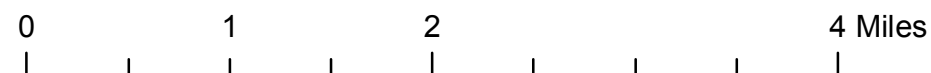
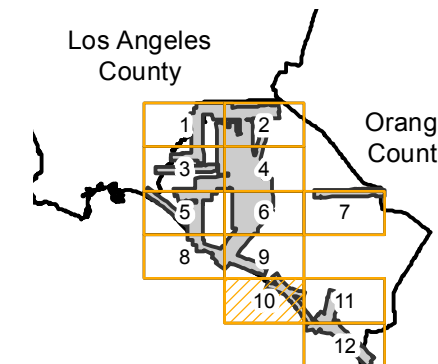
Counties: Orange, Los Angeles  
 Flight date(s): 08-01-1947 to 10-31-1947  
 Scale: 1: 7,200  
 Overlap: 60%

Complete Metadata:  
<http://www.library.ucsb.edu/mil/aerial-photography-tools>

Note: Original 9 X 9-inch negatives are 1:14,400 and provide partial stereo coverage. Oversized pictorial imagery shown on mosaic atlas sheet (1:14,400); coastal areas (1:24,000); 7.5' quad sheets (1:31,680); 15' quad sheets (1:63,360). Index sheets for pictorial mosaic series filed in regular index collection. See original flight indexes for more information. Imagery acquired from Whittier College, January 2013.

- MIL owns frame
- MIL does not own frame

## FLIGHT LOCATION



# C-11730 (1:7.2K)

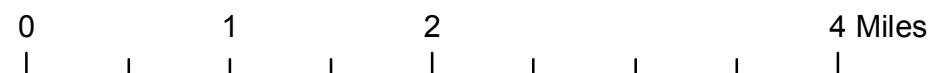
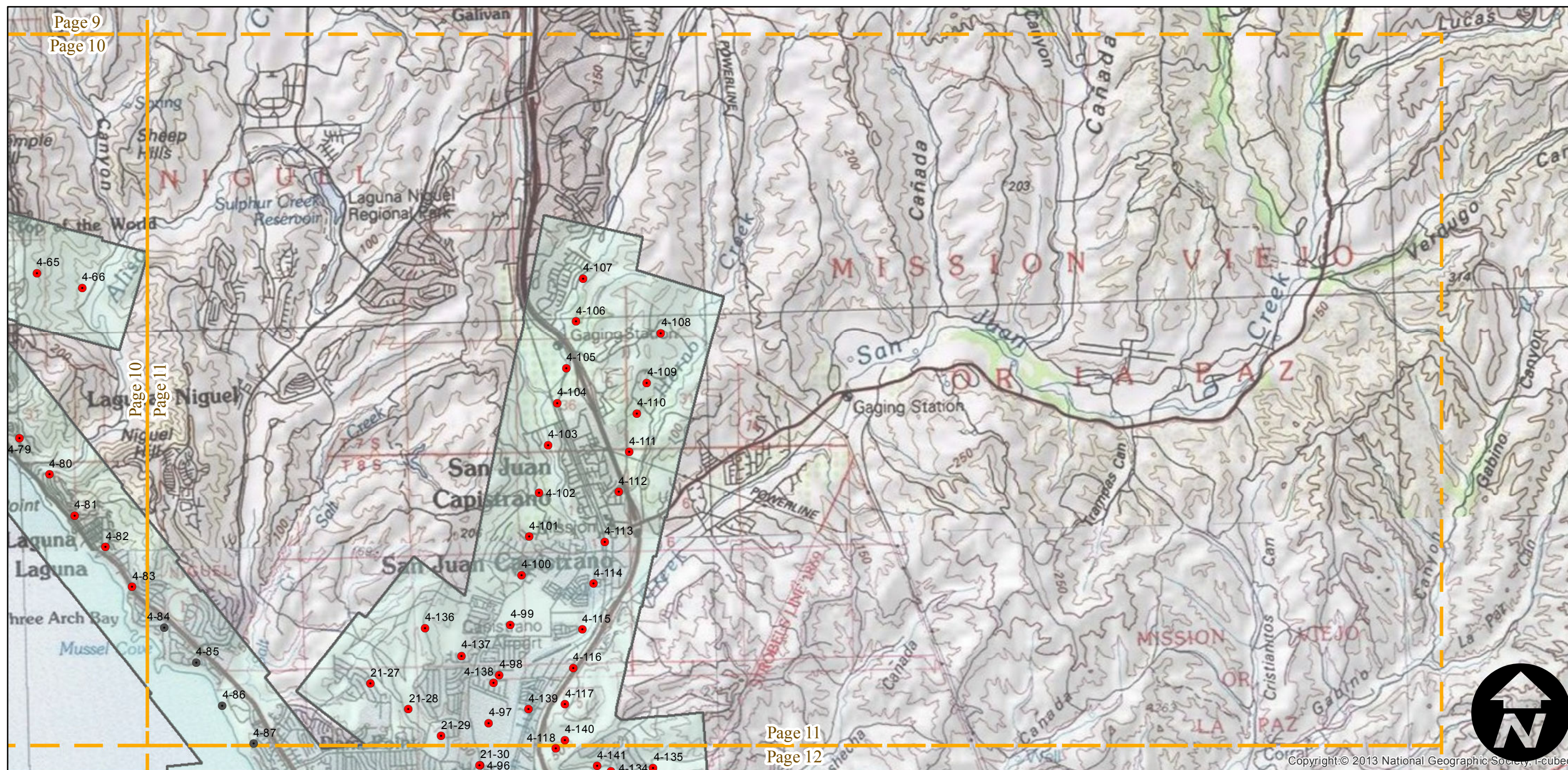
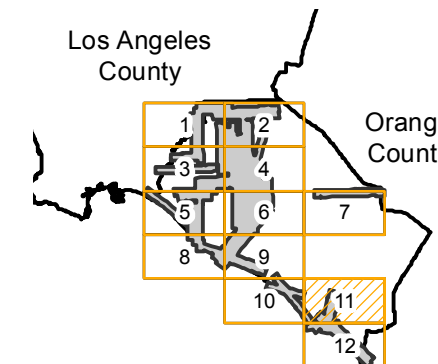
Counties: Orange, Los Angeles  
 Flight date(s): 08-01-1947 to 10-31-1947  
 Scale: 1: 7,200  
 Overlap: 60%

Complete Metadata:  
<http://www.library.ucsb.edu/mil/aerial-photography-tools>

Note: Original 9 X 9-inch negatives are 1:14,400 and provide partial stereo coverage. Oversized pictorial imagery shown on mosaic atlas sheet (1:14,400); coastal areas (1:24,000); 7.5' quad sheets (1:31,680); 15' quad sheets (1:63,360). Index sheets for pictorial mosaic series filed in regular index collection. See original flight indexes for more information. Imagery acquired from Whittier College, January 2013.

- MIL owns frame
- MIL does not own frame

## FLIGHT LOCATION



# C-11730 (1:7.2K)

Counties: Orange, Los Angeles  
 Flight date(s): 08-01-1947 to 10-31-1947  
 Scale: 1: 7,200  
 Overlap: 60%

Complete Metadata:  
<http://www.library.ucsb.edu/mil/aerial-photography-tools>

Note: Original 9 X 9-inch negatives are 1:14,400 and provide partial stereo coverage. Oversized pictorial imagery shown on mosaic atlas sheet (1:14,400); coastal areas (1:24,000); 7.5' quad sheets (1:31,680); 15' quad sheets (1:63,360). Index sheets for pictorial mosaic series filed in regular index collection. See original flight indexes for more information. Imagery acquired from Whittier College, January 2013.

- MIL owns frame
- MIL does not own frame

## FLIGHT LOCATION

