

C-11730 (1:14.4K)

Counties: Los Angeles, Orange, Riverside, San Bernardino, San Diego

Flight date(s): 08-01-1947 to 10-31-1947

Scale: 1:14,400

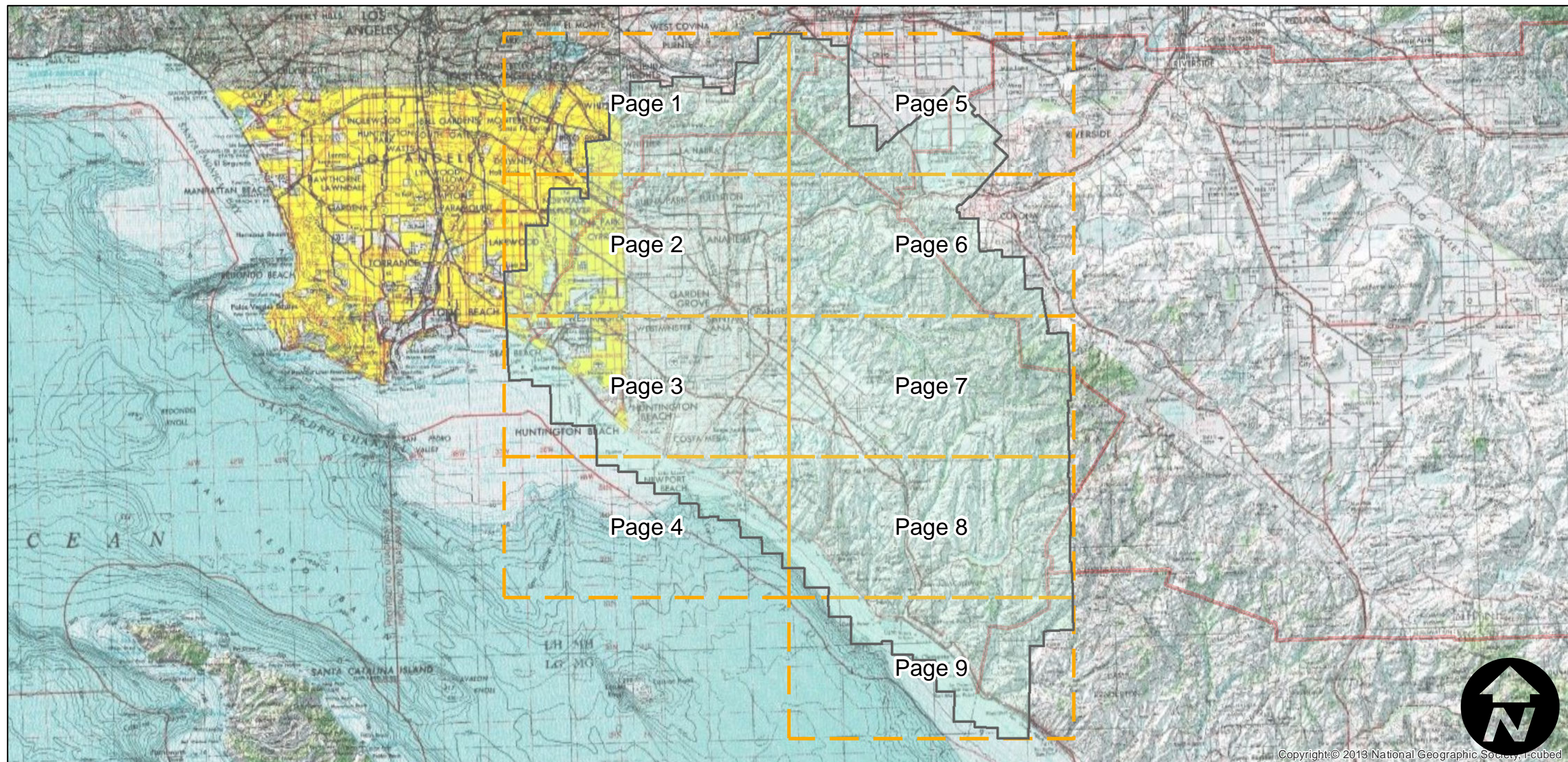
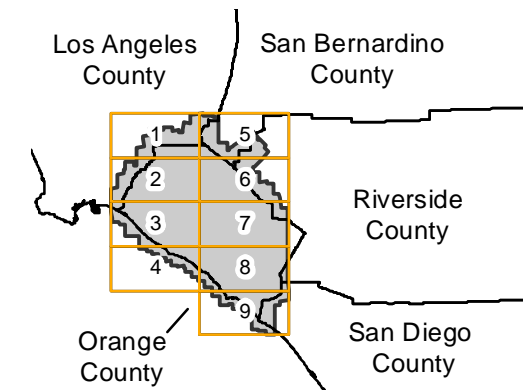
Overlap: 60%

Note: Original 9 X 9-inch negatives are 1:14,400 and provide partial stereo coverage. Oversized pictorial imagery shown on mosaic atlas sheet (1:14,400); coastal areas (1:24,000); 7.5' quad sheets (1:31,680); 15' quad sheets (1:63,360). Index sheets for pictorial mosaic series filed in regular index collection. See original flight indexes for more information. Imagery acquired from Whittier College, January 2013

Complete Metadata:

<http://www.library.ucsb.edu/mil/aerial-photography-tools>

FLIGHT LOCATION



Index to Aerial Photography
Page Key

Scale of this index: 1:450,000

Copyright © 2013 National Geographic Society, i-cubed

C-11730 (1:14.4K)

Counties: Los Angeles, Orange, Riverside, San Bernardino, San Diego

Flight date(s): 08-01-1947 to 10-31-1947

Scale: 1:14,400

Overlap: 60%

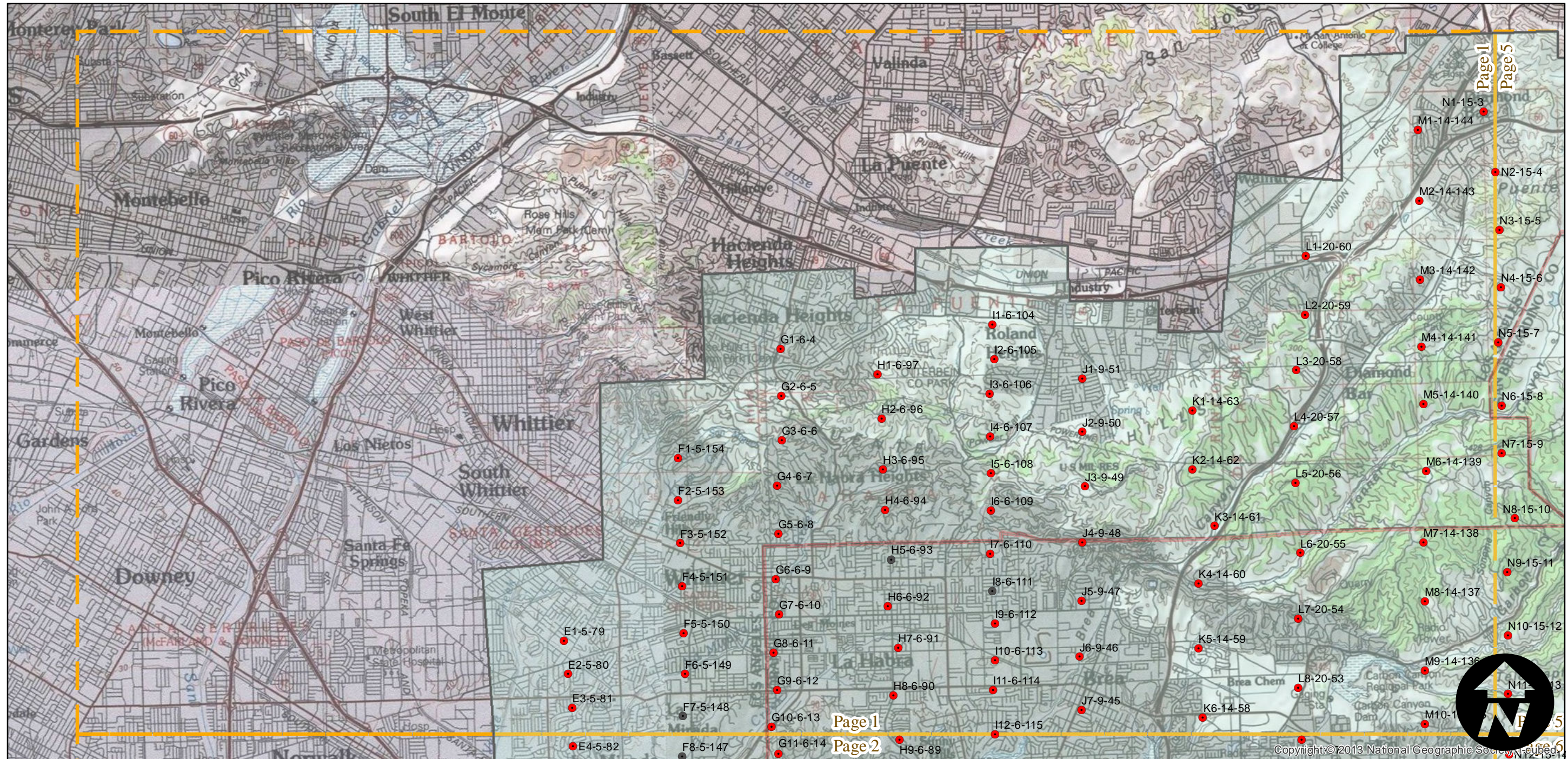
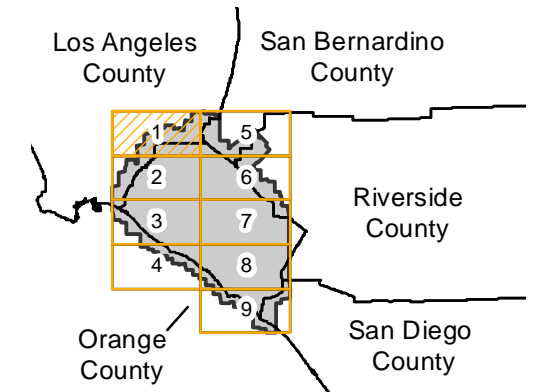
Complete Metadata:

<http://www.library.ucsb.edu/mil/aerial-photography-tools>

Note: Original 9 X 9-inch negatives are 1:14,400 and provide partial stereo coverage. Oversized pictorial imagery shown on mosaic atlas sheet (1:14,400); coastal areas (1:24,000); 7.5' quad sheets (1:31,680); 15' quad sheets (1:63,360). Index sheets for pictorial mosaic series filed in regular index collection. See original flight indexes for more information. Imagery acquired from Whittier College, January 2013

- MIL owns frame
- MIL does not own frame

FLIGHT LOCATION



0 1 2 4 Miles

Index to Aerial Photography
Page 1 of 9

Scale of this index: 1:90,000

C-11730 (1:14.4K)

Counties: Los Angeles, Orange, Riverside, San Bernardino, San Diego

Flight date(s): 08-01-1947 to 10-31-1947

Scale: 1:14,400

Overlap: 60%

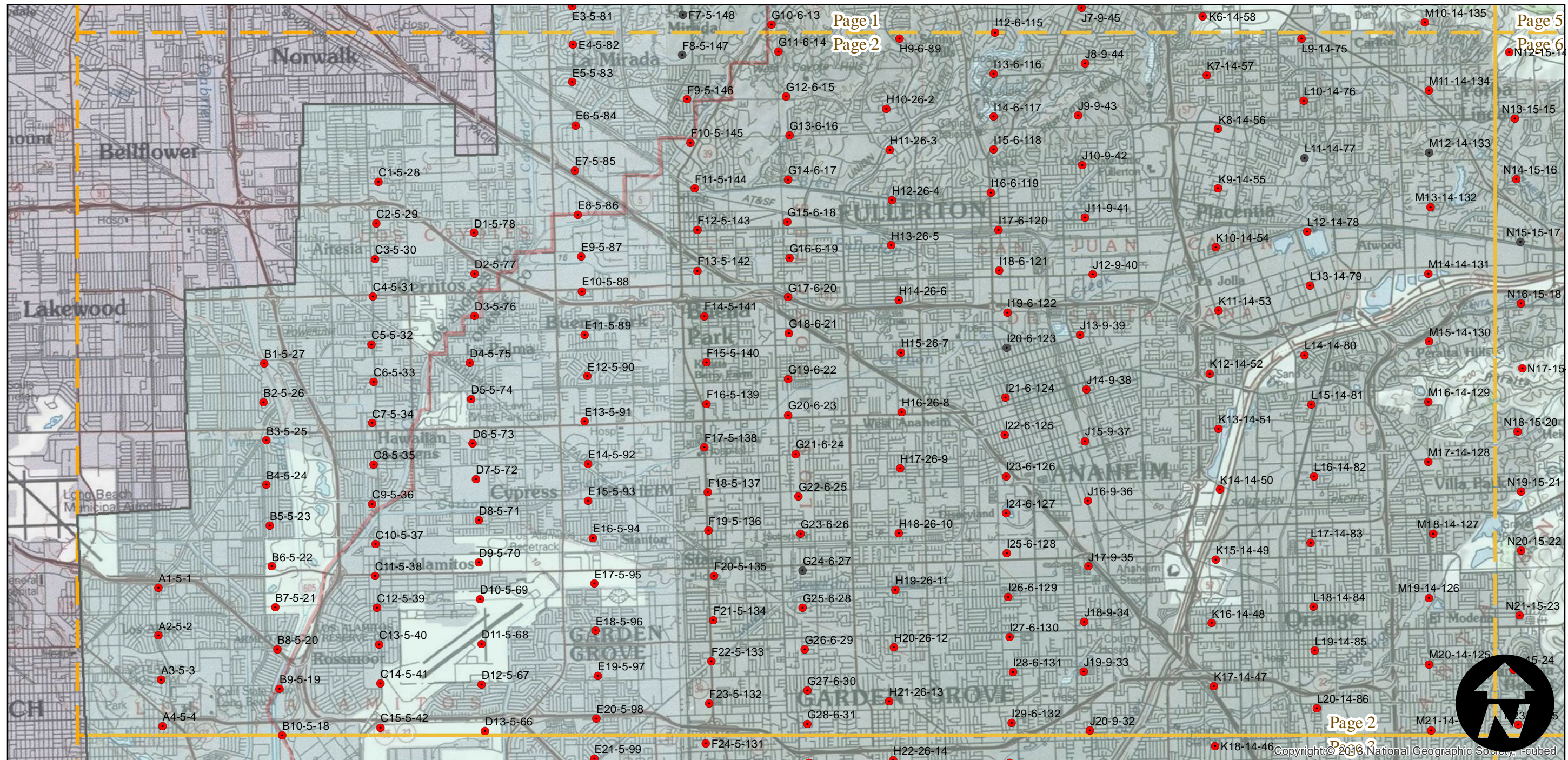
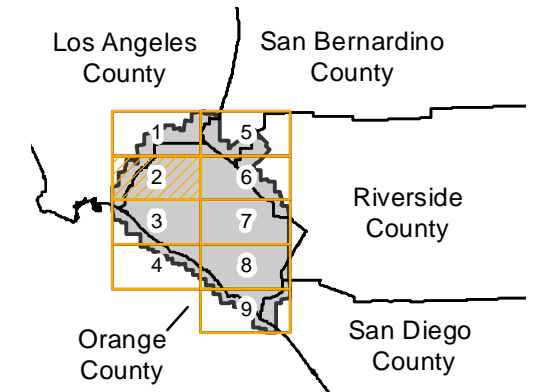
Complete Metadata:

<http://www.library.ucsb.edu/mil/aerial-photography-tools>

Note: Original 9 X 9-inch negatives are 1:14,400 and provide partial stereo coverage. Oversized pictorial imagery shown on mosaic atlas sheet (1:14,400); coastal areas (1:24,000); 7.5' quad sheets (1:31,680); 15' quad sheets (1:63,360). Index sheets for pictorial mosaic series filed in regular index collection. See original flight indexes for more information. Imagery acquired from Whittier College, January 2013

- MIL owns frame
- MIL does not own frame

FLIGHT LOCATION



0 1 2 4 Miles

Index to Aerial Photography
Page 2 of 9

Scale of this index: 1:90,000

C-11730 (1:14.4K)

Counties: Los Angeles, Orange, Riverside, San Bernardino, San Diego

Flight date(s): 08-01-1947 to 10-31-1947

Scale: 1:14,400

Overlap: 60%

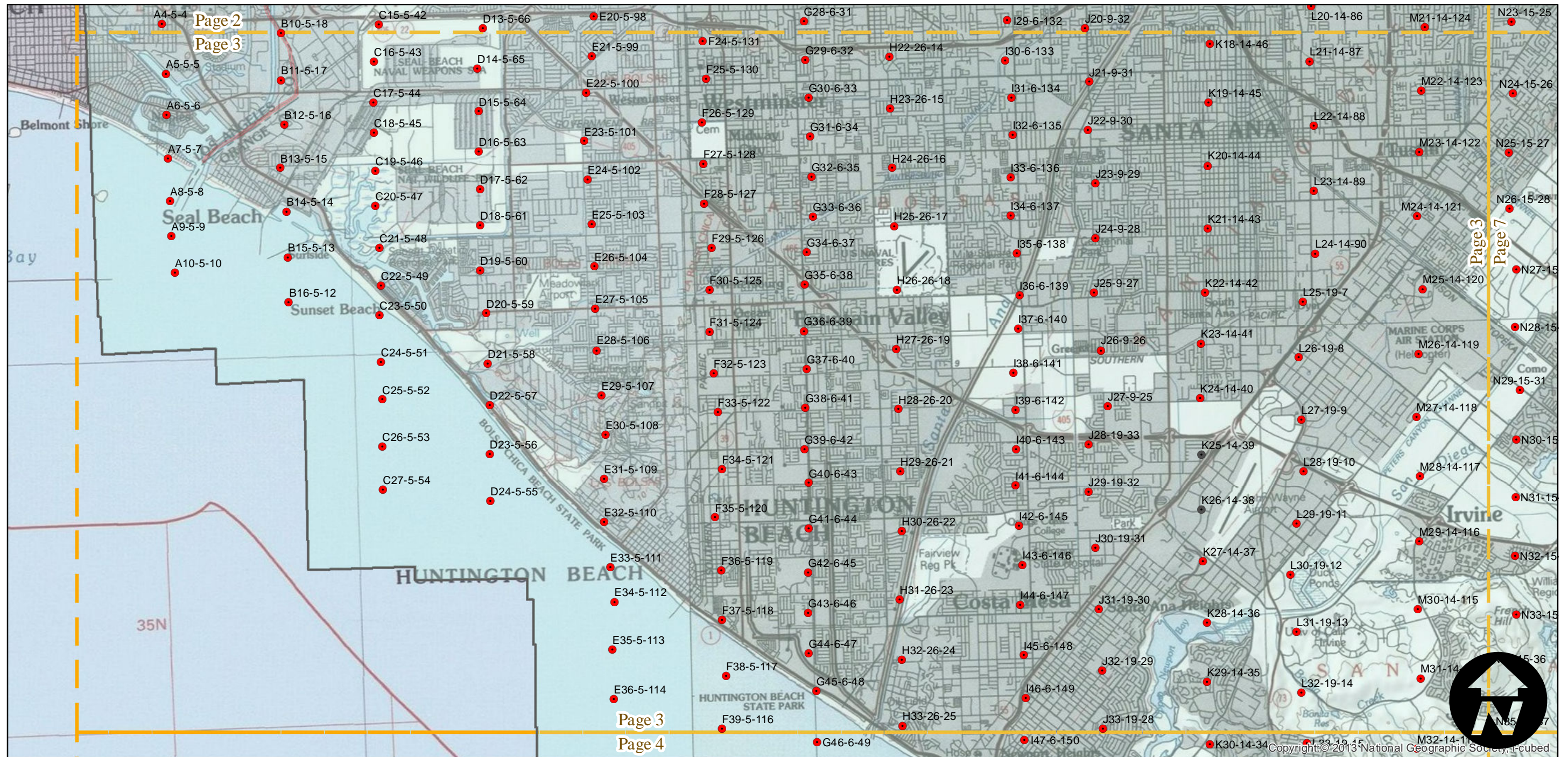
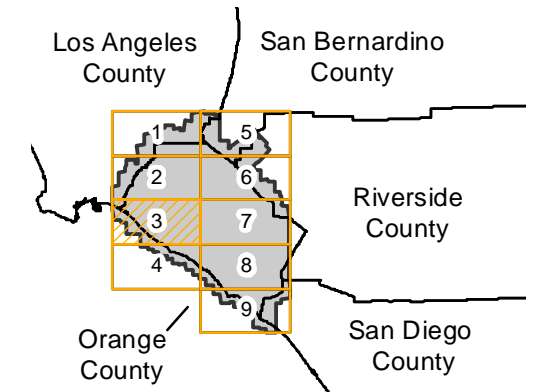
Complete Metadata:

<http://www.library.ucsb.edu/mil/aerial-photography-tools>

Note: Original 9 X 9-inch negatives are 1:14,400 and provide partial stereo coverage. Oversized pictorial imagery shown on mosaic atlas sheet (1:14,400); coastal areas (1:24,000); 7.5' quad sheets (1:31,680); 15' quad sheets (1:63,360). Index sheets for pictorial mosaic series filed in regular index collection. See original flight indexes for more information. Imagery acquired from Whittier College, January 2013

- MIL owns frame
- MIL does not own frame

FLIGHT LOCATION



0 1 2 4 Miles

Index to Aerial Photography
Page 3 of 9

Scale of this index: 1:90,000

C-11730 (1:14.4K)

Counties: Los Angeles, Orange, Riverside, San Bernardino, San Diego

Flight date(s): 08-01-1947 to 10-31-1947

Scale: 1:14,400

Overlap: 60%

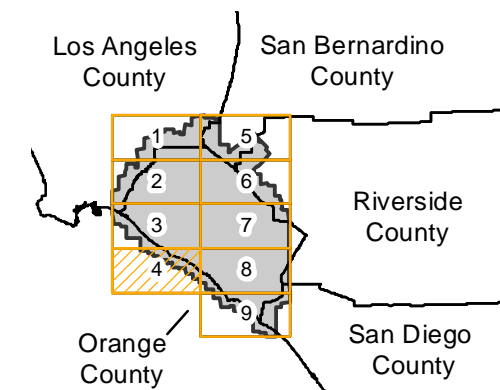
Complete Metadata:

<http://www.library.ucsb.edu/mil/aerial-photography-tools>

Note: Original 9 X 9-inch negatives are 1:14,400 and provide partial stereo coverage. Oversized pictorial imagery shown on mosaic atlas sheet (1:14,400); coastal areas (1:24,000); 7.5' quad sheets (1:31,680); 15' quad sheets (1:63,360). Index sheets for pictorial mosaic series filed in regular index collection. See original flight indexes for more information. Imagery acquired from Whittier College, January 2013

- MIL owns frame
- MIL does not own frame

FLIGHT LOCATION



0 1 2 4 Miles

Index to Aerial Photography
Page 4 of 9

Scale of this index: 1:90,000

Copyright: © 2013 National Geographic Society, Inc.

C-11730 (1:14.4K)

Counties: Los Angeles, Orange, Riverside, San Bernardino, San Diego

Flight date(s): 08-01-1947 to 10-31-1947

Scale: 1:14,400

Overlap: 60%

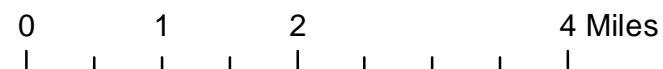
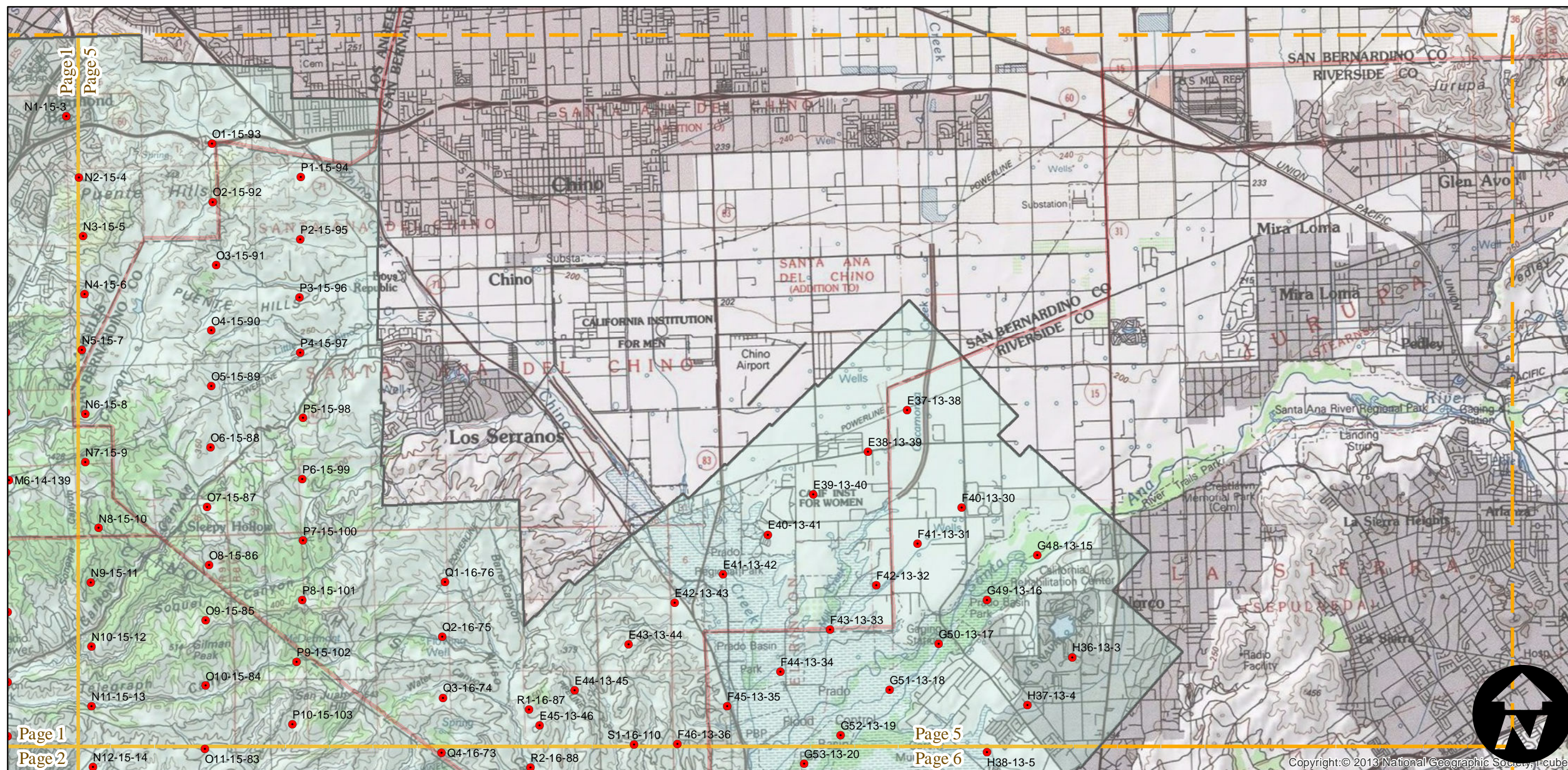
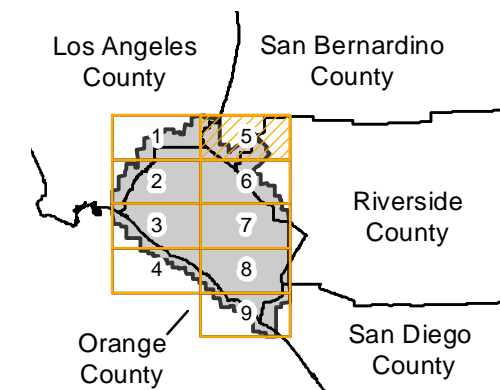
Complete Metadata:

<http://www.library.ucsb.edu/mil/aerial-photography-tools>

Note: Original 9 X 9-inch negatives are 1:14,400 and provide partial stereo coverage. Oversized pictorial imagery shown on mosaic atlas sheet (1:14,400); coastal areas (1:24,000); 7.5' quad sheets (1:31,680); 15' quad sheets (1:63,360). Index sheets for pictorial mosaic series filed in regular index collection. See original flight indexes for more information. Imagery acquired from Whittier College, January 2013

- MIL owns frame
- MIL does not own frame

FLIGHT LOCATION



C-11730 (1:14.4K)

Counties: Los Angeles, Orange, Riverside, San Bernardino, San Diego

Flight date(s): 08-01-1947 to 10-31-1947

Scale: 1:14,400

Overlap: 60%

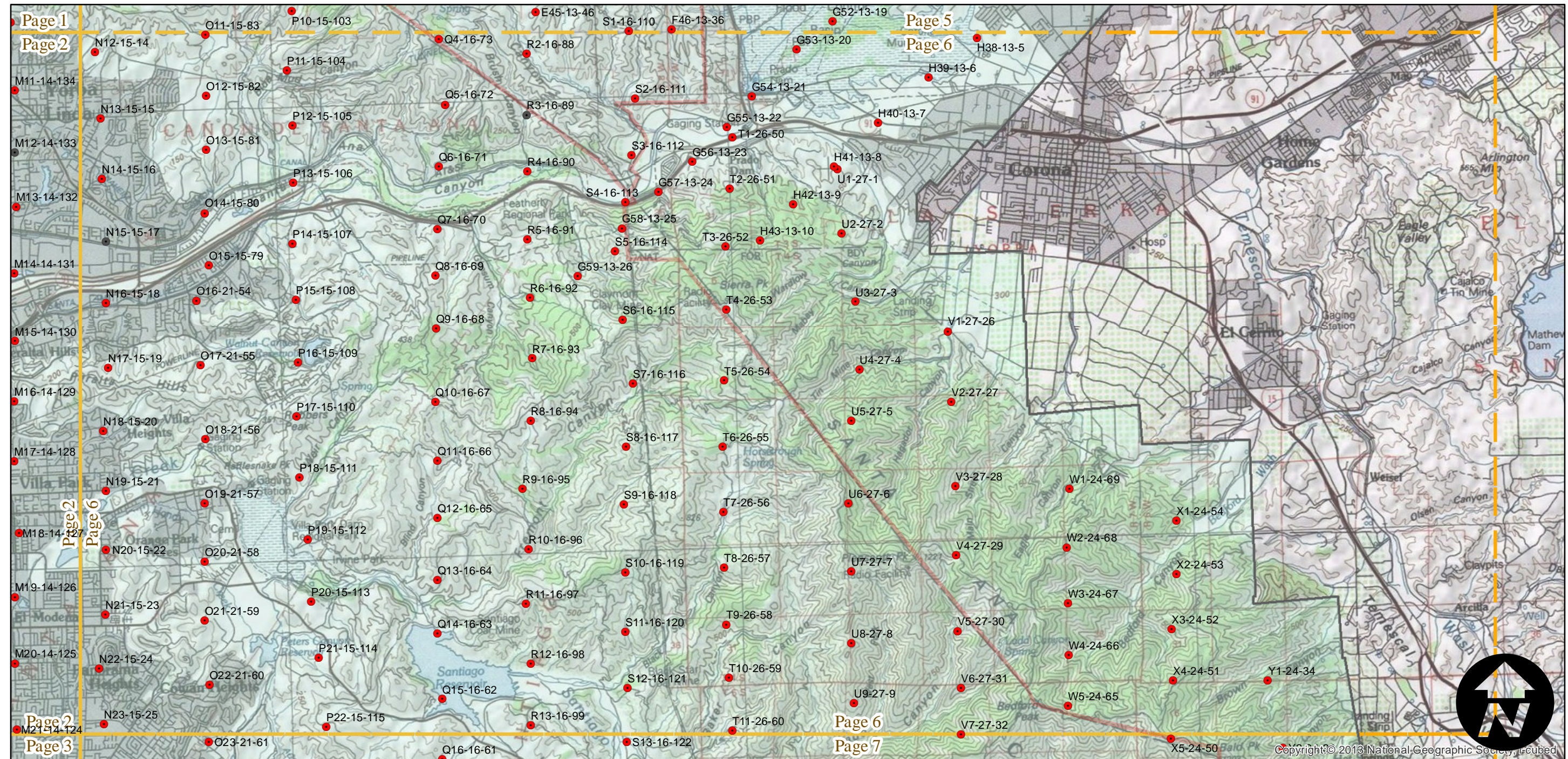
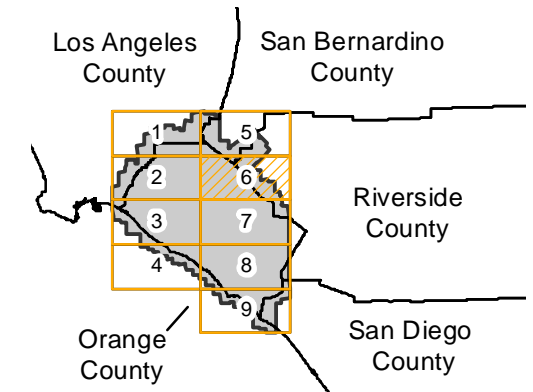
Complete Metadata:

<http://www.library.ucsb.edu/mil/aerial-photography-tools>

Note: Original 9 X 9-inch negatives are 1:14,400 and provide partial stereo coverage. Oversized pictorial imagery shown on mosaic atlas sheet (1:14,400); coastal areas (1:24,000); 7.5' quad sheets (1:31,680); 15' quad sheets (1:63,360). Index sheets for pictorial mosaic series filed in regular index collection. See original flight indexes for more information. Imagery acquired from Whittier College, January 2013

- MIL owns frame
- MIL does not own frame

FLIGHT LOCATION



0 1 2 4 Miles

Index to Aerial Photography
Page 6 of 9

Scale of this index: 1:90,000

C-11730 (1:14.4K)

Counties: Los Angeles, Orange, Riverside, San Bernardino, San Diego

Flight date(s): 08-01-1947 to 10-31-1947

Scale: 1:14,400

Overlap: 60%

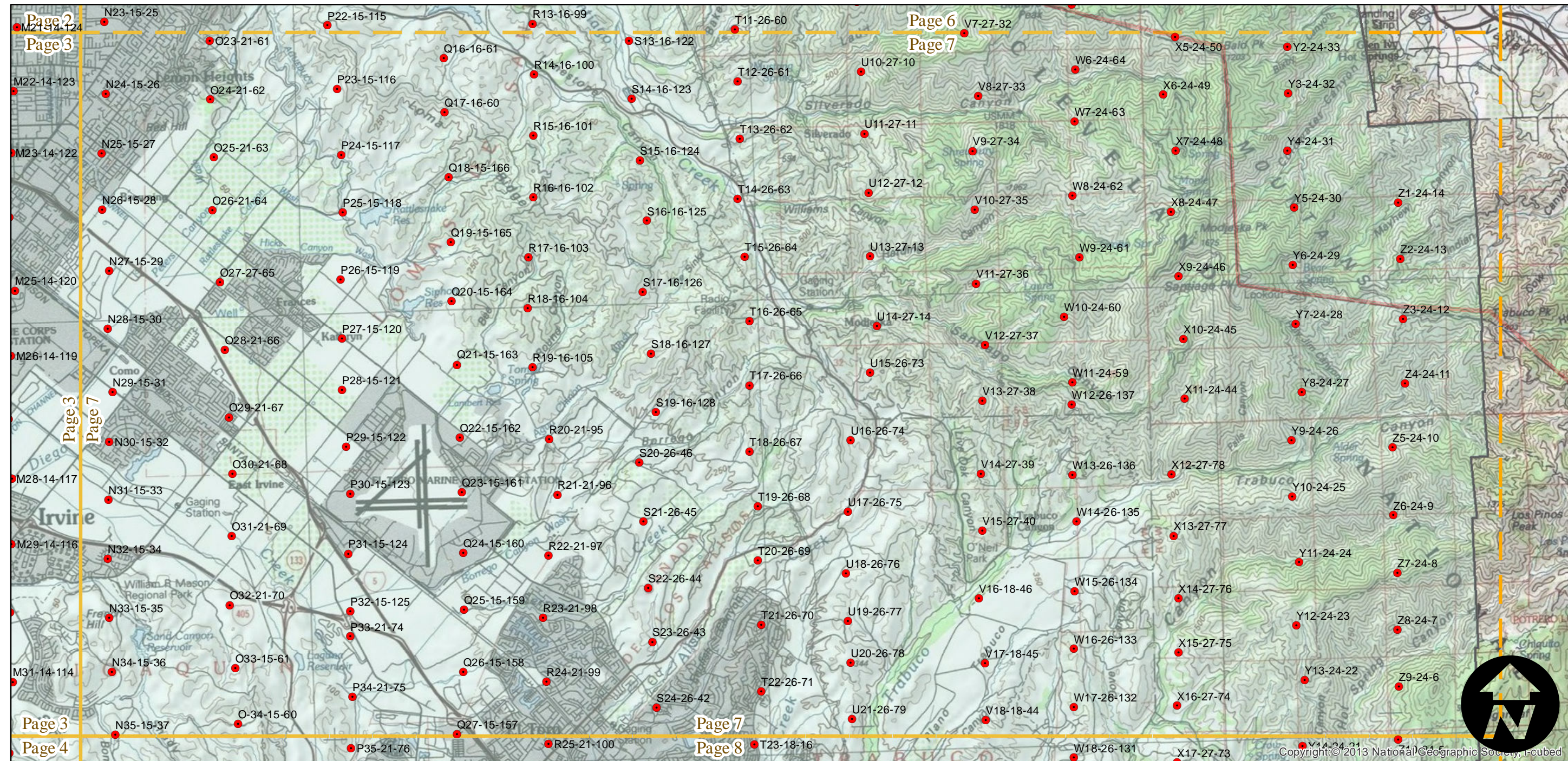
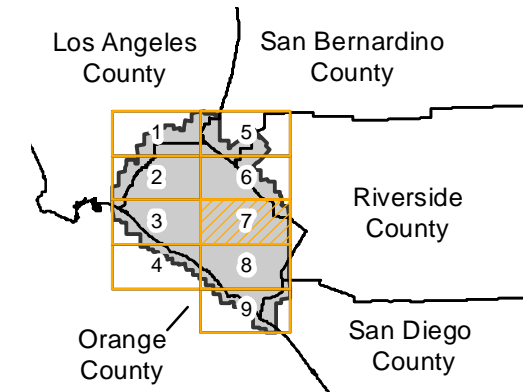
Complete Metadata:

<http://www.library.ucsb.edu/mil/aerial-photography-tools>

Note: Original 9 X 9-inch negatives are 1:14,400 and provide partial stereo coverage. Oversized pictorial imagery shown on mosaic atlas sheet (1:14,400); coastal areas (1:24,000); 7.5' quad sheets (1:31,680); 15' quad sheets (1:63,360). Index sheets for pictorial mosaic series filed in regular index collection. See original flight indexes for more information. Imagery acquired from Whittier College, January 2013

- MIL owns frame
- MIL does not own frame

FLIGHT LOCATION



0 1 2 4 Miles

Index to Aerial Photography
Page 7 of 9

Scale of this index: 1:90,000

C-11730 (1:14.4K)

Counties: Los Angeles, Orange, Riverside, San Bernardino, San Diego

Flight date(s): 08-01-1947 to 10-31-1947

Scale: 1:14,400

Overlap: 60%

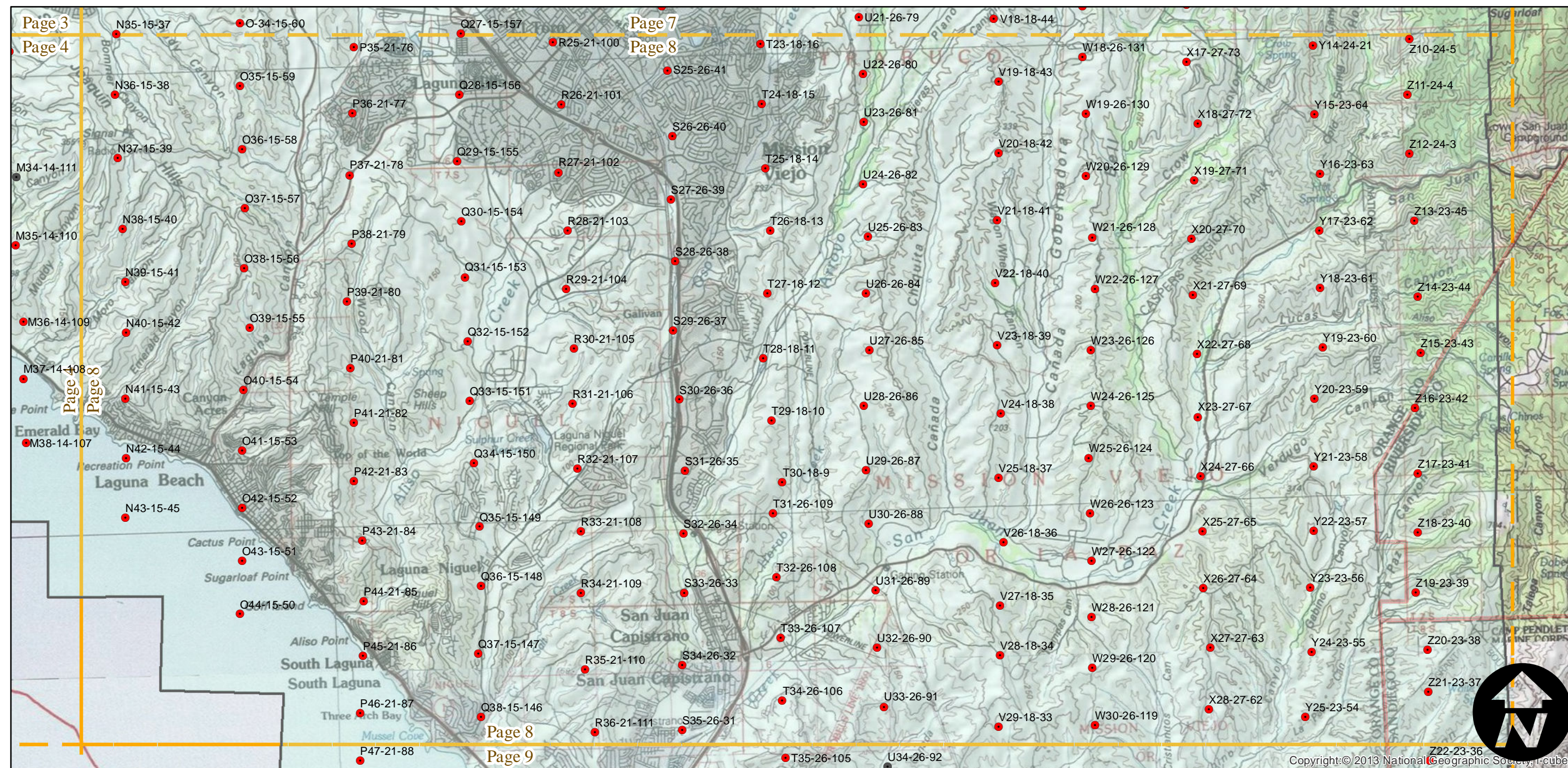
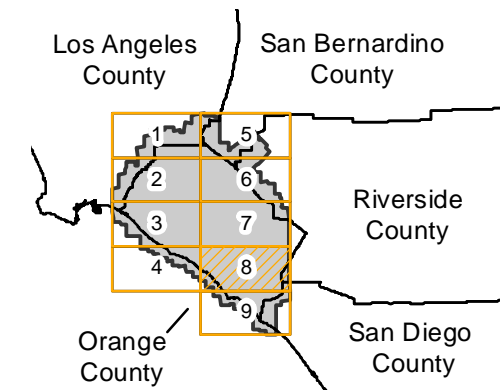
Complete Metadata:

<http://www.library.ucsb.edu/mil/aerial-photography-tools>

Note: Original 9 X 9-inch negatives are 1:14,400 and provide partial stereo coverage. Oversized pictorial imagery shown on mosaic atlas sheet (1:14,400); coastal areas (1:24,000); 7.5' quad sheets (1:31,680); 15' quad sheets (1:63,360). Index sheets for pictorial mosaic series filed in regular index collection. See original flight indexes for more information. Imagery acquired from Whittier College, January 2013

- MIL owns frame
- MIL does not own frame

FLIGHT LOCATION



0 1 2 4 Miles

Index to Aerial Photography
Page 8 of 9

Scale of this index: 1:90,000

Copyright: © 2013 National Geographic Society, i-cubed

C-11730 (1:14.4K)

Counties: Los Angeles, Orange, Riverside, San Bernardino, San Diego

Flight date(s): 08-01-1947 to 10-31-1947

Scale: 1:14,400

Overlap: 60%

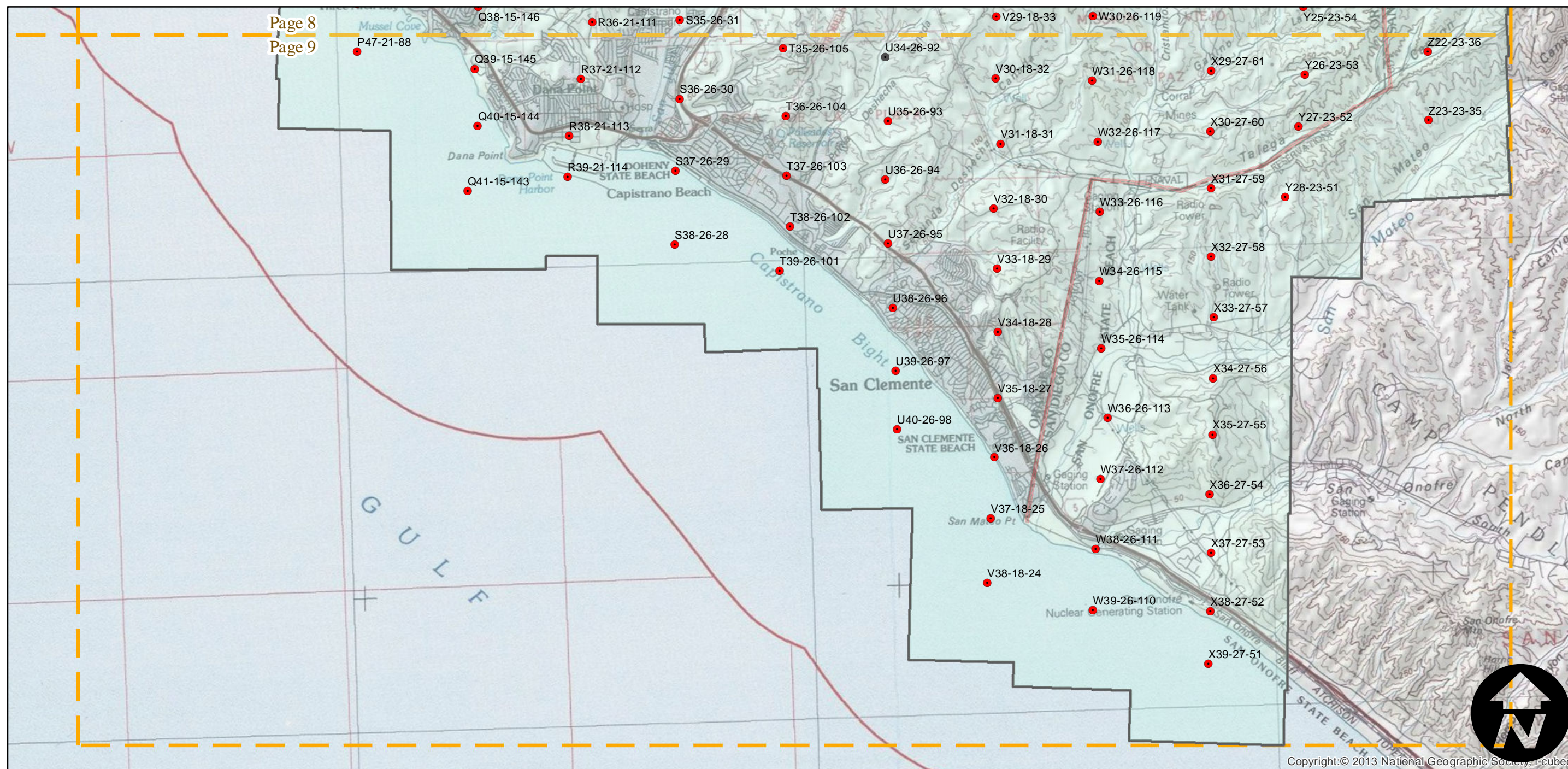
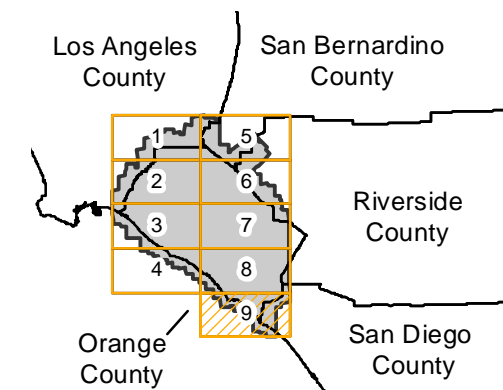
Complete Metadata:

<http://www.library.ucsb.edu/mil/aerial-photography-tools>

Note: Original 9 X 9-inch negatives are 1:14,400 and provide partial stereo coverage. Oversized pictorial imagery shown on mosaic atlas sheet (1:14,400); coastal areas (1:24,000); 7.5' quad sheets (1:31,680); 15' quad sheets (1:63,360). Index sheets for pictorial mosaic series filed in regular index collection. See original flight indexes for more information. Imagery acquired from Whittier College, January 2013

- MIL owns frame
- MIL does not own frame

FLIGHT LOCATION



Copyright: © 2013 National Geographic Society, I-cubed

0 1 2 4 Miles

Index to Aerial Photography
Page 9 of 9

Scale of this index: 1:90,000