

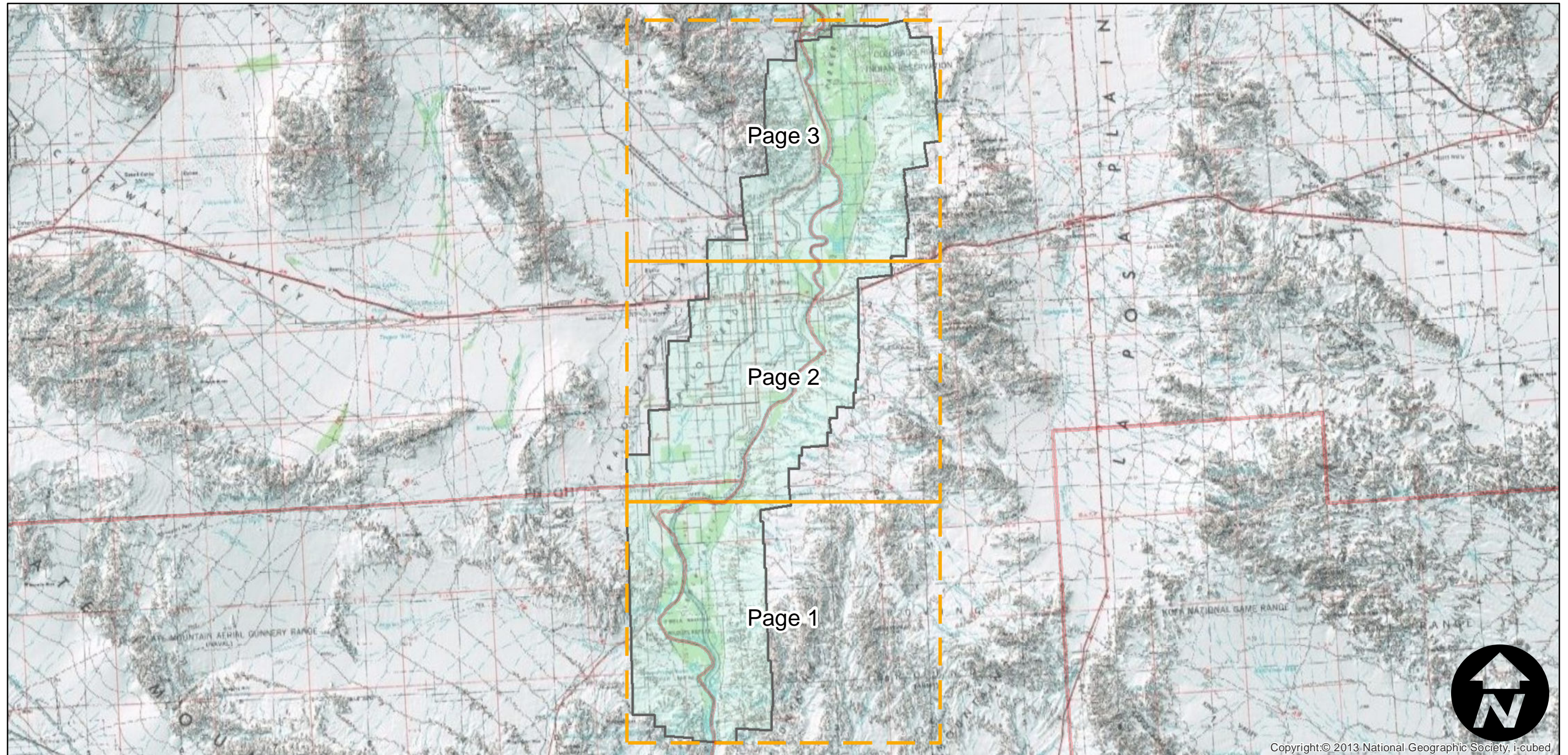
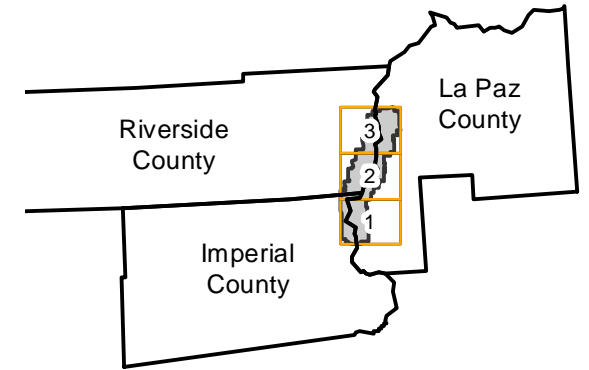
# C-1050

Counties: Imperial, Riverside (California), La Paz (Arizona)  
Flight date(s): 06-24-1930  
Scale: 1:19,560  
Overlap: 30-50%

Complete Metadata:  
<http://www.library.ucsb.edu/mil/aerial-photography-tools>

Note: Colorado River: Cibola Valley (Imperial County, CA) to Blythe (Riverside County, CA); Ehrenberg to Moon Mountain (La Paz County, AZ). Transparencies acquired 1986 were made from original nitrate film. Recorded in FAS log book as "Boulder Canyon Project". Prints and copy negatives acquired from Whittier College, January 2013

## FLIGHT LOCATION



0 5 10 20 Miles

Index to Aerial Photography  
Page Key

Scale of this index: 1:435,000

Copyright:© 2013 National Geographic Society, i-cubed

# C-1050

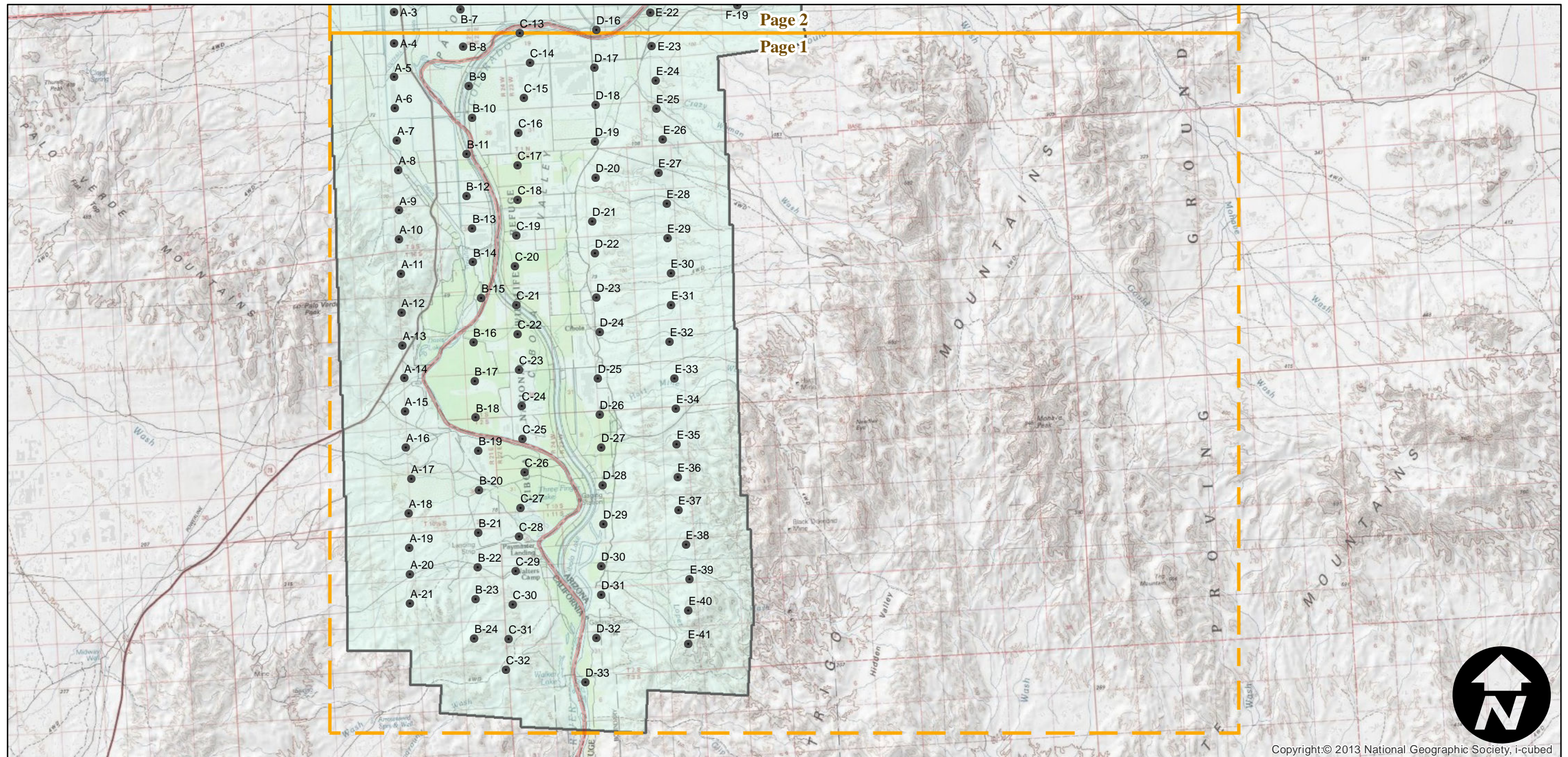
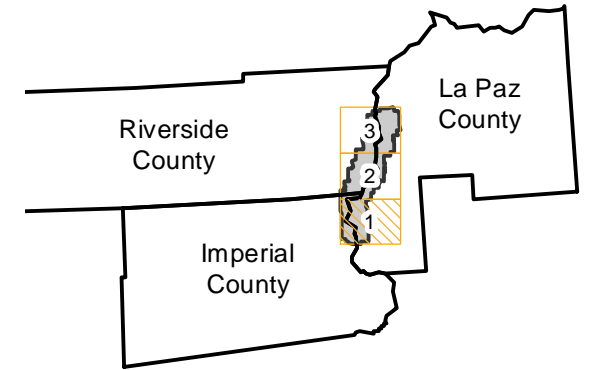
Counties: Imperial, Riverside (California), La Paz (Arizona)  
Flight date(s): 06-24-1930  
Scale: 1:19,560  
Overlap: 30-50%

Complete Metadata:  
<http://www.library.ucsb.edu/mil/aerial-photography-tools>

Note: Colorado River: Cibola Valley (Imperial County, CA) to Blythe (Riverside County, CA); Ehrenberg to Moon Mountain (La Paz County, AZ). Transparencies acquired 1986 were made from original nitrate film. Recorded in FAS log book as "Boulder Canyon Project". Prints and copy negatives acquired from Whittier College, January 2013

- MIL owns frame
- MIL does not own frame

## FLIGHT LOCATION



0 2.5 5 10 Miles

Index to Aerial Photography  
Page 1 of 3

Scale of this index: 1:150,000



Copyright © 2013 National Geographic Society, i-cubed

# C-1050

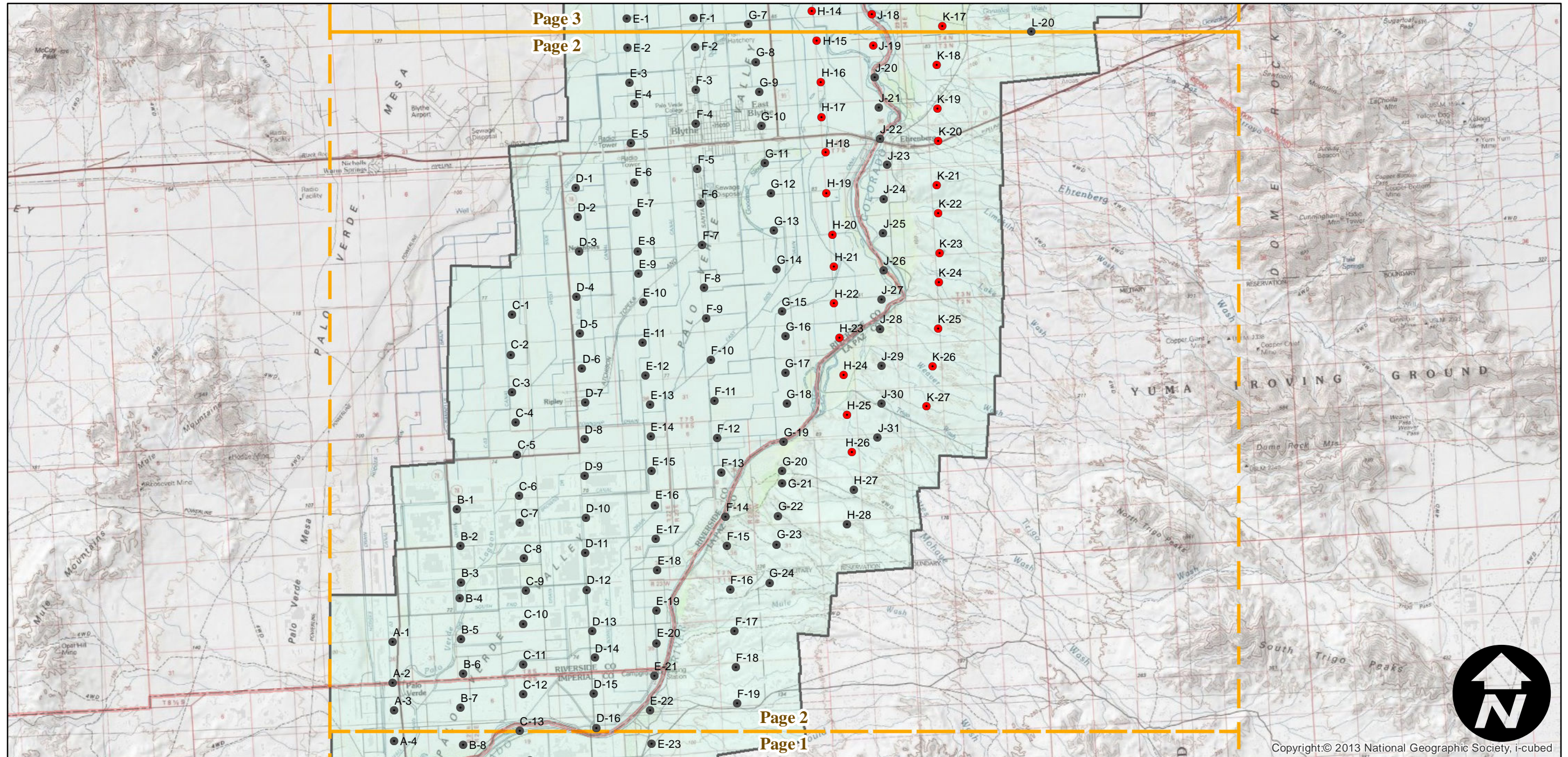
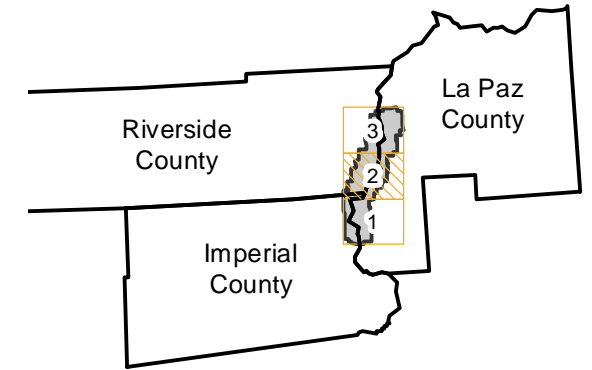
Counties: Imperial, Riverside (California), La Paz (Arizona)  
Flight date(s): 06-24-1930  
Scale: 1:19,560  
Overlap: 30-50%

Complete Metadata:  
<http://www.library.ucsb.edu/mil/aerial-photography-tools>

Note: Colorado River: Cibola Valley (Imperial County, CA) to Blythe (Riverside County, CA); Ehrenberg to Moon Mountain (La Paz County, AZ). Transparencies acquired 1986 were made from original nitrate film. Recorded in FAS log book as "Boulder Canyon Project". Prints and copy negatives acquired from Whittier College, January 2013

- MIL owns frame
- MIL does not own frame

## FLIGHT LOCATION



0 2.5 5 10 Miles

Index to Aerial Photography  
Page 2 of 3

Scale of this index: 1:150,000

Copyright © 2013 National Geographic Society, i-cubed

# C-1050

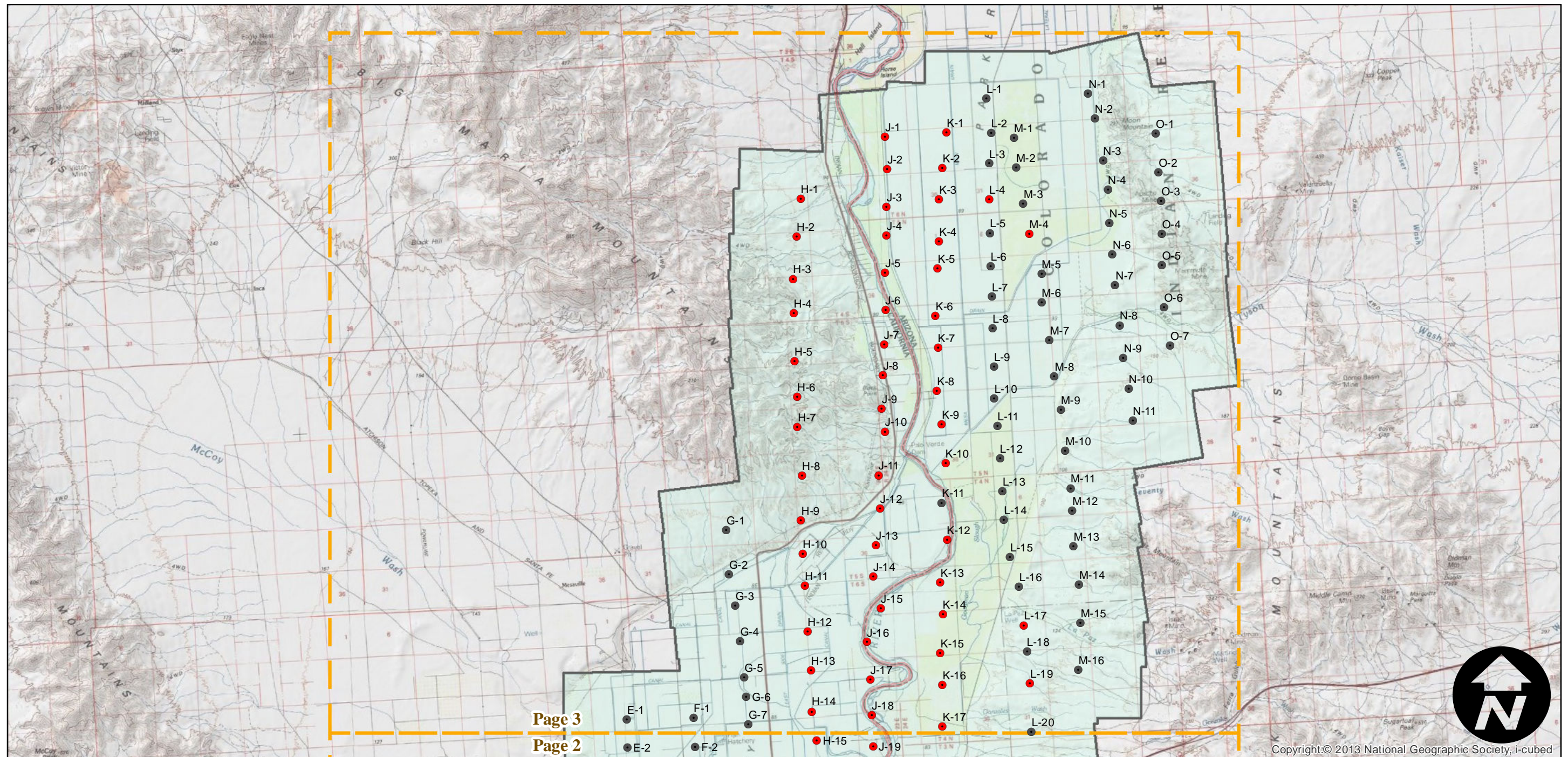
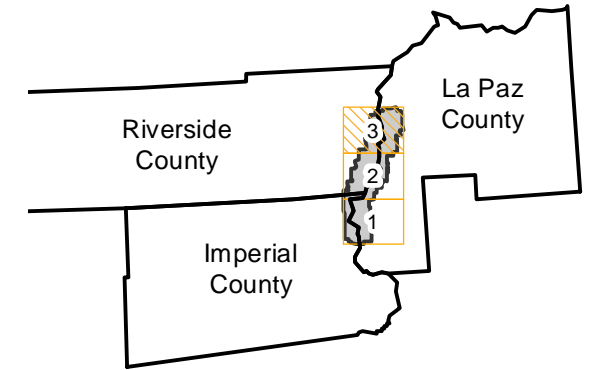
Counties: Imperial, Riverside (California), La Paz (Arizona)  
Flight date(s): 06-24-1930  
Scale: 1:19,560  
Overlap: 30-50%

Complete Metadata:  
<http://www.library.ucsb.edu/mil/aerial-photography-tools>

Note: Colorado River: Cibola Valley (Imperial County, CA) to Blythe (Riverside County, CA); Ehrenberg to Moon Mountain (La Paz County, AZ). Transparencies acquired 1986 were made from original nitrate film. Recorded in FAS log book as "Boulder Canyon Project". Prints and copy negatives acquired from Whittier College, January 2013

- MIL owns frame
- MIL does not own frame

## FLIGHT LOCATION



0 2.5 5 10 Miles

Index to Aerial Photography  
Page 3 of 3

Scale of this index: 1:150,000