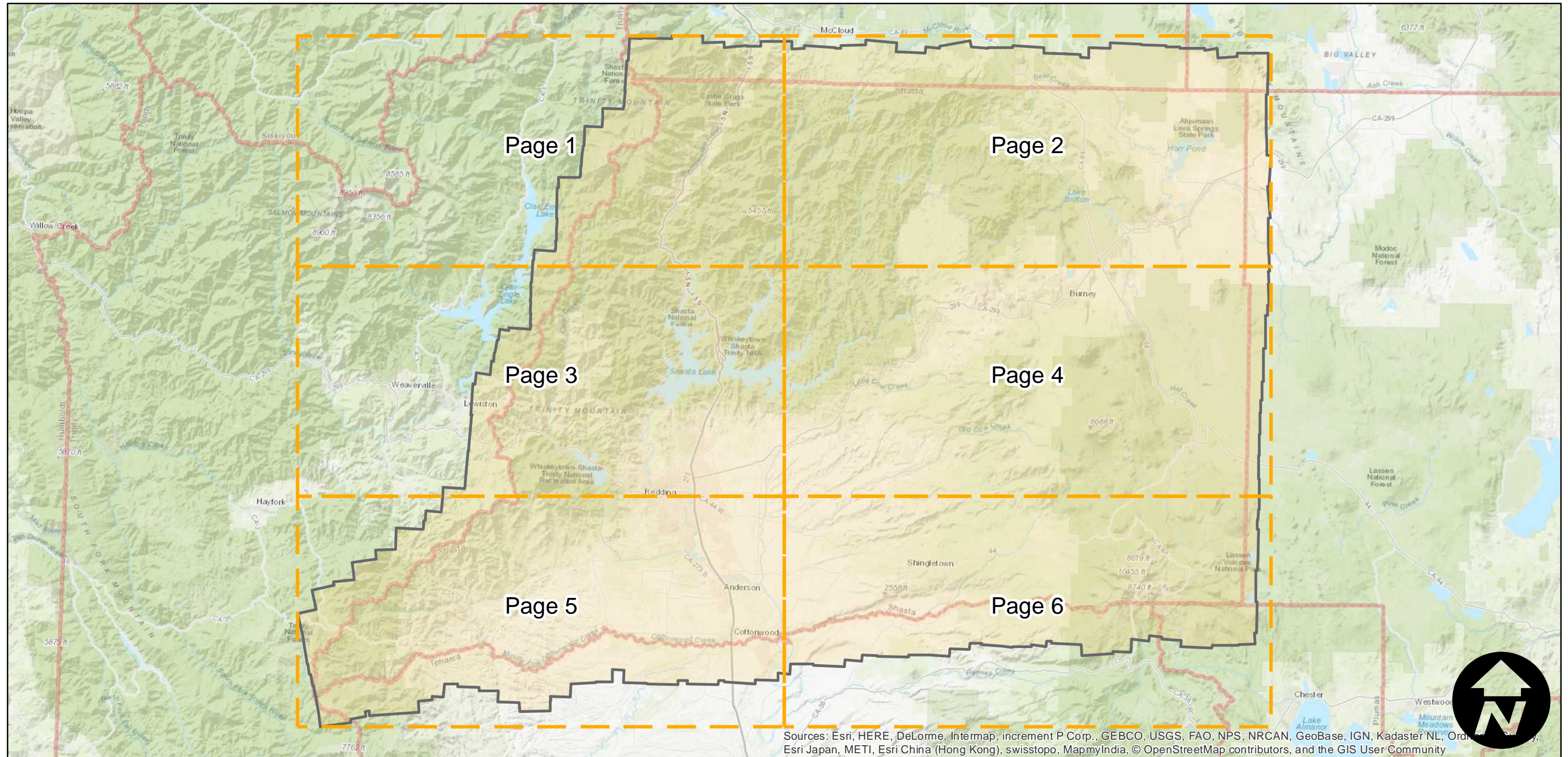
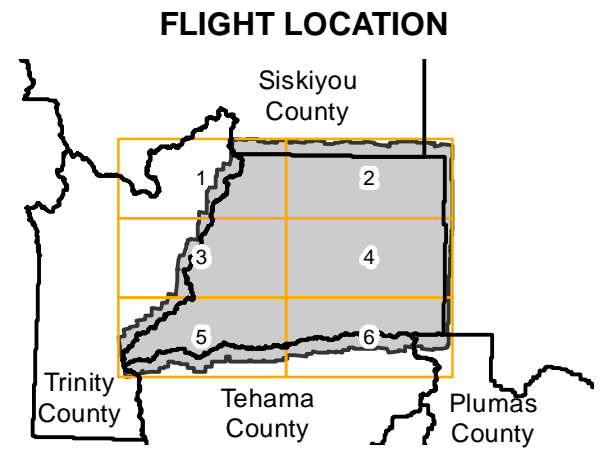


BUY-1952

Counties: Shasta, Trinity, Siskiyou, Plumas, Tehama
Flight date(s): 07-14-1952 to 08-19-1952
Scale: 1:20,000
Overlap: 60%

Note: Shasta County. Coverage extends into surrounding counties. Frames in eastern portion of county are not held by the UCSB Library.

Complete Metadata:
<http://www.library.ucsb.edu/map-imagery-lab/aerial-photography-information>



Sources: Esri, HERE, DeLorme, Intermap, increment P Corp., GEBCO, USGS, FAO, NPS, NRCAN, GeoBase, IGN, Kadaster NL, Ordnance Survey, Esri Japan, METI, Esri China (Hong Kong), swisstopo, MapmyIndia, © OpenStreetMap contributors, and the GIS User Community

0 10 20 40 Miles

Index to Aerial Photography
Page Key

Scale of this index: 1:650,000

BUY-1952

Counties: Shasta, Trinity, Siskiyou, Plumas, Tehama

Flight date(s): 07-14-1952 to 08-19-1952

Scale: 1:20,000

Overlap: 60%

Complete Metadata:

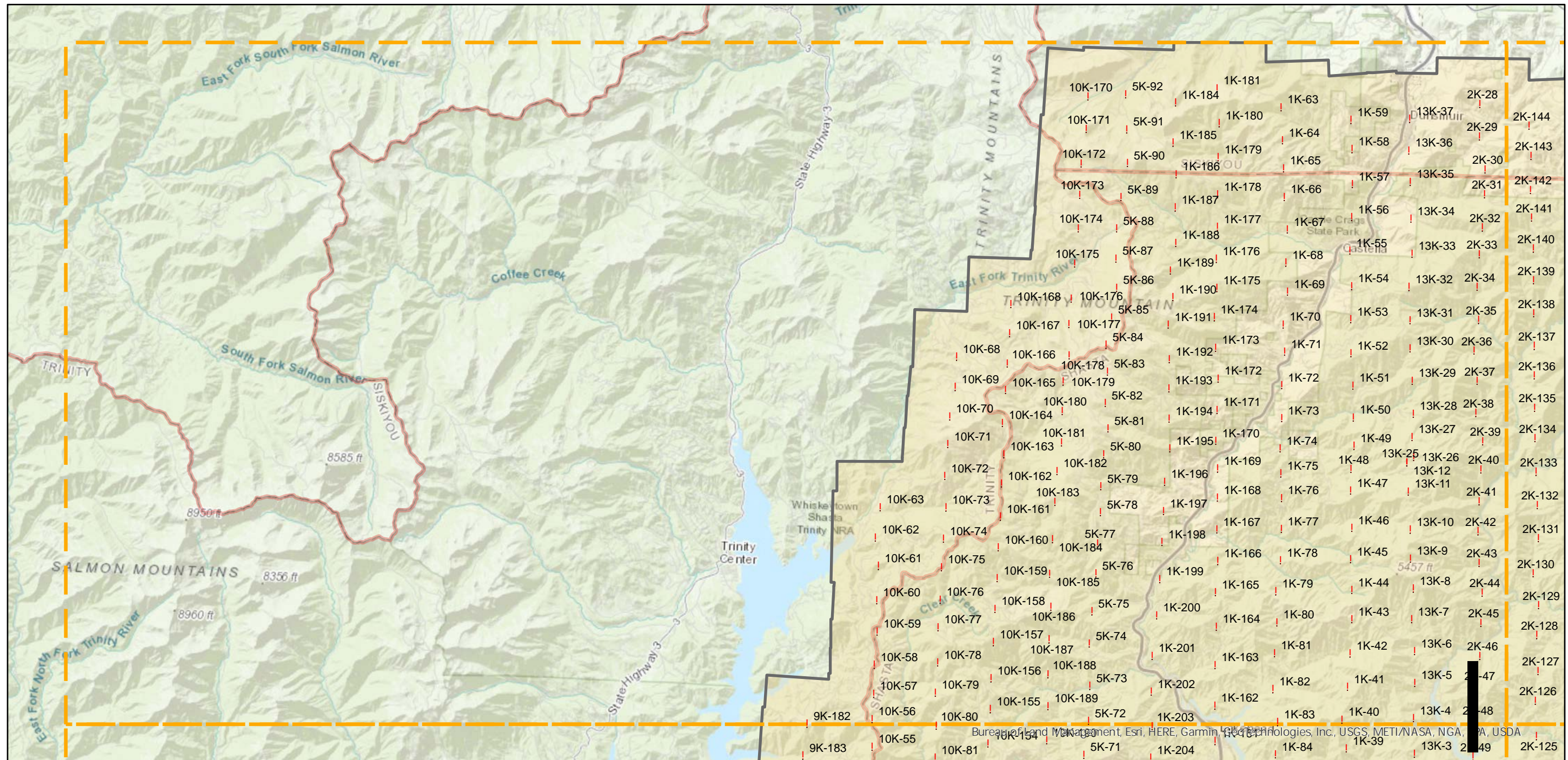
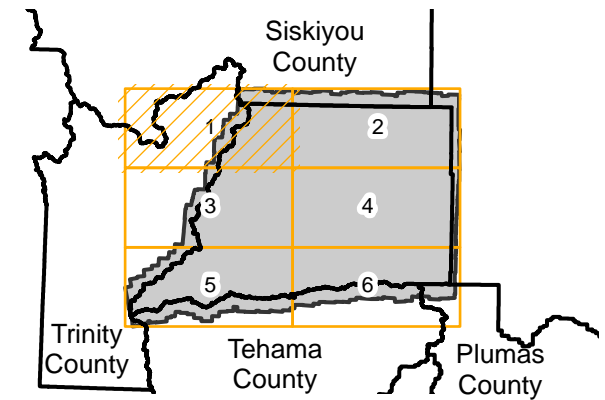
<http://www.library.ucsb.edu/map-imagery-lab/aerial-photography-information>

Note: Shasta County. Coverage extends into surrounding counties. Frames in eastern portion of county are not held by the UCSB Library.

! MIL owns frame

! MIL does not own frame

FLIGHT LOCATION



BUY-1952

Counties: Shasta, Trinity, Siskiyou, Plumas, Tehama

Flight date(s): 07-14-1952 to 08-19-1952

Scale: 1:20,000

Overlap: 60%

Complete Metadata:

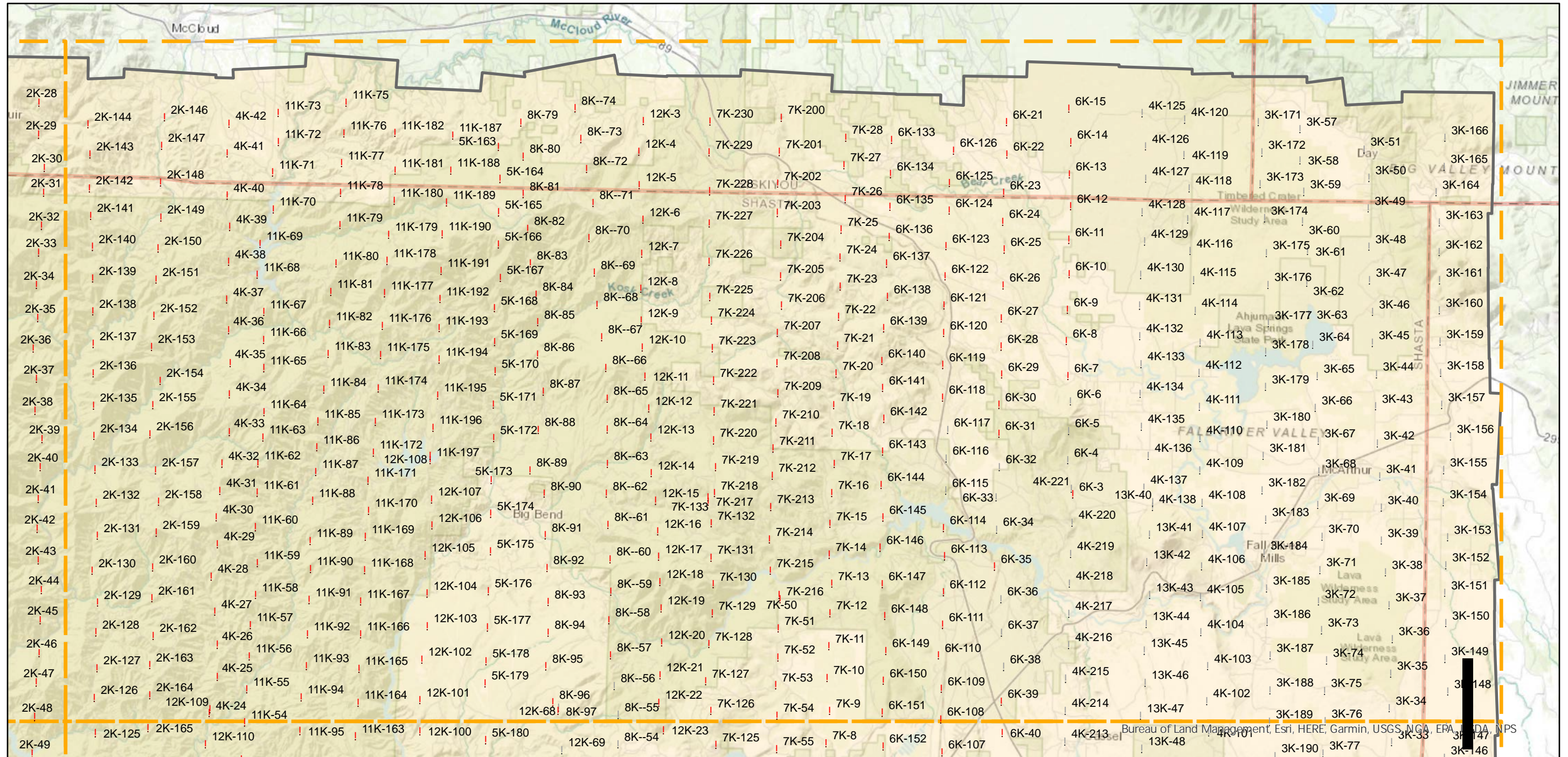
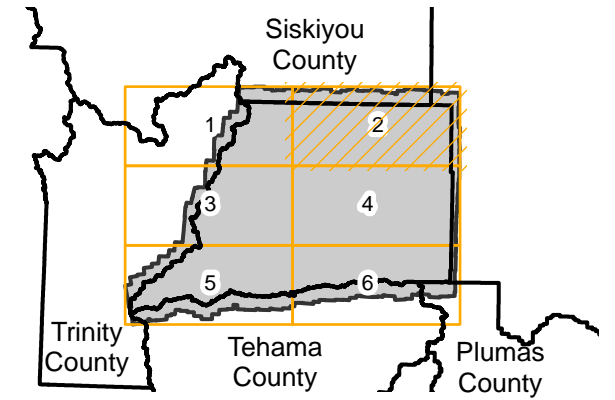
<http://www.library.ucsb.edu/map-imagery-lab/aerial-photography-information>

Note: Shasta County. Coverage extends into surrounding counties. Frames in eastern portion of county are not held by the UCSB Library.

! MIL owns frame

! MIL does not own frame

FLIGHT LOCATION



0 4 8 16 Miles

Index to Aerial Photography
Page 2 of 6

Scale of this index: 1:220,000

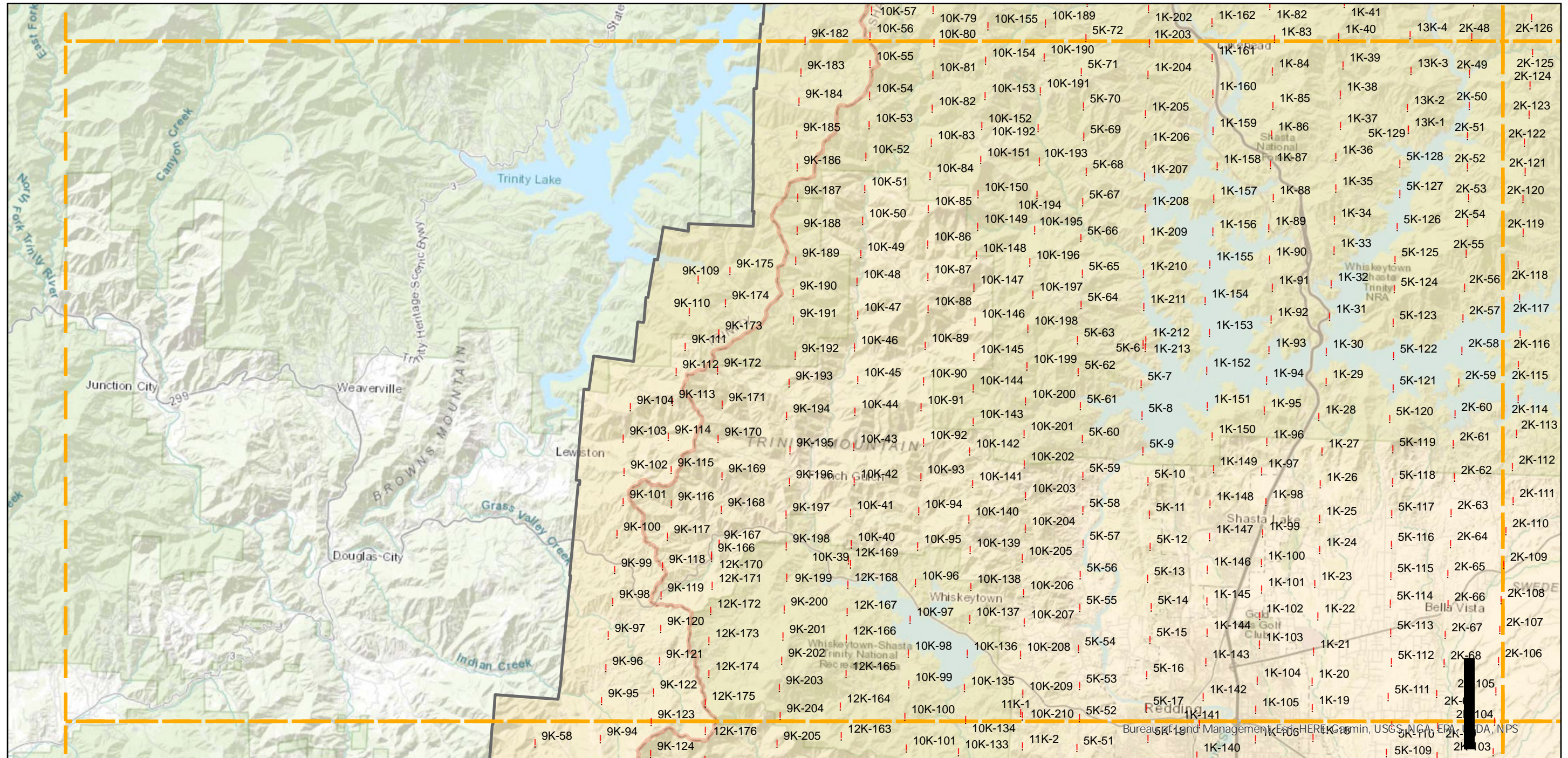
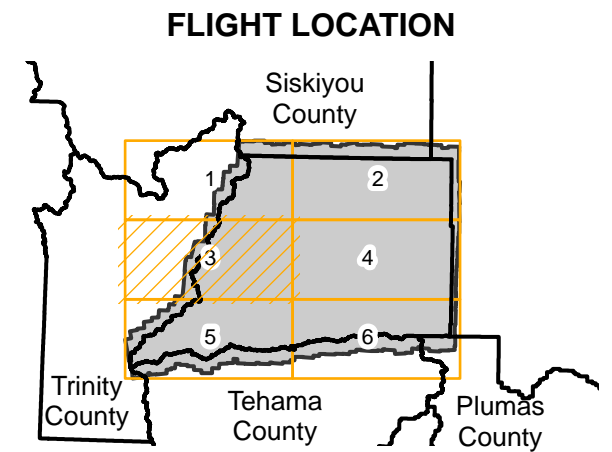
BUY-1952

Counties: Shasta, Trinity, Siskiyou, Plumas, Tehama
 Flight date(s): 07-14-1952 to 08-19-1952
 Scale: 1:20,000
 Overlap: 60%

Complete Metadata:
<http://www.library.ucsb.edu/map-imagery-lab/aerial-photography-information>

Note: Shasta County. Coverage extends into surrounding counties. Frames in eastern portion of county are not held by the UCSB Library.

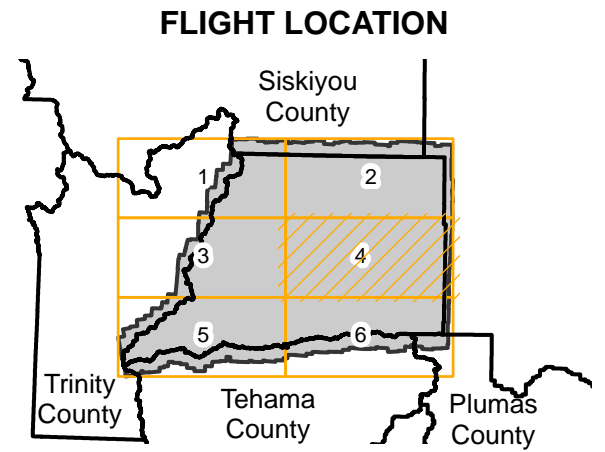
- ! MIL owns frame
- ! MIL does not own frame



BUY-1952

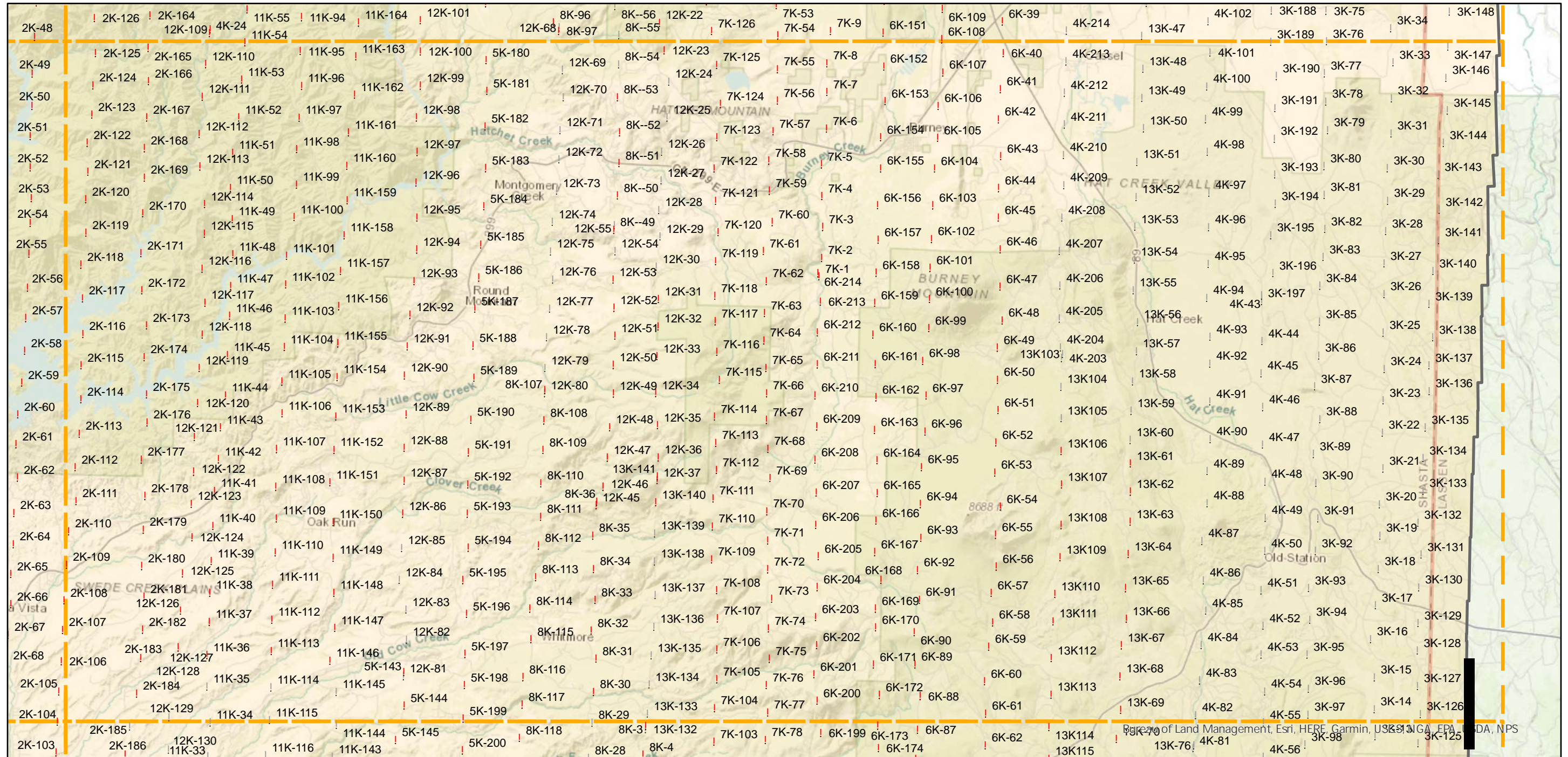
Counties: Shasta, Trinity, Siskiyou, Plumas, Tehama
 Flight date(s): 07-14-1952 to 08-19-1952
 Scale: 1:20,000
 Overlap: 60%

Note: Shasta County. Coverage extends into surrounding counties. Frames in eastern portion of county are not held by the UCSB Library.



Complete Metadata:
<http://www.library.ucsb.edu/map-imagery-lab/aerial-photography-information>

- ! MIL owns frame
- ! MIL does not own frame



0 4 8 16 Miles

Index to Aerial Photography
 Page 4 of 6

Scale of this index: 1:220,000

BUY-1952

Counties: Shasta, Trinity, Siskiyou, Plumas, Tehama

Flight date(s): 07-14-1952 to 08-19-1952

Scale: 1:20,000

Overlap: 60%

Complete Metadata:

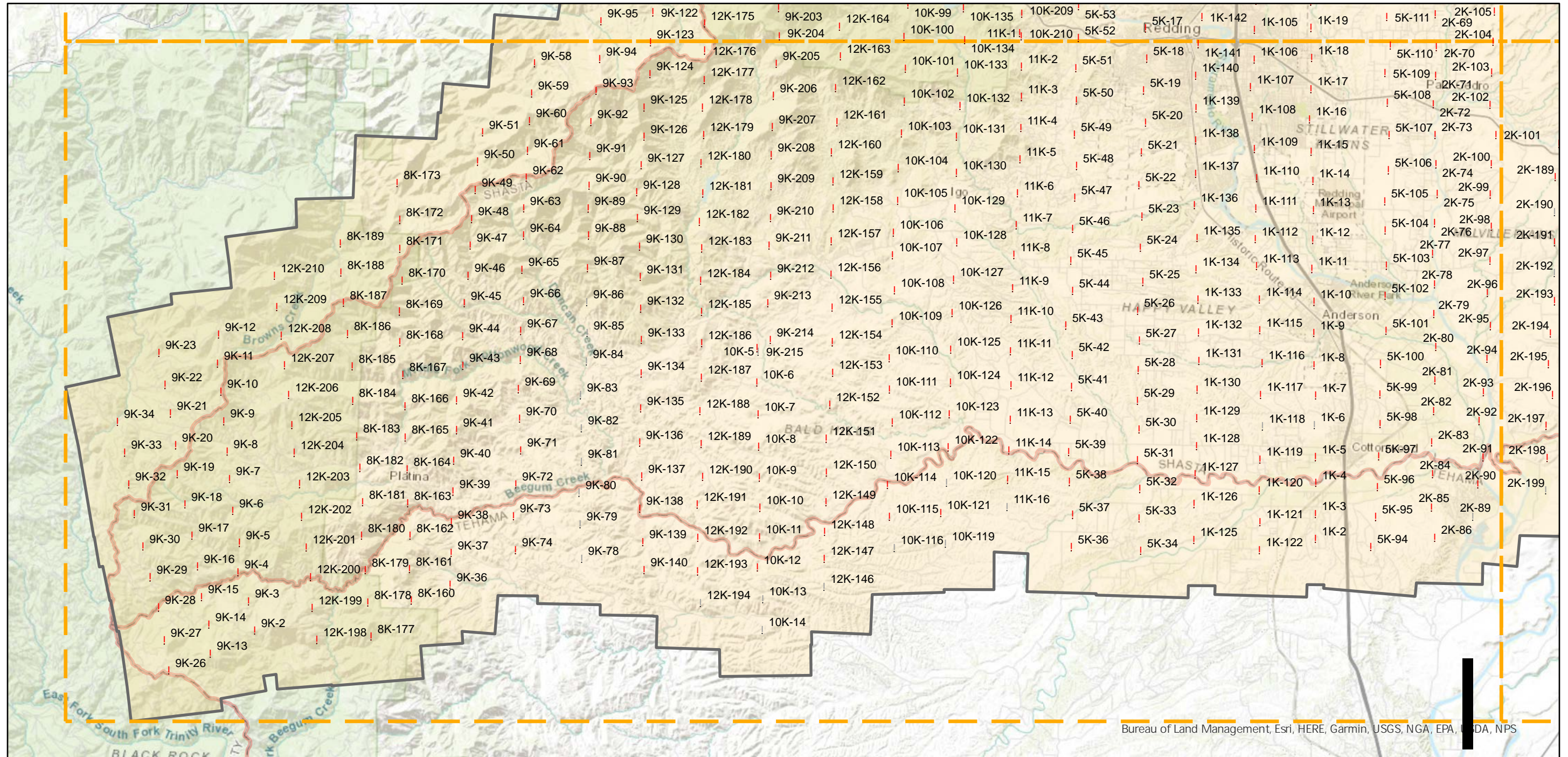
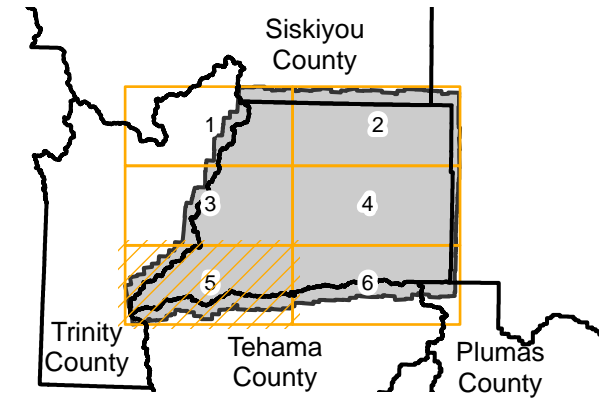
<http://www.library.ucsb.edu/map-imagery-lab/aerial-photography-information>

Note: Shasta County. Coverage extends into surrounding counties. Frames in eastern portion of county are not held by the UCSB Library.

! MIL owns frame

! MIL does not own frame

FLIGHT LOCATION



Bureau of Land Management, Esri, HERE, Garmin, USGS, NGA, EPA, NOAA, NPS



BUY-1952

Counties: Shasta, Trinity, Siskiyou, Plumas, Tehama

Flight date(s): 07-14-1952 to 08-19-1952

Scale: 1:20,000

Overlap: 60%

Complete Metadata:

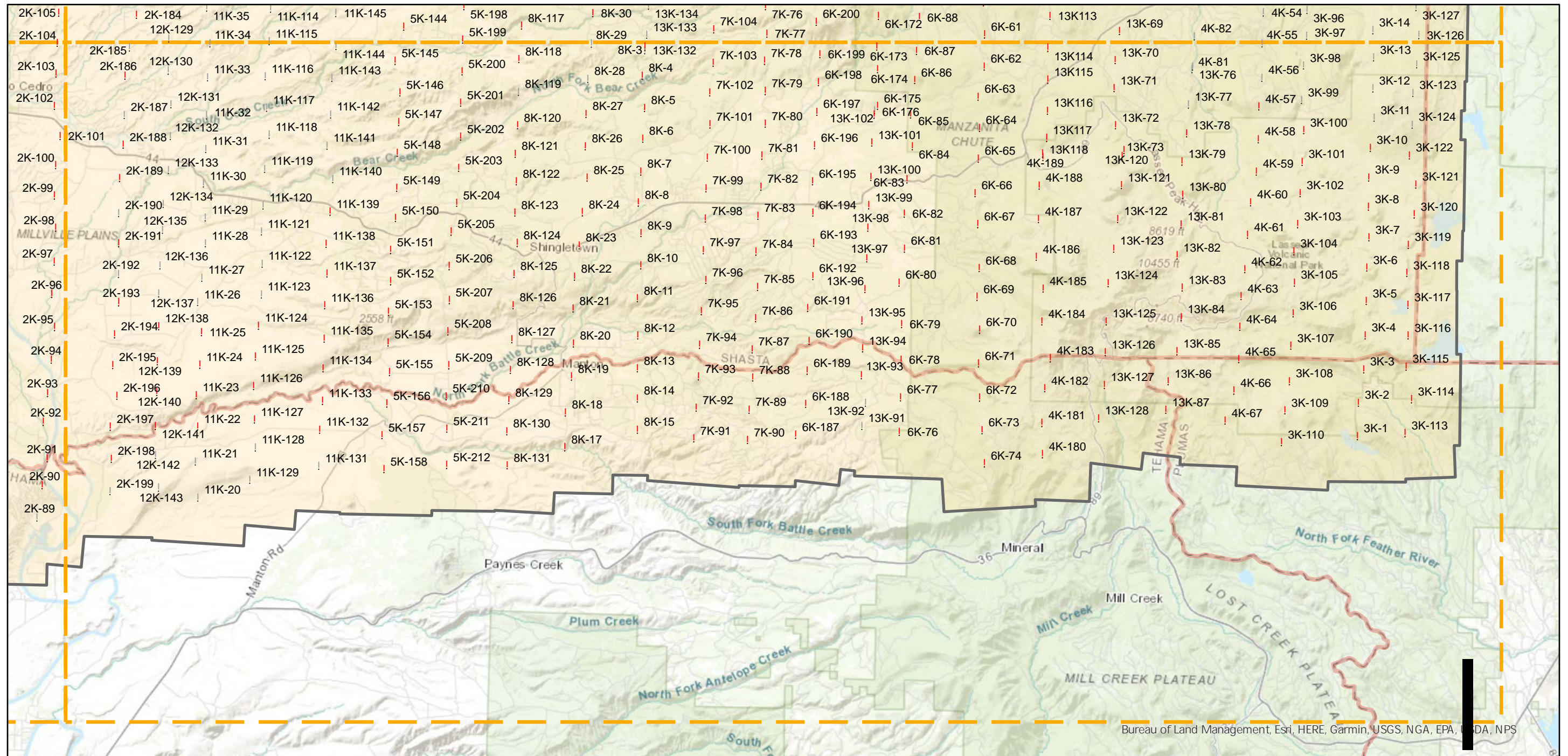
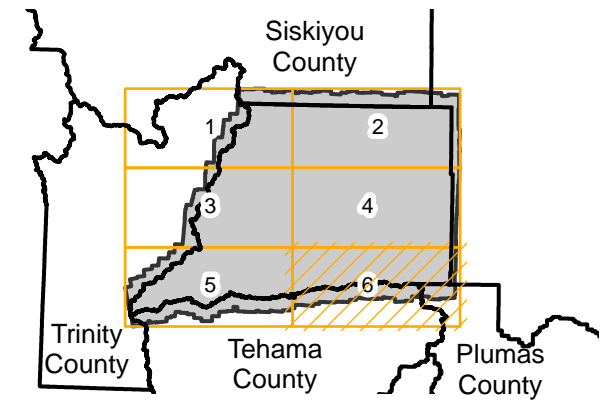
<http://www.library.ucsb.edu/map-imagery-lab/aerial-photography-information>

Note: Shasta County. Coverage extends into surrounding counties. Frames in eastern portion of county are not held by the UCSB Library.

! MIL owns frame

! MIL does not own frame

FLIGHT LOCATION



Bureau of Land Management, Esri, HERE, Garmin, USGS, NGA, EPA, NOAA, NPS

0 4 8 16 Miles

Index to Aerial Photography
Page 6 of 6

Scale of this index: 1:220,000