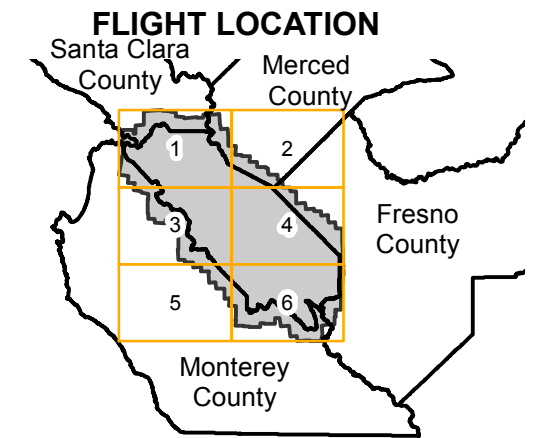


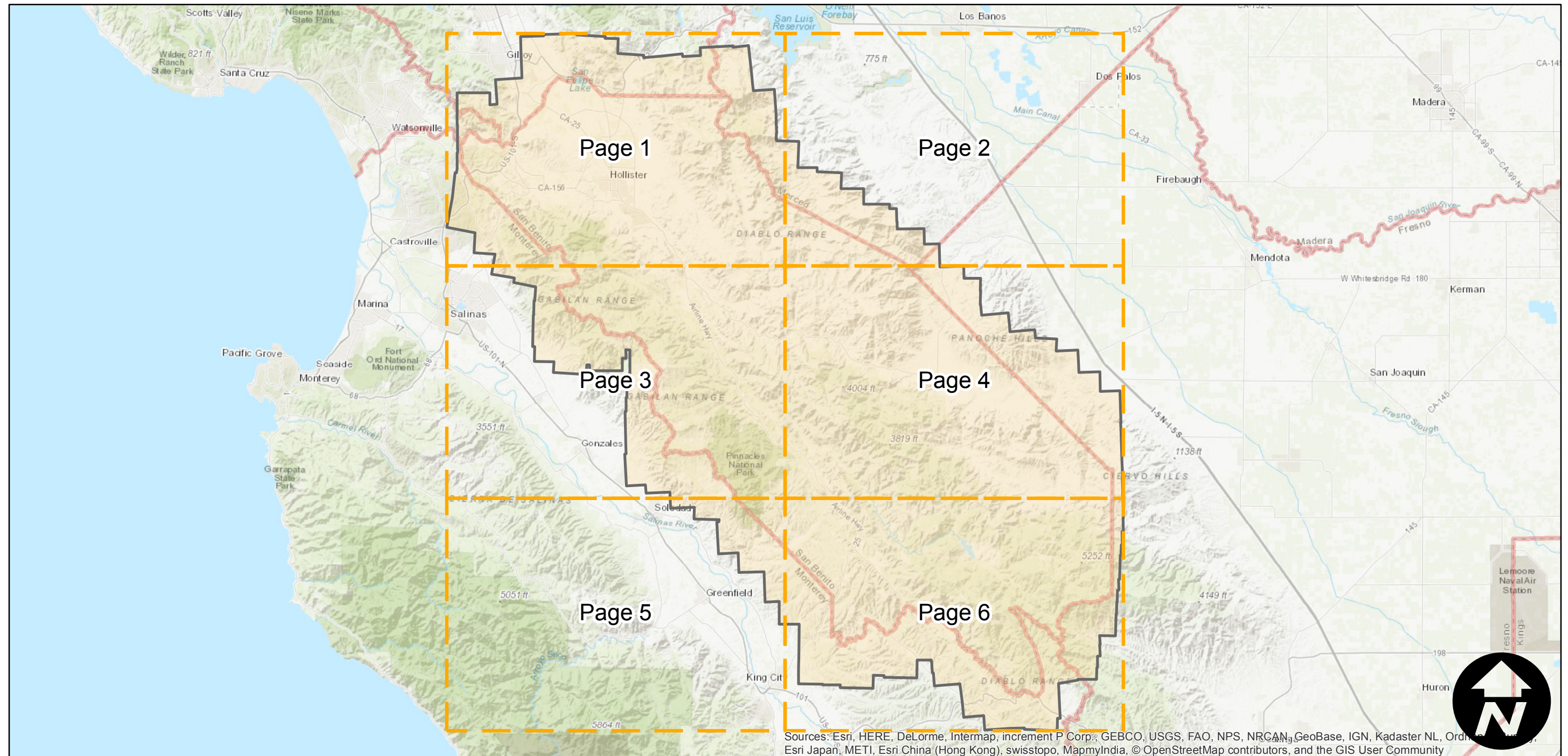
BUX-1958

Counties: San Benito, Monterey, Fresno, Merced, Santa Clara
Flight date(s): 05-20-1959 to 07-12-1959
Scale: 1:20,000
Overlap: 60%

Note: Complete coverage of San Benito county. Coverage extends into surrounding counties.



Complete Metadata:
<http://www.library.ucsb.edu/map-imagery-lab/aerial-photography-information>



Sources: Esri, HERE, DeLorme, Intermap, increment P Corp., GEBCO, USGS, FAO, NPS, NRCAN, GeoBase, IGN, Kadaster NL, Ordnance Survey, Esri Japan, METI, Esri China (Hong Kong), swisstopo, MapmyIndia, © OpenStreetMap contributors, and the GIS User Community

0 10 20 40 Miles

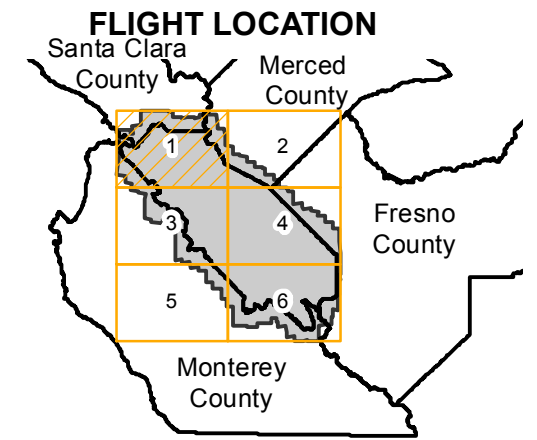
Index to Aerial Photography
Page Key

Scale of this index: 1:580,000

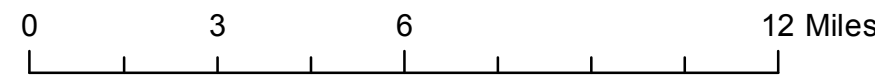
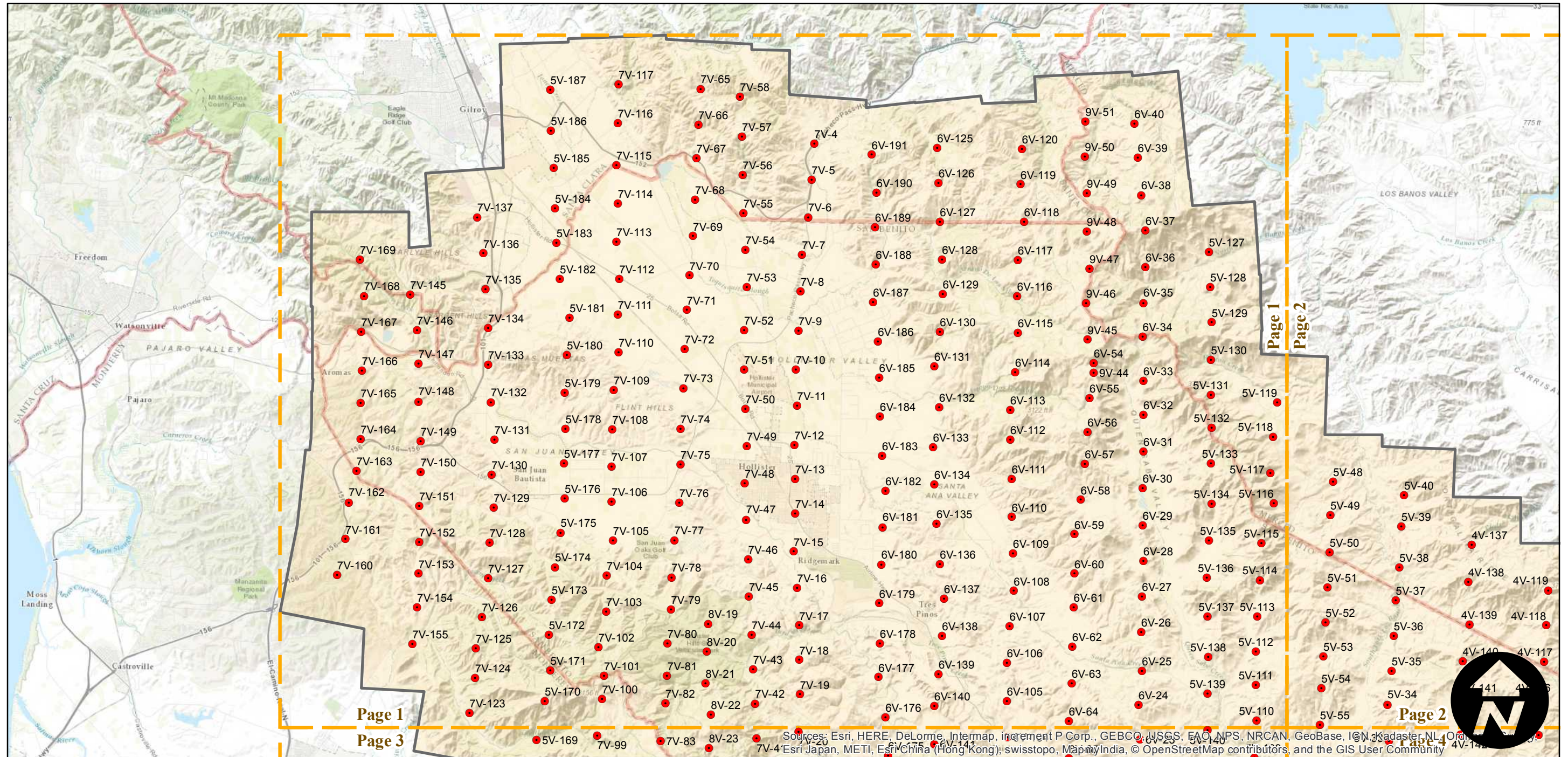
BUX-1958

Counties: San Benito, Monterey, Fresno, Merced, Santa Clara
Flight date(s): 05-20-1959 to 07-12-1959
Scale: 1:20,000
Overlap: 60%

Note: Complete coverage of San Benito county. Coverage extends into surrounding counties.



Complete Metadata:
<http://www.library.ucsb.edu/map-imagery-lab/aerial-photography-information>



Index to Aerial Photography
Page 1 of 6

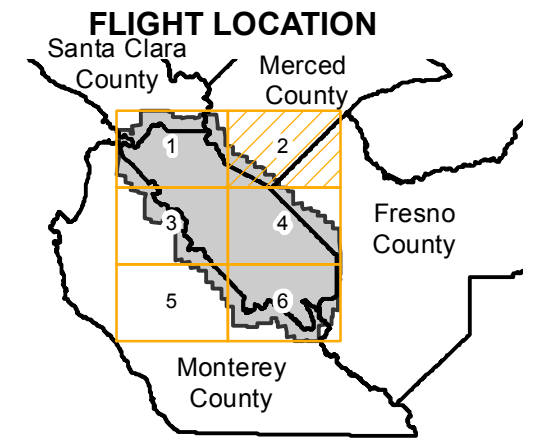
Scale of this index: 1:195,000

Sources: Esri, HERE, DeLorme, Intermap, increment P Corp., GEBCO, JGS, FAO, NPS, NRCAN, GeoBase, IGN, Kadaster NL, Ordnance Survey, Esri Japan, METI, Esri China (Hong Kong), swisstopo, MapmyIndia, © OpenStreetMap contributors, and the GIS User Community

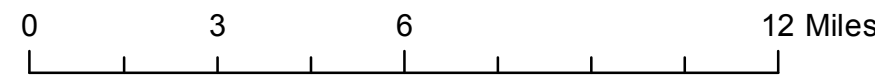
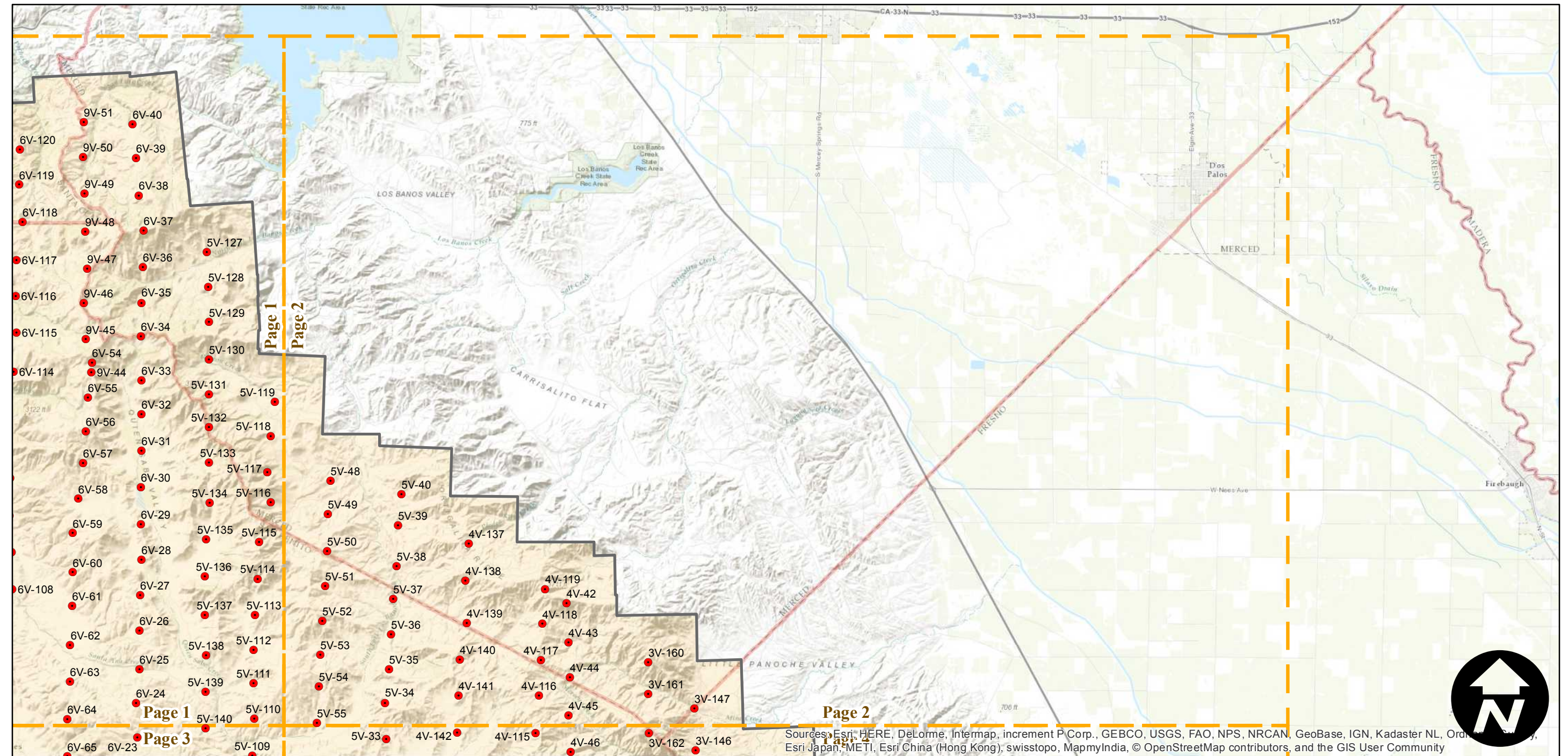
BUX-1958

Counties: San Benito, Monterey, Fresno, Merced, Santa Clara
Flight date(s): 05-20-1959 to 07-12-1959
Scale: 1:20,000
Overlap: 60%

Note: Complete coverage of San Benito county. Coverage extends into surrounding counties.



Complete Metadata:
<http://www.library.ucsb.edu/map-imagery-lab/aerial-photography-information>

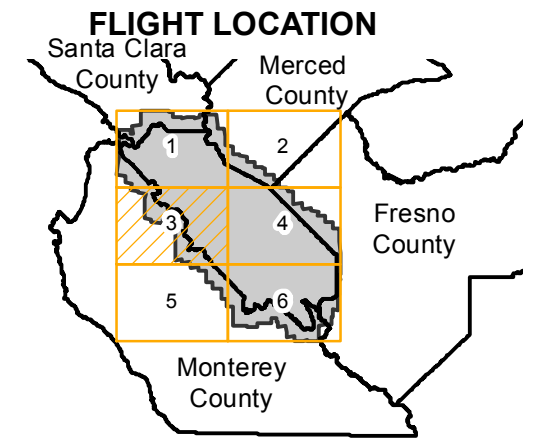


Sources: Esri, HERE, DeLorme, Intermap, increment P Corp., GEBCO, USGS, FAO, NPS, NRCAN, GeoBase, IGN, Kadaster NL, Ordnance Survey, Esri Japan, METI, Esri China (Hong Kong), swisstopo, MapmyIndia, © OpenStreetMap contributors, and the GIS User Community

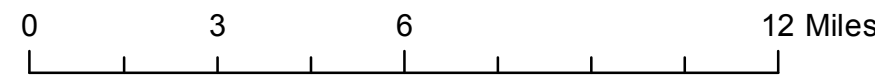
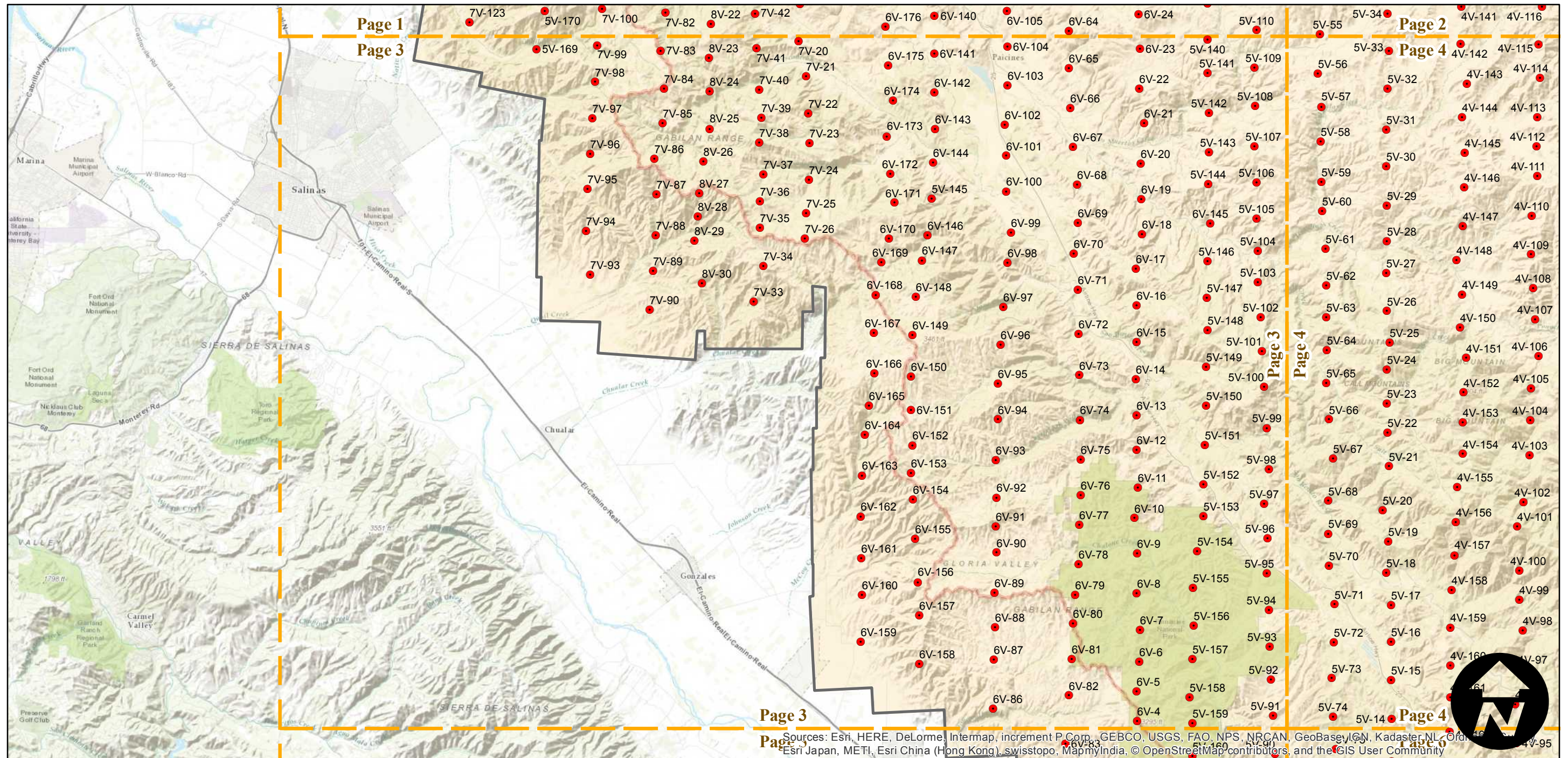
BUX-1958

Counties: San Benito, Monterey, Fresno, Merced, Santa Clara
 Flight date(s): 05-20-1959 to 07-12-1959
 Scale: 1:20,000
 Overlap: 60%

Note: Complete coverage of San Benito county. Coverage extends into surrounding counties.



Complete Metadata:
<http://www.library.ucsb.edu/map-imagery-lab/aerial-photography-information>

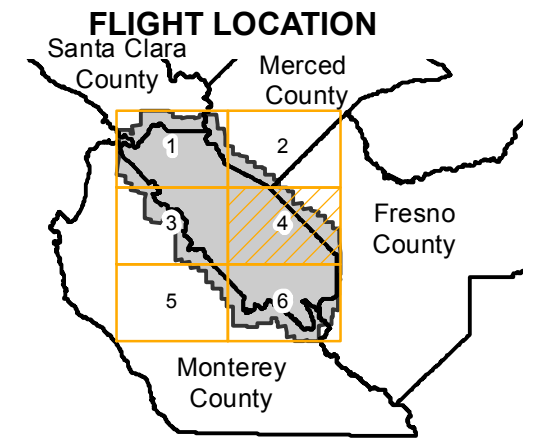


Sources: Esri, HERE, DeLorme, Intermap, increment P Corp., GEBCO, USGS, FAO, NPS, NRCAN, GeoBase, IGN, Kadaster NL, Ordnance Survey, Esri Japan, METI, Esri China (Hong Kong), swisstopo, MapmyIndia, © OpenStreetMap contributors, and the GIS User Community

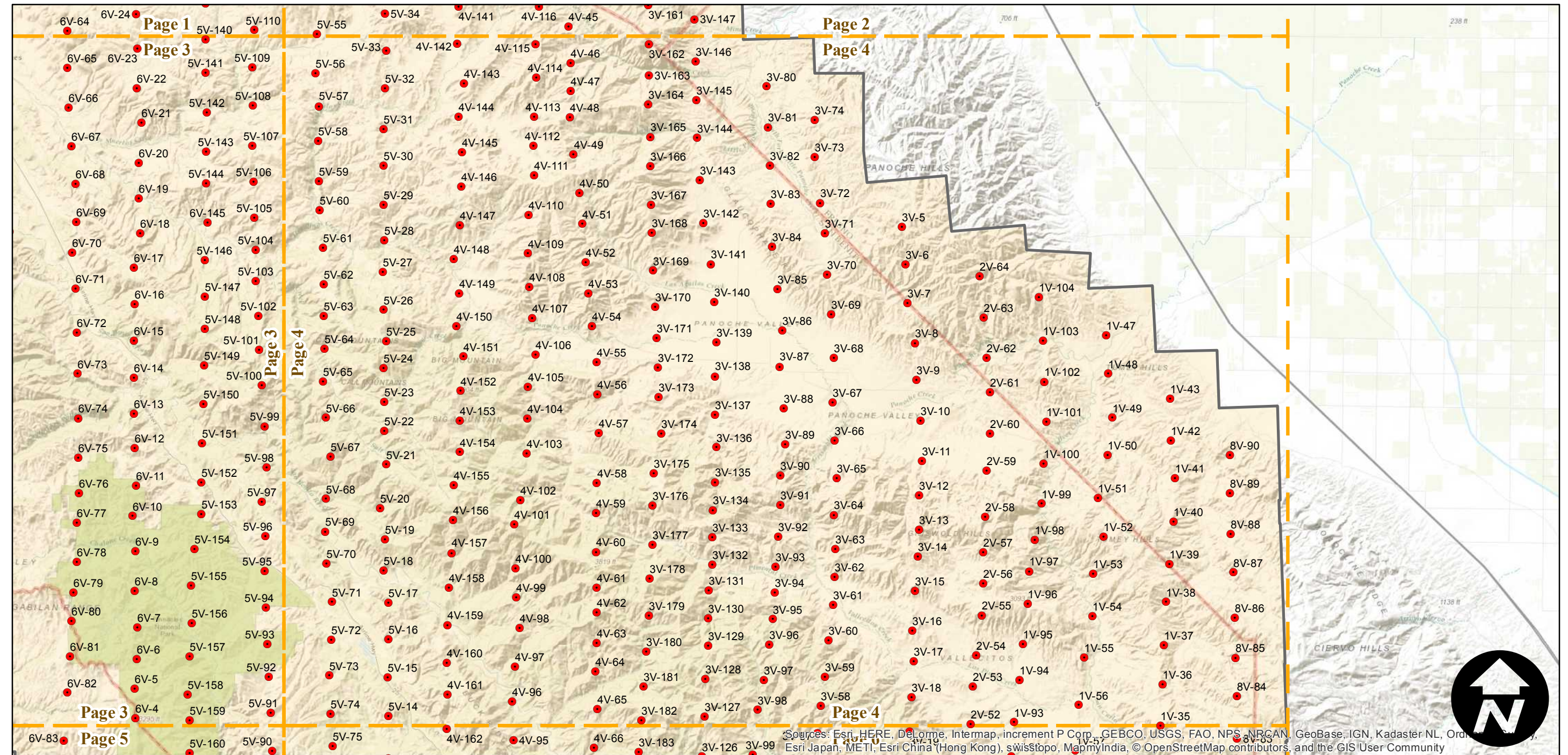
BUX-1958

Counties: San Benito, Monterey, Fresno, Merced, Santa Clara
Flight date(s): 05-20-1959 to 07-12-1959
Scale: 1:20,000
Overlap: 60%

Note: Complete coverage of San Benito county. Coverage extends into surrounding counties.



Complete Metadata:
<http://www.library.ucsb.edu/map-imagery-lab/aerial-photography-information>



0 3 6 12 Miles

Index to Aerial Photography
Page 4 of 6

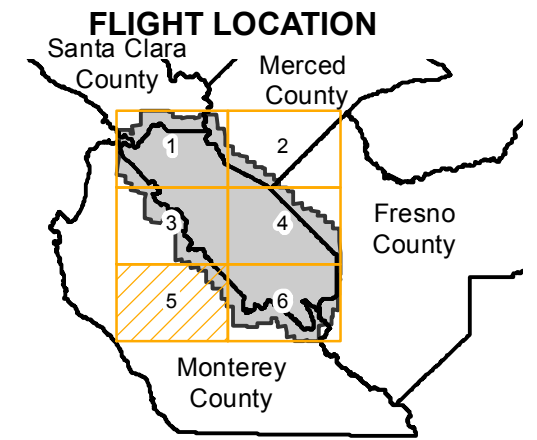
Scale of this index: 1:195,000

Sources: Esri, HERE, DeLorme, Intermap, increment P Corp., GEBCO, USGS, FAO, NPS, NRCAN, GeoBase, IGN, Kadaster NL, Ordnance Survey, Esri Japan, METI, Esri China (Hong Kong), swisstopo, MapmyIndia, © OpenStreetMap contributors, and the GIS User Community

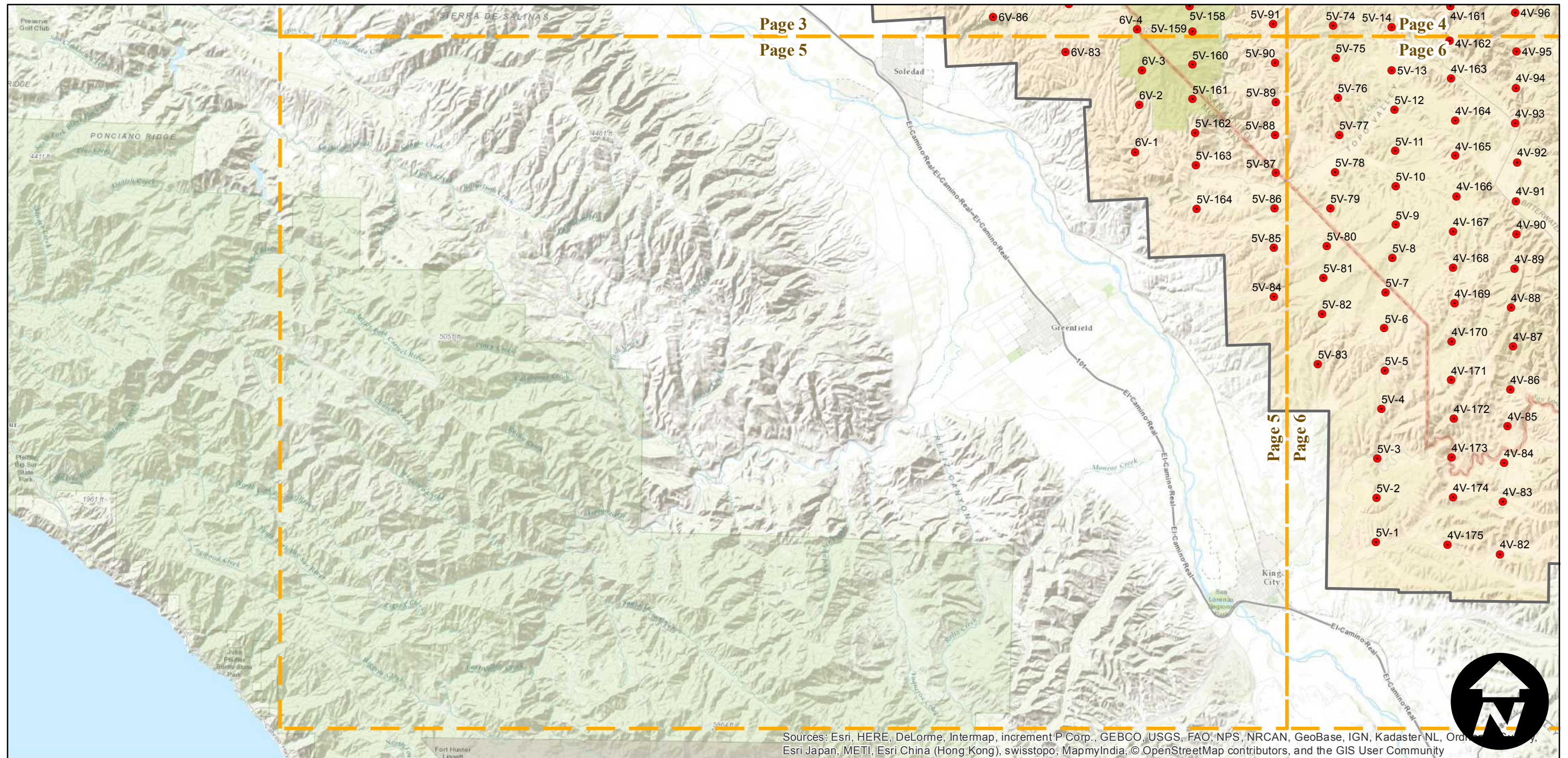
BUX-1958

Counties: San Benito, Monterey, Fresno, Merced, Santa Clara
 Flight date(s): 05-20-1959 to 07-12-1959
 Scale: 1:20,000
 Overlap: 60%

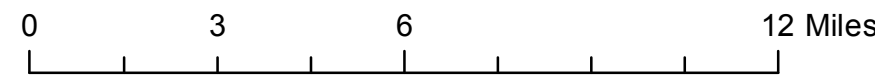
Note: Complete coverage of San Benito county. Coverage extends into surrounding counties.



Complete Metadata:
<http://www.library.ucsb.edu/map-imagery-lab/aerial-photography-information>



Sources: Esri, HERE, DeLorme, Intermap, increment P Corp., GEBCO, USGS, FAO, NPS, NRCAN, GeoBase, IGN, Kadaster NL, Ordnance Survey, Esri Japan, METI, Esri China (Hong Kong), swisstopo, MapmyIndia, © OpenStreetMap contributors, and the GIS User Community



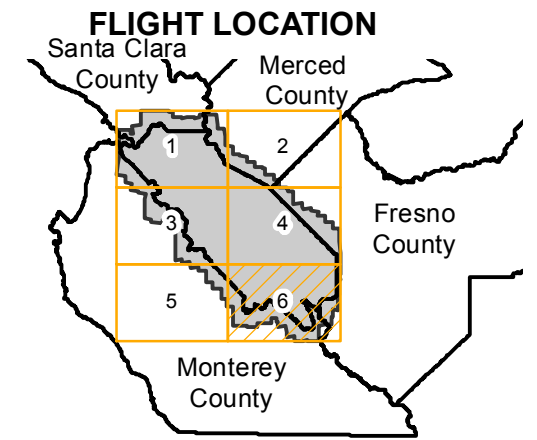
Index to Aerial Photography
 Page 5 of 6

Scale of this index: 1:195,000

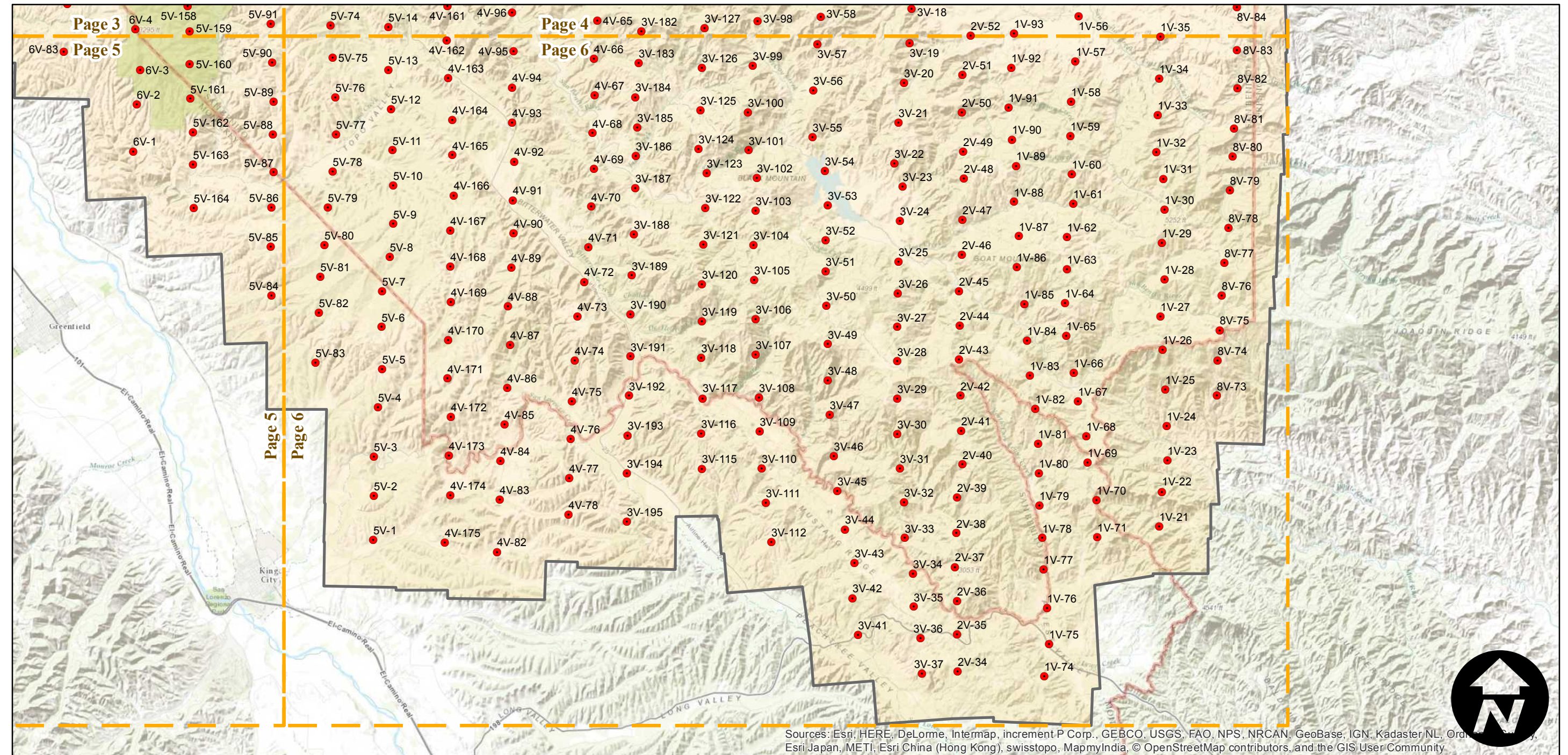
BUX-1958

Counties: San Benito, Monterey, Fresno, Merced, Santa Clara
Flight date(s): 05-20-1959 to 07-12-1959
Scale: 1:20,000
Overlap: 60%

Note: Complete coverage of San Benito county. Coverage extends into surrounding counties.



Complete Metadata:
<http://www.library.ucsb.edu/map-imagery-lab/aerial-photography-information>



Sources: Esri, HERE, DeLorme, Intermap, increment P Corp., GEBCO, USGS, FAO, NPS, NRCAN, GeoBase, IGN, Kadaster NL, Ordnance Survey, Esri Japan, METI, Esri China (Hong Kong), swisstopo, MapmyIndia, © OpenStreetMap contributors, and the GIS User Community

