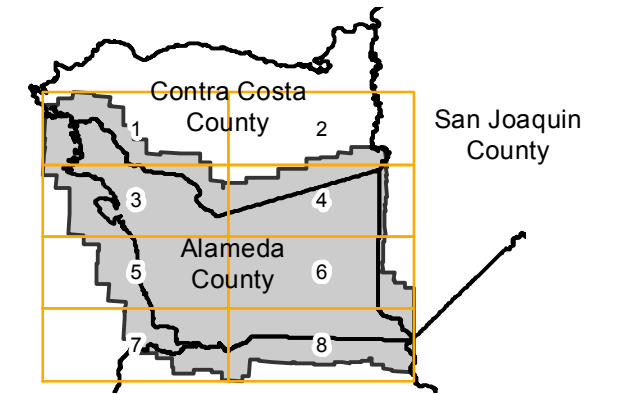


# BUT-1950

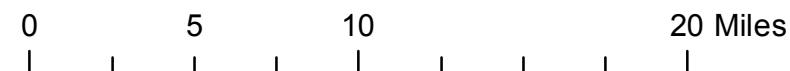
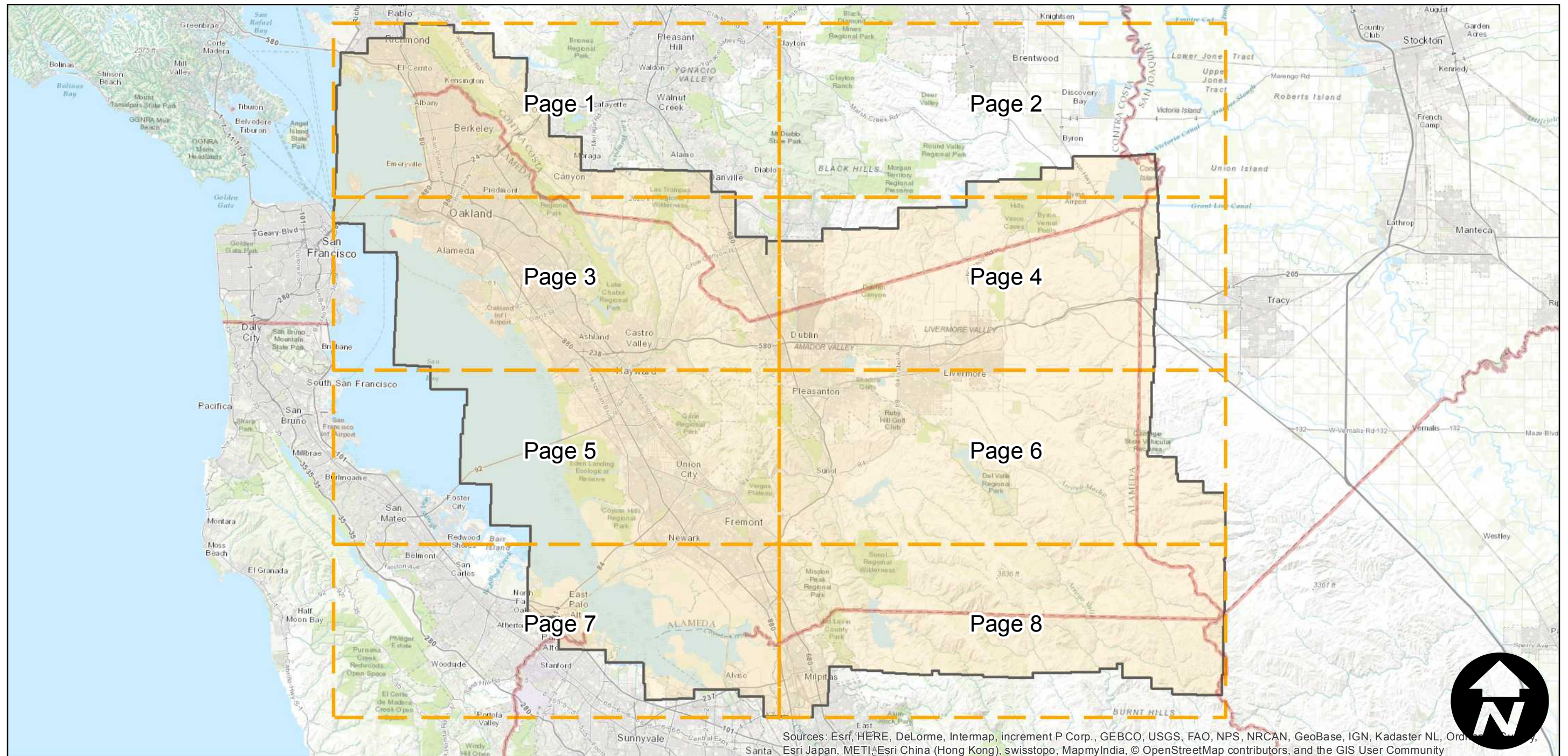
Counties: Alameda, Contra Costa, Santa Clara, San Joaquin  
Flight date(s): 03-12-1950 to 05-25-1950  
Scale: 1:20,000  
Overlap: 60%

Note: Coverage primarily covers northeastern Alameda County.

## FLIGHT LOCATION



Complete Metadata:  
<http://www.library.ucsb.edu/map-imagery-lab/aerial-photography-information>



Index to Aerial Photography  
Page Key

Scale of this index: 1:370,000

Sources: Esri, HERE, DeLorme, Intermap, increment P Corp., GEBCO, USGS, FAO, NPS, NRCAN, GeoBase, IGN, Kadaster NL, Ordnance Survey, Esri Japan, METI, Esri China (Hong Kong), swisstopo, MapmyIndia, © OpenStreetMap contributors, and the GIS User Community

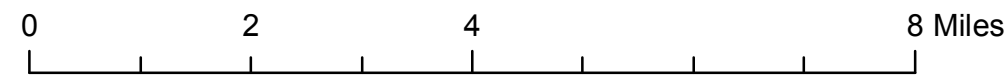
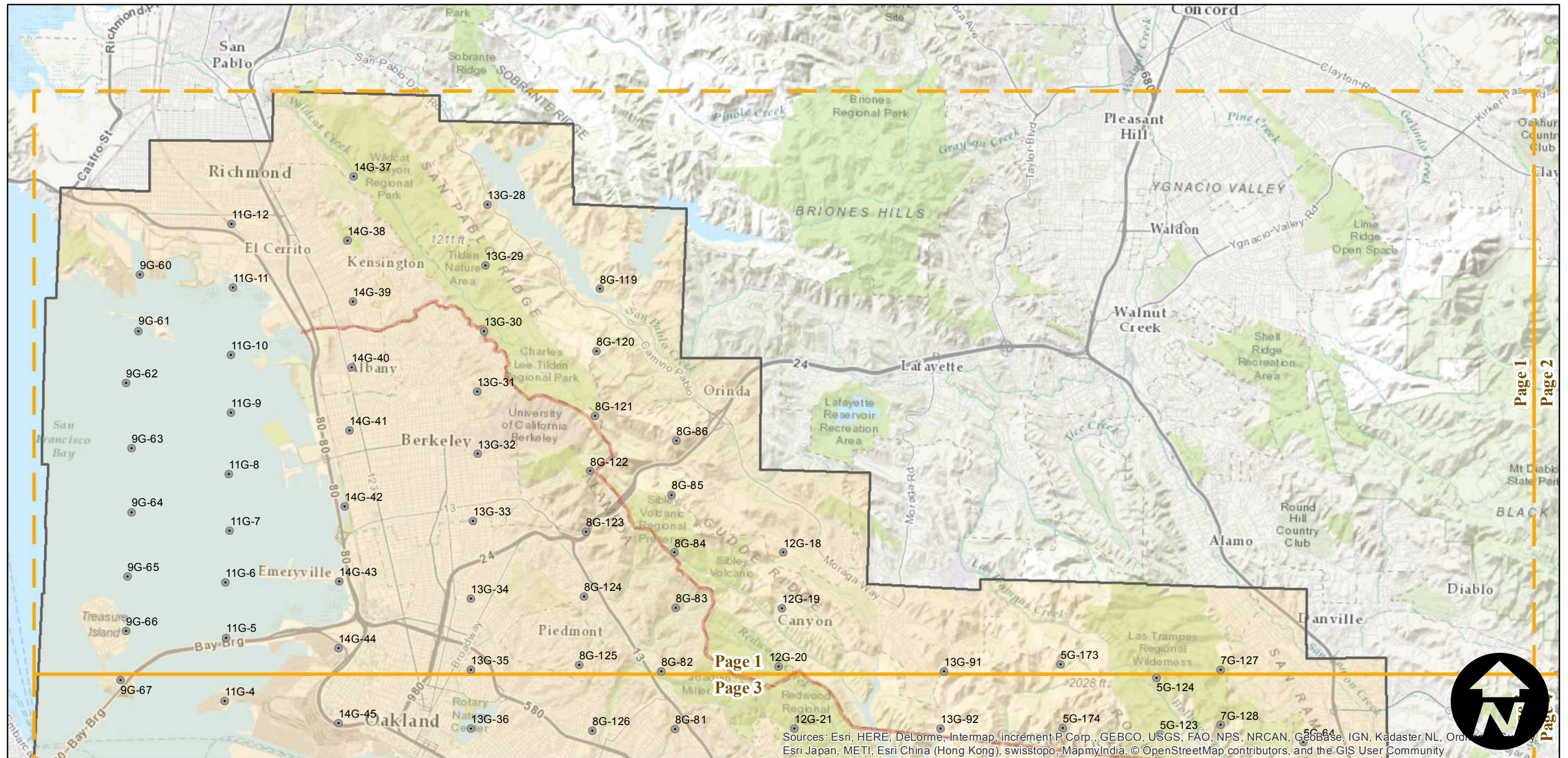
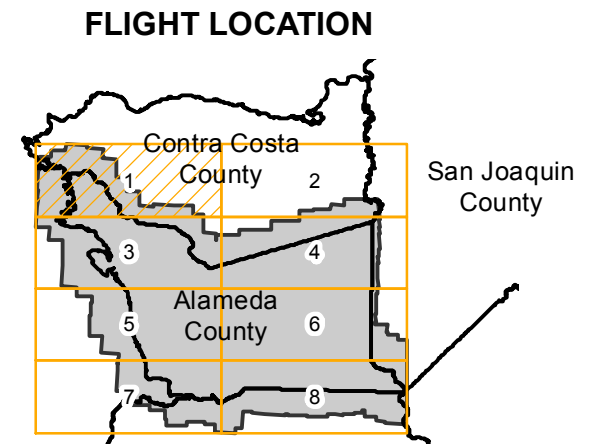
# BUT-1950

Counties: Alameda, Contra Costa, Santa Clara, San Joaquin  
 Flight date(s): 03-12-1950 to 05-25-1950  
 Scale: 1:20,000  
 Overlap: 60%

Complete Metadata:  
<http://www.library.ucsb.edu/map-imagery-lab/aerial-photography-information>

Note: Coverage primarily covers northeastern Alameda County.

- MIL owns frame
- MIL does not own frame



Sources: Esri, HERE, DeLorme, Intermap, increment P Corp., GEBCO, USGS, FAO, NPS, NRCAN, Geobase, IGN, Kadaster NL, Ordnance Survey, Esri Japan, METI, Esri China (Hong Kong), swisstopo, MapmyIndia, © OpenStreetMap contributors, and the GIS User Community

# BUT-1950

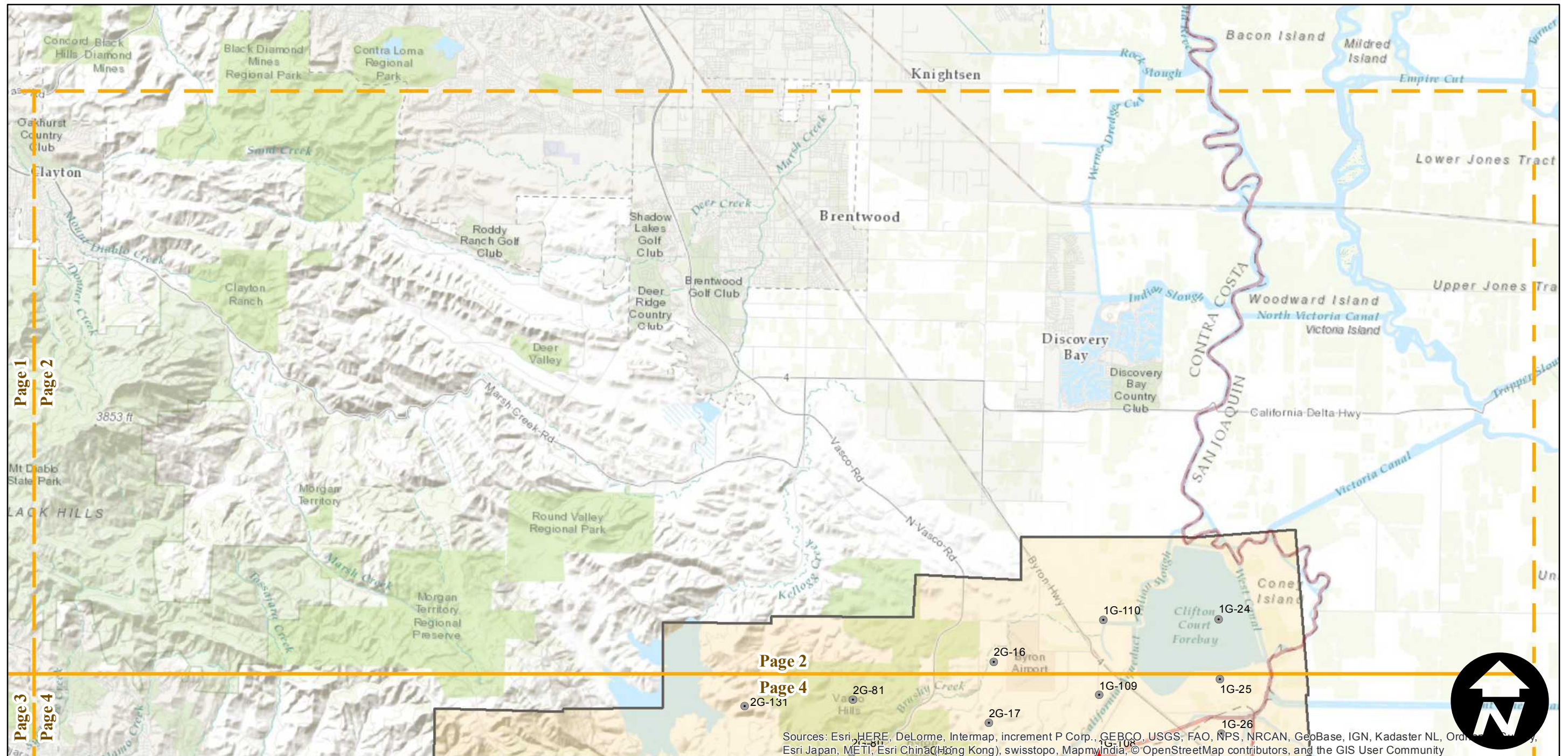
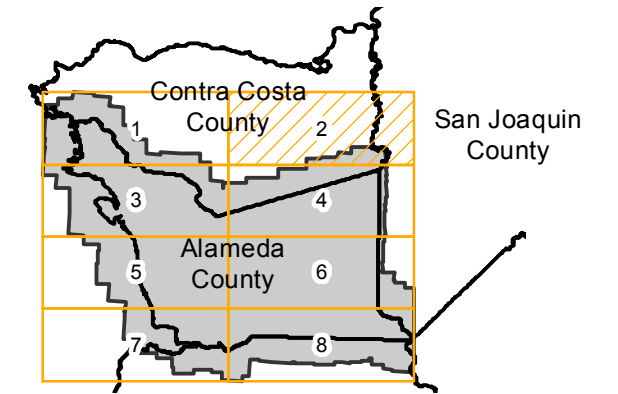
Counties: Alameda, Contra Costa, Santa Clara, San Joaquin  
Flight date(s): 03-12-1950 to 05-25-1950  
Scale: 1:20,000  
Overlap: 60%

Complete Metadata:  
<http://www.library.ucsb.edu/map-imagery-lab/aerial-photography-information>

Note: Coverage primarily covers northeastern Alameda County.

- MIL owns frame
- MIL does not own frame

## FLIGHT LOCATION



Sources: Esri, HERE, DeLorme, Intermap, increment P Corp., GEBCO, USGS, FAO, NPS, NRCAN, GeoBase, IGN, Kadaster NL, Ordnance Survey, Esri Japan, METI, Esri China (Hong Kong), swisstopo, MapmyIndia, © OpenStreetMap contributors, and the GIS User Community

0 2 4 8 Miles

Index to Aerial Photography  
Page 2 of 8

Scale of this index: 1:110,000

# BUT-1950

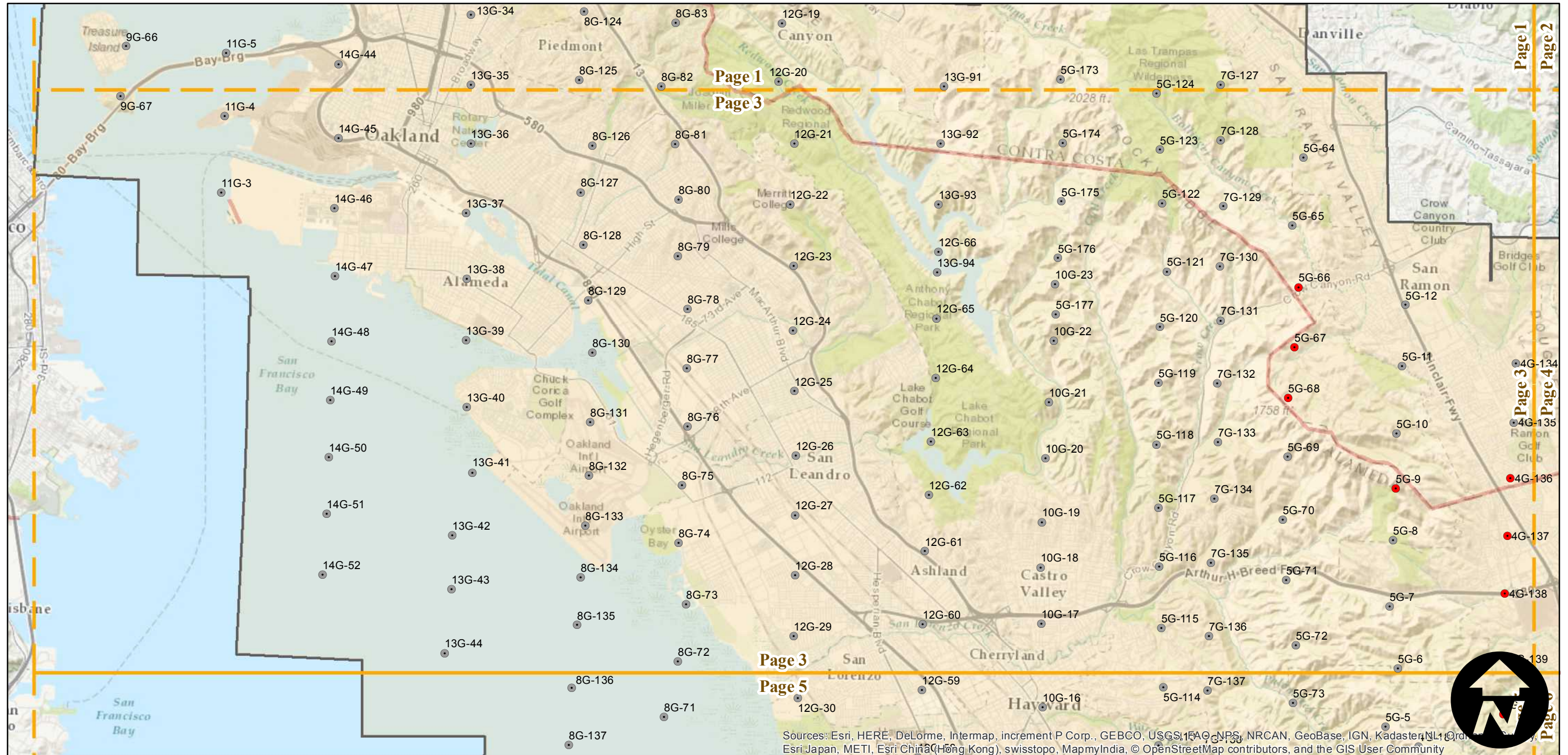
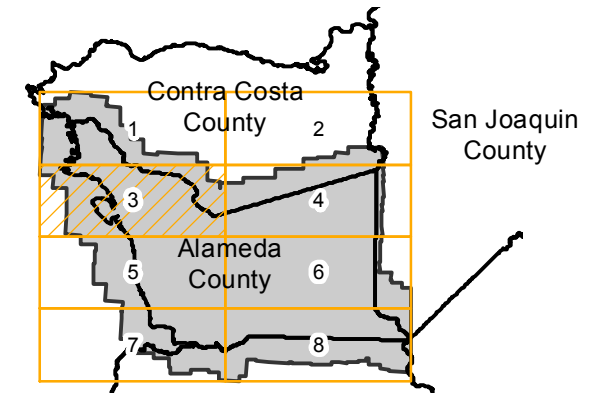
Counties: Alameda, Contra Costa, Santa Clara, San Joaquin  
 Flight date(s): 03-12-1950 to 05-25-1950  
 Scale: 1:20,000  
 Overlap: 60%

Complete Metadata:  
<http://www.library.ucsb.edu/map-imagery-lab/aerial-photography-information>

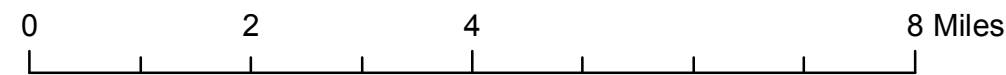
Note: Coverage primarily covers northeastern Alameda County.

- MIL owns frame
- MIL does not own frame

## FLIGHT LOCATION



Sources: Esri, HERE, DeLorme, Intermap, increment P Corp., GEBCO, USGS, FAO, NPS, NRCAN, GeoBase, IGN, Kadaster NL, Ordnance Survey, Esri Japan, METI, Esri China (Hong Kong), swisstopo, MapmyIndia, © OpenStreetMap contributors, and the GIS User Community



# BUT-1950

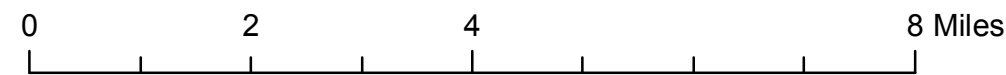
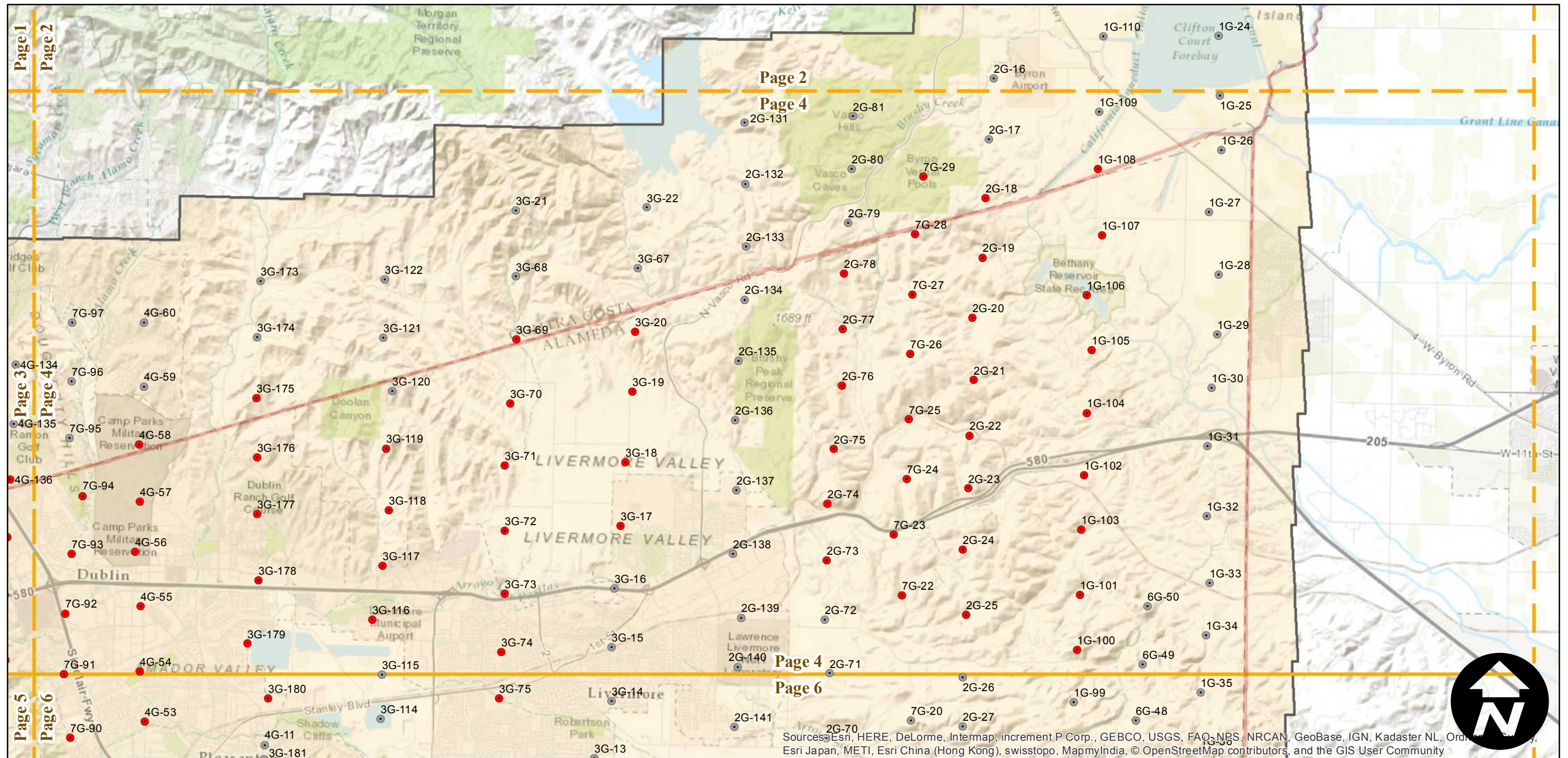
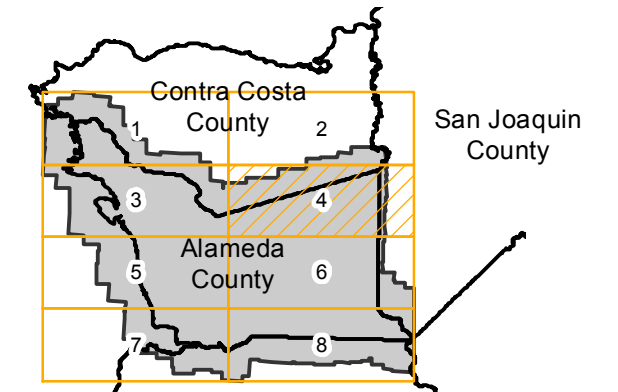
Counties: Alameda, Contra Costa, Santa Clara, San Joaquin  
 Flight date(s): 03-12-1950 to 05-25-1950  
 Scale: 1:20,000  
 Overlap: 60%

Complete Metadata:  
<http://www.library.ucsb.edu/map-imagery-lab/aerial-photography-information>

Note: Coverage primarily covers northeastern Alameda County.

- MIL owns frame
- MIL does not own frame

## FLIGHT LOCATION



Sources: Esri, HERE, DeLorme, Intermap, increment P Corp., GEBCO, USGS, FAO, NRS, NRCAN, GeoBase, IGN, Kadaster NL, Ordnance Survey, Esri Japan, METI, Esri China (Hong Kong), swisstopo, MapmyIndia, © OpenStreetMap contributors, and the GIS User Community



# BUT-1950

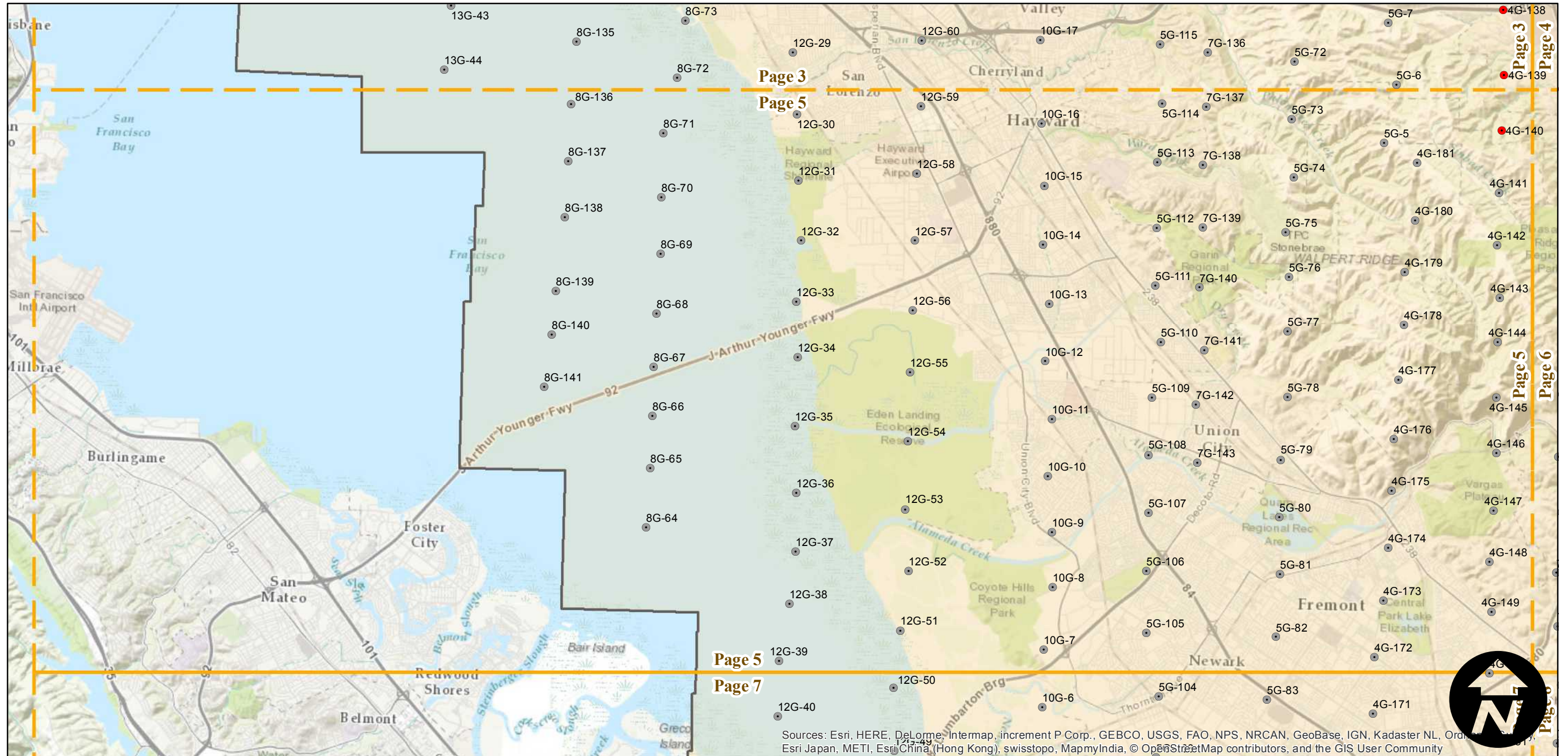
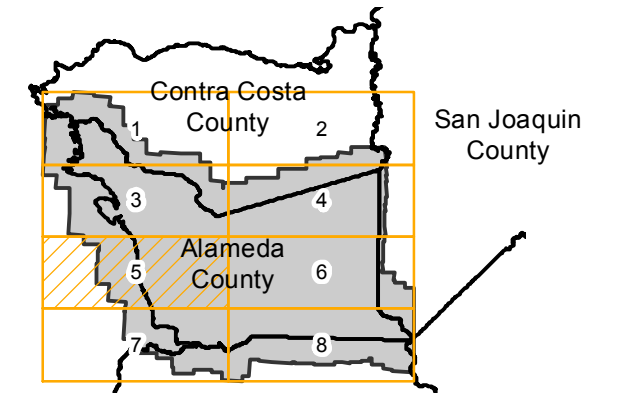
Counties: Alameda, Contra Costa, Santa Clara, San Joaquin  
 Flight date(s): 03-12-1950 to 05-25-1950  
 Scale: 1:20,000  
 Overlap: 60%

Complete Metadata:  
<http://www.library.ucsb.edu/map-imagery-lab/aerial-photography-information>

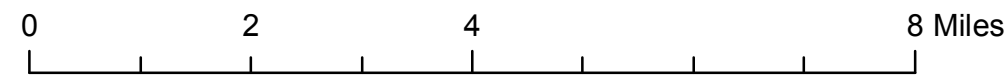
Note: Coverage primarily covers northeastern Alameda County.

- MIL owns frame
- MIL does not own frame

## FLIGHT LOCATION



Sources: Esri, HERE, DeLorme, Intermap, increment P Corp., GEBCO, USGS, FAO, NPS, NRCAN, GeoBase, IGN, Kadaster NL, Ordnance Survey, Esri Japan, METI, Esri China (Hong Kong), swisstopo, MapmyIndia, © OpenStreetMap contributors, and the GIS User Community



# BUT-1950

Counties: Alameda, Contra Costa, Santa Clara, San Joaquin

Flight date(s): 03-12-1950 to 05-25-1950

Scale: 1:20,000

Overlap: 60%

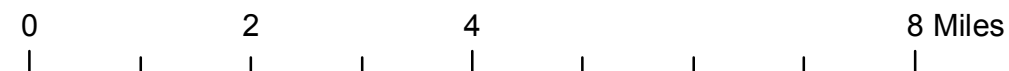
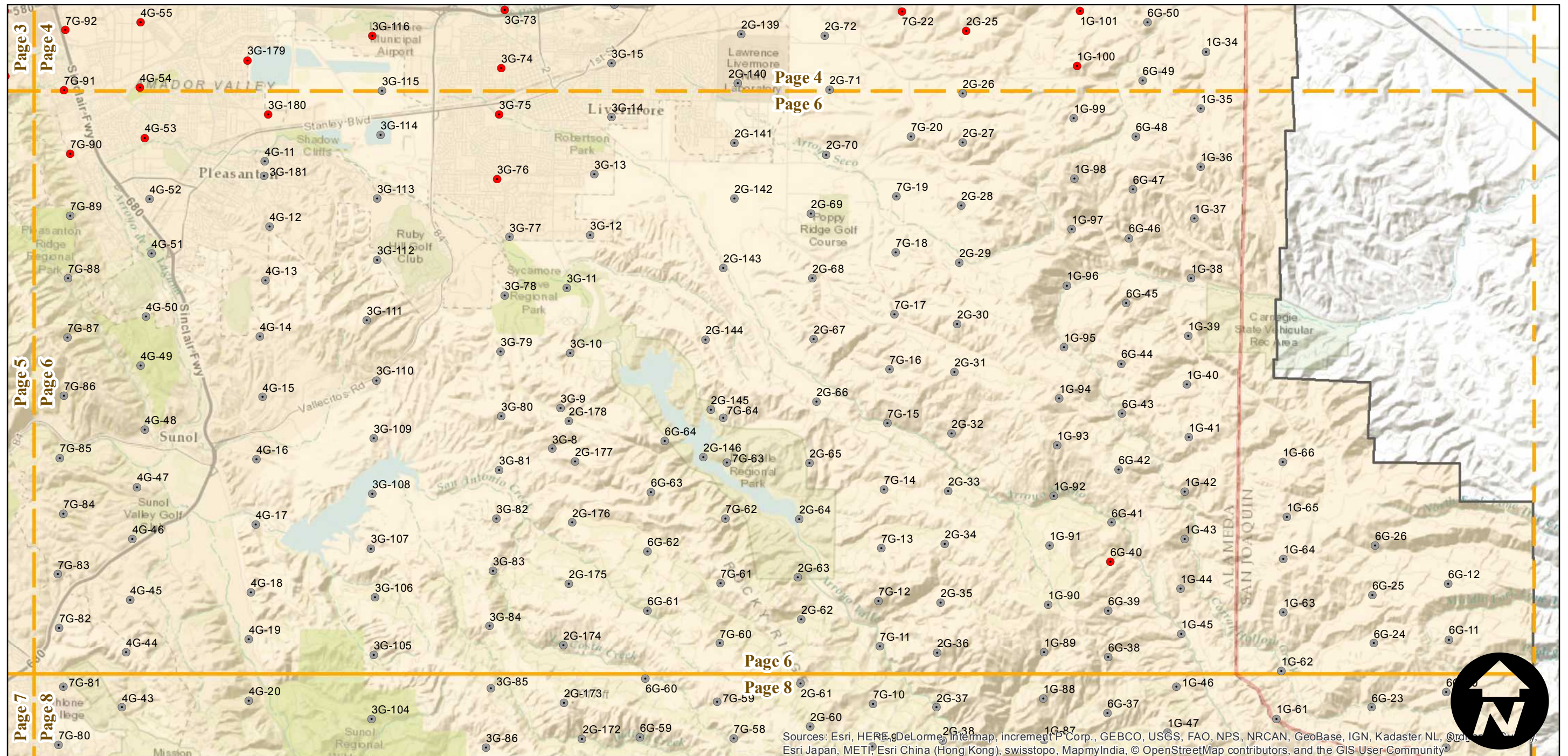
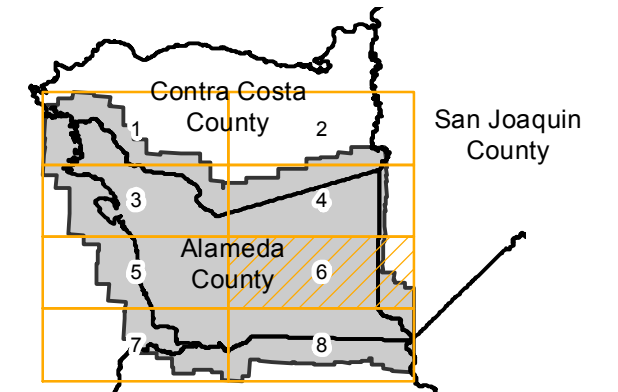
Complete Metadata:

<http://www.library.ucsb.edu/map-imagery-lab/aerial-photography-information>

Note: Coverage primarily covers northeastern Alameda County.

- MIL owns frame
- MIL does not own frame

## FLIGHT LOCATION



Index to Aerial Photography  
Page 6 of 8

Scale of this index: 1:110,000



Sources: Esri, HERE, DeLorme, Intermap, increment P Corp., GEBCO, USGS, FAO, NPS, NRCAN, GeoBase, IGN, Kadaster NL, Ordnance Survey, Esri Japan, METI, Esri China (Hong Kong), swisstopo, MapmyIndia, © OpenStreetMap contributors, and the GIS User Community

# BUT-1950

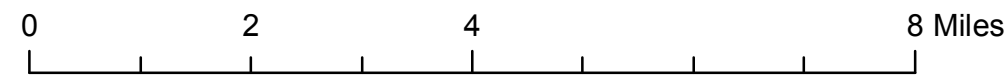
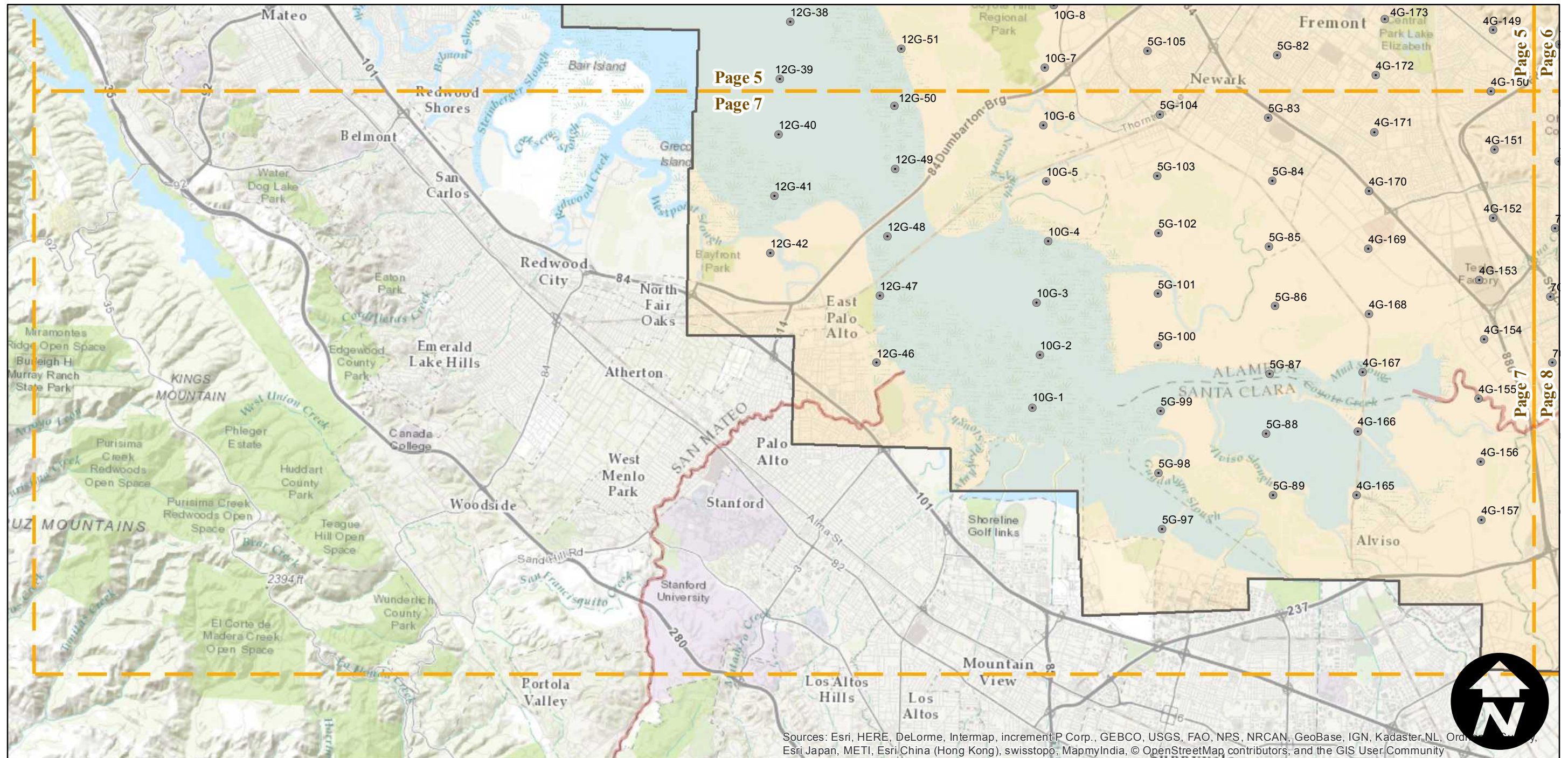
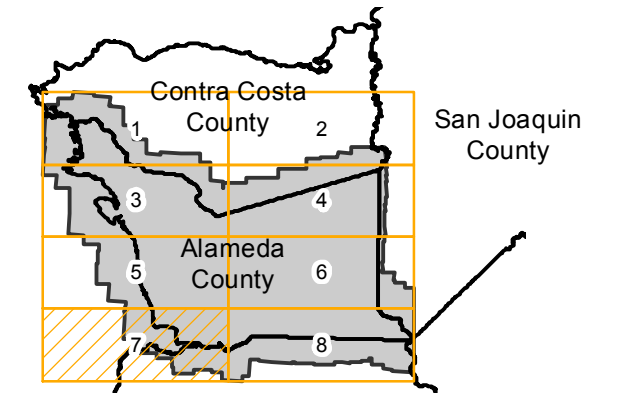
Counties: Alameda, Contra Costa, Santa Clara, San Joaquin  
 Flight date(s): 03-12-1950 to 05-25-1950  
 Scale: 1:20,000  
 Overlap: 60%

Complete Metadata:  
<http://www.library.ucsb.edu/map-imagery-lab/aerial-photography-information>

Note: Coverage primarily covers northeastern Alameda County.

- MIL owns frame
- MIL does not own frame

## FLIGHT LOCATION



Sources: Esri, HERE, DeLorme, Intermap, increment P Corp., GEBCO, USGS, FAO, NPS, NRCAN, GeoBase, IGN, Kadaster NL, Ordnance Survey, Esri Japan, METI, Esri China (Hong Kong), swisstopo, MapmyIndia, © OpenStreetMap contributors, and the GIS User Community



# BUT-1950

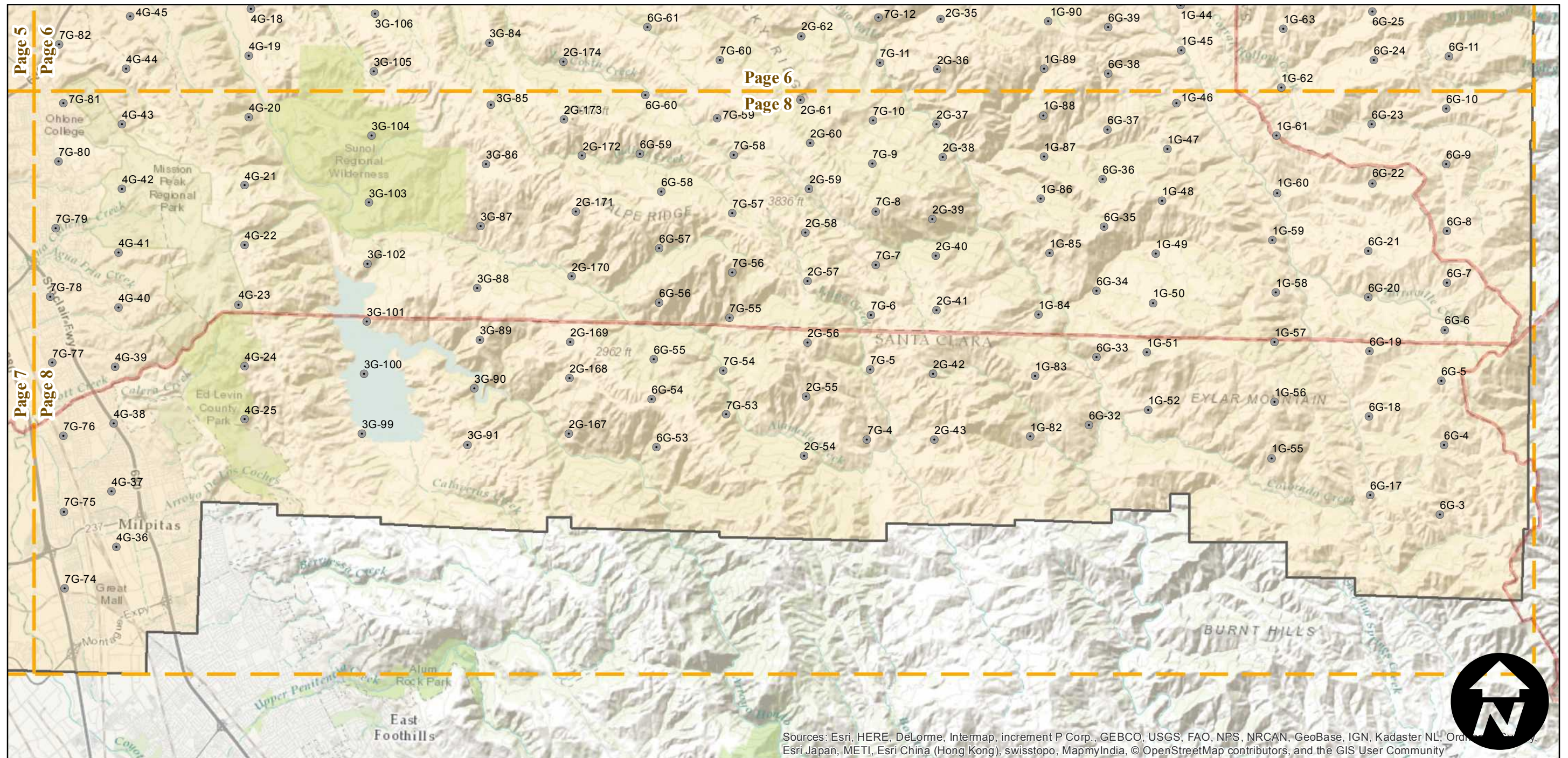
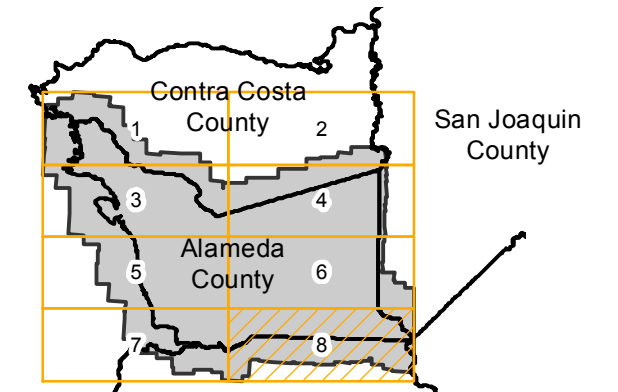
Counties: Alameda, Contra Costa, Santa Clara, San Joaquin  
 Flight date(s): 03-12-1950 to 05-25-1950  
 Scale: 1:20,000  
 Overlap: 60%

Complete Metadata:  
<http://www.library.ucsb.edu/map-imagery-lab/aerial-photography-information>

Note: Coverage primarily covers northeastern Alameda County.

- MIL owns frame
- MIL does not own frame

## FLIGHT LOCATION



Sources: Esri, HERE, DeLorme, Intermap, increment P Corp., GEBCO, USGS, FAO, NPS, NRCAN, GeoBase, IGN, Kadaster NL, Ordnance Survey, Esri Japan, METI, Esri China (Hong Kong), swisstopo, MapmyIndia, © OpenStreetMap contributors, and the GIS User Community

0 2 4 8 Miles

Index to Aerial Photography  
 Page 8 of 8

Scale of this index: 1:110,000