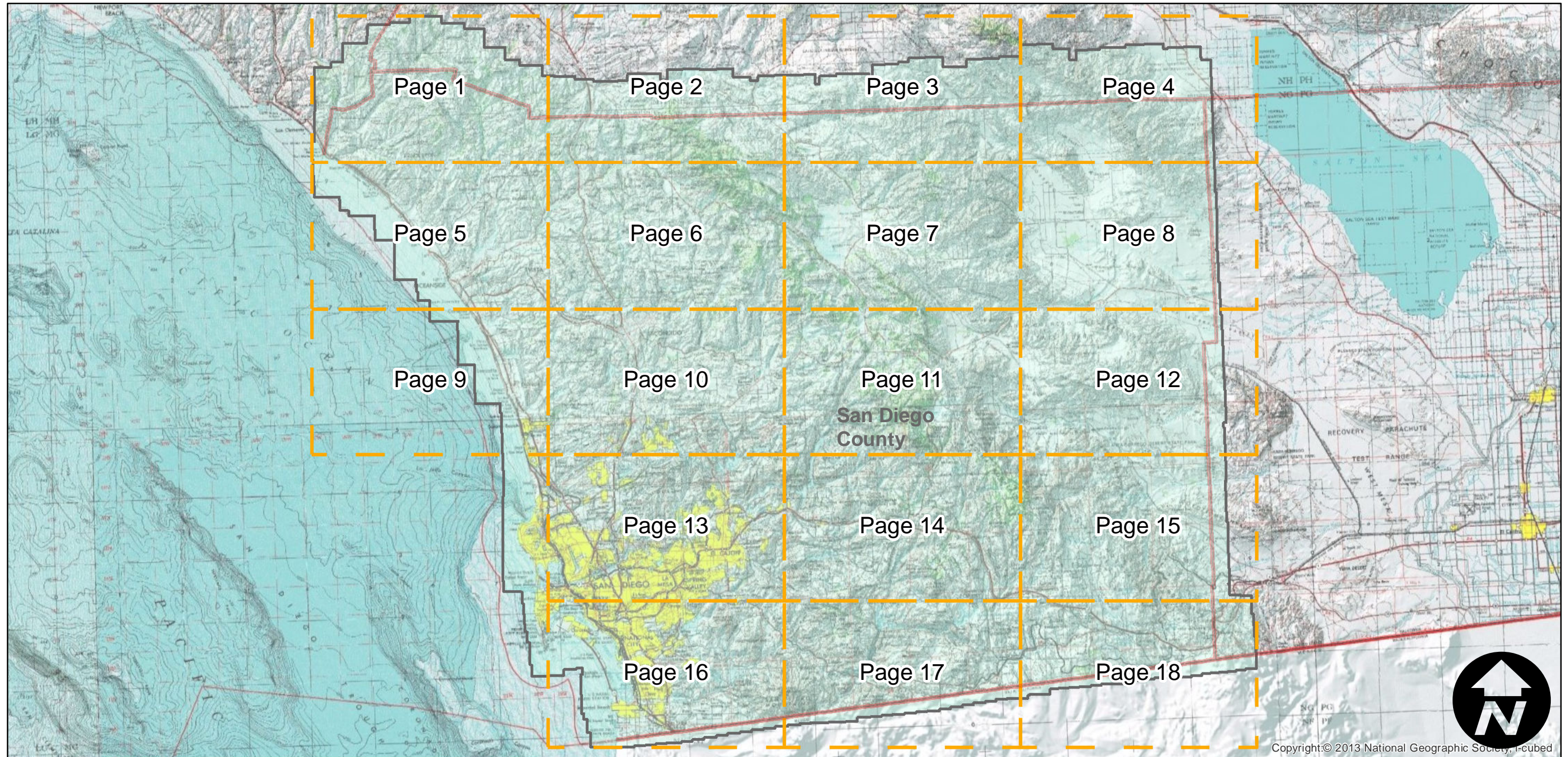
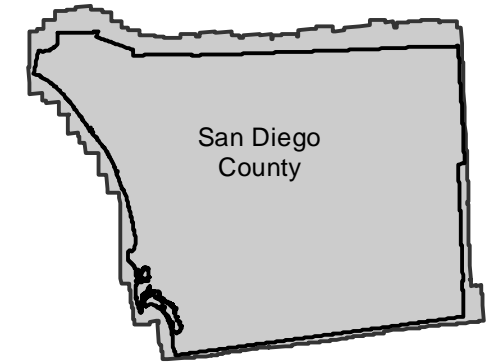


AXN-1953

Counties: San Diego
Flight date(s): 01-01-1953 to 12-31-1953
Scale: 1:20,000
Overlap: 60%

Complete Metadata:
<http://www.library.ucsb.edu/mil/aerial-photography-tools>

FLIGHT LOCATION



0 12.5 25 50 Miles

Index to Aerial Photography
Page Key

Scale of this index: 1:650,000

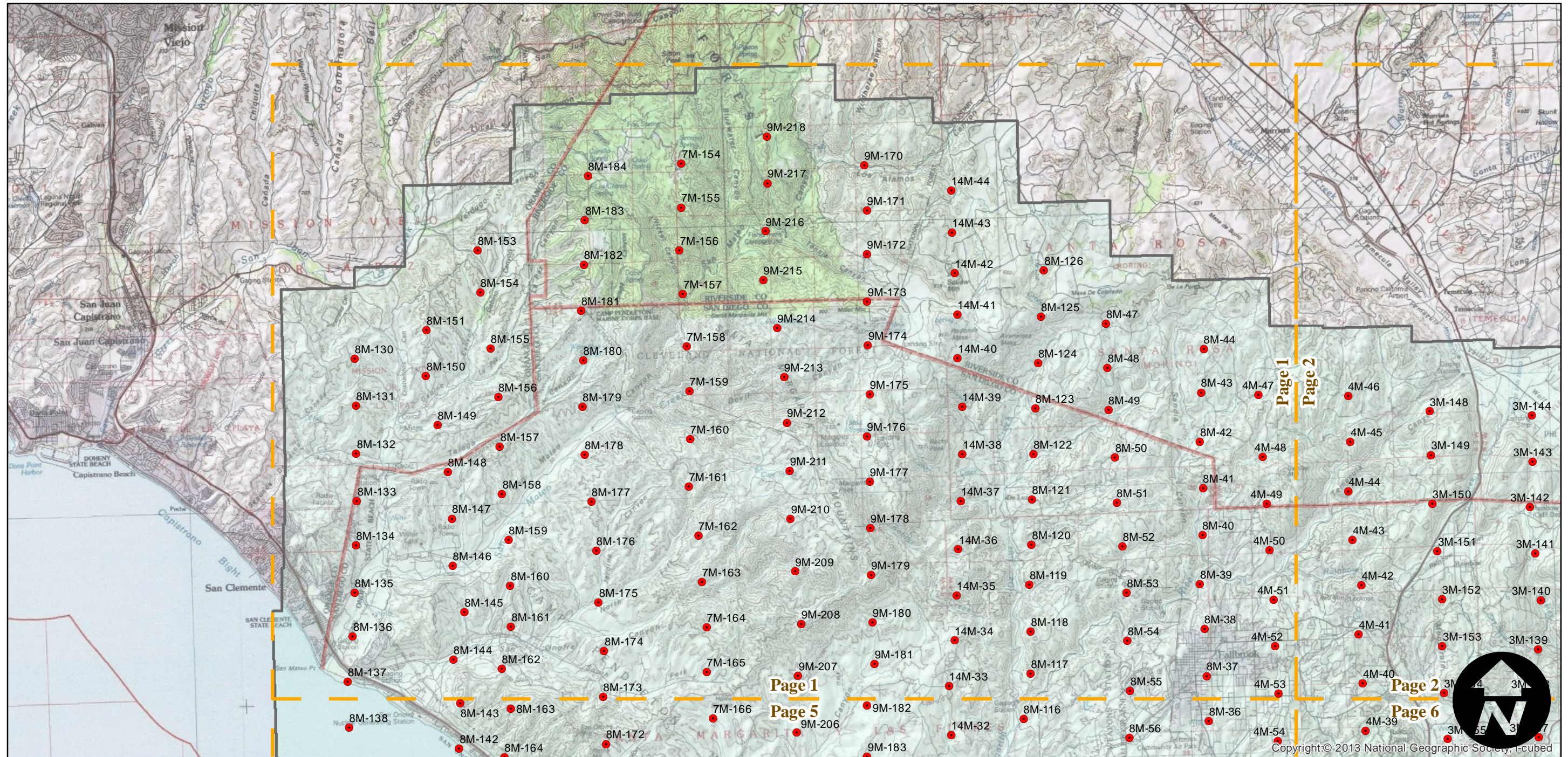
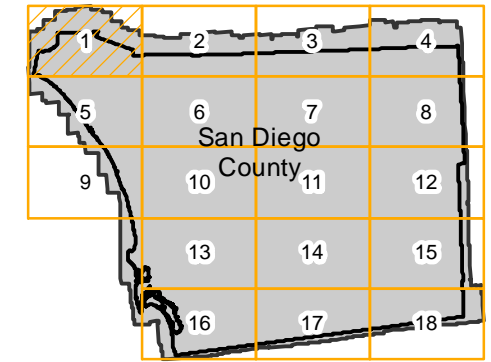
AXN-1953

Counties: San Diego
 Flight date(s): 01-01-1953 to 12-31-1953
 Scale: 1:20,000
 Overlap: 60%

Complete Metadata:
<http://www.library.ucsb.edu/mil/aerial-photography-tools>

- MIL owns frame
- MIL does not own frame

FLIGHT LOCATION



0 2.5 5 10 Miles

Index to Aerial Photography
 Page 1 of 18

Scale of this index: 1:150,000

Copyright © 2013 National Geographic Society, i-cubed

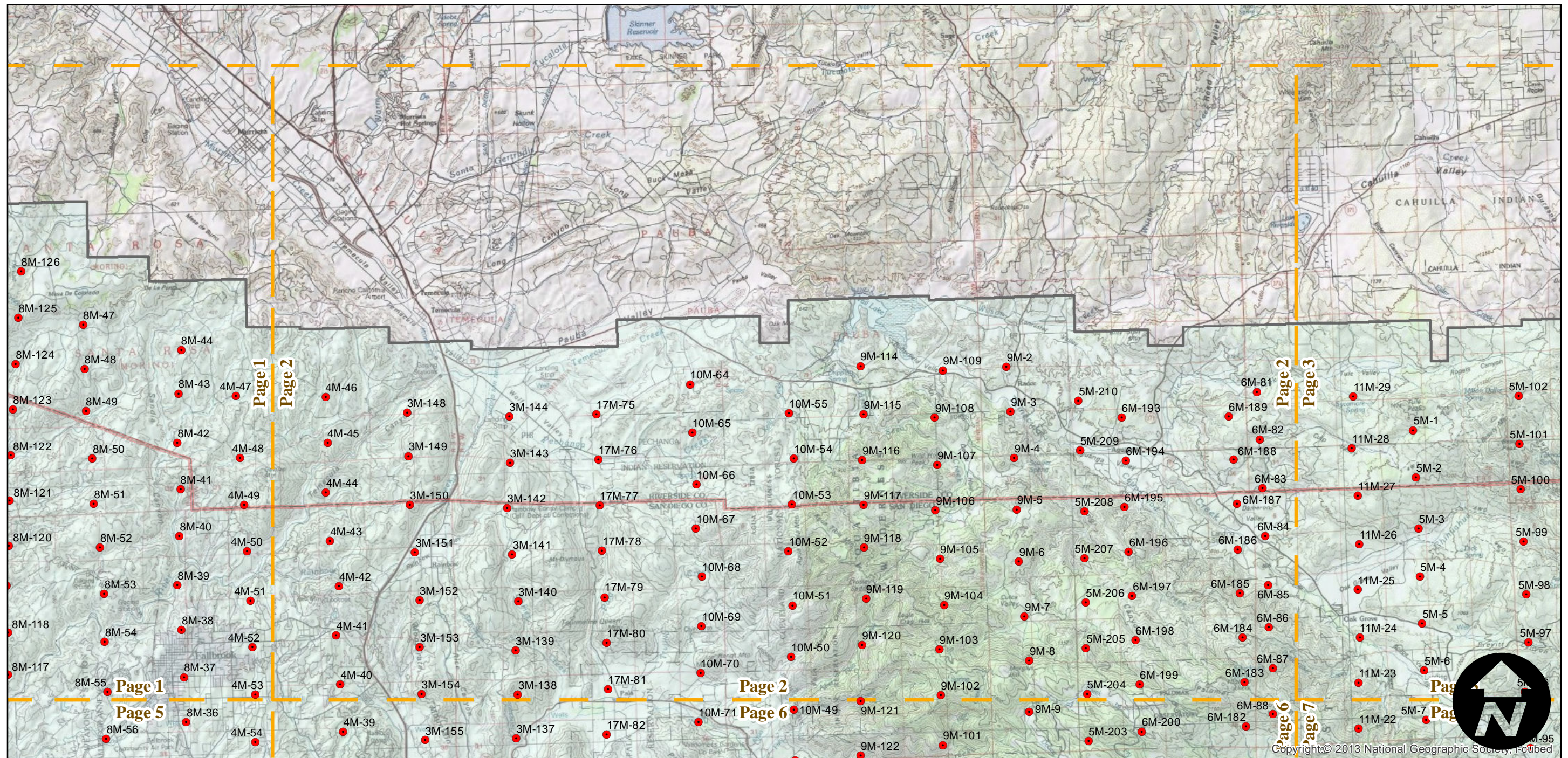
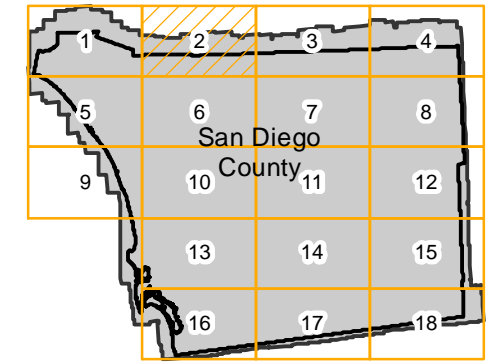
AXN-1953

Counties: San Diego
Flight date(s): 01-01-1953 to 12-31-1953
Scale: 1:20,000
Overlap: 60%

Complete Metadata:
<http://www.library.ucsb.edu/mil/aerial-photography-tools>

- MIL owns frame
- MIL does not own frame

FLIGHT LOCATION



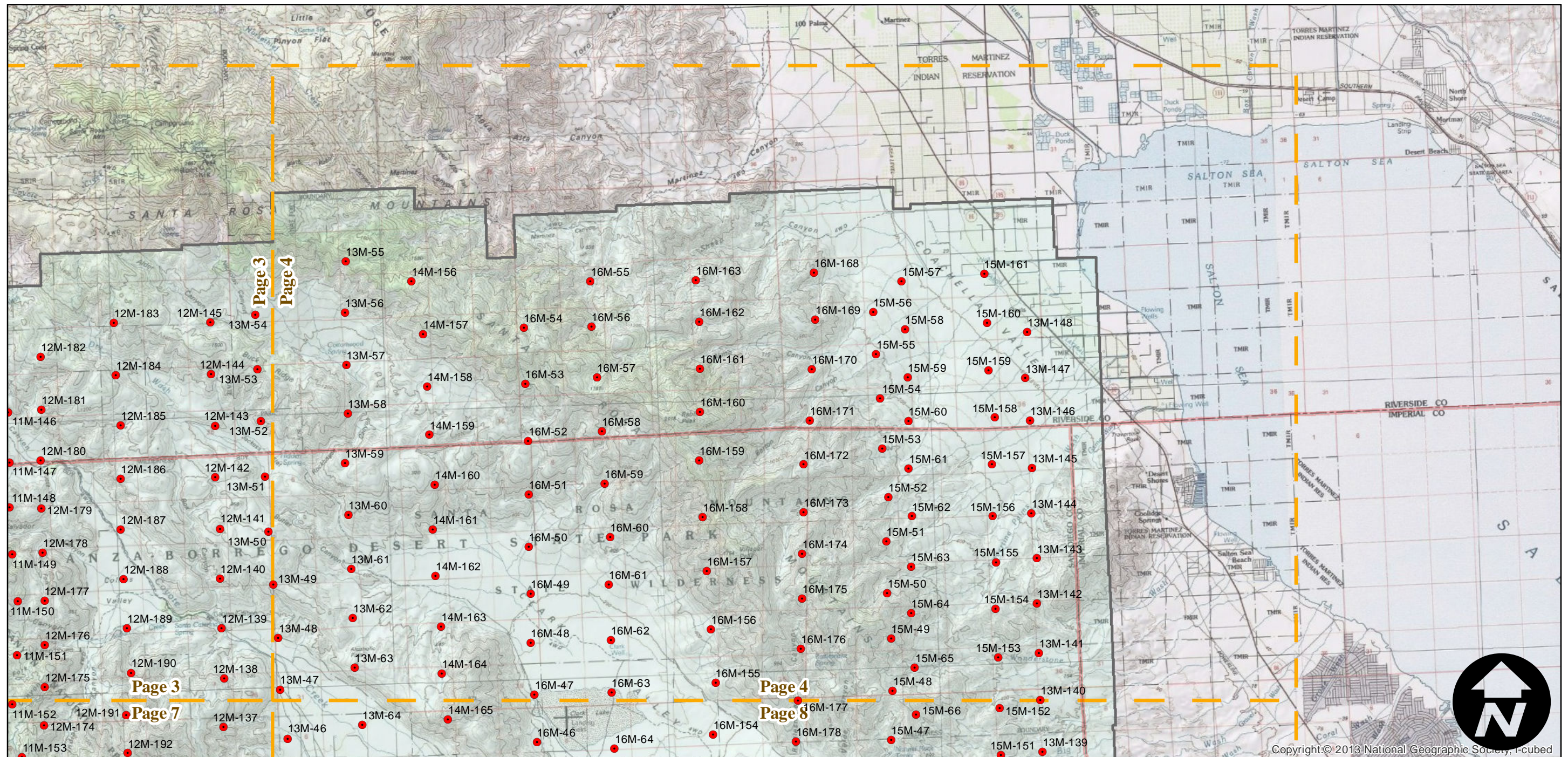
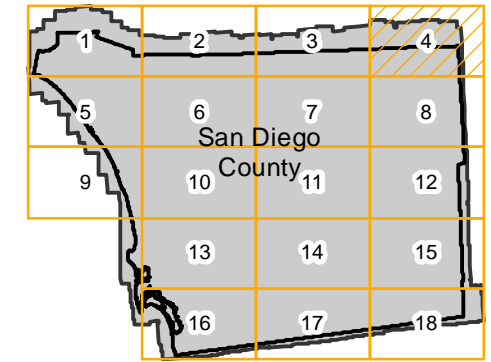
AXN-1953

Counties: San Diego
Flight date(s): 01-01-1953 to 12-31-1953
Scale: 1:20,000
Overlap: 60%

Complete Metadata:
<http://www.library.ucsb.edu/mil/aerial-photography-tools>

- MIL owns frame
- MIL does not own frame

FLIGHT LOCATION



0 2.5 5 10 Miles

Index to Aerial Photography
Page 4 of 18

Scale of this index: 1:150,000

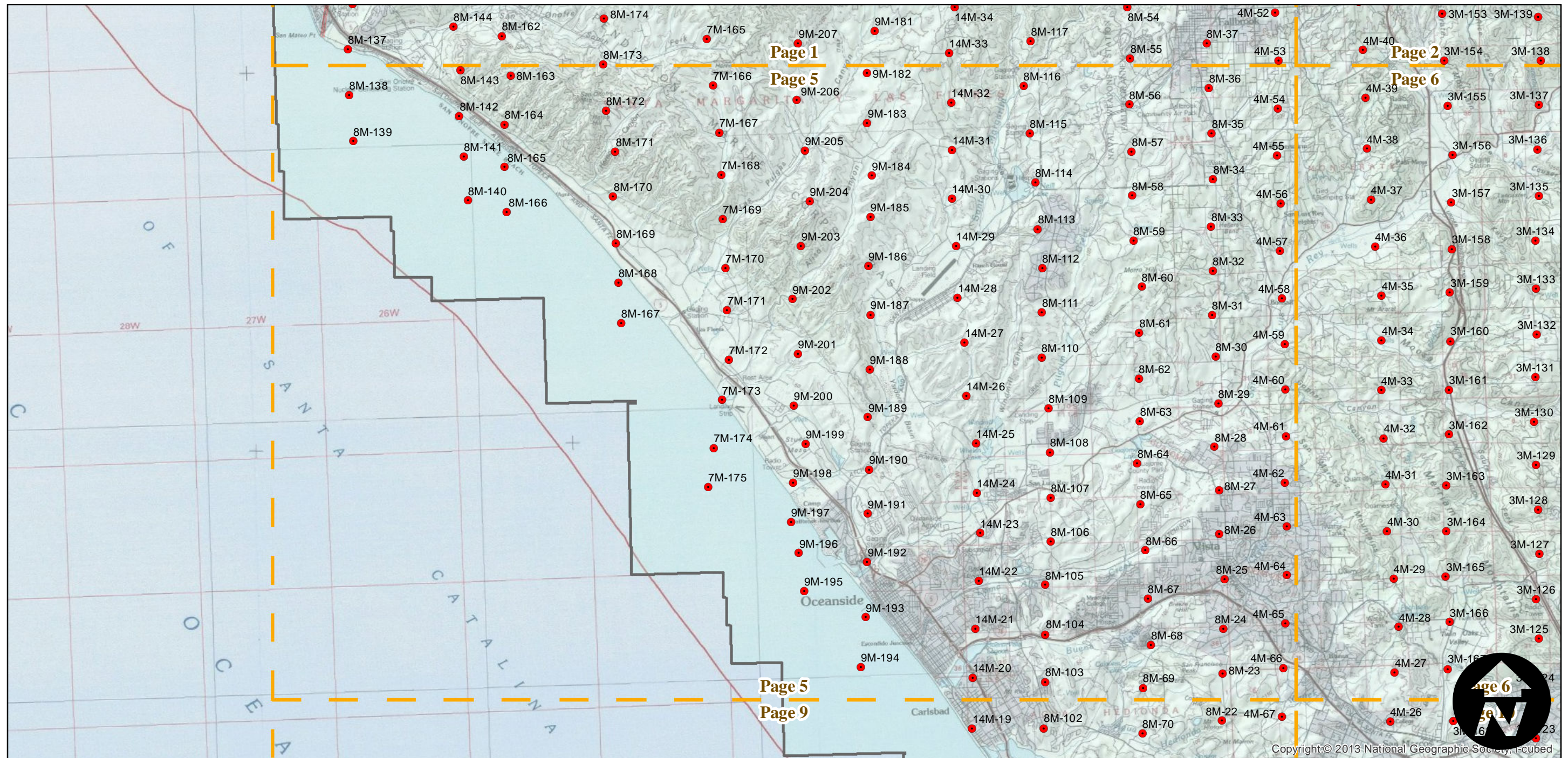
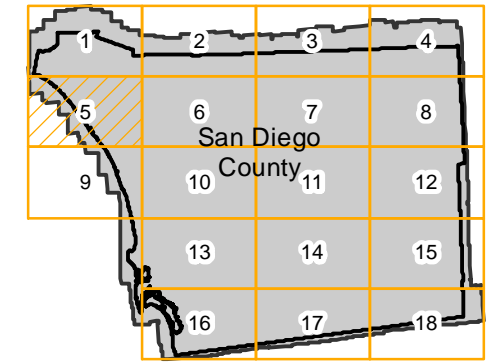
AXN-1953

Counties: San Diego
Flight date(s): 01-01-1953 to 12-31-1953
Scale: 1:20,000
Overlap: 60%

Complete Metadata:
<http://www.library.ucsb.edu/mil/aerial-photography-tools>

- MIL owns frame
- MIL does not own frame

FLIGHT LOCATION



0 2.5 5 10 Miles

Index to Aerial Photography
Page 5 of 18

Scale of this index: 1:150,000

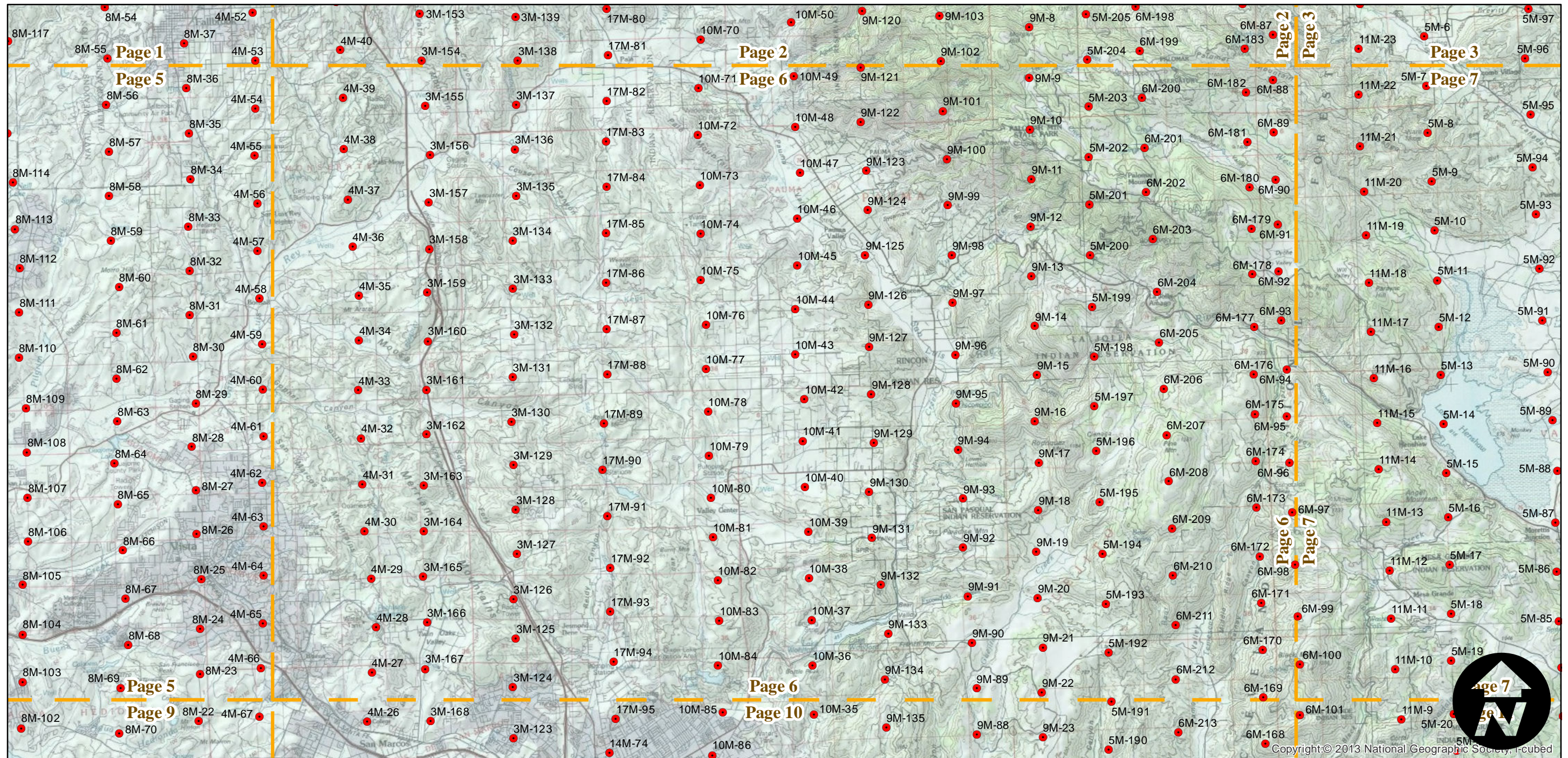
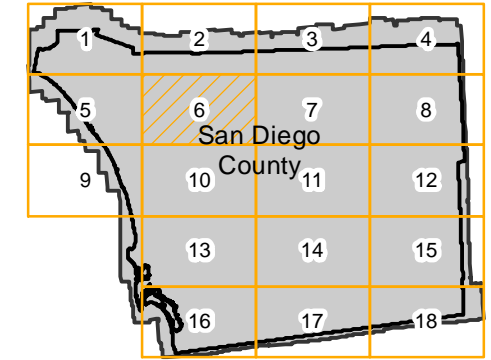
AXN-1953

Counties: San Diego
Flight date(s): 01-01-1953 to 12-31-1953
Scale: 1:20,000
Overlap: 60%

Complete Metadata:
<http://www.library.ucsb.edu/mil/aerial-photography-tools>

- MIL owns frame
- MIL does not own frame

FLIGHT LOCATION



0 2.5 5 10 Miles

Index to Aerial Photography
Page 6 of 18

Scale of this index: 1:150,000

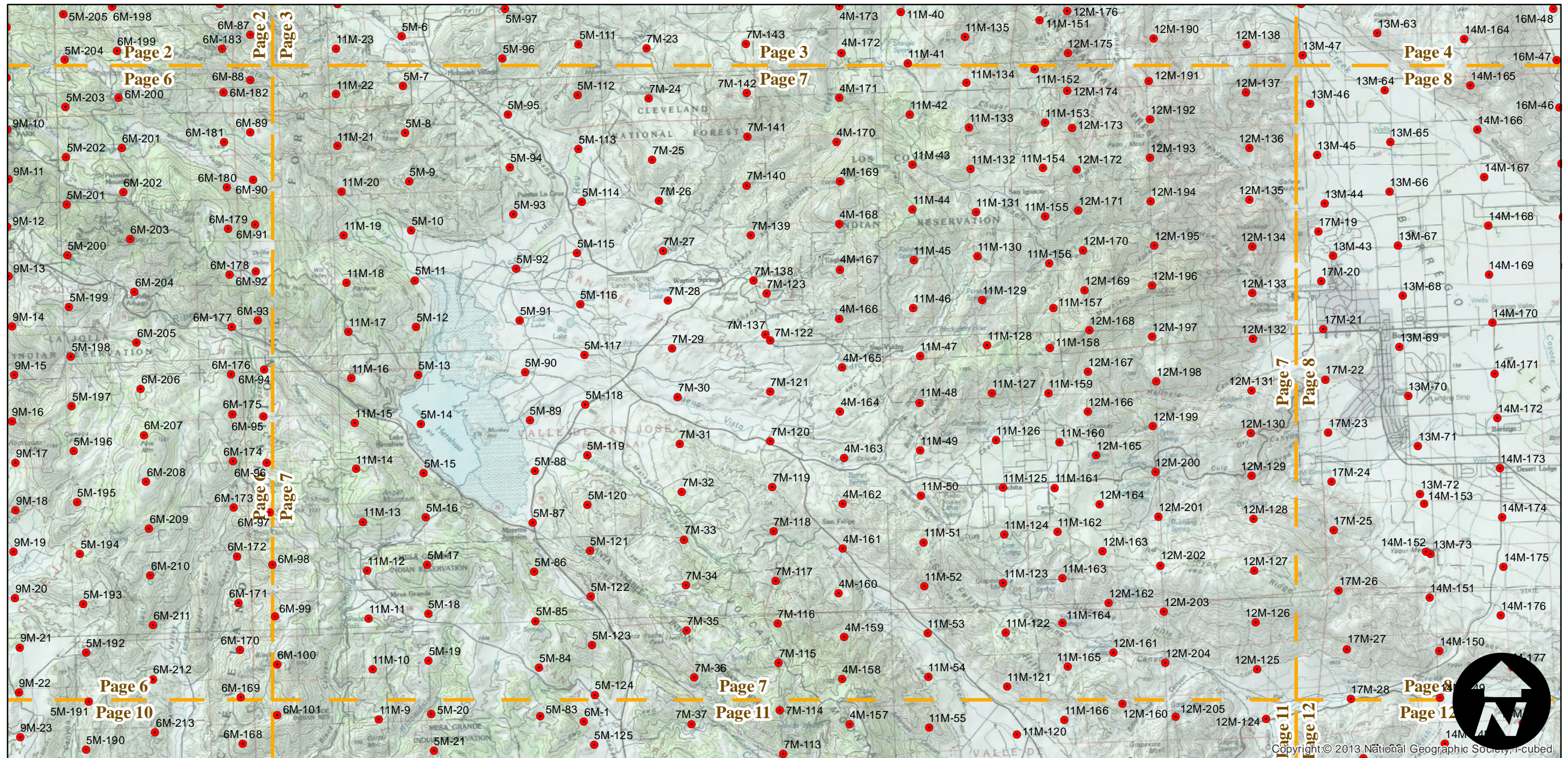
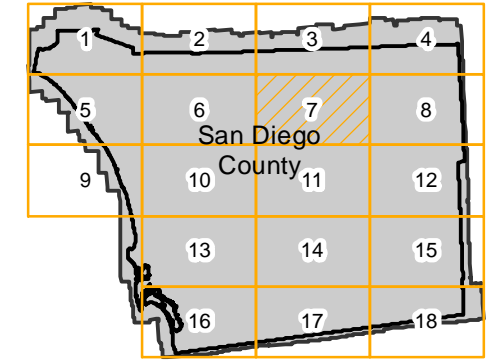
AXN-1953

Counties: San Diego
Flight date(s): 01-01-1953 to 12-31-1953
Scale: 1:20,000
Overlap: 60%

Complete Metadata:
<http://www.library.ucsb.edu/mil/aerial-photography-tools>

- MIL owns frame
- MIL does not own frame

FLIGHT LOCATION



0 2.5 5 10 Miles

Index to Aerial Photography
Page 7 of 18

Scale of this index: 1:150,000

Copyright © 2013 National Geographic Society, I-cubed

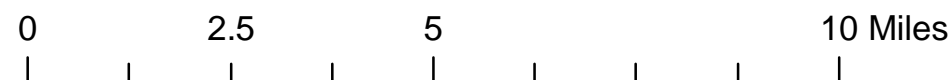
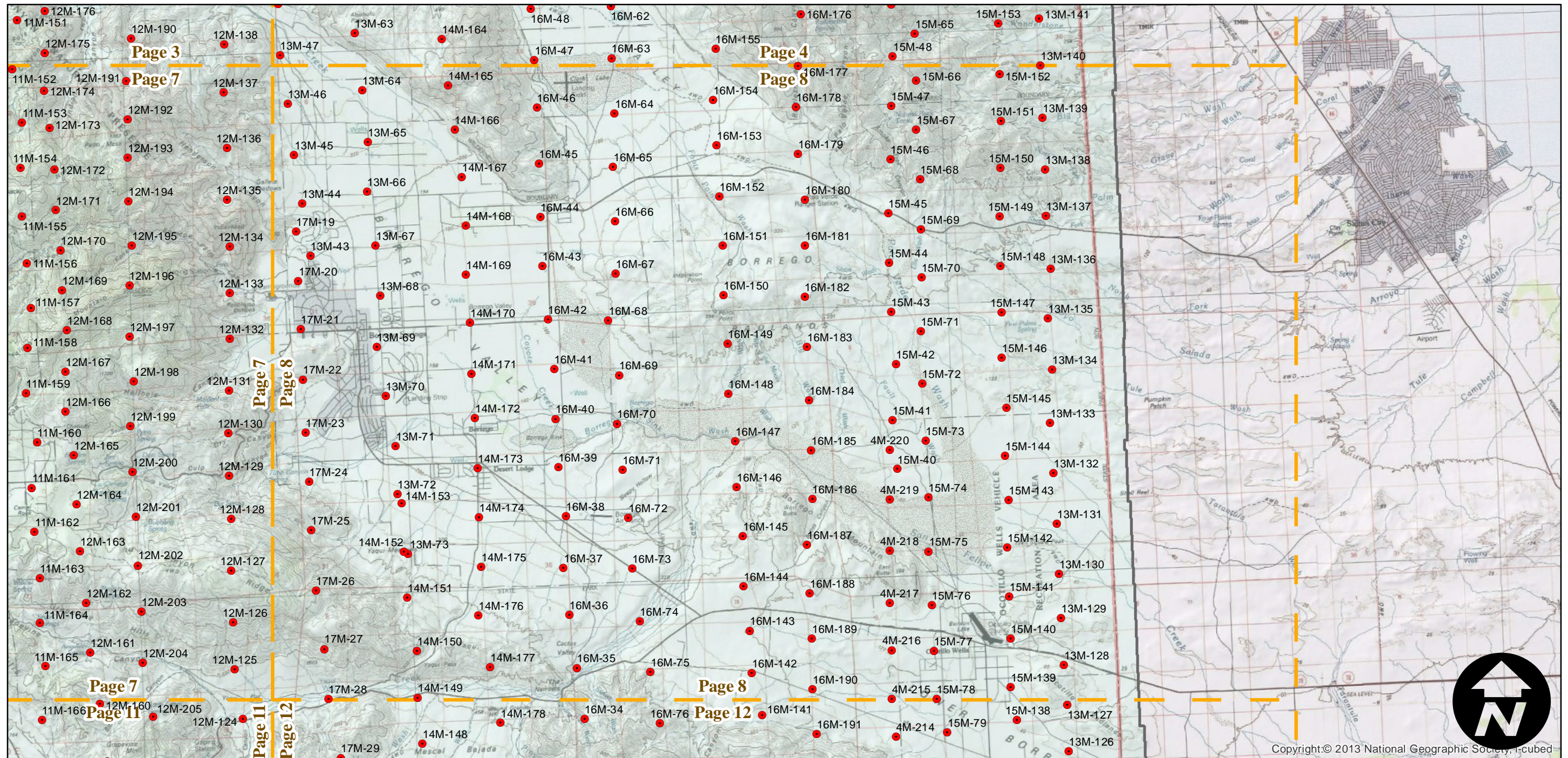
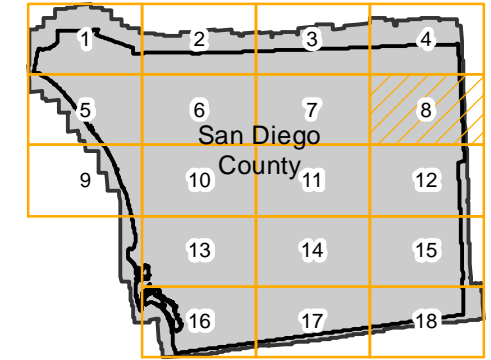
AXN-1953

Counties: San Diego
Flight date(s): 01-01-1953 to 12-31-1953
Scale: 1:20,000
Overlap: 60%

Complete Metadata:
<http://www.library.ucsb.edu/mil/aerial-photography-tools>

- MIL owns frame
- MIL does not own frame

FLIGHT LOCATION



Index to Aerial Photography
Page 8 of 18

Scale of this index: 1:150,000



Copyright:© 2013 National Geographic Society, i-cubed

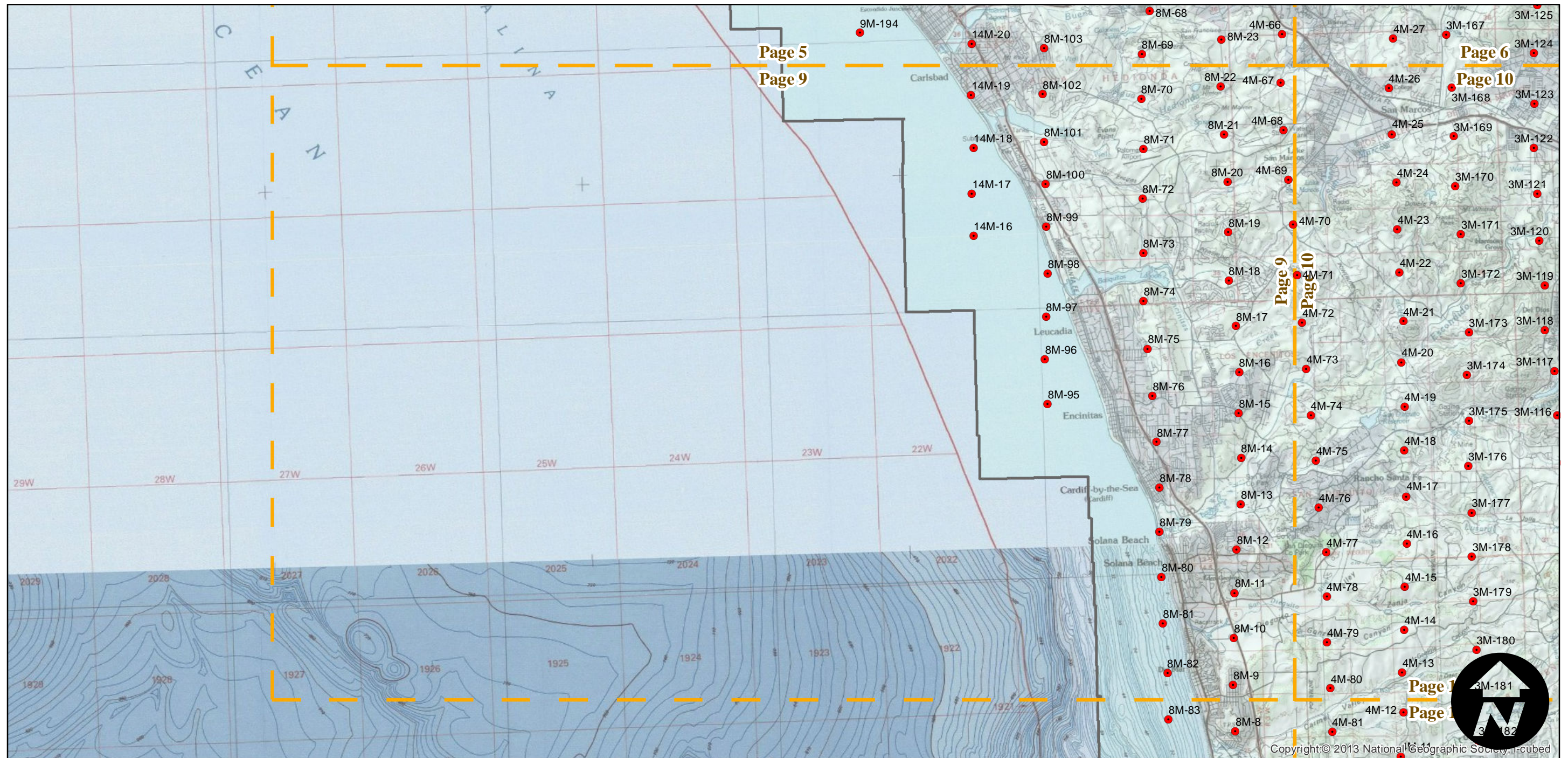
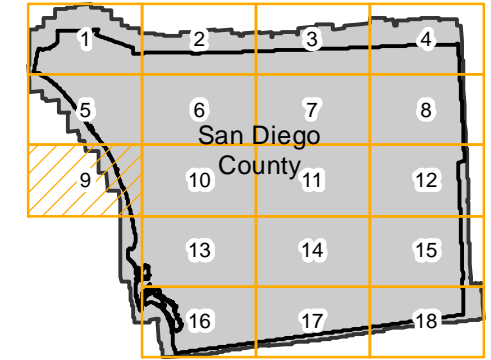
AXN-1953

Counties: San Diego
Flight date(s): 01-01-1953 to 12-31-1953
Scale: 1:20,000
Overlap: 60%

Complete Metadata:
<http://www.library.ucsb.edu/mil/aerial-photography-tools>

- MIL owns frame
- MIL does not own frame

FLIGHT LOCATION



0 2.5 5 10 Miles

Index to Aerial Photography
Page 9 of 18

Scale of this index: 1:150,000

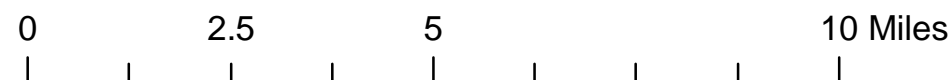
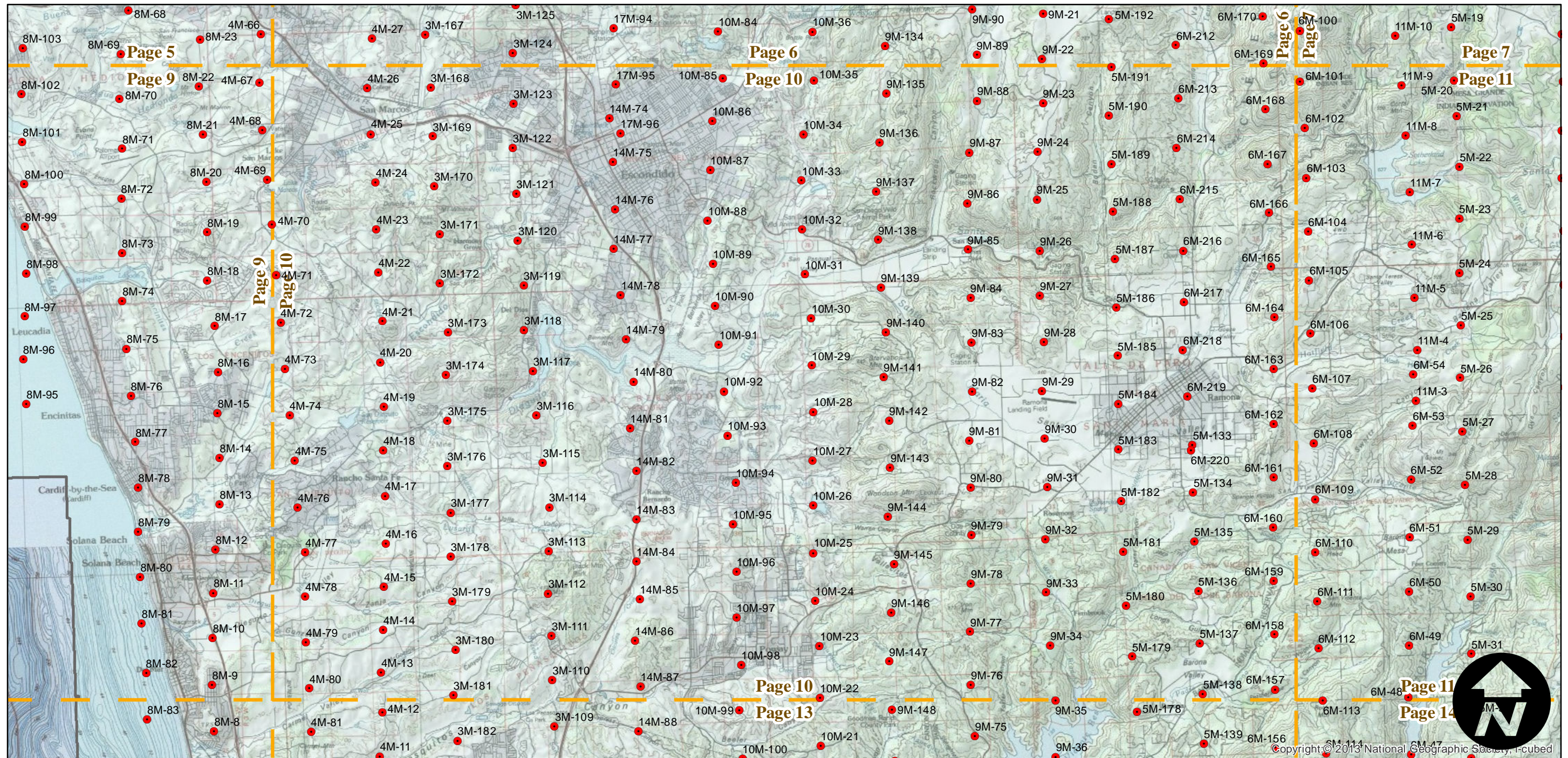
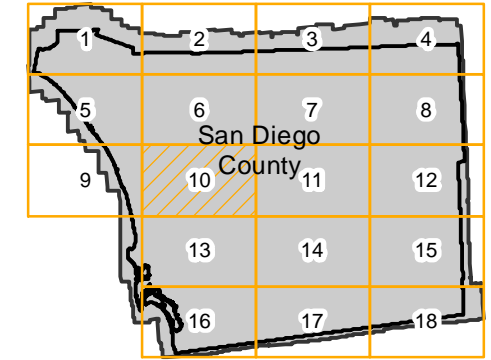
AXN-1953

Counties: San Diego
Flight date(s): 01-01-1953 to 12-31-1953
Scale: 1:20,000
Overlap: 60%

Complete Metadata:
<http://www.library.ucsb.edu/mil/aerial-photography-tools>

- MIL owns frame
- MIL does not own frame

FLIGHT LOCATION



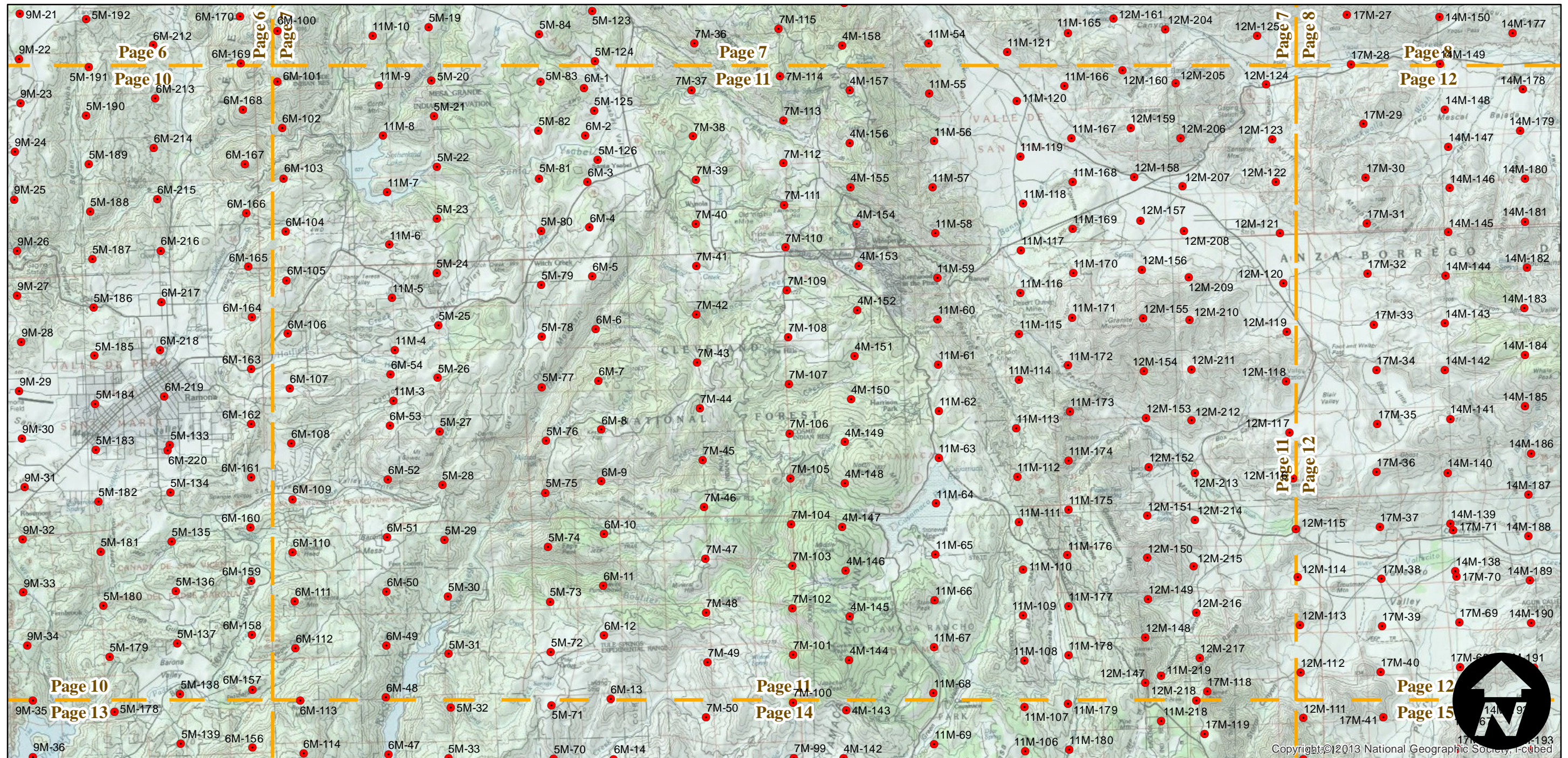
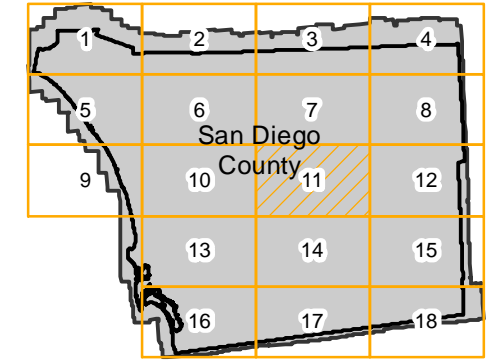
AXN-1953

Counties: San Diego
Flight date(s): 01-01-1953 to 12-31-1953
Scale: 1:20,000
Overlap: 60%

Complete Metadata:
<http://www.library.ucsb.edu/mil/aerial-photography-tools>

- MIL owns frame
- MIL does not own frame

FLIGHT LOCATION



0 2.5 5 10 Miles

Index to Aerial Photography
Page 11 of 18

Scale of this index: 1:150,000

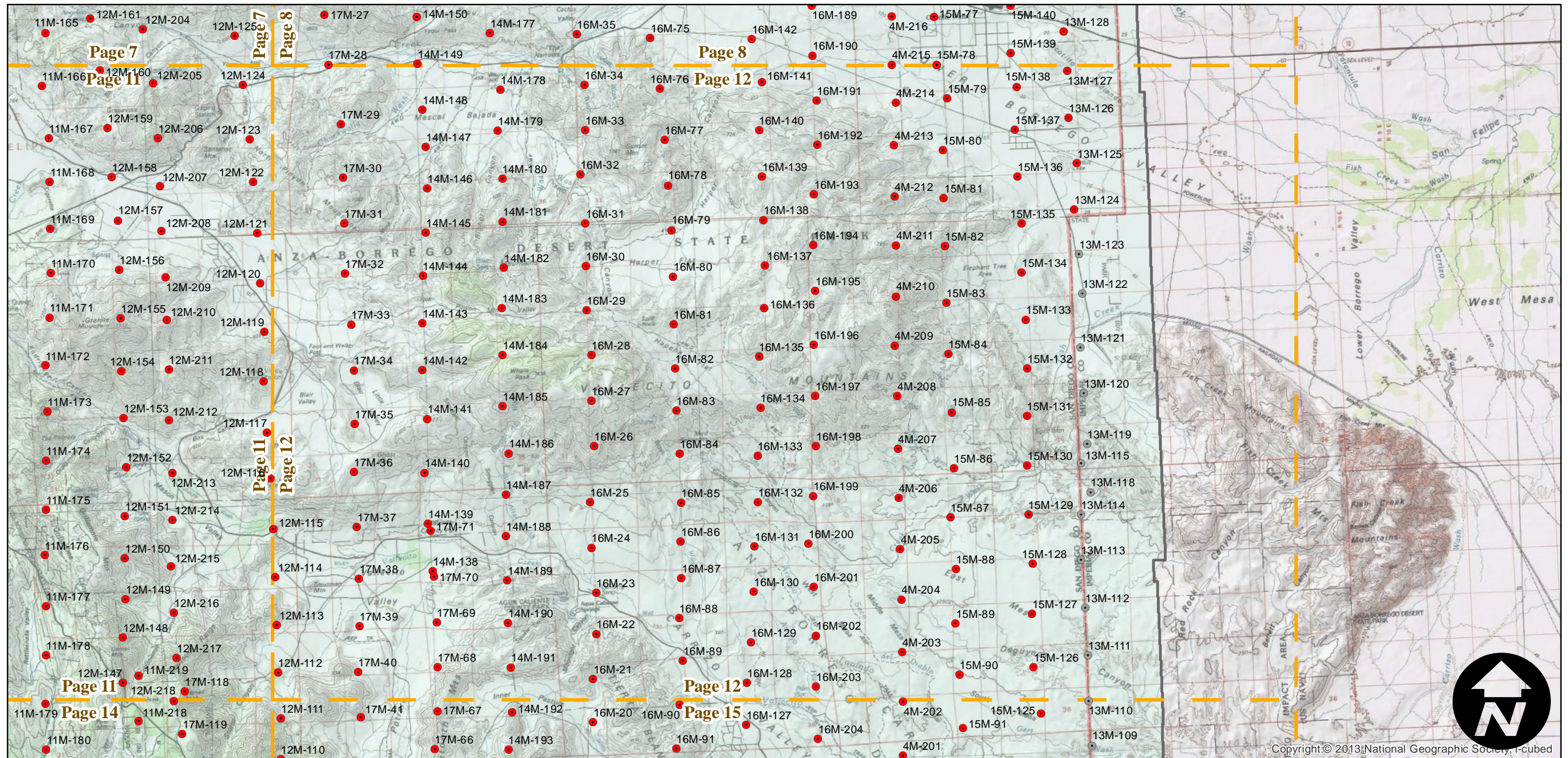
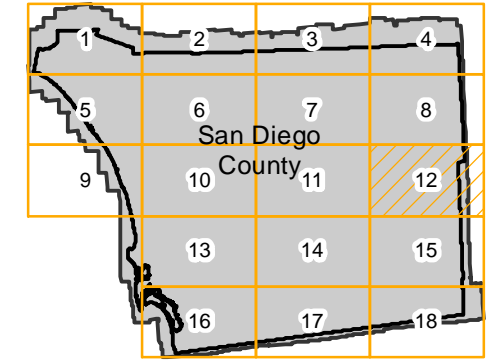
AXN-1953

Counties: San Diego
Flight date(s): 01-01-1953 to 12-31-1953
Scale: 1:20,000
Overlap: 60%

Complete Metadata:
<http://www.library.ucsb.edu/mil/aerial-photography-tools>

- MIL owns frame
- MIL does not own frame

FLIGHT LOCATION



Copyright © 2013 National Geographic Society, I-cubed

0 2.5 5 10 Miles

Index to Aerial Photography
Page 12 of 18

Scale of this index: 1:150,000

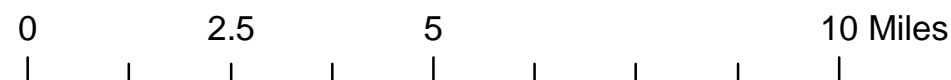
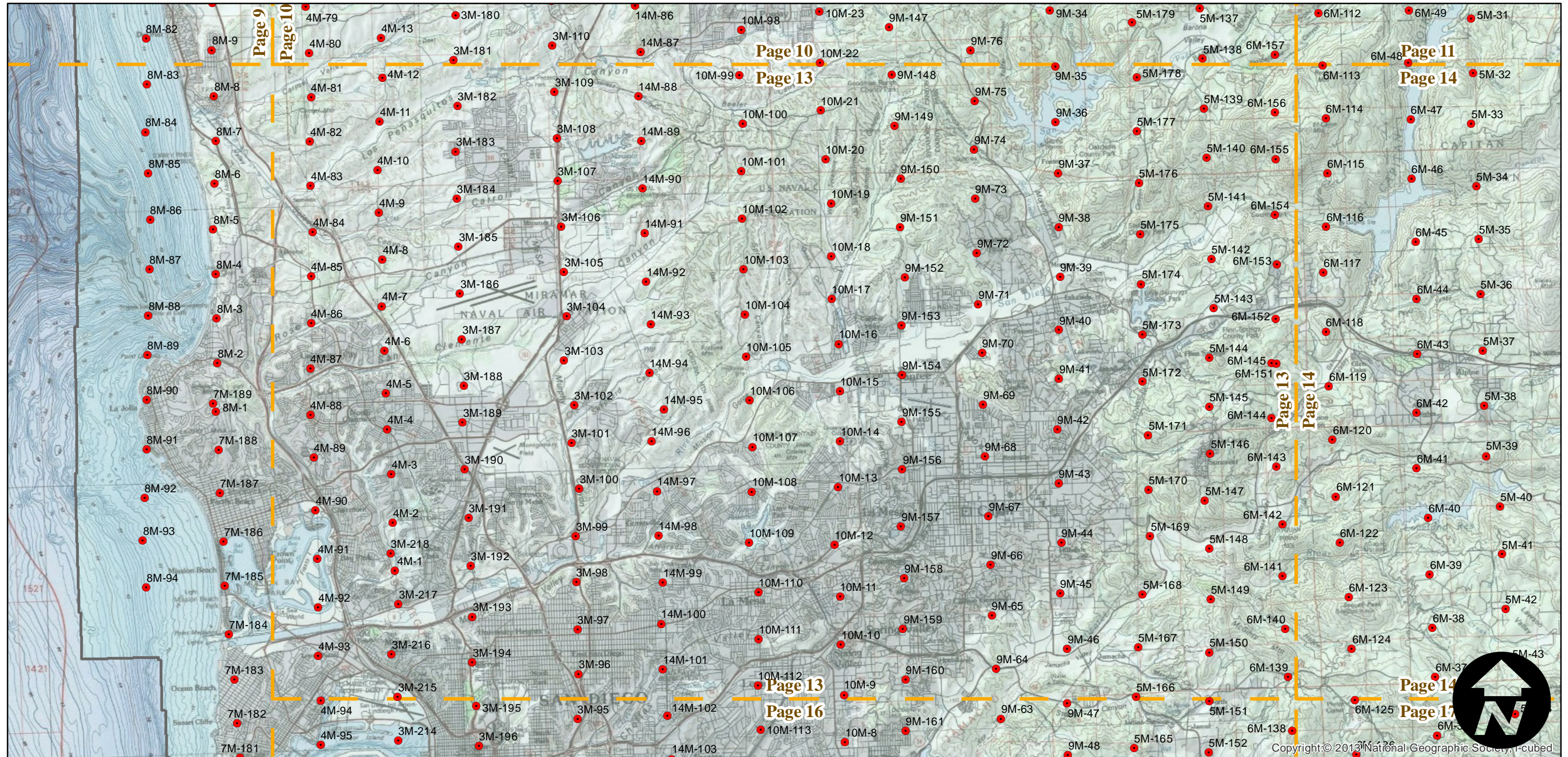
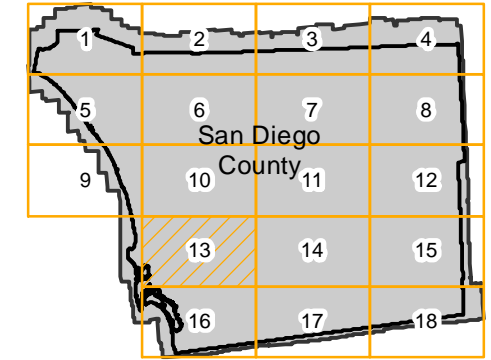
AXN-1953

Counties: San Diego
Flight date(s): 01-01-1953 to 12-31-1953
Scale: 1:20,000
Overlap: 60%

Complete Metadata:
<http://www.library.ucsb.edu/mil/aerial-photography-tools>

- MIL owns frame
- MIL does not own frame

FLIGHT LOCATION



Index to Aerial Photography
Page 13 of 18

Scale of this index: 1:150,000

Copyright © 2013 National Geographic Society, i-cubed

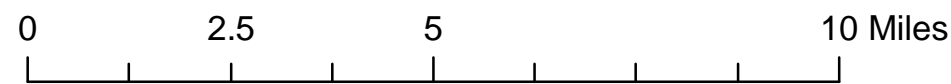
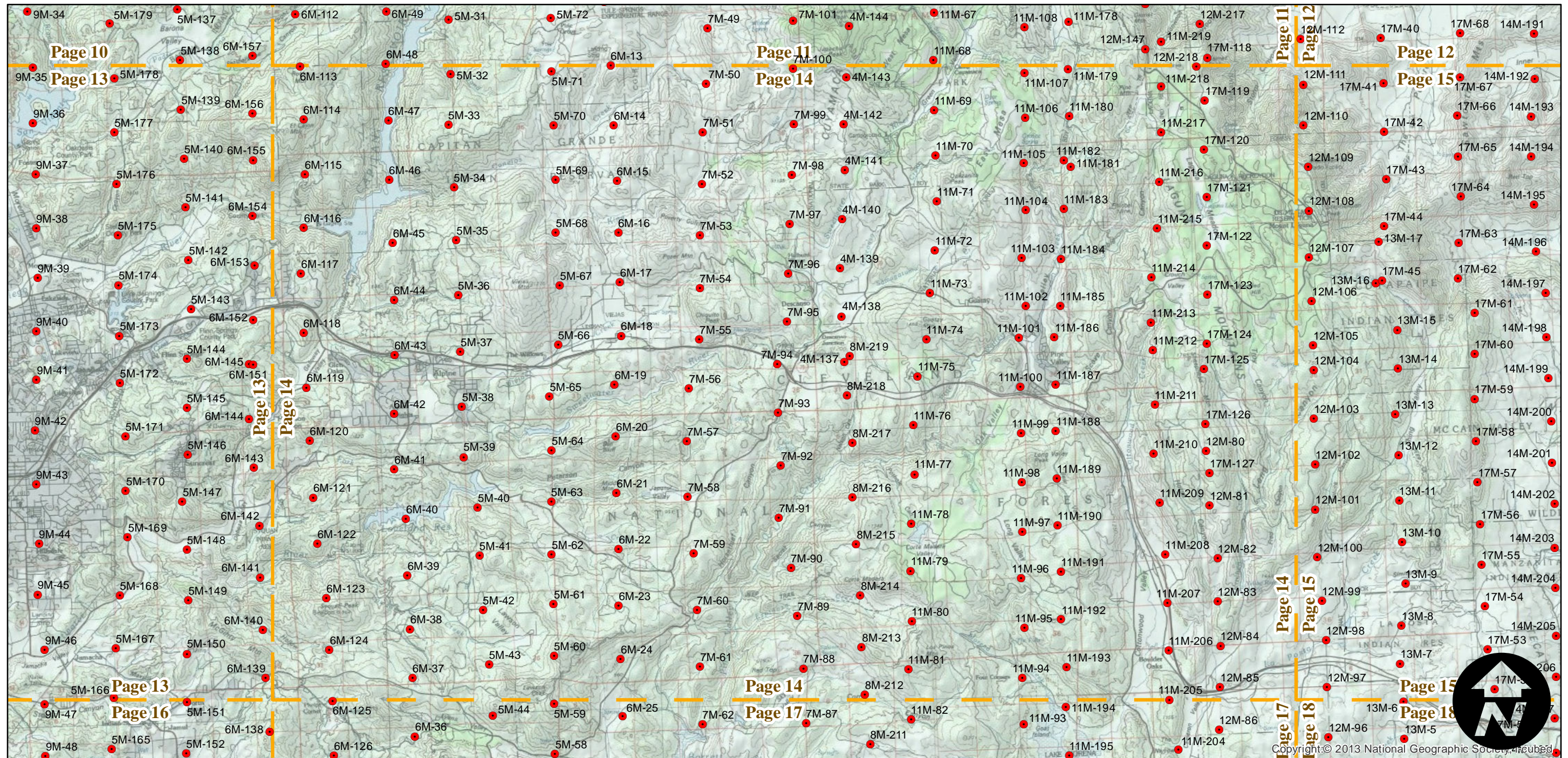
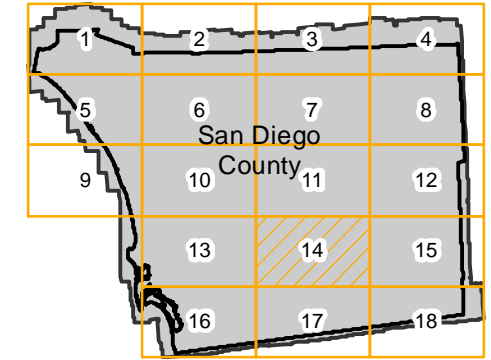
AXN-1953

Counties: San Diego
Flight date(s): 01-01-1953 to 12-31-1953
Scale: 1:20,000
Overlap: 60%

Complete Metadata:
<http://www.library.ucsb.edu/mil/aerial-photography-tools>

- MIL owns frame
- MIL does not own frame

FLIGHT LOCATION

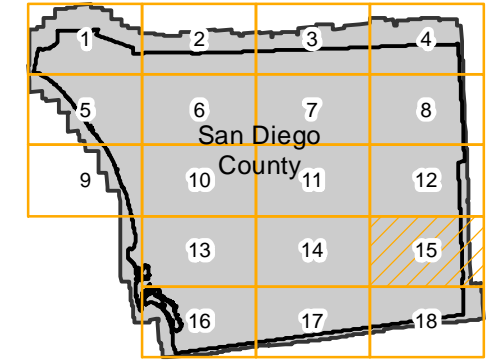


AXN-1953

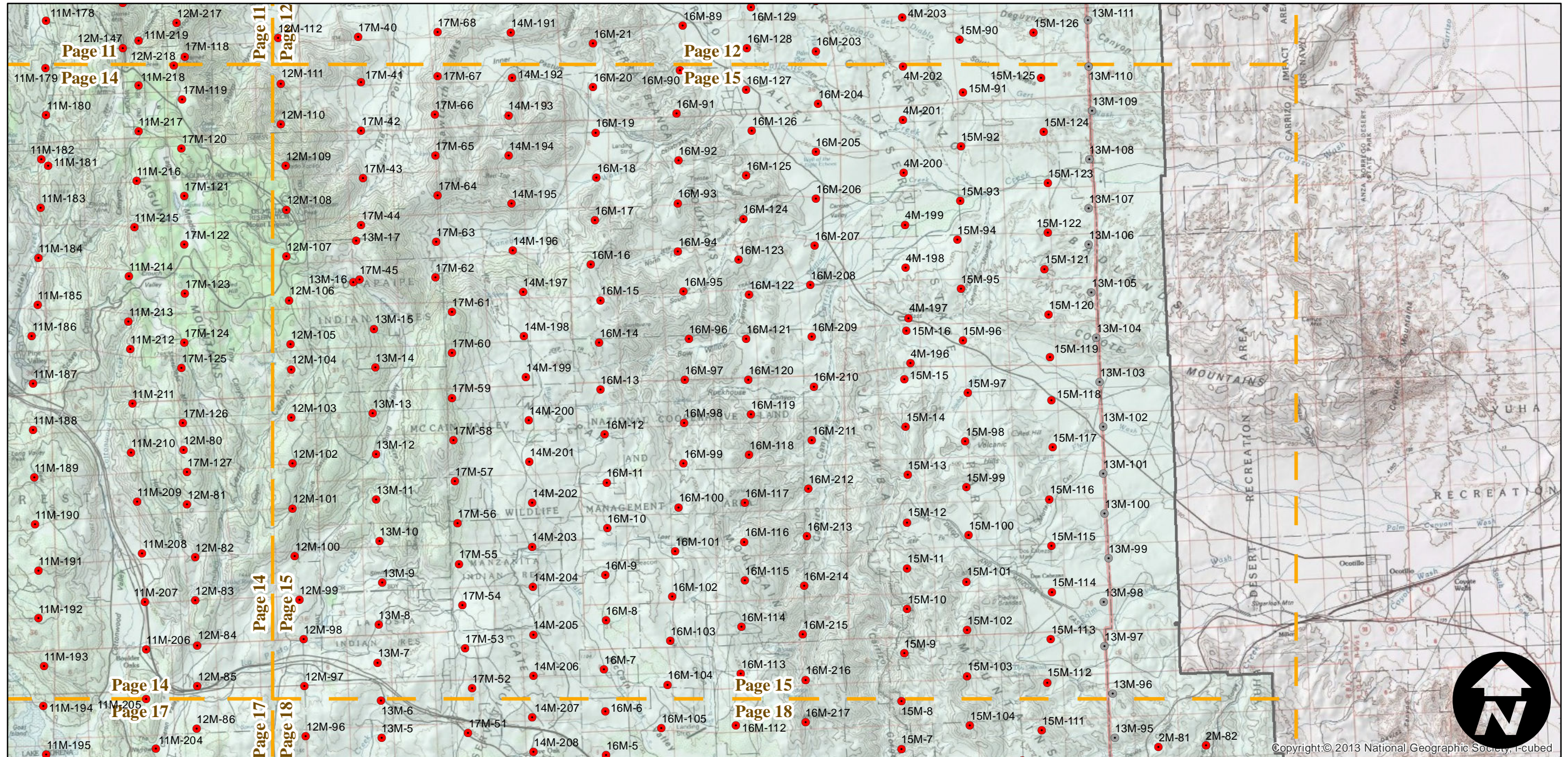
Counties: San Diego
Flight date(s): 01-01-1953 to 12-31-1953
Scale: 1:20,000
Overlap: 60%

Complete Metadata:
<http://www.library.ucsb.edu/mil/aerial-photography-tools>

FLIGHT LOCATION



- MIL owns frame
- MIL does not own frame



0 2.5 5 10 Miles

Index to Aerial Photography
Page 15 of 18

Scale of this index: 1:150,000

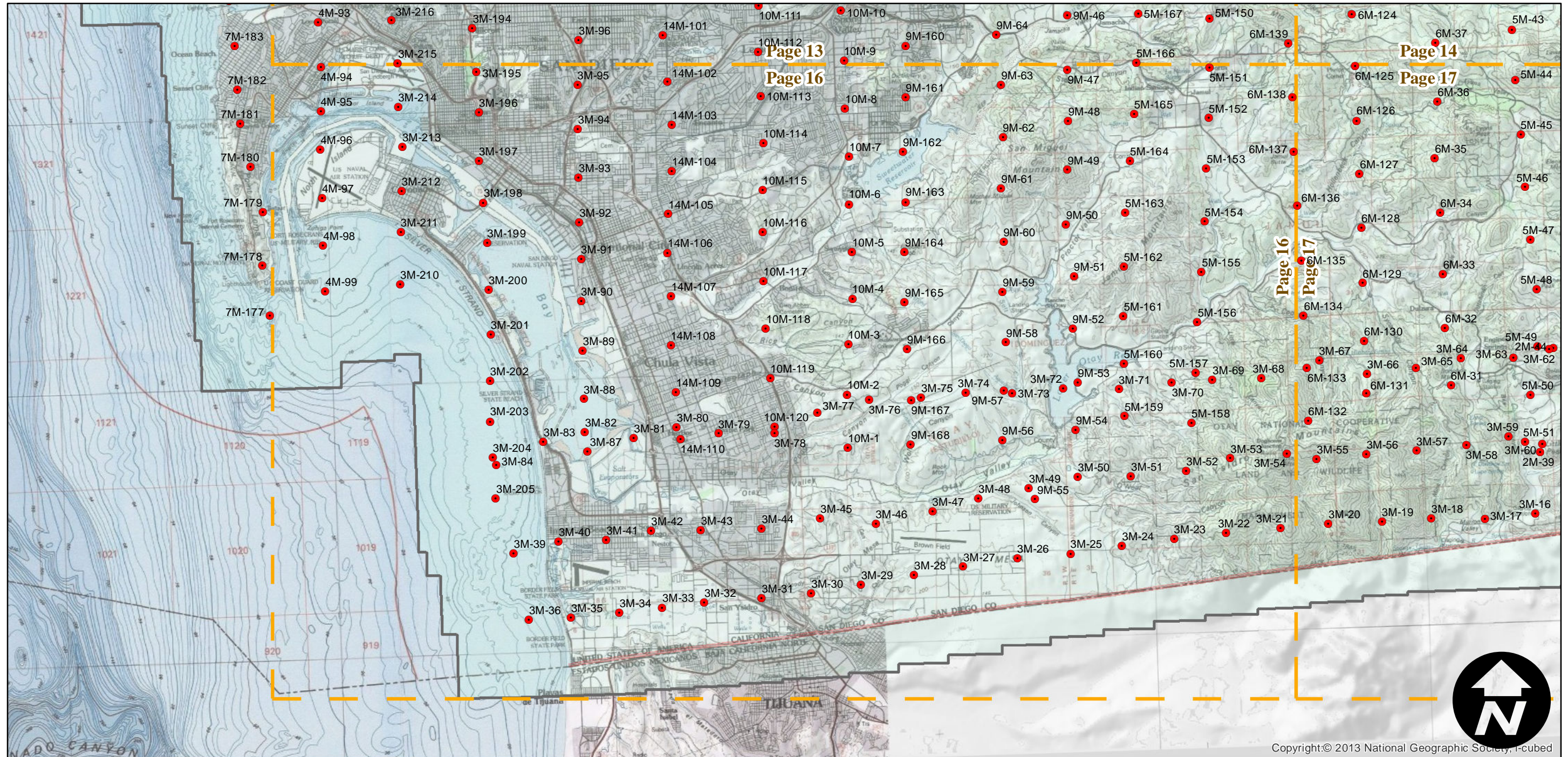
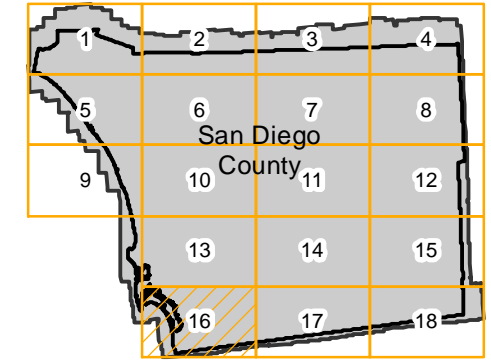
AXN-1953

Counties: San Diego
Flight date(s): 01-01-1953 to 12-31-1953
Scale: 1:20,000
Overlap: 60%

Complete Metadata:
<http://www.library.ucsb.edu/mil/aerial-photography-tools>

- MIL owns frame
- MIL does not own frame

FLIGHT LOCATION



0 2.5 5 10 Miles

Index to Aerial Photography
Page 16 of 18

Scale of this index: 1:150,000

Copyright:© 2013 National Geographic Society, I-cubed

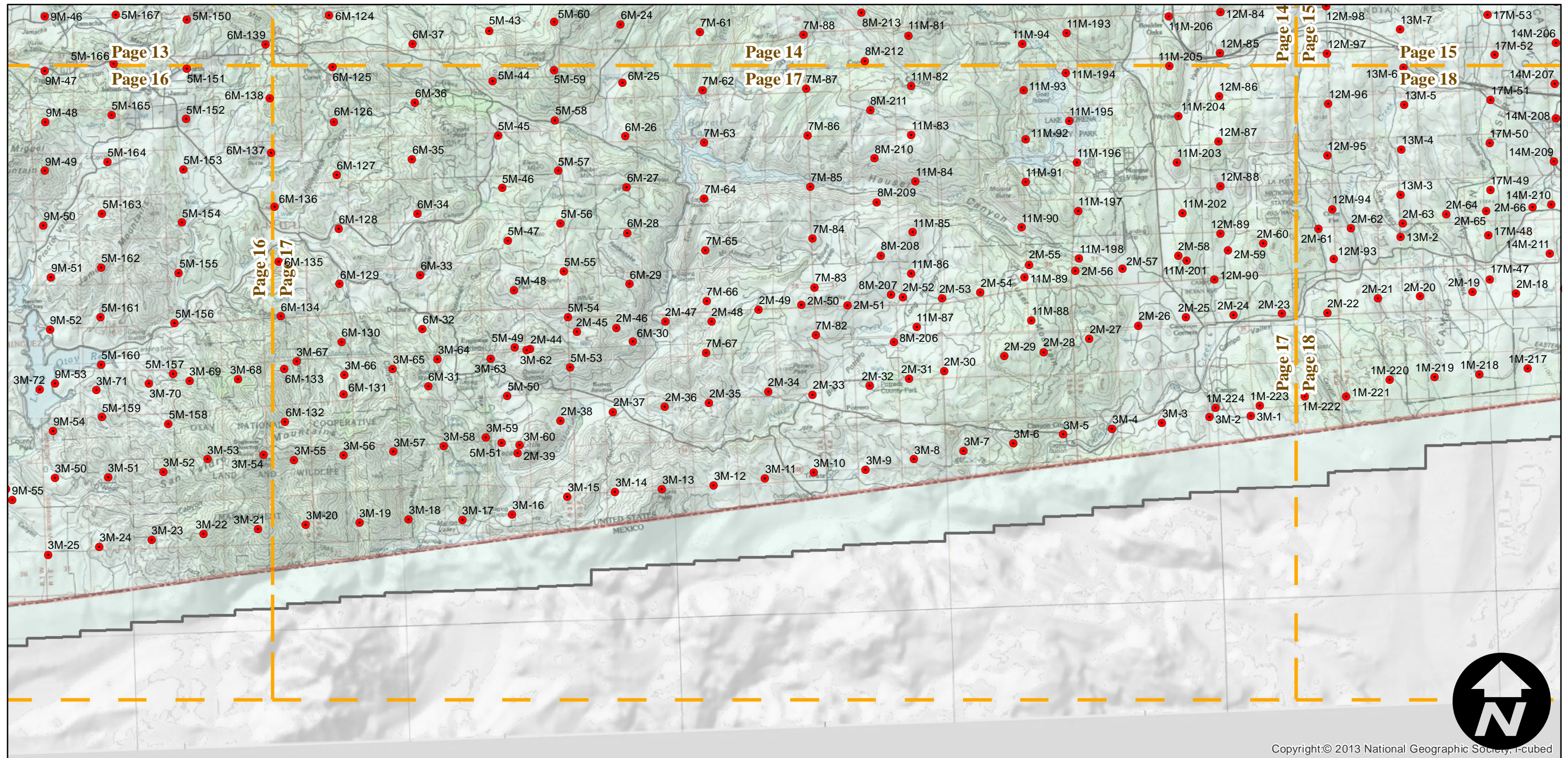
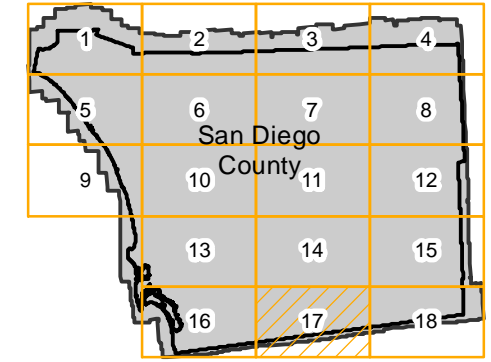
AXN-1953

Counties: San Diego
Flight date(s): 01-01-1953 to 12-31-1953
Scale: 1:20,000
Overlap: 60%

Complete Metadata:
<http://www.library.ucsb.edu/mil/aerial-photography-tools>

- MIL owns frame
- MIL does not own frame

FLIGHT LOCATION



Copyright:© 2013 National Geographic Society, I-cubed

0 2.5 5 10 Miles

Index to Aerial Photography
Page 17 of 18

Scale of this index: 1:150,000

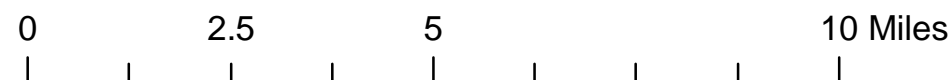
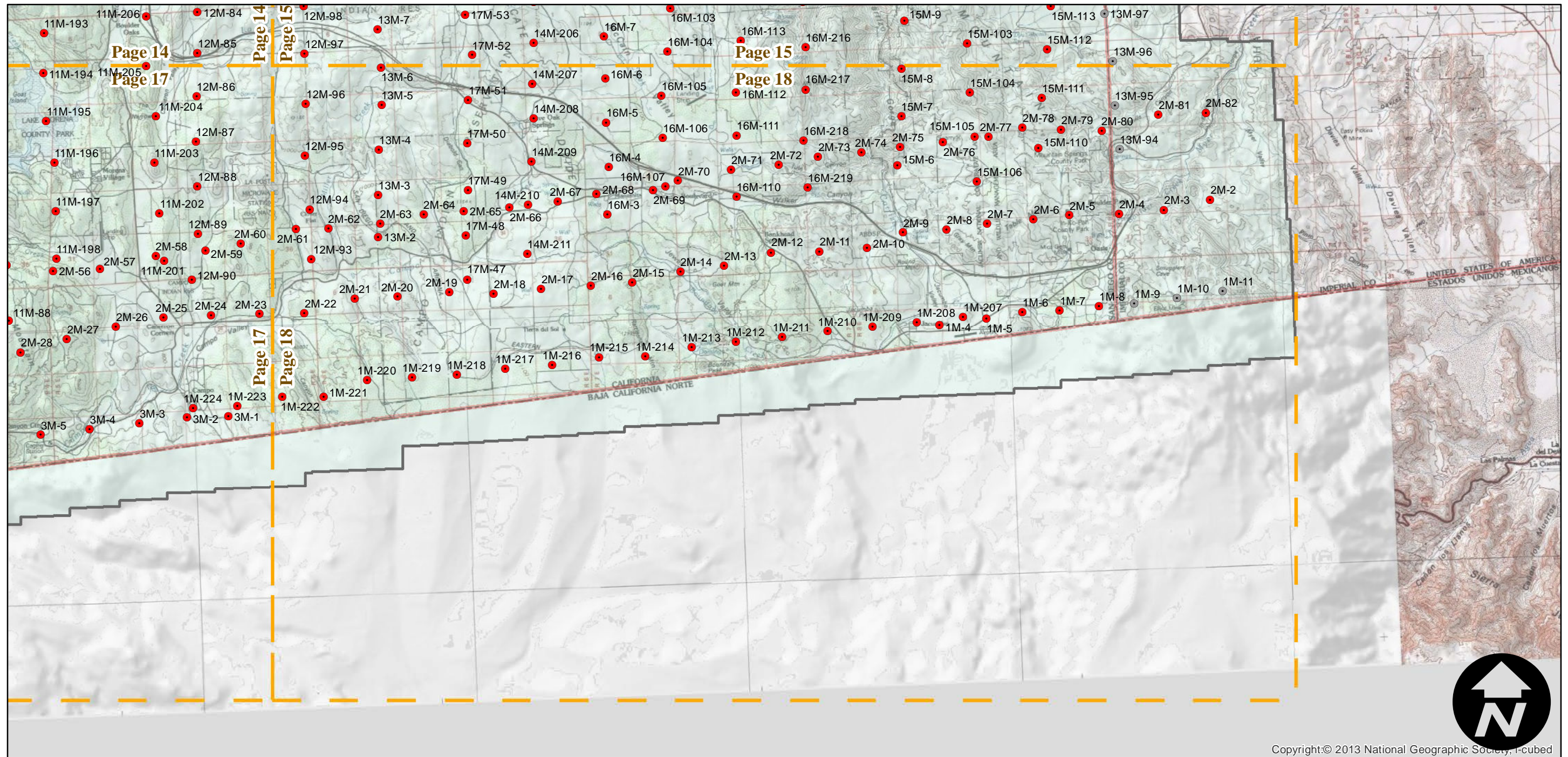
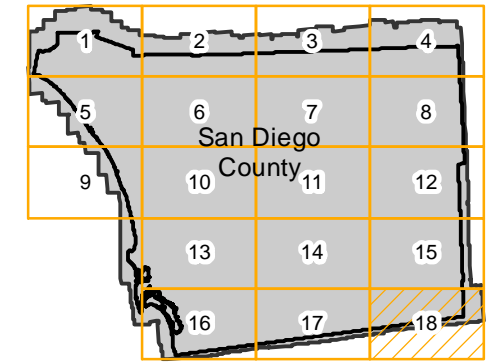
AXN-1953

Counties: San Diego
 Flight date(s): 01-01-1953 to 12-31-1953
 Scale: 1:20,000
 Overlap: 60%

Complete Metadata:
<http://www.library.ucsb.edu/mil/aerial-photography-tools>

- MIL owns frame
- MIL does not own frame

FLIGHT LOCATION



Index to Aerial Photography
 Page 18 of 18

Scale of this index: 1:150,000

Copyright:© 2013 National Geographic Society, I-cubed